

# ColorFlo® Liquid Color Card

SOLOMON COLORS



1% loading



413 Colony Red

2% loading



413 Clay

3% loading

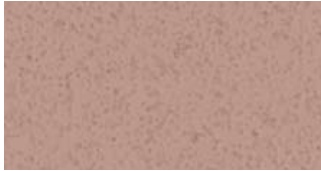


413 Fox Red

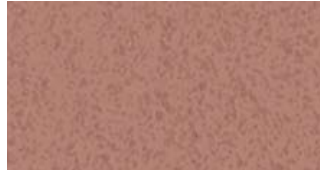
4% loading



413 Terra Cotta



417 Rose



417 Brick Red



417 Paver Red



417 Apple Red



489 Dusty Rose



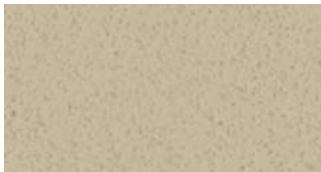
489 Light Plum



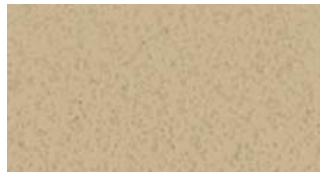
489 Redwood



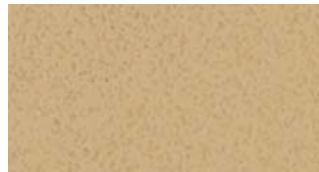
489 Dark Redwood



288 Rosemary



288 Ginger



288 Bamboo



288 Straw



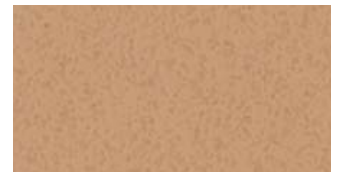
750 Desert Tan



750 Salmon



750 Prairie Tan



750 Peach



775 Sand



775 Cedar



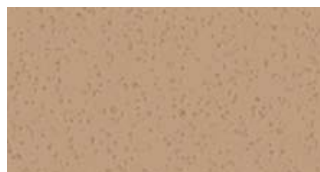
775 Camel



775 Sedona



757 Buckwheat



757 Pecan



757 Antique Gold



757 Old Gold



755 Trail Dust



755 Driftwood



755 Spice



755 Apricot

These color chips represent shades of Integral Colors based on 94 lbs. gray Type I-II Portland cement with 4" slump. Use this chart as a guideline only. The colors may not exactly represent the final color. Shade variations of cement and aggregate plus variations in the volume of water, the addition of admixtures and other additives may have an effect on the design mix and final color. We recommend that a test slab be poured and approved prior to the start of the job.



1% loading	2% loading	3% loading	4% loading
<b>306 Canvas</b>	<b>306 Toffee</b>	<b>306 Burlap</b>	<b>306 Cinnamon</b>
<b>238 Thyme</b>	<b>238 Doeskin</b>	<b>238 Buttercup</b>	<b>238 Marigold</b>
<b>338 Earthen</b>	<b>338 Rawhide</b>	<b>338 Buckskin</b>	<b>338 Leather</b>
<b>385 Taupe</b>	<b>385 Lava</b>	<b>385 Buffalo</b>	<b>385 Bark</b>
<b>242 Sandstone</b>	<b>242 Sahara</b>	<b>242 Sandalwood</b>	<b>242 Nutmeg</b>
<b>492 Mauve</b>	<b>492 Merlot</b>	<b>492 Lilac</b>	<b>492 Garnet</b>
<b>467 Ash</b>	<b>467 Oyster</b>	<b>467 Orchid</b>	<b>467 Rustique</b>
<b>920 Slate</b>	<b>920 Smoke</b>	<b>920 Charcoal</b>	<b>920 Onyx</b>

**ColorFlo**® Liquid Color Gard

Equipment	
Products	
Solution	