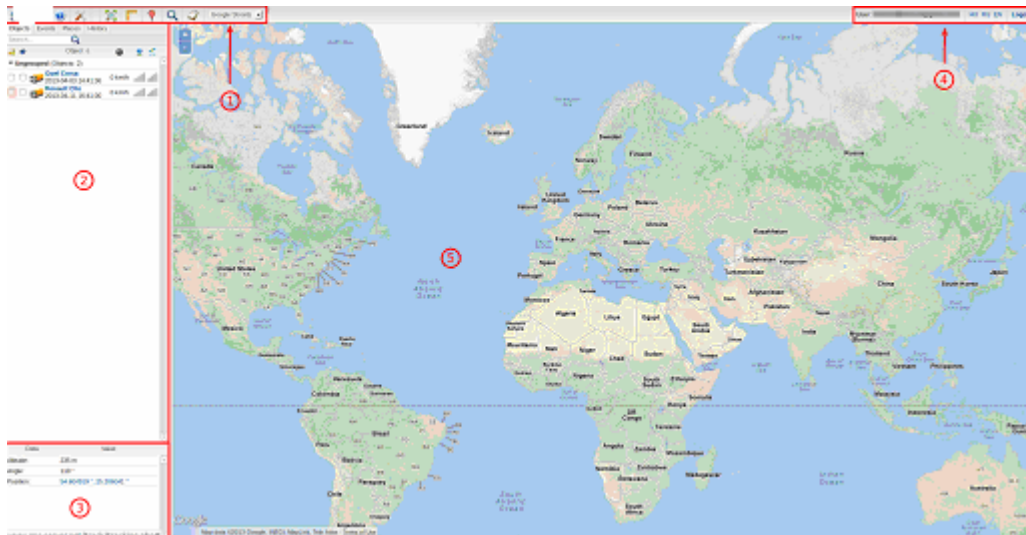


1 Overview of workspace

After login you will be redirected to the main page.

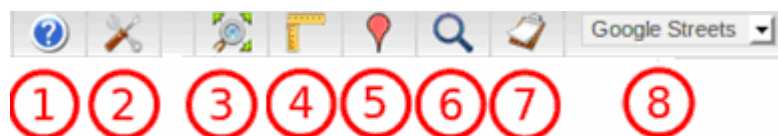


There are 5 components in the main page:

1. Top panel
2. Object list
3. Object details panel
4. Language panel
5. Map

1.2 Top panel

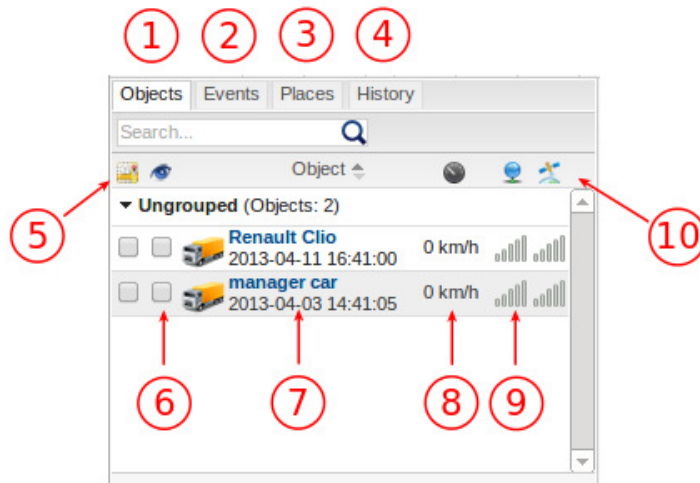
Top panel is used for fast access to various modules and places.



1. **Help button.** After pressing this button you will be redirected to this manual.
2. **Settings menu.** In settings menu you can add new objects, events and etc.(more details about setting menu in this section)
3. **Object fit on map function.** Zooms map the way that all objects from your list are visible on map.
4. **Ruler.** Simple tool for measuring distances on map.
5. **Show point.** This function sets map focus to place of entered coordinates.
6. **Search address.** Helpful and easy to use tool for searching address on map.
7. **Reports menu.** Function for creating various reports. (more details about reports menu in this section)
8. **Maps menu.** In this menu you can change currently used map: OSM map, GOOGLE maps or BING maps.

1.3 Objects list panel

In object list panel you can view objects, search them on map create events and zones.



1. **Objects tab.** In objects tab you can view current objects statistics.
2. **Events tab.** In events tab history of events can be viewed (overspending, entering or leaving Zones and etc)
3. **Places tab.** Places tab allows you to create, edit and delete zones and markers
4. **History tab.** In history tab you can view history, create reports, export them to various Formats.
5. **Visibility checkbox.** This checkbox turns on or off visibility objects on map.
6. **Follow checkbox.** This function centers selected object in the middle of the screen every time that GPS tracking device has refreshed his position, if multiple objects selected map zooms the way that all of them remain visible.
7. **Objects name.** Name of the object, date and time of last received coordinates.
8. **Speed indicator.** Shows current speed of the object.
9. **GPRS indicator.** Shows strength of GPRS signal.
10. **GPS signal.** Shows of GPS signal.

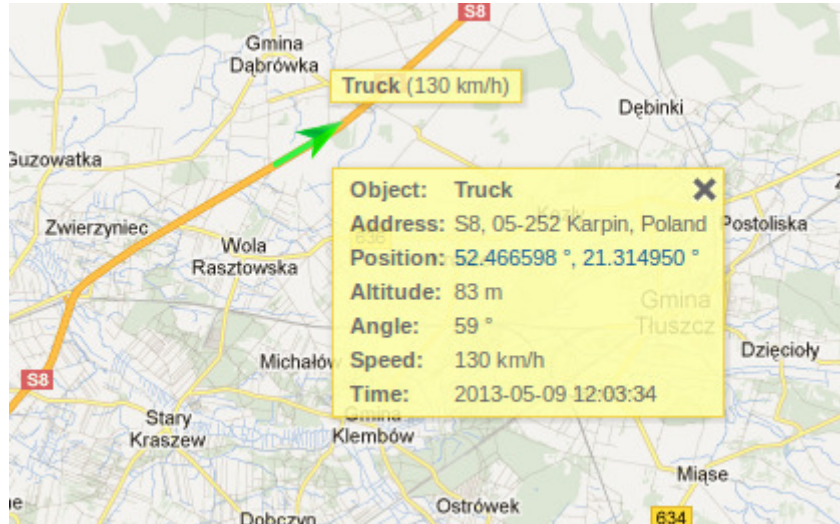
1.4 Object details panel

In this panel you can view more detailed information about selected object.

Data	Value
Altitude:	235 m
Angle:	119 °
door:	closed
Ignition:	Engine off
Model:	Opel Corsa
Plate:	abc123
Position:	54.604919 °, 25.386041 °

2 The Map

The map shows objects with trackers that are connected to the MadarTech server. For information about address, speed and altitude of the object click the left mouse button on icon (name) of the object.



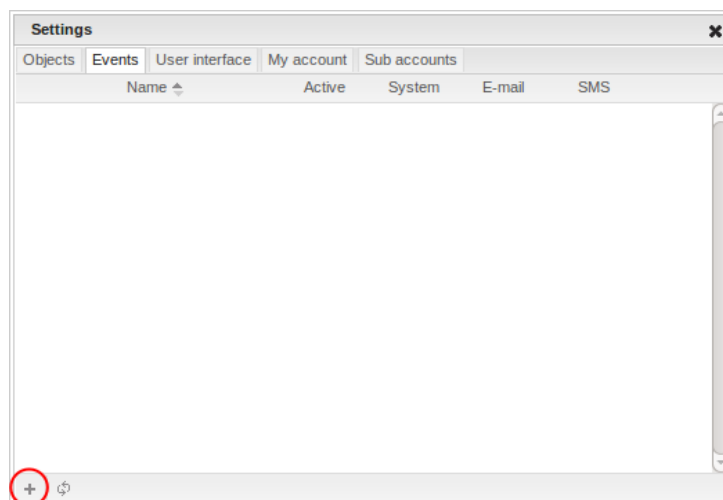
Track the movement of the object is drawn behind him in a zigzag pattern. The more frequently transmitted the point form the tracker, the smoother the line track.

3 Events

Events are used to simplify monitoring on objects. They inform you about breaking set rules like overspending and when object leaves or enters selected zone. This is very useful tool for work with objects.

3.1 Creating an Event

To create a notification about the event open Settings window from Top panel and click on Events tab. Press + button.



Event properties window will appear

- **Event active.** Turns on and off event. Very useful if you don't need to receive event messages but want keep the event for further usage.
- **Event type.** In current version of MadarTech current events are supported:
- **SOS.** Notification of SOS alarm button is pressed on the object.
- **Over speed.** Object exceeded the prescribed speed.
- **Under speed.** Object has slowed down below the specified speed.
- **Sensor.** Event is triggered by sensor, opened door, started engine etc.
- **Zone in.** Object entered the zone.
- **Zone out.** Object left the zone.
- **Event name.** Name of the Event that will be displayed in the events list and under which messages will be received.

Objects

Selected objects. Select object for which event is created. For selecting multiple objects keep "Ctrl" button pressed.

Notification about event

System message. Turns on and off system message. Note: that system message will be seen only in used browser window.

Message to E-mail box. Turns on and off message to e-mail which is triggered by selected event. Note: that only one e-mail address can be used.

SMS to mobile phone. Sends Event message via SMS. Note: this option will come in the future.

Event conditions

No connection period (min).

Speed limit. Sets speed limit, works with over speed and under speed events.

Sensor conditions. Select sensor and describe conditions of generating report.

Selected zones. Select zone from list - for selecting multiple zones keep "Ctrl" button pressed.

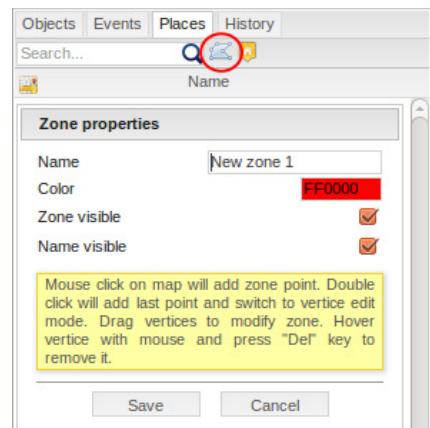
After setting all parameters press save button.

4 Working with Zones

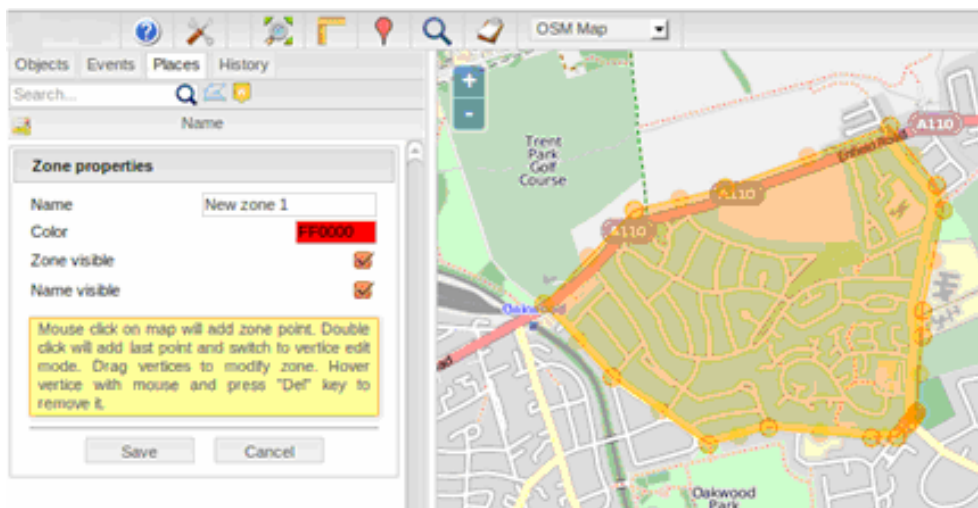
Zone - is set by you on the area map, its purpose is to notify you when object enters or leaves the zone. For example, when a car arrives to the desired point.

4.1 Creating a Zone

In order to create Zone please open Places tab in Object list.



Press draw zone button. Choose name for the zone color in which it will be shown on the map. Mouse click on map will add zone point. Double click will add last point and switch to vertical edit mode. Drag vertices to modify zone. Hover vertical with mouse and press "Del" key to remove it.



After creating Zone press save button.

5 Report generation

Please follow these steps to create reports for any vehicle of your fleet, you can also schedule reports to be generated and send for your email for any given period of time.

The screenshot shows the 'Reports' section of the MadarTech software. It features a sidebar with a list of vehicles, a main form for creating reports, and a data table at the bottom left. Six callout boxes provide instructions:

1. Click this icon for
2. Chose type of desired report
3. Select vehicle
4. Select period of report
5. Select format
6. Create/Generate report

Date	Value
Altitude:	150 m
Angle:	199 °
Odometer:	5775 km
Plate:	7256 HM
Position:	21 48954 °, 57 286182 °
SIM card number:	96107432

6 Technical support

We do our best at MadarTech that the service is comfortable and easy to use. But if you have not found answers to your questions in this tutorial, please contact us by phone on our helpline: +968 91155315 or by e-mail: info@madargps.com.