

## Fargo-Moorhead, ND Chapter #246

# The Prairie Rose



*As material for the  
construction of our  
building, I pledge  
the agility of  
my hands, the  
ability of my mind,  
and the integrity  
of my heart.*

November 2017

## Message From FM #246

### Winter is here - Stay Safe!!

It is November 1st and winter has begun even though there is still more construction work to be done. Many streets are still under construction so remember to use caution when driving and there are still projects to be done before the actual winter shut down. Remember safety first if you are working outside in the cold and wet.



### Fall Conference:

On October 20th & 21st I attended the Midwest Region Fall Conference in Cedar Rapids, Iowa with other members of the region. This is one of two meetings held each year where regional business is conducted. The theme was "Shark Tank: Make an Investment in NAWIC". Attendees heard from several speakers about "Closing the Deal", "Present to Persuade & With Impact", "Effective Communication-Beyond Words", "Leadership, Goal Setting & Planning", "Volunteer Leadership" and also heard from the regional leadership team about the goals of each committee to achieve National President Schoenenberger's theme of "Making a Measurable Difference". Between the speakers and networking Director Nickel and the Cedar Rapids-Iowa City Chapter #160 hosted an educational event to help attendees grow professionally and personally.

➤ **Mark your calendar** to attend the next regional meeting, Annual Forum, May 17-19th, 2018 in Rapid City, SD and hear from Holly Hoffman, from season 21 "Survivor Nicaragua" who will be the keynote speaker and workshop presenter. A tour to Mount Rushmore and Crazy Horse are also being planned for the Thursday prior to the meeting.



**November 16th:**  
39th Annual Auction Fundraiser  
Holiday Inn, Fargo, ND

*Amy Berg*

**Fargo-Moorhead, ND  
Chapter #246**

657-2nd Ave N Unit 763

Fargo, ND 58107

[nawicfm246@gmail.com](mailto:nawicfm246@gmail.com)

Website

[www.nawicfm246.org](http://www.nawicfm246.org)

Chartered - June 3, 1978

Find us on  
**facebook**

## In This Issue

Message From FM246 .....	1
Calendar/Upcoming Events .....	2-3
Chapter Member Info .....	4
Regional & National Info.....	5
Committees / Calendar.....	6-8
NEF Information.....	9
Misc Info .....	10
Ads / Sponsorships .....	11
246 in Pics .....	12

**NAWIC Needs You**

&

**You Need NAWIC !!**



2017

Sun	Mon	Tue	Wed	Thu	Fri	Sat
~ <b>November 1</b> - IRS compliance form due ~ <b>February 15</b> IRS 990, 990EZ, 990N (e-postcard) must be done by ~ copy to NAWIC Office & Director			1 IRS Compliance Form Due	2	3	4
					North Central - Fall Conference	
5 Daylight Savings Ends	6	7	8 MEMBERSHIP PR & M CONF CALL	9	10	11 
					Northeast - Fall Conference	
12	13	14	15	16 FM 246 39th Annual AUCTION	17	18
					South Atlantic - Fall Conference	
19	20 Monthly reports due to Director	21	22	23 	24	25
26	27	28 	29	30 Health, Tech & Trades Career Expo		

## Upcoming Regional/National Events

MIDWEST REGION	ANNUAL MEETING & EDUCATION CONFERENCE (AMEC)	MIDWEST REGION 2017 FALL CONFERENCE
	<p><b>SAVE THE DATE</b></p> <p><b>63rd Annual Meeting</b></p> <p>Watch for information about all the things to do &amp; see in Orlando when you aren't attending the many seminars &amp; workshops that will be available to enhance your career in the construction industry!!</p> <p><b>Hilton Orlando Lake Buena Vista</b></p>	<p>General Registration - \$145 (after 10/1)</p> <p><b>DoubleTree by Hilton</b></p> <p>Deluxe King/Deluxe Queen dbl) - \$124</p> <p>350 First Ave NE Cedar Rapids, IA 52401</p> <p><b>Shark Tank:</b> <b>Make An Investment In NAWIC.</b></p> <p>Co-hosted by: Quad Cities/Moline #50</p>
May 17-19, 2018 Rapid City, SD	August 15-18, 2018 Orlando, FL	October 20-21, 2017 Cedar Rapids, IA





2017

Sun	Mon	Tue	Wed	Thu	Fri	Sat
<div> <b>SEASONS GREETINGS</b></div>					1	2
3	4	5	6	7 <i>Business After Hours</i>	8	9
10	11	12	13	14	15	16
17	18	19 <b>FM 246 Mtg</b> 	20	21	22	23
24 	25 	26	27	28	29	30
31						
NAWIC Offices Closed						

## Chamber Networking Events

- **BUSINESS AFTER HOURS** - Held on Thursday night (bi-monthly) - Location as noted

**4:30 - 7:00 PM**

December 7	- Delta by Marriot	Fargo
February 8	- Hilton Garden Inn	Fargo
April 19	- Delta by Marriot	Fargo
June 21	- Courtyard by Marriot	Moorhead
August 16	- Hilton Garden Inn	Fargo



- **WOMEN CONNECT** - Locations vary - **3:30 - 5:00 pm** (Social hour 5:00 - 6:00 pm)

**November 28** "Persona: The Role of Our Social Mask" Presented by Jennifer M. N. Schillinger

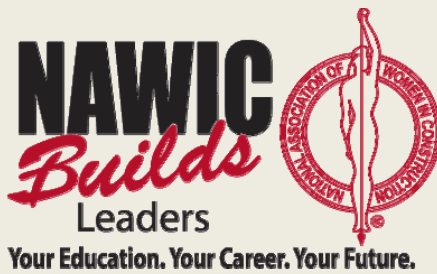
**December 19** "Shoes of Life"; Presented by Heather Ostrowski

**January 23, 2018** "Why Winners Win"; Presented by Robyn Benincasa (check website for location, time & fee)

For more information (location & cost) or to register for these events go to [www.fmchamber.com](http://www.fmchamber.com)

## 2017 / 2018 Officers

NATIONAL		LOCAL	
<b>President</b>	- Catherine Shoenenberger	<b>President</b>	- Amy Berg, CBT, CIT
<b>President Elect</b>	- Dove Sifers-Putman, CBT	<b>Vice President</b>	- Melanie Nordhogen
<b>Vice President</b>	- Diane Mike, CBT	<b>Secretary</b>	- Amy Berg, CBT, CIT
<b>Secretary</b>	- Jill Hanson, CIT	<b>Treasurer</b>	- Suzi Retzlaff
<b>Treasurer</b>	- Anne Pflieger, CIT	<b>Directors</b>	- Emily Herbranson
<b>IPP</b>	- Connie Leopard, CIT	<b>IPP</b>	



**If you have anything you would like added to the Newsletter:**

Please contact: Amy Berg:

Phone: 218-234-6633  
(leave message)

Email: [aberg.nawic@yahoo.com](mailto:aberg.nawic@yahoo.com)

### Midwest Region Information

#### Director

**Vicki Nickel, CIT**  
Cornerstone Companies  
4400 College Blvd.; Suite 350  
Overland Park, KS 66211  
Direct# 913-754-0191  
Fax #: 913-378-0399  
Email: [vnickel@ckcins.com](mailto:vnickel@ckcins.com)

#### WEBSITE

Visit the regional website at

**MIDWEST REGION** -  
[www.nawicmidwestregion.org](http://www.nawicmidwestregion.org)

#### FACEBOOK

Connect with us on Facebook at  
[facebook.com/groups/nawicmidwest](https://facebook.com/groups/nawicmidwest)

#### NAWIC Office Contact Info

NAWIC  
327 S. Adams St.  
Fort Worth, Texas 76104  
Phone - 800-552-3506  
Fax - 817-877-0324

#### WEBSITE

Visit our national website at  
[www.nawic.org](http://www.nawic.org)

#### FACEBOOK

Connect with us on Facebook at  
[facebook.com/nawicnational](https://facebook.com/nawicnational)



## Chapter Member Information

### Amy Berg, CBT, CIT

Joined - March 28, 1989

Innovative Window & Door Service, LLC  
31576 SW Pickerel Lake Rd  
Detroit Lakes, MN 56501  
218-234-6633  
aberg.nawic@yahoo.com

### Emily Herbranson

Joined - July 1, 2017

**Fabricators Unlimited**  
828 NP Ave  
Fargo, ND 58102  
701-235-1185  
emilyh@fabricatorsunlimited.com

### Emily Kautzman

Joined - August 1, 2017

**(NDSU Student)** / MEI Technologies  
1951 Dakota Dr. N  
Fargo, ND 58102  
701-214-3516  
emilykautzman@gmail.com

### Melanie Nordhougen, LEED AP

Joined - October 1, 2009

Mortenson Construction  
3009 37-1/2 Ave S  
Fargo, ND 58104  
701-799-5105  
melanie.nordhougen@mortenson.com

### Suzi Retzlaff

Joined - October 1, 2006

Empire Engineering  
1553 1st St  
West Fargo, ND 58078  
701-212-8484  
retzlaff@hotmail.com

### Kara Skarphol

Joined - July 1, 2017

Casselton Lumber  
5878 Autumn Dr.  
Fargo, ND 58104  
701-793-3287  
kara@casseltonlumber.com

### Lisa Thoreson

Joined - July 1, 2017

Moorhead Electric Inc. (MEI)  
3451 University Dr. S  
Fargo, ND 58104  
701-212-9540  
lthoreson@moorheadelectric.com

*Making a Measurable Difference*



**Give  
Thanks**



Carved by SE MN member:  
Julie Herrera-Lemler

**All Aboard!**  
**For Your NAWIC Journey**

- ◆ **SUPPORT**
- ◆ **ENCOURAGE**
- ◆ **GROW**



**#TakeAim4NAWIC**

**NAWIC** Needs You

You Need **NAWIC**

## Committee Reports

### MEMBERSHIP

*Do you know anyone who is employed in one of the many facets of the construction industry from entry level to CEO's of the companies? Invite them to join us for our next Membership Meeting/Program to learn more about NAWIC and the opportunities that are available to help them learn about themselves and the construction industry. **17-18 National Goals - 80% retention with 20% growth per chapter.***



**Do any of these describe your job? Then NAWIC is for you!!!**

- Accounting / Contract Administrator
- Engineers / Architects
- Project Managers
- Tradeswomen
- Business Owners
- Office Manager
- Operations Managers
- College Student In Construction Fields



**RENEWALS due!!** - *It's never too late to renew (\$25.00 Late Fee).*

**RETENTION** - National goal - 85% - we are at 77.8% retention.

We are currently at 7 members!! We need 1 more renewal to achieve the national retention goal and 9 new members to break the 15 member minimum.

Thank you to Hannah Reisdorf, Kim Hochhalter and Allison Carlson for attending the Fall Mixer held on October 18th.



### PR & MARKETING (COMMUNICATIONS / PUBLICITY)



Press Releases continue to be sent out for the monthly membership meetings and we continue to receive requests for information from prospective members through our website.

Press Releases were sent out for the Auction, Block Kids Winner, 17-18 Leadership Team and Onie Loeks Memorial Scholarship Recipients.

Information about the auction has been added to the FMWF Chamber, Prairie Public, KFGO & Froggy online calendars. Watch the Forum this Saturday for press releases.

### \$CHOLAR\$HIP - DUE TO NFSF BY FEBRUARY 28TH!!!

**NFSF:** *Scholarship applications for the Onie Loeks Memorial Scholarship are due to NFSF by February 28th, each year. Information for the scholarship is available online at: <http://www.nawic.org/nawic/NFSFScholarships.asp>*

➤ Congratulations to the winners of the 2017-2018 "Onie Loeks Memorial Scholarship's":

\$ 500 - Kalley Bardson MSUM - Construction Management  
\$1000 - Amanda Mears NDSU - Electrical Engineering

We look forward to meeting and recognizing them at our Auction in November!!



### BYLAWS / STANDING RULES - NATIONAL CHAIR: *ROBIN FULTON MEYER*

Each member needs to go to the NAWIC website and download the most current copies of the NAWIC operational manual which contains the current NAWIC bylaws.

➤ **Due to changes at the National level The Chapter Standing Rules have been reviewed by Chapter board and sent to the National Chair for approval. (Approved)**

**DUTIES:** Responsible for preparation and presentation of all Bylaw and Chapter Standing Rule amendments.

## Committee Reports

### WAYS & MEANS (FUNDRAISING)

#### Sponsorship Opportunities

Information packet is available on the chapter website: [www.nawicfm246.org](http://www.nawicfm246.org)

**Auction - November 16, 2017** Invites and donation requests have been sent out and are coming in!! See you at the Auction!!

**DUTIES:** Responsible for all Chapter fundraising activities. Subcommittees will oversee annual activities such as the Annual Auction, Golf Tournament and/or other activities.

**IMPORTANT** - do you have any ideas for Chapter Fundraisers?

### FINANCE - AUDIT / BUDGET

**AUDIT:** The 16-17 audit is in process

**BUDGET:** The 17-18 budget has been adopted.



### PARILIAMENTARIAN

**DUTIES:** Will help the President keep the meeting running smoothly using Roberts Rules Newly Revised guidelines.

### NAWIC EDUCATION FOUNDATION (NEF) - SEE PAGE 10 FOR MORE DETAILS

**DUTIES:** Will promote the NAWIC Education Foundation (NEF) programs within the Chapter and Community and also gain financial support for these programs which include Block Kids, Design/Drafting contests for students and the adult educational programs (see info on page 10)

### WIC WEEK - MARCH 4 - 10, 2018



#### Women In Construction (WIC) Week

**Dates to Remember:**

Commitment Form Due	1 / 5 / 2018
Poster / Pin Orders Due **	2 / 1 / 2018
Recap Form Due	4 / 2 / 2018

**2017-18 AWARDS:**

1. Chapter with the most events
2. Chapter with the largest single WIC week event
3. Region with the largest single WIC week event.

\*\* Berg picked up 2 posters and 10 pins at AMEC to be used now.

*"No matter what people tell you, words and ideas can change the world." Robin Williams*

### PROFESSION DEVELOPMENT & EDUCATION

See page 9 for monthly Membership Meetings & Program Schedule



- ◆ Chapter's must hold 10 Membership meetings per year and conduct Association business at 4 of them.
- ◆ If you haven't had the opportunity, make sure to go to the NAWIC national website [www.nawic.org](http://www.nawic.org) and click on the banner to check out the Professional Development and Education Program page and all it has to offer the members. There are 6 Tracks of professional and personal growth programs (some of the tracks are still under construction) as well as Education options. There are also links to an Online Bookstore, Podcasts/Webinars, Career Center, Continuing Education, NEF and Conversations with NAWIC.



## Committee Reports

### PROFESSION DEVELOPMENT & EDUCATION -

**DUTIES:** Responsible for all arranging monthly meeting programs and provide program information to the Secretary (for thank you notes), Media Relations and Newsletter. The Chair may also submit seminar recommendations to Ways and Means.

**IMPORTANT** - do you have ideas for Programs, Seminars and other items to promote NAWIC?

### 2017 - 2018 Monthly Meeting/Program Schedule

OCTOBER 18, 2017 (Wed)	NOVEMBER 16, 2017 (Thurs)	DECEMBER 19, 2017
<p>Program: <b>WIC Fall Mixer</b>  <i>Women in all facets of the industry getting together!</i></p> <p>Location: 300 Lime Apartments                      Clubroom - Fargo, ND</p> <p>Meeting type: <b>Networking</b>                      Planned by: <b>Members</b></p>	<p>Program: <b>39th Annual Construction Industry Auction</b>  <i>Fundraiser to support our industry programs and scholarships</i></p> <p>Location: Holiday Inn, Royale Room                      Fargo, ND</p> <p>Meeting type: <b>Community</b>                      Planned by: <b>All Members</b></p>	<p>Program:                      Presenter:</p> <p>Location:</p> <p>Meeting type:                      Planned by:</p>
JANUARY 16, 2018	FEBRUARY 20, 2018	MARCH 4-10, 2018 WIC Week
<p>Program:                      Presenter:</p> <p>Location:</p> <p>Meeting type:                      Planned by:</p>	<p>Program:                      Presenter:</p> <p>Location:</p> <p>Meeting type:                      Planned by:</p>	<p>Program:                      Presenter:</p> <p>Location:</p> <p>Meeting type:                      Planned by:</p> 
APRIL 17, 2018	MAY 15, 2018	JUNE 19, 2018
<p>Program:                      Presenter:</p> <p>Location:</p> <p>Meeting type:                      Planned by:</p>	<p>Program:                      Presenter:</p> <p>Location:</p> <p>Meeting type:                      Planned by:</p>	<p>Program:                      Presenter:</p> <p>Location:</p> <p>Meeting type:                      Planned by:</p>
JULY 17, 2018	AUGUST 21, 2018	SEPTEMBER 18, 2018
<p>Program:                      Presenter:</p> <p>Location:</p> <p>Meeting type:                      Planned by:</p>	<p>Program:                      Presenter:</p> <p>Location:</p> <p>Meeting type:                      Planned by:</p>	<p>Program:                      Presenter:</p> <p>Location:</p> <p>Meeting type:                      Planned by:</p>

**T  
o  
u  
r  
s**

**S  
p  
e  
a  
k  
e  
r  
s**

**H  
a  
n  
d  
s  
-  
o  
n**





## Educating the Construction Industry Today . . . and Tomorrow

### NAWIC Education Foundation

1800 Pembroke Drive, Suite #300  
Orlando, FL 32810

NEF Administrator - Patti Susko

Phone #: 407-667-3417

Toll Free: 866-277-2883

Email: [nawicedu@gmail.com](mailto:nawicedu@gmail.com)

Website: [www.nef-edu.org](http://www.nef-edu.org)

### ADULT EDUCATION PROGRAMS

#### Certified Construction Associate (CCA) 6-parts

- Construction Document Technician (CDT)
- Estimating & Scheduling Practitioner (ESP)

#### Construction Industry Technician (CIT)

#### Construction Industry Specialist (CIS)

#### Construction Bookkeeping Technician (CBT)



Grades K - 6



Grades 8 - 12

Formerly known as  
Accessory Structure  
Project (ASP)



High School Division

Grades 9 -12

College Division

Freshman - Senior

### Youth Programs

#### Design Drafting



#### The 2017-2018 problem for the High School & College Divisions have been released!!

The program has been completely revised with CAD & Hand drafting combined into one (1) competition, is now available to High School (9-12) and College (Freshman - 1st year Senior) and can now be sponsored by Individual Sponsors (not just NAWIC Chapters).

#### Find the problem(s) and the new guidelines at:

<https://nef-edu.org/cad-design-drafting-competition>

#### Block Kids



#### Block Kids 2018 was held Sunday, October 8th.

At the Girl Scout Dakota Horizon Service Center  
1002 43rd St. S; Fargo, ND

#### Congratulations to the winners:

1st	Delanie Wind	1st grade (Daisy)
2nd	Sienna Newland	5th grade (Junior)
3rd	Hayden Loerzel	2nd grade (Brownie)

And all that participated.

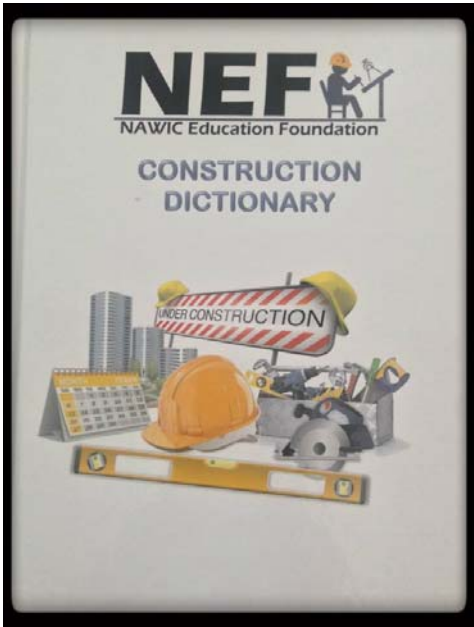
### Become an NEF Ambassador... Would you like to help promote NEF to all of the Construction Industry?

Ambassadors will receive:

- A **bronze pin** for completing **one** item,
- A **silver pin** for completing **two** items, and
- A **gold pin** for completing **three** items or more.



The criteria to become a NEF Ambassador and the nomination form are available on the NEF website at [www.nef-edu.org](http://www.nef-edu.org).



NEF's Construction Dictionary

**New/Updated** Edition with a fresh look...  
over 600 terms added!!!

Part #	List Price
7-01-01	\$ 65.00

**Get yours today!!!!**

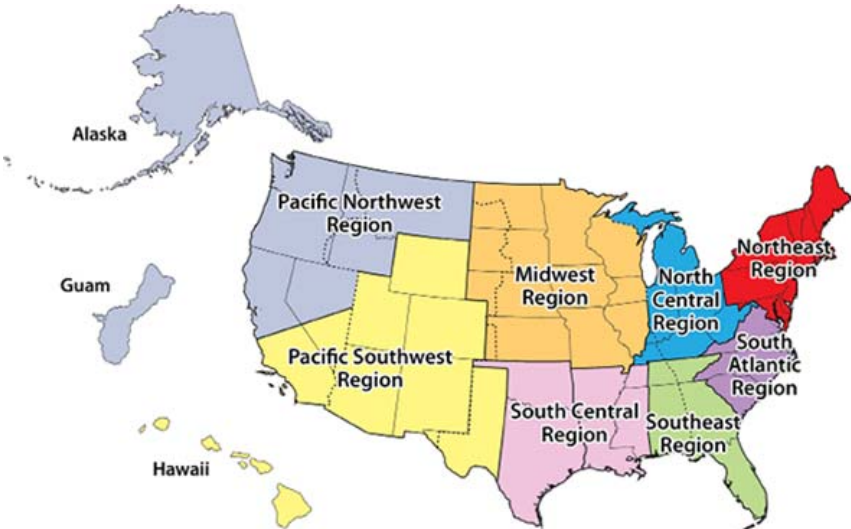


CORE PURPOSE

TO ENHANCE THE SUCCESS  
OF WOMEN IN THE  
CONSTRUCTION INDUSTRY.

CORE VALUES:

- BELIEVE
- PERSEVERE
- DARE



NAWIC Region Map

## Chapter #246 Sponsors



**ELECTRIC**

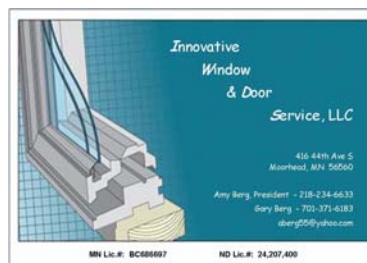


**TECHNOLOGIES**



Mortenson Construction

2017-2018  
Block Kids  
Event  
Sponsor



### Sponsorships Available:

#### Annual Sponsorships:

- \$250 - General Contractor
- \$200 - Contractor \*
- \$150 - Sub-Contractor\*
- \* Select one of the following events
  - Auction Fundraiser
  - Block Kids Program

#### Event Sponsorships:

- \$100 - Project Manager
- \$ 50 - Trades Person
- \$ 25 - Construction Supporter
- Single Events
  - Design Drafting Competition
  - WIC Week Events
  - Networking Event (s)

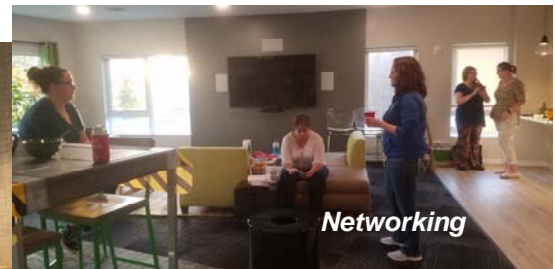
For complete sponsorship details and the commitment form go to the chapter website at [www.nawicfm246.org](http://www.nawicfm246.org).



## FM246 - Fall Mixer October 18th



Fabricators  
Reps



Networking



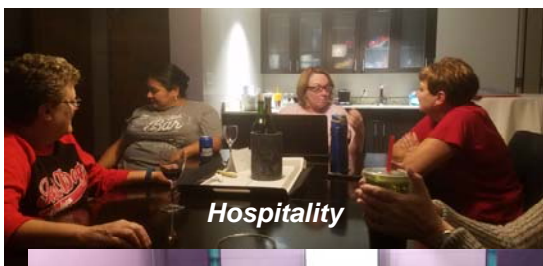
Networking



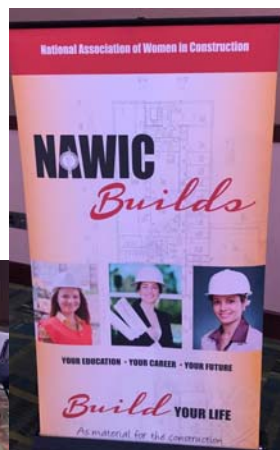
Chili Bar

## Midwest Region - Fall Conference

October 20 & 21 - Cedar Rapids, IA



Hospitality



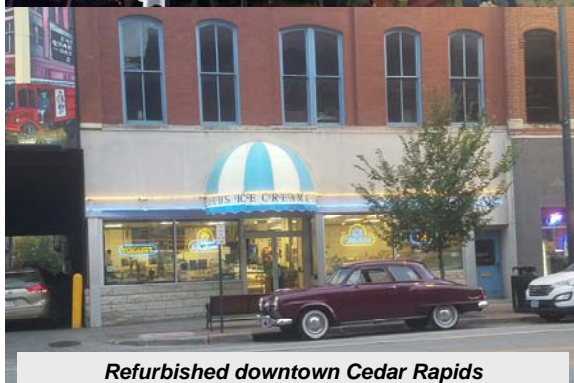
Attendees



Meeting



Chapter  
Sales



Refurbished downtown Cedar Rapids



Ghost  
Tour