

SAMPLE BALLOT  
SAMPLE BALLOT  
SAMPLE BALLOT  
SAMPLE BALLOT  
SAMPLE BALLOT  
SAMPLE BALLOT  
SAMPLE BALLOT  
SAMPLE BALLOT  
SAMPLE BALLOT  
SAMPLE BALLOT  
SAMPLE BALLOT  
SAMPLE BALLOT

SAMPLE BALLOT  
SAMPLE BALLOT  
SAMPLE BALLOT  
SAMPLE BALLOT  
SAMPLE BALLOT  
SAMPLE BALLOT  
SAMPLE BALLOT  
SAMPLE BALLOT  
SAMPLE BALLOT  
SAMPLE BALLOT  
SAMPLE BALLOT  
SAMPLE BALLOT

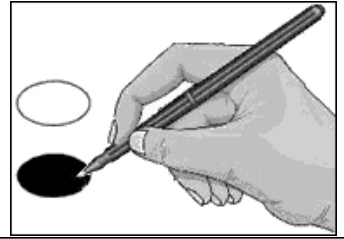
Sample Ballot  
Wayne County, North Carolina  
November 3, 2020

**B0007**



**BALLOT MARKING INSTRUCTIONS:**

- A. With the marking device provided or a black ball point pen, completely fill in the oval to the left of each candidate or selection of your choice as shown.
- B. Where authorized, you may write in a candidate by filling in the oval and writing the name on the Write-in line.
- C. If you tear, deface or wrongly mark this ballot, return it to request a replacement.



FEDERAL OFFICES	STATE OFFICES	
<b>President and Vice President of the United States</b> (You may vote for ONE)	<b>NC Governor</b> (You may vote for ONE)	<b>NC Commissioner of Labor</b> (You may vote for ONE)
<input type="radio"/> Donald J. Trump <input type="radio"/> Michael R. Pence Republican	<input type="radio"/> Al Pisano Constitution	<input type="radio"/> Josh Dobson Republican
<input type="radio"/> Joseph R. Biden <input type="radio"/> Kamala D. Harris Democrat	<input type="radio"/> Roy Cooper Democrat	<input type="radio"/> Jessica Holmes Democrat
<input type="radio"/> Don Blankenship <input type="radio"/> William Mohr Constitution	<b>NC Lieutenant Governor</b> (You may vote for ONE)	<b>NC Secretary of State</b> (You may vote for ONE)
<input type="radio"/> Howie Hawkins <input type="radio"/> Angela Walker Green	<input type="radio"/> Mark Robinson Republican	<input type="radio"/> E.C. Sykes Republican
<input type="radio"/> Jo Jorgensen <input type="radio"/> Jeremy (Spike) Cohen Libertarian	<input type="radio"/> Yvonne Lewis Holley Democrat	<input type="radio"/> Elaine Marshall Democrat
<input type="radio"/> Write-in	<b>NC Attorney General</b> (You may vote for ONE)	<b>NC Superintendent of Public Instruction</b> (You may vote for ONE)
<b>US Senate</b> (You may vote for ONE)	<input type="radio"/> Jim O'Neill Republican	<input type="radio"/> Catherine Truitt Republican
<input type="radio"/> Thom Tillis Republican	<input type="radio"/> Josh Stein Democrat	<input type="radio"/> Jen Mangrum Democrat
<input type="radio"/> Shannon W. Bray Libertarian	<b>NC Auditor</b> (You may vote for ONE)	<b>NC Treasurer</b> (You may vote for ONE)
<input type="radio"/> Cal Cunningham Democrat	<input type="radio"/> Anthony Wayne (Tony) Street Republican	<input type="radio"/> Ronnie Chatterji Democrat
<input type="radio"/> Kevin E. Hayes Constitution	<input type="radio"/> Beth A. Wood Democrat	<input type="radio"/> Dale R. Folwell Republican
<b>US House of Representatives District 1</b> (You may vote for ONE)	<b>NC Commissioner of Agriculture</b> (You may vote for ONE)	<b>NC Supreme Court Chief Justice Seat 1</b> (You may vote for ONE)
<input type="radio"/> Sandy Smith Republican	<input type="radio"/> Steve Troxler Republican	<input type="radio"/> Cheri Beasley Democrat
<input type="radio"/> G. K. Butterfield Democrat	<input type="radio"/> Jenna Wadsworth Democrat	<input type="radio"/> Paul Newby Republican
<b>NC Commissioner of Insurance</b> (You may vote for ONE)	<b>NC Commissioner of Insurance</b> (You may vote for ONE)	<b>NC Supreme Court Associate Justice Seat 2</b> (You may vote for ONE)
<input type="radio"/> Mike Causey Republican	<input type="radio"/> Wayne Goodwin Democrat	<input type="radio"/> Phil Berger, Jr. Republican
<b>- VOTE BOTH SIDES -</b>		<input type="radio"/> Lucy Inman Democrat
North Carolina		Continue Voting next side →
		Ballot Style B0007

SAMPLE BALLOT

SAMPLE BALLOT

SAMPLE BALLOT

SAMPLE BALLOT

SAMPLE BALLOT

SAMPLE BALLOT

SAMPLE BALLOT

SAMPLE BALLOT

SAMPLE BALLOT

SAMPLE BALLOT

SAMPLE BALLOT

SAMPLE BALLOT

<p><b>NC Supreme Court Associate Justice Seat 4</b> (You may vote for ONE)</p> <p><input type="radio"/> <b>Tamara Barringer</b> Republican</p> <p><input type="radio"/> <b>Mark Davis</b> Democrat</p>	<p><b>NC House of Representatives District 21</b> (You may vote for ONE)</p> <p><input type="radio"/> <b>Raymond E. Smith, Jr.</b> Democrat</p> <p><input type="radio"/> <b>Brent Heath</b> Republican</p>	<p><b>Board of Commissioners District 2</b> (You may vote for ONE)</p> <p><input type="radio"/> <b>Antonio Williams</b> Democrat</p>
	<b>DISTRICT OFFICES</b>	<p><b>Register of Deeds</b> (You may vote for ONE)</p>
<p><b>NC Court of Appeals Judge Seat 4</b> (You may vote for ONE)</p> <p><input type="radio"/> <b>Tricia Shields</b> Democrat</p> <p><input type="radio"/> <b>April C. Wood</b> Republican</p>	<p><b>NC District Court Judge District 8 Seat 2</b> (You may vote for ONE)</p> <p><input type="radio"/> <b>Jon Sargeant</b> Democrat</p>	<p><input type="radio"/> <b>Constance Bryant Coram</b> Democrat</p> <p><input type="radio"/> _____ Write-in</p>
		<b>NONPARTISAN OFFICES</b>
<p><b>NC Court of Appeals Judge Seat 5</b> (You may vote for ONE)</p> <p><input type="radio"/> <b>Lora Christine Cabbage</b> Democrat</p> <p><input type="radio"/> <b>Fred Gore</b> Republican</p>	<p><b>NC District Court Judge District 8 Seat 3</b> (You may vote for ONE)</p> <p><input type="radio"/> <b>Curtis Stackhouse</b> Democrat</p>	<p><b>Board of Education At-Large</b> (You may vote for ONE)</p> <p><input type="radio"/> <b>Tommy Sanders</b></p> <p><input type="radio"/> <b>Ven Faulk</b></p> <p><input type="radio"/> _____ Write-in</p>
<p><b>NC Court of Appeals Judge Seat 6</b> (You may vote for ONE)</p> <p><input type="radio"/> <b>Gray Styers</b> Democrat</p> <p><input type="radio"/> <b>Chris Dillon</b> Republican</p>	<p><b>NC District Court Judge District 8 Seat 4</b> (You may vote for ONE)</p> <p><input type="radio"/> <b>Charles P. Gaylor III</b> Democrat</p>	<p><b>Board of Education District 2</b> (You may vote for ONE)</p> <p><input type="radio"/> <b>Len Henderson</b></p> <p><input type="radio"/> _____ Write-in</p>
<p><b>NC Court of Appeals Judge Seat 7</b> (You may vote for ONE)</p> <p><input type="radio"/> <b>Reuben F. Young</b> Democrat</p> <p><input type="radio"/> <b>Jeff Carpenter</b> Republican</p>	<p><b>NC District Court Judge District 8 Seat 5</b> (You may vote for ONE)</p> <p><input type="radio"/> <b>Ericka Y. James</b> Democrat</p>	<p><b>Soil and Water Conservation District Supervisor</b> (You may vote for ONE)</p> <p><input type="radio"/> <b>Imari Olliver</b></p> <p><input type="radio"/> <b>Thomas Uzzell</b></p> <p><input type="radio"/> _____ Write-in</p>
<p><b>NC Court of Appeals Judge Seat 13</b> (You may vote for ONE)</p> <p><input type="radio"/> <b>Chris Brook</b> Democrat</p> <p><input type="radio"/> <b>Jefferson G. Griffin</b> Republican</p>	<p><b>NC District Court Judge District 8 Seat 6</b> (You may vote for ONE)</p> <p><input type="radio"/> <b>Greg Rouse</b> Democrat</p> <p><input type="radio"/> <b>Annette W. Turik</b> Republican</p>	<b>End of Ballot</b>
<p><b>NC State Senate District 7</b> (You may vote for ONE)</p> <p><input type="radio"/> <b>Jim Perry</b> Republican</p> <p><input type="radio"/> <b>Donna Lake</b> Democrat</p>	<b>COUNTY OFFICES</b>	
	<p><b>Board of Commissioners At-Large</b> (You may vote for ONE)</p> <p><input type="radio"/> <b>Alicia Britt Pierce</b> Democrat</p> <p><input type="radio"/> <b>Wayne Aycock</b> Republican</p>	
	<b>- VOTE BOTH SIDES -</b>	
	North Carolina	Ballot Style B0007