



Meet the Judge

Rita Curtis

Rita Curtis is a contemporary impressionist with a classical approach. She loves to paint in high key colors and is equally moved by the moody tonalities of the old masters.

Rita's paintings have received international and national recognition from International Artist magazine, Oil Painters of America, The Artist's magazine, Raymar Art, and the BoldBrush competition. She was the featured Artist at the 28th Oxford Fine Arts Fair, and she is a featured artist on the Daily Paintworks website. Landscape awards include Artists' Choice from Paint Annapolis and Best of Show from the Solomons Art Festival. Her work is included in the book 100 Plein Air Painters of the Mid-Atlantic. Many of her illustrations are in World Health Organization manuals around the globe. Images and colors from travels to Africa and Asia suffuse many of her paintings.

Rita learned the craft of figure painting from modern masters at New York's Art Student's League. She has a degree in literature & history from New York University, and she studied literature & art in Perugia, Italy.

<https://ritacurtis.com>

2018 Gallery Calendar

Jan 24-Feb 24 "Human Form" Judged Show

Mar 1-31 QAC Schools Student Show

April TBA

May 2-26 Annual 54th Open Judged ArtShow

April/May Group or Solo Shows concurrent with KIFA show, applications are available.

June 6-30 4th Annual Plein Air Show "Paint Stevensville"

Aug. 8-31 KIFA's Students Show

Sep 5-Oct 14 TBA (All-media) Judged Show

Oct 17-28 TBA

September/October Group or Solo Shows concurrent with KIFA show, applications are available.

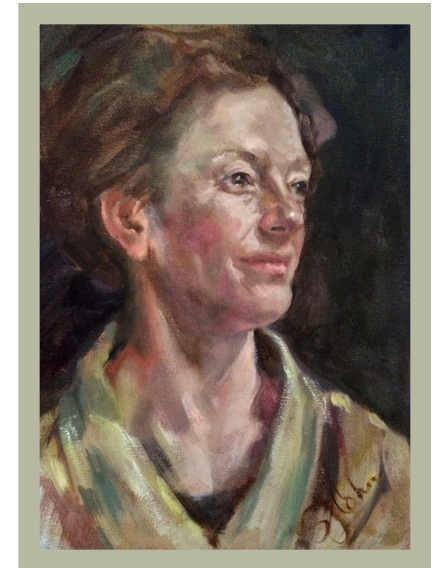
Nov 1-Dec 21 Small Works / Wearable & Decorative Arts / Holiday Gift

KENT ISLAND
FEDERATION OF ARTS, INC.

Human Form Show

January 24 - February 24, 2018

An Open Judged Show in
Celebration of the Figurative Art



2017 First Place Oil/Acrylic "Lise" by Sandy Cohen

Opening Reception

Saturday, February 3

3:00-5:00 p.m.

(Snow Date is February 10)



KENT ISLAND FEDERATION OF ARTS, INC.
405 MAIN STREET
STEVENSVILLE MD 21666



The Human Form

An Open Judged Show of Figurative Works

January 24 - February 24, 2018

This show is non-juried. Each artist may enter up to three works. Work must be original, completed within the last two years, must not have been previously shown at KIFA's gallery shows, and must not infringe upon any copyright. No reproductions will be accepted.

Sculptures must include their own base or fit on a KIFA pedestal. Sculpture artists must be prepared to assist in placing their work in the gallery. Maximum size including base: 6' high x 3' wide and deep.

2-D work must be dry, suitably framed, wired, and ready to hang. If not, it is at the discretion of the gallery director whether to hang the piece. No saw tooth hangers. Maximum size frame: 40" x 40". Minimum size frame: 8"x10". All works on paper must be under glass with no exposed glass edges.

KIFA reserves the right to reject works deemed unsuitable. All entered works must remain on display through the end of the show.

KIFA is not liable for loss of or damage to artwork. Reasonable care will be taken to ensure the safety of your artwork.

Non-refundable fee must be included with entry. KIFA requires a 25% commission on all sales.

Accepted Media

Oil/Acrylic, Water Media (watercolor, gouache), other 2D media (pastel, pencil, collage, etc.), hand-pulled prints and sculpture.

KIFA reserves the right to re-categorize entries.

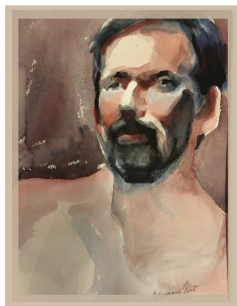
Awards (Cash and Ribbons)

Entries will be judged on overall design concept, creativity, and craftsmanship.

Best in Show

First and Second Places in final categories

Honorable Mentions at Judge's discretion



2017 First Place Watercolor
"Portrait of Wayne" by
Marianne Kost

Show Calendar

Pre-registration is required.

Wed. Jan. 17	Postmark deadline for entry
Mon. Jan. 22	Drop off 1 - 6 pm
Wed. Jan. 24	Show Opens
Sat. Feb. 3	Reception 3 - 5 pm Awards at 4:00 pm
Sat. Feb. 24	Show Closes
Tues. Feb. 27	Pick up 10 - 4 pm

Entry Fees

Members: \$15 first piece/\$20 up to 3 works

Non-members: \$30 up to 3 works.

**KIFA membership form is available online at
www.kifa.us**

As a member you receive discounts for shows and classes:

\$35 Senior (65+) \$40 Individual \$50 Family

Mail to:

KIFA / HF Show

405 Main St, Stevensville, MD 21666

Checks payable to KIFA must be enclosed with entry forms and can include membership fee.

By entering, you agree to all stipulations of this prospectus.

Questions?

Contact Show Chair: Judy Specht

410.643.3347 or KIFA office:

info@kifa.us / 410.643.7424

Artist's Information - Mail with entry

Name _____

Address _____

Phone _____

Email _____

Entry Form Part 1 - Mail with entry

Name _____

Title _____

Price _____ Medium _____

Entry Form Part 1 - Mail with entry

Name _____

Title _____

Price _____ Medium _____

Entry Form Part 1 - Mail with entry

Name _____

Title _____

Price _____ Medium _____

Entry Form Part 2 - Attach to work

Name _____

Title _____

Price _____ Medium _____

Entry Form Part 2 - Attach to work

Name _____

Title _____

Price _____ Medium _____

Entry Form Part 2 - Attach to work

Name _____

Title _____

Price _____ Medium _____