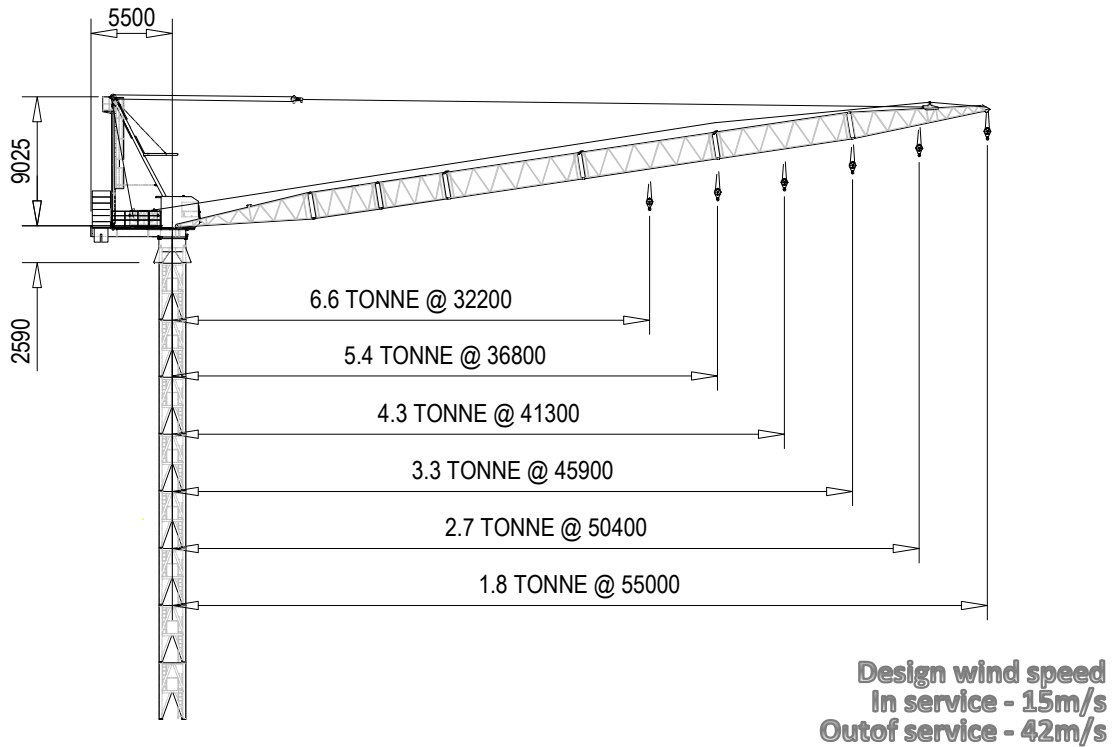


TECHNICAL DATA SHEET



Various options in bottom structure configuration (such as freestanding, external climbing and internal climbing) and crane parking position available to suit site condition. Contact Favelle Favco sales and service representatives for consultation.

SAFE WORKING LOAD - HOIST WINCH 4 TONNE x 3-FALL

Boom Length	32.2		36.8		41.4		46.0		50.6		55.2	
Minimum Radius	3.3		3.7		4.0		4.3		4.6		5.0	
Radius	SWL	Angle	SWL	Angle	SWL	Angle	SWL	Angle	SWL	Angle	SWL	Angle
7.5	12.0	78.4	12.0	79.8	12.0	81.0	12.0	81.9	12.0	82.6	12.0	83.3
10.0	12.0	73.8	12.0	75.8	12.0	77.4	12.0	78.7	12.0	79.8	12.0	80.6
12.5	12.0	69.0	12.0	71.8	12.0	73.9	12.0	75.5	12.0	76.9	12.0	78.0
15.0	12.0	64.1	12.0	67.6	12.0	70.2	12.0	72.3	12.0	73.9	12.0	75.3
17.5	12.0	59.0	12.0	63.3	12.0	66.5	12.0	68.9	12.0	70.9	11.5	72.6
20.0	12.0	53.6	11.9	58.8	11.6	62.6	11.0	65.5	10.6	67.9	10.2	69.8
22.5	10.6	47.7	10.3	54.0	10.0	58.6	9.7	62.0	9.3	64.8	8.8	67.0
25.0	9.3	41.2	9.0	49.0	8.7	54.4	8.4	58.4	8.1	61.6	7.7	64.2
27.5	8.2	33.7	8.0	43.5	7.7	49.9	7.4	54.7	7.1	58.3	6.8	61.2
30.0	7.4	24.1	7.1	37.3	6.8	45.2	6.6	50.7	6.3	54.9	6.0	58.2
32.5			6.4	30.1	6.1	40.0	5.8	46.5	5.6	51.3	5.3	55.1
35.0			5.8	20.7	5.5	34.1	5.2	41.9	4.9	47.5	4.7	51.8
37.5					5.0	27.1	4.7	37.0	4.4	43.5	4.2	48.4
40.0					4.5	17.6	4.2	31.3	4.0	39.2	3.7	44.8
42.5									3.6	34.3	3.3	40.9
45.0									3.2	28.8	2.9	36.7
47.5									2.9	22.0	2.6	32.0
50.0											2.3	26.6
52.5											2.0	19.8
Maximum Radius	6.6	8.8	5.4	8.8	4.3	8.8	3.3	8.8	2.7	8.8	1.8	8.8
	32.2		36.8		41.3		45.9		50.4		55.0	

Dimension in unit of meter. Rated load in unit of tonne. Angle in unit of degree.

SAFE WORKING LOAD - HOIST WINCH 4 TONNE x 2-FALL

Boom Length	32.2		36.8		41.4		46.0		50.6		55.2			
Minimum Radius	3.4		3.7		4.1		4.4		4.7		5.1			
Radius	SWL	Angle	SWL	Angle	SWL	Angle	SWL	Angle	SWL	Angle	SWL	Angle		
7.5	8.0	78.5	8.0	80.0	8.0	80.8	8.0	82.0	8.0	82.7	8.0	83.3		
10.0	8.0	73.9	8.0	76.0	8.0	77.3	8.0	78.8	8.0	79.9	8.0	80.7		
12.5	8.0	69.2	8.0	71.9	8.0	73.7	8.0	75.6	8.0	77.0	8.0	78.1		
15.0	8.0	64.2	8.0	67.7	8.0	70.1	8.0	72.4	8.0	74.0	8.0	75.4		
17.5	8.0	59.1	8.0	63.4	8.0	66.3	8.0	69.0	8.0	71.0	8.0	72.7		
20.0	8.0	53.7	8.0	58.9	8.0	62.4	8.0	65.6	8.0	68.0	8.0	69.9		
22.5	8.0	47.8	8.0	54.1	8.0	58.4	8.0	62.1	8.0	64.9	8.0	67.1		
25.0	8.0	41.3	8.0	49.1	8.0	54.2	8.0	58.5	8.0	61.7	8.0	64.2		
27.5	8.0	33.8	8.0	43.6	8.0	49.8	7.6	54.7	7.5	58.4	6.9	61.3		
30.0	8.0	24.2	7.5	37.4	7.1	45.1	6.8	50.8	6.5	55.0	6.1	58.3		
32.5	Dimension in unit of meter. Rated load in unit of tonne. Angle in unit of degree.		6.8	30.2	6.4	39.9	6.1	46.6	5.8	51.4	5.4	55.1		
35.0			6.2	20.7	5.8	34.0	5.5	42.0	5.2	47.6	4.8	51.9		
37.5			Dimension in unit of meter. Rated load in unit of tonne. Angle in unit of degree.		Dimension in unit of meter. Rated load in unit of tonne. Angle in unit of degree.		5.3	27.0	5.0	37.0	4.6	43.6	4.3	48.5
40.0							4.8	17.7	4.5	31.3	4.2	39.2	3.9	44.8
42.5			Dimension in unit of meter. Rated load in unit of tonne. Angle in unit of degree.		Dimension in unit of meter. Rated load in unit of tonne. Angle in unit of degree.		Dimension in unit of meter. Rated load in unit of tonne. Angle in unit of degree.		4.1	24.5	3.8	34.4	3.5	41.0
45.0									Dimension in unit of meter. Rated load in unit of tonne. Angle in unit of degree.		Dimension in unit of meter. Rated load in unit of tonne. Angle in unit of degree.		Dimension in unit of meter. Rated load in unit of tonne. Angle in unit of degree.	
47.5			Dimension in unit of meter. Rated load in unit of tonne. Angle in unit of degree.		Dimension in unit of meter. Rated load in unit of tonne. Angle in unit of degree.		Dimension in unit of meter. Rated load in unit of tonne. Angle in unit of degree.							
50.0									Dimension in unit of meter. Rated load in unit of tonne. Angle in unit of degree.		Dimension in unit of meter. Rated load in unit of tonne. Angle in unit of degree.		Dimension in unit of meter. Rated load in unit of tonne. Angle in unit of degree.	
52.5			Dimension in unit of meter. Rated load in unit of tonne. Angle in unit of degree.		Dimension in unit of meter. Rated load in unit of tonne. Angle in unit of degree.		Dimension in unit of meter. Rated load in unit of tonne. Angle in unit of degree.							
Maximum Radius									7.3	8.8	5.8	8.8	4.5	15.0
	32.3		36.8		41.4		45.9		50.5		55.0			

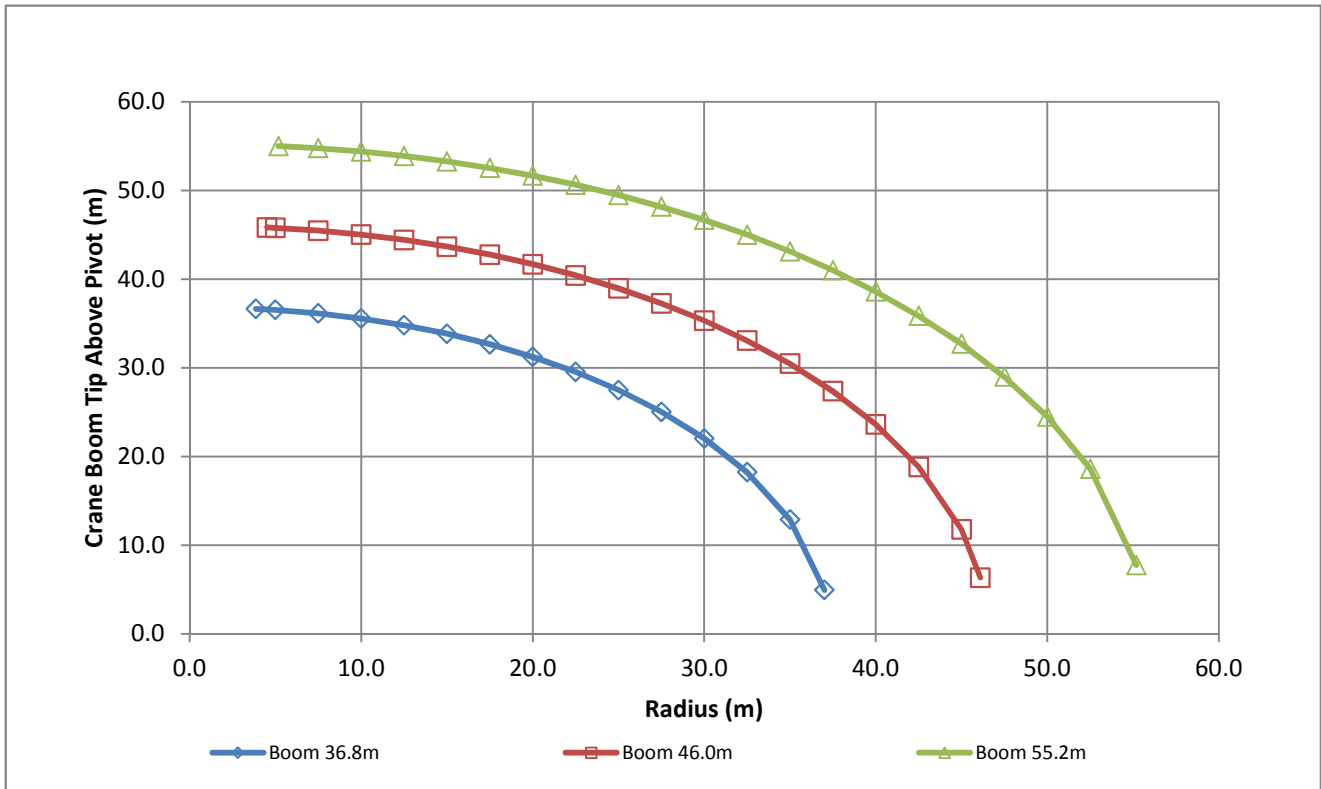
SAFE WORKING LOAD - HOIST WINCH 4 TONNE x 1-FALL

Length	32.2		36.8		41.4		46.0		50.6		55.2			
Minimum Radius	3.5		3.9		4.2		4.5		4.8		5.2			
Radius	SWL	Angle	SWL	Angle	SWL	Angle	SWL	Angle	SWL	Angle	SWL	Angle		
7.5	4.0	78.7	4.0	80.2	4.0	81.3	4.0	82.2	4.0	85.9	4.0	83.5		
10.0	4.0	74.1	4.0	76.2	4.0	77.7	4.0	79.0	4.0	83.5	4.0	80.8		
12.5	4.0	69.4	4.0	72.1	4.0	74.2	4.0	75.8	4.0	80.8	4.0	78.2		
15.0	4.0	64.5	4.0	67.9	4.0	70.5	4.0	72.5	4.0	78.2	4.0	75.5		
17.5	4.0	59.4	4.0	63.6	4.0	66.8	4.0	69.2	4.0	75.5	4.0	72.8		
20.0	4.0	54.0	4.0	59.1	4.0	62.9	4.0	65.8	4.0	72.8	4.0	70.1		
22.5	4.0	48.2	4.0	54.4	4.0	58.9	4.0	62.3	4.0	70.1	4.0	67.3		
25.0	4.0	41.8	4.0	49.4	4.0	54.7	4.0	58.7	4.0	67.3	4.0	64.4		
27.5	4.0	34.4	4.0	44.0	4.0	50.3	4.0	55.0	4.0	64.4	4.0	61.5		
30.0	4.0	25.0	4.0	37.9	4.0	45.6	4.0	51.0	4.0	61.5	4.0	58.5		
32.5	Dimension in unit of meter. Rated load in unit of tonne. Angle in unit of degree.		4.0	30.8	4.0	40.4	4.0	46.8	4.0	58.5	4.0	55.3		
35.0			4.0	21.6	4.0	34.6	4.0	42.3	4.0	55.3	4.0	52.1		
37.5			Dimension in unit of meter. Rated load in unit of tonne. Angle in unit of degree.		Dimension in unit of meter. Rated load in unit of tonne. Angle in unit of degree.		4.0	27.7	4.0	37.4	4.0	52.1	4.0	48.7
40.0							4.0	18.5	4.0	31.8	4.0	48.7	4.0	45.1
42.5			Dimension in unit of meter. Rated load in unit of tonne. Angle in unit of degree.		Dimension in unit of meter. Rated load in unit of tonne. Angle in unit of degree.		Dimension in unit of meter. Rated load in unit of tonne. Angle in unit of degree.		4.0	25.0	4.0	45.1	3.7	41.2
45.0									Dimension in unit of meter. Rated load in unit of tonne. Angle in unit of degree.		Dimension in unit of meter. Rated load in unit of tonne. Angle in unit of degree.		Dimension in unit of meter. Rated load in unit of tonne. Angle in unit of degree.	
47.5			Dimension in unit of meter. Rated load in unit of tonne. Angle in unit of degree.		Dimension in unit of meter. Rated load in unit of tonne. Angle in unit of degree.		Dimension in unit of meter. Rated load in unit of tonne. Angle in unit of degree.							
50.0									Dimension in unit of meter. Rated load in unit of tonne. Angle in unit of degree.		Dimension in unit of meter. Rated load in unit of tonne. Angle in unit of degree.		Dimension in unit of meter. Rated load in unit of tonne. Angle in unit of degree.	
52.5			Dimension in unit of meter. Rated load in unit of tonne. Angle in unit of degree.		Dimension in unit of meter. Rated load in unit of tonne. Angle in unit of degree.		Dimension in unit of meter. Rated load in unit of tonne. Angle in unit of degree.							
Maximum Radius									4.0	8.8	4.0	8.8	4.0	8.8
	32.5		37.0		41.5		46.1		50.6		55.2			

Note:

This datasheet is published for preliminary consideration and reference guide only. This datasheet should not be used for lifting purposes. Continuous engineering and improvements makes it necessary that Favelle Favco reserve the right to make changes to specification and equipment without prior notice.

CRANE REACH

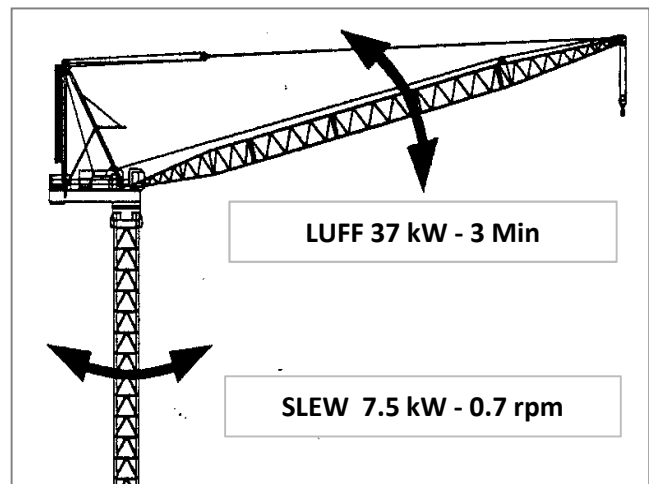
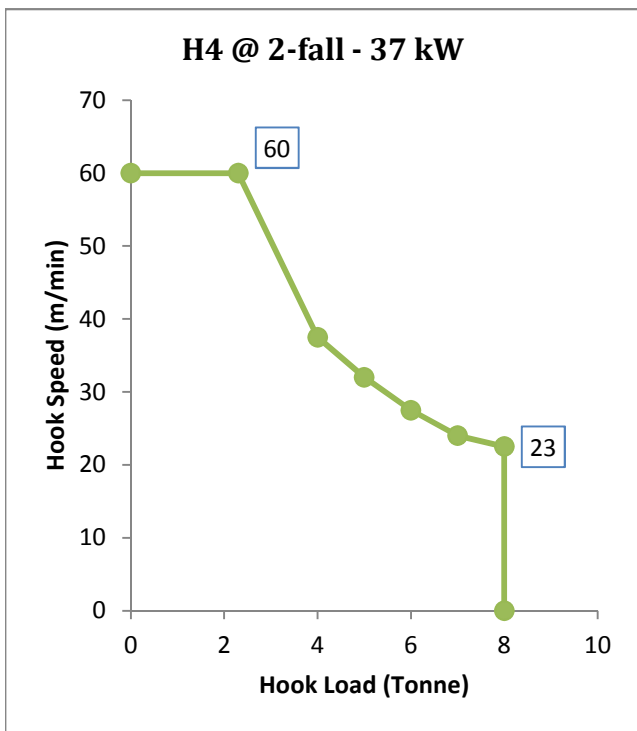
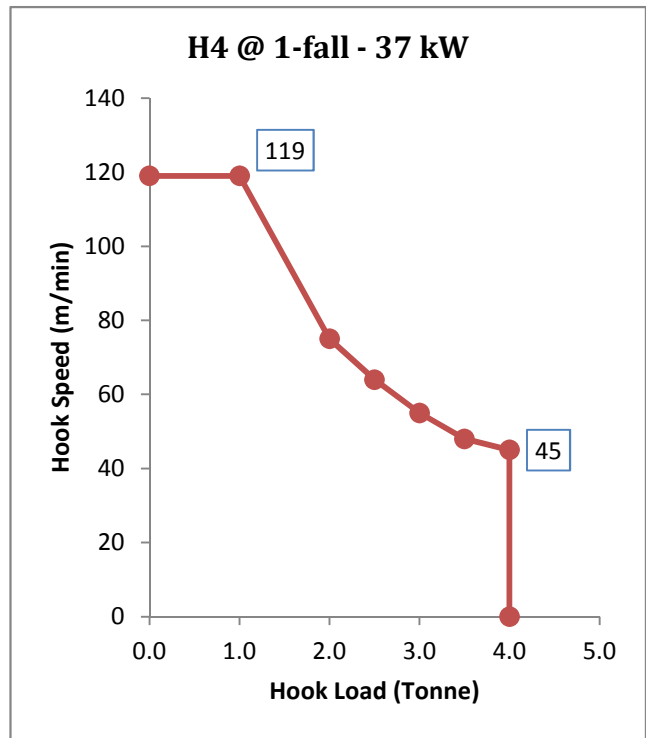
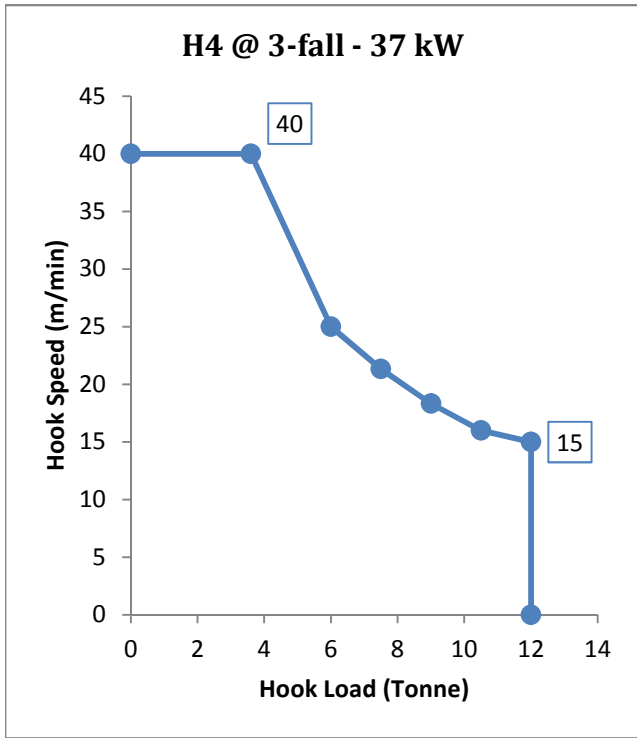


COMPONENT WEIGHT & GEOMETRY

Geometry in meter. Weight in tonne.

COMPONENT	WEIGHT	QTY	L	H	W
Machinery Deck	3.41	1	6.53	0.89	2.07
Slew Drive	0.33	1	1.45	0.54	0.48
Slewing	0.81	1	1.98	0.12	1.98
Cabin	1.28	1	3.00	2.70	2.10
Cabin Platform	0.47	1	5.72	1.30	2.33
Mast Assembly	2.77	1	10.41	1.20	2.00
Slew Mount	1.10	1	1.80	0.77	1.80
Counterweight	3.30	6	2.80	0.43	1.23
Counterweight	1.40	3	0.92	1.00	0.60
Electric Winches + 500m Hoist Rope + Luff Rope	2.89	1	2.20	1.25	1.90
Boom Bottom 9.2m	0.84	1	9.39	2.02	1.89
Boom Extension 4.6m	0.43	1	4.72	2.02	1.89
Boom Extension 9.2m	0.64	3	9.32	2.02	1.89
Boom Top 9.2m	0.77	1	9.52	2.02	1.95
Bridle	0.12	1	0.80	0.55	0.36
3-fall 12T Hook	0.65	1	1.57	0.50	0.24

OPERATION PERFORMANCE - ELECTRIC DRIVES MK180F



Power Supply - 400-440 VAC, 50/60 Hz
Consumption - 125 kVA
Main Fuse - 125 A
Recommended Generator Size - 450 kVA