

FIRST FLOOR LIGHTING PLAN
SCALE : 1/8" = 1' - 0"

ELECTRIC SYMBOLS			
SYMBOL	DESCRIPTION	SYMBOL	DESCRIPTION
	120V DUPLEX RECEPTACLE		PRESET MARK 7 DIMMER/1T/W / SINGLE POLE OR 3 POLE
	120V QUAD RECEPTACLE		THREE WAY SWITCH
	120V DUPLEX RECEPTACLE W/ (2) USB		OCCUPANCY SENSOR SWITCH
	120V GFCI DUPLEX RECEPTACLE		OCCUPANCY SENSOR SWITCH
	120V GFCI WATERPROOF DUPLEX		PHOTOCELL
	120V RECEPTACLE		MOTOR
	120V DUPLEX FLOOR RECEPTACLE		MOTOR W/ LIGHT
	WALL LIGHT FIXTURE		JUNCTION BOX
	CEILING FIXTURE		SAFETY SWITCH
	PENDANT CEILING FIXTURE		TELEPHONE RECEPTACLE
	2X2 LED LIGHT FIXTURE		CAT6 NETWORK RECEPTACLE
	STEP LIGHT FIXTURE		TELEPHONE/CAT6 NETWORK RECEPT
	EXIT LIGHT		CABLE TELEVISION RECEPTACLE
	REMOTE EM. LIGHT HEAD		CIRCUIT LEG & CIRCUIT #
	BATTERY PACK/EM. LIGHTS		HEIGHT ABOVE FINISHED FLOOR
	DOOR BELL - BUTTON		FIRE ALARM PULL
	DOOR BELL		FIRE ALARM STROBE
	SMOKE DETECTOR		FIRE ALARM HORN & STROBE
	HEAT DETECTOR		FIRE ALARM HORN

KEY NOTES:

1. ALL RESTROOMS, ELECTRICAL ROOMS SHALL HAVE SEPARATE EMERGENCY WALL PACK LIGHT. ALL EMERGENCY LIGHT AND EXIT LIGHTING SHALL BE WIRED TO THE NORMAL WIRING CIRCUIT WHERE THEY ARE INSTALLED. THE BATTERY PACK SHALL BE TIED INTO THE HOT LEG AND AHEAD OF THE ROOM SWITCH.
2. ALL EXTERIOR ILLUMINATION SHALL BE NON APPARENT FROM THE ADJACENT PROPERTY. ALL LIGHT SOURCES USED AT THE BOUNDARY BOUNDARY LINES SHALL BE SHIELDED TO ELIMINATE PROBLEMS OF GLARE, REFLECTIONS AND PREVENT EXCESSIVE OR DIRECT ILLUMINATION.
3. ALL CIRCUITS WHICH CONTRA EMERGENCY AND/OR EXIT LIGHTING MUST BE PROPERLY LABELED.

GENERAL ELECTRIC NOTES

1. ALL ELECTRIC WORK SHALL COMPLY WITH NFPA 70/NEC AND IBC ARTICLE 27 CURRENT EDITIONS. ALL ELECTRICAL WORK SHALL BE INSPECTED AND APPROVED. THE CONTRACTOR SHALL PAY FOR ALL SUCH INSPECTIONS.
2. ALL UNDERGROUND ENTRANCE SERVICE WIRE SHALL BE RUN IN UL APPROVED PLASTIC CONDUIT WITHOUT SPICE FROM UTILITY SERVICE DROP TO WALL MOUNTED METER/METER BOX (MS & CABINET AS REQUIRED BY UTILITY CO). FROM METER OR CTS RUN GROUNDED SERVICE INTO BUILDING AND TERMINATE SERVICE AT AN APPROVED MEANS OF DISCONNECT.
3. MINIMUM WIRE SIZE FOR ALL 20 AMP CIRCUITS SHALL BE #12 AWG. MINIMUM WIRE SIZE FOR ALL 15 AMP CIRCUITS SHALL BE #14 AWG. USE ONLY MC OR EMT WIRING/RACEWAY FOR BRANCH CIRCUITS & RIGID STL CONDUIT @ INTERIOR EXPOSED TO DAMAGE.
4. ALL WIRE SHALL BE RUN CONCEALED EXCEPT AS NOTED.
5. ALL WIRING DEVICES SHALL BE HUBBELL COMMERCIAL GRADE. ALL SWITCHES SHALL BE 46" AFF. ALL RECEPTACLES SHALL BE 18" AFF AND VERIFY LOCATION OF ALL OUTLETS WITH OWNER AND ARCHITECT BEFORE INSTALLATION.
6. ALL ELECTRICAL EQUIPMENT SHALL BE NEMA AND UL RATED. INTERIOR EQUIPMENT SHALL BE NEMA 1 AND EXTERIOR EQUIPMENT SHALL BE NEMA 3R.
7. ALL CIRCUITS SHALL BE CLEARLY MARKED ON THE PANELBOARD. ALL CIRCUITS SHALL BE WIRED IN A LOGICAL AND CONSISTENT METHOD I.E. BY ROOM OR BY POWER, LIGHTING, & EQUIPMENT.
8. COMPLETE SUPERVISED CODE APPROVED FIRE DETECTION AND ALARM SYSTEM BY OTHERS
9. PROVIDE APPROVED IN DUCT FIRE DETECTION SMOKE DETECTOR WHEN ACTIVATED WILL SHUT DOWN HVAC SYSTEM. IN UNIT SIZES ABOVE 5 TON (1000 CFM).
10. INCREASE SIZE OF WIRE FOR CIRCUIT RUNS IN EXCESS OF 100'. MAXIMUM VOLTAGE DROP 3%.
11. THE CONTRACTOR SHALL WIRE ALL EQUIPMENT SUPPLIED BY THE OWNER OR OWNER'S VENDOR.
12. THE CONTRACTOR SHALL BALANCE PHASES.
13. GRAND PER NEC ARTICLE 250, TEST GROUND RESISTANCE PRIOR TO CONNECTION TO ELECTRICAL SYSTEM - 3 OHMS MAX RESISTANCE.
14. ALL ELECTRICAL BOXES IN RATED ASSEMBLIES SHALL BE LISTED FOR THE REQUIRED ASSEMBLY RATING & INSTALLED PER IBC TO MAINTAIN FIRE RATING.
15. PANEL CLEARANCE TO BE PROVIDED ACCORDING TO NEC ART. 110-26, 32, & 33.
16. PROVIDE B-LEVEL SWITCHING OR NOTION SENSOR ON CORRIDOR IN ACCORDANCE WITH IECG 805.2.1.1 TO REDUCE LIGHTING LOAD IN A REASONABLE UNIFORM PATTERN BY AT LEAST 50%.
17. CONNECT EMERGENCY AND EXIT LIGHTS HARDWIRED TO NEAREST LIGHTING OR POWER CIRCUIT AHEAD OF LIGHT SWITCH, IT SHOULD BE CLEARLY IDENTIFIED IN EACH PANEL DOOR SCHEDULE.

FIRE ALARM NOTES:

1. CONTRACTOR SHALL INSTALL A COMPLETE FIRE ALARM SYSTEM TO HAVE STATE CERTIFIED AND LOCAL AUTHORITY APPROVE A DESIGN-BUILD FIRE ALARM AND DETECTION SYSTEM.
2. ELECTRICAL CONTRACTOR SHALL INSTALL SMOKE/HEAT DETECTOR IN ALL PUBLIC AREAS ALL AREAS WHERE STAFF WILL PERFORM A DUTY AND AS REQUIRED BY LOCAL CODE AND LIFE SAFETY STANDARDS.

LIGHT SWITCHES:

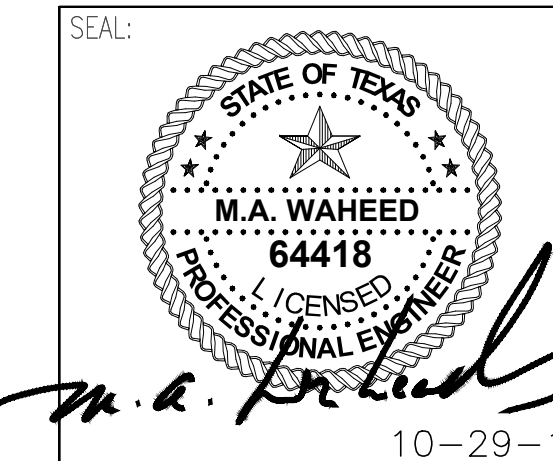
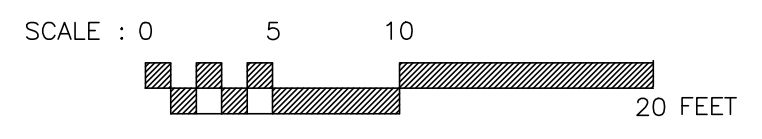
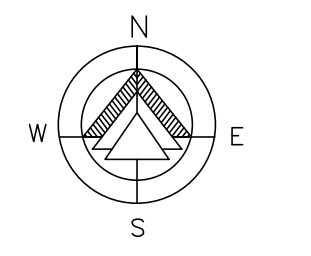
LIGHT SWITCHES SHOWN ARE REPRESENTATIVE IN NATURE ONLY. ALL INTERIOR LIGHTING SHALL BE ON DIMMABLE SWITCHES CONTRACTOR SHALL VERIFY AND COORDINATE WITH OWNER AND ARCHITECT FOR EXACT LOCATION AND TYPES OF SWITCHES TO BE INSTALLED.

LIGHTING FIXTURE SCHEDULE

SYMBOL	CATALOG #	LAMPS	VOLT	WATTS	CCT	DESCRIPTION
	FPPEL-22-LED-40-DMV-WH-50	40W LED	120	40	5000K	2' X 2' EDGELIT FLAT PANEL LIGHT
	LD8A-30-1-DMX-ERBA-30-8-30-BLWO-LI-WF	42W LED	120	42	4,000K	8" WIDE LED RECESSED DOWNLIGHT, 1 - 100% DIMMING
	ENV-E02-LED-E1-BL2-BK-ULG-PC	47.0W LED	120	47.0	4,000K	WALL MOUNTED UP/DOWN LIGHT (SUITABLE FOR WET LOCATION)
	ENV-E02-LED-E1-BL2-BK-BBB-ULG-PC	47.0W LED	120	47.0	4,000K	WALL MOUNTED UP/DOWN LIGHT (EMERGENCY BATTERY BACKUP)
	138022-BZ-3-F	2.6W LED	120	2.6	3,200K	STEP2 ENERGY EFFICIENT OUTDOOR STEP LIGHT
	COLOR KINETICS # 523-000002-07	20.5W LED	120	20.5	5000K	4' LED PERFORMANCE COVE LUMINARIE, ADJUSTABLE, PROGRAMMABLE CCT, 2ND LEVEL INTERIOR COVE
	COLOR KINETICS # 523-000002-03	20.5W LED	120	20.5	5000K	12" LED PERFORMANCE COVE LUMINARIE, ADJUSTABLE, PROGRAMMABLE CCT
	EXIT/EL-SF-G-CP-WHT-EM	5W LED	120	5	--	EXIT SIGN WITH GREEN LETTERS, PROVIDE WITH EMERGENCY BATTERY, SURFACE OR RECESSED PER CONDITIONS
	EMER/MR16/CP-WHITE	-----	120	--	--	PROVIDE WITH EMERGENCY BATTERY, CONNECT AHEAD OF LIGHT SWITCH/DIMMING LEG.

GENERAL NOTES:

1. COMMENCEMENT OF WORK BY ANY CONTRACTOR OR SUBCONTRACTOR SHALL BE CONSIDERED EVIDENCE THAT HE HAS INSPECTED AND ACCEPTED ALL CONDITIONS INVOLVED IN HIS WORK AND FINDS THEM SATISFACTORY.
2. PRIOR TO THE COMMENCEMENT OF ANY WORK THE CONTRACTOR SHALL ANALYZE THE JOBSITE CONDITIONS, ALL DIMENSIONS, SETBACKS, PROPERTY LIMITS, UTILITY CONDITIONS. IF THE CONTRACTOR OBSERVES ANY ERRORS OR OMISSIONS IN THE CONSTRUCTION DOCUMENTS HE SHALL PROMPTLY NOTIFY THE PROJECT SUPERINTENDENT FOR CLARIFICATION. IF SUCH WORK PROCEEDS WITHOUT CLARIFICATION IT IS AT THE RISK OF THE CONTRACTOR. ANY CHANGES MADE BY CONTRACTOR PRIOR TO ARCHITECT'S CLARIFICATION SHALL BE AT THE CONTRACTOR'S RISK. THE SETTLEMENT OF ANY COMPLICATIONS OR DISPUTES ARISING FROM THIS SHALL BE AT THE EXPENSE OF THE CONTRACTOR.
3. ALL DISCIPLINES ARE TO REFER BACK TO ARCHITECTURAL DRAWINGS FOR DIMENSIONS. NO MEASUREMENTS ARE TO BE SCALED FROM THE DRAWINGS.
4. ELECTRICAL CONTRACTOR SHALL SUBMIT LIGHT FIXTURE SUBMITTALS TO OWNER AND ARCHITECT FOR APPROVAL BEFORE INSTALLATION. ANY INSTALLATION BY CONTRACTOR PRIOR TO ARCHITECT'S AND OWNER APPROVAL SHALL BE AT THE CONTRACTOR'S RISK. THE SETTLEMENT OF ANY COMPLICATIONS OR DISPUTES ARISING FROM THIS SHALL BE AT THE EXPENSE OF THE CONTRACTOR.



CONSULTANT:
WAHEED CONSULTING
MECHANICAL-ELECTRICAL-PLUMBING SYSTEM DESIGNS
Registration No. F-6336

SHASHI D. PATEL AIA NCARB
ARCHITECTS AND PLANNERS
442 EAST END AVE. STE-B, PITTSBURGH PA 15221

FIRST FLOOR LIGHTING PLAN
CONSTRUCTION DOCUMENT PHASE

RADHA KRISHNA TEMPLE
ALLEN TEXAS

TEL (817) 793 2010, FAX (972) 442 4063
420 PARKSIDE ST. MURPHY, TX, 75094
E-mail: waheedmep@yahoo.com

dwg. 07162013
no.