



Agility Presented by the GERMAN SHEPHERD DOG CLUB OF OREGON



Nov 30 – Dec 2, 2018, 2018

Clark County Fairgrounds
17402 NE Delfel Rd., Ridgefield, WA 98642

Judges:

Ken Boyd

Friday: All FAST, Premier Standard, All Standard
Saturday: T2B, Premier JWW, All JWW
Sunday: All FAST, Premier Standard, All Standard

Jack Cadalso

Friday: T2B, Premier JWW, All JWW
Saturday: All FAST, Premier Std, All Standard
Sunday: T2B, Premier JWW, All JWW

Running Order and Class Information

Please check all your trial information carefully on the confirmation you were sent and notify me immediately in writing with any corrections. You can contact me via email at LKSAGE@aol.com or by phone (503) 840-4303 (cell).

SITE INFO: This trial will be held in two rings indoors on packed dirt. There is plenty of crating inside the building on concrete. **You may set up your crating space Thursday afternoon beginning at 12:00 pm. Also attached to your confirmation email is a "Parking Pass". You will need to show this at the gate in order to enter the area to the horse arena. If you have sent in an RV Camping form, you can pick up your official "Hang Tag" from me. These MUST be displayed in your vehicle.**

DIRECTIONS TO THE TRIAL SITE:

From I-5: Take EXIT 9 (in Washington), head West on 179th Ave. for ½ mile, turn left onto 2nd Ave., then turn left again at Gate 7 (or Purple gate). Exposition and Equestrian Bldg. is on the right, at the end of the road. Feel free to park in any marked parking spot around the arena building. Please do not block any arena entrance or access road.

CLASS SCHEDULE:

Check in time will begin at 8:00am. The first class will start promptly at 10:00am on Friday, and 9:00 am on Saturday and Sunday.

MEASURING: All dogs without height cards will have to be measured by the Volunteer Measuring Official before you run. We will have a VMO available at this trial to measure each day near the trial secretary's table. We will be measuring throughout the day so if you're not entered in the first classes it's not necessary for you to arrive at 8am for measuring.

ALL FAST CLASSES WILL WALK TOGETHER AND RUN TOGETHER BY JUMP HEIGHT.

Walk through groups may be changed at the trial to accommodate for workers

PRELIMINARY RUNNING ORDER: The Preliminary Running Order is contingent on move-up entries not yet received.

Friday ~ Small to Tall	Ring 1 ~ Ken Boyd Start 10:00 am	Ring 2 ~ Jack Cadalso Start 10:30 am
NOTE 10:00AM Start Time	All FAST will run together by jump height Premier Standard Exc/Master Standard Open Standard Novice Standard	T2B Novice JWW Open JWW Exc/Master JWW Premier JWW
Excellent Standard and JWW Walk Thru	Exc Standard Walk/Run each group 4/8/12/16, 20/24/24C	Exc JWW Walk/Run each group 4/8/12/16, 20/24/24C

Saturday ~ Tall to Small	Ring 1 ~ Jack Cadalso Start 9:00 am	Ring 2 ~ Ken Boyd Start 9:30 am
NOTE 9:00AM Start Time	All FAST will run together by jump height Premier Standard Exc/Master Standard Open Standard Novice Standard	T2B Novice JWW Open JWW Exc/Master JWW Premier JWW
Excellent Standard and JWW Walk Thru	Exc Standard Walk/Run each group 24C/24/20, 16/12/8/4	Exc JWW Walk/Run each group 24C/24/20, 16/12/8/4

Sunday ~ Small to Tall	Ring 1 ~ Ken Boyd Start 9:00 am	Ring 2 ~ Jack Cadalso Start 9:30 am
NOTE 9:00AM Start Time	All FAST will run together by jump height Premier Standard Exc/Master Standard Open Standard Novice Standard	T2B Novice JWW Open JWW Exc/Master JWW Premier JWW
Excellent Standard and JWW Walk Thru	Exc Standard Walk/Run each group 4/8/12/16, 20/24/24C	Exc JWW Walk/Run each group 4/8/12/16, 20/24/24C

GENERAL: ALL dogs are required to be kept on leash at ALL times. And please pick up after your dogs.

VOLUNTEERS: We will be using the White Board system for workers. Please check the board and sign up to work when you can. Workers will receive raffle tickets to use for the worker raffle.

CONFLICTS: We will do our best to accommodate conflicts. If you have a conflict, put a "C" instead of a check mark on both gate sheets so the scribe and gate stewards will know you have a conflict.

MOVE-UPS: The deadline for move-ups is Monday, Nov 26, 2018 at 6 pm and must be submitted in writing (email ok). Day-to-Day move-ups will be permitted at these trials and must be submitted to the score table no later than 30 minutes after the end of the trial day.

FOOD: Sweet Al's will be there with his great Teriyaki menu.

VETERINARIAN: Columbia River Veterinary Specialists, 6607 NE 84th Street, Suite 109, Vancouver, WA 98665 (360) 694-3007 <http://columbiarivervet.com> Directions and maps are available from the trial secretary and will also be posted at the trial site.

HOSPITAL: Southwest Washington Medical Center is located at 3400 Main St., Vancouver, WA 98663 (360) 256-2000, open 24 hours a day. Directions and maps are available from the trial secretary and will also be posted at the trial site.

MACH, PACH OR PAX: If you think you'll be earning your MACH, PACH or PAX at this trial, we ask that you please come and remind someone at the Score Table prior to the run you think you'll earn it on. As we are often preoccupied with trial and scoring duties, we may be distracted and wouldn't want to miss celebrating your Championship with you. So again, please come and remind us or send someone to remind us and we'll be ready with a ribbon.

SUPER DOG COMPETITION: Don't forget about the Super Dog Competition! When you come to the Event Center, look for the table with the Super Dog display and pick up one of the Super Dog scoresheets available to everyone. Each event you enter garners you 1 point for entering and additional points based on how well your dog does in each event. Some events are scored and some are pass/fail. When you've complete any event, the steward for that event will stamp your score card and indicate the total score you received during that event.

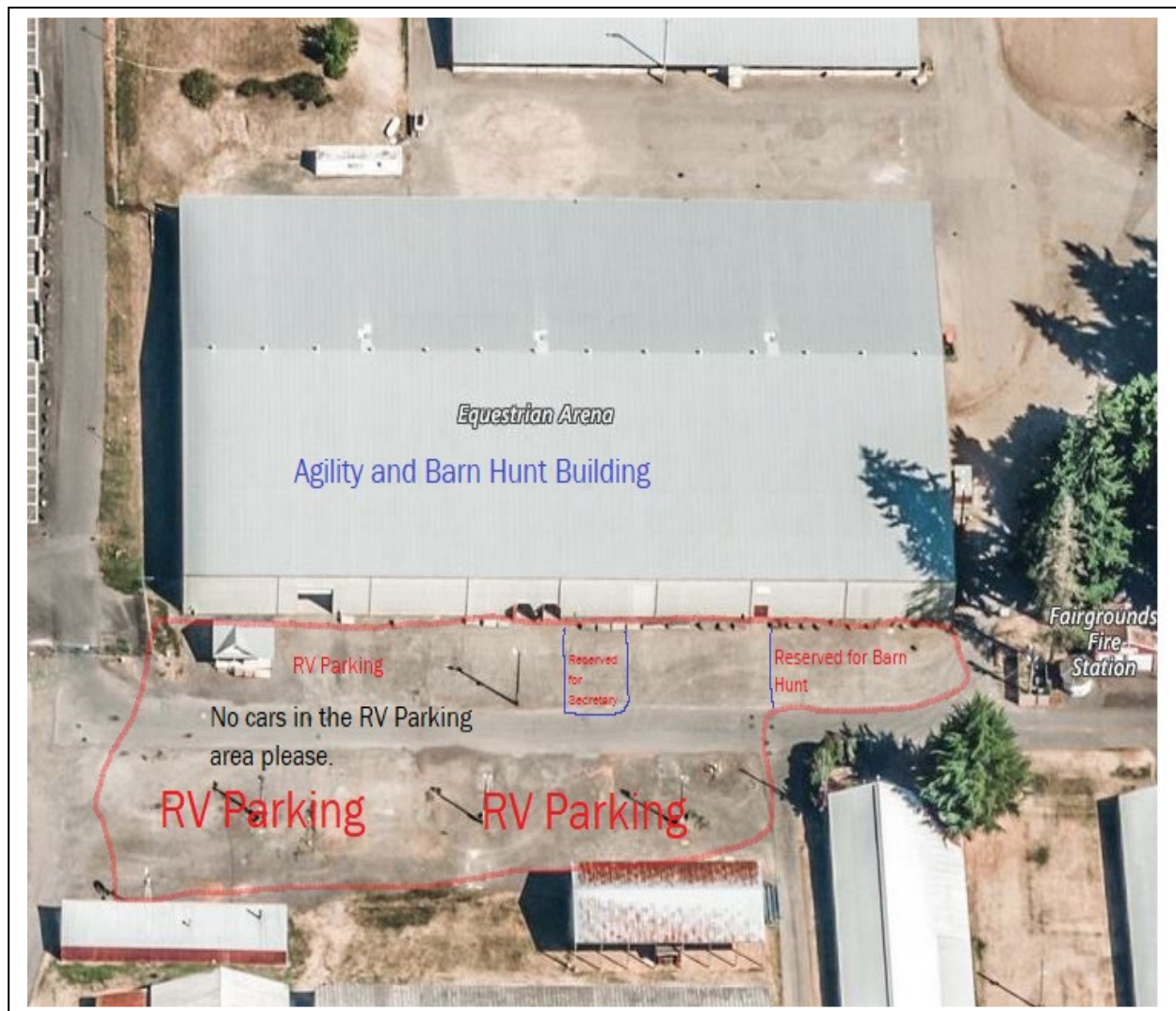
The Run Order, Worker's Schedule, Entry Statistics, Driving Directions and other information may be downloaded as it becomes available at www.k-9sports.com.

ON SITE CELL CONTACT: (503) 840-4303

See ya at the Start Line !!!

Lori Sage
Trial Secretary

RV PARKING INFORMATION



Please note the Reserved RV Locations on the map above. RV Parking is on a First Come, First Served basis. However, if you park in the two areas that are marked off as reserved, we will ask you to move. You can arrive after Noon on Thursday, Nov 29, 2018. Make sure to come find me to get your Hang Tag. It must be displayed in your vehicle at all times.