

**Immanuel Lutheran Church**  
**556 East Second Street**  
**Jamestown NY 14701**

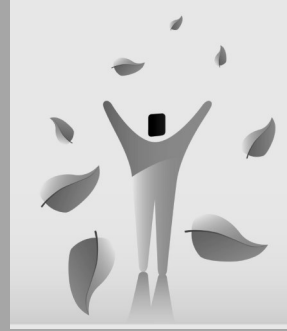


NON-PROFIT ORG.  
US POSTAGE  
**PAID**  
Permit No. 438  
Jamestown, NY

**ADDRESS SERVICE REQUESTED**

MAILING  
LABEL

# LEAVES OF LIFE



*Immanuel Lutheran*

*556 East Second St*

*Jamestown NY 14701*

*(716) 664-7104*



*Holy Trinity Lutheran*

*825 Forest Ave*

*Jamestown NY 14701*

*(716) 488-4235*



**Tree of Life Lutheran Community**

**WINTER ISSUE**  
**Dec. 2014- Jan. 2015**



## **Just the beginning**

As John the Baptist prepared the way for Jesus, he baptized people and urged them to turn their lives around and live for God. As powerful as this ritual was, John was clear that Jesus' baptism would be more so: "I baptize you with water, but he will baptize you with the Holy Spirit" (Mark 1:8, NIV).

The story is told of a gruff old man who'd resisted baptism all his life. Finally, he told his pastor he was ready to be baptized, according to the church's custom, that Christmas. After breaking the ice off the surface of the local pond, the minister plunged the man, face first, into the frigid water three times "in the name of the Father, the Son and the Holy Spirit." As the man emerged the third time, he exclaimed, "Thank God that's over!" "Oh, no," replied the pastor. "Baptism is just the beginning."

# Tree of Life Lutheran Community

## SUNDAY MORNING SCHEDULE

Holy Trinity branch



Immanuel Branch

### WORSHIP SCHEDULE thru December

**NOVEMBER 30** Hanging of the Greens Service, 1st Sun. of Advent  
Service w/HC at Holy Trinity @ 9:15am (no SS)  
Service w/HC at Immanuel @ 10:45am (no SS)

**DECEMBER 7** Joint Service w/HC at Holy Trinity@9:15am  
Tree of Life Sunday School will present a Christmas program at the combined service at Holy Trinity. During the Sunday School hour the kids will be making Christmas cards for the shut-ins from both congregations., Congregational meeting following service

**DECEMBER 14** Service w/HC at Holy Trinity @ 9:15am (no SS)  
Service w/HC at Immanuel @ 10:45am (no SS)

**DECEMBER 21** Combined at ILC: SS, 9:30; W, 10:45 Choral Cantata

**DECEMBER 24** Christmas Eve Services: 4:30pm @ Holy Trinity  
10:00pm @ ILC, Special Music; Service at 10:30pm

**DECEMBER 28** Joint Service of Lessons & Carols at Holy Trinity @ 9:15am; no Sunday School

**Note: WORSHIP SCHEDULE MAY CHANGE IN JANUARY, WATCH BULLETIN & WEBPAGE FOR DETAILS.**



**Note: IF YOU WOULD LIKE NAME REMOVED FROM OUR MAILING LIST, PLEASE LET THE CHURCH OFFICE KNOW.**

ILC: 716 664-7104/ [ilc@windstream.net](mailto:ilc@windstream.net)

HT: 716 488-4235/ [secretary.ht@gmail.com](mailto:secretary.ht@gmail.com)

# Tree of Life News

IMMANUEL AND HOLY TRINITY LUTHERAN BRANCHES

## IMMANUEL STAFF & CONTACTS

A congregation of the Evangelical Lutheran Church in America

Pastor Bob Kasting	664-7104 (640-1580)
Church Office	664-7104
Rosemary DiDomenico, Parish Secretary	
Beryl Emley, Financial Manager	
Roberto Castellano, Custodian	
Diane K. Kling, Organist; Choir	484-0266
Wolf-Dieter Krahn, Council President	U/L
Ian Eastman, Shared Lutheran Youth Minister (SLYM)	720-8584

Nursery room is available if some feels the need to leave with small child

Church office hours: mornings, Monday—Friday

Pastor in office: Monday & Wednesday mornings

Website: [www.ilcjamestown.com](http://www.ilcjamestown.com)

**PASTOR BOB:** [revbobb2001@yahoo.com](mailto:revbobb2001@yahoo.com)

**ROSEMARY/office:** [ilc@windstream.net](mailto:ilc@windstream.net)

**BERYL:** [berylemley@windstream.net](mailto:berylemley@windstream.net)

**IAN:** [ifeastman@gmail.com](mailto:ifeastman@gmail.com)

**DIANE:** [dkling@netsync.net](mailto:dkling@netsync.net)

## HOLY TRINITY STAFF & CONTACTS

• Pastor Bob Kasting	640-1580	<a href="mailto:revbobb2001@yahoo.com">revbobb2001@yahoo.com</a>
• Gail Espinoza, Organist	488-0422	
• Judy Whittaker, Secretary	488-4235	office hrs 9am-3pm T-F <a href="mailto:secretary.ht@gmail.com">secretary.ht@gmail.com</a>
• Marsha Donner, Financial Secretary	664-1847	
• Stephanie Thompson, Custodian		
• Janette Coleson, Bookkeeper		<a href="mailto:bookkeeper.ht@gmail.com">bookkeeper.ht@gmail.com</a>

Office Hours: Tuesday thru Friday 9am-3pm

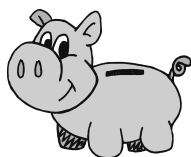
# Tree of Life News

IMMANUEL AND HOLY TRINITY LUTHERAN BRANCHES



Holy Trinity distributes visitation cards once a month after Sunday service. These cards have a name and contact information on them. These are people from, or friends of, our congregation that have not been able to get out and worship with us. Or they may be someone that could just use a visit from a caring member. Please consider taking one or more of these cards and making time to go on a visit. One of our members has reported that she had such a great time visiting one of our folks that she wants to continue the visits more frequently. She has made a new friend!

No experience necessary! We only ask that you return the card to the office at some point in the month so we are aware of who has received visits. We would also find it helpful if you could write a short note on the card about the visit or anything you think we should be made aware of for the next time. Return cards to John Taylor or in the secretary's box or desk in the office.



The Tree of Life Sunday School has decided to see how many pigs they can buy by the end of the Sunday School year for the ELCA Good Gifts promotion. Each baby pig costs \$30. We have our own piggy bank to hold the collections. Any help will be appreciated.

TREE OF LIFE LUTHERAN COMMUNITY

# Tree of Life Councils

## *Holy Trinity's Church Council* **Alive in Christ! – Sharing the Joy!**

John Taylor, President	488-1430
Steve Muscarella, Vice President	483-2656
Dorie Deyo, Treasurer	763-0588
Darcy Whitney, Secretary	664-2771
Ashley Muscarella	969-7071
Norm Owen	487-1849
Eileen Hitchcock	664-2560
Paula Hogfren	488-1388
Dennis Palermo	483-8111
Sandra Stewart	484-5535
Richard Seaholm	

## Immanuel Council

### Terms Expiring 2014

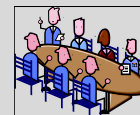
Judy Lind  
Wolf-Dieter Krahn

### Terms Expiring 2015

Carol Sorg  
Lisa Gustafson  
Rob Lind

### Terms Expiring 2016

Jan Bechmann  
Paul Hagelin



### Officers

President: Wolf-Dieter K  
Vice President: Rob L  
Secretary: TBA  
Treasurer: Carol S

## 2014 AUDITORS:

Kim Hagelin  
Gary Swanson

### Team chairs:

Property team:	Paul H
Worship & Music:	Lisa G
Outreach:	Jan B
Hospitality:	Carol S
CE, Family and Youth:	Judy L
Personnel:	Wolf-Dieter K
Stewardship:	tba
Finance:	Rob L

### 2014 NOMINATING COMMITTEE

David Eaker  
Kristie Maloney  
1 more TBA

### JNP REPRESENTATIVES

Pat Sandberg  
Deb Morlock  
DaleAnn Krahn

## Dear friends ...



Do you like to shop for Christmas gifts or do you dread even starting the shopping and going into the store? Do you enjoy the methodical process of se-



lecting the perfect gift for someone on your list or do you just pick the closest item at hand?

By the time you have read this, I will be, (maybe) one of the millions of people who go up on Friday, yes Black Friday and had gone shopping. It is a day that is notorious for frenzied shoppers, looking for the great bargains, usually in the wee early hours of the day. Have you ever been out for the black Friday shopping spree?

I started asking the kids in mid-November what they wanted Santa to bring them so I could start making my list to help Santa. Plus I get the enjoyment; yes I know I am weird, of going out and shopping on Black Friday. For me it has become a tradition in the household that we go shopping on Friday AM to get some really great bargains. I know some of you go out on that Friday, because I have seen some of you. I comb through the ads on Thursday to find the best deals and to check other ads to get matching discounts if possible. I grumble when the alarm goes off at 4 but I will persevere. Walking through the doors of the

Samaritan leaders. You love because Christ first loved us. (I John 4:19). You go and make people real by taking notice, including, asking questions and listening to life stories. You make people real by making sure they do not get ignored in the crowd. You make people real when you stand up for those who are put down by others. You make people real by affirming their unique gifts and talents. You are with people who are experiencing the great joys and great frustrations of life. Go, get out of here, go make people real. Go, do what Jesus did.

Come to our upcoming Youth Ministry Meetings to connect more with Jesus and learn more about people ministry.

Sincerely, Ian Eastman, Youth Ministry Coordinator

### Youth Nights

**Sunday, December 7 & 21, 5:30 pm - 7:00 pm**

First Lutheran Church, 120 Chandler St.

No judgement here, just a place to join God in the care and love of everyone.

### Special event: 6th Annual Jingle & Mingle

**Tuesday, December 23, 6:00 pm - 10:00 pm, Wal-Mart, then Applebees**

We're bellringing to raise funds for Salvation Army Winter Relief efforts. At 9pm, we'll head over to Applebees to celebrate. Dress warm, bring an instrument if you play one, and bring money for snacks! A great way to end the year with fun, food, and ministry!

CONFERENCE YOUTH MEETING is set for Dec. 6 from 9am - 10:30 am at First Lutheran. We'll be discussing upcoming events, including the National Youth Gathering.

YOUTHQUAKE Jan. 23 - 25 Pittsburgh, PA

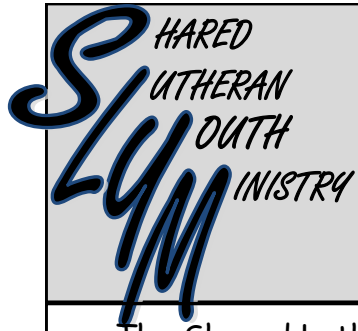
Youthquake is a transformational weekend with deep Lutheran roots for grades 6-12. The event is very well organized with worship, concerts, small groups, and recreational times. Youth love this event and always come away growing in faith. Cost of the weekend is \$159 (due Dec. 14), plus money for several meals and optional souvenirs. We are in need of several adult chaperones/drivers to make this weekend happen. More details can be found at:

<http://www.youthencounter.org/event/pittsburgh/>

Ian F. Eastman, M.A.—Conference Deacon  
Southwest Conference Youth Coordinator  
Shared Lutheran Youth Ministry Coordinator

716-720-8584

[ifeastman@gmail.com](mailto:ifeastman@gmail.com)



**Youth Ministry Contact:**

**Ian Eastman, M.A.**

**716-720-8584**

**Email: ifeastman@gmail.com**

**Web: [younglutherans.blogspot.com](http://younglutherans.blogspot.com)**

The Shared Lutheran Youth Ministry has some exciting opportunities coming up this month for youth to serve, worship, and have some fun together.

Check out the SLYM Facebook Page or [www.younglutherans.blogspot.com](http://www.younglutherans.blogspot.com) for details.

The Shared Lutheran Youth Ministry provides faith formation, fun and ministry opportunities for youth in grades 5-12. It is a

cooperative effort of Bethel, First Lutheran, Holy Trinity and

Immanuel Lutheran Churches.

Dear young person,

We want you to leave the church!

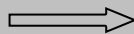
That's right. Go! Get out of here! (I can't believe I just wrote that!)

But here is why, "Out of here" is where people are. Our youth ministry is people ministry. Our youth ministry is about our youth learning to care, to welcome and to affirm people every day, everywhere and in every relationship. That is why our church needs you on the sports teams, in the plays, in choir, on dance line and working in the community. The reality is that you are the church, "Out there."

Jesus has left the building! Jesus made people real by being with people, caring for people wherever he was. Jesus picked people out of the crowd and cared, welcomed and affirmed them. He seemed to hang out with all the wrong people - the lame, blind, forgotten, pushed out; Jesus makes people real, not by waiting for people to come to youth group. Jesus goes and lives in the midst of people.

Our youth ministry is a place where we learn the art of people ministry. When we gather, we support, equip and help you with your ministry, your friends, the people you interact with every day. We have fun. When people like you come, no matter what we do, you always make it fun. We also talk, pray, worship. We help you to help others.

You do what Jesus does. You leave the building to be Good



FROM THE PASTOR CONTINUED

first store by 4:30 with cash in hand to begin my shopping. Off I go looking for those great deals that I found in the ads, and as I shop I try to bring good cheer to others who look perplexed and sleep deprived as myself. I offer kind words of encouragement to the employees who seem to get attacked with ferocity by the other stealth shoppers seeking the best buys also, and yes I wish everyone a very Merry Christmas.

I know as you are reading this you are thinking, "*Pastor Bob, you are nuts!*" Yep you are right, but I love it. I love selecting the gifts for the kids and my family and friends. I love the anticipating faces and reactions on Christmas morning. The gifts that I purchased on Friday are usually the most special, because their tags always reflect the true giver.

Mary and Joseph anticipated the birth of Christ. Elizabeth's baby jumped in her womb when Mary visited Elizabeth's home and she exclaimed in a LOUD voice "*Blesses are you among women and blessed is the child you will bear.*" Angels triumphantly announced the birth of Christ to the shepherds. The Magi followed a star for a very long time (willingly) and offered gifts to this precious child, and a king-a man of power and great wealth feared him.

Do you triumphantly announce the birth of Christ? Do you leap with joy at the greatest gift you will ever receive? Do you proclaim God's love loudly? Do you give thanks to God for HIS peace, HIS Hope, HIS Joy, HIS Love? Do you share these gifts with others?

Merry Christmas,

*Pastor Bob*

TREE OF LIFE LUTHERAN COMMUNITY—IMMANUEL & HOLY TRINITY



# Tree of Life News

IMMANUEL AND HOLY TRINITY LUTHERAN BRANCHES

## HOLIDAY KORV DINNER

Saturday ★ December 6th

Three Settings: 4:30 - 5:30 - 6:30

Tree of Life Lutheran Community Parish  
invites YOU to a



"Delicious Holiday Dinner"

Homemade Korv  
Homemade Rye Bread  
Homemade Pies

plus all the trimmings  
(inc. a bottomless cup of coffee)

COST

Adults \$10.00 Children: \$5.00

(Meatball Dinner available in lieu of Korv)

LOCATION: IMMANUEL LUTHERAN CHURCH

556 EAST SECOND STREET - JAMESTOWN, NEW YORK

Tickets will be on sale each Sunday in November 9th, 16th, 23rd, & 30th  
at both Immanuel and Holy Trinity Lutheran Churches

OR

You can also see or call Al Johnson for tickets 488-1555 or 640-1087  
or Holy Trinity Lutheran Church 488-4235 (Tue - Fri 9 A.M. to 3 P.M.)  
Dennis Bechmann 664-2733

( Ticket Sale cut-off 12/2 )

FUNDS FROM THE DINNER WILL BE USED FOR PARISH YOUTH ACTIVITIES

Get your tickets early! You don't want to miss this fantastic dinner!  
Invite your friends to share in this fellowship experience.

POSTER COURTESY OF SANDBERG KESSLER ARCHITECTURE, PC

TREE OF LIFE LUTHERAN COMMUNITY



ORDER YOUR  
Poinsettias

If you would like to order a poinsettia for the Chancel for the Christmas season, please complete this form. Payment (\$7.00 per plant) should accompany your order. Plants will be displayed Dec 14thru Dec 28 this year Your plant(s) will be delivered to a homebound member unless indicated below. Orders blanks will be in the Narthex.

Orders may be mailed to the church office or placed in the offering plate, using one of the general purpose envelopes found in the pew racks. **Deadline for placing orders is Wednesday, Dec. 3rd**

Given by \_\_\_\_\_

Number of poinsettias \_\_\_\_\_ Amount enclosed \$ \_\_\_\_\_

Information for acknowledgement in bulletin:

In memory of: \_\_\_\_\_

\_\_\_\_\_  
\_\_\_\_\_  
\_\_\_\_\_

In honor of: \_\_\_\_\_

\_\_\_\_\_  
\_\_\_\_\_

\_\_ I wish to take my plant following the worship service on the Sunday after Christmas

Immanuel



## Born king of the Jews

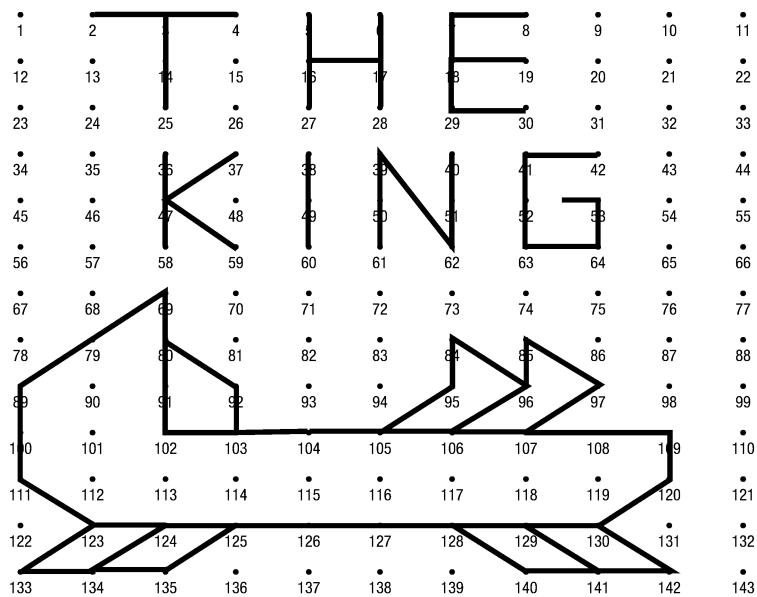
Matthew 2:1-2 says that after Jesus was born, wise men came to Jerusalem and asked, "Where is the one who has been born king of the Jews?" Complete the puzzle to discover what they found in Bethlehem.

*Directions: In the grid below, draw lines by starting at the first number in each list and stopping at the last.*



☆ ☆ ☆ ☆ ☆ ☆ ☆ ☆ ☆ ☆ ☆ ☆ ☆ ☆ ☆ ☆ ☆ ☆ ☆ ☆

16-17	28-17-6	61-50-39	8-7-18	106-96-85-97-107-106	42-41-52-63-64-53
3-14-25	36-47-58	104-105-106	38-49-60	89-100-111-123	107-108-109-120-130
2-3-4	5-16-27	19-18-29-30	69-79-89	80-92-103-104	125-135-134-124-123-133-134
40-51-62-39	37-47-59	105-95-84-96		124-125-126-127-128	69-80-91-102-103
				129-130-142-141-129	141-140-128-129



# Tree of Life News

IMMANUEL AND HOLY TRINITY LUTHERAN BRANCHES



**Dec. 7--Tree of Life Sunday School** will present a Christmas program at the combined service at Holy Trinity. During the Sunday School hour the kids will be making Christmas cards for the shut-ins from both congregations.

This year the kids are collecting money to see how many pigs they can buy for the ELCA Good Gifts project. Each baby pig cost \$30. So far they have collected \$21.35. The congregations are welcome to help with this project.



Don't forget to bring in hats, scarves and gloves for the mitten tree. They are donated locally.

**CONGREGATIONAL MEETING  
DECEMBER 7  
AFTER THE JOINT SERVICE AT Holy Trinity**

**{All at ILC}**

LIVE & LEARN ENGLISH—M-F: 8:30am (Sept-June)

ESL—M & W 12:30pm (Sept-June)

HEALTHY BONES: M-W-F 9-10am

NA—M (7); TH (7); SAT {11AM}

USUALLY LAST SUNDAY, NA Area Leaders, noon

Women <sup>of the</sup> **ELCA**

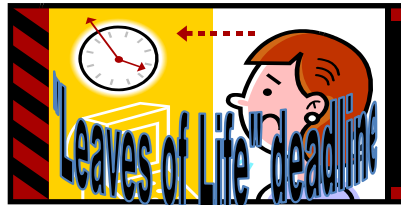
DON'T FORGET  
WELCA FALL BRUNCH  
AT THE ROSCH CENTER  
SAT. DECEMBER 6

TREE OF LIFE LUTHERAN COMMUNITY

# Tree of Life News

IMMANUEL AND HOLY TRINITY LUTHERAN BRANCHES

Feb. "Leaves of Life" DEADLINE  
Is Sun. Jan 18, 2015  
Mailing for ILC: Mon Jan 26  
& HT: Tues Jan 27



## Immanuel ..Jamestown.. Report for October 2014

Note: totals are rounded off

<u>account</u>	<u>Beg. bal.</u>	<u>Receipts</u>	<u>disbursements</u>	<u>End bal.</u>
Expansion	764	1,688	1,936	516
General	17,632	9,300	10,332	16,599
Memorial	55,151	20	0	55,171
<b>total</b>	<b><u>\$73,548</u></b>	<b><u>\$11,008</u></b>	<b><u>\$12,269</u></b>	<b><u>\$72,287</u></b>

## HOLY TRINITY OPERATING FUND REPORT FOR OCTOBER

Operating Fund report	OCTOBER 2014	Yr. to date Actual	Yr. to date Budget
Income	\$8,090	\$101,209	\$109,917
Expense	\$7,816	\$115,369	\$107,152
Balance	\$273	- \$14,160	\$2,764

Here is one congregation's great mission story. If your congregation does something special to spread Christmas joy, share the story.

## Operation Christmas In Hayward, Wis., more than 800 will receive Lutheran cheer



Nearly 20 percent of Hayward's population lives below the poverty line — second highest in the state for those of all ages living in poverty. Tourism jobs are seasonal and the climate can be difficult.

[First Lutheran Church](#), Hayward, has for 41 years been making a difference for neighbors at Christmastime. First began Operation Christmas in 1973 to provide a small group of residents anonymous food baskets, which included coloring books, crayons and puzzles for children. The Salvation Army pitched in with vouchers for turkey or ham. Members donate generous gifts of food and money. A restaurant provides pies and a famous candy shop puts a pound of fudge in each basket. Hats, mittens, gloves and socks for all family members are added, as well as wrapped presents for nearly 400 children.

In the last two years, First formed a partnership with two other churches in town. Operation Christmas spent \$4,500 (all of it donated) to purchase gifts and enough food for a week for each family.

"The congregation has always been led by the Spirit to serve God within our broader community," said a member. She believes Hayward's Operation Christmas could be a model for what other congregations and communities could do. "The outreach of this congregation is nothing short of phenomenal," she said.

We are church together for the sake of the world. God's Work. Our Hands. - *Marcia Brown, Mission Interpreter*

Mission Message

TREE OF LIFE LUTHERAN COMMUNITY



## ELCA LECTIONARY B

### Sunday December 7 - Second Sunday of Advent

Isaiah 40:1-11 Psalm 85:1-2, 8-13 (13) 2 Peter 3:8-15a Mark 1:1-8

### Sunday December 14 - Third Sunday of Advent

Isaiah 61:1-4, 8-11 Psalm 126 (3) or Luke 1:46b-55 (52)  
1 Thessalonians 5:16-24 John 1:6-8, 19-28



### Sunday December 21 — Fourth Sunday of Advent

2 Samuel 7:1-11, 16 Luke 1:46b-55 (52) or Psalm 89:1-4, 19-26 (1)  
Romans 16:25-27 Luke 1:26-38

### Sunday December 28 — First Sunday of Christmas

Isaiah 61:10-62:3 Psalm 148 (13) Galatians 4:4-7 Luke 2:22-40

### Sunday January 4 - Epiphany of Our Lord Readings

Isaiah 60:1-6  
Psalm 72:1-7, 10-14 (11) Ephesians 3:1-12

### Sunday January 11 Baptism of Our Lord

Genesis 1:1-5 Psalm 29 (3) Acts 19:1-7 Mark 1:4-11

### Sunday January 18 — Second Sunday After Epiphany

1 Samuel 3:1-10 [11-20] Psalm 139:1-6, 13-18 (1) 1 Corinthians 6:12-20  
John 1:43-51

### Sunday January 25 - Third Sunday after Epiphany

Jonah 3:1-5, 10 Psalm 62:5-12 (6) 1 Corinthians 7:29-31 Mark 1:14-20

## HOSPITALIZATIONS

The church office no longer receives calls from the hospital when a member is hospitalized. It would be appreciated if someone from the family would call the church office when a hospitalization occurs. In addition to calls no longer being made to the office by hospital volunteers, the computer used by the clergy at the hospital to locate hospitalized members has been removed. Thank you for your assistance.

The second Sunday of the month Immanuel will continue to be Food collection and will benefit Holy Trinity's food pantry. Any food will be welcome.



TREE OF LIFE LUTHERAN COMMUNITY

# Tree of Life News

IMMANUEL AND HOLY TRINITY LUTHERAN BRANCHES

## Please note:

If your memorial is not listed, it will be in next issue

### IN MEM, OF Emel Peterson

Priscilla Dubois  
Carol Sorg  
Allen & Phyllis Johnson

### IN MEM. OF Richard Bland

Peggy Schnars

### IN MEM, OF Emel Peterson

Bruce & Donna Johnson  
Pr Chuck & Esther Gustafson

### IN MEM, OF Marshall Munson

Gordon Wheeler  
Jack Wheeler  
Dale Wheeler  
Oran Donner  
Paul & Marsha Donner

## Average Sunday

### ILC 80

Joint Service -128

### HT 69

Joint Service 145

ILC MEMORIALS

HT MEMORIALS

## ST. LUCIA FEST



*The Scandinavian Heritage Foundation will be presenting their annual Lucia Fest on*

*Sun., Dec. 14 - 2 pm - Holy Trinity.*

*Everyone is welcome to attend.*

*There is no charge, but a freewill donation will be accepted.*

## LABOR OF LOVE

*Will start meeting weekly in January 5, 9-12, At Holy Trinity. All ladies are welcome, no sewing skills are necessary!*

## ESTHER CIRCLE & RACHEL CIRCLE

### ESTHER CIRCLE

MEETS THE FIRST WEDNESDAY OF THE MONTH - DEC. 3 AT 1:30PM AT HOLY TRINITY LIBRARY

### RACHEL CIRCLE

MEETS THE THIRD THURSDAY OF THE MONTH—DEC 18 1:30pm In HOLY TRINITY LIBRARY

TREE OF LIFE LUTHERAN COMMUNITY

# Tree of Life News

IMMANUEL AND HOLY TRINITY LUTHERAN BRANCHES

## A Note from the Financial Manager at Immanuel

I'd like to remind you that all contributions for **2014** must be in the church office by December 31st or mailed to the church with a postmark of December 31 or before. Any contributions received after December 31st will be counted as **2015** contributions.

You may contribute money in December toward **2014's** pledge in order to get the additional deduction on your **2014** taxes. **Just be sure to mark it clearly that the contribution is being pre-paid for 2015** and have it in the church office by December 31st.

May God surround you with joy and peace this holiday season. And may you be abundantly blessed in your faith journey in the year ahead!

-Beryl Emley

p.s.

***A special thanks to all who have sent in their pledge cards for the upcoming year.***

## FOR HOLY TRINITY MEMBERS ONLY

**The Financial managers would like to remind the congregation**

That all contributions for 2014 must be in the church office by December 30TH or mailed to the church with a postmark of December 30 or before.

**Due to several requests at Immanuel,** we will offer wafers at Communion as well as bread. If you prefer a wafer, please let the server know. Gluten-free wafers are also available.



TREE OF LIFE LUTHERAN COMMUNITY

- 9) Try to include at least one item you'd choose as a treat for your kids. Someone else's kids will love You.
- 10) **CONSIDER DONATING CASH**; large organizations can get much better deals on food than you can. With \$10, Feeding America feedingamerica.org) can provide 90 meals to hungry people.

Of course, the important thing is to do what you can. Giving food to hungry people is awesome and I love you for it no matter what you donate. (unless it's candied fruit cake).

## FOOD CUPBOARD UPDATES

**FOOD CUPBOARD:** currently has need of canned items— fruit, vegetables, stew, chili, soups and egg noodles to help with the cold weather approaching. They also are collecting scarves, hats and mittens. Please no boots, shoes or jackets though.

- HT food cupboard served a total of 1,359 meals and helped 151 people in the month of October 2014
- Our year to date totals are about 11,259 meals served and a little over 1,000 people helped. We expect an increase in households needing food assistance since the SNAP benefits were cut last month.
- The Holy Trinity Food Cupboard is an agency of the Food Bank of Western NY and we diligently comply with all regulations, reporting and food ordering.

*We thank the congregations for their support and donations throughout this past year*



BUT THE ANGEL SAID TO THEM,  
"DO NOT BE AFRAID.  
I BRING YOU GOOD NEWS  
THAT WILL CAUSE GREAT JOY  
FOR ALL THE PEOPLE.

LUKE 2:10, NIV

What greater proof could God have given of his mercy than by taking upon himself that which needed mercy? Where is there such fullness of loving-kindness as in the fact that the Word of God became perishable like the grass for our sakes?

Let man infer from [Christmas] how much God cares for him. The humanity of God shows the greatness of his kindness.

—Bernard of Clairvaux (1090-1153)

## ARTICLE FROM HOLY TRINITY FOOD CUPBOARD.....

**GIVING IS GREAT. GIVING SMART IS BETTER**

ARTICLE REPRINTED FROM READERS DIGEST; NOV 2014 EDITION

Originally from XOJane.com (December 11, 2013) Author Deb Martinson

Traditionally those of us who give to food banks will clean out our cabinets and drop off the rejects. As a formerly homeless person, I'd like to ask you to try something different this year. Give like a hungry person. If all your meals for the next week were coming from a donation box, what would you put in there? Here a few suggestions...

- 1) **DONE GIVE OUTLANDISH THINGS.** I once received a tub of candied fruit cake from a food bank. Some food is just to horrible to wish on anyone else; throw it out.
- 2) **DO GIVE NO COOK FOODS;** When I was homeless I didn't carry my microwave around. Others have a hard time cooking if their landlord wont fix the broken stove of it the power company shut off their electricity. So give granola bars, spam, tuna, peanut butter, dry milk, anything you would take on a long hike.
- 3) **LEAVE FOOD IN THEIR ORIGINAL PACKAGING.** If It needs to be portioned out, volunteers at the food bank will take care of it.
- 4) **THINK SIMPLE;** A boxed cake that says just add water is better than one that requires milk, eggs and vegetable and whatever lese. Instant coffee is great, ground coffee less so. Also good are multi taskers—Bisquick rocks.
- 5) **LABEL SPECIAL DIETARY NEEDS;** people with food allergies or celiac disease often cant find donated food they can eat. If you donate gluten free milk— mark it in large print. Do the same for allergen free items. Clear labelling helps get the right food to the right clients.
- 6) **MAKE IT EASY TO OPEN;** Aseptic— or sterile— packaging and pouches are better than pull top cans, which are better than traditional cans. It sucks even more than usual to be hungry if you've got a perfectly good can of food and no way to open it. And avoid glass jars, they break too easily.
- 7) **ASK WHAT'S NEEDED;** The food bank may want non-food items, like soap, toilet paper, tampons, diapers, pet food because they can't be purchased with food stamps. I never would have guessed the food bank near my house needs plastic bags.
- 8) **CHECK YOUR GROCERY STORE;** many stores work with local food pantries to assemble bags of food you can buy and donate for five or ten bucks. It's an easy way to give.
- 1) **BE NICE;** I still remember how finding cookies in my bag could make me happy all day. When you're poor, small things take on more significance

CONTINUED IN NEXT PAGE

# Immanuel special days - Dec. & Jan.

NEWS FROM TREE OF LIFE IMMANUEL LUTHERAN CHURCH

## DECEMBER birthdays

2nd -Steve Sandberg  
4th -Chris Ahlstrom  
5th -Eleanor Ahlstrom  
6th -Norma Anderson  
8th -Joanne Burling  
10th -Glenn Wigren  
-Lee Bennett  
11th -Noah Micciche  
14th -Kelly Glotz  
15th -Judy Lind  
18th -Tyler Maloney  
21st -Alice Carlson  
-Nichole Ridgway  
-Shannon Ligon  
25th -Gayle Lyon  
-Bonnie Magers  
26th -Carl Olson  
30<sup>th</sup> -Jazelle Churnac



## JANUARY birthdays

5th -Karrie Swanson  
8th -Marilyn Isaacson  
10th -Roberta Graham  
12th -Kristien Olson  
-Brendan Scott Devereaux  
13th -Jennifer Wolnik  
15th -Connor Hamby  
-Bella Soto  
16th -Marian Leathers  
18th -Garth Swanson  
19th -Taylor Bennett  
20th -Janis A. Nelson  
22nd -Kenneth Fairbanks  
25th -Phyllis Johnson  
-Charles Moss  
-Cole Main  
28th -Kristin Maloney  
30th -Norma Carr  
31st -Aaron Olson

## DECEMBER anniversaries

12/02/2000 -Paul & Kim Hagelin  
12/09/2005 -Jonathan & Bonita Mazzone  
12/16/1961 -Jack & Judy Anderson  
12/18/1965 -Tom & Sue Priester  
12/22/1973 -Jim & Pam Caccamise



NOTE: IF ANYONE SEES A BIRTHDAY OR ANNIVERSARY ON LIST THAT SHOULD NO LONGER BE INCLUDED FOR ANY REASON, PLEASE LET THE CHURCH OFFICE KNOW!

# God's Blessings to you!

TREE OF LIFE LUTHERAN COMMUNITY—IMMANUEL

# HT Birthdays

## December

## January

2	Patricia Raffa	1	Darcy Whitney
4	David Shagla	2	Marilyn Tane
5	Jeff Raines	3	Linda Scalise
7	Mandy Brink	3	Kristen Bentley
9	Cody Keifer	4	Evan Larson
	Dallas Ortel	5	Gail Espinoza
	Jane Sellstrom	6	Krista Camarata
10	Richard Saullo, Jr.		Camryn Storms
2	Nicholas Ingrao	8	Michael Mogenhan
	Hunter Gruber	9	Judy Anderson
	David Nelson	11	Cory Saullo
14	Emily Whitney	12	Matt Kubinski
	Abigail Doverspike	13	Dennie Swan-Scott
17	Ann Mogenhan	15	Marci Erickson
	Rick Bowman		Halley Shagla
18	Holly Weston	17	Rebecca Swanson
	Karen Melquist		Mary Ann Ingrao
19	Matthew Barton	19	Sara Goff
	Dawn Brink	20	Ella Dale
20	Scott Anderson	22	Adam Carlson
	Katie Johnson		Elizabeth Christensen
	Amber Woodruff		Madison Ventura
21	Scott Christensen		
22	Letha Adelman	25	Dylan Agett
	Gina Wakefield	26	Loretta Lukach
23	Gloria Genberg	29	Sylvia Braley
25	Sherry Doverspike	31	Melissa Radack Storms
24	Carolyn Edson		
27	Thomas Shortlidge		
28	Elissa Kimmel		
29	Collin Bentley		



TREE OF LIFE LUTHERAN COMMUNITY—HOLY TRINITY

## In the Mail...

Dear Holy Trinity Lutheran Church,  
The World is becoming a better place— thanks to you. Your recent gift of \$77.00 to the ELCA Malaria Campaign is helping to change the lives in 13 countries in Africa. Thank You.

As the Evangelical Lutheran Church in America (ELCA), we do more together than we ever could do alone. We are a church that believes God is calling us into the world— together. Thank you for your faithful support.

*Jessica Nipp Hacker*  
Coordinator,  
ELCA Malaria Campaign

**PEOPLE ON THE MOVE...**  
NEW ADDRESS;  
Paul and Pat Hopkins  
524 Cockatoo Blvd. Lake  
Wales, FL 33859



*For the grace of  
God has appeared,  
bringing salvation  
for all people.*

Titus 2:11, ESV



Make this special plate as a gift to give this Christmas.

### What you need:

- Clear glass plate
- Acrylic craft paint
- Paintbrush and water
- Black permanent marker

### What you do:

1. Turn plate upside-down on table. Paint one of your palms brown, and press it on the center of the plate.
2. Rotate the plate so fingers point down. Using yellow paint, make a straw bed in the palm.
3. Mix white and brown paint for Jesus' face. Use white paint for a swaddled body.
4. Paint a yellow star above Jesus and a yellow border around the plate rim.
5. When paint is dry, turn plate over. With the marker, draw dots for Jesus' eyes and write the words of Luke 2:12 around the plate rim.



# Tree of Life News

IMMANUEL AND HOLY TRINITY LUTHERAN BRANCHES

## CALLING OUR SNOWBIRDS!

Please make sure the church office has your alternate address and date you are leaving town.

You may call the church offices\_

HT: 488-4235, ILC: 664-7104 or email:

HT: [secretary.ht@gmail.com](mailto:secretary.ht@gmail.com) ILC [ilc@windstream.net](mailto:ilc@windstream.net) Thank You!!



A total of \$565 was collected at October for the Blanket and Tools of Hope Campaign. Holy Trinity thanks you for your generosity!

## Salvation Army Red Kettle Drive 2014

Members of Tree of Life will again this year be assisting the Salvation Army with the Christmas Red Kettle Drive.

**Immanuel's day is Monday, Dec. 8 at TOPS**

**Market on Washington St. from 10am-9pm.**

**Holy Trinity's Day is Thursday, Dec. 11 at Chautauqua Mall 10am-9m**

Sign up sheet at churches.



TREE OF LIFE LUTHERAN COMMUNITY

*ALL ABOARD!*  
**POLAR EXPRESS**  
**MOVIE IS COMING**  
**TO**



**HOLY TRINITY; ANDERSON HALL**  
**SAT. DEC. 13 AT 6:30 PM**

*AND IT'S BRINGING PIZZA TOO!*

## Our Sympathy to...

\* Pastor Becca Ehrlich from Zion Frewsburg and conference deacon, Will Platnick whose infant son, Gideon Lucas Ehrlich-Platnick, died at birth Thursday, October 30, 2014 at WCA Hospital in Jamestown

\*The family of Emel Peterson. He was the owner & operator of Peterson's Candies, with his wife Elsie from 1931-76. He served with the U.S. Army from 1942-45 in Normandy, northern France and the Rhineland. Emel was awarded the Purple Heart for his bravery and also earned the American Service Medal, European-African-Middle Eastern Service Medal and the Good Conduct Medal.



Emel  
Peterson  
6/19/1911  
10/23/2014





## SAVE THE DATE: (It's *right* after New Years)

### Senior High Winter Retreat

### January 2-4, 2015

Come enjoy a weekend of faith, friends, and fun while we explore what it means to be a maturing Christian young person.

#### The Winter Retreat will also include:

- \*Powerful worships and devotions
- \*Reconnecting with old camp friends and making new ones
- \*Campfires
- \*Camp Games and activities
- \*Sledding and fun in the snow

**WHEN:** 7:00 PM Friday through 11:00 AM Sunday

**WHERE:** The Retreat Center at LCLC

**COST:** \$90 (Includes meals, lodging, and program)  
 \$25 of which is a non-refundable deposit  
 The registration deadline is 12/29/14.



call 716-386-4125 for more information or you can access registration form from LCLC's website.

## REMINDER for HOLY TRINITY

### Attention: team leaders, organizations, staff..

Annual Reports are due in the office by Sunday, January 5th  
 Emailed reports in Word format are greatly appreciated  
 Please email them to me at [secretary.ht@gmail.com](mailto:secretary.ht@gmail.com) or drop them off ready to print .

REPORTS WILL BE AVAILABLE TO THE CONGREGATION IN MID JANUARY. THE ANNUAL MEETING FOR ELECTION & BUDGET & 2014 REPORTS WILL BE SUNDAY, FEBRUARY 1ST FOLLOWING WORSHIP

#### The following reports are needed to complete the ANNUAL REPORT .....

Pastor	Council President	Women of the ELCA
Property Committee report		Christian Ed Committee
Memorial Committee		Food Cupboard
SLYM		
Social Ministries: Prayer list, Card Ministry, Transportation Ministry		
Finance		Worship & Music
Home Communion /Visitation Committee		
Treasurer's Report		Auditors
2015 /Proposed/ Approved Budget		

#### COUNCIL COMMITTEE REPRESENTATIVES HT

Personnel Committee	Sandra Stewart
Visitation Committee	Paula Hofgren,

#### COMMITTEES

Worship Committee	Gail Espinoza,Ashley Muscarella HT Diane Kling, Lisa Gustafson, ILC
Vision Team	Merle Nollinger , Michael White ,Sandy Forsberg –HT Steve Sandberg Tom Priester ,Karen Okerlund –ILC
Fellowship	Dennis Palermo ,Norm Owen, Dianne Dillingham, Dodie Erickson-HT, Carol Sorg & Deb Morlock– ILC
Christian Ed	Sandy Stewart, Marcy Palermo, John Taylor

# Annual Reports Due

## ILC

**Attention:**

**team leaders,**

**organizations,**

**staff..**

Annual Reports are due in the office by **Fri. January 2, 2015**

Emailed reports in Word format are greatly appreciated

Please email them to me at [ilc@windstream.net](mailto:ilc@windstream.net) or drop them off ready to print .. Thanks

REPORTS WILL BE AVAILABLE ON SUNDAY, January 18th

The Annual Meeting for Election & Budget & **2014** Reports will be Sunday, **January 25, 2015**

Immediately following worship

# Immanuel

The following reports are needed to complete the

ANNUAL REPORT

Pastor

Council President

Secretary/Adm. Ass't

Organist/Choir Director

Children's Worship

Report of Bishop

Christian Nurture

Finance

Hospitality

Outreach

Property

Stewardship

Worship & Music

Personnel

Tree of Life Social Group

Senior Men

Home Communion/Prayer Chain

SLYM

Treasurer's Report/ Fund Activity/ Mortgage

Auditors

**2015** Proposed/ Approved Budget

## These forms are available in Narthex

### CHRISTMAS COOKIE FUNDRAISER ORDER FORM: DUE BY SUNDAY, DECEMBER 14<sup>TH</sup>, 2014

This year's Christmas Cookie Fundraiser will split the donations to the Honduras Little Angels- HOPE FOR HONDURAS foundation and the Honduras Promise Children's Project. This will provide some needed supplies to help the NICU staff care for and save the lives of many premature and at risk infants. Many of our Promise Children families have contracted Dengue Fever and need medical care, mosquito nets, and medications.

Each delicious and beautifully wrapped plate of 2 dozen Christmas Cookies will be available for pick-up at St. Timothy Lutheran, 3748 Rt. 430, Bemus Point, NY, 14712 on Saturday, December 20th from 9am to 12 noon, and Sunday morning, December 21.

Each plate will have an assortment of 4 of the following 6 cookies:

Pepparkakor: Swedish ginger spice cookie

Spritz: Traditional Swedish sugar cookie

No-Bake Crunchy cookie: a favorite with chocolate, oats, walnuts, coconut and peanut butter

Sugar Cookie: decorated in many shapes and colors

Pecan balls: wonderfully delicious and moist

Peanut Butter Blossoms: with a Hershey's Kiss in the middle ☺

Please use the order form below and return to St. Timothy Lutheran Church or Sarah Goebel, PO Box 39, Bemus Point, NY 14712.

PLEASE MAKE CHECKS PAYABLE TO: ST.TIMOTHY LUTHERAN CHURCH, WITH NOTATION:

"Honduras Missions - cookies.

Suggested Donation is \$12.00 per gift plate of cookies.

Please call Sarah Goebel with any questions at 716-450-2986, or email at [goebel.sarah3@gmail.com](mailto:goebel.sarah3@gmail.com)

NAME: \_\_\_\_\_

ADDRESS: \_\_\_\_\_

PHONE: \_\_\_\_\_ No. of plates: \_\_\_\_\_ X \$12.00= \_\_\_\_\_

Please make CHECKS PAYABLE to: ST TIMOTHY LUTHERAN, WITH NOTE: HONDURAS MISSIONS – COOKIES.PICK-UP AT ST. TIMOTHY LUTHERAN CHURCH, BEMUS PT. RT. 430 – SAT. DEC. 20<sup>TH</sup>, 9AM-12NOON

Thank you and may God Bless you and yours this Christmas Season!

# December 2014

Sun	Mon	Tue	Wed	Thu	Fri	Sat
	1 HT office CLOSED 9AM LOL HT	2 9am HT volunteers 10am—ILC WM Knit Grp, lib Bishop visit 6, Lutheran	3 9am—SR MEN, ILC 10-2 Food Cupboard, HT Bib.Stdy 11 HT 1:30 Esther Circle, HT 7—ILC Choir	4 Korv prep ILC	5 Korv prep ILC 10-2 Food Cupboard, HT	6 Conference Youth mtg, 9am @ First WELCA Brunch <b>Korv Dinner</b>
7 <b>Combined</b> <b>AT HT:</b> 9:15 W; Cong. Mtg w/vote 10:45 Kids movie/crafts SLYM@1st 5:30	8 <b>HT office</b> CLOSED ILC Bell Ringers 10-9 @TOPS Wash. St.  6pm—Min.Teams & Comb. councils At HT lib	9 9am HT volunteers 6pm St Lucia practice HT	10 10-2 Food Cupboard, HT Bib.Stdy 11 HT  7pm—ILC Choir	11 HT Bell Ring- ers 10-9 @ Chaut. Mall	12 10-2 Food Cupboard, HT	13 8-5 Vendor Show HT 6:30 movie HT
14 <b>AT HT:</b> 9:15 W 10:45 SS <b>LUCIA PROG 2</b> <b>AT ILC:</b> Food Sun. 9:30 SS; 10:45 W/HC	15 HT office CLOSED	16 9am HT volunteers	17 9am—SR MEN, ILC 10-2 Food Cupboard, HT 7pm—ILC Choir	18 1:30 Rachel Circle, HT	19 10-2 Food Cupboard, HT	20
21 <b>Combined</b> <b>AT ILC:</b> 9:30 SS; 10:45 W /HC Cantata  SLYM@1ST 5:30	22 HT office CLOSED	23 9am HT volunteers  SLYM— 6p- 10p Jingle & Mingle Walmart & Applebee's	24 CLOSED  CHRISTMAS EVE SERVICE: HT: 4:30 ILC: 10:30 W/ SP MUSIC START- ING AT 10	25 CLOSED  CHRISTMAS DAY	26 10-2 Food Cupboard, HT	27
28 <b>Combined</b> <b>AT HT:</b> 9:15 W Lessons & Carols	29 HT office CLOSED  <b>Pastor vacation</b>	30 9am HT volunteers	31 Closed NEW YR EVE ILC hall in use 9p-1a NA Dance			

# January 2015

Sun	Mon	Tue	Wed	Thu	Fri	Sat
Beginning in Jan. Wor- ship sched- ule might change .. Watch in bulletins & website				1 NEW YEARS DAY  CLOSED	2 DEADLINE FOR ILC ANNUAL REPORTS 10-2 Food CupboardHT	3
				<b>Pastor vacation</b>		
4 <b>Comb. @</b> <b>HT; Guest P</b> <b>- Pr Dan R</b> <b>W 9:15</b> <b>SS 10:45</b>	5 HT office CLOSED <b>9AM LOL HT</b>	6 9am HT volunteers 10am—ILC WM Knit Grp, lib Fellowship Comm.7 HT	7 .9am—SR MEN, ILC 10-2 Food Cupb. HT 1:30 Esther Circle, HT 7pm—ILC Choir	8	9 10-2 Food Cupboard, HT	10
	<b>Pastor vacation</b>					
11 <b>AT HT:</b> 9:15 W; <b>AT</b> <b>ILC:</b> Food Sun. 10:45 W/HC Chr,Nurture m	12 <b>HT office</b> CLOSED <b>9AM LOL HT</b> HT Council, 6:30 at ILC <b>ILC</b> 6pm—	13 9am HT volunteers	14 10-2 Food Cupboard, HT  7pm—ILC Choir	15 1:30 Rachel Circle, HT  Y Cancer Support Grp ILC H Lib, 6-8	16 10-2 Food Cupboard, HT	17
n/l deadline 18 combined <b>AT ILC:</b> 9:30 SS; 10:45 W/HC (Ann. Re- ports will be available)	19 CLOSED Martin Luther King, Jr	20 9am HT volunteers	21 9am—SR MEN, ILC 10-2 Food Cupboard, HT 7pm—ILC Choir	22	23 10-2 Food Cupboard, HT  <b>YOUTHQUAKE</b> <b>Pittsburgh PA</b>	24
25 <b>AT HT:</b> 9:15 W <b>AT ILC:</b> 10:45 W/HC	26 9:30—N/L Volunteers ILC  HT office CLOSED <b>9AM LOL HT</b>	27 9am HT volunteers 9am HT N/L <b>WORK PAR-</b> <b>TY</b>	28 10-2 Food Cupboard, HT 7pm—ILC Choir	29	30 10-2 Food Cupboard, HT	31

