

METAL

RECTIFIED

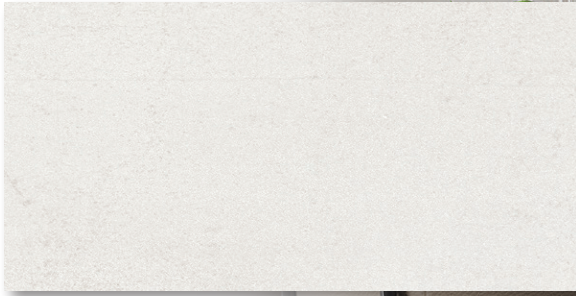
H.D.I.T.
HI-DEFINITION
INKJET TECHNOLOGY



FIELD TILE



Silver



White



Shown: Silver 16x32 on Floor & White 16x32 on Wall

SPECIFICATIONS

Application	Floor
Visual	Metallic
Type	H.D.I.T. Rectified Porcelain
Slip Resistant	No
PEI Rating	4
Frost Resistant	Yes
Shade Variation	Slight/Medium
Screens/Faces	19



V2



Made in Spain

SIZES



16x32



3x32 Bullnose

Note: Manufacturer does not recommend installing large format rectangular tile using a 50% staggered brick/running bond grout joint pattern. Joint locations can be random and should be positioned to be no less than 30% the length of the adjacent tile. Alternating joints so they are <30%, a straight-lay or herringbone patterns are acceptable and with grout joint sizes of 1/4" to 3/16" but no less than 1/8".