

## CYPERACEAE – SEDGE FAMILY

**Plant:** annual or more commonly perennial

**Stem:** stem (solid) is termed a culm, simple, mostly erect, often angled (mostly triangular) but some round or angled; some with rhizomes or stolons

**Root:** fibrous

**Leaves:** mostly linear, alternate, parallel veins, often in 3 ranks (vertical rows), leaf sheath usually closed, leaf blade flat, folded, round or absent; a ligule is often present

**Flowers:** small, 2-ranked or spiraled on a spike stalk in 1 or more spikelets in simple to complex inflorescences, each flower in axil of a scale, the inflorescence itself may be subtended by a leaf-like and sometimes showy bracts; perianth usually represented by 1-6 bristles, scales or are absent; perfect or imperfect (monoecious); 3 (1-6) stamens; 1 pistil, 1 style, ovary superior, 2-3 carpels, 1-chambered ovary

**Fruit:** achene (lens-shaped to triangular in cross-section, achene enclosed in a sac – perigynium in the Carex genus)

**Other:** often occurring in bogs, swamps, or meadows along streams, but also in dry areas and forests; Monocotyledons Group

**Genera:** 100+ genera; locally many genera

2 slides per species

## CYPERACEAE – GENUS RHYNCHOSPORA (A-Z)

**Brown Beak Sedge [Rush]; *Rhynchospora capitellata* (Michx.) Vahl**

**Shortbristle Horned Beaksedge; *Rhynchospora corniculata* (Lam.) A. Gray**

**Globe [Globe-Fruited] Beak Sedge; *Rhynchospora globularis* (Chapm.) Small**

**Sandswamp Whitetop [Whitetop Sedge]; *Rhynchospora latifolia* (Baldw. ex Ell.) Thomas**

# Brown Beak Sedge [Rush] p1

*Rhynchospora capitellata* (Michx.) Vahl

Cyperaceae (Sedge Family)

Near Heber Springs, Cleburne County, Arkansas

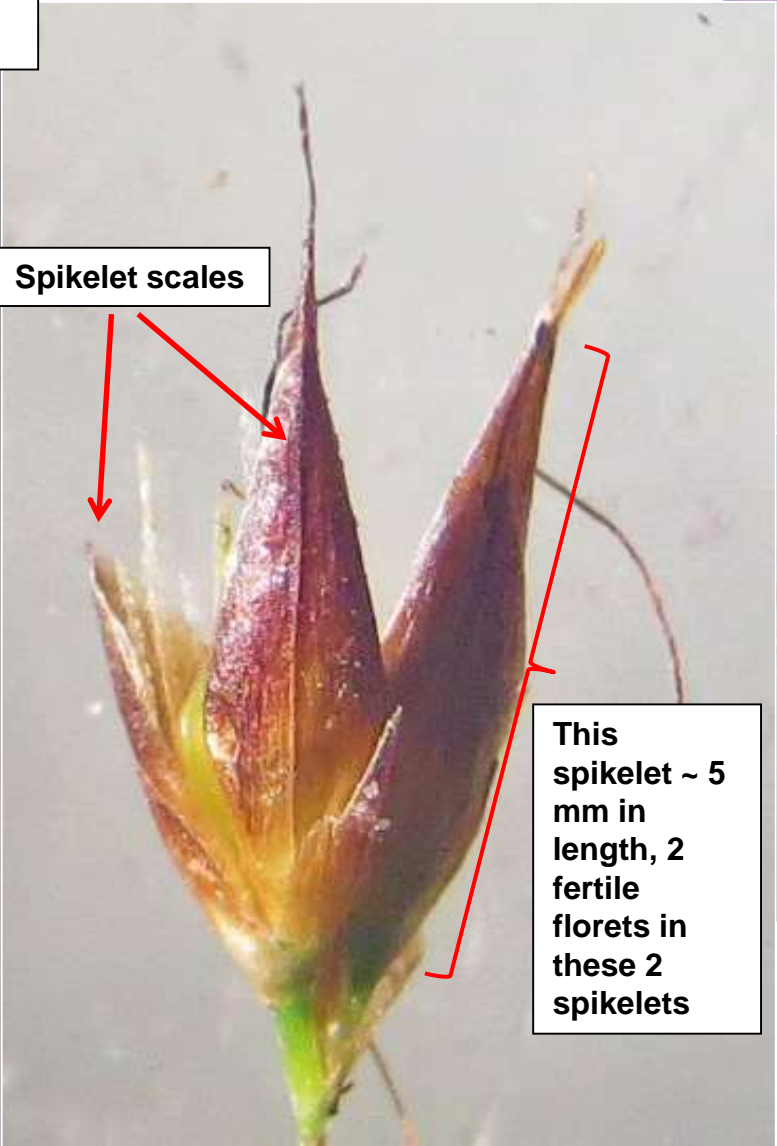
Notes: tall plant, height to 100+ cm; culm triangular, smooth; roots fibrous, perennial; leaves flat, up to 3+ mm wide and 70 cm in length; inflorescence composed of clusters of spikes, both terminal and in axils; spikes composed of spikelets to 5+ mm, each spikelet may contain 1 to 2 (up to 5) fertile florets to 3-4 mm, usually 2 or 3 fruits per floret - see photos on p2; usually in damp habitats; late spring to fall

[V Max Brown, 2014]



**Brown Beak Sedge [Rush] p2**  
*Rhynchospora capitellata* (Michx.) Vahl  
[V Max Brown, 2014]

Fruit smooth, ellipsoidal to ovoid with narrow raised margins, tubercle narrow triangular, 6 retrorsely (downward) barbed bristles reaching to top of tubercle



Clusters of spikelets



# Shortbristle Horned Beaksedge - p1

*Rhynchospora corniculata* (Lam.) A. Gray

Cyperaceae (Sedge Family)

Mingo Swamp Area, Stoddard County, Missouri

Notes: tall plant, height to 200+ cm; culm roughly triangular, smooth, often with rhizomes, perennial; roots fibrous; leaves flat or folded, up to 20 mm wide and 100 cm in length; inflorescence composed of clusters or corymbs of spikelets, both terminal and in axils; 1 to several fertile florets per spikelet - see photos on p2 for details; usually in marshes, swamps and muddy habitats; summer to fall

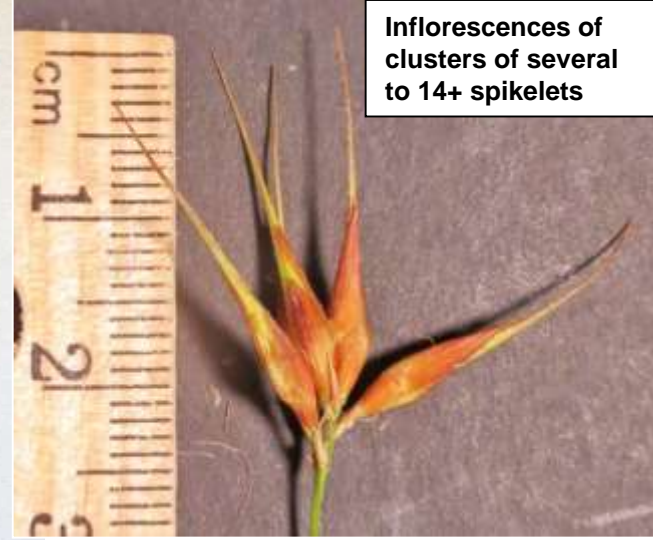
[V Max Brown, 2015]



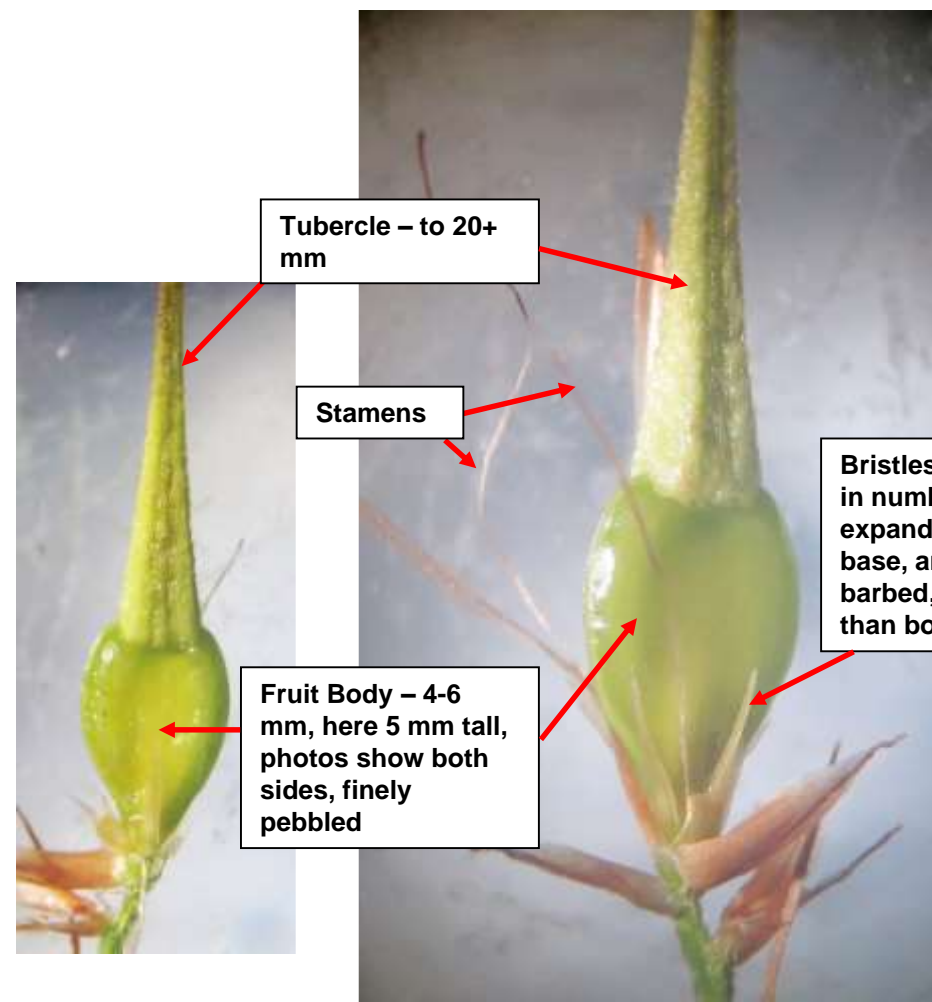
Leaf width up to 20 mm, here about 12 mm

# Shortbristle Horned Beaksedge - p2

*Rhynchospora corniculata* (Lam.) A. Gray [V Max Brown, 2015]



Inflorescences of clusters of several to 14+ spikelets



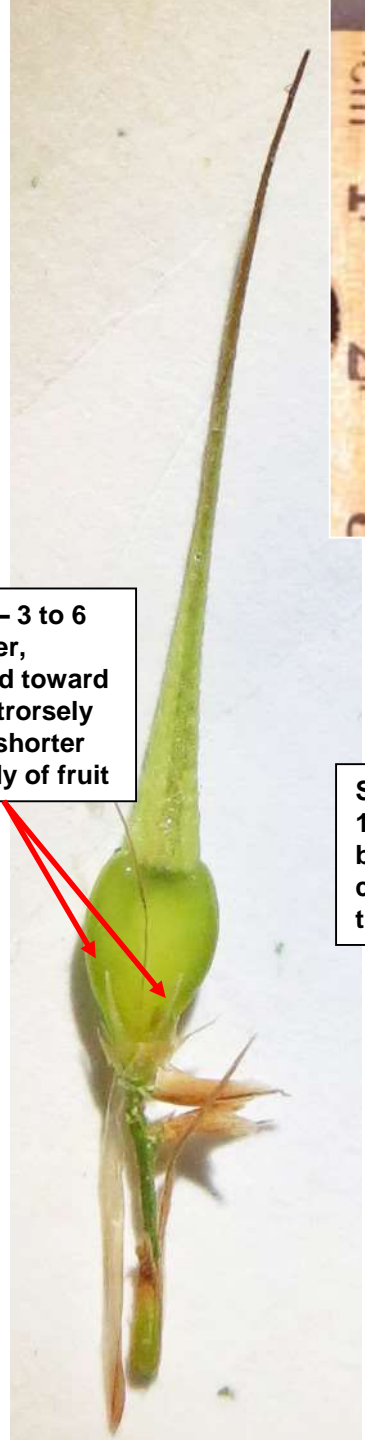
Tubercle – to 20+ mm

Stamens

Fruit Body – 4-6 mm, here 5 mm tall, photos show both sides, finely pebbled

Bristles – 3 to 6 in number, expanded toward base, antrorsely barbed, shorter than body of fruit

Fruit body with very long tubercle, bristles shorter than length of fruit body



Scales – to 13+ mm, brown in color, acute tip, raised rib



# Globe [Globe-Fruited] Beak Sedge - p1



*Rhynchospora globularis* (Chapm.) Small  
Cyperaceae (Sedge Family)

Near Bolivar, Polk County, Missouri

Notes: perennial, caespitose or not, up to 80+ cm; culm triangular, smooth, no rhizomes; roots fibrous, leaves flat, up to 3+ mm wide and 70 cm in length; inflorescence composed of clusters of spikes, both terminal and in axils; spikes composed of spikelets to 4+ mm, each spikelet may contain 1 to 3 fertile florets - see photos on p2; usually in damp habitats or in upland areas; late spring to fall (three varieties are listed in FNA - this is probably variety *globularis* due to transverse rugose pattern on tubercle and bristles only halfway up the body; summer to fall

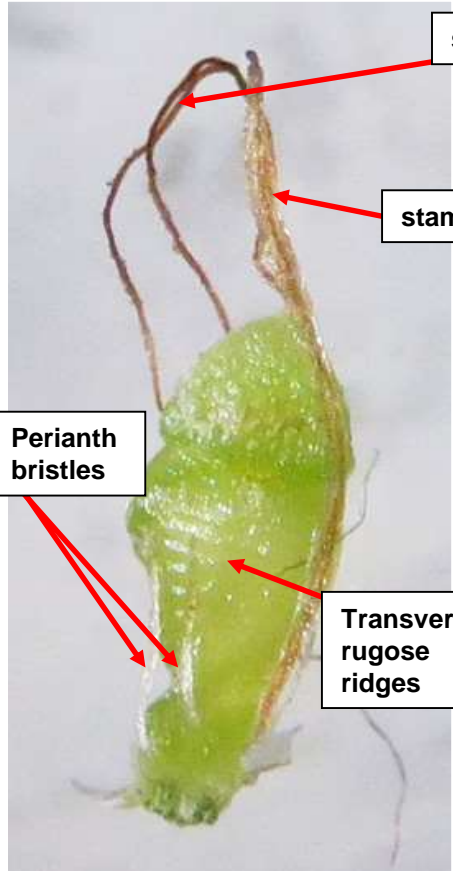
[V Max Brown, 2015]



# Globe [Globe-Fruited] Beak Sedge - p2

*Rhynchospora globularis* (Chapm.) Small

[V Max Brown, 2015]



styles

stamen

Perianth bristles

Transverse rugose ridges

Mature achene – body with horizontal ridges or wrinkles with fine vertical lines



Achene – here body is 1.2 mm tall (can be up to 1.5 mm), tubercle here 0.5 mm tall (up to 0.6 mm), body is usually more obovate to ovoid than shown (immature specimen here), has horizontal ridges (rugose), 2 styles, perianth bristles up to about half way up the body of the fruit, barbs point upward

Inflorescence - clusters on branches



Several spikelets with 1 to 3 florets, note scale has short awn



Achene within scales





# Sandswamp Whitetop

## [Whitetop Sedge]

*Rhynchospora latifolia* (Baldw.  
ex Ell.) Thomas

Cyperaceae (Sedge Family)

Tybee Island, Georgia

Notes: 7-10 white-top bracts at the top of this  
plant ID it (Star-Rush has less); plant 30-70 cm in  
height; a southern and costal sedge

[V Max Brown, 2006]



Under Revision

