

BRIARWOOD

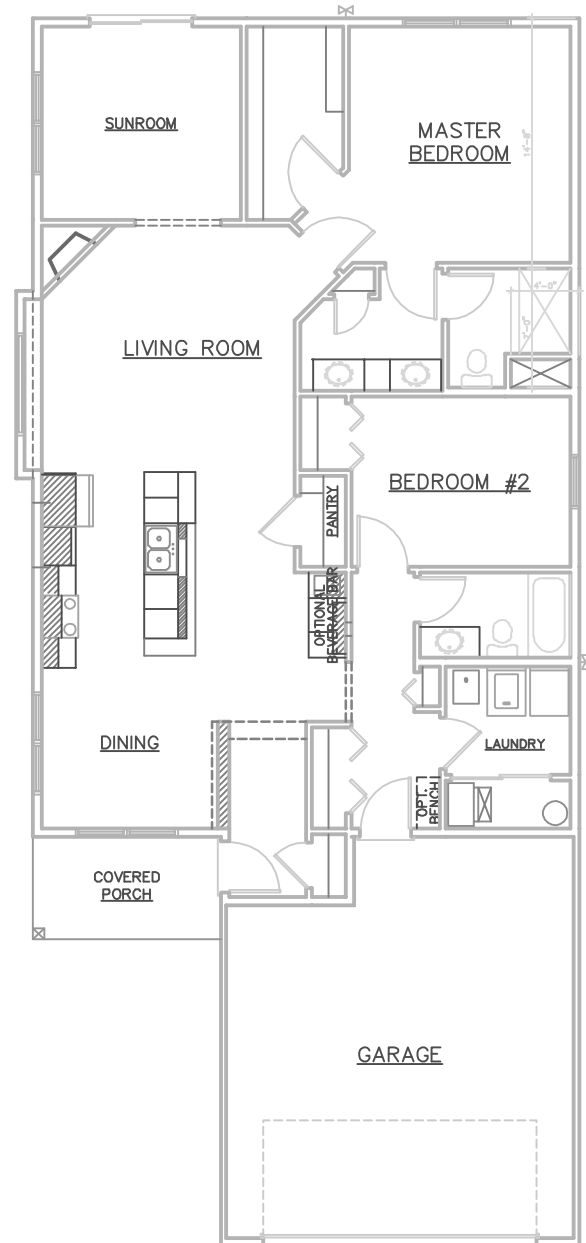
3564 RIVERWOOD DRIVE



ROOM SIZES

MASTER BEDROOM	13' X 13'-4"
BEDROOM #2	11'-4" X 10'-6"
LIVING ROOM	15' X 14'-4"
DINING	14' X 10'
KITCHEN	14' X 10'-6"
SUNROOM	9'-6" X 11'-8"

- * 2 BEDROOMS, 2 BATHROOMS
- * 1,567 SQUARE FEET
- * OPEN FLOOR PLAN
- * WALK-IN CLOSET
- * COVERED FRONT PORCH
- * SUNROOM



3475 Vermillion Street, Suite 101 ~ Hastings, MN 55033 ~ 651.437.3700 ~ www.gregjhomes.com

Plans and specifications are subject to change without notice. Copyright Greg J Homes of Hastings Inc. 2025