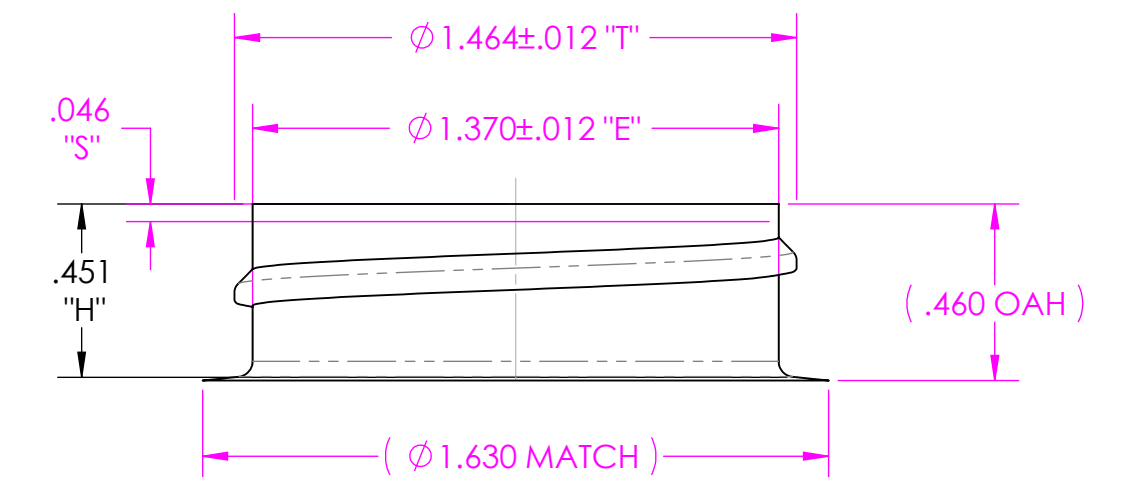
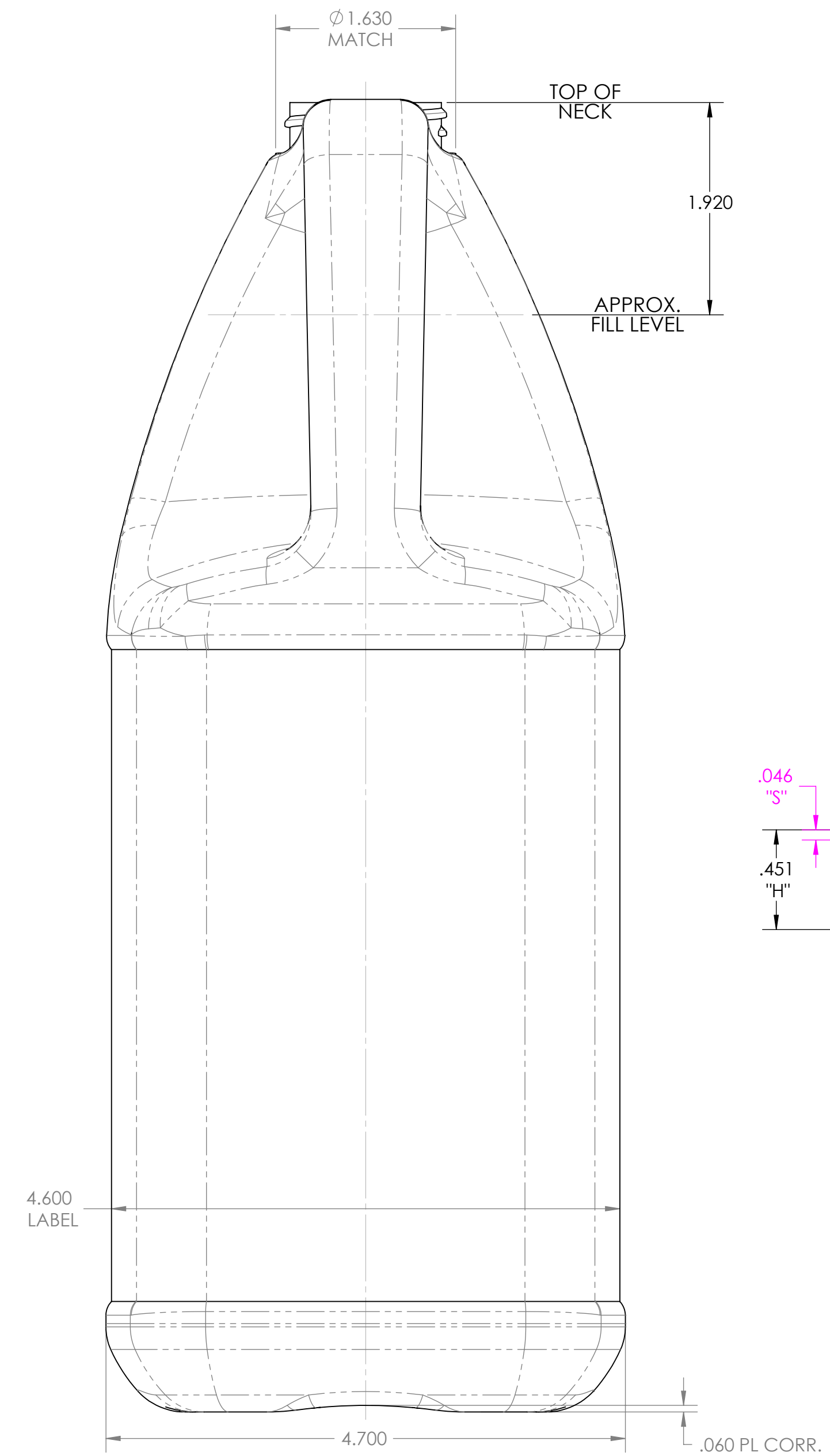
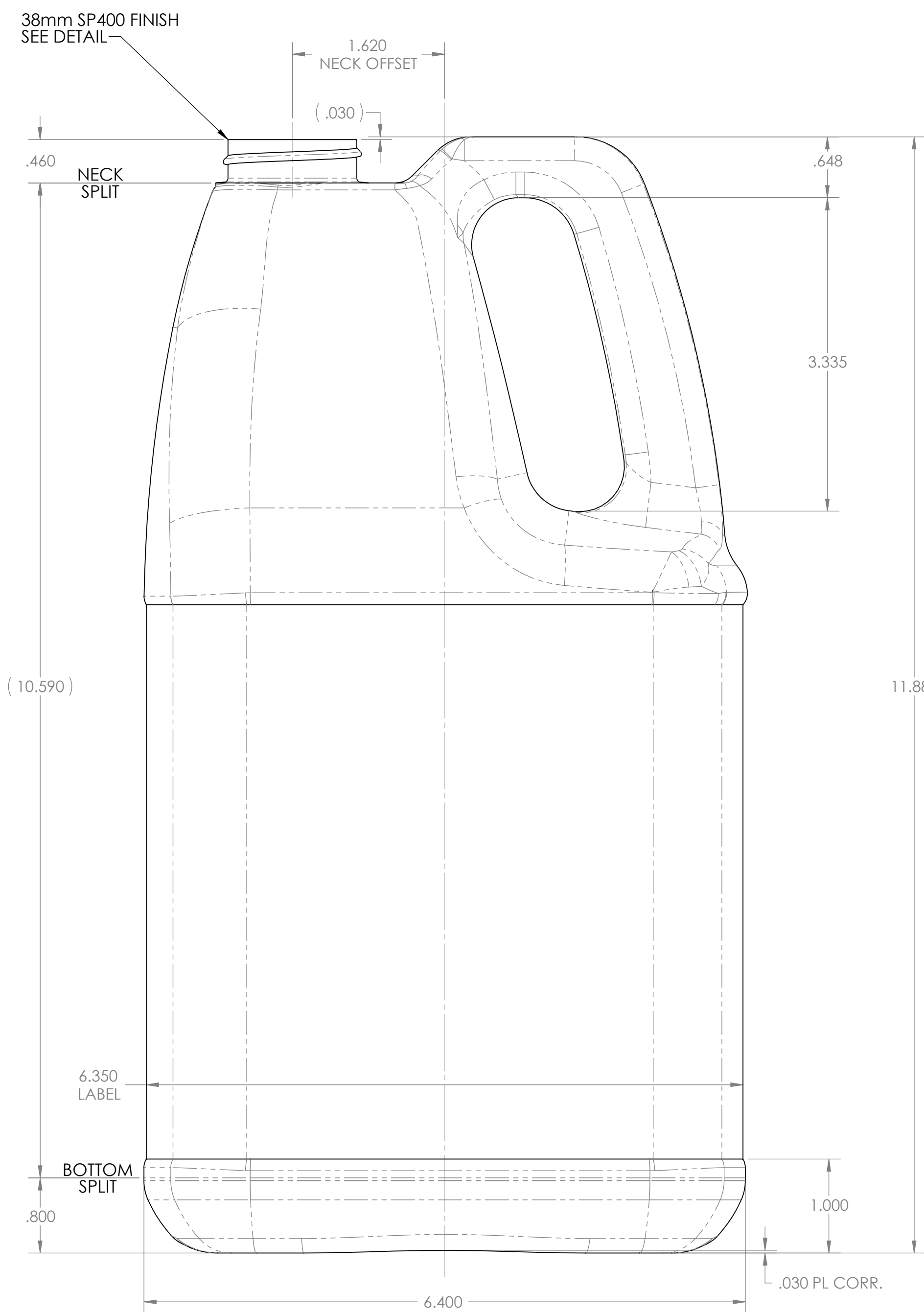
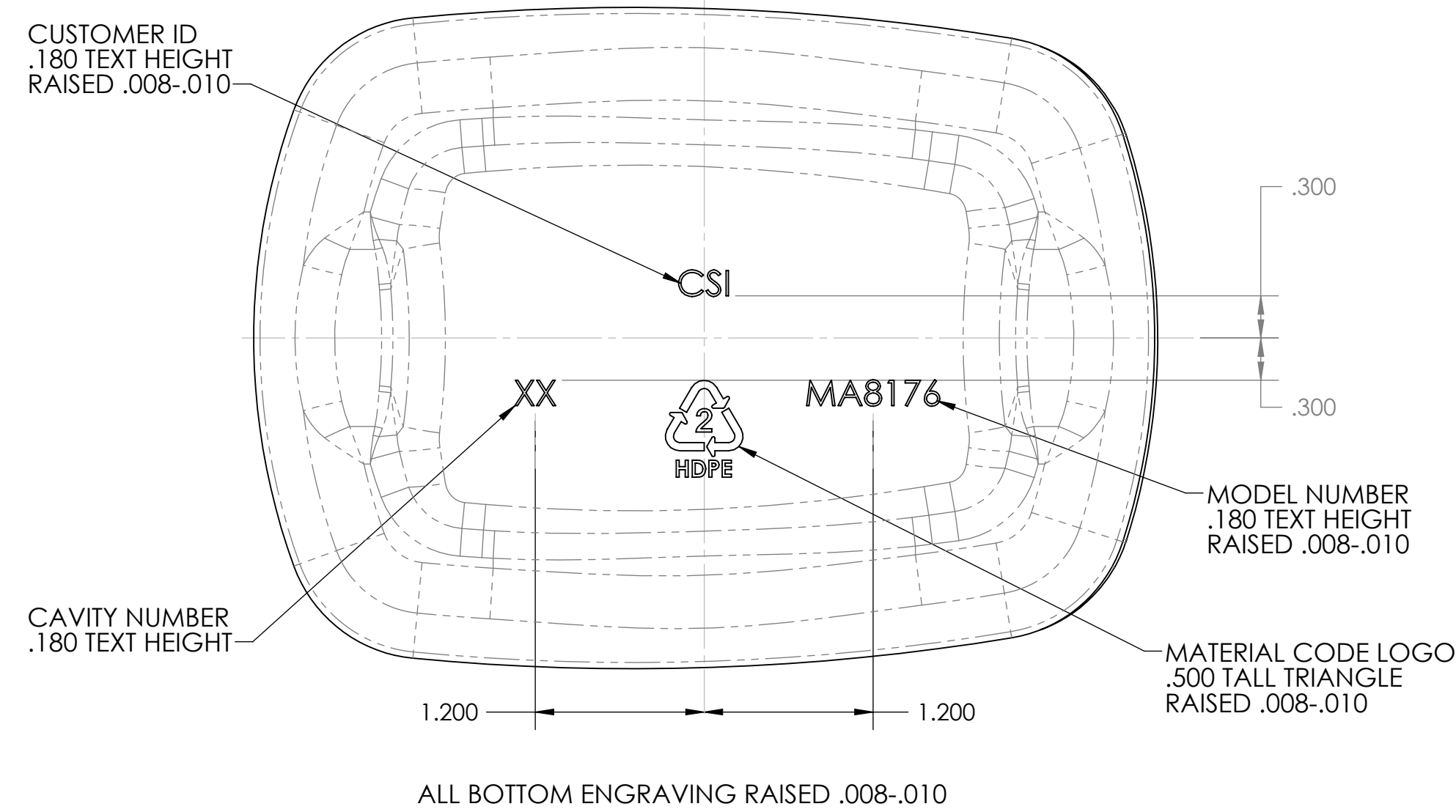


TOP VIEW



- 38mm SP400 'M' STYLE:
1. 6 THREADS PER INCH
 2. 1 TURN OF FULL THREAD
 3. THREAD START 90° TO P.L. IN BUSING HALF



- Notes:
- 1) Tolerances Unless Specified:
 Vertical -- $\pm .080$ "
 Horizontal -- $\pm .090$ "
 Volumetric -- ± 1.50 oz.
 - 2) Bottles to be Checked Aged with 20°C water
 - 3) Estimated Bulge -- 3.50 oz.

PROPRIETARY AND CONFIDENTIAL <small>THE INFORMATION CONTAINED IN THIS DRAWING IS THE SOLE PROPERTY OF MID-AMERICA MACHINING, INC. ANY REPRODUCTION IN PART OR AS A WHOLE WITHOUT THE WRITTEN PERMISSION OF MID-AMERICA MACHINING, INC. IS PROHIBITED.</small>	Drawn By: KDG	Date: 20JUN09	Container Data:	
	Checked: SPK	Date: 20JUN09	Weight	130 grams
	Customer: CSI	Job#: 10141	Fill Level Capacity	128.0 oz.
	Reference Materials:		Overflow Capacity	133.8 oz.
	customer sample		Material	HDPE
			Avg. Wall Thickness	.031"



Description:	Product Drawing
	128oz. "D" Style
Size: D	Drawing Number: MA8176-2
Scale: 1:1	REV
	SHEET 1 OF 1