

TUBE SEAL SPEC SHEET

HEATER LOCATION _____

"A" - TUBE SIZE: OUTSIDE DIAMETER _____

"B" - COLLAR SIZE: OUTSIDE DIAMETER _____

"C" LIMITS OF TUBE SEAL IN COLD POSITION _____

"C" LIMITS OF TUBE SEAL IN HOT POSITION _____

"F" TUBE SPACING _____

LENGTH OF TUBES _____

NUMBER OF TUBES _____

MAXIMUM AXIAL INCHES OF THERMAL GROWTH _____

MAXIMUM LATERAL MOTION OF TUBE _____

INSIDE HEATER TEMPERATURE _____

INTERNAL HEATER PRESSURE (DRAFT) _____

CONDITION OF RETURN COVER OR HEATER PLATE _____

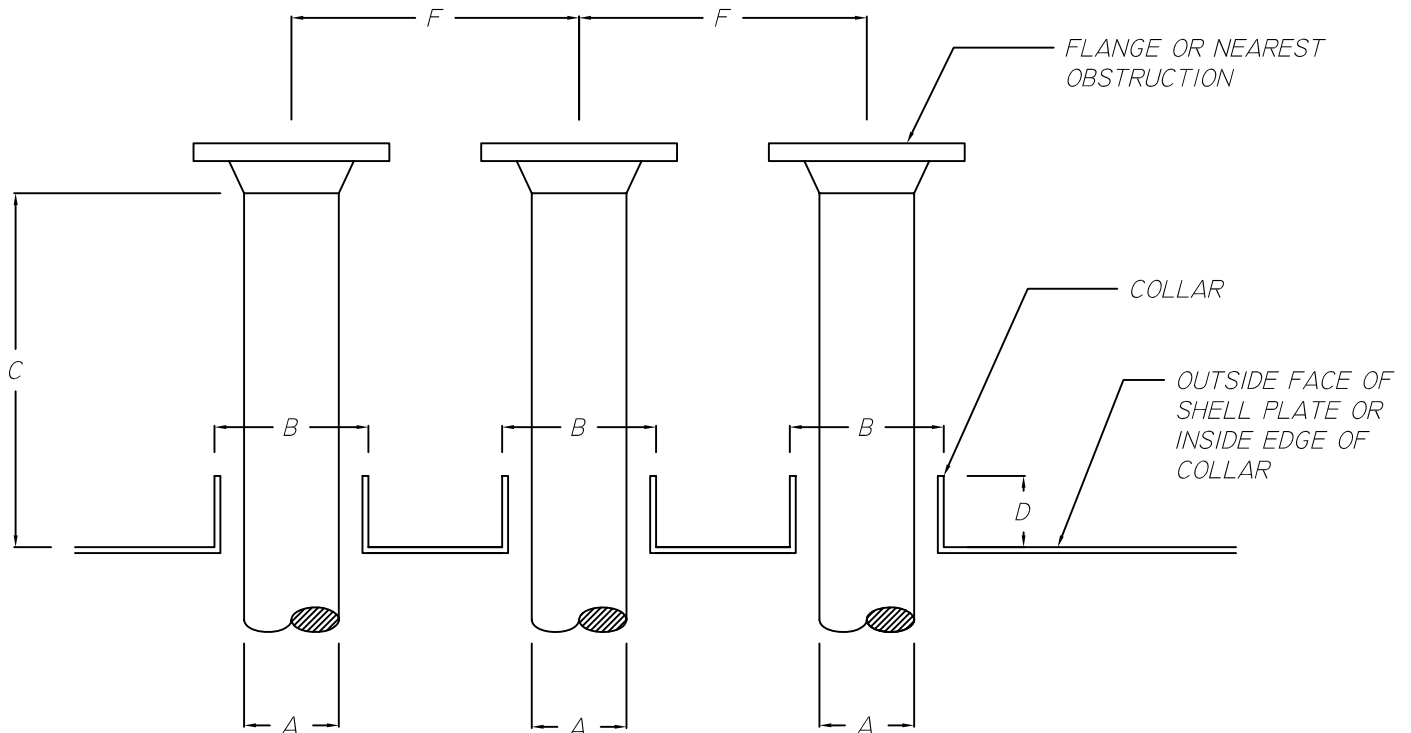
TUBE EXIT LOCATION (SIDE, TOP, BOTTOM) _____

"D" - DEPTH OF COLLAR _____

TUBES EXPOSED TO WEATHER (Y/N) _____

CLOSURE STYLE

- ___ CLAMPS / STEEL GRADE _____
- ___ VELCRO _____
- ___ VELCRO W/ D-RINGS _____
- ___ HOG RINGS / STEEL GRADE _____
- ___ OTHER _____



IMPORTANT DISCLAIMER

THIS DRAWING IS THE PROPERTY OF DELTA REFRACTORIES, INC. REDISTRIBUTION, PHYSICAL OR DIGITAL, OF THIS DRAWING IS STRICTLY PROHIBITED WITHOUT THE EXPRESSED WRITTEN CONSENT OF DELTA REFRACTORIES, INC.