

The Nordic



Option 1:



Option 2:

1,630 sqft 3 Bedroom 3 Bath

DECK OPTIONS AVAILABLE



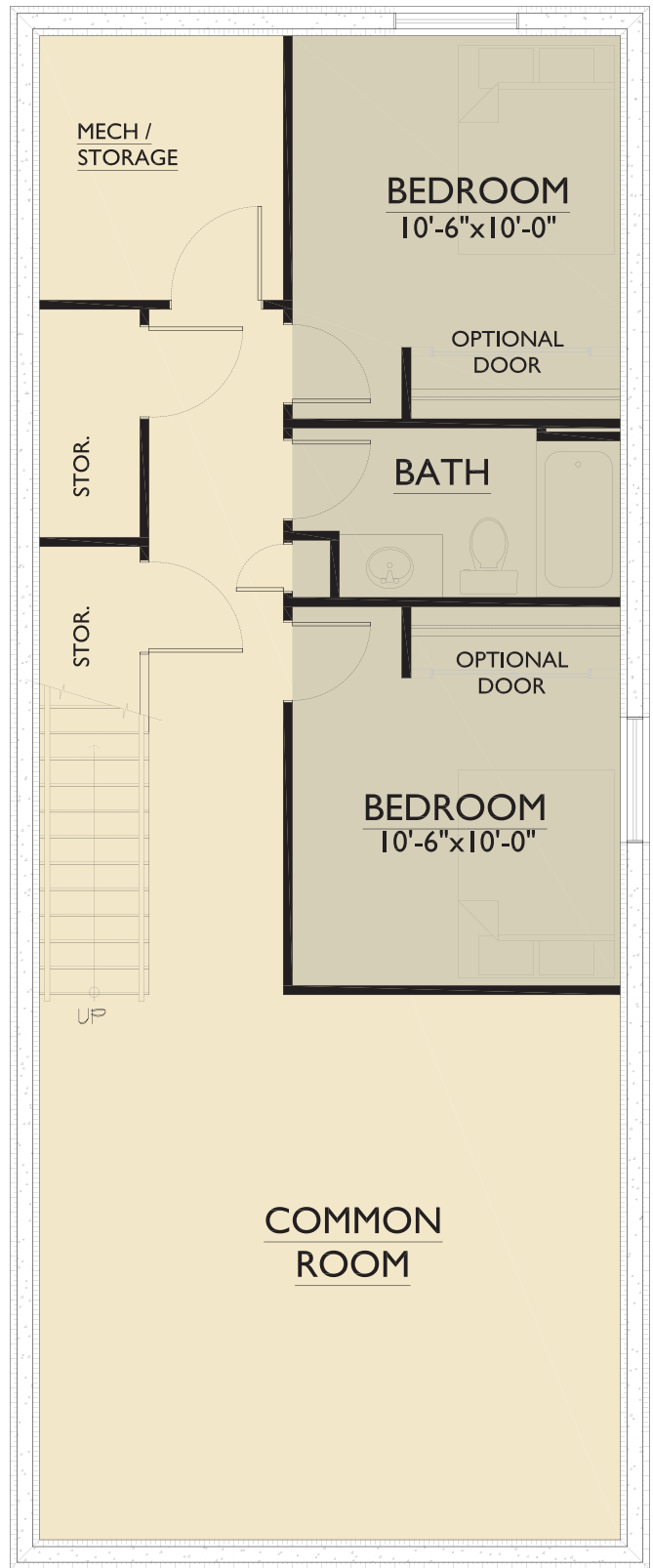
Available options:
 Un-Insulated Storage Garage
 or bedroom and gear
 storage which adds
 185 sqft. (1,175 Total)

Main Floor Plan
 990 sqft

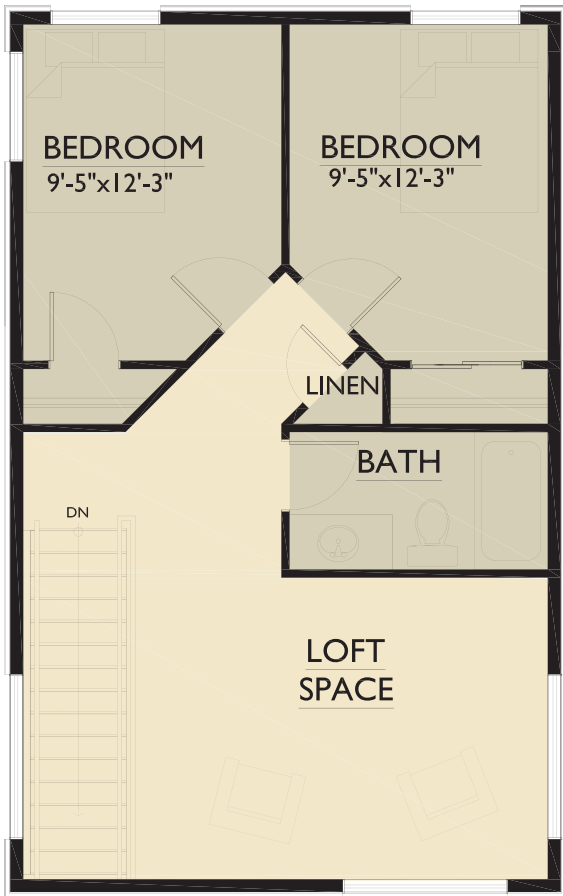
The Nordic 1,630 sqft Main Floor
 1-2 bedroom @ Main Floor



Additional basement bedroom adds 185 sqft (1,175 Total)



Basement Floor 990 sqft



Loft Floor 640 sqft

Loft Floor
2 bedroom @ Loft

Basement
2-3 bedroom @ Basement

Standard Specifications For All Model Base Pricing:

Energy Efficiency

- Built Green ® GOLD
- EnergyStar ®
- Professionally modeled and verified by a Certified Energy Advisor to maximize efficiency of the house & provide construction far beyond the requirements of the building code
- Dual Glazed, low E coated metal clad wood interior windows
- Tye Signature exterior sealing and insulation system - option
 - Consisting of SIGA air sealing & exterior r6 rigid insulated cladding to virtually eliminate thermal bridging and exterior air penetration
- Heil Deluxe High Efficient 2 stage gas furnace Or optional in floor radiant heat with polished colored concrete floors, all Levels.
- VanEE Heat Recovery Ventilator (HRV) providing cleaner fresh air, superior climate control and reduced heating (& cooling) costs
- R28 insulation @ exterior walls & R60 insulation @ ceilings - option
- LED lighting throughout
- Remote Accessible "Smart" Nest Thermostat
- Solar ready rough in complete for solar installation

Exterior

- Select from 6 color schemes
- Low maintenance Allura concrete composite siding, smart trim window, door & accent trims
- Handcrafted timber frame accents
- Timber handrail posts with iron railings (as required)
- Trex Select decking at front decks - option

Interior

- Handcrafted kitchen cabinets and bath vanities
- Frigidaire Stainless Steel Appliances
 - For complete list please inquire within
- Tye Signature interior finishing, Millwork grade knotty pine trim & interior doors throughout
- Delta Lahara fixtures & Toto toilets throughout
- Upgrade available to different Delta series lines (ie. Trinsic, Addison, Arzo) as well as updates available to different fixture finishes
- Select from 5 flooring/ color schemes
- Cat 5 electrical, customizable electrical plan available for your specific requirements

Contact Tye for additional upgrades available for each model.



Dedicated to building beautiful homes,
committed to evolving the future of building
in the Kootenays



Canadian
Home Builders'
Association



Features