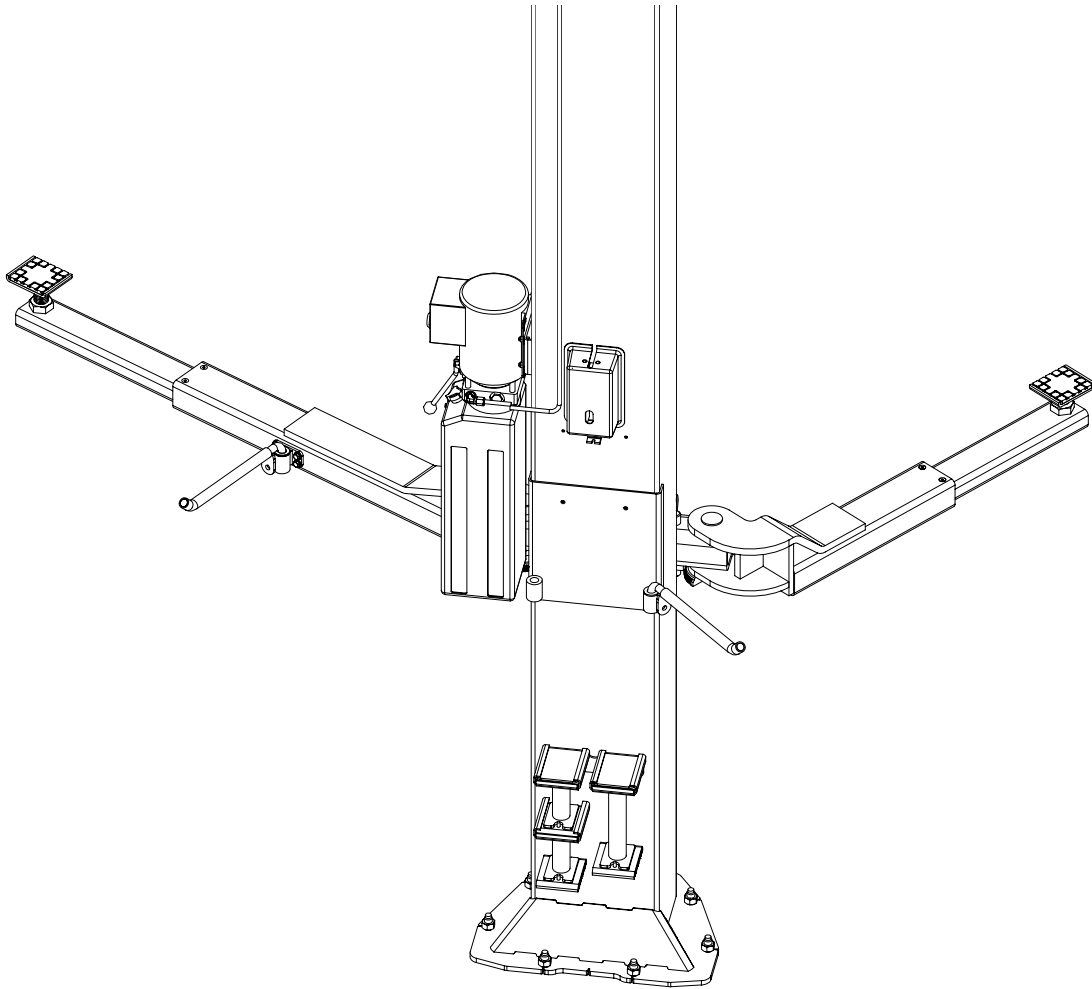


CL Challenger Lifts

INSTALLATION MANUAL

THK

Bolt-On Tire Hanger Kit for Models 39000 and CL10



200 Cabel Street, P.O. Box 3944 Louisville, Kentucky 40201-3944

Email: sales@challengerlifts.com Web site: www.challengerlifts.com

Office 800-648-5438 / 502-625-0700 Fax 502-587-1933

**IMPORTANT: READ THIS MANUAL
COMPLETELY BEFORE INSTALLING or OPERATING LIFT**

THK Installation Instructions

RECEIVING

The shipment should be thoroughly inspected as soon as it is received. The signed bill of lading is acknowledgement by the carrier of receipt in good condition of shipment covered by our invoice.

If any of the goods called for on this bill of lading are shorted or damaged, do not accept them until the carrier makes a notation on the freight bill of the shorted or damaged goods. Do this for your own protection.

NOTIFY **Challenger Lifts** AT ONCE if any hidden loss or damage is discovered after receipt.

IT IS DIFFICULT TO COLLECT FOR LOSS OR DAMAGE AFTER YOU HAVE GIVEN THE CARRIER A CLEAR RECEIPT.

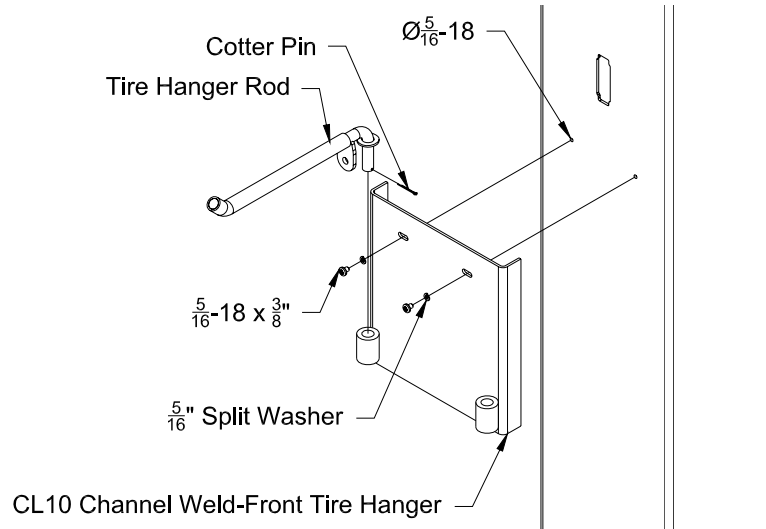
File your claim with **Challenger Lifts** promptly. Support your claim with copies of the bill of lading, freight bill, and photographs, if available.

Component Packing List

PART #	QTY/ LIFT	DESCRIPTION
TH-01	4	Tire Hanger Rod Weld
TH-02	2	Tire Hanger Bracket
P2002-04	2	CL10 Channel Weld-Front Tire Hanger
TH-03	8	3/8-16 x 1/2 Hex Flange Head Bolt
40126	4	1/8 x 1 1/2 Cotter Pin
10335	4	5/16-18 x 3/8 Phillips Pan Head Screw
31331	4	5/16 Split Lock Washer
THK-IOM	1	Installation Manual

Installation

Column Assembly



1. Locate the 1/4" holes already in the column and tap 5/16-18 NC. If there are accessories located at that location find a suitable working height and using the Tire Hanger Bracket as a template drill two 1/4" holes and tap 5/16-18 NC.
2. Attach the Channel Weld to the column with the 5/16-18 hardware as shown. Assemble one Tire hanger Rod in the barrel nearest the front of the lift and attach with the cotter pin as shown above.

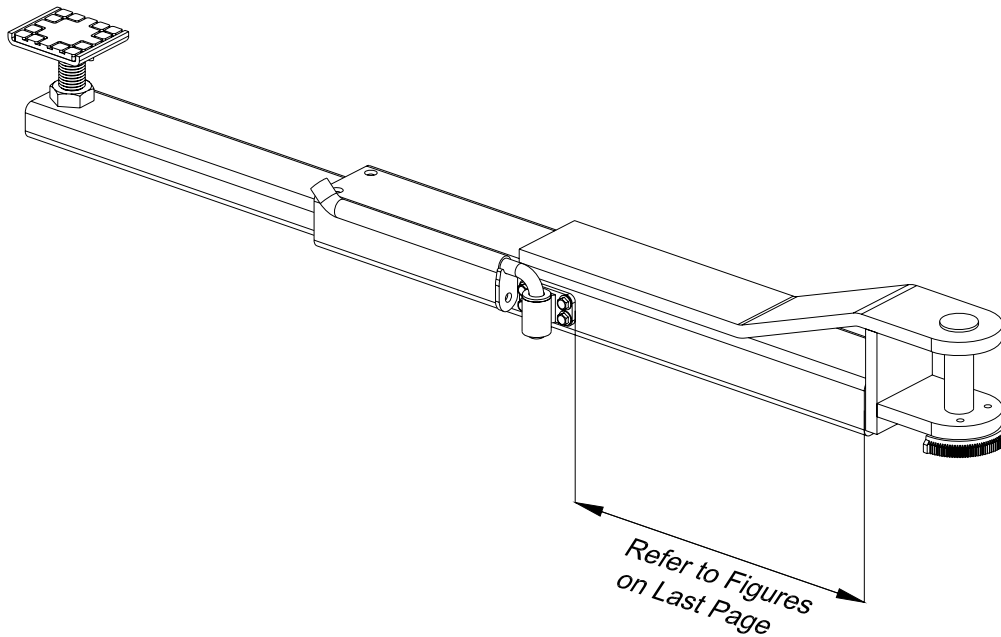
Arm Assembly and Identification

The Models 39000 and CI10 have been supplied with many different arm configurations over the years of production. Using the figures on the last page identify which style most closely matches the arms on the lift you are wishing to install the Tire Hangers on and refer to this figure for each of the Steps below.

1. Raise lift to a comfortable working height.
2. Identify the proper Arm Configuration from figures on the last page.
3. Remove Arm Stop hardware.
4. Remove Male portion(s) of arm.

THK Installation Instructions

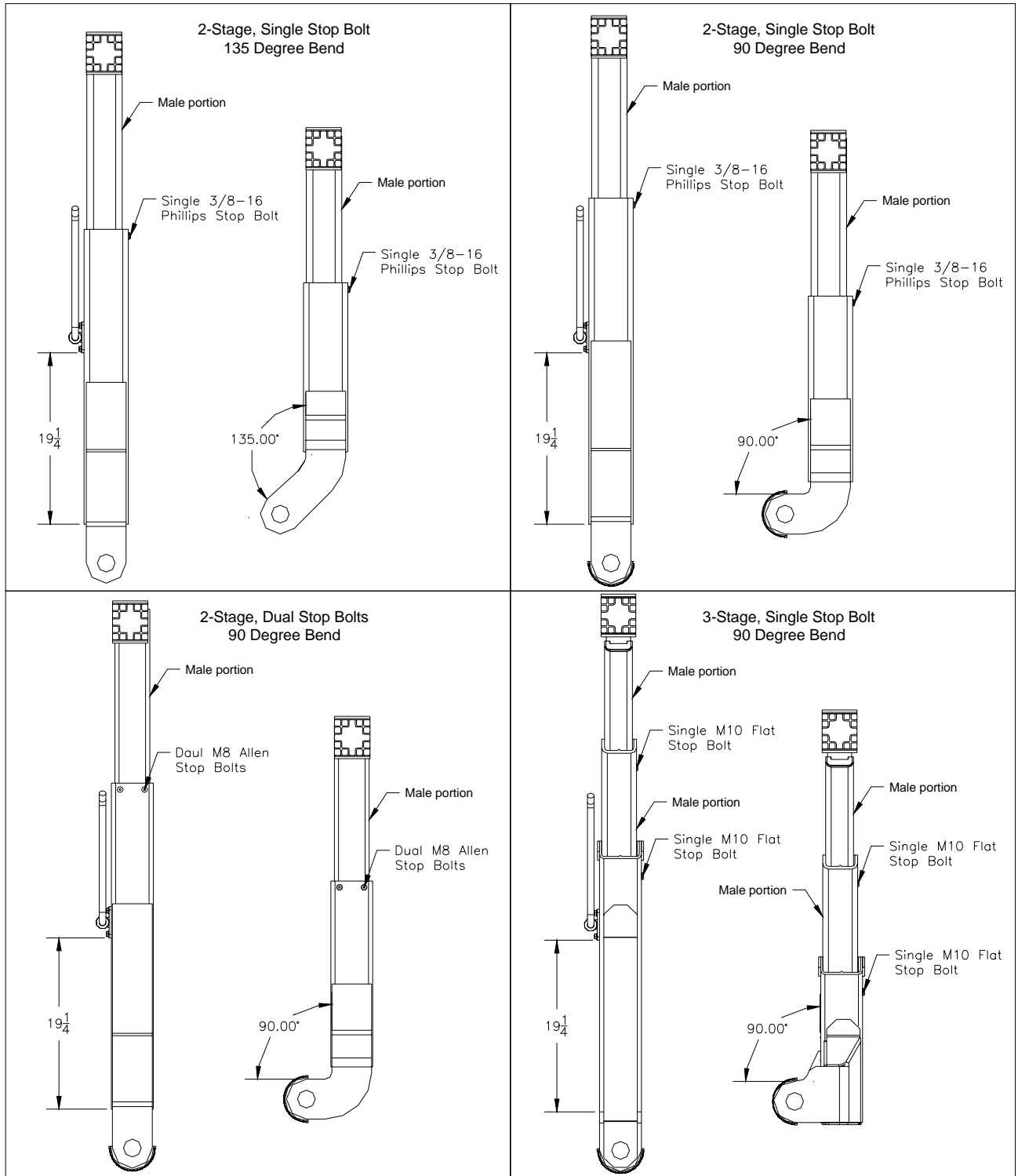
5. Locate bracket on female arm as seen in the figure below, centering it vertically on the tube. Refer to the figures on the last page for the corresponding dimension for your Arm Style.



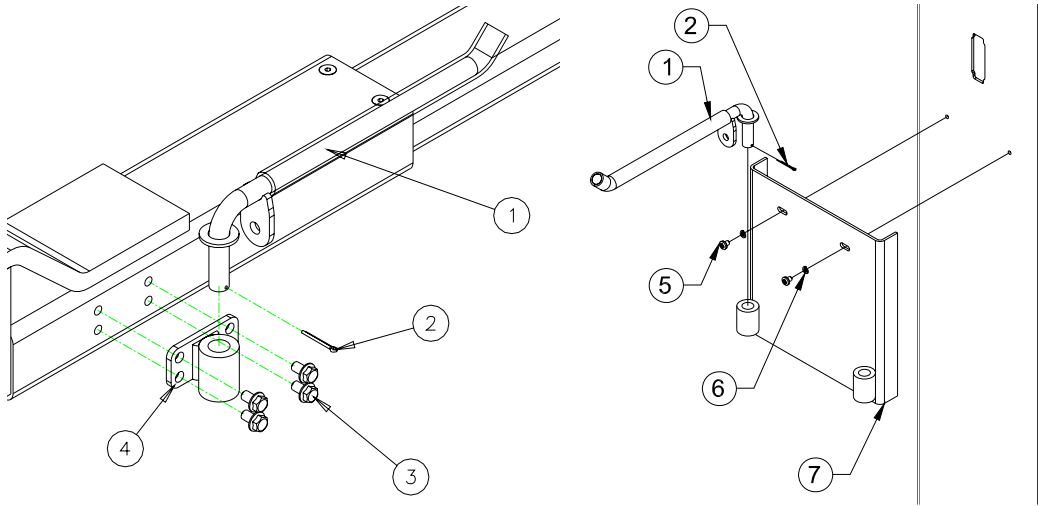
Note: Measurements shown are from the end of the Female Tube.

6. Using the bracket as a template mark the hole locations.
7. Drill (4) 5/16 Diameter holes where marked.
8. Tap each hole 3/8-16.
9. Clean debris from inside of the Female Arm Tube.
10. Mount the Tire Hanger Bracket using the 3/8-16 x 1/2 Hex Flange Head Bolts supplied.
11. Assemble the Tire Hanger Rod using the 1/8" Cotter Pin supplied.
12. Re-assemble the Male Arm Tube(s) and Arm Stop Hardware.
13. Verify that the arm telescopes freely.

THK Installation Instructions



Parts Breakdown



Item	Part	Qty. / Lift	DESCRIPTION
1	TH-01	4	Tire Hanger Rod
2	40126	4	1/8 x 1 1/2 Cotter Pin
3	TH-03	8	3/8-16 x 1/2 Hex Serrated Flange Head Bolt
4	TH-02	2	Tire Hanger Bracket
5	10335	4	5/16-18 x 3/8 Phillips Pan Head Screw
6	31331	4	5/16 Split Lock Washer
7	P2002-04	2	CL10 Channel Weld-Front Tire Hanger

IMPORTANT

Replace all worn or broken parts with **genuine Challenger Lifts, Inc. parts**. Contact your local Challenger Lifts parts distributor for pricing and availability. Call Challenger Lifts, Inc. at **(502) 625-0700** for the distributor in your area.