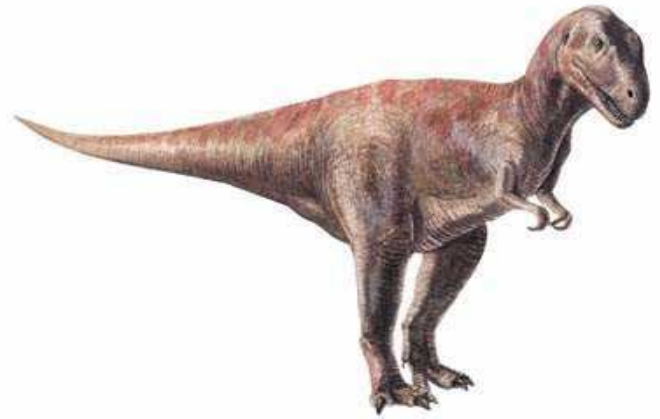


Albertosaurus

al-BERT-oh-SAW-rus

Family: Tyrannosauridae
Size: 8m (26 ft) long
Food: Meat: other dinosaurs
Period: Late Cretaceous
Range: North America: Alberta, Montana

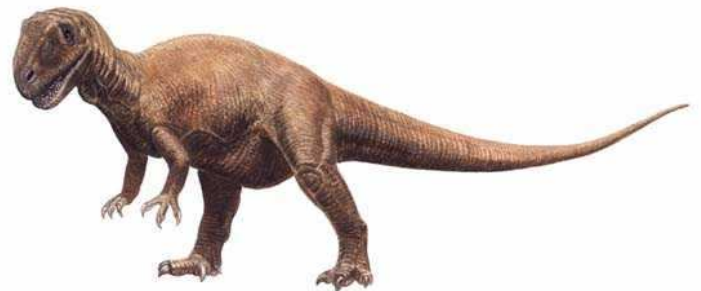


Albertosaurus

Allosaurus

AL-oh-SAW-rus

Family: Allosauridae
Size: Up to 12m (40 ft) long
Food: Meat: other dinosaurs
Period: Late Jurassic
Range: Africa: Tanzania; North America: Colorado, Utah, Wyoming; Australia

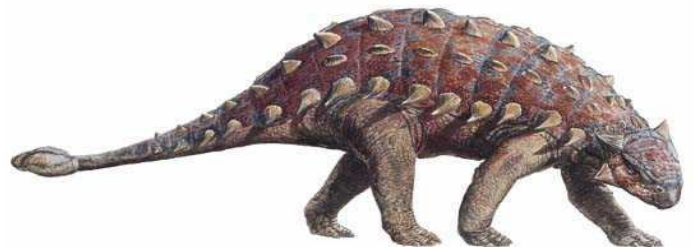


Allosaurus

Ankylosaurus

ANK-ih-low-SAW-rus

Family: Ankylosauridae
Size: 11m (36 ft) long
Food: Plants
Period: Late Cretaceous
Range: North America: Alberta, Montana

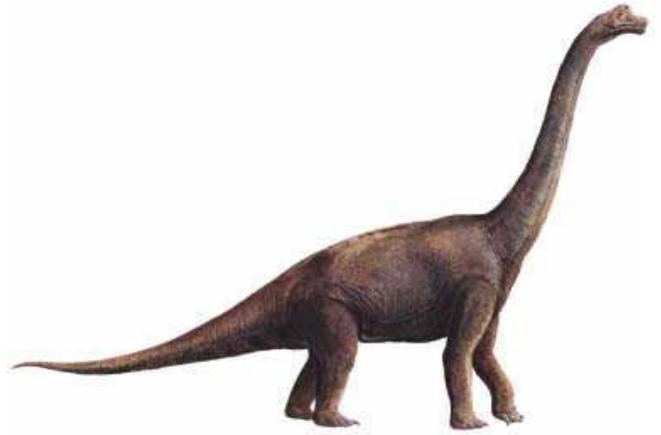


Ankylosaurus

Brachiosaurus

BRAK-ee-oh-SAW-rus

Family: Brachiosauridae
Size: 23m (75ft) long
Food: Leaves, tender shoots
Period: Late Jurassic
Range: Africa: Algeria, Tanzania;
North America: Colorado

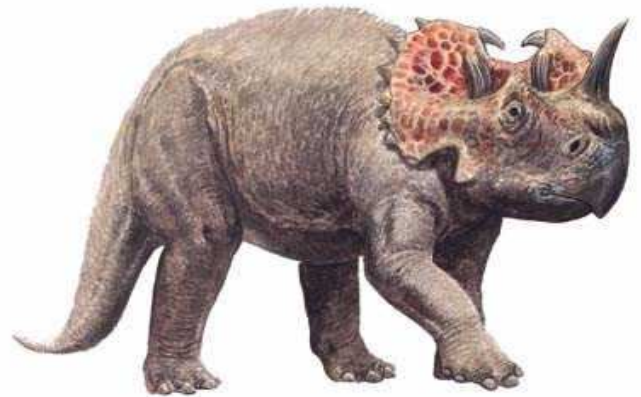


Brachiosaurus

Centrosaurus

SEN-troh-SAW-rus

Family: Ceratopsidae
Size: 6m (20ft) long
Food: Plants
Period: Late Cretaceous
Range: North America: Alberta,
Montana



Centrosaurus

Corythosaurus

ko-RITH-oh-SAW-rus

Family: Hadrosauridae
Size: 9m (30 ft) long
Food: Plants
Period: Late Cretaceous
Range: North America: Alberta,
Montana



Corythosaurus

Dilophosaurus

die-LOAF-oh-SAW-rus

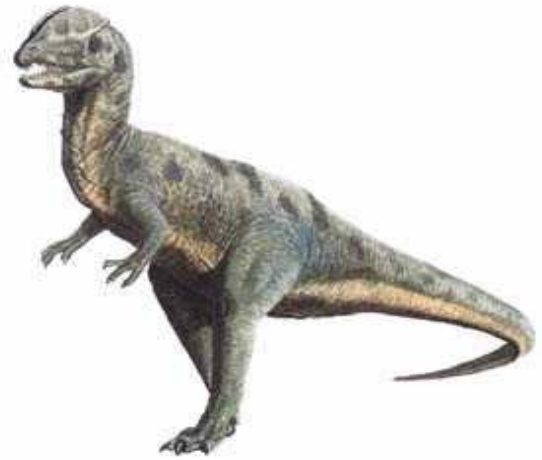
Family: Ceratosauridae

Size: 6 m (20 ft) long

Food: Meat

Period: Early Jurassic

Range: North America: Arizona;
Antarctica



Dilophosaurus

Dromaeosaurus

DROH-may-oh-SAW-rus

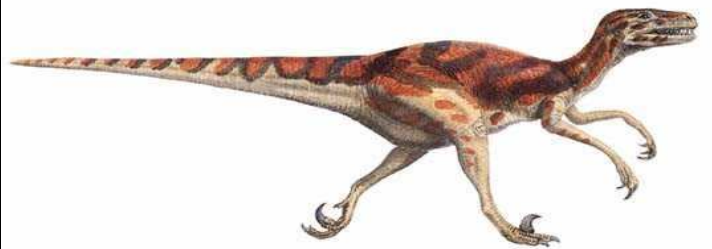
Family: Dromaeosauridae

Size: 1.8m (6ft) long

Food: Meat

Period: Late Cretaceous

Range: North America: Alberta



Dromaeosaurus

Euoplocephalus

you-op-loh-KEF-ah-lus

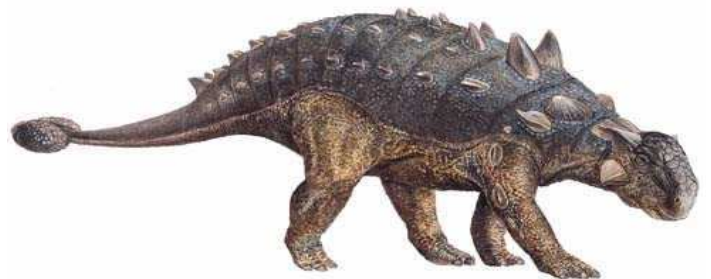
Family: Ankylosauridae

Size: 5.5m (18 ft) long

Food: Plants

Period: Late Cretaceous

Range: North America: Alberta



Euoplocephalus

Hypsilophodon

hip-see-LOAF-oh-don

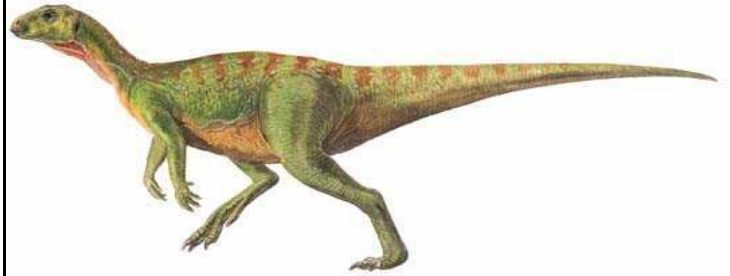
Family: Hypsilophodontidae

Size: 1.5m (5ft) long

Food: Plants

Period: Early Cretaceous

Range: Europe: England, Portugal



Hypsilophodon

Kentrosaurus

KEN-tro-SAW-rus

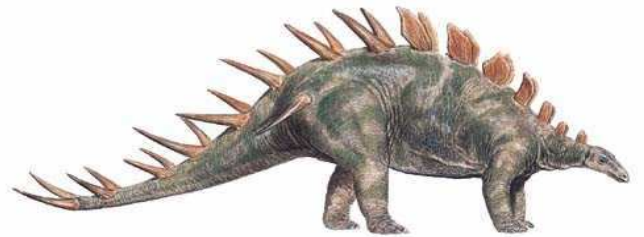
Family: Stegosauridae

Size: 5m (16ft) long

Food: Plants: tough cycads

Period: Early Jurassic

Range: Africa: Tanzania



Kentrosaurus

Massospondylus

MASS-oh-SPOND-ih-lus

Family: Plateosauridae

Size: 4m (13ft) long

Food: Plants

Period: Late Triassic

Range: North America: Arizona; Africa:
South Africa, Zimbabwe



Massospondylus

Nodosaurus

NODE-oh-SAW-rus

Family: Nodosauridae

Size: 6m (20ft) long

Food: Plants

Period: Late Cretaceous

Range: North America: Kansas,
Wyoming



Nodosaurus

Ouranosaurus

OO-ran-oh-SAW-rus

Family: Iguanodontidae

Size: 7m (23ft) long

Food: Plants

Period: Early Cretaceous

Range: Africa: Niger



Ouranosaurus

Oviraptor

OHV-ih-RAP-tor

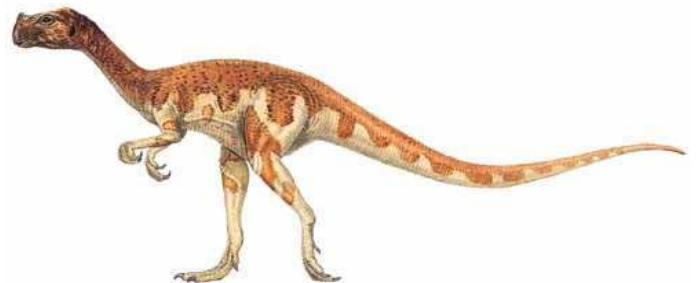
Family: Oviraptoridae

Size: 1.8m (6ft) long

Food: Meat

Period: Late Cretaceous

Range: Asia: Mongolia

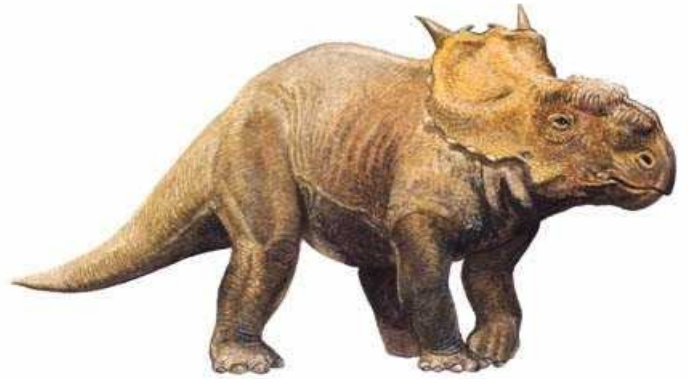


Oviraptor

Pachyrhinosaurus

PAK-ee-RINE-oh-SAW-rus

Family: Ceratopsidae
Size: 5.5m (18ft) long
Food: Plants
Period: Late Cretaceous
Range: North America: Alberta

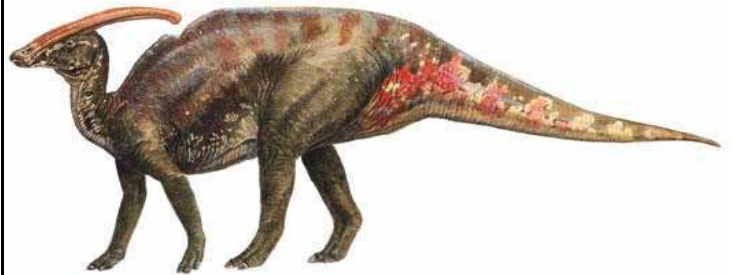


Pachyrhinosaurus

Parasaurolophus

par-a-SORE-oh-LOAF-us

Family: Hadrosauridae
Size: 9m (30ft) long
Food: Plants
Period: Late Cretaceous
Range: North America: Alberta, New Mexico, Utah

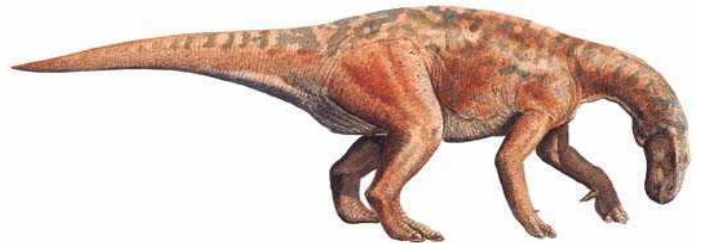


Parasaurolophus

Probactrosaurus

PROH-BAK-troh-SAW-rus

Family: Iguanodontidae
Size: 6m (20ft) long
Food: Plants
Period: Early Cretaceous
Range: Asia: China

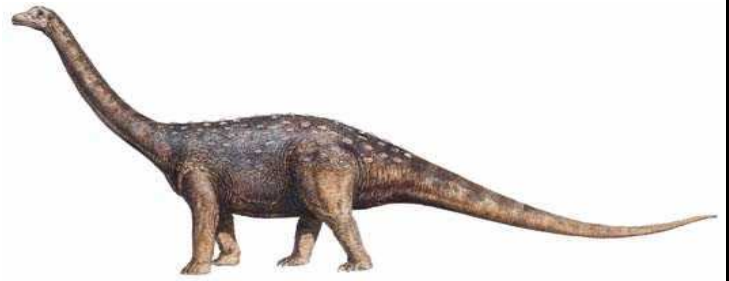


Probactrosaurus

Saltasaurus

SALT-a-SAW-rus

Family: Titanosauridae
Size: 12m (40ft) long
Food: Plants: treetop shoots/ leaves
Period: Late Cretaceous
Range: South America: Argentina

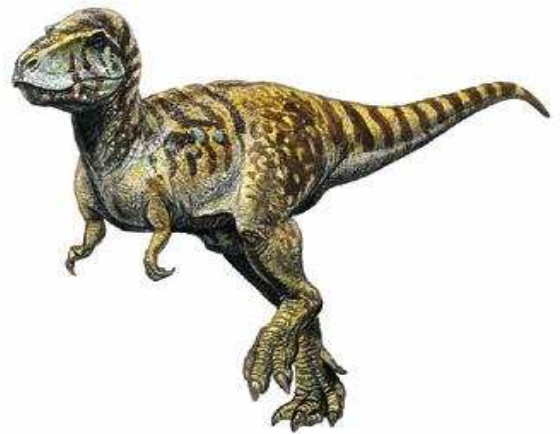


Saltasaurus

Siamotyrannus

sigh-AM-oh-tie-ran-us

Family: Tyrannosauridae
Size: 5-7m (16-23ft) long
Food: Meat: other dinosaurs
Period: Late Cretaceous
Range: Asia: Thailand

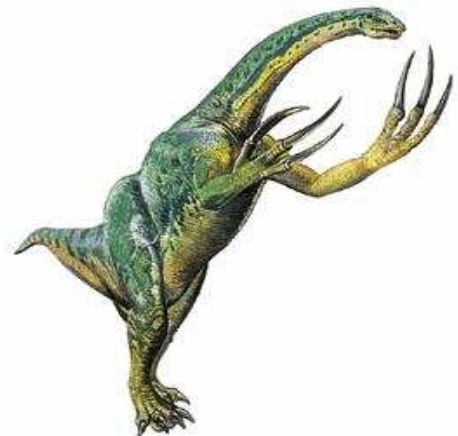


Siamontyrannus

Therizinosaurus

THER-ih-zin-oh-SAW-rus

Family: Therizinosauridae
Size: 4-5m (13-16ft) long
Food: Meat, maybe also leaves
Period: Late Cretaceous
Range: Asia: China, Mongolia



Therizinosaurus

Triceratops

try-SERRA-tops

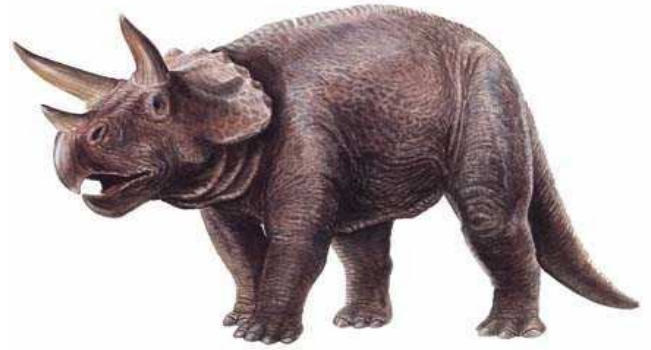
Family: Ceratopsidae

Size: 9m (30ft) long

Food: Plants

Period: Late Cretaceous

Range: North America: Alberta, Colorado, Montana, Saskatchewan, South Dakota, Wyoming



Triceratops

Velociraptor

vel-O-si-RAP-tor

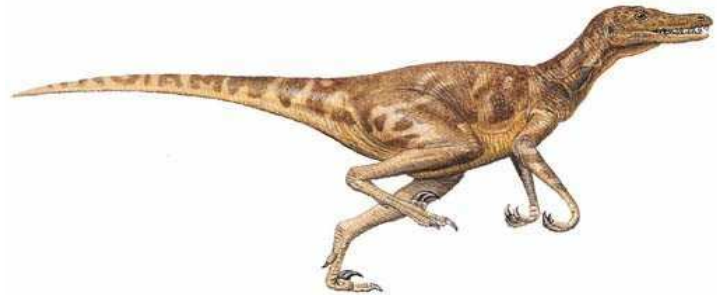
Family: Dromaeosauridae

Size: 1.8m (6ft) long

Food: Meat

Period: Late Cretaceous

Range: Asia: China, Mongolia



Velociraptor

Yangchuanosaurus

yang-choo-AN-oh-SAW-rus

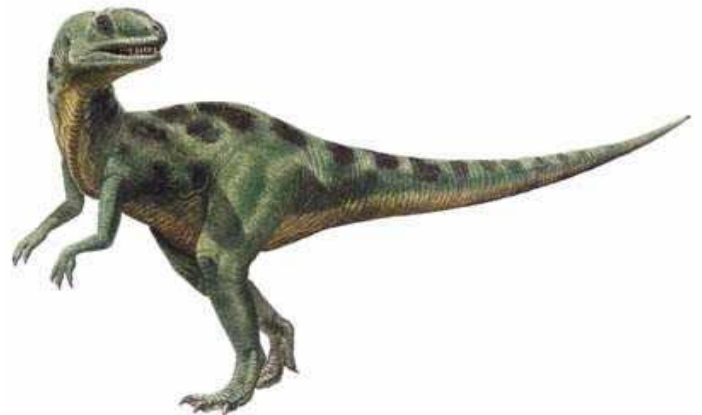
Family: Allosauridae

Size: Up to 10m (33ft) long

Food: Meat

Period: Late Jurassic

Range: Asia, China



Yangchuanosaurus