



WEST GADSDEN HISTORICAL SOCIETY, INC.

NEWSLETTER

P. O. Drawer D
Ph. 850.442.6434
www.GadsdenHistory.org

Greensboro, FL 32330
E-mail: info@gadsdenhistory.org
Like us on Facebook

Vol. 11, No. 2

JUNE 2016

PAST EVENTS

Sunday, May 22
Monthly Meeting

The Florida Territory Becomes a State Gadsden County and the Election of May 26, 1845

The previously announced dedication ceremony of the John Sullenberger Children's Room at the Depot Museum to be held on May 22 has been postponed until further notice. Keep watching for the announcement of the new date for this exciting event.

In lieu of the Dedication, Jane Wagner Clark presented a program about the first Florida state-wide election held after Florida became the 27th state - March 3, 1845. The program reviewed Gadsden County's participation in this historic election with a listing of precincts and voters. Many in attendance were able to identify an ancestor.

UPCOMING EVENTS

SATURDAY, JUNE 25

25th Annual Tallahassee Model Railroad Show and Sale

Join WGHS Saturday, June 25, 9 am to 4 pm at the North Florida Fairgrounds in Tallahassee. The 25th Annual Tallahassee Model Railroad Show and Sale is sponsored by the BBMRA and

is certain to be an outstanding event. Model train layouts from large "G" scale to the tiny "Z" scale will be on display, along with experts on hand to answer your model train design, layout, equipment and construction questions. A variety of vendors will be on-site offering various model railroad items. WGHS will be represented by several of our members. Our booth will provide information on the Greensboro Railroad Depot Museum, as well as offer for sale our T-Shirts, notecards, and books. Admission: Adults & Children 13 and over \$6, Scouts in Uniform as well as Children 12 and under are free. Be sure to get on board and join us at this wonderful and fun event!



MONDAY, JULY 4
WGHS 12th Annual Open House

The West Gadsden Historical Society will celebrate its 12th Annual Open House on Monday, July 4 from 9 a.m. until 2 p.m. at the historic Dezell House, 328 E. 8th St., and at the Greensboro Depot Railroad Museum complex, 115 Duffle St., Greensboro. Due to construction activities at the Dezell House, the Bake Sale, Seafood Lunch by Coastal Seafood, and Book Signing by Dale Cox will be held at the Depot complex. Throughout the year new items and exhibits continue to be added within the Depot Museum. We appreciate all the contributions and loans that we have received from our friends and neighbors.

As always, the Dezell House will be open for viewing of various historical displays and items that are on exhibit. WGHS has received a \$38,600 grant from the FL Bureau of Historic Preservation for further renovation to the Dezell House. New cypress shingle siding has replaced the old T1-11 lower exterior siding and a new handicapped ramp as well as a small deck are being added at the rear entrance. Complete renovation of the restroom is presently underway to meet ADA requirements; therefore, no restroom facilities will be available within the house. Due to circumstances not under the control of WGHS, the project is taking longer than expected and its completion will be after July 4. Be sure to come and see the collection of Greensboro High School yearbooks that Buddy Pitts recently donated to the Society. We are most appreciative for these and they certainly add to the Greensboro High School memorabilia that is on display in the Dezell House. A few duplicate issues of GHS yearbooks will be available for purchase. Digitized copies of yearbooks can be special ordered.

This year's activities located at the Greensboro Depot Railroad Museum complex will include: (1) Annual Bake Sale – This is your chance to get some homemade baked goods while contributing to a worthy cause; (2) Coastal Seafood Lunch – We look forward to the return each year of Coastal Seafood Restaurant of Panacea who will be offering scrumptious seafood lunches from 11:30 a.m. – 1:30 p.m.; and (3) Book Signing by Dale Cox, who is a well-known historian from Two Egg, FL and author of

West Gadsden Historical Society, a small, volunteer, local non-profit with a 501(c)(3) designation, depends solely on the generosity of our members, local businesses and all others interested in the preservation of Gadsden County's history to help us remain financially strong. As always, your donations and membership dues are tax deductible to the fullest extent allowed by law. Your consideration and help will truly be appreciated!

many books on U.S. history -- Dale has written extensively about Florida history and his books have achieved critical acclaim and rank among the best-selling nonfiction books on history. Don't miss out on this opportunity to get your author signed copies of Dale's books. These books make a wonderful addition to your library as well as gifts for family and friends. The books of local interest authored by Dale are: (1 & 2) *The History of Jackson Co., Florida: The Early Years* (Vol. I) and *The Civil War Years* (Vol. II); (3) *The Early History of Gadsden County*; (4) *Old Parramore: The History of a Florida Ghost Town*; (5) *The Battle of Marianna, Florida*; (6) *The Battle of Natural Bridge, Florida*; (7) *The Ghost of Bellamy Bridge*; (8) *The Claude Neal Lynching: The 1934 Murders of Claude Neal and Lola Cannady*; (9) *The Scott Massacre of 1817*; (10) *Milly Francis: The Life and Time of the Creek Pocahontas*; (11) *Death at Dozier School*; (12) *Nicolls' Outpost: A War of 1812 Fort at Chattahoochee, Florida*; (13) *Two Egg, Florida: A Collection of Ghost Stories, Legends & Unusual Fact*; (14) *A Christmas in Two Egg, Florida*; and the recently released (15) *Fort Scott, Fort Hughes & Camp Recovery: Three 19th Century Military Sites in Southwest Georgia*.

The West Gadsden Historical Society invites you to come and enjoy time visiting with your family, friends, and neighbors. We appreciate the tremendous support received each year from Greensboro and the surrounding communities. We look forward to seeing you again this year. For further information, please e-mail info@gadsdenhistory.org, or call 850-442-6434.

Support and Give to WGHS

Your membership and gifts support West Gadsden Historical Society's mission to preserve the history of Gadsden County. As WGHS continues to meet the growing demand for collections and programs both online and at the various events held each year, now is the time to partner with us to ensure that future generations may continue to discover Gadsden County's history and heritage.

Our mission relies on your partnership to keep the County's stories alive! Your gift supports everything we do, from education and public events to research and preserving collections.

One of our current needs is that of a 10'x10' or larger shelter tent. In fact, we could use several. Owning our own tents will defray rental fees. If you are interested in donating a tent or funds to help purchase one, please make your tax exempt donation today. Thank you.

MEMBERSHIP DUES

We appreciate all of you who renewed your membership this year! Help your Historical Society grow by securing a membership for a loved one or someone who just loves history. Memberships make wonderful gifts for those "hard to buy for" folks. So keep us in mind!

Yearly Dues

| | |
|-----------------|----------|
| Each Individual | \$25.00 |
| Business | \$250.00 |

One Time "Lifetime" Membership Dues

| | |
|-----------------|----------|
| Each Individual | \$500.00 |
|-----------------|----------|

DONATION LEVELS

| | |
|-----------------|----------------------|
| Heritage Circle | \$25,000 - and above |
| Legacy Builders | \$15,000 to \$24,999 |
| Patrons | \$10,000 to \$14,999 |
| Founders | \$5,000 to \$9,999 |
| Explorers | \$2,500 to \$4,999 |
| Traiblazers | \$1,000 to \$2,499 |
| Homesteaders | \$500 to \$999 |
| Settlers | \$250 to \$499 |
| Pioneers | \$100 to \$249 |
| Friends | up to \$99 |

Welcome to
amazon smile

You can also support WGHS as you purchase items from AMAZON. Amazon donates 0.5% of the purchase price to West Gadsden Historical Society when you shop @AmazonSmile. <http://smile.amazon.com/ch/20-1294840>

NOTE OF THANKS

We want to thank J. B. Messer for the wonderful donation of an old railroad depot passenger bench. Mr. J. B. Messer, worked 38 years as a communications maintainer for the Seaboard Airline, the Atlantic Coast Line and CSX railroads. This 1800's bench was previously located at the New Monticello Depot and proudly has a new home at the Greensboro Depot Railroad Museum. It has been cleaned and preserved by John Canetta. Come by a sit awhile on this new old acquisition; you never know you might just get to wave at a train.

HISTORY LESSON

Once in a while, you come across a story that you just have to share. The following is one found in *Bits and Pieces, Glen Julia – Circa – 1821-1871, Mt. Pleasant – Circa – 1871-1996* written by Rachel Hubbard-Scott October 29, 1996.

MT. PLEASANT COMMUNITY -- STORES, TRAINS, AND ROADS



Archie N. Hubbard House
Mt. Pleasant, Florida

Mt. Pleasant has always been a "small community" located about half way between

Marianna and the Capitol of Florida, Tallahassee. In 1871, the Jacksonville-Pensacola-Mobile (Seaboard) [Railroad] was completed to the Apalachicola River from the East. The Chattahoochee and the Flint Rivers formed the Apalachicola River, running from the Northeast. The depot at Mt. Pleasant was located between the main track and the side track. Just west of the depot was a big barrel of water. This water was dipped out of the barrel by the firemen on the train while the passengers loaded or unloaded. Also, there were logs near the depot which the fireman and the engineer threw into the fire box of the engine. This "dipping of water" and "throwing of logs" made the "choo choo" go to the next town which was GRITNIE – later called Gretna.

So many happy memories were associated with this depot and railroad. Brides and Grooms came and went – Mr. and Mrs. Fred Nordhaus (Miss Bertie Strain) was a hometown girl. Her family came here from Oklahoma. There was another bride, Miss Daisy Williams, married Mr. Toole. They were the first couple to get married in the Glen Julia Church on May 20, 1906. Then there was Archibald Napoleon Hubbard and his bride, Rosa Lee Beggs, who arrived on Monday, December 27, 1909. My Mama thought everybody always met the train every afternoon. Not so. Little did she know that she was being "looked over" to see what that "use to be eligible bachelor" had brought home to be his wife. Mr. and Mrs. Amos Davis stepped off that same train one afternoon. Mr. Amos was born and raised about two and one-half miles West of Mt. Pleasant. "Miss Elizabeth" was a Neal from North Carolina.

At the time, which would have been around 1920, I remember there were three trains "running" through Mt. Pleasant – passenger trains, that is. The first one came from the West at 5:00 in the morning. I have been told by my good friend, Mary Grubb, that a lot of things happened when the engineer pulled on that whistle all the way through Mt. Pleasant. The chickens would get off the roost, the dogs would howl (the loud whistle hurt their ear drums), probably the cats moved over a bit and stretched the rest of the way, but it was said, and I know it is true because you know back in those days old folk never lied, that a lot of couples "just moved over" because it was not time to get up and start the fire, cook the

breakfast, feed the stock, milk the cows, etc. so there was nothing left to do but . . . and, according to some of the "boastful men", it was did. Nine months later there was the proof. Just south of the railroad and opposite the depot was a cement marker. According to the Geodetic Survey, Mt. Pleasant was the highest point in Florida, 302 feet above sea level. This survey since has been disputed by some South Floridians. They claim some place down near Lake Wales has the distinction now, which is a shame because this was about the "best" thing "Mt. Misery" had going for it through the years. We'll argue with you that MT. PLEASANT IS THE HIGHEST POINT IN FLORIDA. Joe Booth, one of our older historians, was another believer. Joe had a cement marker put up in front of his house, South Highway 90, with the following printed on the sign: "MT. PLEASANT FLORIDA 312 FEET ABOVE SEA LEVEL."

Mt. Pleasant, during my childhood, was a farming community. The freight trains, in the Spring of the year, unloaded scads of fertilizer on the side track for the farmers to pick up. Yes, in the Spring Mt. Pleasant was not only the highest point, but it was the "smelliest point" in Florida or anywhere else for that matter. The farmers would bring their two mule wagons out and unload the pure cow manure with billy forks from the open train cars to the wagon while the mules stood patiently by, wiggling their skin when a fly bit them or picking up their feet every now and then and then putting them back down in the same place. Now and then the old mule would shake his head to scare the flies off and you would hear the harness rattling from their head all the way down to where the lines joined the wagons. This fertilizer that fell on the ground while the "hands" were loading was picked up late in the afternoon by the local residents and put in their gardens to make the vegetables grow. Back then the flowers did not need to be fertilized; they just seemed to grow and thrive.

But let us go back and run the trains again. The five o'clock A.M. train brought the mail from the West. The mail man on the train was called the "sorter". He would throw off a bag of mail and pick up a bag of mail from the platform of the depot. Can you imagine leaving a bag of mail on the platform, out in the open, all night? Well, in the 30's we got uptown. The railroad installed a crane which would hold the mail bag

and a thing-a-ma-gig on the train would reach out and grab the bag of mail when the crane released it and the sorter would throw his bag off on the ground. This bag would stay right there on the ground until the Postmaster picked it up later. No mail bags ever came up missing. Mr. Boots Shepard was the Postmaster and later Dan Grubb, a little boy living in the community who Mr. Boots trained to be storekeeper and Postmaster. Dan Grubb was not only the Postmaster and storekeeper, after he bought the store, he was the best “fly swatter” in town. At this time, there were no screens at the windows anywhere, so during the fertilizer season the flies were plentiful. Dan never needed a fly swatter – he had one on the end of his arm. He could spot a fly in thin air, pull his wings off, and dash his brains out when he hit the floor. He carried this art to the church house. Right in the middle of a prayer, a sermon, singing “He Lives”, or during the offering, he caught flies with a lavish sweep of his arm, separated them, and threw them down on the wooden floor.

The “afternoon” train came through Mt. Pleasant at 4:00 P.M. This was visiting time for the men in the community. Coca Colas were just making their appearance or rather Mt. Pleasant had just heard of them. The men would get them a bottle of Coke out of the wooden ice box, cock their seats up on the counter in the store, and drink away and tell their tall tales. In the winter time, they would gather around the potbellied stove in the back of the store to drink their Cokes. In the summer time, the men would sit on the counter where the cloth was measured and sold. Oh, if only we had had recorders back then. The same tales were told and retold. One I remember well was the one this old gentleman told about seeing a “funny bird” flying overhead and he got his gun “and brought it down.” That was Agnes McKeowan’s pet parakeet that she had lost the day before.

At 12:00 at night there was another passenger train. This loud whistle probably aroused some people also, but it never got as much credit as the whistle on the five o’clock train in the early morning. Remember between “passenger trains” there were “freight trains”. Back then we had never heard of an 18 wheeler or refrigerator cars.

The Old Spanish Trail was the road from Pensacola to “Lord knows where”. I would say

from Pensacola to Madison ‘cause that was as far as I had ever ridden on a train and you would wonder why I ever road that far: ‘cause my brother Archie, Mama, Jean, Bill and I would go down to Madison every summer for a week vacation to visit the “Beggs kin” – up until Archie was 12 we made the trip by train. Daddy never could get off to go with us because somebody had to stay on the Davis Farm and see that things “went on.” The cows were milked morning and night, seven days a week; the horses fed and watered; the pigs and the chickens ---just things looked after in general. When we got back from Madison and after the last box of shade tobacco was delivered to the packing house in Quincy, which was usually in August, Daddy would take his week vacation and go to Panacea on the coast. We always looked forward to his return with the oysters, barrel of salt fish, roe and mullet for us to have during the winter months.

The Old Spanish Trail ran in front of the Old Mt. Pleasant Church in Gadsden County. The road ran just in front of Mr. Charlie Whiddon’s store, on past Oak Grove Church, on past our house, and straight on to the Wood Place. Crick Grubb bought the Wood Place, so from then on it was called the “Poor Farm”. At the Wood Place, you left the Old Spanish Trail and turned on a side road and came to Mt. Pleasant, past the church, the Grubb Bros. Store, past Mr. Charlie Bevis’ store (he was our “clock fixer”) and his store was the voting place for years. The road went through the Gilbourn pines (the reason the Buster Porch and the Tillman Porch families came to Mt. Pleasant was to cut the Gilbourn pines – that was beautiful timber). Then the road went just north of the railroad track. At the Hough place, you got back on the Old Spanish Trail and on to Gritna (later called GREINA). These were dirt roads and you drove in the ruts. Talking about RUTS – I don’t remember this ride, but I do remember Mama telling this tale. We all went with Daddy to the Post Office and Mama wanted to go out to “Hubbards” – (they lived at the Glen Julia Farm about two miles south of Mt. Pleasant). Well, Daddy started the car with Mama under the wheel and she held the car IN THE RUTS until we got to the Hubbards and she choked it down to stop the car. When we got ready to leave, Uncle Frank started the car, jumped out and Mama HELD IT IN THE RUTS all the way back to

the “General Store”. That trip was the extent of Mama’s driving.

FEATURE ARTICLE

Between 1905 and 1917, Floridians and visitors registered automobiles from over 300 distinct manufacturing companies in a variety of models and styles. From the Early Auto Registrations 1905-1917, found in the State of Florida Archives, the record books in this collection provided space for the registrar to note the "style" of the vehicles being registered. The registrar's interpretation of "style" varied; in some cases he or she noted a specific model name for the vehicle, while in other instances a more general style of vehicle was listed.

The touring car was one of the most common styles of automobile in the early decades of the 20th century. Nearly every auto manufacturer offered a vehicle in this style. Touring cars generally were denoted by an open body seating four or more people.

Runabouts were one of the earliest varieties of automobiles, often referred to as "horseless carriages." They were typically characterized by a lack of doors, weatherproofing, or windshield. The engine was generally located underneath the seat, and in many cases it was powered by electricity.

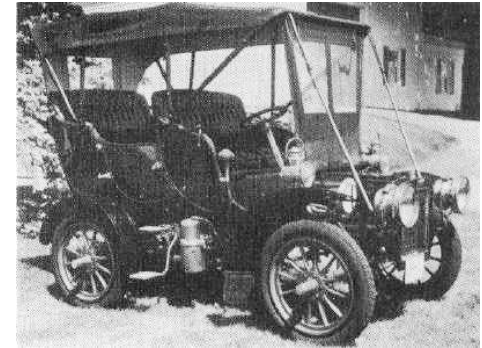
Truck manufacturers generally advertised their vehicles according to their pulling capacity in tons. Some were fitted with special attachments such as tiltable beds.

Manually propelled bicycles had just become popular when the automobile came onto the scene at the end of the 19th century. The early motorcycle grew out of an attempt to merge the power of the automobile with the personal freedom and maneuverability of the bicycle.

While the following pictures are not the actual vehicles owned by Mr. Davidson, American Sumatra Tobacco Company or Mr. Green, what would an article be without pictures! Enjoy the following list of Gadsden County registered owners. We know that many more residents owned vehicles during this time period, but obviously their automobile’s records were not registered at the State level. We hope

you find a family member! These records are handwritten and have been transcribed as accurately as possible.

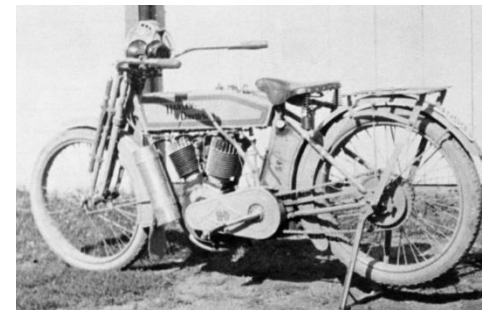
The first automobile registered in Gadsden County was recorded 31-Jul-1906 and is described as a Cadillac Model M it was owned by W. H. Davidson of Quincy.



The first truck registered in Gadsden County was recorded 4-Mar-1917, and is described as a 3/4 ton Republic owned by the American Sumatra Tobacco Company.



The first motorcycle registered in Gadsden County was recorded 30-May-1913 and was described as a 7991-B Harley Davidson owned by Ralph W. Green of Chattahoochee.



| Date | Registration No. | Style of Vehicle | H.P. | Factory No. | Makers Name | Owner | Address | Occupation (as researched by WGHS) |
|-----------|------------------|------------------|-------|-------------|---------------------------|---|----------------|------------------------------------|
| 31-Jul-06 | 240 | Model M | 10 | 2833 | Cadillac Motor Co. | W. H. Davidson | Quincy | Druggist |
| 2-Aug-06 | 241 | Style E | 10 | 345 | Cadillac Motor Co. | Dr. I. W. Martin | Quincy | Physician |
| 10-Aug-06 | 244 | Buckboard | 4 | 549160 | Waltham Mfg. Co | W.S. Synder | Quincy | House Builder – Contractor |
| 5-Dec-06 | 281 | Cadillac | 10 | --- | Cadillac Motor Co. | W.H. Carr | Quincy | Architect |
| 5-Dec-06 | 282 | Olds | 7 | 17000 | Oldsmobile Motor Co. | W.H. Carr | Quincy | Architect |
| 28-Dec-06 | 303 | Runabout | 12 | 7823 | Autocar Co. | John L. McFarlin | Quincy | Dealer of Leaf Tobacco |
| 4-Feb-07 | 330 | Runabout | 14 | 2227 | Maxwell Briscoe Co. | Rudolph Getzlaf | Quincy | General Manager Tobacco Farm |
| 2-Jul-07 | 383 | Cadillac | 10 | 8063 | Cadillac Motor Co. | A. L. Wilson | Quincy | Store Merchant |
| 2-Jul-07 | 384 | Light Touring | 25 | 1015 | Buick Motor Car Co. | P. L. Sutherland | Quincy | Manager of Lumber Co. |
| 2-Jul-07 | 385 | Touring | 16\25 | 7123 | Reo Motor Car Co | Mrs. P.L. Sutherland | Quincy | Wife of Lumber Co. Manager |
| 8-Nov-07 | 448 | Touring | 22 | 6633 | Buick Motor Car Co. | Owl Commercial Co W. M. Corry Gen. Mgr. | Quincy | Raising and Selling Tobacco |
| 16-Nov-07 | 449 | Touring | 35 | Model F | Mitchell Motor Car Co. | Rudolph Getzlaf | Quincy | General Manager Tobacco Farm |
| 6-Jan-08 | 494 | not given | 18 | 4126 | Ford Motor Co. | W. H. Carr | Quincy | Architect |
| 6-Aug-08 | 610 | Runabout | 12 | 7349 | Autocar Co. | D. E. Wetherley | Quincy | Farm Superintendent |
| 7-Jan-09 | 744 | Touring | 30 | 32361 | Cadillac Motor Co. | Max Wedeles | Quincy | Grows & Sells Tobacco |
| 19-Mar-09 | 857 | Runabout | 10 | 8693 | Cadillac Motor Co. | M.B. Baggs | Quincy | Wholesale Produce |
| 11-May-09 | 924 | Touring | 18-20 | 7097 | Buick Motor Co. | R.F. Godard | Quincy | Physician |
| 12-May-09 | 926 | Model T | 20 | 1837 | Ford Motor Co. | C.C. Mack | Quincy | Optometrist |
| 25-Jun-09 | 990 | Roadster | 20-22 | 20669 | Reo Motor Car Co. | B. F. Barnes | Chattahoochee | Physician |
| 24-Sep-09 | 1108 | Tourabout | 22 | 8882 | Ford Motor Co. | William Kahn | Hinson | Cigar Dealer |
| 4-Oct-09 | 1114 | Touring | 30 | 9359 | Maxwell Briscoe Co. | E. W. Scarborough | Chattahoochee | Store Merchant |
| 8-Nov-09 | 1162 | Touring | 20 | 8888 | Ford Motor Co. | Wm. M. Corry | Quincy | Raising and Selling Tobacco |
| 15-Dec-09 | 1256 | Touring | 20 | 690 | Buick Motor Car Co. | O.H. Locklin | River Junction | Railroad Conductor |
| 12-Feb-10 | 1426 | Touring | 20 | 152 | Ford Motor Co. | L.H. Sanders | Chattahoochee | Rural Mail Carrier |
| 15-Apr-10 | 1631 | Touring | 30 | 21021 | Cadillac Motor Co. | Francis Phillips | Quincy | Physician |
| 25-Apr-10 | 1656 | Model 16 | 30 | 4267 | Buick Motor Car Co. | Florida Tobacco Co. | Quincy | |
| 25-Apr-10 | 1657 | Model 16 | 30 | 3401 | Buick Motor Car Co. | American Sumatra Tobacco Co | Quincy | |
| 25-Apr-10 | 1660 | Model 17 | 30 | 3502 | Buick Motor Car Co. | A.L. Wilson | Quincy | Store Merchant |
| 3-Aug-10 | 1919 | 1910 Model | 30 | 15341 | E-M-F Co. | Charles Eddy | Quincy | Manufacturer |
| 22-Aug-10 | 1952 | 4 passenger | 30 | 4339 | Regal Motor Co | O. W. Pittman | Quincy | Barber |
| 24-Sep-10 | 2034 | Runabout | 10 | 1206 | Brush Runabout Co. | J.B. Bush | River Junction | Pool Room Proprietor |
| 29-Sep-10 | 2042 | Runabout | 10 | 8530 | Brush Runabout Co. | J.H. McDonald | River Junction | Bank Cashier |
| 25-Oct-10 | 2108 | Runabout | 10 | 5632 | Brush Runabout Co. | M.M. Hale | River Junction | Telegraph Operator |
| 16-Jan-11 | 2474 | Model T | 20 | 4969 | Ford Motor Co. | S.E. Clinard | Gretna | Physician |
| 2-Feb-11 | 2573 | Touring | 30-35 | 6689 | Buick Motor Car Co. | J.G. Sharon | Quincy | President of Tobacco Co. |
| 3-May-11 | 3029 | Torpedo | 20 | 37527 | Ford Motor Co. | Ralph N. Green | Chattahoochee | Machinist |
| 8-Jul-11 | 3354 | Touring | 40 | 70372 | Oldsmobile Motor Co. | Florida Yellow Pine | Gretna | |
| 26-Jul-11 | 3418 | 4 passenger | 25 | 32142 | Overland Motors | A.H. Edwards | River Junction | Store Merchant |
| 6-Sept-11 | 3568 | Roadster | 20 | 58989 | Ford Motor Co. | H.B. McEuen | Chattahoochee | Physician |
| 20-Sep-11 | 3610 | Roadster | 20 | 63758 | Studebaker Automobile Co. | W.B. Godard | River Junction | Physician |
| 7-Oct-11 | 3675 | Runabout | 20 | 54197 | Ford Motor Co. | Gadsden County Tobacco Co. | Quincy | |
| 27-Nov-11 | 3938 | Touring | 20 | 81339 | Ford Motor Co. | T.J. Edwards | Chattahoochee | Store Merchant |
| 13-Dec-11 | 4059 | Touring | 30 | 592303 | Overland Motors | D.M. Hinson | Hinson | Farmer |
| 6-Jan-12 | 4243 | Roadster | 30 | 85264 | Maxwell Briscoe Co. | W.H. Ide | Quincy | Farmer |
| 29-Feb-12 | 4629 | Touring | 30 | 848 | Buick Motor Car Co. | Max Wedeles | Quincy | Grows & Sells Tobacco |
| 14-Mar-12 | 4703 | Touring | 30 | 7989 | Cadillac Motor Co. | J.W. Mahaffey | Gretna | Farmer |
| 27-Mar-12 | 4769 | Model 21 | 40 | B-259 | Haynes Automobile Co. | American Sumatra Tobacco Co | Quincy | |
| 14-Apr-12 | 4836 | Overland | 30 | 595282 | Overland Motors | Oscar Altschul | Quincy | Tobacco Farmer |
| 12-Jun-12 | 5136 | Mitchell | 30 | 118725 | Mitchell Motor Car Co. | E.B. Shelfer | Quincy | Merchant of Fertilizer |
| 18-Jul-12 | 5316 | Model T | 20 | 122762 | Ford Motor Co. | W.R. Lambert | Quincy | Farmer |
| 7-Aug-12 | 5411 | 5 passenger | 20 | 116959 | Ford Motor Co. | A.N. Hubbard | Mt. Pleasant | Tobacco Farm Manager |
| 16-Sep-12 | 5608 | 4 passenger | 30 | 9393 | Maxwell-Briscoe Co. | J.F.B. Connell | Concord | Retail Merchant |

| Date | Registration No. | Style of Vehicle | H.P. | Factory No. | Makers Name | Owner | Address | Occupation (as researched by WGHS) |
|-----------|------------------|------------------|---------|-------------|---------------------------|------------------------------|----------------|-------------------------------------|
| 29-Oct-12 | 5777 | Touring | 32 | 29134 | Hupp Motor Car Co. | B. F. Barnes | Chattahoochee | Physician |
| 4-Jan-13 | 7114 | Roadster | 30 | A-37864 | E-M-F Co. | A.E. Couter | Chattahoochee | Physician |
| 13-Mar-13 | 7813 | Touring | 20 | 177028 | Ford Motor Co. | J.L. Sunday | Chattahoochee | Farmer |
| 28-Apr-13 | 7971 | Touring | 22 | 477024 | Ford Motor Co. | Sol Friedman | Quincy | Farm Manager |
| 30-May-13 | 8115 | Motor Cycle | 8 | 7991-B | Harley Davidson, Inc. | Ralph W. Green | Chattahoochee | Machinist |
| 5-Jun-13 | 8146 | Touring | 32 | 32588 | Hupp Motor Car Co. | M.L. Glenn | Quincy | Housewife of a Farmer |
| 25-Jul-13 | 8393 | Model 30 | 30 | 7487 | Buick Motor Car Co. | American Sumatra Tobacco Co. | Quincy | |
| 2-Oct-13 | 8598 | Runabout | 20 | 309583 | Ford Motor Co. | M.B. Bates | Quincy | General Manager Hardware Store |
| 10-Oct-13 | 8646 | Roadster | 20 | 215984 | Ford Motor Co. | Dr. W.B. Godard | River Junction | Physician |
| 15-Oct-13 | 8671 | 2 Passenger | 32 | 38245 | Hupp Motor Car Co. | H.B. McEuen | River Junction | Physician |
| 11-Nov-13 | 8824 | Runabout | 20 | 347397 | Ford Motor Co. | W. Woodbury | Quincy | Farmer |
| 11-Nov-13 | 8823 | Touring | 35 | 7626 | Overland Motors | W.H. Ide | Quincy | Tobacco Leaf Dealer |
| 9-Dec-13 | 8970 | 2 Passenger | 32 | 39065 | Hupp Motor Car Co. | Ralph W. Green | Chattahoochee | Machinist |
| 22-Dec-13 | 9054 | Motor Cycle | 5 | 1883D | Harley Davidson, Inc. | A.K. Gholson | Chattahoochee | General Farm Salesman |
| 20-Jan-14 | 9277 | 13-Ford | 30 | 186482 | Ford Motor Co. | J.B. Bush | River Junction | Constable |
| 26-Feb-14 | 9543 | Touring | 20 | 369190 | Ford Motor Co. | James A. Colson | River Junction | Train Locomotive Engineer |
| 3-Mar-14 | 9565 | Touring | 20 | 110680 | Ford Motor Co. | T.J. Cook | Havana | Garage Owner |
| 20-Mar-14 | 9627 | Roadster | 20 | 215972 | Ford Motor Co. | R.H. Gee | Quincy | Real Estate Dealer |
| 23-Mar-14 | 9632 | Electric | 35 | 13090 | Overland Motors | R.I. Stephens | Quincy | Coca Cola Bottler and Distributor |
| 9-Apr-14 | 9728 | Touring | 20 | 177031 | Ford Motor Co. | W.S. Crofton | Quincy | Tobacco House Superintendent |
| 21-Apr-14 | 9764 | Touring | 20 | 347507 | Ford Motor Co. | J.H. Trump | Quincy | Pecan Grower and Real Estate Dealer |
| 24-Jun-14 | 10036 | Touring | 20 | 317398 | Ford Motor Co. | Palmer Sylvester | Hinson | Farmer |
| 8-Aug-14 | 10252 | Touring | 20 | 437350 | Ford Motor Co. | C.S. Sims | River Junction | Farm Foreman for State Hospital |
| 7-Sep-14 | 10363 | Touring | 20 | 103763 | Ford Motor Co. | C.V. Pinson | Quincy | Telephone |
| 7-Sep-14 | 10364 | Touring | 20 | 470155 | Ford Motor Co. | C.V. Pinson | Quincy | Telephone |
| 8-Sep-14 | 10366 | Touring | 20 | 344055 | Ford Motor Co. | J.W. Southall | Quincy | Telephone Manager |
| 19-Sep-14 | 10406 | Touring | 20 | 522479 | Ford Motor Co. | T.J. Cook | Havana | Garage Owner |
| 23-Sep-14 | 13434 | Roadster | 20 | 203512 | Ford Motor Co. | J.G. Ball | Quincy | Hardware Store Manager |
| 8-Oct-14 | 10510 | Touring | 35 | 6141 | Overland Motors | Dr. J.C. Davis | Quincy | Physician |
| 12-Oct-14 | 10533 | Touring | 20 | 126626 | Ford Motor Co. | Mrs. E.F. Taylor | River Junction | |
| 20-Oct-14 | 10639 | Touring | 20 | 482455 | Ford Motor Co. | D.P. Hinson | Hinson | Farmer |
| 20-Oct-14 | 10640 | Touring | 20 | 578803 | Ford Motor Co. | J.Q. Williams | River Junction | Works with Railroad |
| 6-Jan-15 | 11399 | Touring | 35 | 108742 | Buick Motor Car Co. | Rudolph Getzlaf | Jamieson | General Manager Tobacco Farm |
| 4-Feb-15 | 11633 | Touring | 20 | 522488 | Ford Motor Co. | Allie W. McIntosh | Quincy | Tobacco Dealer |
| 6-Mar-15 | 11797 | Touring | 20 | 533138 | Ford Motor Co. | W.J. Boynton | Havana | Operator of Turpentine Still |
| 11-Mar-15 | 11834 | Roadster | 25 | 1577 | Buick Motor Car Co. | E.C. Love | Quincy | Lawyer |
| 11-Mar-15 | 11828 | Touring | 20 | 161999 | Ford Motor Co. | I.F. Shepard | Mt. Pleasant | Owner and manager of Retail Store |
| 15-Mar-15 | 11914 | Touring | 20 | 369193 | Ford Motor Co. | Charles Conboy | Quincy | Owner and manager of Jewelry Store |
| 24-Mar-15 | 11889 | Touring | 20 | 624497 | Ford Motor Co. | J. Marion Stafford | Quincy | Preacher |
| 30-Apr-15 | 12137 | Touring | 30 | 55642 | Hupp Motor Car Co. | S.W. Anderson | Greensboro | Bank President and Farmer |
| 22-Sep-15 | 12597 | Touring | 45 | 146097 | Buick Motor Car Co. | Charles Conboy | Quincy | Owner and Manager of Jewelry Store |
| 16-Dec-15 | 12903 | Touring | 20 | 988286 | Ford Motor Co. | N.C. Bell | Quincy | President of Hardware Store |
| 10-Mar-16 | 13235 | Touring | 50 | 639078 | Studebaker Automobile Co. | American Cigar Co. | Quincy | |
| 22-Mar-16 | 13434 | Roadster | 20 | 203512 | Ford Motor Co. | J.G. Ball | Quincy | Hardware Store Manager |
| 24-Aug-16 | 13707 | Touring | 20 | 1325235 | Ford Motor Co. | L.H. Sanders | Chattahoochee | Physician Coroner |
| 4-Mar-17 | 15515 | Truck | 3/4 ton | 502 | Republic Motor Truck Co. | American Sumatra Tobacco Co | Quincy | |
| 4-Mar-17 | 15514 | Touring | 22 | 1722953 | Ford Motor Co. | American Sumatra Tobacco Co | Quincy | |
| 4-Apr-17 | 15164 | Touring | 35 | 20531 | Saxon Motor Car Co. | J.H. Trump | Quincy | Pecan Grower and Real Estate Dealer |

**WEST GADSDEN HISTORICAL SOCIETY, INC.
2015 ANNUAL REPORT**

Our Mission Statement: To preserve the history of Gadsden County, emphasizing the western area.

Our Accomplishments: Our historical collections continue to grow keeping your Board busy cataloging and preparing items for display. Visitation to the Greensboro Depot Railroad Museum is somewhat sporadic, which is disappointing. We would like to keep the Museum open more, but we do not have the volunteers willing to keeping it open. Any suggestions to help this situation would be welcome. The hours of operation remain 1:00 - 4:00 p.m. on the first & last weekends of each month. MLD Architects prepared the drawings and construction documents, and contractors bid on the Dezell House Restoration Project in February, 2016. The bid was awarded and work began in March; however, it has come to a stand-still due to the time to get advances on the grant money from the Florida Bureau of Historic Preservation. Our financial outlook has improved. We thank everyone who loyally supports WGHS with your contributions and historical collections. If you have an interest in joining our Board of Directors, please call 850-442-6434 and I would be glad to talk with you about this terrific opportunity to serve the organization and the community.

Officers & Directors:

Lynne L. Poucher, President
Rosalyn F. Fenn, Treasurer
Ricky Brandon

Jane Wagner Clark, Vice-President
Linda C. Smith, Secretary

John W. B. Canetta
Ellen S. Clark
Dale Cox, Honorary

**INCOME STATEMENT
as of December 31, 2015**

INCOME:

| | |
|---------------------------|--------------|
| Donations | \$ 18,605.00 |
| Dues | 6,000.00 |
| Sales | 592.83 |
| Dividends & Interest | 211.19 |
| Grant Income-Dezell House | 9,650.00 |

TOTAL INCOME \$ 35,059.02

EXPENSES:

Administration:

| | |
|---------------------------|--------|
| Taxes, Licenses & Permits | 112.38 |
| Bank Charges | 65.00 |
| Fundraising: | 177.38 |
| Postage & Sales Tax | 53.32 |

Programs:

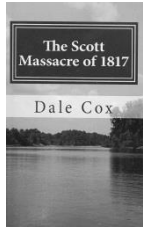
| | |
|-------------------------------|---------------------|
| Newsletter Expenses | 890.18 |
| Museum Exhibits/Furnishings | 1,266.66 |
| Supplies-Meetings & Events | 566.53 |
| Insurance | 2,549.42 |
| Telephone, Internet & Website | 976.86 |
| Utilities | 2,726.87 |
| Dezell House Restoration | 3,487.00 |
| TOTAL | 12,463.52 |
| EXPENSES | \$ 12,694.22 |

NET PROFIT \$ 22,364.80

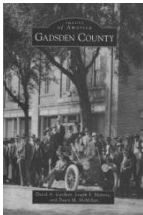
As of 12-31-15, the value of WGHS assets totaled \$206,034.29. Includes cash, stocks, the Dezell House located on three lots and improvements made to the Dezell House, the Greensboro Depot Railroad Museum with the Patricia Fletcher Vice Meeting Facility located on a .33 acre lot.

Prepared by: Lynne L. Poucher, President

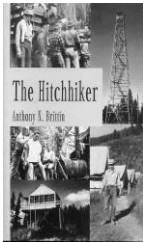
BOOKS & MERCHANDISE
All prices include 7.5% FL Sales Tax



Scott Massacre
\$22.00



Images of Gadsden Co.
\$23.00

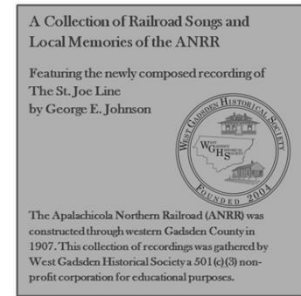
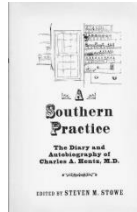


Dr. Hentz Diaries
\$50.00

The Hitchhiker
\$23.00



Gadsden Co. Early History
\$27.00



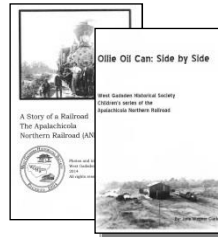
and recorded by local WGHS members and recall memories of the Apalachicola Northern Railroad (ANRR) - \$20.00 DONATION

CHILDRENS BOOKS

A Story of a Railroad – The Apalachicola Northern Railroad

Ollie Oil Can: Side by Side

Sold As a Set \$5.00



WGHS presents this collection of narrative tracks, old railway song recordings and an original song and recording *The St. Joe Line* by Gadsden County's own George E. Johnson. Narrative tracks were performed



Note Cards

Greensboro Depot, Barns, Dezell House or Greensboro School. Sold in sets of 8 - \$10.00



Gadsden: Florida County In Word And Picture – 1976, Miles Kenan Womack Jr.
This book sells for \$150-\$185 on the internet; we have 3 copies available for \$100 each.
Purchase yours today!

OUR DONORS
Other than Memberships, Memorials & Honorariums
6/17/15 - Present

MEMORIALS & HONORARIUMS
4/15/16 – 6/17/16

DONATION LEVELS

| | |
|-----------------|----------------------|
| Heritage Circle | \$25,000 - and above |
| Legacy Builders | 15,000 to 24,999 |
| Patrons | 10,000 to 14,999 |
| Founders | 5,000 to 9,999 |
| Explorers | 2,500 to 4,999 |
| Trailblazers | 1,000 to 2,499 |
| Homesteaders | 500 to 999 |
| Settlers | 250 to 499 |
| Pioneers | 100 to 249 |
| Friends | up to 99 |

LEGACY BUILDERS

Lynne Layton Poucher

EXPLORERS

Adrian C. Fletcher & Annie Muriel Fletcher Foundation, Inc.

SETTLERS

Melvin L. & Carol L. Miller

PIONEERS

James Harold Thompson
Richard B. VanLandingham
Joe Ann Hansford
Mark W. & Patsy Bates
Tillie S. Tice
Joyce V. Roach

FRIENDS

Laura Kammerer
Jean S. Demma
R. Patrick & Holly M. Elliott
Howard G. Smelt
Coastal Seafood Restaurant
Wilson & Tee Hinson
Nadine P. Standland
Betty Fletcher Eppes
Gene & Gaile K. Bass
Nettie Bentley
John Eubanks

MEMORIALS

Linda Jemison Smith
Rosalyne Fletcher Fenn
in memory of
Linda Butler Clark

Joyce V. Roach
Amy L. Roach
Alan Roach
in memory of
Martha Mae Roach
McPherson Plant

Layton Bookkeeping Service
 Adrian C. Fletcher & Annie
 Muriel Fletcher Foundation, Inc.
 Patricia B. Anderson
 Shari Richardson Arrington
 Midge Howell Askew
 Ann Blount
 Evie Blount
 Ricky Brandon
 Janet Fletcher Bridges
 Helen Clark Brittin
 Anthony N. Brittin
 J. Mulder Brown
 Ken L. Bryant
 Virgil H. Butler
 Angela Boynton Cassidy
 B. Scott Clark
 Jane Wagner Clark
 Ellen Sunday Clark
 Allen Clark

Shirley T. Clark
 Dale Cox
 Jean Ogilvie Dean
 Lori Ann Dezell
 Lisa Susan Dezell Hood
 James R. Dezell, Jr.
 James R. Dezell, Sr.
 J. Everitt Drew
 Marcia W. Fenn
 Rosalyn Fletcher Fenn
 Samuel J. Fenn
 David E. Ferro
 H. Max Fletcher, Sr.
 Marcia Dezell Gilbert
 Joe Ann Hansford
Marian "Tee" Munroe Hinson
E. Wilson Hinson, Jr.
 Suzanne Fletcher Hood
 Pollie J. Howell
 Avery Daniel Layton

LIFETIME MEMBERS *(New Members are Italized)*

Charlie M. Macon
 Peggy P. Mason
 Judith S. Maxwell
 Stewart Parsons
 Eva Mae Whittle Peters
 Sam Pickett
 Patricia Jean Pitts
 Richard W. Pohlman
 Lynne Layton Poucher
 Charles Allen Poucher
 Peter W. Prugh
 Thomas J. Rabon
 Amber L. Rabon
 Johnathon D. Rabon
 Amy Leann Roach
 Joyce VanLandingham Roach
 Donnie H. Roberts
 Dr. Jim L. Rodgers
 Anne Sansom
 Ruth Brown Sansom

Victor R. Silvestri
 Isaac Simmons, Jr.
 Mary P. Smith
 J. Russell Smith
 Thomas B. Smith
 Adelaide Munroe Suber
 Mary Ann J. Thomas
 Gregory Thompson
 Richard L. Thompson
 Tillie S. Tice
 Clay VanLandingham
 Mari VanLandingham
William R. VanLandingham
 William Vice
 Carolyn Earnest White
 Thad White, Sr.
 W. Oziel Whittle

Lota Griffith Smith Coffel*
 Margaret Edwards Cooksey*
 Spurgeon S. Cowen*
 Mary Barber Cox*
 Dr. J. Kenneth Davis*
 Howard V. Fletcher*
 Kathryn McFarlin Fletcher*
 Jack Freeman*
 Sondra Lee Green*
 Laura A. Kammerer*
 Kay Davis Lay*
 Devane Mason*
 Evelyn Pickett*
 William K. "Buddy" Pitts*
 Edward R. Sansom*
 Patricia Fletcher Vice*
 Julia Munroe Woodward*

*Deceased

CURRENT MEMBERSHIP ROLL Yearly memberships expire January 1 *(New Members are Italicized)*

Faye H. Alcorn
 Robert H. Alcorn, Jr.
 Karen Alday-Henderson
 Sandra G. Andrews
 Michael E. Allen
 Anna Lois Clark Antemann
 Gaile Bass
 Gene Bass
 Mark W. Bates
 Patsy Bates
 Nettie Bentley
 Jane F. Bodiford
 Saradee Davis Bowen
 Debra Brandon
 Holden Brandon
 Ann Clark Bryant
 Gary C. Bryant
 John W. B. Canetta
 Patsy Smith Canetta
 Shirley H. Chester
 Bill (William Evans) Clark
 Effie T. Clark
 Lamar A. Clark
 Susan L. Clark

Frances Cook
 Lila Dolan Corbin
 Carol Jean Crawford
 Richard W D'Alemberte
 Rev. Harold Dean
 Jeannie Suber Demma
 Annis C. Dominey
 J. R. Dominey
 Betty Jayne Solomon Edwards
 H. Marcus Edwards
 Jean P. Edwards
 Mary Katherine Edwards
 Ollie B. Edwards
 R. D. Edwards
 Rick Edwards
 Holly M. Elliott
 R. Patrick Elliott
 Wilson Enfinger
 Betty Fletcher Eppes
 John Eubanks
 Mack Eubanks
 Sandie Eubanks
 Carole N. Fletcher
 Duncan Fletcher

T. Bert Fletcher, III
 Betty Owens Goza
 Mitchell S. Green
 Emily Higdon
 John B. Higdon, Jr.
 Susan Clark Hinton
 George E. Johnson
 Carol Wagner Johnston
 Ella Kennedy
 Wilford Kennedy
 Howard M. Kinch, Jr.
 Bascom Logan Mahaffey
 Betty Timmons Mahaffey
 Crystle May
 Myrt Mayne
 Barbara Davidson McClellan
 William Hugh McKeown
 Carol L. Miller
 Melvin L. Miller
 Susan Howell Mills
 Gene Morgan
 Marguerite Morgan
 Betty Mulford
 Kimble Mulford

Joseph Frank Munroe
 Barbara Murray
 Eleanor Haire Puckett
 Janice L. Register
 Ed Richards
 Emily Rowan
 Eudene Crosby Rowan
 Franklin Rowan
 Gladys E. Rowan
 Jim F. Rowan
 Harold M. Rudd
 Michael J. Shepard
 Virginia D. Singleton
 John Allen Smith, Jr
 Linda Clark Smith
 Linda Jemison Smith
 Erline Haire Spooner
 Mary W. Spooner
 Carol Jolley Spurlin
 Nadine Peacock Standland
 Kathleen Stewart
 Harvey Sweeney
 Jeanette Sweeney
 Martha S. Taylor

James Harold Thompson
 Mary Alice Timmons Tiller
 Ken W. Vargas
 Kim Rowan Vargas
 Donna Warlick
 Bill Willis
 Patsy Willis
 Dr. Pat M. Woodward
 Mary Jane Woodward

BUSINESS MEMBERS
 Capital City Bank-Gadsden
 Charles McClellan Funeral Home,
 Inc.
 Hinson Oil Company
 Talquin Electric Cooperative, Inc.
 TDS Telecom-Quincy Telephone
 Company

ORGANIZATIONAL MEMBERS
 Chattahoochee Main Street