



by Honeywell

# Velociti® Series

## AMM-4SF

### Description

The Gamewell-FCI Velociti® Series, addressable monitor module AMM-4SF features a single Style D, Class A initiating device circuit. It may also be configured as a Style B, Class B initiating circuit with end-of-line resistor. This module provides an address for a group of conventional 2-wire smoke detectors.

Any alarm initiating devices with normally open (N.O.) dry contacts, such as heat detectors, linear heat detection devices, projected beam smoke detectors, 4-wire smoke detectors, water flow switches, tamper switches, manual stations, etc. may also be installed in this circuit.

The Velociti® Series use a communication protocol that substantially increases the speed of communication between the sensors and certain Gamewell-FCI analog addressable fire alarm controls. These devices operate in a grouped fashion. If one of the devices in the group has a status change, the panel's microprocessor stops the group poll and concentrates on the single device. The net effect is response speed up to five times greater than earlier designs.

The AMM-4SF module is designed for installation in the signaling line circuit of any Gamewell-FCI analog addressable control panel. The signaling line circuits of Gamewell-FCI analog addressable panels are designed to accommodate up to 159 monitor modules per circuit.

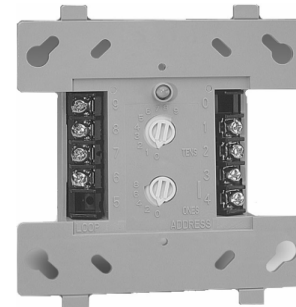
The initiating device circuit of the AMM-4SF can support a maximum line resistance of up to 25 ohms allowing the use of linear heat detection devices. This allows the module to stay in alarm with one smoke detector activated. The AMM-4SF is designed to mount in a 4" square box 2 1/8" deep.

### Ordering Information

Model	Description
AMM-4SF	Addressable monitor module, single circuit, Style D, Class A

Velociti® and E3 Series® are registered trademarks of Honeywell International Inc.

### Addressable Monitor Module



AMM-4SF

### Features

- Accommodates up to twenty (20), conventional 2-wire smoke detectors. (See the Gamewell-FCI Compatibility Addendum P/N 9000-0427 for supported detectors)
- Class A, Style D, or Class B, Style B initiating circuit
- 25 ohm line resistance for each initiating device circuit
- Visual rotary, decimal switch addressing (01-159)
- Accommodates any N/O dry contact device
- Compact size allows easy installation
- Bicolor LEDs flash green whenever the module is addressed, and light steady red on alarm\*

\*Note: Only the red LED is operative in panels that do not operate in Velociti® mode.

### Specifications

Supervisory current:	.00027 amps. (LED flashing)
Alarm current:	.0051 amps. (LED lit)
Operating temperature:	32° to 120° F (0° to 49° C)
Relative humidity:	10 to 93% (non-condensing)
Dimensions:	4 1/2" L x 4" W x 1 1/4" D (11.4 x 10.2 x 3.2 cm)
End-of-line resistor:	3.9 K ohms

SIGNALING



LISTED  
S1949



APPROVED  
3023594

MEA  
Approved



227-03-E Vol. IV 7300-1703:0122



### GAMEWELL-FCI

12 Clintonville Road, Northford, CT 06472-1653 USA • Tel: (203) 484-7161 • Fax: (203) 484-7118

Specifications are for information only, are not intended for installation purposes, and are subject to change without notice. No responsibility is assumed by Gamewell-FCI for their use.

©2013 Honeywell International Inc. All rights reserved.

[www.gamewell-fci.com](http://www.gamewell-fci.com)

9020-0630 Rev. E page 1 of 1