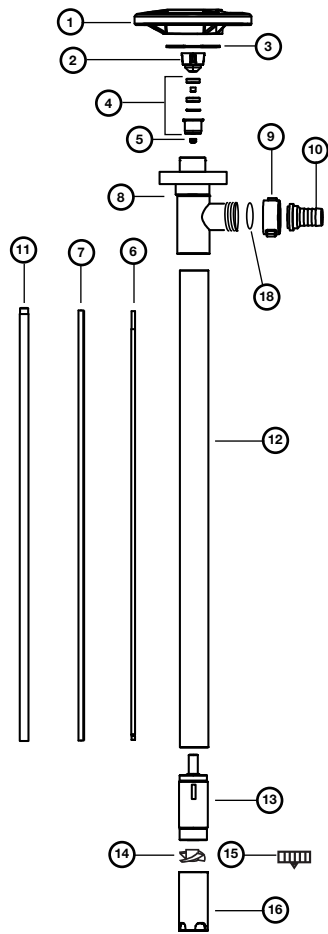


**Industrial Drum Pumps Models:
SP-PP, SP-PHT, SP-CPVC, SP-PVDF**

SP-PP, SP-PHT, SP-CPVC, SP-PVDF Spare Parts List



Ref. Number	Description	P/N for SP-PP	P/N for SP-PHT	P/N for SP-CPVC	P/N for SP-PVDF	Qty
1	Hand Wheel, Polypropylene	1842	1842	1842	1842	1
2	Pump Coupling, Nylon	1004*	1004*	1004*	1004*	1
3	Snap Ring, Steel	1508	1508	1508	1508	1
4	Bearing Unit Assembled – 2 each Viton shielded bearings, spacer, snap ring, bearing can	1038*	1038*	1038*	1038*	1
5	V-Seal, Viton®	1000	-	-	-	1
	V-Seal, PTFE	-	4000	4000	4000	
6	Drive Shaft, Hastelloy					
	27" (700 mm)	1543	1543	1543	1543	1
	39" (1000 mm)	1544	1544	1544	1544	1
	47" (1200 mm)	1545	1545	1545	1545	1
	50" (1270 mm)	1549	1549	1549	1549	1
	60" (1500 mm)	1546	1546	1546	1546	1
	72" (1800 mm)	1547	1547	1547	1547	1
7	Guide Sleeve, PTFE					
	27" (700 mm)	1516	1516	1516	1516	1
	39" (1000 mm), 47" (1200 mm), 50" (1270 mm)	1514	1514	1514	1514	
	60" (1500 mm), 72" (1800 mm)	1661	1661	1661	1661	1
8	Discharge Housing	1028	6028	5028	4028	1
9	Wing Nut	1106	6106	5106	4106	1
10	Hose Barb					
	.75" (19 mm)	1051	6051	5051	4051	1
	1" (25 mm)	1082	6082	5082	4082	1
11	Inner Tube,					
	27" (700 mm)	1600	6600	5600	4600	1
	39" (1000 mm)	1601	6601	5601	4601	1
	47" (1200 mm)	1602	6602	5602	4602	1
	50" (1270 mm)	1623	6623	5623	4623	1
	60" (1500 mm)	1615	6615	5615	4615	1
	72" (1800 mm)	1616	6616	5616	4618	1
12	Outer Tube,					
	27" (700 mm)	1604	6604	5604	4604	1
	39" (1000 mm)	1603	6603	5603	4603	1
	47" (1200 mm)	1605	6605	5605	4605	1
	50" (1270 mm)	1624	6624	5624	4622	1
	60" (1500 mm)	1617	6617	5617	4617	1
	72" (1800 mm)	1618	6618	5618	4619	1
13	Pump Housing (Includes Carbon Bushing)	1524*	6524*	5524*	4607*	1
14	High Volume Impeller, Polypropylene	1608*	6608*	5608*	4608*	1
15	High Pressure Impeller, PTFE	4608 HH	4608 HH	4608 HH	4608 HH	1
16	High Volume Pump Foot, Polypropylene	1609*	6609*	-	-	1
	High Volume Pump Foot, PVDF	-	-	5609*	4609*	1
	High Pressure Pump Foot, Polypropylene & PTFE	1609 HH	6609 HH	-	-	1
	High Pressure Pump Foot, PVDF & PTFE	-	-	5609 HH	4609 HH	1
17	Repair Kit (*Includes Items 2, 5, 10, 13, & 14)	9050	9053	9052	9051	1
18	O-Ring, Viton®	-	6695	-	-	1

SP-PP, SP-PHT, SP-CPVC, SP-PVDF pumps should not be used to pump flammables.