



# 2018 MINI PRODUCT CATALOG

## HD-COAX - IP - ACCESS CONTROL

[sales@eclipsesurveillance.com](mailto:sales@eclipsesurveillance.com)

[www.eclipsesurveillance.com](http://www.eclipsesurveillance.com)

*Eclipse Security is celebrating 20 years in business in 2018. Since 1998 Eclipse has been the go-to alternative for security products. Being family owned and operated allows us to offer a more personal approach to doing business. Eclipse has always stayed at the forefront of technology and has provided the best services possible. Now, more than ever, dealers are looking for alternative products. Eclipse is not only the alternative brand, we are the ALLternative when it comes to security, and we have been since 1998.*

All Eclipse Signature products are UL Listed and branded under the Eclipse Security name. Unlike OEM distributors who offer 3rd party UL certificates, our products are certified UL under the Eclipse brand name. Along with UL certification, we have over 1 million dedicated MAC addresses for our Eclipse Signature products. They are unique to our products so you know an Eclipse product is authentic when you do a MAC address search. Eclipse is celebrating 20 years in the surveillance market so you know its a brand you can trust.



## Eclipse Difference

- ✓ USA based cloud management servers. Hosted by Amazon.
- ✓ USA based tech support with a combined 50 yrs of surveillance experience.
- ✓ Factory direct sales to Integrators.
- ✓ API & SDK Support
- ✓ Eclipse is sold to dealers only, and only authorized dealers get our Seal.



## Signature Analytics

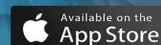
Eclipse Signature offers IP camera analytics with no license fee. We offer face detection, line crossing, perimeter intrusion detection, people counting, audio detection and camera blur detection.

Export people counting reports directly to your PC or set up push alerts when someone enters an area of concern. Our analytics work together with our NVRs so you can easily search any analytic event and get right to the playback.

## Signature Software

All of our Eclipse Signature products use Eclipse Software. Everything from the active-x drivers, CMS software, mobile apps and digital signatures are all Eclipse.

This assures that products will work hand in hand for the best possible performance. Our Windows and Mac CMS software is free of charge with your Signature purchase and we do not charge a license fee. Download our mobile apps today under the name Eclipse View.



## Did You Know?

- ✓ Eclipse products have been installed in major airports around the world.
- ✓ You can find our systems installed in thousands of retail stores and fast food restaurants.
- ✓ We work directly with 3rd party VMS software companies.
- ✓ Provide engineering support & quotes.
- ✓ We can ship directly from our factories in Asia.



# ECLIPSE SIGNATURE

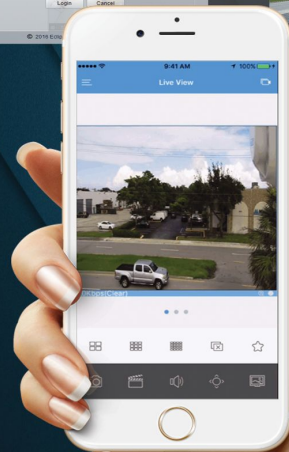
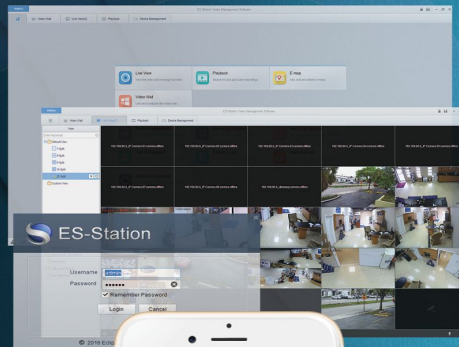
## SOFTWARE & NVR FEATURES

02

### The Alternative Brand

*Eclipse Signature offers the very latest in Network IP products. Since 1998 Eclipse has been selling and providing surveillance products worldwide.*

All Signature NVRs offer full CMS Software, and Cloud Management servers hosted in the USA. We also offer free mobile apps for both iOS and Android.



#### ONVIF

Third-party IP cameras supported with ONVIF conformance.



#### PLUG & PLAY

Support PnP for easy IP camera discovery and usage.



#### VCA -ANALYTICS

VCA is an intelligent video analysis function. VCA supports face detection, intrusion detection, cross line detection and people counting.



#### SMART SEARCH

Typical searching can take hours to find the desired video clip. With smart search, specify an interested area and perform a smart search, it only takes seconds to find the desired video clip.



#### LONG RANGE POE

Normal PoE distance is 100m, but with Signature NVRs and IP cameras, you can reach up to 300m of PoE transmission distance with Cat5E or Cat6.



#### CLOUD MANAGEMENT

The Eclipse View video service offers a superb mobile solution for managing and remote viewing IP cameras and NVRs.



#### ANR

When the connection between IPC and NVR is interrupted, IPC can store video in SD card. Then after reconnection, IPC can send the previous video back to NVR.



#### HIGHER SECURITY

We adopted different password security levels between LAN & WAN. The LAN allows a weak password, while the WAN uses a strong password. When a user logs in, it reminds the user to change a weak password. When changing the password, we will evaluate the new password strength.

# ECLIPSE SIGNATURE

## NETWORK VIDEO RECORDERS

### ESG-NVR64HR-16

64ch 16 SATA 4K NVR



Decoding: 4 x 4K@30, 16 x 1080p@30, 36 x 720p@30, 64 x D1  
Video Output: 1CH VGA, 2CH HDMI 4K Output  
Hard Drives: 16 SATA  
Audio Input: 1 RCA

### ESG-NVR32-8

32ch 8 SATA 4K NVR



Decoding: 4 x 4K@30, 8 x 4MP@20, 16 x 1080P@25, 32 x 720P@25, 32 x D1  
Video Output: 1CH VGA, 2CH HDMI 4K Output  
Hard Drives: 8 SATA  
Audio Input: 1 RCA

### ESG-NVR16P-4

16ch 4 SATA 4K NVR



Decoding: 4 x 4K@30, 8 x 4MP@20, 16 x 1080p@25, 32 x 720p@25  
Video Output: 1CH VGA, 2CH HDMI 4K Output  
Hard Drives: 4 SATA  
Audio Input: 1 RCA

**EXTENDED**  
**POE** Up to  
300 meters

### ESG-NVR16-4

16ch 1 SATA 4K NVR



Decoding: 1 x 4K@30, 3 x 4MP@20, 4 x 1080p@25, 8 x 720p@25, 16 x D1  
Video Output: 1CH VGA, 1CH HDMI 4K Output  
Hard Drives: 1 SATA  
Audio Input: 1 RCA  
Up to 8 Megapixels resolution recording

### ESG-NVR8P

8ch 1 SATA NVR



Decoding: 4 x 4MP@20, 8 x 720p@25 - 80Mbps  
Video Output: 1CH VGA, 1CH HDMI  
Hard Drives: 1 SATA  
Audio Input: 1 RCA  
Built In POE 8ch - 802.3AT

Complete Systems  
Available





# ECLIPSE SIGNATURE

IP Cameras

04



**ESG-IPBM4F3**  
3.6mm Lens - 98ft IR  
12VDC - POE

**ESG-IPDM4F2**  
2.8mm Lens - 98ft IR  
12VDC - POE

## 4MP IP FIXED LENS CAMERAS



**ESG-IPB4V2-Z**  
2.8-12mm Motozoom Lens  
98ft IR - 12VDC - POE

**ESG-IPD4V2-Z**  
2.8-12mm Motozoom Lens  
98ft IR - 12VDC - POE

## 4MP IP MOTOZOOM CAMERAS



**ESG-IPBN2V4-Z**  
4.7-47mm Motozoom Lens  
IR RANGE 328FT - POE - 12VDC

**ESG-IPB2V6-Z**  
6.5-143mm Motozoom Lens  
IR RANGE 656FT - AC24V

**ESG-IPBT4F4**  
4MP - 4mm Lens Pan & Tilt  
IR RANGE 164ft - POE - 12VDC

**ESG-IPDW4F2**  
4MP - 2.8mm Lens with Mic  
IR RANGE 49ft - POE - 12VDC  
WIDE ANGLE

Pan & Tilt

## Speciality Cameras



Fisheye

**ESG-IPF812**  
12MP - 1.8mm with IR Filter  
Panoramic - 24v - POE

**ESG-IPS233X-IRA**  
2MP - 4.5-148.5mm 33x Zoom  
IR RANGE 492ft - 24v DC/AC  
AUTOTRACKING

**ESG-IPT2F2**  
2MP - 2.8mm lens 98ft IR  
12v - POE

Economy Models

**ESG-IPS233X-LI**  
2MP - 4.5-148.5mm 33x Zoom  
IR RANGE 1640ft - 24v DC/AC  
LASER PTZ

**ESG-IPBM2F3**  
2MP - 3.6mm lens 98ft IR  
12v - POE

# PRO SERIES DVRs

## HD-COAX DVRs

### The ALTERNATIVE brand

*Selling the same branded products as everyone else is not good for business. Eclipse Pro Series offers better features at a competitive price point. All our products are Eclipse branded and backed by 20yrs of surveillance experience. We are the alternative brand.*

Our Eclipse Pro Series DVRs offer best in class recording for HD-Coax cameras. Full 5MP resolution recording with 4K video output and ONVIF IP camera support. Our Pro series DVRs support 5-1 multiplex cameras in various formats such as AHD/TVI/CVI/CVBS & IP.

We also offer a complete suite of software for use with PC, MAC, iOS, and Android that work seamlessly with P2P technology for quick remote video access with no setup.



AHD / TVI /  
CVI, / CVBS / IP

#### ECL-PRO4 5MP HYBRID DVR

Recording: 5MP : 10fps - 4MP / 3MP : 15 fps - 4MP  
lite/1080P/720P/WD1: 25 fps 30 fps  
Video Output: HDMI, VGA, BNC  
Hard Drives: 1 SATA  
Audio Input: 4  
Features: 4 TVI/AHD Cameras + 1 IPC



HYBRID

#### ECL-PRO8 5MP HYBRID DVR

Recording: 5MP/4MP/3MP/1080P/960P/720P/IP input  
Video Output: HDMI, VGA, BNC  
Hard Drives: 2 SATA  
Audio Input: 4  
Features: 8 TVI/AHD/CVI/CVBS Cameras + 4 IPC



P2P

#### ECL-PRO16 5MP HYBRID DVR

Recording: 5MP/4MP/3MP/1080P/960P/720P/IP input  
Video Output: HDMI, VGA, BNC  
Hard Drives: 2 SATA  
Audio Input: 4  
Features: 16 TVI/AHD/CVI/CVBS Cameras + 4 IPC

# PRO SERIES

## 5MP Coax Cameras

06

*The Eclipse Pro Series offers the latest in HD-Coax technology. We offer high-end resolution cameras with high-end features and competitive price points. We offer a wide range of coax options from 2 megapixel to 5 megapixel. Look out for upcoming 4K products soon.*

-  **Starlight** - We offer models with SONY STARVIS sensors for sharp pictures even during extremely low light.
-  **Motorized Lenses** - Adjust the camera lens easily with our motorized lenses.
-  **2-8MP** - Everything you need for high-end Coax installs. We offer camera resolutions from 2-8MP.
-  **4 In 1** - Support AHD, TVI, CVI & 960H video output.
-  **COC** - Control your camera settings directly from the DVR. Including full control of motorized lenses.
-  **IP66** - All outdoor cameras offer IP66 standard.



AHD/TVI  
Available in 2MP

ECL-PRO55 5MP TURRET

3.6mm Lens  
65ft Infrared Distance



MINI  
Available in 2MP

ECL-PRO56 5MP BULLET

2.8mm Wide Angle  
65ft Infrared Distance



VARIFOCAL  
Available in 2MP

ECL-PRO59 5MP BULLET

2.8-12mm Lens  
65ft Infrared Distance



Tamper Proof  
Available in 2MP

ECL-PRO57 5MP DOME

3.3-12mm Lens  
65ft Infrared Distance

WIDE ANGLE 2.5mm

UNIQUE BULLET

ECL-H595I 2MP BULLET





# PRO SERIES PLUS

## HD-COAX CAMERAS



300  
METER  
DISTANCE

**ECL-PRO58 -5MP TURRET DOME**

Res: 5MP  
Lens: 3.3-12mm  
IR Range: 100ft  
Selectable Resolution: 5MP, 4MP, 2MP  
Power: 12 VDC  
Video Output: AHD, TVI, CVI, or CVBS output



LONG  
RANGE

**ECL-PRO59LR - 5 MP HD BULLET**

Res: 5MP  
Lens: 3.3-12mm Lens  
IR Range: 164ft  
Selectable Resolution: 5MP, 4MP, 2MP  
Power: 12 VDC  
Video Output: AHD, TVI, CVI, or CVBS output



COVERT

**ECL-IP5PIR - 5MP Covert Camera**

Hidden HD Camera  
Lens: 3.7mm pinhole lens  
IR Range: 15M Invisible IR  
Selectable Resolution: 5MP, 4MP, 2MP  
Power: 12VDC  
Video Output: AHD, TVI, CVI, or CVBS output

### MULTIPLEX CAMERAS

Our Eclipse Pro series Plus cameras allow you to not only select variable video formats but you can also change the resolution on the cameras just like IP cameras. You can select from 5MP, 4MP, and 1080P. This allows you to use our cameras for older installs with 1080P DVRs while providing your customer the ability to upgrade to 5MP HD in the future.

**5MP SWITCHABLE**  
to 4MP or 2MP

### ECL-MPT 2MP MINI PTZ

Res: 2MP 1080p  
Lens: 2.8-8mm HD Lens  
IR Range: 65ft  
Operating Temp: -20°C ~ 70°C  
Power: 12VDC

NEW!



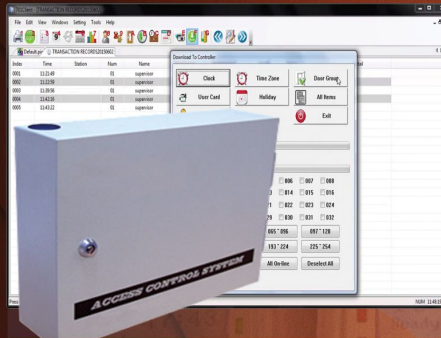


# ECLIPSE ACCESS CONTROL

Readers, Panels & Accessories

08

Eclipse Security offers complete access control products with readers that work in both stand alone mode or networked mode. We also offer UL listed Maglocks and door strikes. Our control panels offer 16 door capability right out of the box and we offer free software with no monthly fees.



Control Panel - 16 Doors



ACCESS CONTROL ACCESSORIES



PROXIMITY READERS & KEYPADS

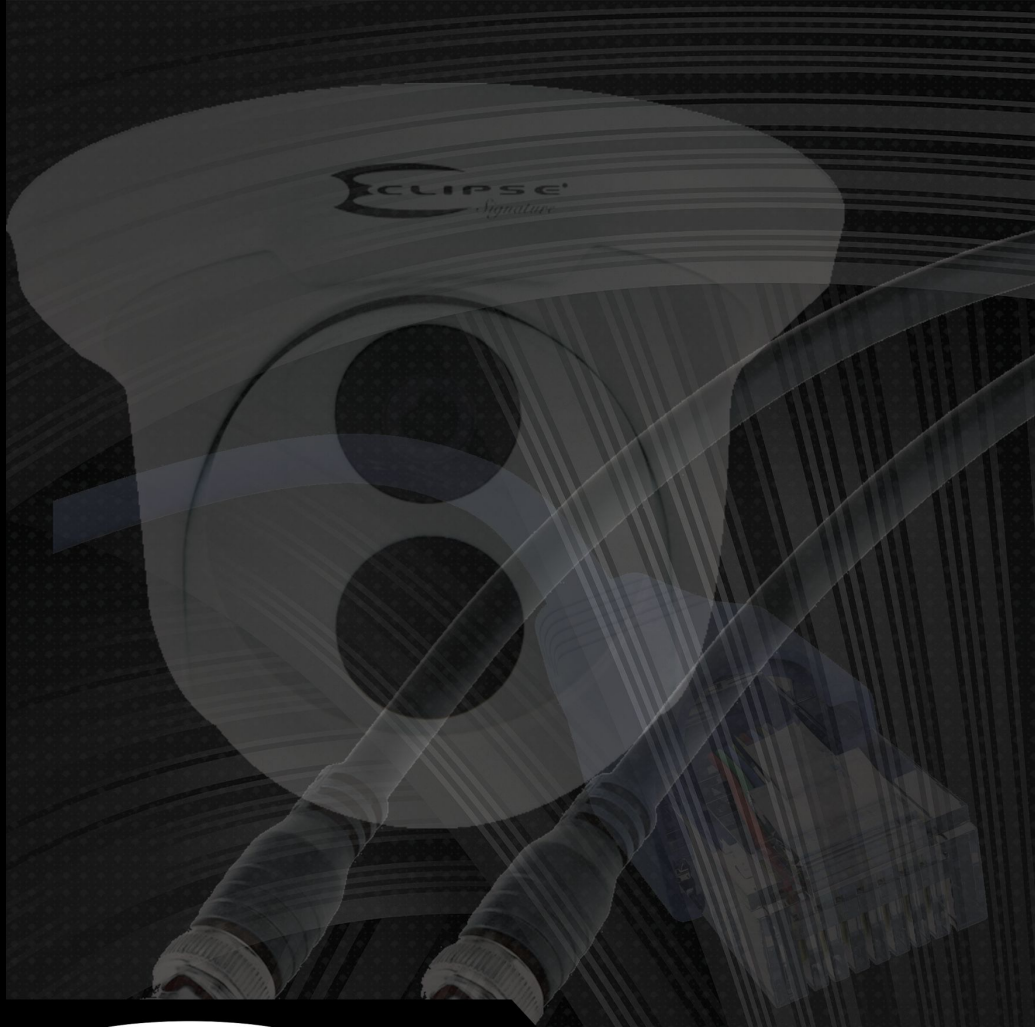


WIEGAND READERS

Old price : \$30  
New price : \$25



BIOMETRIC READERS



**ECLIPSE<sup>®</sup>**  
*Signature*  
THE ALTERNATIVE BRAND



Address:  
3900 N 29th Ave Hollywood, FL 33020  
Phone: 1-888-422-8826  
Web: [www.eclipsesurveillance.com](http://www.eclipsesurveillance.com), Email: [sales@eclipsesurveillance.com](mailto:sales@eclipsesurveillance.com)