



Facility Speaker Bios, Disclosures & CE Details

## Continuing Education/Continuing Medical Education (CE/CME) Activity

**WHEN:** 12N (Central Standard Time) • Tuesday, February 9, 2021

# OPIOID STEWARDSHIP (12n)

### Presentation Purpose:

Learners will gain knowledge regarding management of prescribing and maintenance of patients on controlled prescription drugs.

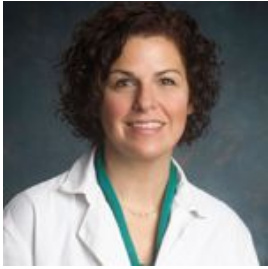
Learners will also learn skills, specifically screening and brief intervention and referral to treatment (SBIRT) for substance use disorder. This activity will improve outcomes to identify and manage treatment referral for patients with substance use disorder, resulting in decreased misprescribing and decreased patient overdose rates.

ACTIVITY SNAPSHOT	
<b>Activity Type:</b> Live/Enduring Activity	
<b>Release Date:</b> February 9, 2021	
<b>Expiration Date:</b> February 9, 2022	
<b>Continuing Education Credits:</b>	
	1.0 CME/CE for Physicians (ACCME)
	1.0 CME/CE for Physician Assistants (AAPA)
	1.0 CPE for Pharmacists (ACPE + NABP)
	1.0 CNE for Nurses (ANCC)
	1.0 ASWB for Social Workers (ASWB)
<b>Estimated Duration:</b> 1 hour (Per Activity)	
<b>Content Last Reviewed:</b> February 9, 2021	

**Learning Objectives:** Upon completion of this activity participants should be able to:

- Understand the '16 tips' for proper prescribing of controlled substances
- Demonstrate improved level of comfort when working with chronic pain and/or substance use disorder patients
- Improve management of patients using controlled prescription drug prescriptions

## Speaker(s) Bio:



### Lauren Walter, MD

Associate Professor  
Emergency Department  
UAB

Lauren Walter MD, FACEP, FAAEM is an Assistant Professor and Core Educational Faculty for the Department of Emergency Medicine, University of Alabama School of Medicine, Birmingham, AL. She completed her undergraduate and medical school training at the University of Michigan in Ann Arbor. She completed her EM residency at the University of Alabama in Birmingham, serving as chief resident her senior year.

Dr. Walter is involved in the EM residency program as a member of the Program Evaluation and Clinical Competency Committees and as a residency faculty mentor. In addition, since 2011 Dr. Walter has also been involved in the UASOM Introduction to Clinical Medicine Program as a Faculty Preceptor, instructing first and second-year medical students in the art of 'History and Physical Exam' skills as well as patient write-ups and oral presentations.

In 2014, Dr. Walter founded the 'Women of Emergency Medicine Mentorship and Interest Group' within the EM residency program to promote mentorship, networking, and scholarly activity amongst female faculty and residents. In addition, Dr. Walter currently serves as faculty mentor for the UASOM American Medical Women's Association (AMWA) Medical Student Branch and has been involved with the Dean's Office of Diversity and Inclusion to create an AMWA Faculty/Physician Branch at UAB.

Dr. Walter's current scholarly interests and projects include development of a Sex and Gender Based Emergency Medicine curriculum for the EM residency as well as for third and fourth year medical students doing their UAB EM rotation. Dr. Walter is also actively involved in Sex and Gender based clinical research.

## Training

### Medical School

University of Michigan-Ann Arbor

### Residency

University of Alabama at Birmingham  
Emergency Medicine

## Disclosures:

**Faculty:** Lauren A. Walter, M.D.

- ❖ Has no relevant financial relationships with ACCME-defined commercial interests
- ❖ Will not be discussing the off-label or investigational use of products

*Course Chair reviewed and found no Conflict of Interest*

All Ascension planners and reviewers have no relevant financial relationships with ACCME-defined commercial interests.

**TARGET AUDIENCE:** This activity is designed for the interdisciplinary audience including physicians, nursing, pharmacy, PA & Social Worker

**DISCLOSURE OF RELATIONSHIPS/CONTENT VALIDITY:** It is the policy of Ascension to adhere to Joint Accreditation Criteria, Policies, and Standards for Commercial Support and content validation in order to ensure fair balance, independence, objectivity, and scientific rigor in all its sponsored activities. All speakers, Course Directors, Co-Course Directors, planners, reviewers, and staff members participating in sponsored activities are expected to disclose relevant financial relationships pertaining to their contribution to the activity. Relationship information is analyzed to determine whether conflicts of interest exist. All conflicts of interest are resolved prior to participation in the planning or implementation of this activity. Presenters and authors are also expected to disclose any discussion of (1) off-label or investigational uses of FDA approved commercial products or devices or (2) products or devices not yet approved in the United States.

Ascension CE/CME activities are intended to be evidence-based and free of commercial bias. If you have any concerns, please call the Ascension CE/CME Department at 205-838-3225 to anonymously express them.

**Commercial Interest:** *No commercial interest was received for this ICPE activity*

### Faculty/Course Director/Planners:

All Ascension planners and reviewers have no relevant financial relationships with ACCME defined commercial interest.

Ascension has selected all faculty participating in this activity. It is the policy of Ascension that all CME/CE planning committees, faculty, authors, editors, and staff disclose relationships with commercial interests upon nomination or invitation of participation. Disclosure documents are reviewed for potential conflicts of interest and if relevant, they are resolved prior to confirmation of participation. Only those participants who have no conflict of interest or who agreed to an identified resolution process prior to their participation were involved in this activity.

**Conflict of Interest:** In accordance with the ACCME Standards for Commercial Support, it is the policy of Ascension/St. Vincent's Health to ensure balance, independence, objectivity and scientific rigor in all CE/CME activities. Full disclosure of conflicts and conflict resolution will be made in writing via handout materials or syllabus.

### Credit Designation:



JOINTLY ACCREDITED PROVIDER®  
INTERPROFESSIONAL CONTINUING EDUCATION

In support of improving patient care, Ascension/St. Vincent's Health is jointly accredited by the Accreditation Council for Continuing Medical Education (ACCME), the Accreditation Council for Pharmacy Education (ACPE), and the American Nurses Credentialing Center (ANCC), to provide continuing education for the healthcare team.



This activity was planned by and for the healthcare team, and learners will receive 1.0 IPCE credits for learning and change.



#### FOR PHYSICIANS:

The Ascension/St. Vincent's Health designates this Live Activity for a maximum of 1.0 credits *AMA PRA Category 1 Credit(s)™*. Physicians should claim only the credit commensurate with the extent of their participation in the activity.



#### FOR NURSING:

This activity is awarded 1.0 contact hours. (based on 60 minutes per contact hour)



#### FOR PHYSICIAN ASSISTANTS:

Ascension/St. Vincent's Health has been authorized by the American Academy of PAs (AAPA) to award AAPA Category 1 CME credit for activities planned in accordance with AAPA CME Criteria. This activity is designated for 1.0 AAPA Category 1 CME credits. PAs should only claim credit commensurate with the extent of their participation.



#### FOR PHARMACY:

This knowledge-based activity qualifies for 1.0 contact hours of continuing pharmacy education credit. Pharmacy CE credits will be submitted electronically to the NABP upon successful completion of the activity.



#### FOR SOCIAL WORKERS:

As a Jointly Accredited Organization, Ascension/St. Vincent's Health is approved to offer social work continuing education by the Association of Social Work Boards (ASWB) Approved Continuing Education (ACE) program. Organizations, not individual courses, are approved under this program. State and provincial regulatory boards have the final authority to determine whether an individual course may be accepted for continuing education credit. Ascension/St. Vincent's Health maintains responsibility for this course. Social workers completing this course receive 1.0 continuing education credits.

#### Obtaining CE Credit:

1. Review the live/enduring activity
2. Complete the activity in its entirety
3. Complete the electronic activity evaluation
4. Certificate of completion will be sent 10 days after each activity viewed. CME, PA NP credits will receive a transcript; CE, Social Work, Allied Health credits will receive a CE certificate electronically to be downloaded to individual boards by the participant and ACPE Pharmacy CE credits will be submitted electronically to the NABP upon successful completion of the activity.