



MODEL HLH ROTAVATOR

**Tillage Width of 70" . . . for Tractors
from 35 H.P. to 50 H.P.**

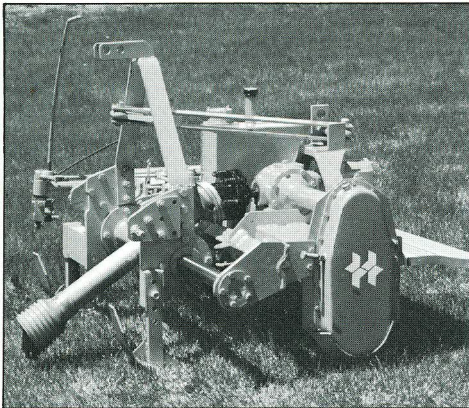
The Model HLH ROTAVATOR puts hydraulics to work saving time and cutting costs in busy vineyards, orchards, groves and nurseries. It offsets hydraulically to till between plants in a row and retracts around them automatically. All the operator has to do is drive straight down the row! This 70-inch ROTAVATOR is ideal for weed control, incorporation, soil conditioning and preparing seedbeds for cover crops. Adjustable offsetting and accurate depth control give you around-the-plant tillage with total confidence.



MODEL HLH ROTAVATOR

A SPECIAL ROTAVATOR FOR SPECIAL NEEDS

The HLH ROTAVATOR is designed to simplify, economize and streamline tillage chores in busy vineyards, groves, orchards and nurseries. This 70-inch tiller offsets and retracts automatically to till between and around trees, grapevines, stakes or obstacles while the operator simply drives straight down the row!



The key is hydraulics and an adjustable "feeler arm" which gently touches a plant or obstacle in a row, retracts the ROTAVATOR toward the tractor, then lets it offset again when the obstacle is past. Inter-plant tillage was never easier, never faster or more complete.

REACH CLOSE BUT NOT "TOO CLOSE"

In its fully offset position the HLH ROTAVATOR extends 59 inches to the right, 11 inches to the left, of the tractor PTO. It moves 14 inches to the left when retracting around an obstacle.

The "feeler arm" is completely adjustable, enabling the operator to match the machine to varying plant and row conditions. You can till closer, faster and more efficiently with full confidence that valuable plants are not being damaged.

DEPTH CONTROL ANOTHER CONFIDENCE FACTOR

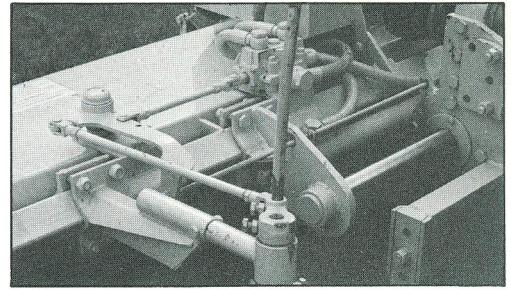
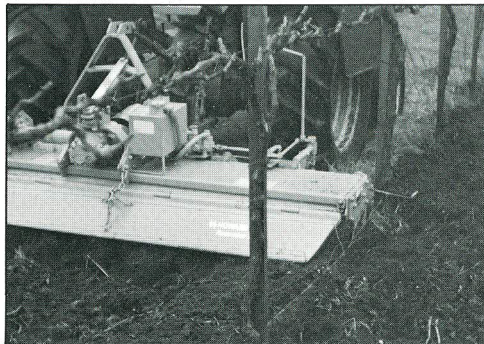
Adjustable twin depth-control skids accurately control tillage depth and provide further assurance that delicate roots will not be harmed. The Model HLH tills up to 5 inches deep.

THREE MODES OF TILLAGE

In addition to operating in the fully automatic mode, this versatile ROTAVATOR can be operated manually whenever the operator wishes. It can also be locked in the central position for a variety of general tillage jobs.

A RUGGED, FULL-FLEDGED TILLER

The HLH is not just a "cultivator" but a full-fledged tiller capable of the toughest



seedbed preparation, incorporation and soil conditioning tasks as well as weed control. World-renowned Howard blades assure trouble-free performance and long life. A friction clutch is provided as standard equipment.

MANY MODELS TO CHOOSE FROM

Howard manufactures a full line of ROTAVATORS for all crops and every tillage need. Choose models from 32 inches to 240 inches wide for 10 H.P. to 250 H.P. tractors. Contact your local Howard dealer or write direct for complete details.

SPECIFICATIONS

Tillage Width: 70"

Power Range: For tractors from 35 to 50 H.P. with 540 rpm PTO.

Linkage: Category I and II, 3-point hitch.

Tillage Depth: Adjustable to 5" via twin depth-control skids.

Rotor Speed: 209 rpm at 540 rpm PTO.

Machine Weight: 1,038 lbs.

DEALER



Howard Rotavator Company, Inc.
A Member of the Howard Group

102 Howard Ave., P.O. Box 7, Muscoda, Wisconsin 53573 (608) 739-3106
Branch in Sacramento, California 95821 (916) 483-2777

HOWARD®
PARAPLOW®
ROTASPIKE®
ROTAVATOR®
SELECTATILTH®
TURF-QUAKER®
are registered trademarks of HOWARD ROTAVATOR COMPANY.

