

# Brinn Transmission Internal Parts Breakdown (#70001 & #70010)



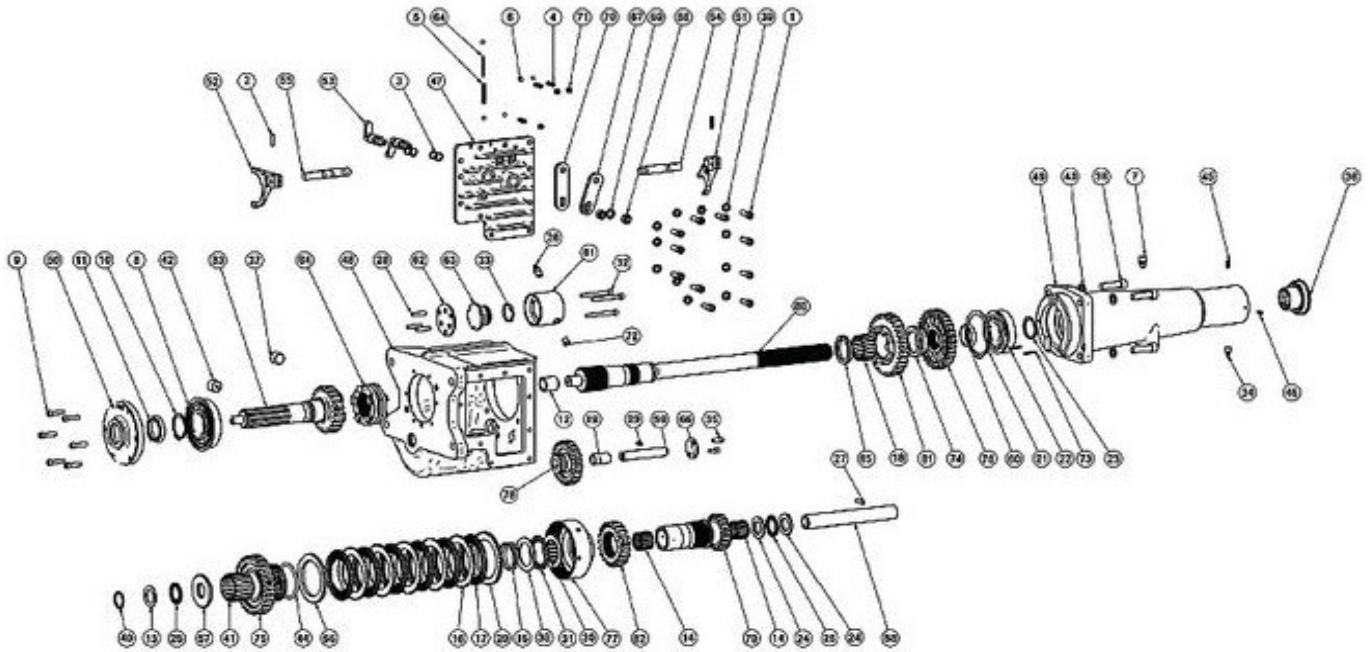
All Brinn Transmission Service Parts  
Available At Racecar Engineering



800-882-7231 — [sales@racecareng.com](mailto:sales@racecareng.com)



## BRI70001 OR BRI70010 ORIGINAL TRANSMISSION EXPLODED ASSEMBLY



Detail	Part No.	Description	Qty.
1	BRI71001	5/16"-18 x 7/8" SHCS	11
3	BRI71003	O-Ring, 10.5mm x 3.0	4
6	BRI71006	Lockout Detent Ball	5
7	BRI71007	Vent Assembly	1
8	BRI71008	Bearing	1
9	BRI71009	1/4"-20 x 1" SHCS	6
10	BRI71010	Retaining Ring	1
11	BRI71011	Oil Seal	1
12	BRI71012	Machined Bushing	1
13	BRI71013	Thrust Washer (.060"-.063" Thick)	1
14	BRI71015	Cage Bearing	2
15	BRI71016	Clutch Return Spring	1
16	BRI71017	Steel Clutch Pressure Disc	5
17	BRI71018	Metallic Friction Disc	6
18	BRI71019	Cage Bearing	1
20	BRI71021	Rear Clutch Disc (.183" Thick)	1
21	BRI71022	Retaining Ring	1
22	BRI71023	Bearing	1
23	BRI71024	Retaining Ring	1
24	BRI71025	Thrust Washer (.154"-.157" Thick)	2
25	BRI71026	Needle Thrust Bearing	2
26	BRI71027	Bleeder Assembly	1
28	BRI71030	Clutch Actuator Pin	3

Detail	Part No.	Description	Qty.
30	BRI71032	Thrust Washer (.092"-.095" Thick)	2
31	BRI71033	Needle Thrust Bearing	1
33	BRI71035	Clutch Piston O-Ring	1
40	BRI71046	O-Ring	1
41	BRI71049	Cage Bearing	1
42	BRI71059	Magnetic Drain Plug	1
44	BRI71063	O-Ring, 70 Durometer Nitrile	1
47	BRI72001	Cover Shift Plate	1
48	BRI720028	Main Case (Aluminium)	1
49	BRI72003	Output Housing (Aluminium)	1
50	BRI72004	Front Retainer	1
52	BRI73002	High/Low Shift Fork	1
53	BRI73003	Shift Lever	2
56	BRI73007	Forward Clutch Ring	1
57	BRI73009	Thrust Race Intermediate Shaft	1
58	BRI73010	Guide Shaft	1
61	BRI73013	Piston Cap	1
67	BRI73021	Reverse Lever	1
70	BRI73024	High/Low Lever	1
75	BRI74002	Input Mesh Gear Driven	1
80	BRI74010	Output Shaft	1
83	BRI74020	Input Shaft	1
84	BRI74021	High/Low Dog Ring	1

Order Online On Our Website: [WWW.RACECARENG.COM](http://WWW.RACECARENG.COM)