

POWERS' PICKS \$15

Volume 6 Issue 7

August 30th-September 3rd, 2018

© 2018 BP Sports, LLC

Five Week 1 College Football Best Bets on Page 3!

★-rated Picks in CFB/NFL 274-224-9 (55%) Last 3 Years!

Week 0 News and Notes!

For those of you that are new, in this section we'll recap what happened last week specifically, the misleading finals, the key injuries, the bad beats and the line moves. We'll include most of these recaps here, therefore you don't have to waste time reading about them in my game-by-game write-ups for the upcoming week. Without further adieu, here's a run down of what happened last week in the world of CFB.

Week 0 Trends Favorites-Dogs

Straight Up 3-1
ATS 2-2

Home-Away

Straight Up 2-2
ATS 1-3

Totals (O/U)

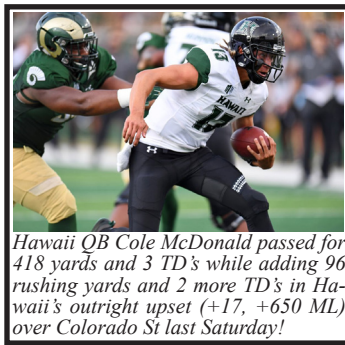
Over-Under 3-1

Largest Favorite to Cover:

UMass (-21) vs Duquesne, 63-15

Biggest Money line Upsets:

Hawaii +650 won 43-34 at Col St (+17)



Hawaii QB Cole McDonald passed for 418 yards and 3 TD's while adding 96 rushing yards and 2 more TD's in Hawaii's outright upset (+17, +650 ML) over Colorado St last Saturday!

Major Injuries/Suspensions

Iowa's projected starting OT's Tristram Wirfs and Alaric Jackson are suspended for the Northern Illinois game. The Hawkeyes already lost a pair of projected starters in the secondary this summer in Manny Rugamba and Brandon Snyder.

Michigan starting WR Tarik Black (foot) is out indefinitely.

Mississippi St QB Nick Fitzgerald has been suspended for the Bulldogs' opener vs Stephen F. Austin this week. Keytaon Thompson who started the bowl win over Louisville has been named the starter.

North Carolina has 11 players serving a suspension (anywhere from 1-4 games) this season due to the selling of merchandise. Three of them were in the mix to start including QB Chazz Surratt, DE Tomon Fox and DE Malik Carney.

Northwestern QB Clayton Thorson (knee) is questionable for the opener at Purdue on Thursday. Thorson had tore his ACL in the bowl game but if you've read the practice reports, it looks like Thorson is more probable than questionable.

Southern Miss QB Kwadra Griggs (suspension) is out indefinitely.

On Monday, UCLA announced six players would be suspended anywhere from 1-3 games. All of them were in the two-deep coming out of spring led by OL Boss Tagaloa and DL Osa Odighizuwa.

Wake Forest QB Kendall Hinton (suspension) will miss the first three games.

Wisconsin starting WR's Danny Davis (suspended) and Quintez Cephus (out indefinitely due to legal issues) will miss this week's game vs Western Kentucky. The Badgers also suffered a pair of injuries to projected starting DE's Garrett Rand and Isaiah Lowdermilk this summer.

Projected Season Win Totals

Using my power ratings as a guideline, we have developed a line on each game played this college football season. This line factors in the difference between the two teams' ratings while also taking into consideration where the game is played. After you have a line for each game, you can come up with a win percentage on the game. Usually 3-point favorites tend to win straight up between 55 and 60% of the time while 7-point favorites win straight up between 65 and 70% of the time.

Many "Joe Public" bettors make the mistake of computing a season win total just by counting wins and losses by who is favored in the game. While that method is a start, it is not the most accurate. When a team is favored by 3-points, they have around a 57% chance to win that game straight up. Therefore, instead of just marking down a full win for that team, you would reward that team with 0.57 of a win. On the other side, if a team is a 3-point underdog, instead of just marking down a full loss for that team, you would reward that team with 0.43 of a win. Then after you have done this for all 12 games, you add up all the decimals and that should be a more accurate season win total for each team.

Team	Wins	Team	Wins	Team	Wins
Air Force	4.8	Iowa State	6.8	Rice	3.6
Akron	4.3	Kansas	2.5	Rutgers	3.7
Alabama	11.1	Kansas State	6.2	San Diego State	8.5
Appalachian State	8.6	Kent State	2.6	San Jose State	2.4
Arizona	7.7	Kentucky	5.2	SMU	4.8
Arizona State	4.9	Liberty	3.4	South Alabama	4.2
Arkansas	5.7	Louisiana Tech	7.4	South Carolina	7.6
Arkansas State	8.7	Louisville	7.1	Southern Miss	6.0
Army	7.8	LSU	7.0	Stanford	8.4
Auburn	8.9	Marshall	7.7	Syracuse	4.9
Ball State	3.5	Maryland	4.7	TCU	7.7
Baylor	6.0	Massachusetts	6.4	Temple	6.9
Boise State	10.0	Memphis	9.2	Tennessee	5.3
Boston College	6.9	Miami (FL)	9.3	Texas	8.4
Bowling Green	4.1	Miami (OH)	6.7	Texas A&M	7.2
Buffalo	6.6	Michigan	9.0	Texas State	4.0
BYU	5.3	Michigan State	9.1	Texas Tech	5.8
California	6.6	Middle Tennessee	7.3	Toledo	8.3
Central Michigan	4.7	Minnesota	5.6	Troy	8.1
Charlotte	3.4	Mississippi State	8.4	Tulane	5.3
Cincinnati	5.1	Missouri	7.4	Tulsa	4.2
Clemson	10.7	Navy	7.7	UAB	7.0
Coastal Carolina	4.1	NC State	7.3	UCF	9.5
Colorado	5.0	Nebraska	5.8	UCLA	4.9
Colorado State	4.7	Nevada	5.8	UL-Lafayette	4.3
Connecticut	3.0	New Mexico	4.0	UL-Monroe	6.0
Duke	6.6	New Mexico State	5.7	UNLV	6.0
East Carolina	3.0	North Carolina	5.5	USC	8.5
Eastern Michigan	5.6	North Texas	7.8	USF	7.7
FIU	4.9	Northern Illinois	6.6	Utah	7.6
Florida	8.0	Northwestern	6.5	Utah State	7.6
Florida Atlantic	8.9	Notre Dame	9.1	UTEP	2.4
Florida State	7.7	Ohio	9.0	UTSA	4.4
Fresno State	8.3	Ohio State	10.2	Vanderbilt	4.6
Georgia	10.3	Oklahoma	10.1	Virginia	4.6
Georgia Southern	6.1	Oklahoma State	7.9	Virginia Tech	8.1
Georgia State	3.9	Old Dominion	5.7	Wake Forest	6.1
Georgia Tech	6.9	Ole Miss	5.9	Washington	9.8
Hawaii	3.7	Oregon	8.5	Washington State	5.7
Houston	8.1	Oregon State	2.2	West Virginia	7.1
Illinois	4.0	Penn State	9.3	Western Kentucky	4.7
Indiana	5.8	Pittsburgh	5.5	Western Michigan	6.4
Iowa	7.1	Purdue	5.5	Wisconsin	9.7
				Wyoming	7.2

Can't Afford VIP Service But Still Want More Information/Picks?
Powers' Picks Newsletter (Emailed Every Wednesday) Regular Price: \$99

Normal Mid-week update with full write-ups on every single CFB and NFL Game and best bets!

Sunday Night Owl Update (Emailed Every Sunday) Regular Price: \$79

1st Newsletter Released Each Week! Get Best Bets Before Big Line Moves!

Vegas Wise Guys Report (Emailed Every Friday) Regular Price: \$79

Get top picks from the pros, see what teams the public prefers and more!

Get 3 Weekly Newsletters for just \$179 Reg. Price \$249

College Football Schedules with Vegas and Brad Powers Lines Week 1 Aug 30th-Sept 4th

Thursday, August 30th		Line	BP	All Times Eastern	Saturday, September 1st		Line	BP	All Times Eastern
133	UCF 7:00 p.m. ESPNU	-23.5	-24		199	COASTAL CAROLINA 12:00 p.m. SEC Network	57	55	
134	CONNECTICUT	74	72		200	SOUTH CAROLINA	-29.5	-25	
135	NORTHWESTERN 8:00 p.m. ESPN	51	53		201	WEST VIRGINIA 3:30 p.m. Charlotte, NC CBS	-10	-13	
136	PURDUE	-1.5	-1		202	TENNESSEE	61.5	55	
137	NEW MEXICO ST 7:00 p.m. Big Ten	45.5	41		203	NORTH CAROLINA 4:00 p.m. FOX	61	58	
138	MINNESOTA	-21	-21		204	CALIFORNIA	-7	-10	
139	WAKE FOREST 8:00 p.m. CBS College	-6	-9		205	WASHINGTON ST 3:30 p.m. CBS College	-1.5	44	
140	TULANE	55	53		206	WYOMING	47	-4	
Friday, August 31st		Line	BP		207	BOWLING GREEN 8:00 p.m. Pac-12	74	71	
141	UTAH ST 7:00 p.m. Big Ten	50.5	47		208	OREGON	-32	-31	
142	MICHIGAN ST	-23.5	-23		209	OLD DOMINION 6:00 p.m.	-6.5	-4	
143	SYRACUSE 6:00 p.m. CBS College	-5.5	-4		210	LIBERTY	58	58	
144	WESTERN MICHIGAN	65	64		211	MICHIGAN 7:30 p.m. NBC	47	-3	
145	WKU 8:00 p.m. ESPN	52.5	60		212	NOTRE DAME	-1	43	
146	WISCONSIN	-35.5	-36		213	LOUISVILLE 8:00 p.m. Orlando, FL ABC	60.5	57	
147	COLORADO ST 9:30 p.m. Denver, CO CBS College	65.5	64		214	ALABAMA	-24.5	-23	
148	COLORADO	-7.5	-10		215	NAVY 11:00 p.m. CBS College	-11.5	-14	
149	SAN DIEGO ST 9:00 p.m. FOX Sports 1	49	47		216	HAWAII	62.5	62	
150	STANFORD	-14	-13		Sunday, September 2nd		Open	BP	
159	ARMY 7:00 p.m. ESPNU	45.5	47		217	MIAMI, FL 7:30 p.m. Arlington, TX ABC	-3.5	-4	
160	DUKE	-13.5	-15		218	LSU	47.5	44	
Saturday, September 1st		Line	BP		Monday, September 3rd		Open	BP	
151	FLORIDA ATLANTIC 12:00 p.m. FOX	70	67		219	VIRGINIA TECH 8:00 p.m. ESPN	57	54	
152	OKLAHOMA	-21	-17		220	FLORIDA ST	-7.5	-8	
153	HOUSTON 12:00 p.m. CBS College	-25.5	-25		FBS vs FCS Matchups Lines Courtesy of 5Dimes.eu				
154	RICE	55.5	51		Thursday, August 30th		Line	Saturday, September 1st	
155	OREGON ST 12:00 p.m. ABC	64	61		221	Central Conn		263	So Carolina St
156	OHIO ST	-38.5	-41		222	Ball St	-14	264	Georgia Southern
157	APPALACHIAN ST 3:30 p.m. Big Ten	54	52		223	Kennesaw St		265	Fordham
158	PENN ST	-23.5	-24		224	Georgia St	+1.5	266	Charlotte
161	AKRON 8:00 p.m. FOX	54.5	58		225	SE Louisiana		267	Delaware St
162	NEBRASKA	-24.5	-24		226	UL-Monroe	-15.5	268	Buffalo
163	MASSACHUSETTS 1:00 p.m.	63	62		227	Weber St		269	Richmond
164	BOSTON COLLEGE	-18	-14		228	Utah	-23	270	Virginia
165	KENT ST 12:00 p.m. Big Ten	55.5	57		229	Missouri St		271	NC A&T
166	ILLINOIS	-16.5	-17		230	Oklahoma St	-36.5	272	East Carolina
167	TEXAS ST 12:00 p.m. Big Ten	47	51		231	Savannah State		273	Elon
168	RUTGERS	-16.5	-17		232	UAB	-34	274	South Florida
169	INDIANA 7:00 p.m. CBS College	-10.5	-13		233	Northwestern St		275	VMI
170	FIU	55	55		234	Texas A&M	-43.5	276	Toledo
171	NORTHERN ILLINOIS 3:30 p.m. Big Ten	48.5	50		235	UC Davis		277	Nicholls St
172	IOWA	-10.5	-4		236	San Jose St	-1.5	278	Kansas
173	TEXAS 12:00 p.m. Landover, MD FOX Sports 1	-13.5	-18		Friday, August 31st		Line	279	Central Arkansas
174	MARYLAND	56.5	58		237	Monmouth		280	Tulsa
175	BOISE ST 8:00 p.m. ESPN News	-10.5	-11		238	Eastern Michigan	-15.5	281	Jackson St
176	TROY	50	51		239	Portland St		282	Southern Miss
177	LOUISIANA TECH 7:00 p.m. ESPNU	-10	-13		240	Nevada	-24	283	Grambling
178	SOUTH ALABAMA	51	53		Saturday, September 1st		Line	284	UL-Lafayette
179	MARSHALL 3:30 p.m.	-2.5	-1		241	James Madison		285	South Dakota
180	MIAMI, OH	51	53		242	NC State	-12	286	Kansas St
181	SMU 7:30 p.m.	71	71		243	Southern		287	Mercer
182	NORTH TEXAS	-4.5	-5		244	TCU	-43.5	288	Memphis
183	MIDDLE TENNESSEE 7:30 p.m. SEC Network	57	54		245	Villanova		289	SE Missouri St
184	VANDERBILT	-3	-6		246	Temple	-15	290	Arkansas St
185	BYU 10:45 p.m. ESPN	60.5	54		247	Furman		291	Charleston Southern
186	ARIZONA	-11.5	-14		248	Clemson	-46	292	Florida
187	UTSA 10:30 p.m. FOX Sports 1	53.5	54		249	Alcorn St		293	Northern Arizona
188	ARIZONA ST	-18.5	-20		250	Georgia Tech	-42	294	UTEP
189	UNLV 4:00 p.m. Pac-12	64	58		251	Stony Brook		295	Stephen F. Austin
190	USC	-26	-24		252	Air Force	-11	296	Mississippi St
191	CINCINNATI 7:00 p.m. ESPN	64	61		253	Howard		297	Abilene Christian
192	UCLA	-15	-13		254	Ohio	-30	298	Baylor
193	WASHINGTON 3:30 p.m. Atlanta, GA ABC	48	-1		255	Albany		299	South Dakota St
194	AUBURN	-2	47		256	Pittsburgh	-24	300	Iowa St
195	CENTRAL MICHIGAN 3:30 p.m. ESPNU	49.5	50		257	Austin Peay		301	Incarnate Word
196	KENTUCKY	-17	-18		258	Georgia	-42	302	New Mexico
197	OLE MISS 12:00 p.m. Houston, TX ESPN	67	68		259	UT Martin	-35	303	Idaho
198	TEXAS TECH	-2.5	-2		260	Missouri		304	Fresno St
					261	Eastern Illinois			
					262	Arkansas	-35		

Want Every FBS vs FCS Pick?
Get CFB VIP Service for the year!
(Includes Every CFB ★-Rated Play): Just \$399
FBS vs FCS ★-rated Picks
17-3 (85%) Last 3 Years!!!
Call 702-419-0473!

4★ = BEST
3★ = BETTER
2★ = GOOD
1★ = FAIR

THE POWERS' PACK

3★ Northern Illinois +10.5 over IOWA (Sat)
2★ Florida Atlantic +21 over OKLAHOMA (Sat)
2★ Massachusetts +18 over BOSTON COLLEGE (Sat)
2★ Texas -13.5 over Maryland (Sat)
2★ WYOMING +1.5 over Washington St (Sat)

Games in Rotation Order **HOME TEAM IN CAPS**

Thursday, August 30th

Ucf 48 CONNECTICUT 24. UConn's defense only returns 2 starters after allowing 38 ppg a year ago. The Huskies are taking on a UCF offense that led the country last year averaging 48 ppg and returns QB McKenzie Milton who accounted for 4,650 total yards and 45 total TD's a year ago. Still the Knights lost their entire coaching staff to Nebraska and we're not huge fans of new head coach Josh Heupel whose Missouri offense last year was overrated due to weak competition. Pass.

PURDUE 27 Northwestern 26. Believe it or not, Northwestern comes in with the 2nd longest win streak at 8 games. While the Wildcats return 14 starters, they do lose their all-time leading rusher in Justin Jackson, whose 5,440 career yards is in the Top 10 all-time in NCAA history! It does look like Wildcat QB Clayton Thorson will play here after tearing his ACL in last year's bowl game. On the other side, Purdue will have an improved offense in year two under Jeff Brohm but their defense may take a step back. Note that Northwestern is 23-9 ATS as a road dog the last 10 years. Pass.

MINNESOTA 31 New Mexico St 10. Horrible spot here for New Mexico St traveling across country on a short week after they were physically dominated by Wyoming last week (out-rushed 312-Negative 9). Keep in mind, New Mexico St got 93 of their 135 total yards on a garbage TD drive. We gave Minnesota -18 out on the Sunday Night Owl update and the line has moved nearly 3 points. However note that the Gophers are just 1-10 ATS as a double-digit favorite in their last 11 games. We lean with the UNDER here.

Wake Forest 31 TULANE 22. Wake Forest QB Kendall Hinton is suspended for the first 3 games of the season and the money has poured in on Tulane in this game all summer long. However, we actually lean with Wake Forest here. Dave Clawson is doing a tremendous job in Winston-Salem fresh off back-to-back bowl wins and the Demon Deacons return all 5 starters on the offensive line. On the other side, Tulane loses 3 starters on their defensive line and their top 2 tacklers at LB. This number is now too short especially considering WF has had all summer to prep for the option.

Friday, August 31st

MICHIGAN ST 35 Utah St 12. We're actually disappointed these two teams are playing one another here as we think both are "buy" teams this season. Utah St returns 18 starters while Michigan St brings back 19. While Michigan St is 0-4 ATS as a 3-TD favorite, Utah St's blowout losses at Wisconsin (59-10, +27.5) and at Wake Forest (46-10, +13) last year give us some pause in this one. Pass.

Syracuse 34 WESTERN MICHIGAN 30. We expect both teams to be much improved this season after QB injuries derailed their season a year ago. At one point, Syracuse was 4-3 and off an upset of Clemson before dropping their last 5 games. Meanwhile, WMU was 4-2 with only losses to USC and Michigan St before finishing the season 6-6. This is the first time Syracuse is a road favorite since 2014 and Western Michigan HC Tim Lester was the Syracuse O.C. in 2014-15. Slight lean WMU.

WISCONSIN 48 Western Kentucky 12. Wisconsin does not come into this game at 100% as starting WR's Danny Davis and Quintez Cephus will miss this game. Also the Badgers suffered a pair of injuries to projected starting DE's Garrett Rand and Isaiah Lowdermilk this summer. With that being said, Wisconsin has the best offensive line in the country (all 5 starters return) and should take advantage of a WKU defense that really slipped a year ago. We lean OVER.

† **Colorado 37 Colorado St 27.** Denver, CO. We're buying Colorado low in this one after the Buffaloes are coming off a disappointing 5-7 season in 2017. While the Buffs only return 10 starters, they should be improved over last season. One of their returning starters is QB Steven Montez who is a Top 25 QB nationally and Colorado should have a much improved defensive line. Last week the Rams lost outright as a 17-point favorite to Hawaii. At one point, Colorado St trailed 37-7. The bright spot was QB K.J. Carta-Samuels throwing for a school-record 537 yards and 5 TD's. Colorado H.C. Mike MacIntyre does value this series winning and covering each of the last 3.

STANFORD 30 San Diego St 17. Stanford has revenge for a 20-17 loss (-8.5) last year at San Diego St. It was legit as Stanford was out-gained 353-254 but San Diego St was +3 TO's. Stanford will be better on offense this year thanks to improved QB play with KJ Costello and the return of RB Bryce Love but the Cardinal will be weaker on defense (lost top 3 players). On the other side, San Diego St loses RB Rashard Penny (2,248 rush yards). Yesterday, Stanford announced six key players would be out for this game including starting C Jesse Burkett and CB Alijah Holder and the Cardinal do have USC on deck. Slight lean on the Aztecs here.

DUKE 31 Army 16. Duke has revenge for a 21-16 loss (-3) at Army a year ago. This will be the third straight season Duke has played Army (held the Knights to just 217 ypg) and with an entire off-season, the Blue Devils should be well versed in stopping the option. On the other side, Army is fresh off a 10-win season but is likely to take a step back this fall. We lean with the Blue Devils here.

Saturday, September 1st

2★ FAU (plus the points) OKLAHOMA 42 Florida Atlantic 25. FAU had 10 straight wins to close last season with an average cover by 15 ppg! The Owls have 15 returning starters including 10 on defense. On offense, RB Devin Singletary is one of the top 25 players in the country (32 rushing TD's in 2017). Meanwhile, Oklahoma will be better than people expect on offense (QB Murray, RB Rodney Anderson and WR Hollywood Brown). However, we should see a motivated Lane Kiffin here as you have to think Kiffin feels he should be the head coach at a place like Oklahoma making millions like Lincoln Riley. Here's his chance to make a statement.

Houston 38 RICE 13. Houston crushed Rice 38-3 last year leading 38-0 at halftime and has now won and covered 4 straight in the series (avg win by 25 ppg). Last week in new head coach Mike Blomgren's first game, Rice had to rally from a 28-19 4Q deficit to beat Prairie View A&M as a 3-TD favorite. The Owls did amass 310 yards rushing led by Esupka (173). We're leaning with the UNDER.

OHIO ST 51 Oregon St 10. No Urban Meyer here for the Buckeyes (suspended first three games) and Ryan Day is the interim coach. Keep in mind, the Buckeyes have two experienced head coaches on staff in O.C. Kevin Wilson and D.C. Greg Schiano. While Ohio St loses all-time passing leader J.T. Barrett, Dwayne Haskins could actually give them improvement in their vertical pass game. On the other side, this is the first game for new Oregon St head coach Jonathan Smith. The Beavers along with Kansas are the worst Power 5 teams in the country this season. Last year the Beavers gave up 51 ppg on the road. It doesn't get any easier here.

PENN ST 38 Appalachian St 14. Penn St did lose Saquon Barkley to the NFL Draft but the Nittany Lions still have a Heisman contender in QB Trace McSorley. The bigger loss may have been O.C. Joe Moorhead leaving for Mississippi St. On the other side, the Mountaineers have done quite well vs Power 5 competition but do lose 4-year starting QB Taylor Lamb. We're passing.

NEBRASKA 41 Akron 17. Akron has dropped 24 straight road openers by 30 ppg. The money has poured in on Nebraska all summer long in this game but yet the total hasn't moved much. That doesn't make a ton of sense as Nebraska is going very up-tempo this season under new head coach Scott Frost while the defense still has a major talent gap between the top-tier programs (see last year's defense in the final 3 games allowing 56 ppg). We like the OVER.

2★ UMass (plus the points) BOSTON COLLEGE 38 Massachusetts 24. Boston College is a preseason darling as they had the biggest season win total line move at South Point (opened 5.5, now 7). In our opinion, BC has gone from underrated to now overrated! Meanwhile, UMass has a game under belt advantage as they won Saturday 63-15 over Duquesne (covered spread by 27 points). UMass is not afraid of the big boys as the last two years vs Power 5 teams, they are 5-1 ATS. The average line in those games +26 with an average cover by 14 ppg! Keep in mind, the Minutemen nearly won outright at Tennessee and at Mississippi St last year and Boston College is 0-8 ATS in home openers.

ILLINOIS 37 Kent St 20. Kent St is moving to an up-tempo offense under new head coach Sean Lewis (Syracuse assistant) and the OVER has taken a lot of action in the market (opened 50.5, now 56). On the other side, Illinois started more freshman than any other team in the country last year and should be improved in 2018. The Illini are also moving to a more up-tempo offense. Tough laying more than 2 TD's with an Illinois team that comes in on a 10-game losing streak. Pass.

RUTGERS 34 Texas St 17. Rutgers will start true frosh Artur Sitkowski at QB. He gets to face a Texas St defense that ranked No. 127 against the pass a year ago. On the other side of the ball, Rutgers has 7 players suspended on defense due to a credit card scandal. That should allow for the Texas St offense to have some success. Lean OVER.

Indiana 34 FIU 21. Indiana came-from-behind in both 2015 and 2016 vs FIU scoring the game's final 17 and 22 points in wins and covers. Last year's game was canceled due to Hurricane Irma. Both head coaches enter their second season but it was FIU HC Butch Davis who made the bigger splash in year one doubling FIU's win total from 4 to 8 while also signing the best recruiting class in school history this past February. On the other side, Indiana will start Peyton Ramsey at QB but RB Morgan Ellison is suspended for this game.

BP Sports Football Packages

Item:	Reg:	Sale:
Powers' Picks Newsletter	\$99	\$89
Sunday Night Owl	\$79	\$69
Wise Guys Report	\$79	\$69
Newsletter Bundle (All 3)	\$249	\$179
September CFB/NFL VIP	\$349	\$299
2018 College Football VIP	\$499	\$399
2018 NFL VIP	\$499	\$399
2018 CFB and NFL VIP	\$998	\$749
Bundle (VIP/Newsletters)	\$1249	\$899

Have questions? Need more info? Want to sign up? You can also send a check payable to:

Call 1-702-419-0473
or order online at bradpowerssports.com

BP Sports, LLC
2764 N. Green Valley Pkwy #103
Henderson, NV 89014

3★ (Northern Illinois plus the points) IOWA 27 Northern Illinois 23. The Hawkeyes have 4 starters suspended for this game including both of their offensive tackles. The Hawkeyes are notorious for struggling in openers including an outright loss to NIU in 2013. Meanwhile the Huskies played well vs similar style Boston College and San Diego St last year in the underdog role. NIU DE Sutton Smith 29.5 TFL's last year (most in the country) should take advantage and the Huskies return all 5 starters on the OL and all 4 starters on the DL. In the last 10 years, Northern Illinois is 41-19 ATS (68%) on the road while in the last 6 years, Iowa is a poor home favorite at just 12-22-1 ATS (35%). Finally NIU is on a 11-1 ATS run vs the Big Ten.

† **2★ Texas 38 Maryland 20.** Landover, MD. This is a big revenge spot for Texas who lost outright at as an 18.5-point favorite in last year's opener. We'll chalk that up as a first game out-lier as after that, Texas was a Top 25 team going 8-3-1 ATS while nearly winning 9 or 10 games (4 losses by 5 points or less). On the other side, Maryland has been extremely poor vs ranked teams the last 3 years going 1-12 SU and 4-9 ATS outscored by an average of 30 ppg in those 13 games. This is NOT a true home game for Maryland as it will be played in Landover, MD (home of the Redskins). Therefore, there will probably be at least 10,000-15,000 Texas fans in stands. Finally, all the turmoil surrounding the Maryland program has to be a distraction.

Boise St 31 TROY 20. Last year Boise won 24-13 (-11.5) on the Smurf Turf. It's tough laying double-digits on the road in the heat and humidity of the South against a Troy team that is 21-5 the last two years. However, in the last 10 years, Boise St is 36-16 ATS (69%) as an away favorite and Troy loses their 4-year starting QB in Brandon Silvers and their 2nd-leading rusher in school history in Jordan Chunn.

Louisiana Tech 33 SOUTH ALABAMA 20. Louisiana Tech only led 17-16 last year before scoring the game's final 17 points in a 34-16 win. We like new South Alabama head coach Steve Campbell but think his Jaguars are a little out-classed here against a Louisiana Tech team that was better than their record indicated a year ago (3 losses by one point) and return a starting QB for the first time since 2010.

Marshall 27 MIAMI, OH 26. Marshall has won 9 of the last 10 meetings. Last year's loser on Miami, Oh (+2.5) on these pages set the tone for a disappointing 2017 campaign. It was an extremely tough loss considering Miami had a 415-259 yard edge as a dog but Marshall scored 3 long non-offensive TD's. We expect both teams to be play-on teams this season as Marshall returns 18 starters while Miami returns 16. This should be one of the more competitive week one games.

NORTH TEXAS 38 Smu 33. The home team is on a 8-1 SU run in the series and the Mean Green were a perfect 6-0 at home last year. Last year SMU took home a 54-32 win (-13.5) but the two teams both had 493 yards of total offense. North Texas is the more experienced team with 17 returning starters while the Ponies welcome in a new head coach in Sonny Dykes. Fireworks galore.

VANDERBILT 30 Middle Tennessee 24. These two schools are only 35 miles apart. Middle Tennessee QB Brent Stockstill was held to a season low 166 passing yards in last year's 28-6 loss to Vanderbilt at home. We had a star-rated play on Vanderbilt -3 on these pages and it was "Men against Boys". Now flash forward to a year later and Vanderbilt, an SEC school is laying a FG at home to a CUSA team. The Dores are on a 8-0 ATS run vs CUSA opponents the last 5 years and get another win and cover here.

ARIZONA 34 Byu 20. We lean with Arizona here as the Kevin Sunlin era starts in Tucson against a BYU team that has faded under the direction of head coach Kalani Sitake. We do prefer the UNDER as defenses figured out Khalil Tate at end of last season (only 118 yards rushing the last 3 games combined) Meanwhile, the Arizona defense should be much improved with 9 returning starters (best D in 5 years).

ARIZONA ST 37 Utsa 17. The Herm Edwards era begins in Tempe as Edwards returns after a decade long absence in the coaching rank and Herm hasn't coached in college since 1989. He inherits a talented Arizona St offense led by QB Manny Wilkins and WR N'Keal Harry. On the other side, UTSA is lightly experienced with only 10 returning starters this year and they lost star DE Marcus Davenport to the first round of the NFL draft. Slight lean on the home team here.

USC 41 Only 17. USC is replacing their starting QB, top rusher and top receiver for the first time since 1980. True Frosh J.T. Daniels will get the start at QB but the Trojans have Stanford and Texas on deck. USC key DL Porter Gustin could be out vs a UNLV rush offense that averaged 240 ypg last year. UNLV QB Armani Rogers is mobile, and could allow for the back door cover. Finally, Clay Helton notorious slow starter while UNLV is 21-8 ATS as a road dog since 2012.

UCLA 37 Cincinnati 24. This is the first game for UCLA new head coach Chip Kelly and it will take time to implement his offense. Practices are closed for UCLA and it will be interesting to see who starts the season at QB for the Bruins. On the other side, Cincinnati should be improved in year two under Like Fickell (signed best recruiting class out of all Group of 5 teams). Note earlier this week UCLA suspended 6 players who were all in the two-deep at end of spring.

† **Washington 24 Auburn 23.** Atlanta, GA. This will be Auburn's 3rd straight game in the same stadium and the Tigers will have the crowd edge here. That is probably worth 1.5-2 points in favor of the Tigers. However, by backing the Huskies, we have the better team and better coach. Washington has 17 returning starters from a 10-win team that was injury-ravaged. The Huskies have a Top 10 QB in Jake Browning, a Top 10 RB in Myles Gaskin, a Top 5 OT in Trey Adams and a Top 10 DT in Greg Gaines. Auburn is just 1-9 SU/ATS vs ranked teams away from home.

KENTUCKY 34 Central Michigan 16. Kentucky was 0-6 ATS as a favorite a year ago. It's tough laying a big number here with a Wildcats team that has a question mark at QB. However, Central Michigan is one of the least experienced teams in the country with 10 returning starters and the Chips were extremely fortunate to win 8 games a year ago (+4 close wins and were only favored in 3 games).

† **Texas Tech 35 Ole Miss 33.** Houston, TX. Believe it or not, it is Ole Miss, not Texas Tech that has the better pass attack here. Rebels QB Jordan Ta'amu actually had better stats than Shea Patterson a year and WR AJ Brown is among the best in the country. Meanwhile, Texas Tech has a new QB, new RB and 5 of their top 6 WR's gone. However, the Red Raiders' defense was much improved last year (allowed 11 ppg less) and has 10 starters back this year. We're passing.

SOUTH CAROLINA 40 Coastal Carolina 15. Joe Moglia returns as head coach for CCU after missing all of last year due to medical issues. It's tough laying 4-TD's plus when you have a big game vs Georgia on deck, it's a Noon ET local start and the Gamecocks had to replace their field this week after it was tore up from a Jay-Z/ Beyonce concert over the weekend. Also note that Coastal only lost by 1 point at SEC Arkansas last year. We like the big dog here.

† **West Virginia 34 Tennessee 21.** Charlotte, NC. West Virginia has a big edge at QB with Will Grier here who is the best pure passer in CFB this year. He will be throwing to one of the best sets of WR's in CFB. Meanwhile, the Vols are changing schemes on both sides of the ball and are inexperienced. Quite simply, this is a rebuilding project for new UT head coach Jeremy Pruitt. We lean with WV.

CALIFORNIA 34 North Carolina 24. Cal is one of the most improved teams in the country this year and last year was better than their 5-7 record indicated. They return 18 starters and are one of the most experienced teams in the country. On the other side, while improved this season, North Carolina has several players suspended for this game (see page 1). Keep in mind last year, in a horrible spot for Cal (traveling across country for a 9am PT kickoff), the Bears won 35-30 as 12.5-point underdogs. This year they win by more than a TD.

2★ WYOMING 24 Washington St 20. Wyoming played old school football last week in their 29-7 mauling of New Mexico St that wasn't as close as the final. The Cowboys had a 449-135 yard edge including a dominating 312-(-9) edge on the ground. Keep in mind, New Mexico St got 93 yards late on a garbage TD drive. Wyoming has 3-4 legit NFL caliber players on their defense led by DE Carl Granderson while Washington St is one of the least experienced teams in the country especially at the line of scrimmage. Wyoming is on a 9-3 ATS run as a home dog with 7 outright upsets while Washington St is 0-4 ATS in their last 4 openers under Mike Leach failing to cover the spread by a combined 85.5 points!!!

Updated College Football Power Ratings for Week 1

Rank	Team	1/10	8/28	Rank	Team	1/10	8/28	Rank	Team	1/10	8/28	Rank	Team	1/10	8/28
1.	Alabama	98.98	97.30	34.	Louisville	81.56	78.18	67.	Ohio	68.65	69.11	100.	UNLV	58.11	60.15
2.	Clemson	95.30	96.04	35.	UCF	83.42	78.16	68.	Navy	71.49	69.00	101.	Eastern Michigan	65.95	59.79
3.	Ohio State	96.18	94.03	36.	NC State	82.86	77.90	69.	Colorado	71.84	68.52	102.	Oregon State	59.38	59.11
4.	Georgia	96.19	93.18	37.	Duke	76.00	77.40	70.	Marshall	65.74	68.40	103.	Colorado State	67.88	58.55
5.	Oklahoma	95.65	90.83	38.	Northwestern	78.50	77.39	71.	Toledo	72.56	68.34	104.	UL-Monroe	55.45	58.48
6.	Auburn	90.56	90.27	39.	Arizona	76.02	77.38	72.	Northern Illinois	64.74	68.05	105.	Southern Miss	63.25	57.85
7.	Washington	86.28	90.26	40.	Iowa	77.69	76.70	73.	Temple	68.00	67.98	106.	Georgia Southern	51.26	57.72
8.	Michigan	80.75	90.01	41.	Kansas State	77.37	76.46	74.	Vanderbilt	69.81	67.74	107.	Old Dominion	52.39	57.14
9.	Wisconsin	91.75	89.14	42.	Florida Atlantic	76.12	76.33	75.	Middle Tennessee	65.53	67.58	108.	Central Michigan	63.05	56.40
10.	Penn State	93.46	88.07	43.	California	73.93	75.31	76.	Virginia	68.74	67.03	109.	FIU	58.92	56.24
11.	Notre Dame	86.58	87.25	44.	Memphis	78.25	75.26	77.	Wyoming	64.92	66.88	110.	Akron	54.69	55.98
12.	Michigan State	81.11	87.05	45.	Purdue	76.74	75.25	78.	Utah State	62.66	66.88	111.	Bowling Green	54.23	55.68
13.	Miami (FL)	82.73	85.86	46.	Texas Tech	75.29	75.06	79.	Arkansas State	65.77	66.46	112.	Western Kentucky	58.58	55.64
14.	Mississippi State	82.28	85.27	47.	Wake Forest	78.56	75.05	80.	Louisiana Tech	63.26	66.45	113.	UTSA	60.13	55.55
15.	Stanford	84.70	85.18	48.	Baylor	67.81	74.44	81.	BYU	59.09	66.38	114.	New Mexico	56.63	55.41
16.	Texas	81.32	84.43	49.	Pittsburgh	74.42	74.43	82.	Army	70.58	66.23	115.	New Mexico State	59.54	54.64
17.	Florida State	80.21	84.04	50.	Ole Miss	72.67	74.30	83.	Appalachian State	68.59	66.15	116.	East Carolina	54.90	53.34
18.	USC	85.60	83.88	51.	Nebraska	65.87	74.17	84.	Troy	69.80	64.82	117.	Georgia State	55.56	52.60
19.	LSU	86.39	82.24	52.	UCLA	69.55	73.53	85.	Miami (OH)	60.96	64.03	118.	South Alabama	51.96	52.48
20.	TCU	85.48	82.01	53.	Fresno State	70.83	73.07	86.	North Texas	61.01	63.76	119.	Connecticut	55.93	52.42
21.	Oklahoma State	86.35	81.49	54.	San Diego State	71.57	72.99	87.	Illinois	58.78	63.23	120.	UL-Lafayette	52.61	52.29
22.	Oregon	78.35	81.48	55.	Arkansas	68.49	72.65	88.	Tulane	64.01	63.19	121.	Coastal Carolina	51.00	51.85
23.	Texas A&M	76.39	81.23	56.	Arizona State	75.25	72.27	89.	Rutgers	61.28	62.95	122.	Ball State	41.43	51.77
24.	Florida	71.33	80.68	57.	Washington State	78.96	72.19	90.	Western Michigan	62.48	62.47	123.	Charlotte	46.46	51.33
25.	Utah	79.99	80.66	58.	Indiana	75.29	72.13	91.	SMU	63.52	62.20	124.	Hawaii	53.05	50.83
26.	Boise State	76.01	80.43	59.	Houston	72.09	71.76	92.	Massachusetts	60.03	61.87	125.	Texas State	46.88	49.32
27.	Virginia Tech	81.21	80.28	60.	Kentucky	71.86	71.27	93.	Buffalo	59.97	61.62	126.	San Jose State	44.70	48.25
28.	South Carolina	76.14	80.22	61.	Minnesota	68.98	70.83	94.	Nevada	59.01	61.12	127.	Kent State	47.68	48.22
29.	Missouri	79.12	80.05	62.	North Carolina	69.93	70.69	95.	Air Force	63.56	60.60	128.	Rice	49.54	47.96
30.	West Virginia	71.64	79.94	63.	Tennessee	65.30	70.55	96.	UAB	57.93	60.57	129.	Liberty	42.83	47.65
31.	Boston College	77.42	79.07	64.	Maryland	65.41	70.04	97.	Kansas	53.30	60.47	130.	UTEP	42.40	45.98
32.	Georgia Tech	77.63	78.36	65.	USF	77.47	69.65	98.	Tulsa	57.77	60.24				
33.	Iowa State	81.03	78.31	66.	Syracuse	69.35	69.42	99.	Cincinnati	55.00	60.23				

Biggest Movers Since Last Year

Team	Pts
Ball St	+10.3
Florida	+9.4
Michigan	+9.3
West Virginia	+8.3
Nebraska	+8.3
BYU	+7.3
Kansas	+7.2
Baylor	+6.6
Ga Southern	+6.5
Michigan St	+5.9
Tennessee	+5.2
Cincinnati	+5.2
Charlotte	+4.9
Army	-4.4
UTSA	-4.6
Oklahoma	-4.8
Oklahoma St	-4.9
New Mexico St	-4.9
NC State	-5.0
Troy	-5.0
UCF	-5.3
Penn State	-5.4
Southern Miss	-5.4
Eastern Mich	-6.2
Central Mich	-6.7
Washington St	-6.8
USF	-7.8
Colorado St	-9.3

OREGON 51 Bowling Green 20. Expectations are high for Oregon this year under new head coach Mario Cristobal. Most of it is due to the return of QB Justin Herbert. Keep in mind, with Herbert last year (8 games), Oregon outscored their opponents 49-26. Without Herbert last year (5 games), Oregon was outscored by their opponents 34-15. On the other side, this looks like another tough season for the Falcons. Oregon can name their score here.

Old Dominion 31 LIBERTY 27. Welcome to the FBS Liberty. Their HC Turner Gill was previously a head coach at Buffalo and Kansas and last year the Flames beat Big 12 Baylor 48-45 as 30-point underdogs. Liberty does return 16 starters and should be playing in front of a fired up home crowd. On the other side, ODU should be much improved this season with 16 returning starters and QB Steven Williams is no longer a 17-year old true frosh. Lean on the home dog.

Michigan 23 NOTRE DAME 20. Since 1978, the underdog in the UM/ND series has gone 23-7-1 ATS with 17 outright upsets. The Michigan defense has a huge advantage over a ND offense that loses its top RB, top WR, top 2 OL in the NFL Draft and their OL coach (best assistant on team). Also ND QB Brandon Wimbush completed less than 50% of his passes a year ago (practice reports have not been good) and he will be going up against arguably best secondary in the country. Meanwhile, Ole Miss transfer Shea Patterson is just what Jim Harbaugh needed to take the next step.

† **Alabama 40 Louisville 17, Orlando, FL.** This is the largest underdog role that Louisville has been in since 2000 and the Cards are 6-0 ATS as double-digit dogs since 2010. It's not often that you have a match-up edge with a 24-plus point un-

derdog but Louisville could have improved pass attack with Jawon "Puma" Pass (6-4 230) and an elite WR corps vs an inexperienced Alabama secondary (lost top 6 players). Plus the loss of Lamar Jackson makes Louisville underrated. Note that the Cards were 5-12 ATS in Jackson's last 17 starts.

Navy 38 HAWAII 24. Last week the Warriors pulled a huge upset 43-34 as 17-point dogs at Colorado St. QB Cole McDonald led the way with 418 passing yards while adding 96 rushing yards. Navy head coach Ken Niumatalolo was Hawaii's QB from 1987-1989 so it will be a homecoming of sorts. We feel that Hawaii's home field edge is overrated as the Warriors are just 4-18-1 ATS in their last 23 home games.

Sunday, September 2nd

† **Miami, Fl 24 Lsu 20.** This year's Miami team has 14 returning starters and is about 3 points better than last year's team. On the other side, out of 65 Power 5 conference teams, LSU ranks dead last in returning experience (No. 129 in the country). This is the first time since 1974 that LSU doesn't return a back that rushed for a TD as they lose their best player in Derrius Guice. New QB transfer Joe Burrow doesn't move the needle much for us. Lean on the UNDER.

Monday, September 3rd

FLORIDA ST 31 Virginia Tech 23. This is the most important conference game in Week 1. It is the first game for new FSU head coach Willie Taggart (from Oregon) and the Seminoles have a distinct advantage here with their experienced up-tempo offense vs an inexperienced Virginia Tech defense that is very thin in the secondary (lost 3 projected starters in the summer).

Week 1 Computer Projected Lines for Every CFB Game

For the past couple of seasons we have posted computer projected lines at pregame.com. Games where there was of difference of more than 3 points saw our computer lines actually beat the Vegas line at a 155-129-7 (55%) clip the last two years That's pretty solid and actually better than our own handicapping (much to our dismay). Keep in mind, these computer lines don't take into consideration off-the-field factors like revenge or flat spots. They are basically a power-rating number difference between the two teams that also takes into consideration the home field advantage.

Of the 4 games where our computer is off more than 3 points compared to the Vegas line (highlighted), our favorite team this week to back would be **Louisville +24.5**.

The Comp column is the computer projected line and the Diff column is the difference between the Vegas line and the Computer line. "+" numbers in the difference column say back the underdog. "-" numbers in the difference column say back the favorite. Let us know if you have questions.

Game	Line	Comp	Diff	Game	Line	Comp	Diff
Thursday, August 30th							
133 Central Florida				177 Louisiana Tech			
134 Connecticut	+23.5	+23	+0.5	178 South Alabama	+10	+11	-1
135 Northwestern				179 Marshall			
136 Purdue	-1.5	-0.6	+0.9	180 Miami Oh	+2.5	+1.6	+0.9
137 New Mexico St				181 SMU			
138 Minnesota	-21	-19.7	+1.3	182 North Texas	-4.5	-5.1	-0.6
139 Wake Forest				183 Middle Tennessee			
140 Tulane	+6	+8.6	-2.6	184 Vanderbilt	-3	-3.4	-0.4
Friday, August 31st							
141 Utah St				185 BYU			
142 Michigan St	-23.5	-24.7	-1.2	186 Arizona	-11.5	-14.3	-2.8
143 Syracuse				187 UTSA			
144 Western Michigan	+5.5	+3.5	+2	188 Arizona St	-18.5	-20.7	-2.2
145 WKU				189 UNLV			
146 Wisconsin	-35.5	-38.3	-2.8	190 USC	-26.5	-28.7	-2.2
147 Colorado St				191 Cincinnati			
148 Colorado	-7.5	-10	-2.5	192 UCLA	-15	-16.3	-1.3
149 San Diego St				193 Washington			
150 Stanford	-14	-15.7	-1.7	194 Auburn	-2	-1.5	+0.5
151 Army				195 Central Michigan			
160 Duke	-13.5	-14.7	-1.2	196 Kentucky	-17	-18.4	-1.4
Saturday, September 1st							
151 Florida Atlantic				197 Mississippi			
152 Oklahoma	-21	-19.8	+1.2	198 Texas Tech	-2.5	-1.8	+0.7
153 Houston				199 Coastal Carolina			
154 Rice	+25.5	+21.8	+3.7	200 South Carolina	-29.5	-32.1	-2.6
155 Oregon St				201 West Virginia			
156 Ohio St	-38.5	-39.2	-0.7	202 Tennessee	+10	+9.4	+0.6
157 Appalachian St				203 North Carolina			
158 Penn St	-23.5	-26.9	-3.4	204 California	-7	-8.4	-1.4
161 Akron				205 Washington St			
162 Nebraska	-24.5	-22.4	+2.1	206 Wyoming	+1	+1.8	-0.8
163 Massachusetts				207 Bowling Green			
164 Boston College	-18	-20.2	-2.2	208 Oregon	-32	-30.3	+1.7
165 Kent St				209 Old Dominion			
166 Illinois	-16.5	-18	-1.5	210 Liberty	+6.5	+7.2	-0.7
167 Texas State				211 Michigan			
168 Rutgers	-16.5	-16.6	-0.1	212 Notre Dame	-1	-1.2	-0.2
169 Indiana				213 Louisville			
170 FIU	+10.5	+12.9	-2.4	214 Alabama	-24.5	-20.1	+4.4
171 Northern Illinois				215 Navy			
172 Iowa	-10.5	-12.7	-2.2	216 Hawaii	+11.5	+14.7	-3.2
173 Texas				Sunday, September 2nd			
174 Maryland	+13.5	+12.4	+1.1	217 Miami Fl			
175 Boise State				218 LSU	+3.5	+3.1	+0.4
176 Troy	+10.5	+12.6	-2.1	Monday, September 3rd			
				219 Virginia Tech			
				220 Florida State	-7.5	-8.5	-1

Top ATS Trends/Angles for Week 1 CFB

- Northwestern is 23-9 ATS as a road dog the last 10 years. This week the Wildcats are +1.5 at Purdue.
- Minnesota is on a 1-10 ATS run as a double-digit favorite. This week the Gophers are -20.5 at home vs New Mexico St.
- Syracuse is a 5.5-point favorite at Western Michigan on Friday. It's the first time the Orange are a road favorite since 2014.
- Wisconsin is just 1-5 ATS in their last 6 games as a 30-point or more favorite. This week the Badgers are 35.5-point favorites at home to WKU.
- Lane Kiffin is 6-0 ATS as a double-digit dog in his career. This week FAU is +21 at Oklahoma.
- UMass is 5-1 ATS vs Power 5 teams the last two years. The average line in those games +26 with an average cover by 14 ppg! This week the Minutemen are +18 at Boston College.
- Boston College is 0-8 ATS in home openers. This week the Eagles are -18 at UMass.
- In the last 10 years, Northern Illinois is 41-19 ATS (68%) in all their road games. This week the Huskies are +10.5 at Iowa.
- Northern Illinois is on a 11-1 ATS run vs the Big Ten.
- Maryland has been extremely poor vs ranked teams the last 3 years going 1-12 SU and 4-9 ATS. They have been outscored by an average of 30 ppg in those games. This week Maryland plays No. 23 Texas and the Terps are 13.5-point underdogs.
- In the last 10 years, Boise St is 36-16 ATS (69%) as an away favorite. This week Boise is -10.5 at Troy.
- Vanderbilt is on a 8-0 ATS run vs CUSA teams in the last 5 years. This week the Commodores are laying 3 points at home vs Middle Tennessee
- Auburn is just 1-9 SU/ATS in their last 10 games away from home vs ranked teams. This week the Tiggers are -1.5 vs No. 6 Washington in Atlanta.
- Since 1978, the underdog in the UM/ND series has gone 23-7-1 ATS with 17 outright upsets.
- Since 2006, Michigan is 0-16 SU/4-12 ATS on the road vs ranked teams. This week Michigan is +1 at No. 12 Notre Dame.
- Louisville is a 24.5-point underdog to Alabama this week. That is the Cardinals' largest underdog since 2000 (+33.5 at #2 Florida St, lost 31-0).
- Alabama head coach Nick Saban is a perfect 11-0 SU/9-1 ATS in season openers.
- Hawaii's home field edge is overrated as the Warriors are just 4-18-1 ATS in their last 23 home games.

Powers' Picks ★-Rated Picks Since Dec 1st 42-25-2 (63%) +\$2,320

2★ Massachusetts (+1.5) over FIU	L	(\$220)
2★ Akron (+21.5) over Toledo	W	\$200
1★ Tcu/OKLAHOMA UNDER 63.5	W	\$100
3★ SEATTLE (+6) over Philadelphia	W	\$300
2★ San Francisco (+3.5) over CHICAGO	W	\$200
2★ N.Y. JETS (+3.5) over Kansas City	W	\$200
3★ ARIZONA (+3) over Tennessee	W	\$300
2★ KANSAS CITY (-4) over Oakland	W	\$200
2★ ATLANTA (+1.5) over New Orleans	W	\$200
1★ Troy (-6) over North Texas	W	\$100
1★ W Kentucky (-6) over Georgia St	L	(\$110)
1★ Oregon/Boise St OVER 59.5	W	\$100
1★ Colorado St (-5.5) over Marshall	L	(\$110)
2★ Middle Tennessee/Arkansas St OVER 62	W	\$200
3★ KANSAS CITY (+1.5) over L.A. Chargers	W	\$300
2★ Dallas (-3) over OAKLAND	P	\$0
2★ Arizona (+4.5) over WASHINGTON	L	(\$220)
1★ Akron (+22.5) over Florida Atlantic	L	(\$110)
1★ Louisiana Tech (+5) over Smu	W	\$100
1★ Florida International (+7.5) over Temple	L	(\$110)
2★ Uab (+7.5) over Ohio	L	(\$220)
1★ Central Michigan (PK) over Wyoming	L	(\$110)
1★ Texas Tech/South Florida OVER 67	W	\$100
3★ San Diego St (-7) over Army	L	(\$330)
1★ Appalachian St (+8) over Toledo	W	\$100
3★ NEW ORLEANS (-5.5) over Atlanta	W	\$300
2★ Cleveland (+6.5) over CHICAGO	L	(\$220)
2★ SAN FRANCISCO (+4.5) over Jacksonville	W	\$200
1★ Fresno St (+2.5) over Houston	W	\$100
1★ Utah (-6.5) over West Virginia	W	\$100
1★ Duke (-4.5) over Northern Illinois	W	\$100
2★ Kansas St (-2.5) over UCLA	W	\$200
3★ Southern Miss (+16.5) over Florida St	L	(\$330)

2★ Boston College (+3) over Iowa	L	(\$220)
2★ Texas (+3) over Missouri	W	\$200
1★ Purdue (+3.5) over Arizona	W	\$100
1★ Virginia/NAVY OVER 55	W	\$100
1★ Oklahoma St (-4) over Virginia Tech	W	\$100
2★ Stanford (+2.5) over Tcu	W	\$200
4★ Michigan St (+2) over Washington St	W	\$400
1★ Wake Forest (-3) over Texas A&M	P	\$0
1★ Arizona St (+6.5) over N.C. State	L	(\$110)
1★ Kentucky (+8) over Northwestern	W	\$100
1★ Utah St (-4) over New Mexico St	L	(\$110)
2★ Southern Cal (+7.5) over Ohio St	L	(\$220)
3★ Louisville (-6.5) over Mississippi St	L	(\$330)
2★ Iowa St (+4) over Memphis	W	\$200
1★ Penn St (-2) over Washington	W	\$100
3★ Miami, FL (+6) over Wisconsin	L	(\$330)
2★ Buffalo (-3 EVEN) over MIAMI	W	\$200
2★ Cincinnati (+10 -120) over BALTIMORE	W	\$200
1★ San Francisco (-1) over L.A. RAMS	W	\$100
1★ South Carolina (+8) over Michigan	W	\$100
1★ Central Florida (+9.5) over Auburn	W	\$100
2★ Lsu (-3) over Notre Dame	L	(\$220)
2★ Oklahoma (+2) over Georgia	L	(\$220)
1★ Clemson (+3) over Alabama	L	(\$110)
1★ UNDER 44.5 Tenn/KANSAS CITY	W	\$100
2★ Atlanta (+6.5) over L.A. RAMS	W	\$200
1★ JACKSONVILLE (-8) over Buffalo	L	(\$110)
1★ OVER 48.5 Carolina/NEW ORLEANS	W	\$100
1★ UNDER 45 Alabama/Georgia	L	(\$110)
1★ PHILADELPHIA (+3) over Atlanta	W	\$100
1★ UNDER 47.5 Tennessee/NEW ENGLAND	L	(\$110)
1★ UNDER 41 Jacksonville/PITTSBURGH	L	(\$110)
2★ MINNESOTA (-4) over New Orleans	W	\$200
1★ UNDER 46.5 Jacksonville/NEW ENGLAND	W	\$100
2★ PHILADELPHIA (+3 EVEN) over Minnesota	W	\$200
1★ New England -180 ML over Philadelphia	L	(\$180)

POWERS' PICKS #1 Newsletter Last 3 Years!!

2015-17 Combined Nationwide Football Newsletter Contest (Regular Season Only)

We are happy to provide you with the records, standings and plays used from the Power Sweep (3★, 4★ & Underdog), Gold Sheet (Key Releases), Power Plays (4.5★), Sports Reporter (Best & Super Bets), Winning Points (Best Bets & Preferred), Playbook (3-5★'s), Pointwise (Ratings 1-4) and Powers' Picks (1-4★'s)

College						NFL						College/NFL Combined					
Newsletter	W	L	T	%	Net	Newsletter	W	L	T	%	Net	Newsletter	W	L	T	%	Net
Pointwise	127	107	6	54.27%	20	Powers' Picks	85	63	3	57.43%	22	Powers' Picks	189	159	7	54.31%	30
Sports Reporter	78	70	7	52.70%	8	Power Sweep	56	43	2	56.57%	13	Sports Reporter	133	114	9	53.85%	19
Powers' Picks	104	96	4	52.00%	8	Sports Reporter	55	44	2	55.56%	11	Power Sweep	136	117	6	53.75%	19
Power Sweep	80	74	4	51.95%	6	Pointwise	78	70	7	52.70%	8	Pointwise	205	177	13	53.66%	28
Playbook	58	54	7	51.79%	4	Gold Sheet	77	70	6	52.38%	7	Winning Points	221	218	10	50.34%	3
Winning Points	123	116	6	51.46%	7	Winning Points	98	102	4	49.00%	-4	Gold Sheet	152	154	8	49.67%	-2
Gold Sheet	75	84	2	47.17%	-9	Power Plays	24	32	0	42.86%	-8	Playbook	121	141	10	46.18%	-20
Power Plays	64	75	10	46.04%	-11	Playbook	63	87	3	42.00%	-24	Power Plays	88	107	10	45.13%	-19
Combined	709	676	46	51.19%	33	Combined	536	511	27	51.19%	25	Combined	1245	1187	73	51.19%	58

Powers' Picks Newsletter: (28 Email Issues) Just \$89

- Best winning % last 3 years in CFB/NFL combined!
- 107-74-3 (59%) record on all NFL picks last 3 years!
- 22-11 (67%) record in NFL Playoffs last 3 years!!!
- Emailed every Wednesday during regular season
- Emailed monthly during the off-season
- Write-ups on every CFB/NFL game each week
- News and Notes from the week prior
- Bad Beats from the previous week's games
- Misleading Finals from the week prior
- Major Injuries that could impact lines
- Weekly CFB Power Ratings on all 130 teams
- Full-season Schedule Logs for every single team
- Computer Projected Lines for Every CFB Game
- Top CFB ATS Trends each week
- Pictures of actual betting tickets made by Brad Powers during the week!

Have questions? Need more info? Want to sign up?

Call 1-702-419-0473

or order online at bradpowerssports.com

You can also send a check payable to:

BP Sports, LLC

2764 N. Green Valley Pkwy #103
Henderson, NV 89014