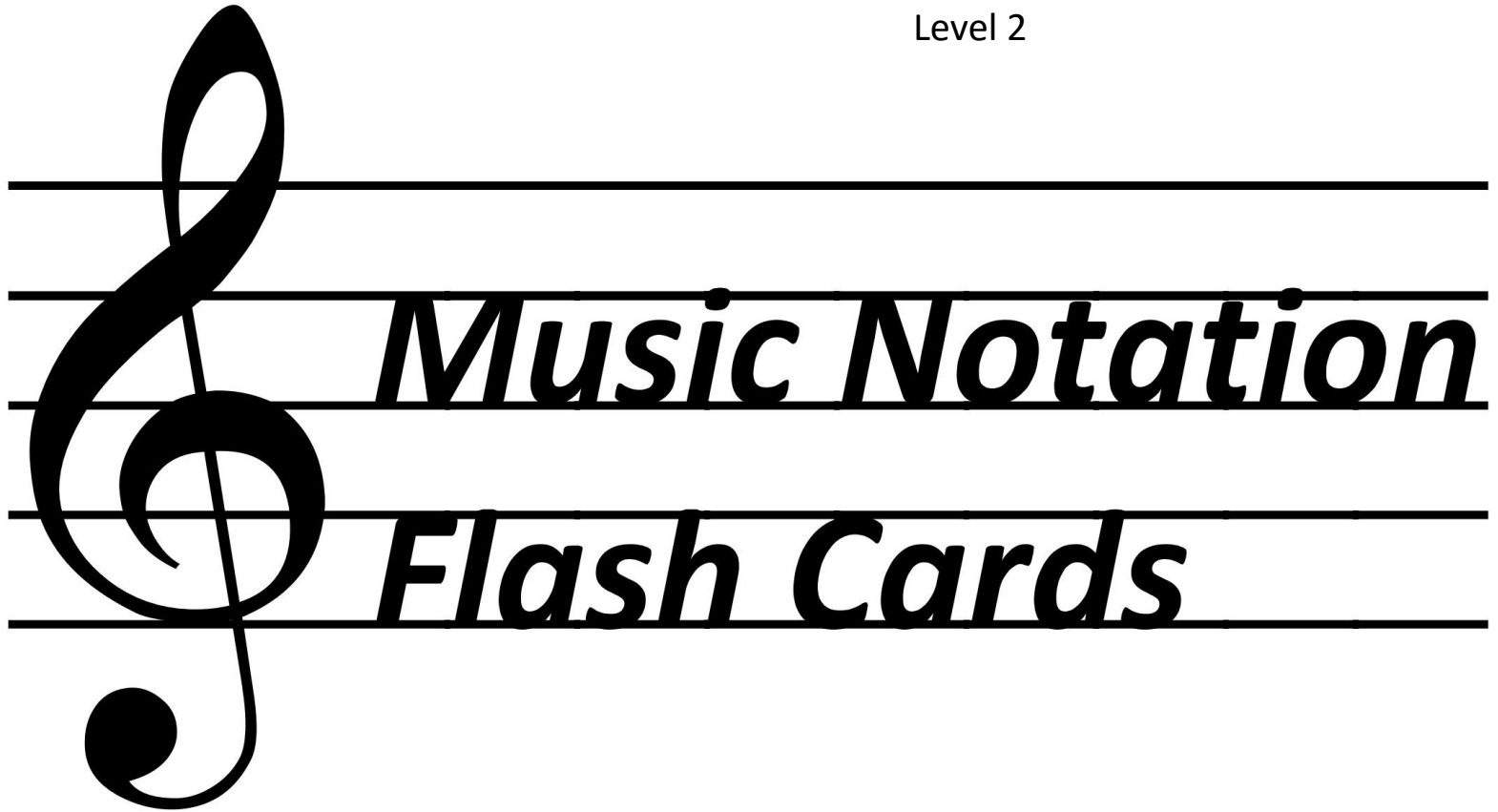
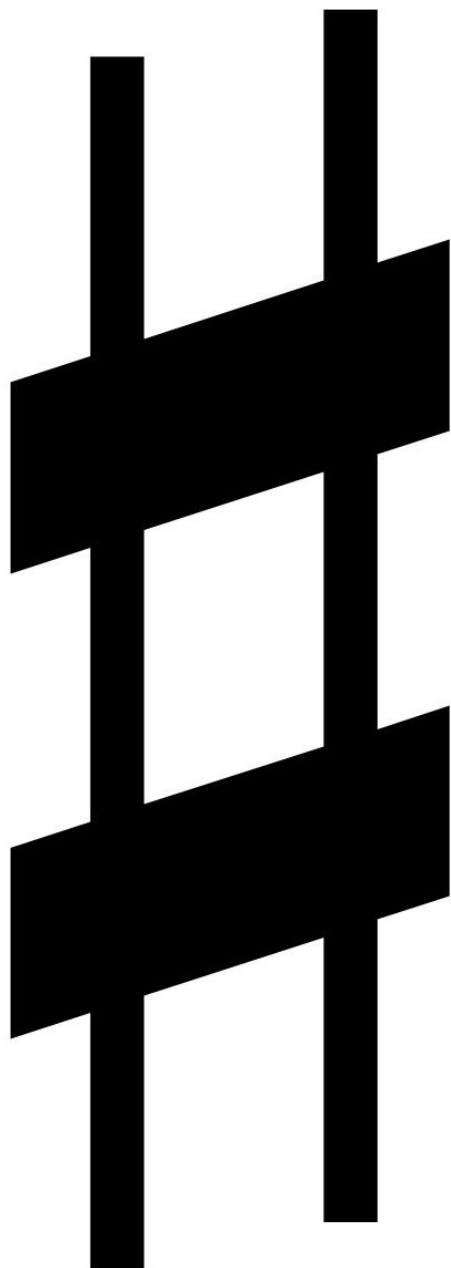


Hancock County Children's Choir

Level 2







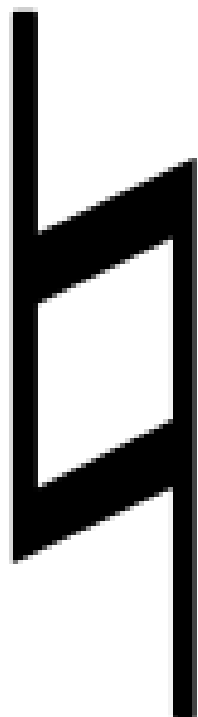
# Sharp

*A sharp sign written before a note raises the pitch of the note by a half step.*

**b**

# Flat

*A flat sign written before a note lowers the pitch of the note by a half step.*



## **Natural**

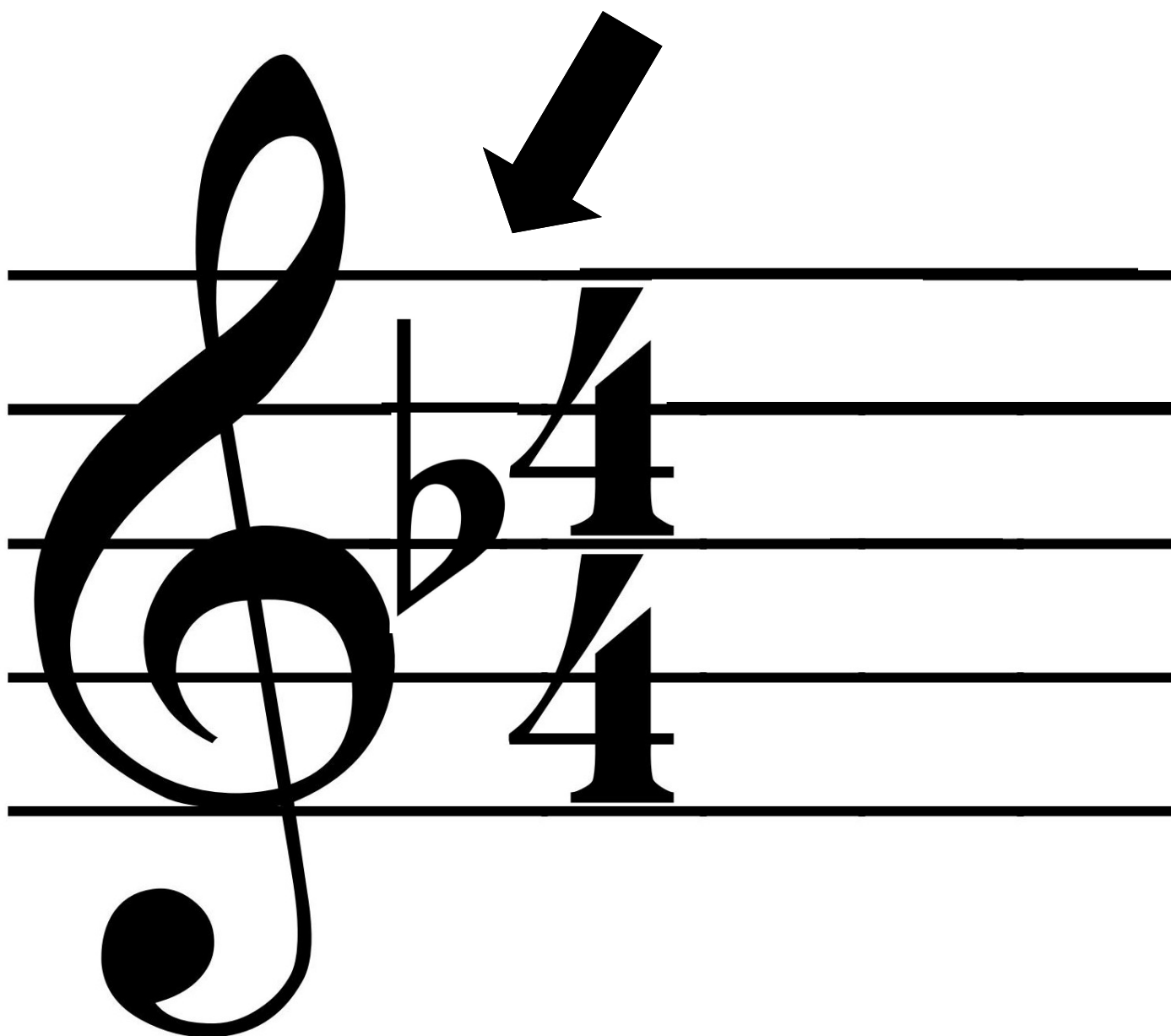
A natural sign written before a note cancels the previous sharp or flat for that note.





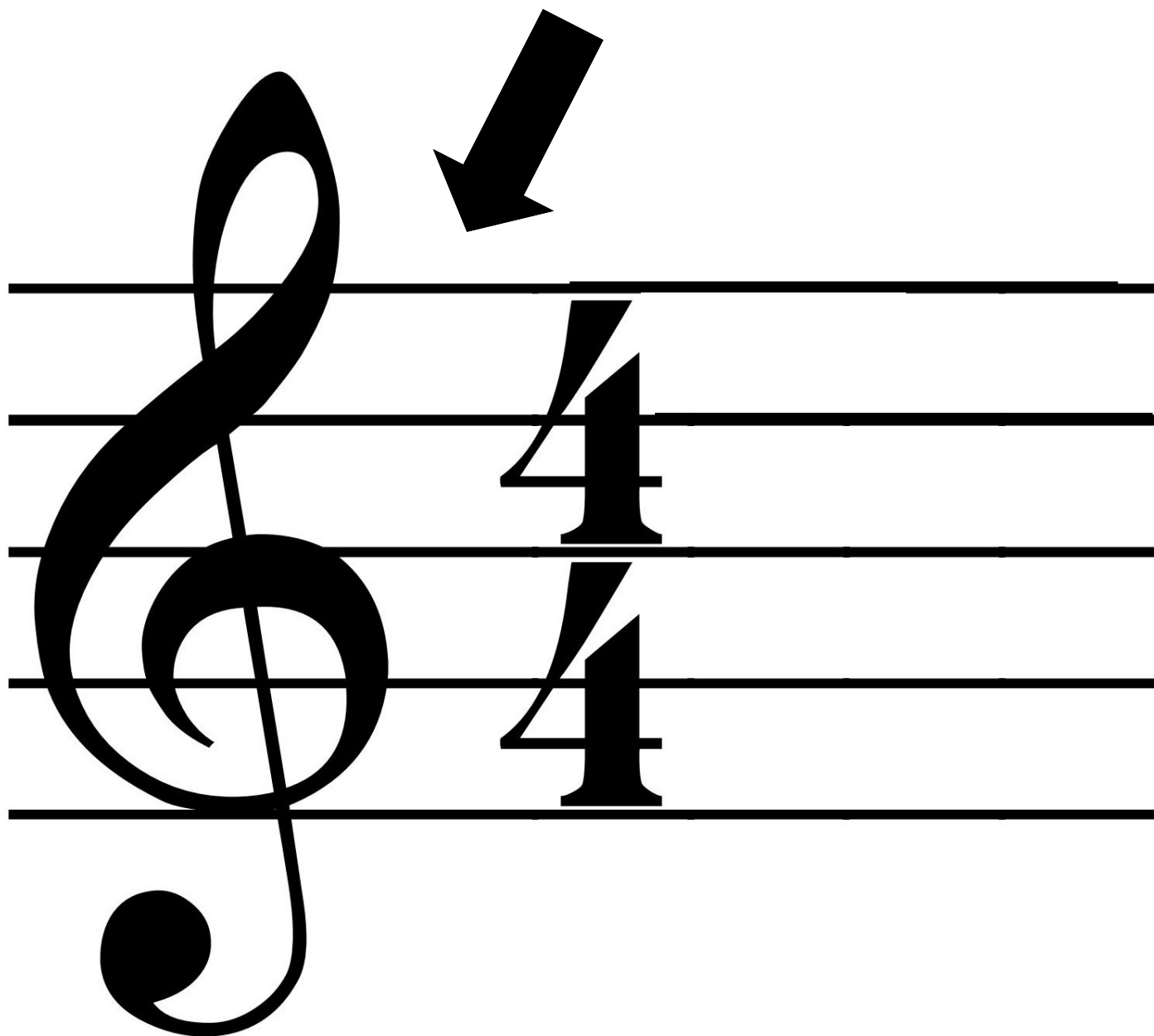
# **Key Signature-**

## Key of G Major



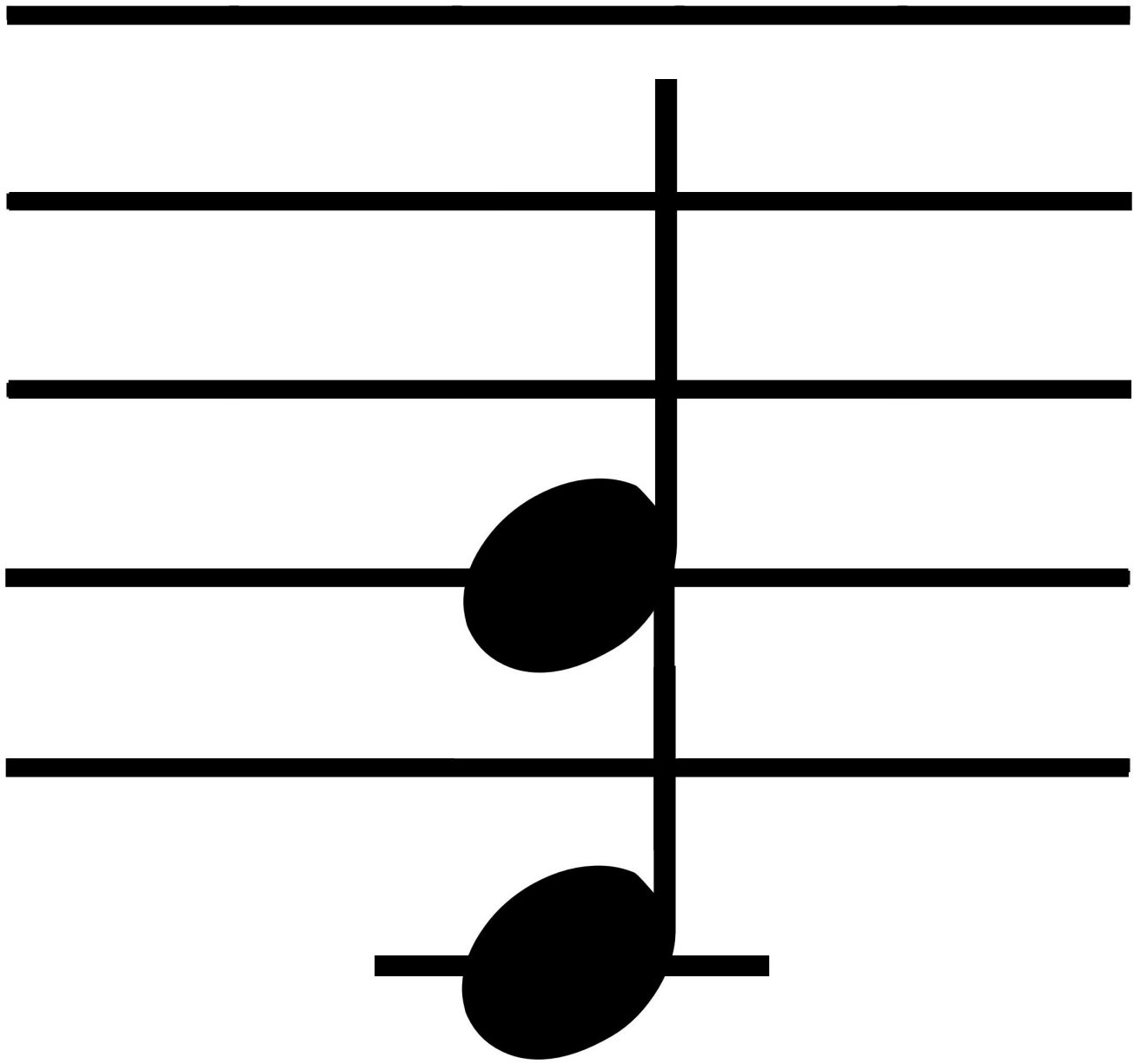
# **Key Signature-**

## Key of F Major



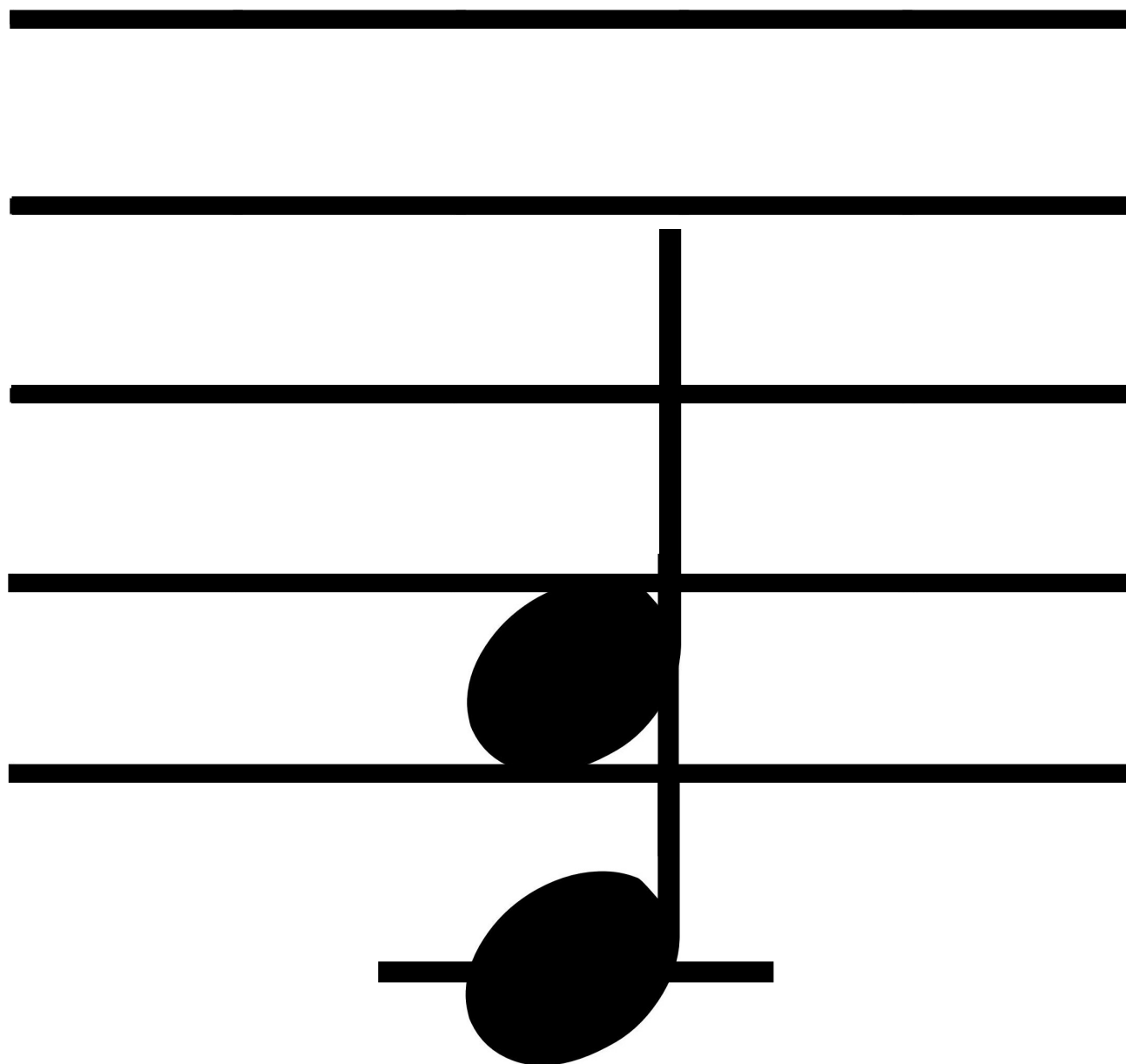
**Key Signature-**

Key of C Major

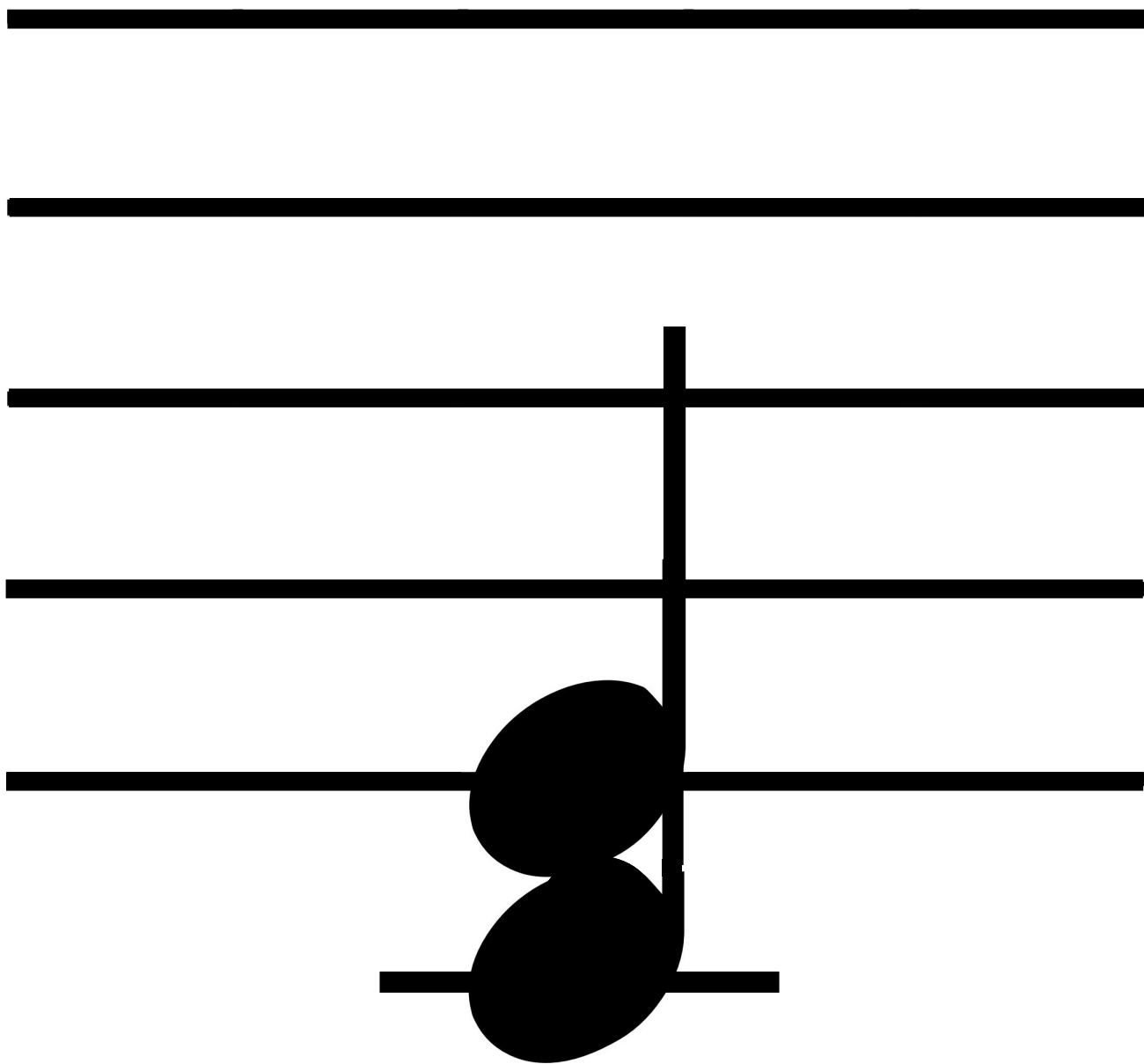


# Interval- 5th



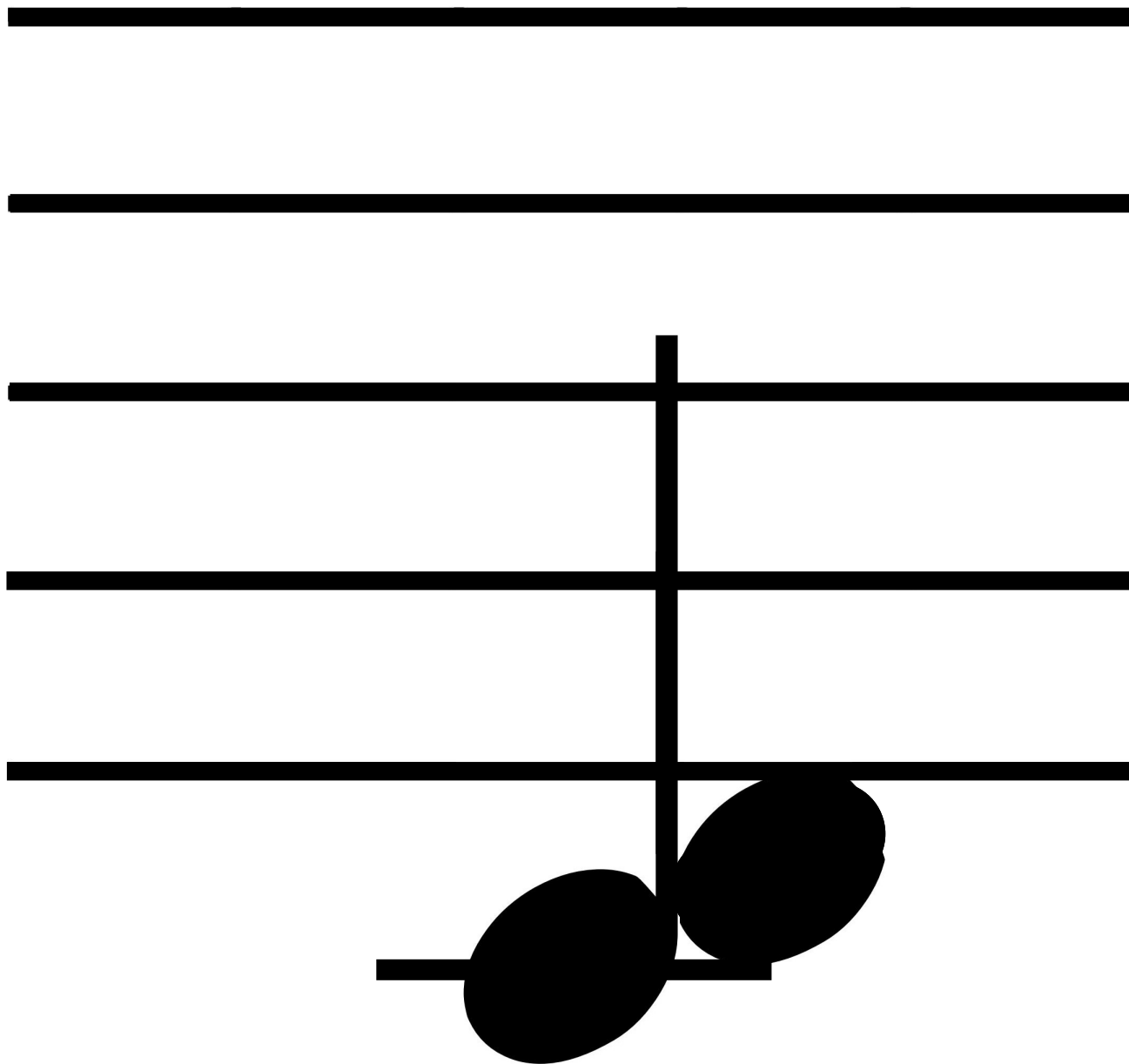


# Interval- 4th



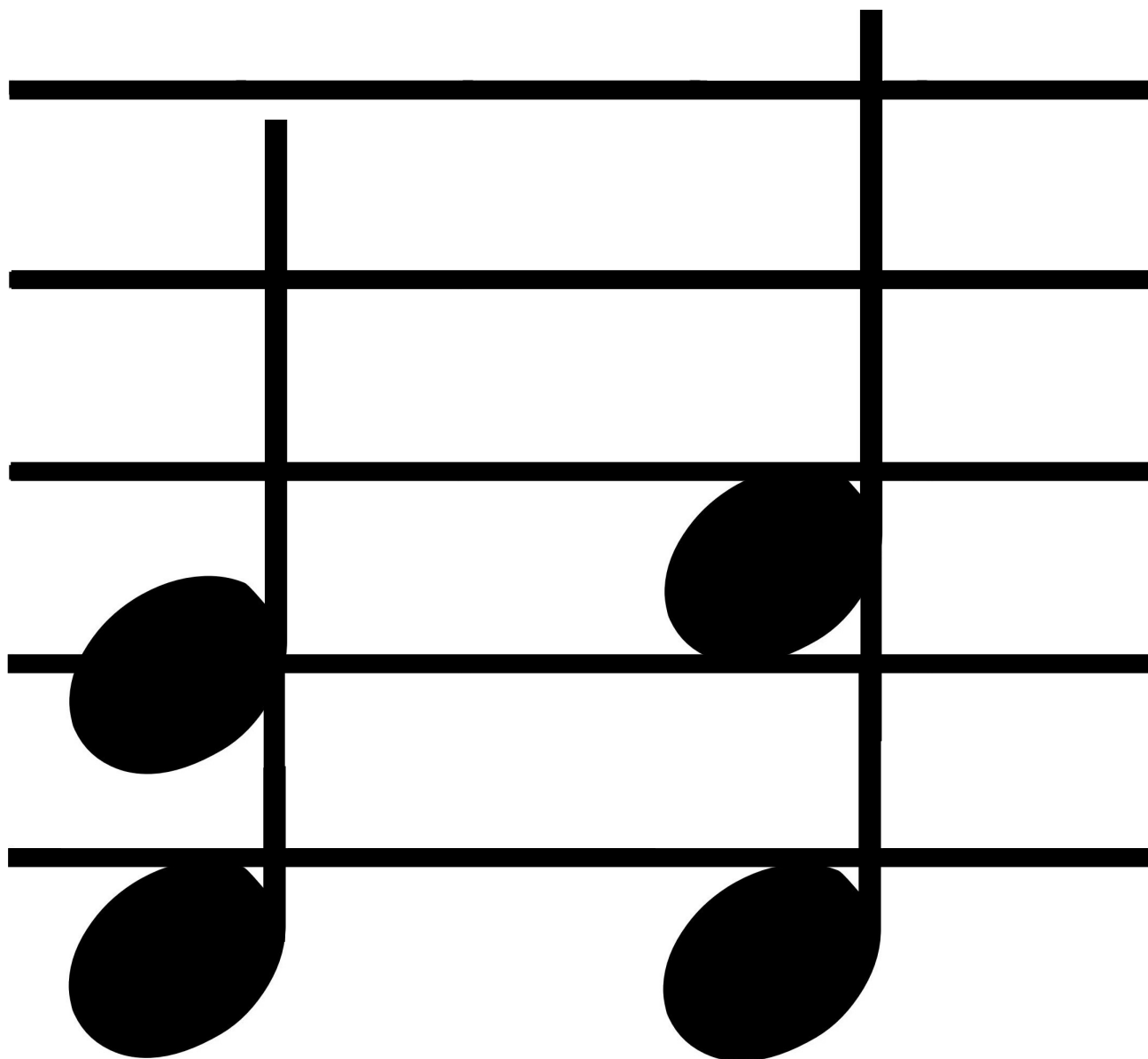
**Interval-**

3rd



**Interval-**

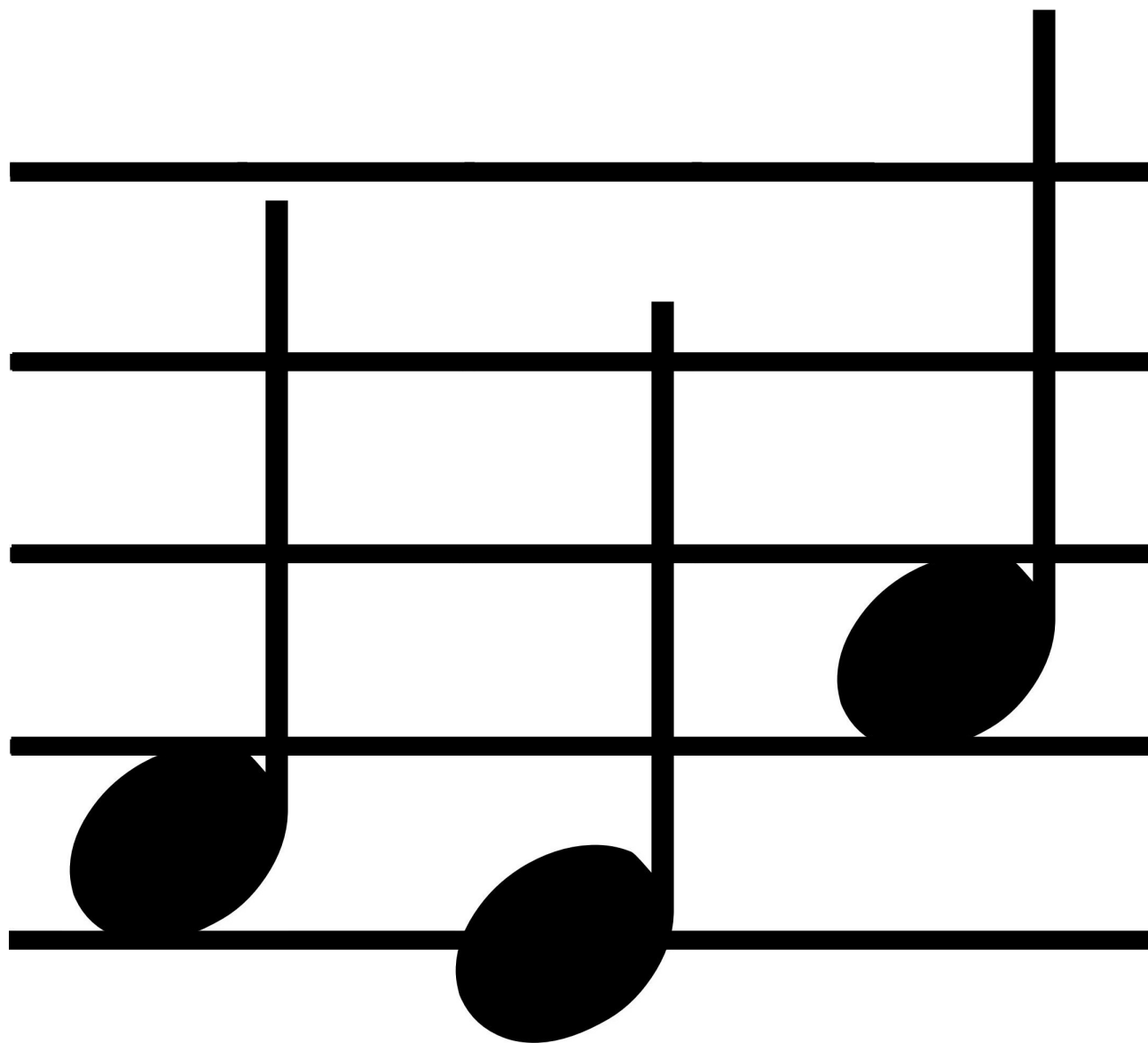
2nd



## **Harmonic Interval:**

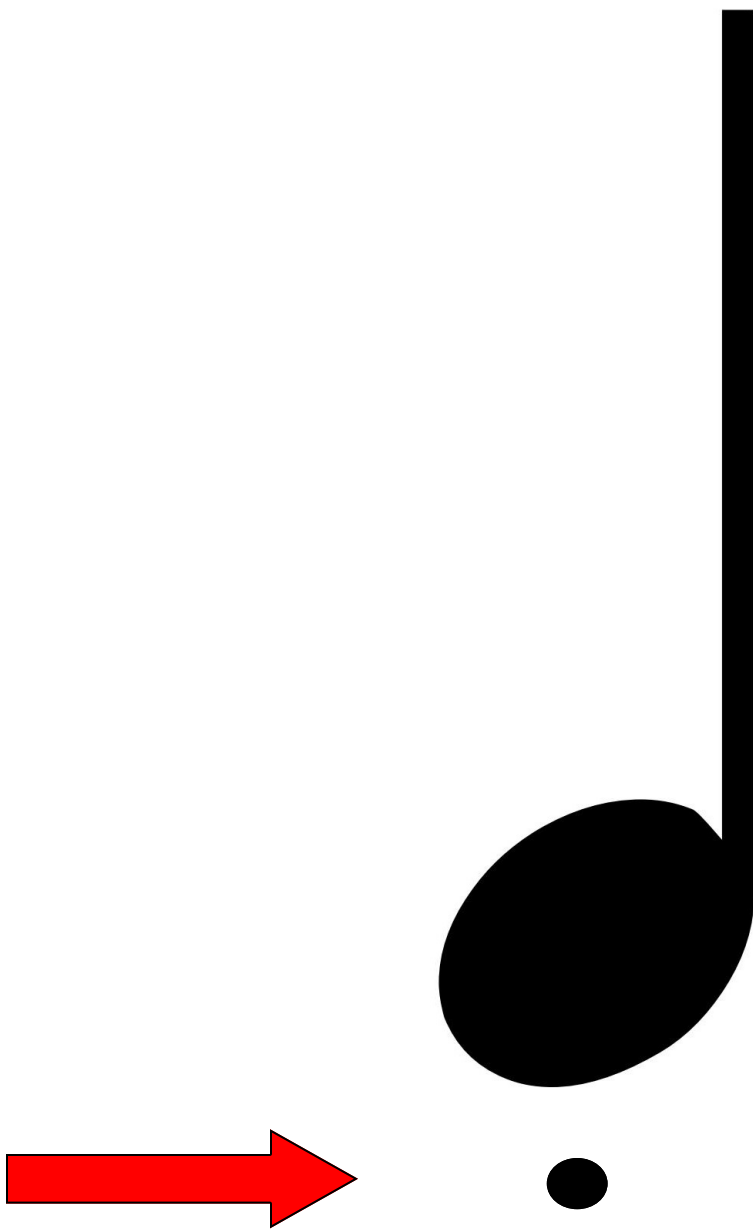
Notes that are played together  
or simultaneously





## **Melodic Interval:**

Notes that are played one  
after another



## **Staccato-**

Note played or sung short and detached from other notes

*Andante*

**Andante-**  
Walking speed

*Moderato*

**Moderato-**  
Moderately



*Allegretto*

**Allegretto-**  
Moderately fast

*Allegro*

**Allegro-**

Fast



# Eighth Note

*One eighth note is half the value of a quarter note.*



7

# Eighth Note Rest

*One eighth note rest is half  
the value of a quarter note.*





*p*

*piano* = *soft*

*f*

*forte* = *loud*

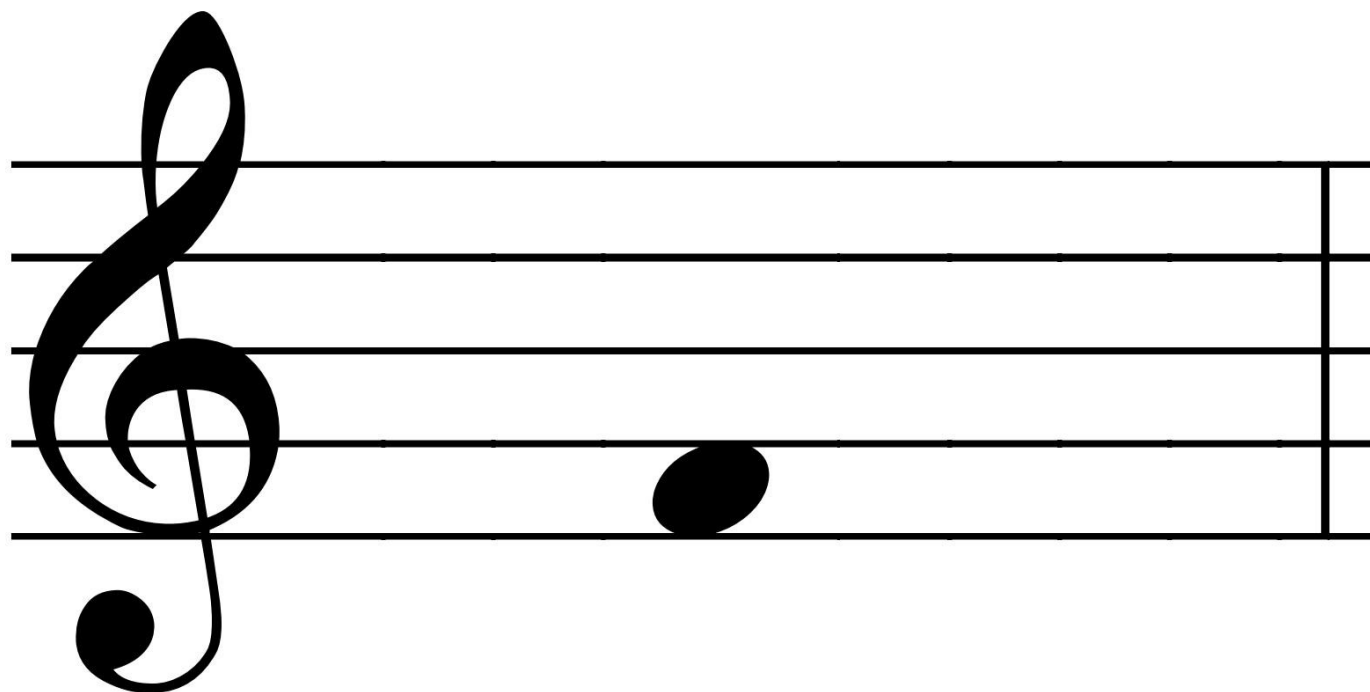
*mf*

*mezzo forte = medium loud*

*mp*

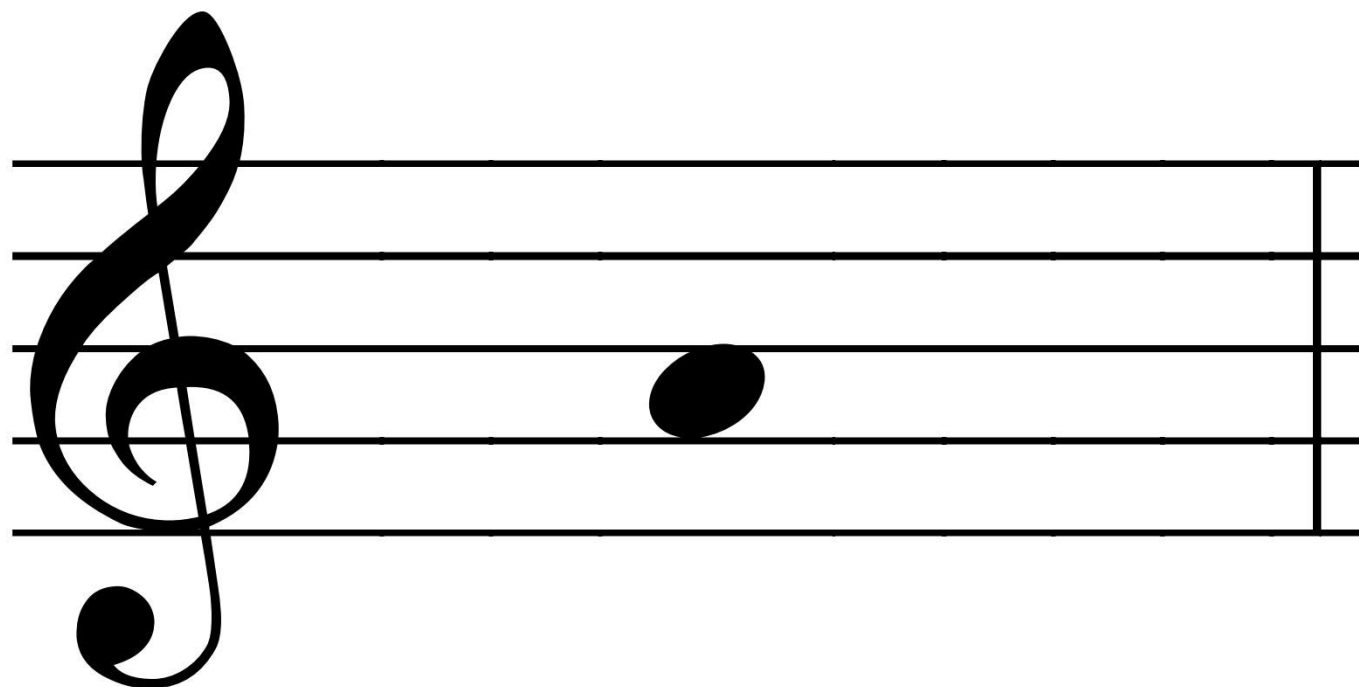
*mezzo piano = medium soft*





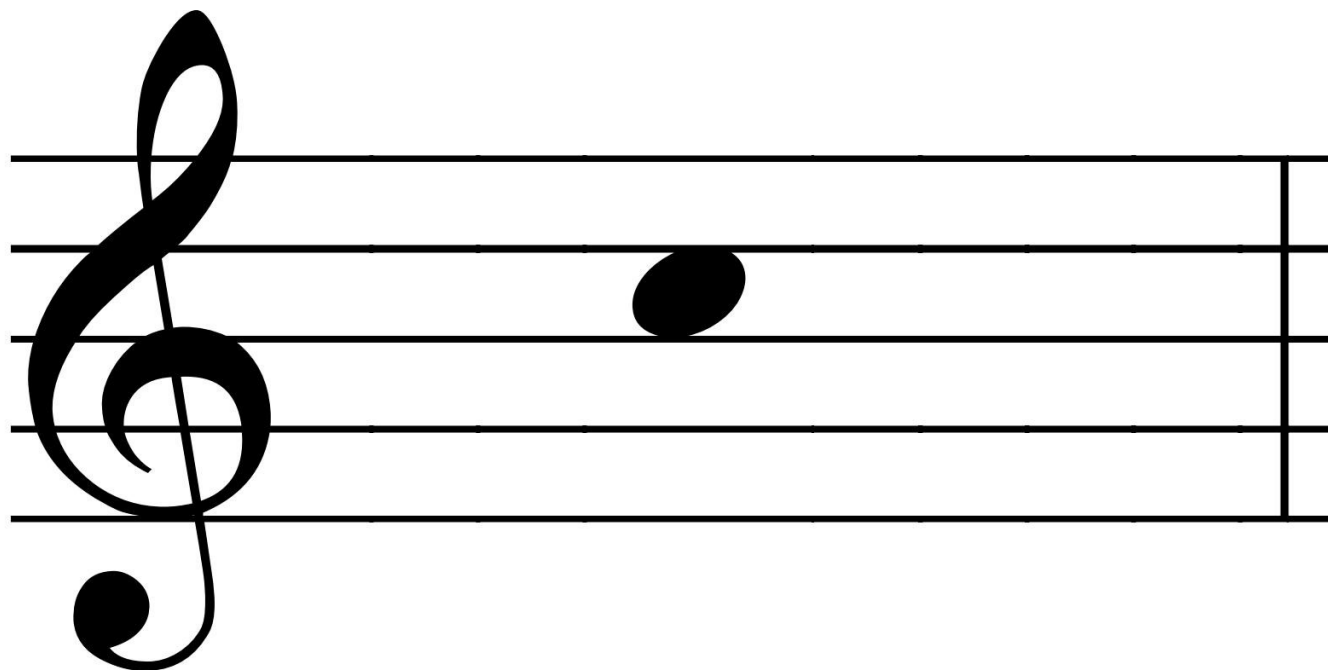
Note name-

F



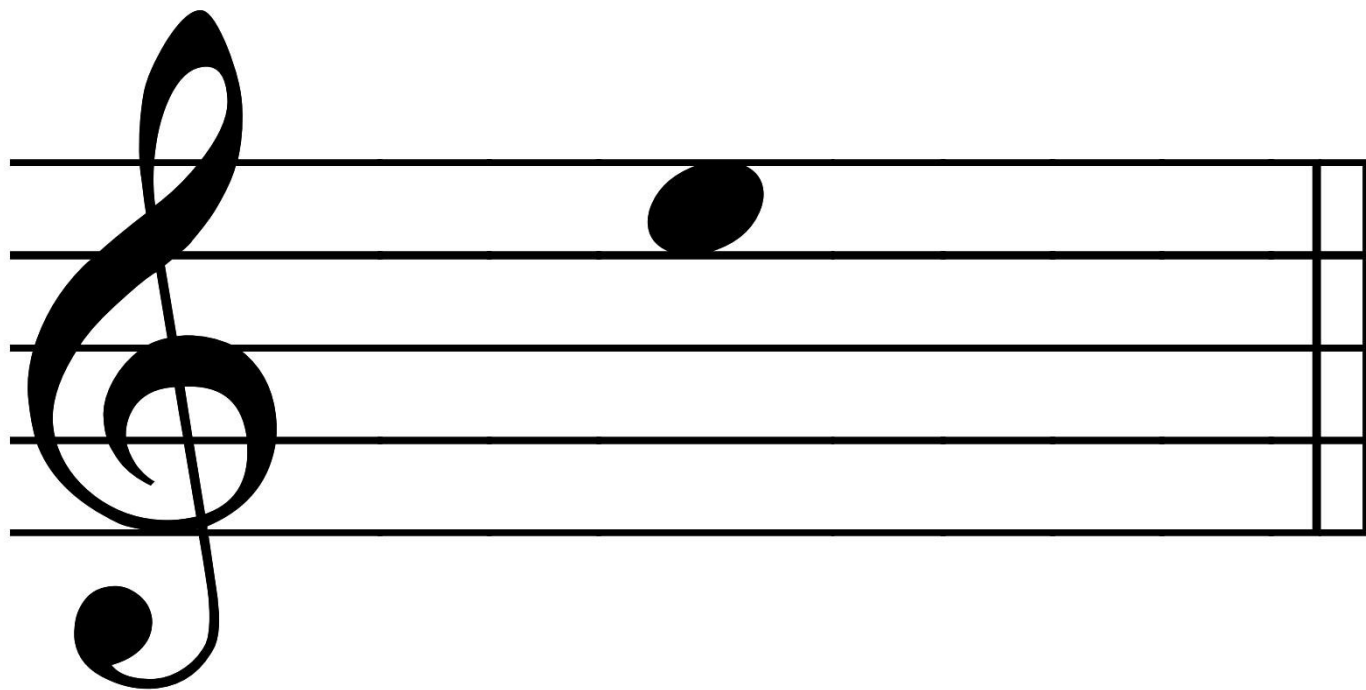
Note name-

A



Note name-

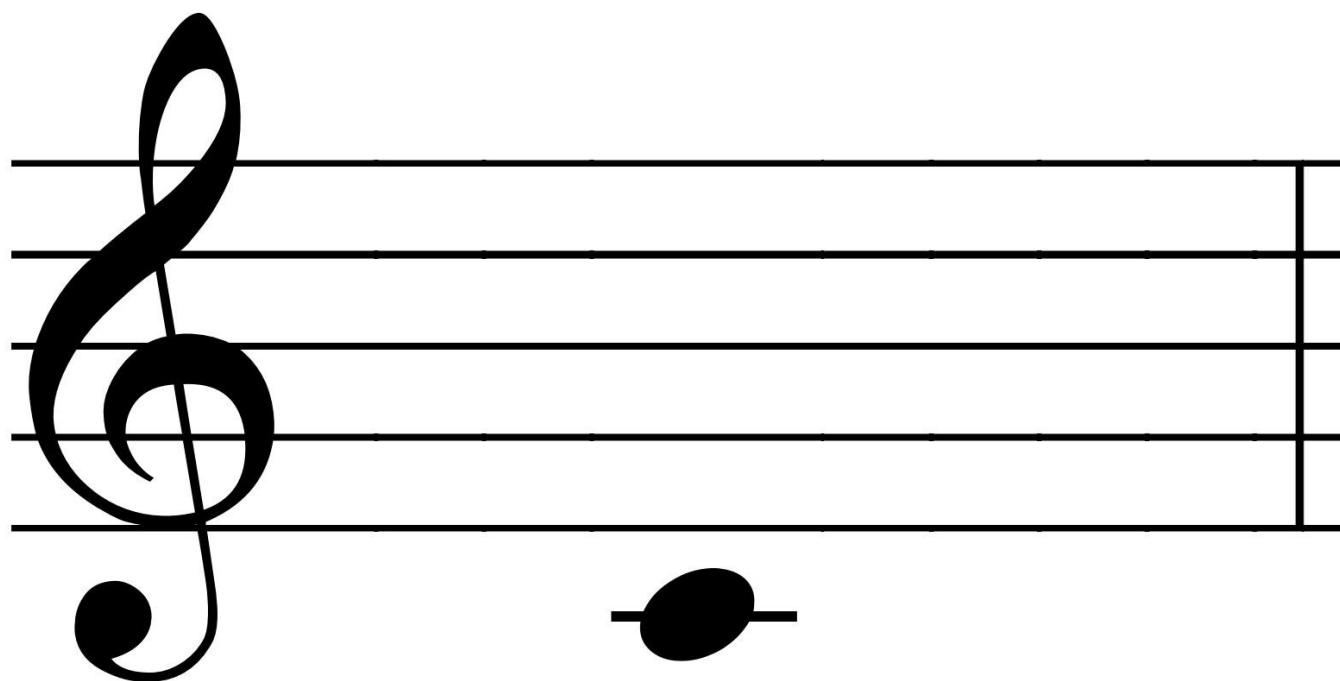
C



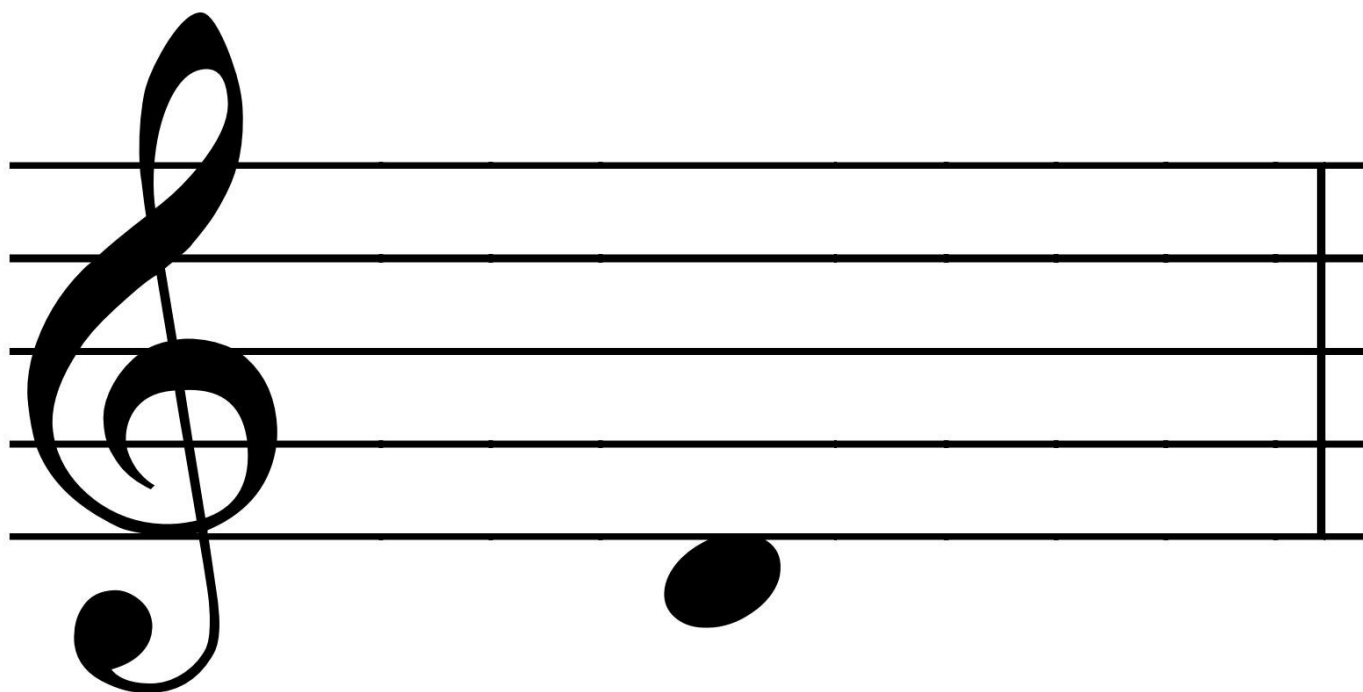
Note name-

E



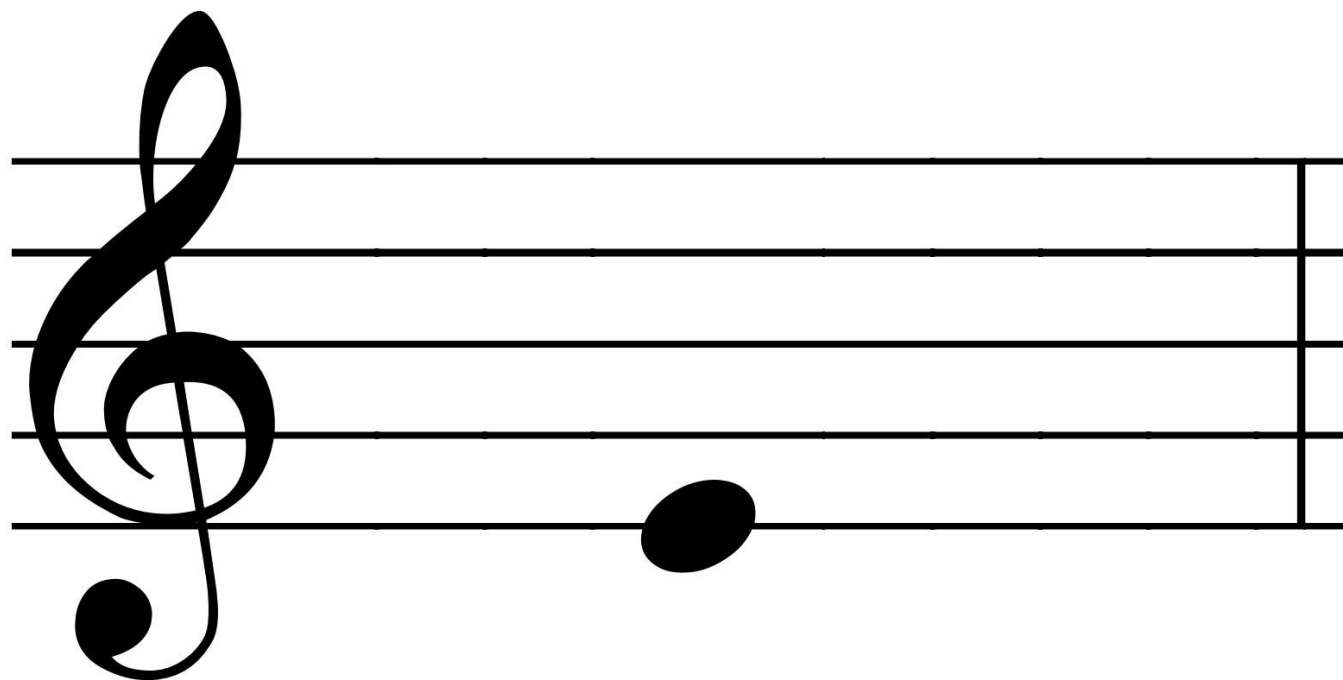


Note name-  
Middle C



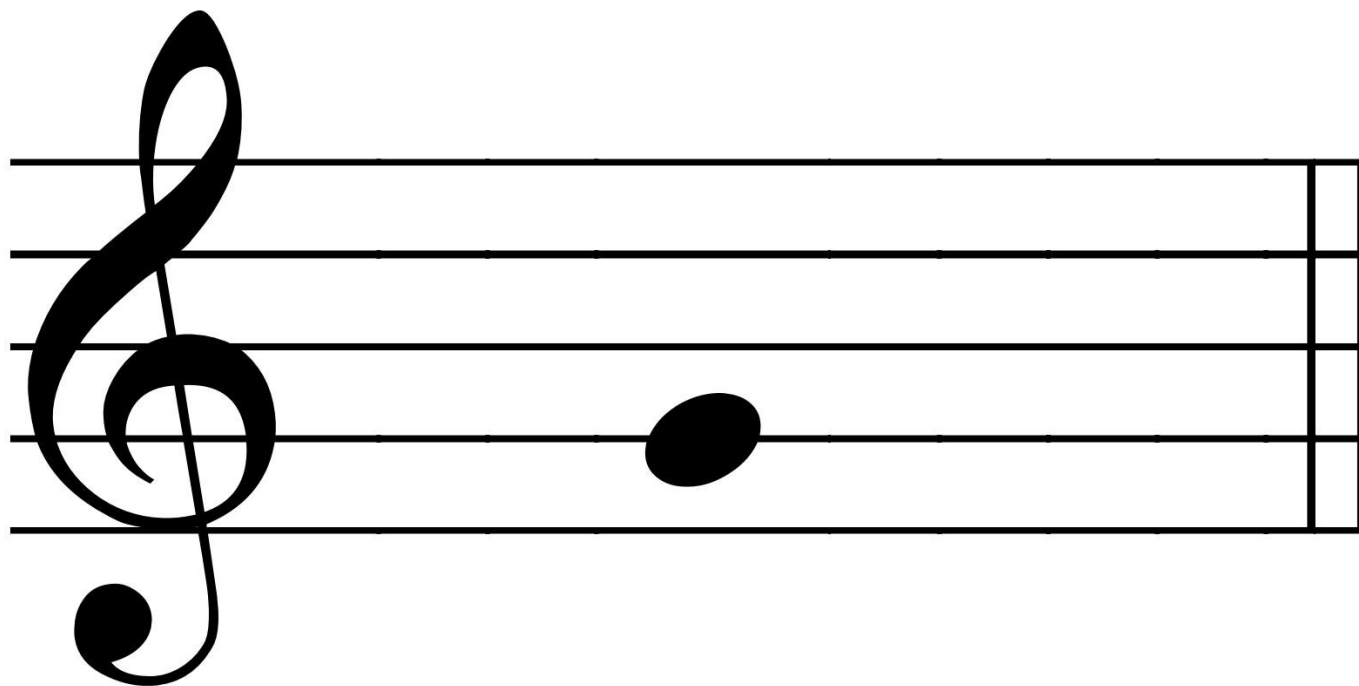
Note name-

D



Note name-

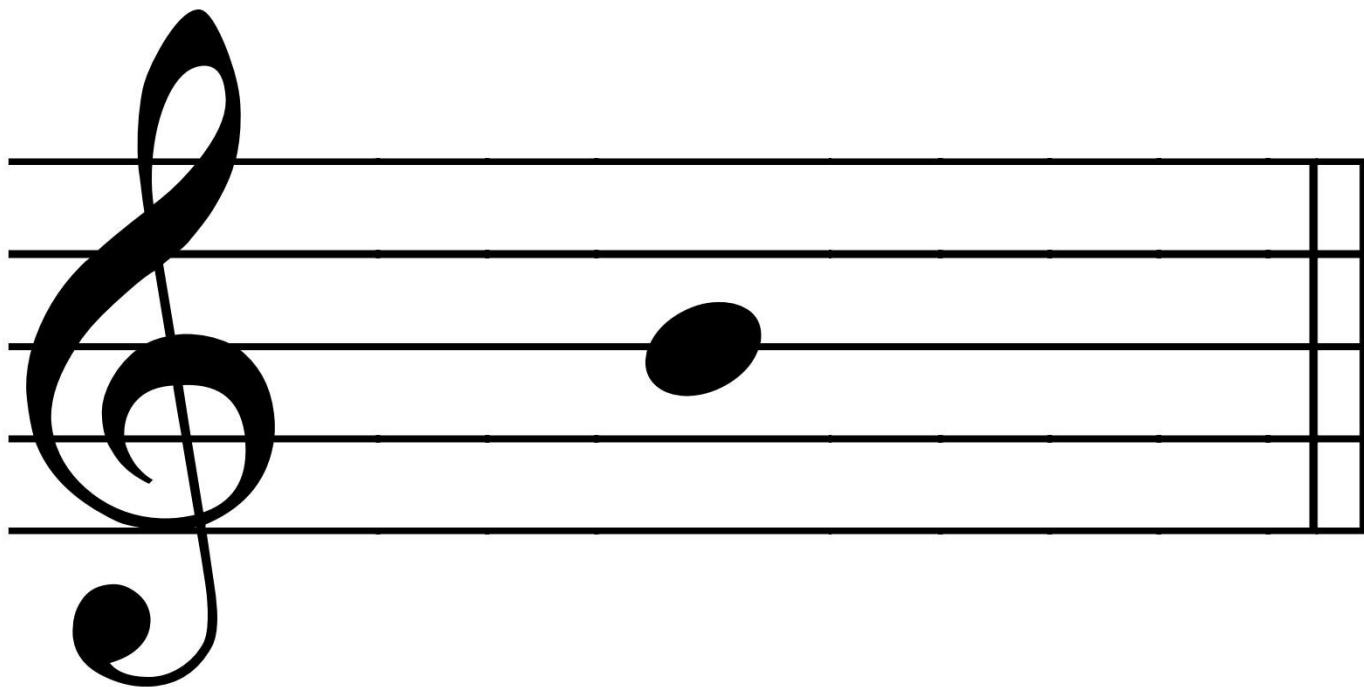
E



Note name-

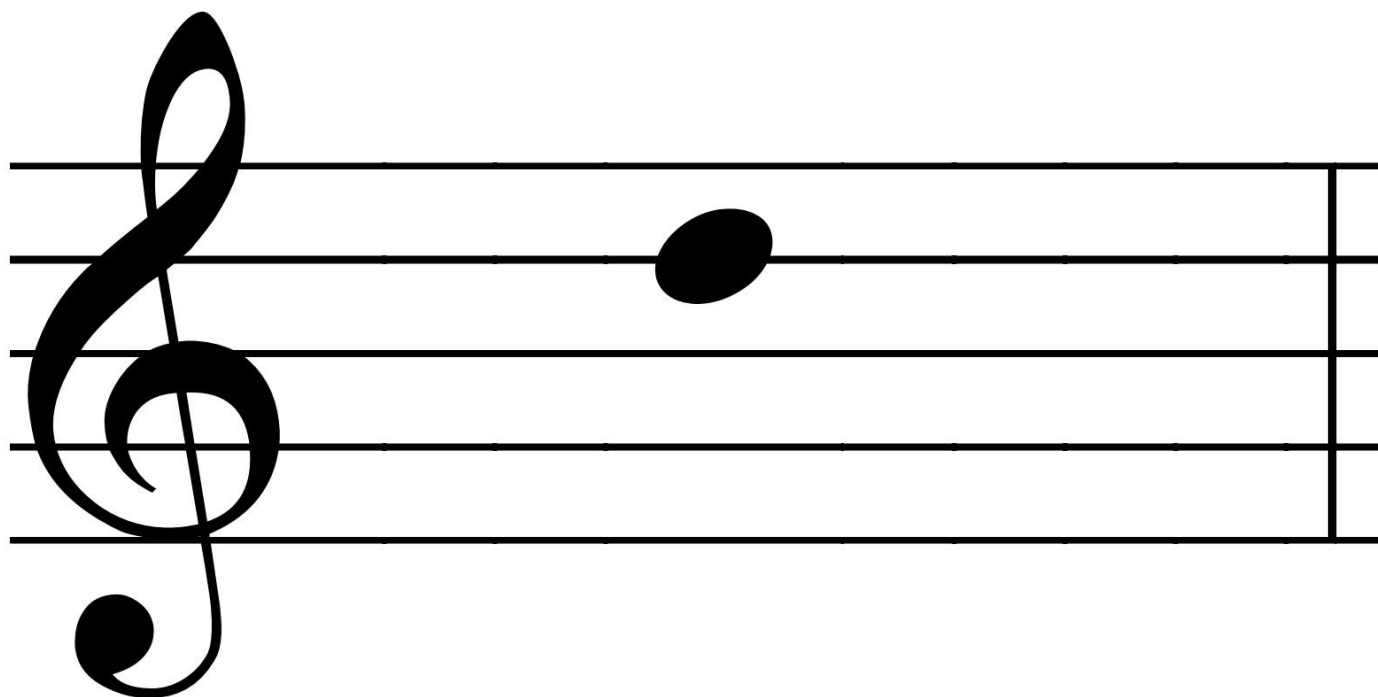
G





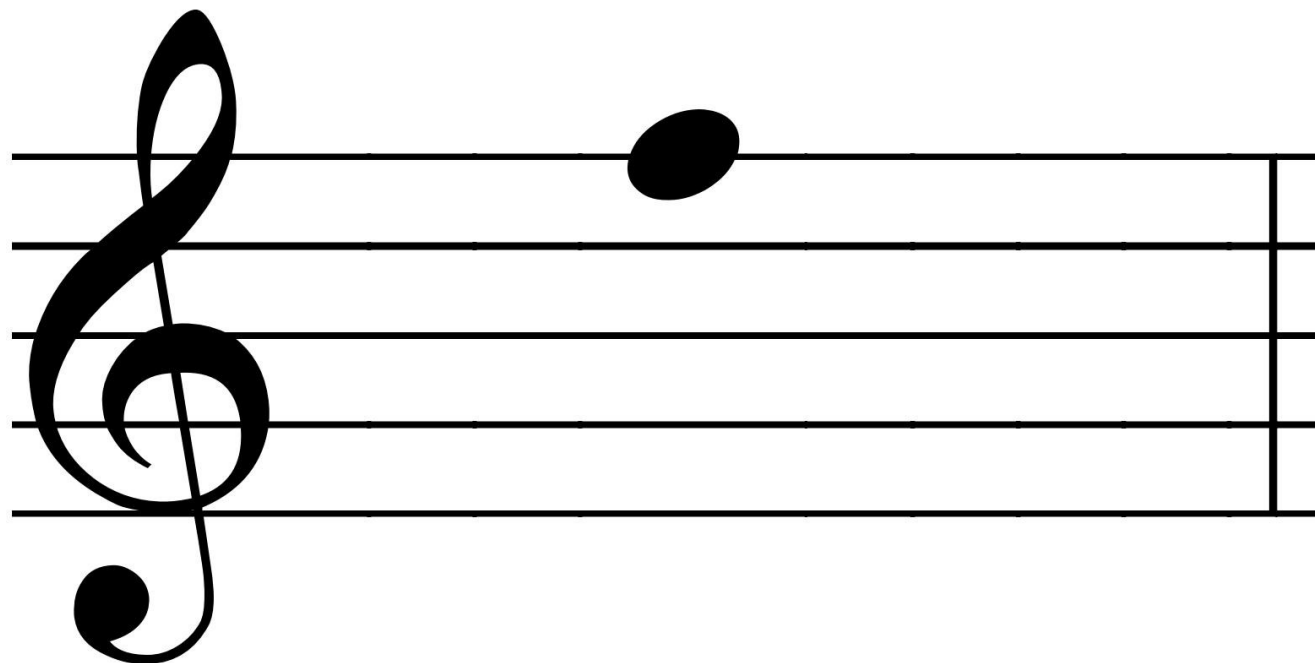
Note name-

B



Note name-

D



Note name-

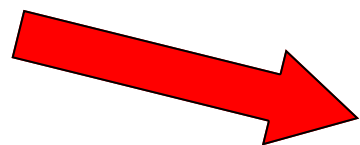
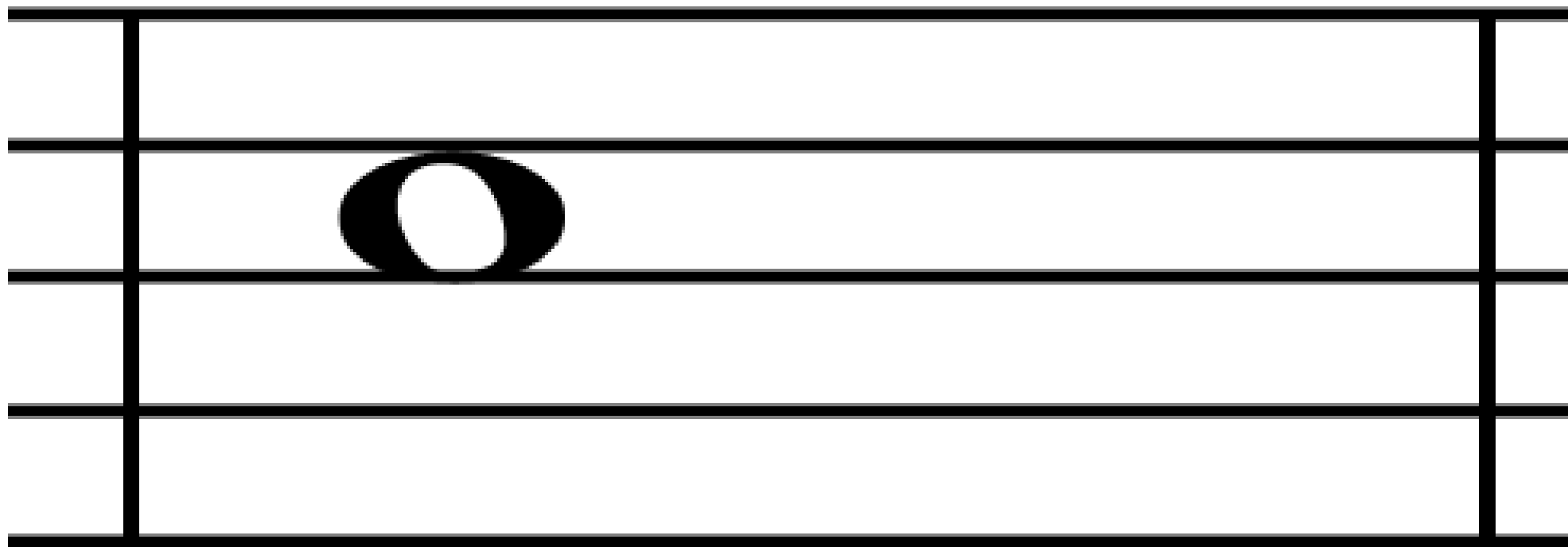
F



## **Accent-**

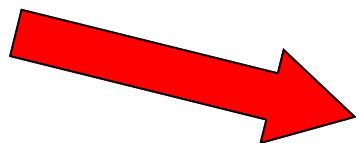
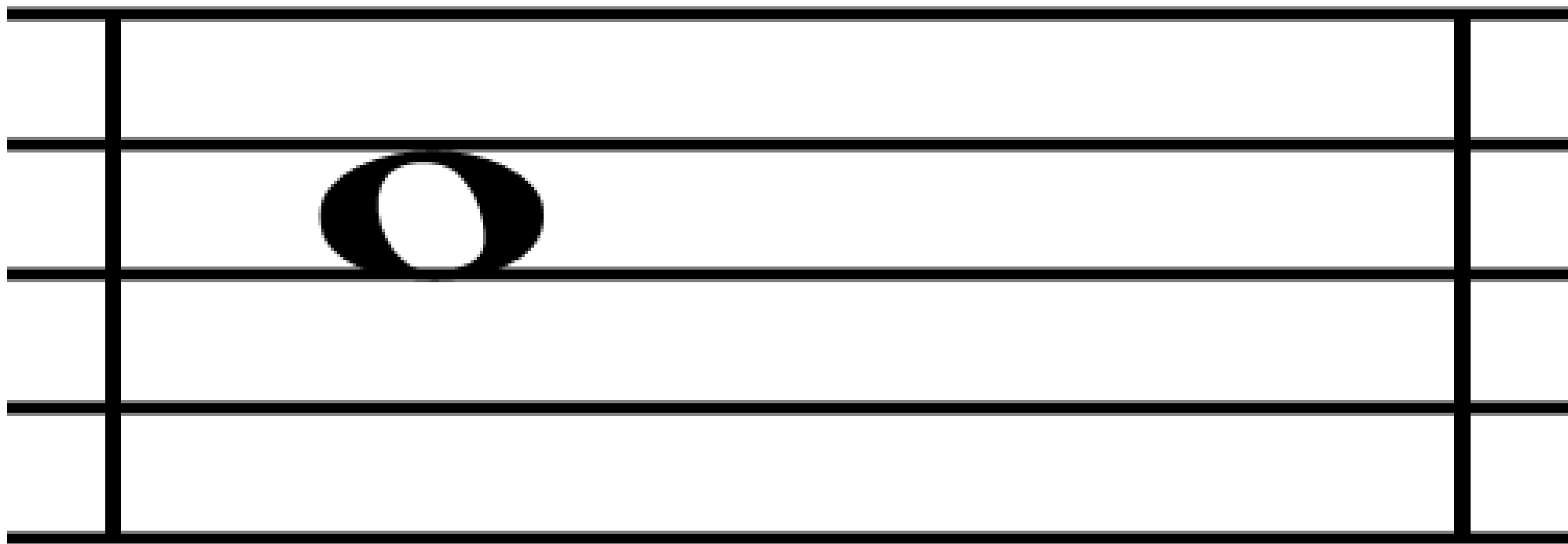
Note played or sung stronger or with more emphasis than other notes





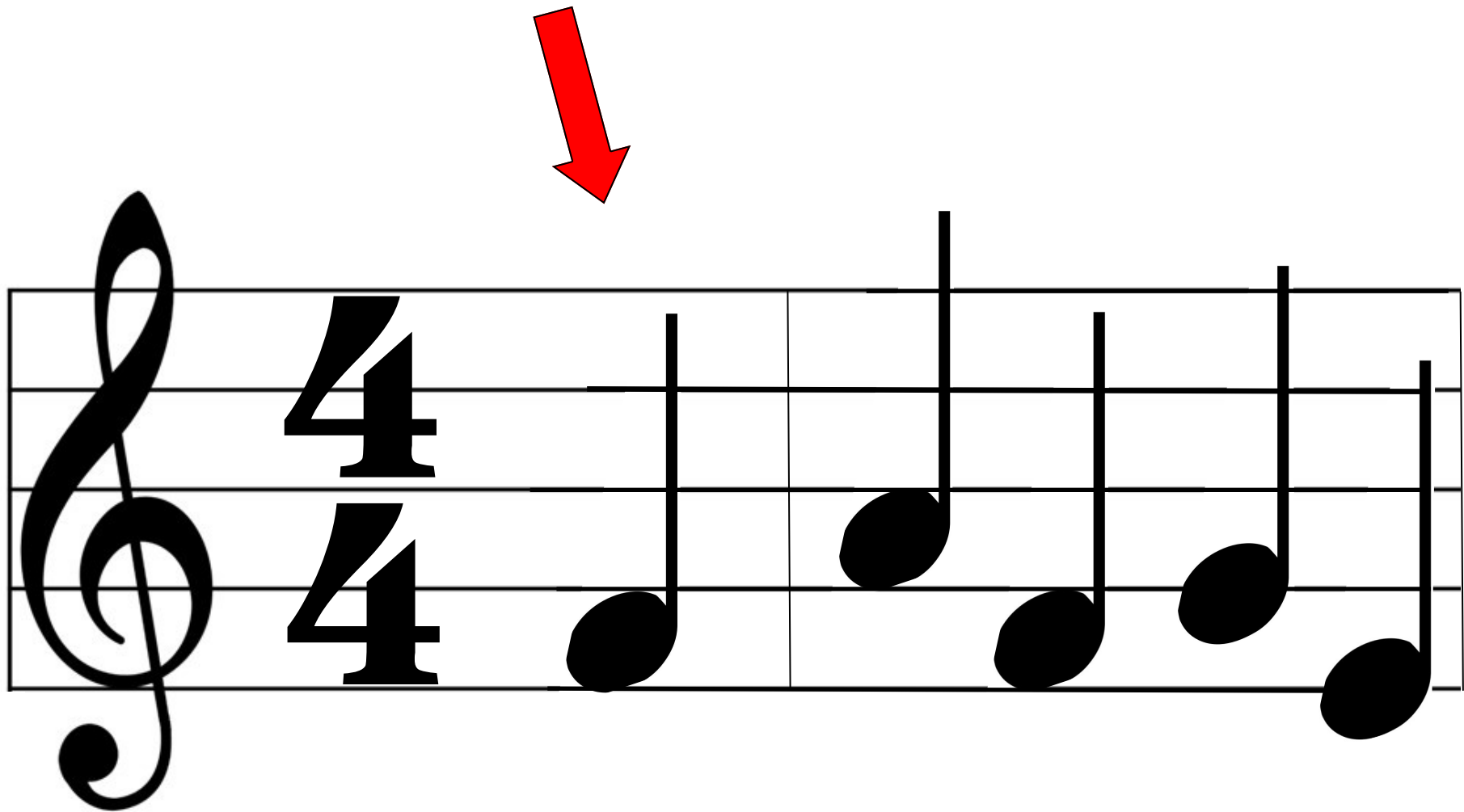
## **Crescendo-**

Gradually increase volume or  
intensity



## **Decrescendo-**

Gradually decrease volume or  
intensity



## **Upbeat-**

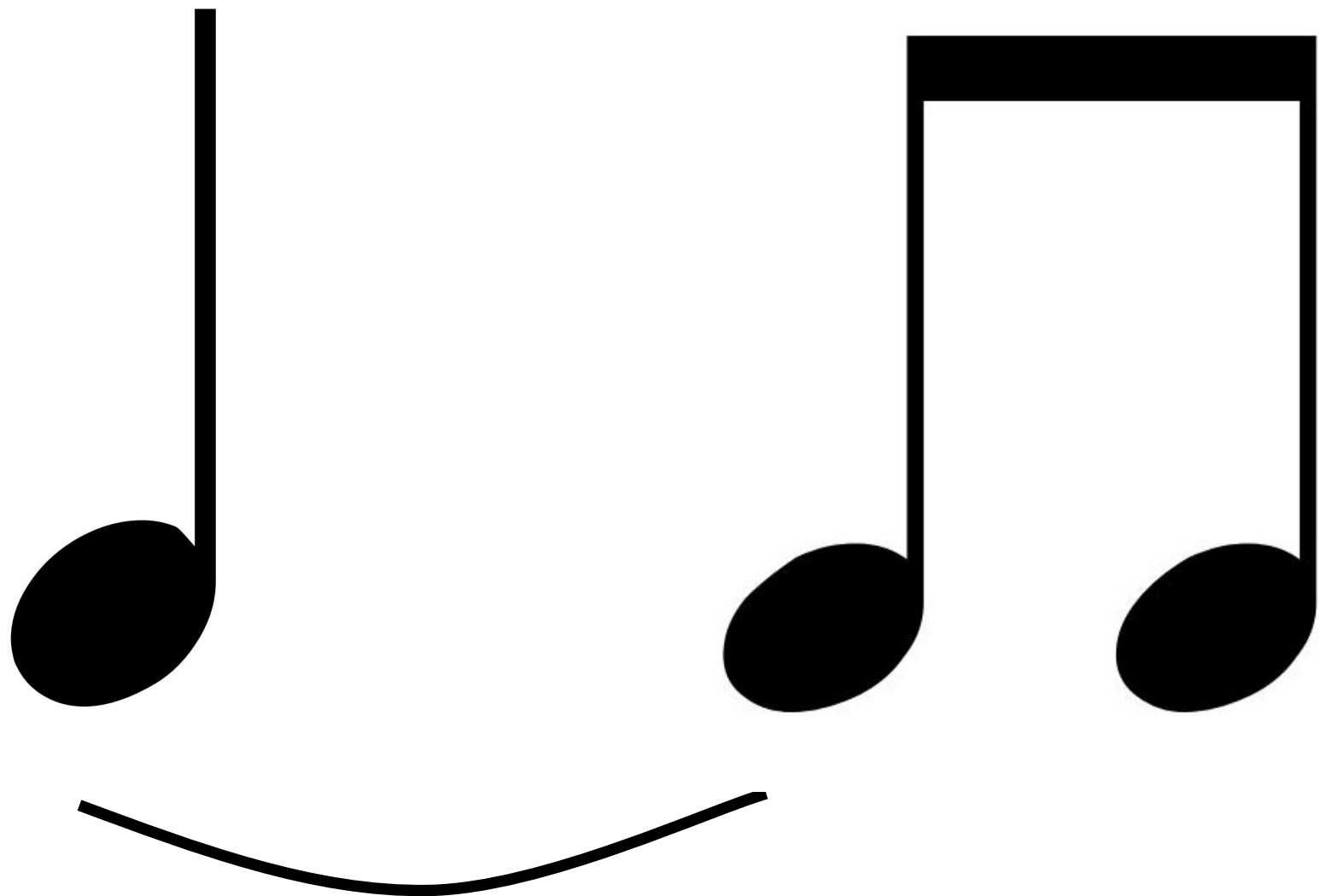
A note or notes that come before the first full measure

# Transposition

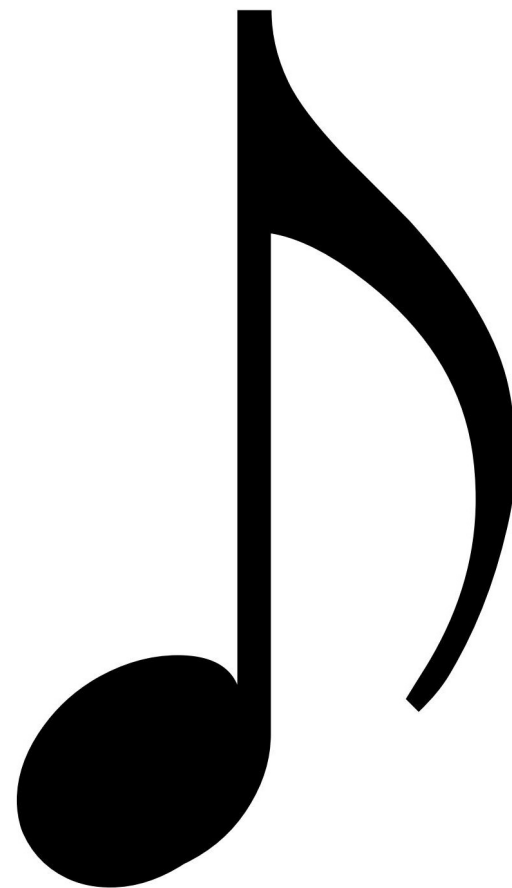
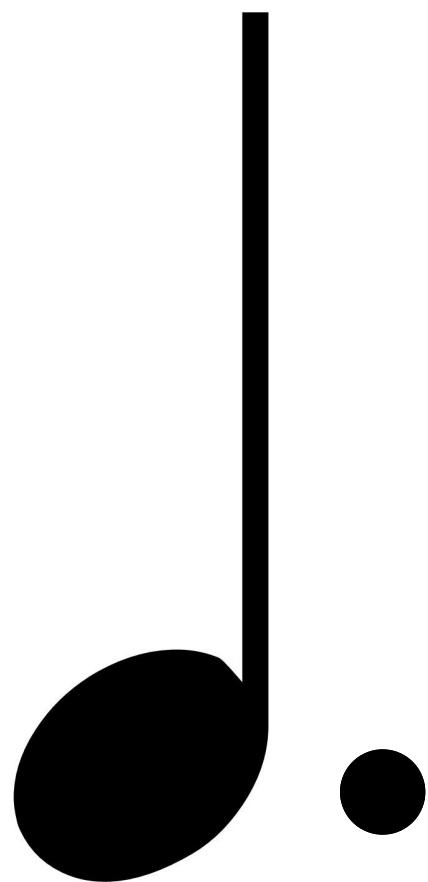
## **Transposition-**

Process of changing the key of a piece of music.











**D.C. al Fine**

## **D.C. al Fine-**

Da Capo al Fine— go back to the beginning and sing/play to the word Fine in the music.

**rit.**

**ritardando**

**Rit.-**

Gradually decrease or slow down  
the tempo