

26 EDGEWATER

FLOOR PLANS

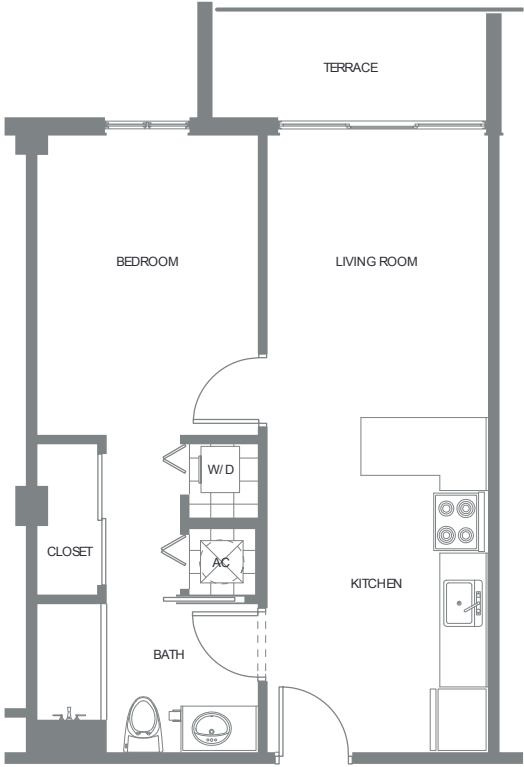
1 BEDROOM/ 1 BATHROOM

LINE 08/09/ 13/ 14		
RESIDENCE	560 SF	52.02 M ²
TERRACE	38 SF	3.53 M ²
TOTAL	598 SF	55.55 M ²

LINE 15		
RESIDENCE	560 SF	52.02 M ²
TERRACE	50 SF	4.64 M ²
TOTAL	610 SF	56.66 M ²

LINE 04/ 05/ 18		
RESIDENCE	560 SF	52.02 M ²
TERRACE	64 SF	5.94 M ²
TOTAL	624 SF	57.96 M ²

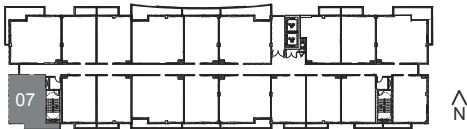
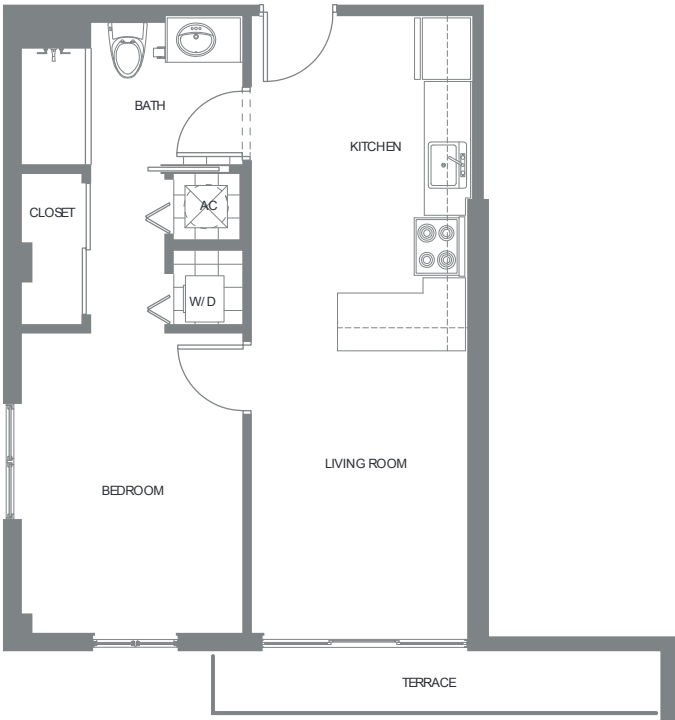
LINE 02, 11		
RESIDENCE	560 SF	52.02 M ²
TERRACE	66 SF	6.13 M ²
TOTAL	626 SF	58.15 M ²



*PLANS, MATERIALS AND SPECIFICATIONS ARE SUBJECT TO ARCHITECTURAL AND OTHER REVISIONS AT THE SOLE DISCRETION OF THE DEVELOPER, BUILDER OR ARCHITECT, OR AS MAY BE REQUESTED BY LAW. FLOOR PLANS SHOWN ARE NOT OPPORTUNITY TO ANY PARTICULAR SCALE. ALL DIMENSIONS ARE MEASURED TO THE EXTERIOR BOUNDARIES OF THE EXTERIOR WALLS, CORRIDOR WALLS AND TO THE CENTERLINE OF INTERIOR PARTITION WALLS AND MAY VARY FROM THE DESCRIPTION AND DEFINITION OF THE UNIT SET FORTH IN THE DECLARATION. ALL DIMENSIONS ARE APPROXIMATE AND ALL FLOOR PLANS AND DEVELOPMENT PLANS ARE SUBJECT TO CHANGE. EQUAL HOUSING OPPORTUNITY: ORAL REPRESENTATIONS CANNOT BE RELIED UPON AS CORRECTLY STATING REPRESENTATIONS OF THE DEVELOPER. FOR CORRECT REPRESENTATIONS, MAKE REFERENCE TO THE DOCUMENTS REQUIRED BY SECTION 761.05, FLORIDA STATUTES, TO BE FURNISHED BY THE DEVELOPER TO A BUYER OR LESSEE. NOT AN OFFER OR SOLICITATION WHERE PROHIBITED BY STATE STATUTES. ALL OTHERS ARE SUBJECT TO THE TERMS AND CONDITIONS OF ANY SALES OR RESERVATION AGREEMENT WITH THE DEVELOPER. AVAILABILITY AND PRICES OF RESIDENCES ARE SUBJECT TO CHANGE WITHOUT NOTICE. WE ARE PLEDGED TO THE LETTER AND SPIRIT OF U.S. POLICY FOR THE ACHIEVEMENT OF EQUAL HOUSING OPPORTUNITY THROUGHOUT THE NATION. WE ENCOURAGE AND SUPPORT AN AFFIRMATIVE ADVERTISING AND MARKETING PROGRAM IN WHICH THERE ARE NO BARRIERS TO OBTAINING HOUSING BECAUSE OF RACE, COLOR, RELIGION, SEX, HANDICAP, FAMILIAL STATUS OR NATIONAL ORIGIN. PLAN DRAWN NOT TO SCALE.

1 BEDROOM/ 1 BATHROOM

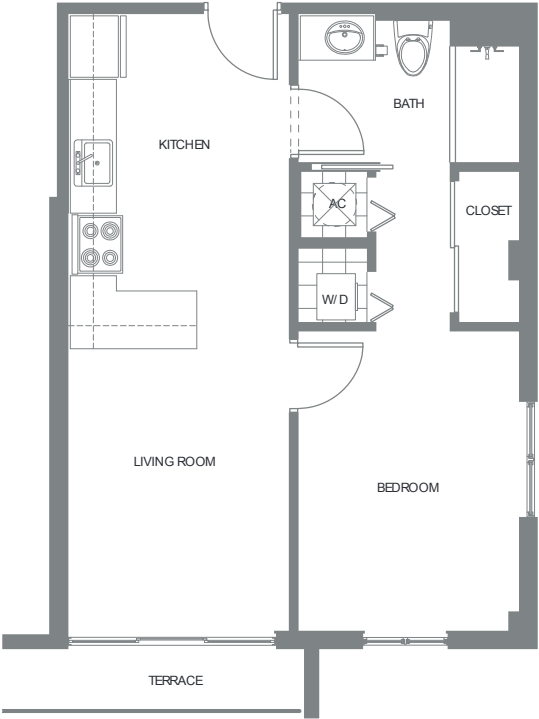
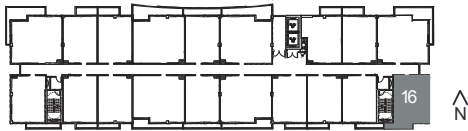
LINE 07		
RESIDENCE	568 SF	52.76 M ²
TERRACE	61 SF	5.66 M ²
TOTAL	629 SF	58.42 M ²



*PLANS, MATERIALS AND SPECIFICATIONS ARE SUBJECT TO ARCHITECTURAL AND OTHER REVISIONS AT THE SOLE DISCRETION OF THE DEVELOPER, BUILDER OR ARCHITECT, OR AS MAY BE REQUESTED BY LAW. FLOOR PLANS SHOWN ARE NOT OPPORTUNITY TO ANY PARTICULAR SCALE. ALL DIMENSIONS ARE MEASURED TO THE EXTERIOR BOUNDARIES OF THE EXTERIOR WALLS, CORRIDOR WALLS AND TO THE CENTERLINE OF INTERIOR PARTITION WALLS AND MAY VARY FROM THE DESCRIPTION AND DEFINITION OF THE UNIT SET FORTH IN THE DECLARATION. ALL DIMENSIONS ARE APPROXIMATE AND ALL FLOOR PLANS AND DEVELOPMENT PLANS ARE SUBJECT TO CHANGE. EQUAL HOUSING OPPORTUNITY: ORAL REPRESENTATIONS CANNOT BE RELIED UPON AS CORRECTLY STATING REPRESENTATIONS OF THE DEVELOPER. FOR CORRECT REPRESENTATIONS, MAKE REFERENCE TO THE DOCUMENTS REQUIRED BY SECTION 781.05, FLORIDA STATUTES, TO BE FURNISHED BY THE DEVELOPER TO A BUYER OR LESSEE. NOT AN OFFER OR SOLICITATION WHERE PROHIBITED BY STATE STATUTES. ALL OTHERS ARE SUBJECT TO THE TERMS AND CONDITIONS OF ANY SALES OR RESERVATION AGREEMENT WITH THE DEVELOPER. AVAILABILITY AND PRICES OF RESIDENCES ARE SUBJECT TO CHANGE WITHOUT NOTICE. WE ARE PLEDGED TO THE LETTER AND SPIRIT OF U.S. POLICY FOR THE ACHIEVEMENT OF EQUAL HOUSING OPPORTUNITY THROUGHOUT THE NATION. WE ENCOURAGE AND SUPPORT AN AFFIRMATIVE ADVERTISING AND MARKETING PROGRAM IN WHICH THERE ARE NO BARRIERS TO OBTAINING HOUSING BECAUSE OF RACE, COLOR, RELIGION, SEX, HANDICAP, FAMILIAL STATUS OR NATIONAL ORIGIN. PLAN DRAWN NOT TO SCALE.

1 BEDROOM/ 1 BATHROOM

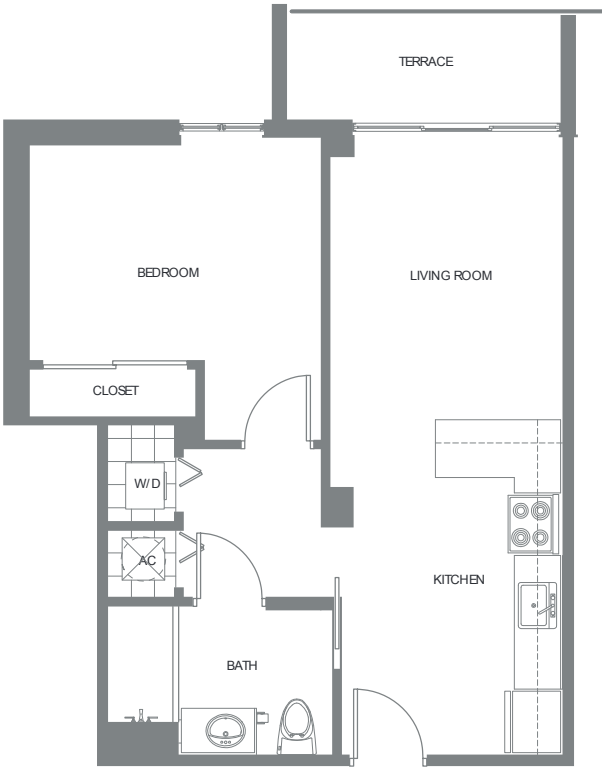
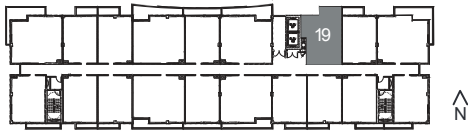
LINE 16		
RESIDENCE	574 SF	53.32 M ²
TERRACE	50 SF	4.64 M ²
TOTAL	624 SF	57.96 M ²



*PLANS, MATERIALS AND SPECIFICATIONS ARE SUBJECT TO ARCHITECTURAL AND OTHER REVISIONS AT THE SOLE DISCRETION OF THE DEVELOPER, BUILDER OR ARCHITECT, OR AS MAY BE REQUESTED BY LAW. FLOOR PLANS SHOWN ARE NOT OPPORTUNITY TO ANY PARTICULAR SCALE. ALL DIMENSIONS ARE MEASURED TO THE EXTERIOR BOUNDARIES OF THE EXTERIOR WALLS, CORRIDOR WALLS AND TO THE CENTERLINE OF INTERIOR PARTITION WALLS AND MAY VARY FROM THE DESCRIPTION AND DEFINITION OF THE UNIT SET FORTH IN THE DECLARATION. ALL DIMENSIONS ARE APPROXIMATE AND ALL FLOOR PLANS AND DEVELOPMENT PLANS ARE SUBJECT TO CHANGE. EQUAL HOUSING OPPORTUNITY: ORAL REPRESENTATIONS CANNOT BE RELIED UPON AS CORRECTLY STATING REPRESENTATIONS OF THE DEVELOPER. FOR CORRECT REPRESENTATIONS, MAKE REFERENCE TO THE DOCUMENTS REQUIRED BY SECTION 781.05, FLORIDA STATUTES, TO BE FURNISHED BY THE DEVELOPER TO A BUYER OR LESSEE. NOT AN OFFER OR SOLICITATION WHERE PROHIBITED BY STATE STATUTES. ALL OTHERS ARE SUBJECT TO THE TERMS AND CONDITIONS OF ANY SALES OR RESERVATION AGREEMENT WITH THE DEVELOPER. AVAILABILITY AND PRICES OF RESIDENCES ARE SUBJECT TO CHANGE WITHOUT NOTICE. WE ARE PLEDGED TO THE LETTER AND SPIRIT OF U.S. POLICY FOR THE ACHIEVEMENT OF EQUAL HOUSING OPPORTUNITY THROUGHOUT THE NATION. WE ENCOURAGE AND SUPPORT AN AFFIRMATIVE ADVERTISING AND MARKETING PROGRAM IN WHICH THERE ARE NO BARRIERS TO OBTAINING HOUSING BECAUSE OF RACE, COLOR, RELIGION, SEX, HANDICAP, FAMILIAL STATUS OR NATIONAL ORIGIN. PLAN DRAWN NOT TO SCALE.

1 BEDROOM/ 1 BATHROOM

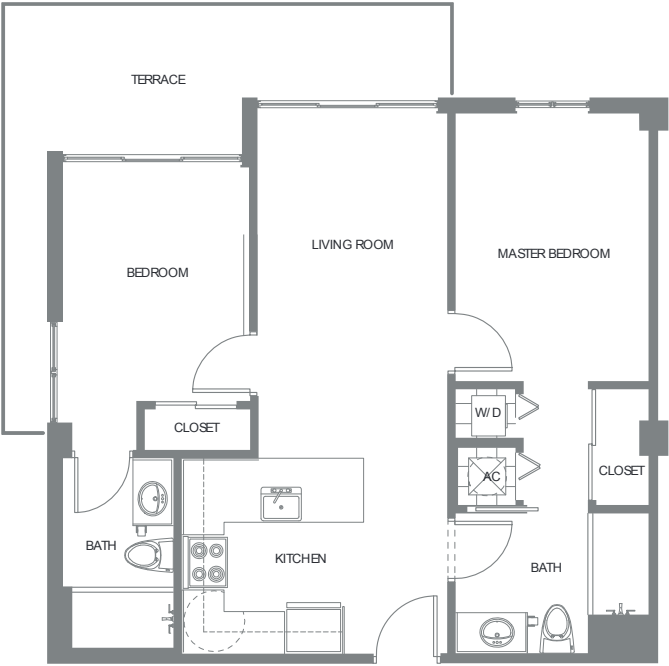
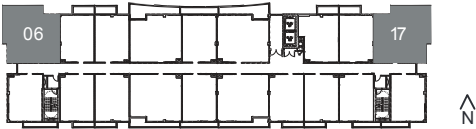
LINE 19		
RESIDENCE	605SF	56.20 M ²
TERRACE	64 SF	5.94 M ²
TOTAL	669 SF	62.14 M ²



*PLANS, MATERIALS AND SPECIFICATIONS ARE SUBJECT TO ARCHITECTURAL AND OTHER REVISIONS AT THE SOLE DISCRETION OF THE DEVELOPER, BUILDER OR ARCHITECT, OR AS MAY BE REQUESTED BY LAW. FLOOR PLANS SHOWN ARE NOT OPPORTUNITY TO ANY PARTICULAR SCALE. ALL DIMENSIONS ARE MEASURED TO THE EXTERIOR BOUNDARIES OF THE EXTERIOR WALLS, CORRIDOR WALLS AND TO THE CENTERLINE OF INTERIOR PARTITION WALLS AND MAY VARY FROM THE DESCRIPTION AND DEFINITION OF THE UNIT SET FORTH IN THE DECLARATION. ALL DIMENSIONS ARE APPROXIMATE AND ALL FLOOR PLANS AND DEVELOPMENT PLANS ARE SUBJECT TO CHANGE. EQUAL HOUSING OPPORTUNITY: ORAL REPRESENTATIONS CANNOT BE RELIED UPON AS CORRECTLY STATING REPRESENTATIONS OF THE DEVELOPER. FOR CORRECT REPRESENTATIONS, MAKE REFERENCE TO THE DOCUMENTS REQUIRED BY SECTION 718.03(1)(F) FLORIDA STATUTES TO BE FURNISHED BY THE DEVELOPER TO A BUYER OR LESSEE. NOT AN OFFER OR SOLICITATION WHERE PROHIBITED BY STATE STATUTES. ALL OTHERS ARE SUBJECT TO THE TERMS AND CONDITIONS OF ANY SALES OR RESERVATION AGREEMENT WITH THE DEVELOPER. AVAILABILITY AND PRICES OF RESIDENCES ARE SUBJECT TO CHANGE WITHOUT NOTICE. WE ARE PLEDGED TO THE LETTER AND SPIRIT OF U.S. POLICY FOR THE ACHIEVEMENT OF EQUAL HOUSING OPPORTUNITY THROUGHOUT THE NATION. WE ENCOURAGE AND SUPPORT AN AFFIRMATIVE ADVERTISING AND MARKETING PROGRAM IN WHICH THERE ARE NO BARRIERS TO OBTAINING HOUSING BECAUSE OF RACE, COLOR, RELIGION, SEX, HANDICAP, FAMILIAL STATUS OR NATIONAL ORIGIN. PLAN DRAWN NOT TO SCALE.

2 BEDROOMS/ 2 BATHROOMS

LINE 06/ 17		
RESIDENCE	814 SF	75.82 M ²
TERRACE	182 SF	16.90 M ²
TOTAL	996 SF	92.72 M ²

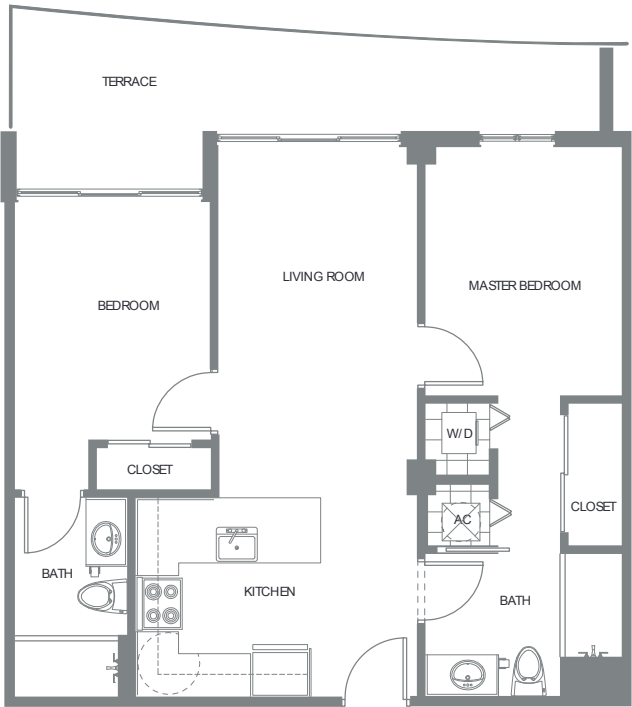
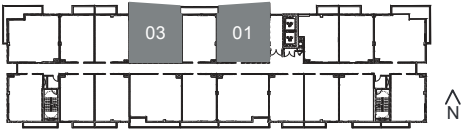


*PLANS, MATERIALS AND SPECIFICATIONS ARE SUBJECT TO ARCHITECTURAL AND OTHER REVISIONS AT THE SOLE DISCRETION OF THE DEVELOPER, BUILDER OR ARCHITECT, OR AS MAY BE REQUESTED BY LAW. FLOOR PLANS SHOWN ARE NOT OPPORTUNITY TO ANY PARTICULAR SCALE. ALL DIMENSIONS ARE MEASURED TO THE EXTERIOR BOUNDARIES OF THE EXTERIOR WALLS, CORRIDOR WALLS AND TO THE CENTERLINE OF INTERIOR PARTITION WALLS AND MAY VARY FROM THE DESCRIPTION AND DEFINITION OF THE UNIT SET FORTH IN THE DECLARATION. ALL DIMENSIONS ARE APPROXIMATE. ALL FLOOR PLANS AND DEVELOPMENT PLANS ARE SUBJECT TO CHANGE. EQUAL HOUSING OPPORTUNITY: ORAL REPRESENTATIONS CANNOT BE RELIED UPON AS CORRECTLY STATING REPRESENTATIONS OF THE DEVELOPER. FOR CORRECT REPRESENTATIONS, MAKE REFERENCE TO THE DOCUMENTS REQUIRED BY SECTION 783.03, FLORIDA STATUTES, TO BE FURNISHED BY THE DEVELOPER TO A BUYER OR LESSEE. NOT AN OFFER OR SOLICITATION WHERE PROHIBITED BY STATE STATUTES. ALL OTHERS ARE SUBJECT TO THE TERMS AND CONDITIONS OF ANY SALES OR RESERVATION AGREEMENT WITH THE DEVELOPER. AVAILABILITY AND PRICES OF RESIDENCES ARE SUBJECT TO CHANGE WITHOUT NOTICE. WE ARE PLEDGED TO THE LETTER AND SPIRIT OF U.S. POLICY FOR THE ACHIEVEMENT OF EQUAL HOUSING OPPORTUNITY THROUGHOUT THE NATION. WE ENCOURAGE AND SUPPORT AN AFFIRMATIVE ADVERTISING AND MARKETING PROGRAM IN WHICH THERE ARE NO BARRIERS TO OBTAINING HOUSING BECAUSE OF RACE, COLOR, RELIGION, SEX, HANDICAP, FAMILIAL STATUS OR NATIONAL ORIGIN. PLAN DRAW NOT TO SCALE.

2 BEDROOMS/ 2 BATHROOMS

LINE 01			
RESIDENCE	821 SF	76.27 M ²	
TERRACE	180 SF	16.72 M ²	
TOTAL	1,001 SF	92.99 M ²	

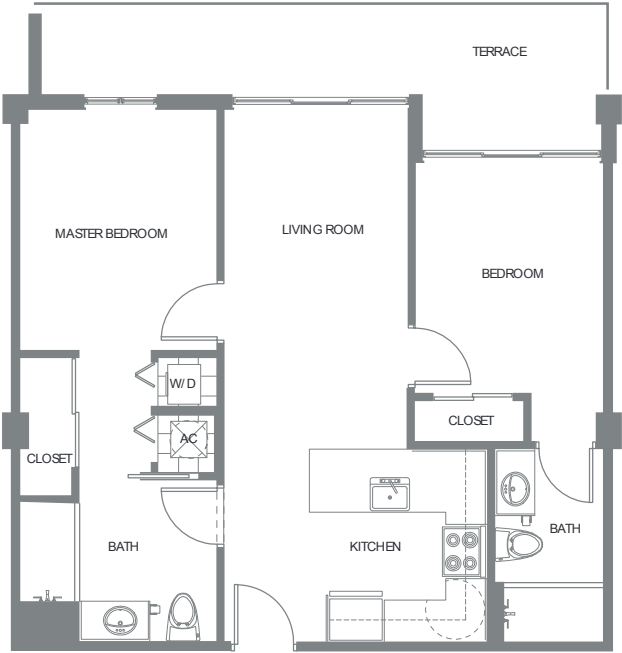
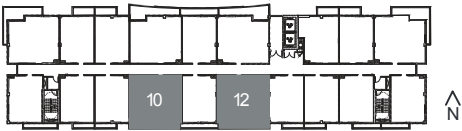
LINE 03			
RESIDENCE	815 SF	75.71 M ²	
TERRACE	180 SF	16.72 M ²	
TOTAL	995 SF	92.43 M ²	



*PLANS, MATERIALS AND SPECIFICATIONS ARE SUBJECT TO ARCHITECTURAL AND OTHER REVISIONS AT THE SOLE DISCRETION OF THE DEVELOPER, BUILDER OR ARCHITECT, OR AS MAY BE REQUESTED BY LAW. FLOOR PLANS SHOWN ARE NOT OPPORTUNITY TO ANY PARTICULAR SCALE. ALL DIMENSIONS ARE MEASURED TO THE EXTERIOR BOUNDARIES OF THE EXTERIOR WALLS, CORRIDOR WALLS AND TO THE CENTERLINE OF INTERIOR PARTITION WALLS AND MAY VARY FROM THE DESCRIPTION AND DEFINITION OF THE UNIT SET FORTH IN THE DECLARATION. ALL DIMENSIONS ARE APPROXIMATE. AND ALL FLOOR PLANS AND DEVELOPMENT PLANS ARE SUBJECT TO CHANGE. EQUAL HOUSING OPPORTUNITY: ORAL REPRESENTATIONS CANNOT BE RELIED UPON AS CORRECTLY STATING REPRESENTATIONS OF THE DEVELOPER. FOR CORRECT REPRESENTATIONS, MAKE REFERENCE TO THE DOCUMENTS REQUIRED BY SECTION 783.03, FLORIDA STATUTES, TO BE FURNISHED BY THE DEVELOPER TO A BUYER OR LESSEE. NOT AN OFFER OR SOLICITATION WHERE PROHIBITED BY STATE STATUTES. ALL OTHERS ARE SUBJECT TO THE TERMS AND CONDITIONS OF ANY SALES OR RESERVATION AGREEMENT WITH THE DEVELOPER. AVAILABILITY AND PRICES OF RESIDENCES ARE SUBJECT TO CHANGE WITHOUT NOTICE. WE ARE PLEDGED TO THE LETTER AND SPIRIT OF U.S. POLICY FOR THE ACHIEVEMENT OF EQUAL HOUSING OPPORTUNITY THROUGHOUT THE NATION. WE ENCOURAGE AND SUPPORT AN AFFIRMATIVE ADVERTISING AND MARKETING PROGRAM IN WHICH THERE ARE NO BARRIERS TO OBTAINING HOUSING BECAUSE OF RACE, COLOR, RELIGION, SEX, HANDICAP, FAMILIAL STATUS OR NATIONAL ORIGIN. PLAN DRAW NOT TO SCALE.

2 BEDROOMS/ 2 BATHROOMS

LINE 10/ 12			
RESIDENCE	841 SF	78.13 M ²	
TERRACE	180 SF	16.72 M ²	
TOTAL	1,021 SF	94.85 M ²	

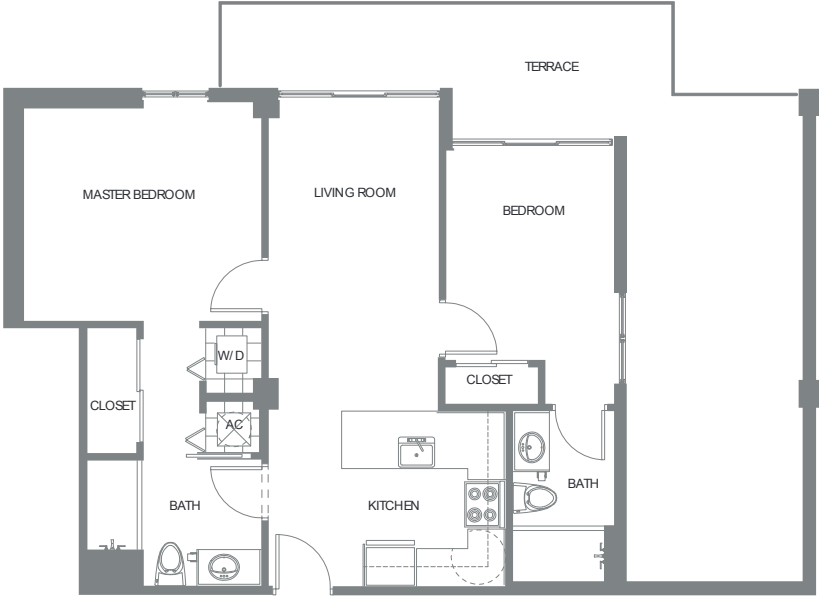
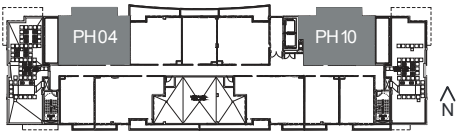


*PLANS, MATERIALS AND SPECIFICATIONS ARE SUBJECT TO ARCHITECTURAL AND OTHER REVISIONS AT THE SOLE DISCRETION OF THE DEVELOPER, BUILDER OR ARCHITECT, OR AS MAY BE REQUESTED BY LAW. FLOOR PLANS SHOWN ARE NOT OPPORTUNITY TO ANY PARTICULAR SCALE. ALL DIMENSIONS ARE MEASURED TO THE EXTERIOR BOUNDARIES OF THE EXTERIOR WALLS, CORRIDOR WALLS AND TO THE CENTERLINE OF INTERIOR PARTITION WALLS AND MAY VARY FROM THE DESCRIPTION AND DEFINITION OF THE UNIT SET FORTH IN THE DECLARATION. ALL DIMENSIONS ARE APPROXIMATE AND ALL FLOOR PLANS AND DEVELOPMENT PLANS ARE SUBJECT TO CHANGE. EQUAL HOUSING OPPORTUNITY: ORAL REPRESENTATIONS CANNOT BE RELIED UPON AS CORRECTLY STATING REPRESENTATIONS OF THE DEVELOPER. FOR CORRECT REPRESENTATIONS, MAKE REFERENCE TO THE DOCUMENTS REQUIRED BY SECTION 718.51, FLORIDA STATUTES, TO BE FURNISHED BY THE DEVELOPER TO A BUYER OR LESSEE. NOT AN OFFER OR SOLICITATION WHERE PROHIBITED BY STATE STATUTES. ALL OTHERS ARE SUBJECT TO THE TERMS AND CONDITIONS OF ANY SALES OR RESERVATION AGREEMENT WITH THE DEVELOPER. AVAILABILITY AND PRICES OF RESIDENCES ARE SUBJECT TO CHANGE WITHOUT NOTICE. WE ARE PLEDGED TO THE LETTER AND SPIRIT OF U.S. POLICY FOR THE ACHIEVEMENT OF EQUAL HOUSING OPPORTUNITY THROUGHOUT THE NATION. WE ENCOURAGE AND SUPPORT AN AFFIRMATIVE ADVERTISING AND MARKETING PROGRAM IN WHICH THERE ARE NO BARRIERS TO OBTAINING HOUSING BECAUSE OF RACE, COLOR, RELIGION, SEX, HANDICAP, FAMILIAL STATUS OR NATIONAL ORIGIN. PLAN DRAWN NOT TO SCALE.

2 BEDROOMS/ 2 BATHROOMS

LINE PH04		
RESIDENCE	815 SF	75.71 M ²
TERRACE	449 SF	41.71 M ²
TOTAL	1,264 SF	117.42 M ²

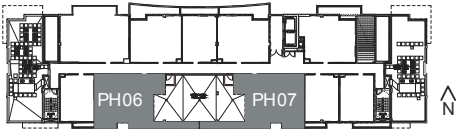
LINE PH10		
RESIDENCE	863 SF	80.17 M ²
TERRACE	449 SF	41.71 M ²
TOTAL	1,312 SF	121.88 M ²



PLANS, MATERIALS AND SPECIFICATIONS ARE SUBJECT TO ARCHITECTURAL AND OTHER REVISIONS AT THE SOLE DISCRETION OF THE DEVELOPER, BUILDER OR ARCHITECT, OR AS MAY BE REQUESTED BY LAW. FLOOR PLANS SHOWN ARE NOT OPPORTUNITY TO ANY PARTICULAR SCALE. ALL DIMENSIONS ARE MEASURED TO THE EXTERIOR BOUNDARIES OF THE EXTERIOR WALLS, CORRIDOR WALLS AND TO THE CENTERLINE OF INTERIOR PARTITIONING WALLS AND MAY VARY FROM THE DESCRIPTION AND DEFINITION OF THE "UNIT" SET FORTH IN THE DECLARATION. ALL DIMENSIONS ARE APPROXIMATE AND ALL FLOOR PLANS AND DEVELOPMENT PLANS ARE SUBJECT TO CHANGE. EQUAL HOUSING OPPORTUNITY: ORAL REPRESENTATIONS CANNOT BE RELIED UPON AS CORRECTLY STATING REPRESENTATIONS OF THE DEVELOPER. FOR CORRECT REPRESENTATIONS, MAKE REFERENCE TO THE DOCUMENTS REQUIRED BY SECTION 781.05 FLORIDA STATUTES, TO BE FURNISHED BY THE DEVELOPER TO A BUYER OR LESSEE, NOT AN OFFER OR SOLICITATION WHERE PROHIBITED BY STATE STATUTES. ALL OFFERS ARE SUBJECT TO THE TERMS AND CONDITIONS OF ANY SALES OR RESERVATION AGREEMENT WITH THE DEVELOPER. AVAILABILITY AND PRICES OF RESIDENCES ARE SUBJECT TO CHANGE WITHOUT NOTICE. WE ARE PLEDGED TO THE LETTER AND SPIRIT OF U.S. POLICY FOR THE ACHIEVEMENT OF EQUAL HOUSING OPPORTUNITY THROUGHOUT THE NATION. WE ENCOURAGE AND SUPPORT AN AFFIRMATIVE ADVERTISING AND MARKETING PROGRAM IN WHICH THERE ARE NO BARRIERS TO OBTAINING HOUSING BECAUSE OF RACE, COLOR, RELIGION, SEX, HANDICAP, FAMILIAL STATUS OR NATIONAL ORIGIN. PLAN DRAWN NOT TO SCALE.

2 BEDROOMS/ 2 BATHROOMS

LINE PH6/ PH7			
RESIDENCE	998 SF	92.71 M ²	
TERRACE	183 SF	17.00 M ²	
TOTAL	1,181 SF	109.71 M ²	



*PLANS, MATERIALS AND SPECIFICATIONS ARE SUBJECT TO ARCHITECTURAL AND OTHER REVISIONS AT THE SOLE DISCRETION OF THE DEVELOPER, BUILDER OR ARCHITECT, OR AS MAY BE REQUESTED BY LAW. FLOOR PLANS SHOWN ARE NOT OPPORTUNITY TO ANY PARTICULAR SCALE. ALL DIMENSIONS ARE MEASURED TO THE EXTERIOR BOUNDARIES OF THE EXTERIOR WALLS, CORRIDOR WALLS AND TO THE CENTERLINE OF INTERIOR PARTITIONING WALLS AND MAY VARY FROM THE DESCRIPTION AND DEFINITION OF THE "UNIT" SET FORTH IN THE DECLARATION. ALL DIMENSIONS ARE APPROXIMATE AND ALL FLOOR PLANS AND DEVELOPMENT PLANS ARE SUBJECT TO CHANGE. EQUAL HOUSING OPPORTUNITY: ORAL REPRESENTATIONS CANNOT BE RELIED UPON AS CORRECTLY STATING REPRESENTATIONS OF THE DEVELOPER. FOR CORRECT REPRESENTATIONS MAKE REFERENCE TO THE DOCUMENTS REQUIRED BY SECTION 718.05 FLORIDA STATUTES. TO BE FORWARDED BY THE DEVELOPER TO A BUYER OR LESSEE, NOT AN OFFER OR SOLICITATION WHERE PROHIBITED BY STATE STATUTES. ALL OTHERS ARE SUBJECT TO THE TERMS AND CONDITIONS OF ANY SALES OR RESERVATION AGREEMENT WITH THE DEVELOPER. AVAILABILITY AND PRICES OF RESIDENCES ARE SUBJECT TO CHANGE WITHOUT NOTICE. WE ARE PLEDGED TO THE LETTER AND SPIRIT OF U.S. POLICY FOR THE ACHIEVEMENT OF EQUAL HOUSING OPPORTUNITY THROUGHOUT THE NATION. WE ENCOURAGE AND SUPPORT AN AFFIRMATIVE ADVERTISING AND MARKETING PROGRAM IN WHICH THERE ARE NO BARRIERS TO OBTAINING HOUSING BECAUSE OF RACE, COLOR, RELIGION, SEX, HANDICAP, FAMILIAL STATUS OR NATIONAL ORIGIN. PLAN DRAWN NOT TO SCALE.

26EDGEWATER

321 NE 26 STREET | MIAMI, FL 33137



ORAL REPRESENTATIONS CANNOT BE RELIED UPON AS CORRECTLY STATING THE REPRESENTATIONS OF THE DEVELOPER. FOR CORRECT REPRESENTATIONS, REFERENCE SHOULD BE MADE TO THE DOCUMENTS REQUIRED BY SECTION 718.503, FLORIDA STATUTES, TO BE FURNISHED BY A DEVELOPER TO A BUYER OR LESSEE. THIS OFFERING IS MADE ONLY BY THE PROSPECTUS FOR THE CONDOMINIUM AND NO STATEMENT SHOULD BE RELIED UPON IF NOT MADE IN THE PROSPECTUS. THIS IS NOT AN OFFER TO SELL, OR SOLICITATION OF OFFERS TO BUY, THE CONDOMINIUM UNITS IN STATES WHERE SUCH OFFER OR SOLICITATION CANNOT BE MADE. PRICES, PLANS AND SPECIFICATIONS ARE SUBJECT TO CHANGE WITHOUT NOTICE.

THE SKETCHES, RENDERINGS, GRAPHIC MATERIALS, PLANS, SPECIFICATIONS, TERMS, CONDITIONS AND STATEMENTS CONTAINED IN THIS BROCHURE ARE PROPOSED ONLY, AND THE DEVELOPER RESERVES THE RIGHT TO MODIFY, REVISE OR WITHDRAW ANY OR ALL OF SAME IN ITS SOLE DISCRETION AND WITHOUT PRIOR NOTICE. THE PHOTOGRAPHS CONTAINED IN THIS WEB SITE HAVE BEEN TAKEN OFF-SITE AND ARE MERELY INTENDED AS ILLUSTRATIONS OF THE ACTIVITIES AND CONCEPTS DEPICTED THEREIN. NOTHING HEREIN SHALL CONSTITUTE AN OFFER TO SELL, OR A SOLICITATION OF OFFERS TO BUY, IN STATES IN WHICH SUCH OFFERS OR SOLICITATIONS CANNOT BE MADE.