

Sacramento River Delta Historical Society

NEWSLETTER

“For what is the present, after all, but a growth out of the past.” – Walt Whitman

NEWSLETTER

VOLUME 37, NUMBER 2

DECEMBER 2017

President's Notes

Another successful and interesting year is drawing to a close. I wish it would rain!

As the New Year approaches I have been reflecting about the horrible disasters that have struck our country and our great state in the last six months. The loss of so much personal history, for so many families, is hard to fathom. In my home town of Napa, many friends lost everything. Pictures of kids, family history, paintings, generations of objects and mementos. For three days we thought my sister's house had burned, many paintings that my father had done, early California photographs and furniture from my grandparents. We were devastated by that prospect. She was fortunate. The fire passed her by, scorching her landscape, roof, and spring water source. There was even some loss of life among our family circle of friends. I am in Santa Barbara right now, seeing the same devastation on a slightly less personal level. Keep those that are suffering from their losses in your hearts!

Tom Herzog (Program Coordinator) continues to schedule fabulous presentations for our general meetings. Tom is going through some tough times right now and we all need to keep him in our prayers. We have an interesting speaker scheduled for our January general meeting and potluck, and in either March or May we will be screening a documentary called *The Ito Sisters: An American Story*. The film is set largely in the town of Courtland. The screening will be narrated by Antonia Glenn, director and producer of this award winning film. The film tells

the story of her grandmother and sisters and the early Japanese American experience in California. Do not miss this meeting!

The biggest initiative SRDHS completed this year involved the republishing of the *Pear Cookbook*, originally compiled by Barbara Dahlberg. Maryellen and Tom worked diligently on the editing, illustration, and publication of the book. We introduced it at the Pear Fair in July and should have more printed by our January meeting!

The one thing you will notice when you attend the next general meeting is that the floors of the entire Jean Harvie Center have been refinished. The massive job was funded by the Walnut Grove Rotary, Don Nottali, the Towne family and a number of other donors. The difference, in the formerly dark halls, is especially noticeable.

In closing, I encourage all members to attend our January potluck/general meeting. Bring friends and neighbors who might want to learn about your historical society. Take advantage of our NEW membership rate (\$10) for youth/students and promote our local history by purchasing one or more for young people that you know. If you are inclined to put in a hard, but fun day, volunteer to assist board members at the Pear Fair. It is very rewarding to answer questions for visitors to our wonderful area. Please call me or email if you are interested.

John Stutz, President

530-219-4420

Istutz@ix.netcom.com

Sacramento River Delta Historical Society

JANUARY GENERAL MEETING & ANNUAL POTLUCK

Tuesday, January 16, 2018 at 6:00 pm

Jean Harvie community Center 14273 River Road, Walnut Grove

Please bring food for 10: A—N Hot Dish O—S Salad T—Z Dessert

Please call John Stutz 530-219-4420 if you have any questions

DELTA FILLING, SERVICE, GAS STATIONS

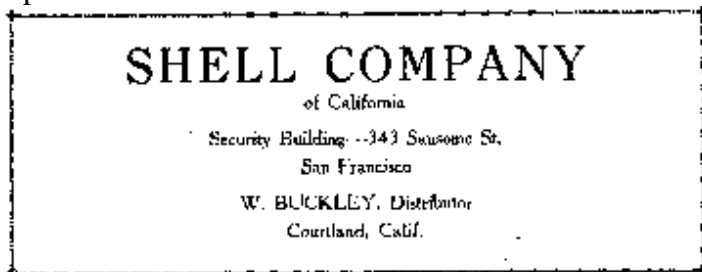
What Do You Remember?

By Kathleen Graham Hutchinson

I remember for instance Delta Filling/Service/Gas stations between Freeport and Isleton including Franklin Boulevard and the Walnut Grove-Thornton road.*

*The state highway wasn't paved beyond the Clarksburg ferry slip until the late 1920s. To travel to Sacramento one drove over the Hood Franklin Road to Franklin or the Walnut Grove-Thornton Road to Thornton where one drove north to Sacramento on the Sacramento – Stockton road or south to Stockton on the Lower Stockton Road. Both roads are now termed Franklin Boulevard.

All the big West Coast petroleum companies were represented by the Service/Gas/ Stations among them: Standard Oil of California, Union Oil of California, Mobil (Pegasus was its sign), Texaco, Associated (the sign of the "Flying A"), Tidewater, Richfield, Shell and Gilmore. I don't recall Signal or Mohawk being represented.



So here we go on a ride. These are my childhood memories, some likely flawed. All these stations were serviced by tugs pulling petroleum lighters (we Deltans called them barges) and then by tank trucks. All the major towns had petroleum wharves. There was Union Oil in Clarksburg, Shell Oil in Courtland, Union and Shell in Walnut Grove, Standard of California (served Standard and Chevron**) in Locke opposite the SP Railroad water tank tower, and Texaco opposite Butchi Brothers Garage at First Avenue in Walnut Grove. The Union wharf in Walnut Grove was opposite A Street. The tanks were later converted to ag chemicals.

***Standard Oil of California owned outright and operated stations under the "Standard" name and painted red, white and blue. "Chevron" stations were privately owned and operated but used Standard Oil of California products exclusively, and these stations were painted maroon, bright moss green and cream.

Years later corporations shortened their business names and named themselves after their most well-known product. Standard of Cal took its shield logo as its corporate name. The Chevron dealers were bought out and everything was labeled "Chevron" and painted red, white and blue.

Beginning at Freeport there was a Standard or Chevron Station has been converted to Oto's Automotive Garage.

Union was at Clarksburg. Were there others?? Out in the Holland Tract (New Netherlands) there was a station at "Amistad Junction" and Jefferson Boulevard and the Netherlands road and at the intersection of Jefferson Boulevard and the North Courtland Road.

Across the river at Hood there was a station at the T intersection. Years later the building housed a Chinese café.

At Franklin and the Sacramento-Stockton Road there was a station on the west side midway between King's skating Rink and the old grammar school.

There were at least three in Courtland: Kirtland's (Mobil) on the outside of the levee at Chinatown, Farmer's Shell Service at the inside of the levee above Fosters (Fisher's) Wharf and Café, and a Chevron Station at Morgan's Landing and Café at the south of town on the outside of the levee above what was once known as "Hoyt Ville". The Morgan's lived in an apartment underneath the café.

A mile downstream at Paintersville was Vieira's Garage and also Buckley's Trucking which had fleet service.

On Sutter Island, another mile downstream at the head of the Steamboat Slough was Steamboat Landing where on the inside of the levee there was a convenience store, café and in front two gas pumps with glass tops. The building was cantilevered over the river and burned to the ground in the late 1940's. The store and café were removed to the outside of the levee to what has been the Arlin residence. (Lucy Arlin's father was the local Constable and water well expert and lived in Courtland.) Only the gas pumps remain today. After several partial remodels it was wholly remodeled in 2017.



This is an aerial view of Axels Landing and the entrance to Steamboat Slough. Note the sandbar to the left of the bridge, which provided a constant hazard to navigation and a lovely sunbathing beach.

The original store and café can be seen cantilevered over the levee.

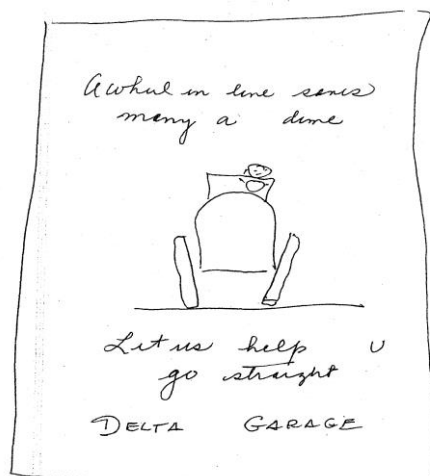
Across the river at Vorden were there filling pumps at Simoni's or at the River Rat Café??

On the Twin Cities Road near the River Road was Laney Station where Vic Laney had his trucking business. I'm sure he had fleet services.

At Locke, Jack Ross operated a service station and garage at the north end of town. It was located on the outside of the levee and between the hotel. There were also some pumps on Main Street, one in front of Yuen Cheong's market and the other further down the street on the opposite side.

There were many stations in Walnut Grove on each bank. First, The East Bank: Victor Ow ran the Union Station on the inside of the levee at A Street. There were 2 pumps with glass tops in front of the Hindu store, diagonal to Tyler and Bridge Streets. The Shell station at the east anchor of the bridge was operated by the Waterworth brothers. It later became a Chevron (Standard of Cal) run for many years by Victor Ow. Below this station was McCall Trucking (later Wilson-McCall) who had fleet service.

A sketch from memory by Wm. N. Hutchinson, Jr. It reads, "A wheel in time saves many a dime."



Near the Georgianna Slough Bridge was Al Kammayers Garage and adjacent café. The garage burned to the ground in a spectacular fire with Myron Brown's Cadillac on the rack. I'm sure there were more stations, etc. which came and went.

The West Bank: At the West anchor of the bridge was Cunha Brothers Mobil station. Did Jack Veteran's Garage (now the Boat Works) have facilities? Or the Texaco dock at 1st Avenue? At the head of Second Avenue was a Gilmore station. "Roar with Gilmore". It later was Koomorian's Cleaners and then Wall's Cleaners. It is now a residence. There was a modern Shell station operated first by the Crane Brothers and then the Ow's next to the Bridgetender Mall (formally the Ford Dealership). Opposite the Central Market on the inside of the levee at water level was Furtado's Chevron— was this an old style Chevron Service Station prior to the 1940's? (The Grove Inn cantilevered over the river at this site included a popular soda fountain.)

Out at Four Corners on the Walnut Grove-Thornton Road, "Snick" Manus operated a station and café. He also drove trucks.

Carli's old store was on the Howard Landing Road a little downhill from the ferry slip. Did Carli's sell gas from a pump??

At Ryde on the inside of the levee was an (old) Chevron station (Furtados?). It was cantilevered over the river, opposite the Hotel. One foggy winter day a tugboat pulling a petroleum barge took it out. (Furtado Richfield station was on the outside of the levee on the big corner downriver from town near the cannery. Also, were there pumps at the cannery at Tunnel Park on the Riverside?? There was a big beefwood Australian pine tree, I remember.

Upriver of Isleton at Delta Acres on the outside of the levee, Associated had a station which was converted to a residence in the 1970's - a new building enclosed the station as it was.

In Isleton there was a station at the gore which was converted years ago into the Levee Café (which has sadly closed). I think there was a Shell station near the

Gardiner Improvement Company about where Ramos oil has a fleet station.

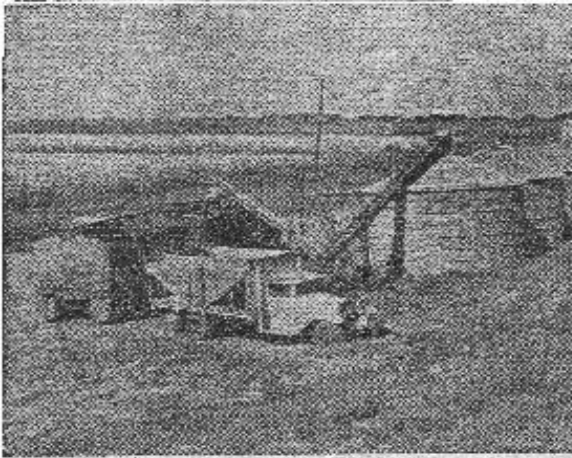
There were also wharfs in Isleton and Rio Vista. The Isleton wharf was opposite the Gardiner Improvement Company.

I didn't get across the river to Rio Vista much at all, so you Rio Vistans must fill me in. Let us know.

This is what I remember. What do you? Send us any corrections or additions.

And, native and long-term Deltans: Have you signed up for an oral history interview? I have!

THE SACRAMENTO BEE, SATURDAY, OCTOBER 5, 1935



MECHANICAL HARVEST—Mechanization is the keynote of corn production in the delta. In this photo, shelled corn which has been stored temporarily in the bins is shown being loaded in bulk for shipment by truck to market from the Russell Graham Ranch on Tyler Island.

Tyler Island Is Delta Corn Belt

By Dorothy Aspinwall
McClintock, Sacramento Bee

WALNUT GROVE—The bright green foliage of corn sweeping across 4,000 acres of rich peat land gives Tyler Island the appearance of a vast, restless ocean throughout the summer, its coming into a beautiful harvest.

The green has turned to gold and the full corn, ripe and ready for the combine, gave promise of a monetary return as well. The crop is expected to make 2½ to three tons per acre of shelled corn on the island. Shelled corn is worth about \$65 per ton this season.

Tyler Island will may be called the corn belt of the delta. Good soil, wise planning and careful farming have produced a high quality product which has a ready market.

Large Growers
George F. Wilson, Russell Graham and George Jensen, all of Walnut Grove, some of the farmers with large Tyler Island corn plantings, rotate the crop with barley on alternate years for best results.

The soil is fumigated before planting, to control wire worms. Planting is done in April with eight row machines. It is necessary to apply super phosphate fertilizer, which is added with the seed on peat land. This procedure does not apply on other types of land, which usually require a heavy dose of nitrate.

When corn is 18 inches high, and after two cuttings, 2,4-D is used with ground spray rigs to kill broad leaved weeds.

1955 Flood Snodgrass Slough

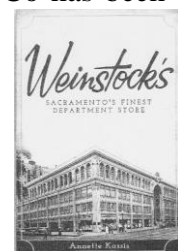
150 to 300 people filling 2000 to 2500 dairy feed bags with sand provided by Herzog, and the Jonson's hydraulic bulldozer saved the levee.

Reminiscence by Helen Herzog Pausback

Lawrence "Brick" Schneider whose family's nursery planted the black walnut trees along Jefferson Blvd in Yolo County died June 16, 2017 at age of 105. He was the uncle of Bob and Barry McClain of Courtland.

Books on history which pertain to the Delta and can be found through library interloan:

1. "Changing Dreams and Treasured Memories: A Story of Japanese-Americans in the Sacramento Region" by Wayne Meada
2. "Canton Footprints: Sacramento's Chinese Legacy" by Philip Choy
3. "Index to the List of Baptisms, Marriages, Deaths and Confirmations in the Districts of Folsom, Live Oak, Elk Grove, Galt, Courtland and Walnut Grove: January 1, 1883 to April 6, 1913"
4. "Henry Ford and Grassroots America and Steam Power on the American Farm: A Chapter in Agricultural History 1850 – 1920" by Reynold M. Wik
5. A new book chronicling the history of Sacramento's premier department store, Weinstock, Lubin, and Co has been written by Annette Kassiss.



WELCOME NEW MEMBERS

Michael Collins from Palo Alto
John S. Noe, DDS from Walnut Grove

NEW REVISED "PEAR COOKBOOK"

The Sacramento River Delta Historical Society and the Pear Fair Committee have reproduced the revised Barbara Dahlberg cookbook produced in the 1960s containing Pear Recipes from many local residents and organizations of the Delta. It is now for sale from SRDHS. See last page of the newsletter for order form.

RESOURCE CENTER NEWS

Thank you for your historical donations to our resource center! We are recording each item in our data base – many collections are done, but many still need to be entered. **Would you like to help?** We work almost every Tuesday from 10:00 a.m. to 1:00 p.m. and need people to enter data (it's already handwritten and just needs to be entered into the computer.) Please call Esther at 777-2227 or email srdhs@ gmail.com to make sure she will be there and join the fun.

INFORMATION

Sacramento River Delta Historical Society web site is srdhs.org. Please view and enjoy the information. If you wish to email the resource center, the email address is srdhs@ gmail.com.

SRDHS 2018 SCHEDULE

January 16.....	General Meeting/Annual Potluck
February 20.....	Board Meeting
March 20.....	General Meeting
April 17.....	Board Meeting
May 15.....	General Meeting
June 19.....	Board Meeting
	June Newsletter
July/August.....	Summer Break
September 18.....	General Meeting
October 16.....	Board Meeting
November 20.....	General Meeting
December.....	Board Meeting
	December Newsletter

CONTENTS

President's Notes.....	1
January Potluck Notice.....	1
"What do you Remember"	2-4
Interesting tidbits.....	4
Resource Center News & Notices....	5
SRDHS Schedule.....	5
Membership Form.....	5
2018 Calendar preview and order form.....	6
Pear Cookbook order form.....	7

**DO YOU WANT TO CONTINUE TO RECEIVE THIS
GREAT PUBLICATION???**

*Then make sure you pay your 2017 dues –
Use this form or one of our handy dues envelopes*

Name: _____
Address: _____
City, State, Zip: _____
Phone: _____
E-Mail: _____

- ☐ I'm paying Annual dues for the following year(s):
☐ 2018 ☐ 2019 ☐ Other _____
 \$25.00 a year for Annual Membership
☐ I've enclosed \$150 to become a Lifetime Member
☐ I'd like to register as an Honorary Member – Free to
 those members 80 years and older

Please mail this form with a check payable to SRDHS to:

SRDHS Membership
P.O. Box 293
Walnut Grove, CA 95690

MEMORIAL CONTRIBUTIONS

We would like to thank all those who made memorial contributions to the Sacramento River Delta Historical Society.

NEWSLETTER STAFF

Editor.....Kathleen Hutchinson
Design/Layout.....Esther Koopman

*The Sacramento River Delta Historical Society publishes the Sacramento River Delta Society Newsletter twice a year.

NEW “2018” SACRAMENTO RIVER DELTA HISTORICAL SOCIETY PEAR LABEL CALENDAR AVAILABLE

Here is the cover of the delightful 2018 Calendar representing more Pear Labels from Jim Dahlberg's Collection. Each month shows a different Pear Label that has not been published before from his wonderful collection.



The Sacramento River Delta Historical Society's "Pear Label" Calendar for 2018 at the Resource Center and at the Society Meetings. You may also purchase the calendar by filling out the form below and mailing it with your check to:

SRDHS
P O Box 293
Walnut Grove, CA 95695

The price for each 2018 calendar is \$15.00 plus postage
2012, 2013, 2014, 2015, 2016, 2017 calendar price is \$10 each plus postage

If you wish to have the calendar(s) mailed **please** add the following postage:

1 Calendar \$2.25 postage

2 Calendars \$3.50 postage

3 - 6 calendars \$6.65 for priority mail (2 to 3 day delivery)

Sacramento River Delta Historical Society **Calendar** Order Form

Please send _____ 2018 calendars @ \$15 per calendar

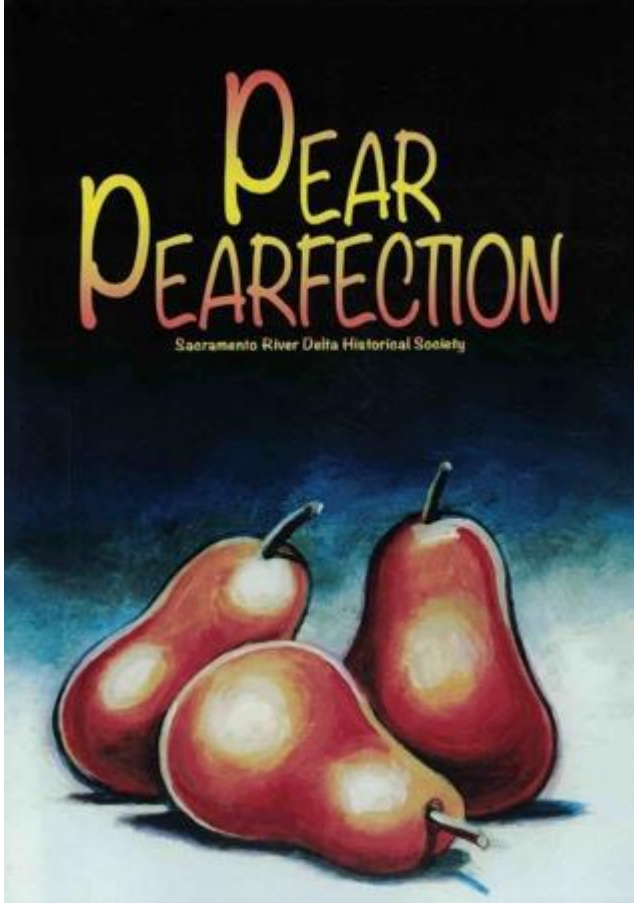
__2012 __2013 __2014 __2015 __2016 __2017 calendars @ \$10 per calendar

Enclosed is payment in the amount of \$_____ (include postage in total)

Name _____

Address _____

City _____ State _____ Zip _____



PEAR PEARFECTION cookbook full of delightfully tasteful recipes using pears which our Delta is known for producing.

You may purchase the cookbook at the Sacramento River Delta Historical Society Resources Center or at the Society Meetings or at the Courtland Pear Fair held the last Sunday in July. You may also order the cookbook(s) by filling out the form below and mailing it with your check to:

SRDHS
P O Box 293
Walnut Grove, CA 95690

The price for each cookbook is \$15 plus postage if mailed.

If you wish to have the cookbook(s) mailed please add the following postage:

1 – 2 Cookbooks \$3.20 postage

3 - 6 Cookbooks \$6.65 for priority mail (2 to 3 day delivery)

Sacramento River Delta Historical Society Cookbook Order Form

Please send _____ Pear Pearfection Cookbook(s) @ \$15 each

Enclosed is payment in the amount of \$_____ (include postage in total)

Name_____

Address_____

City_____ State_____ Zip_____