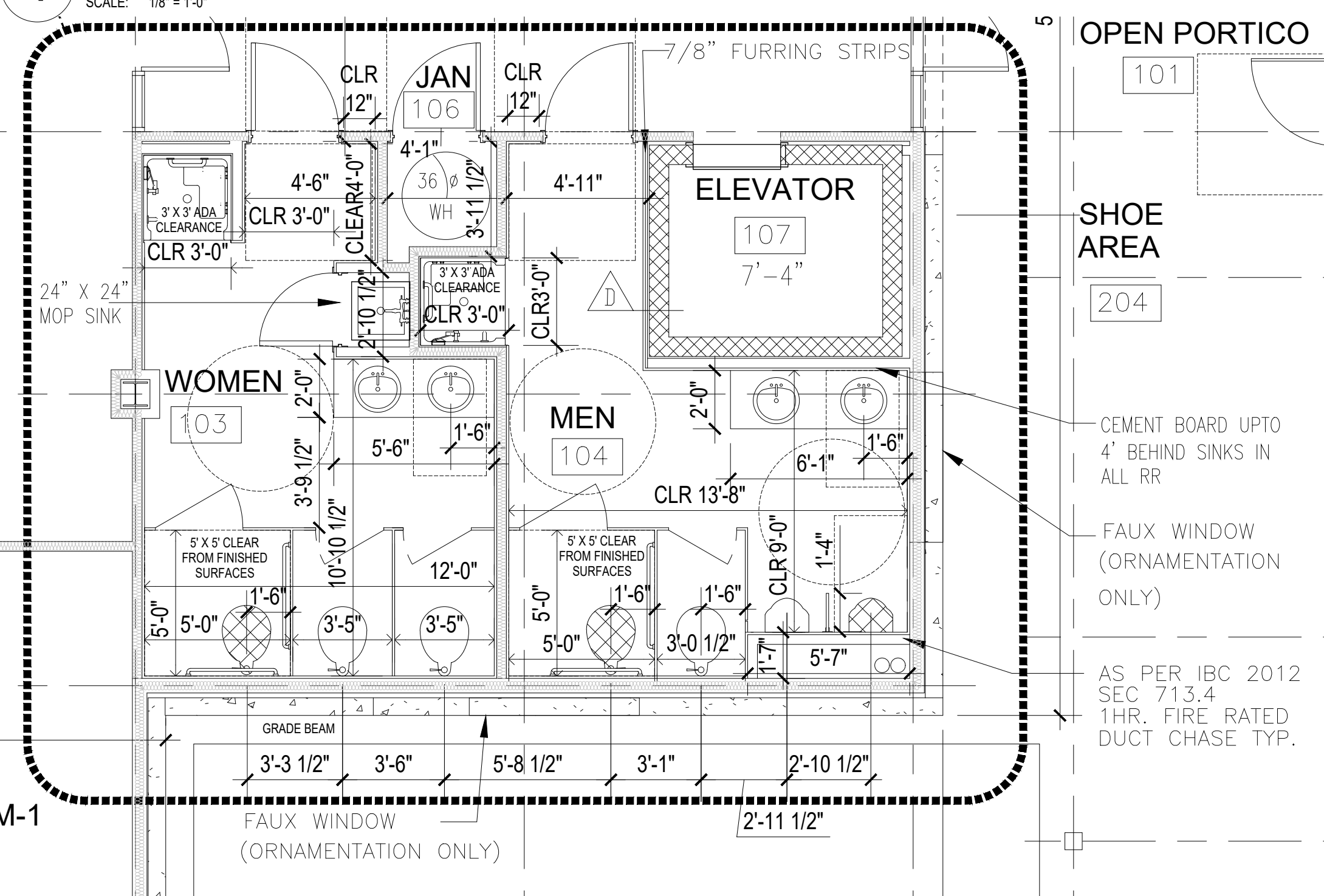
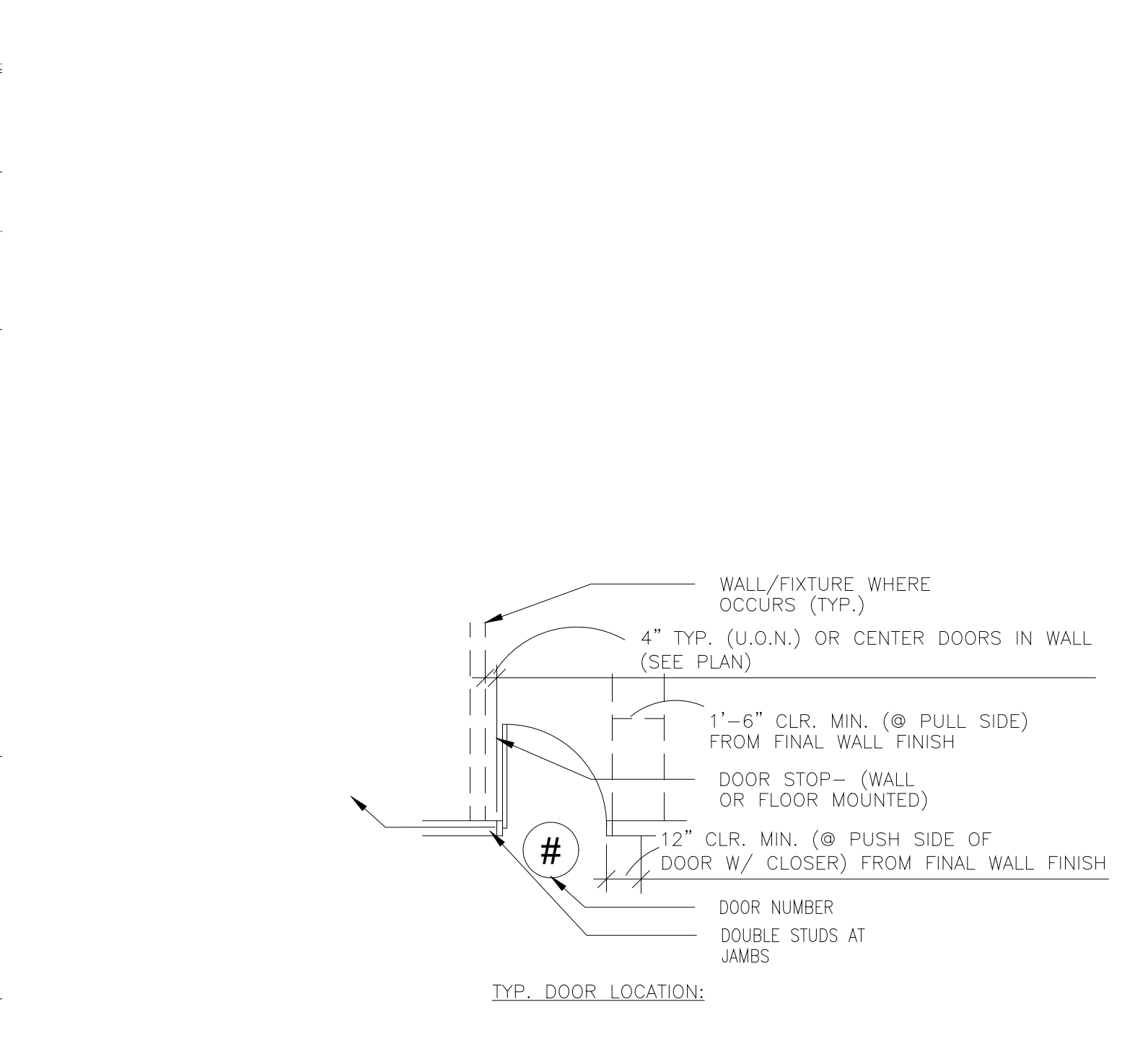


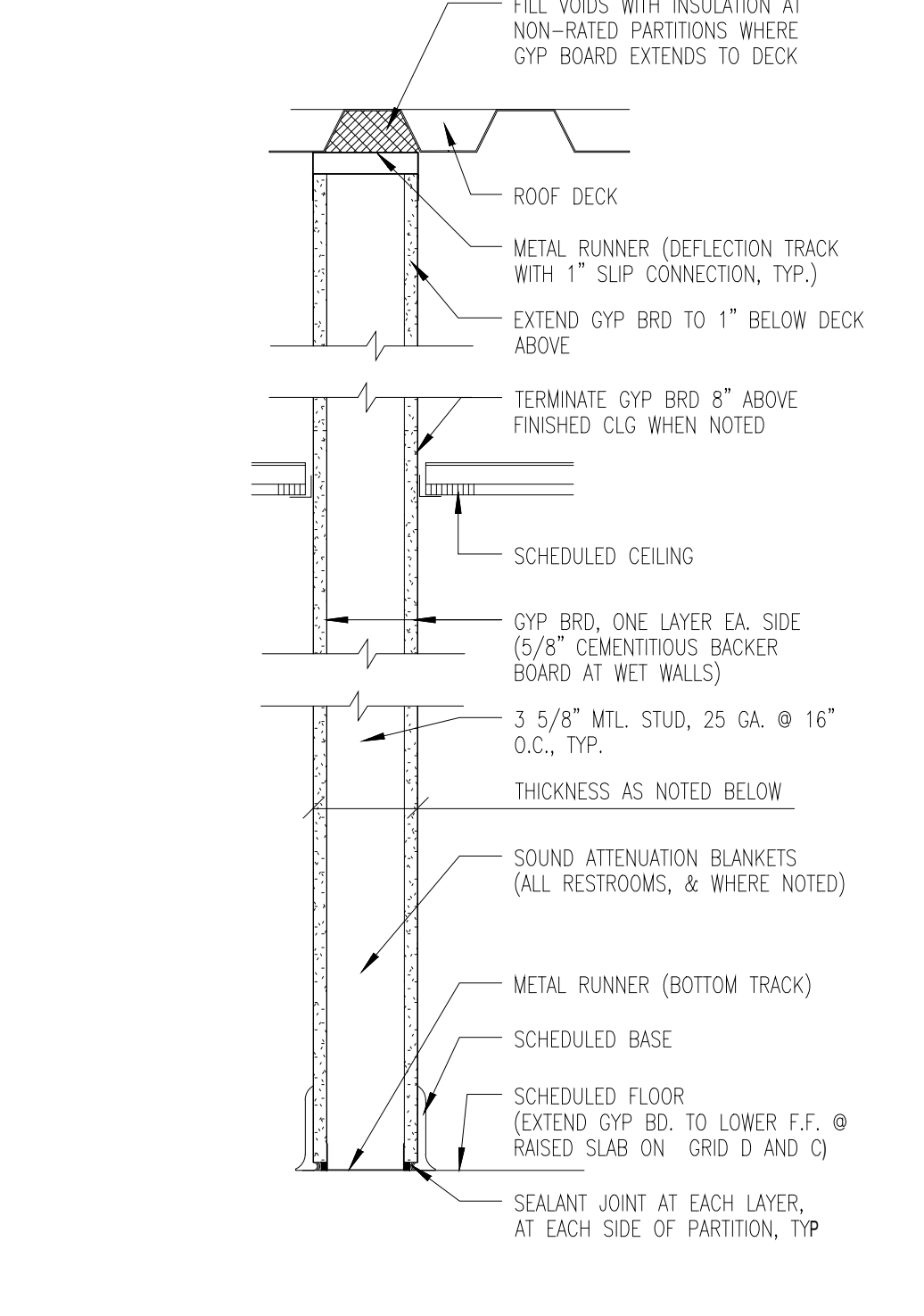
**1 FIRST FLOOR PLAN (INTERIOR PARTITION DIMENSIONS CLARIFICATIONS)**  
SCALE: 1/8" = 1'-0"



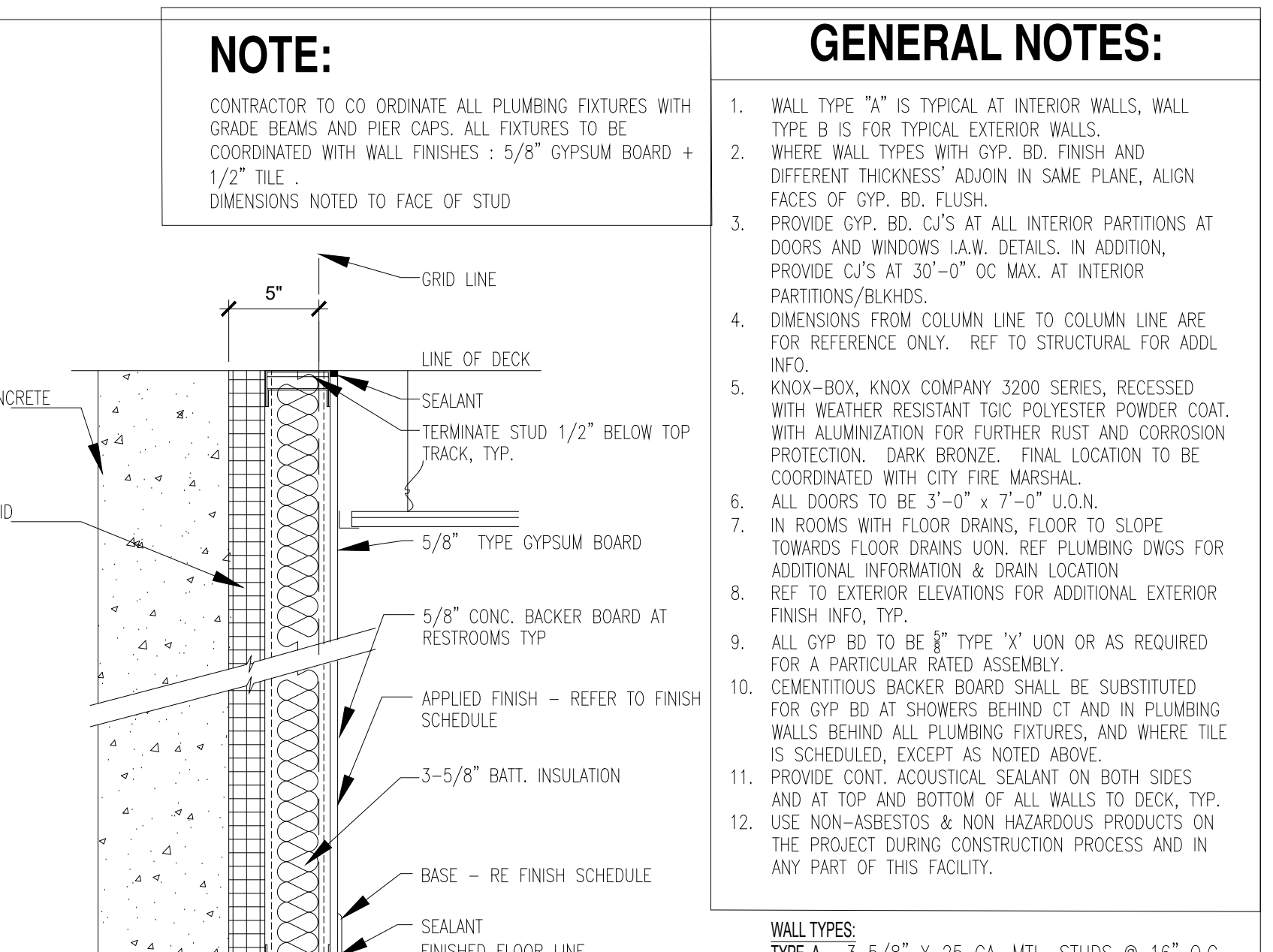
**2 ENLARGED RESTROOM L PLAN**  
SCALE: 1/4" = 1'-0" PLEASE FIELD VERIFY ALL THE DIMENSIONS



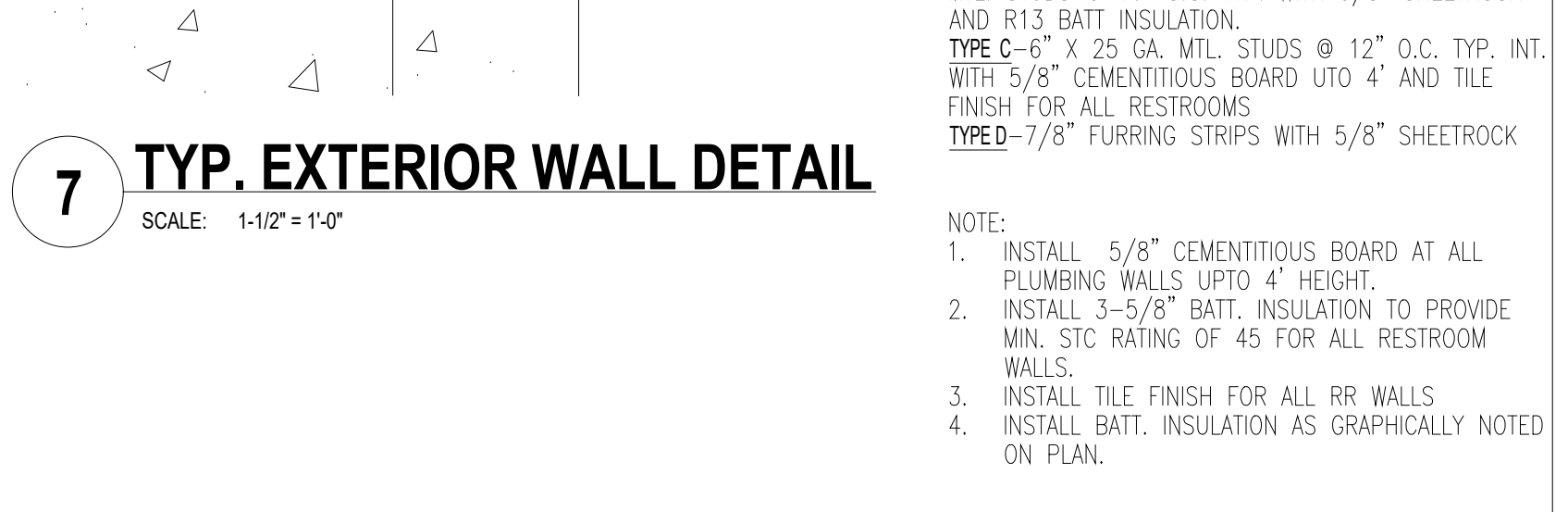
**3 STANDARD DOOR DETAIL**  
SCALE: 1/4" = 1'-0"



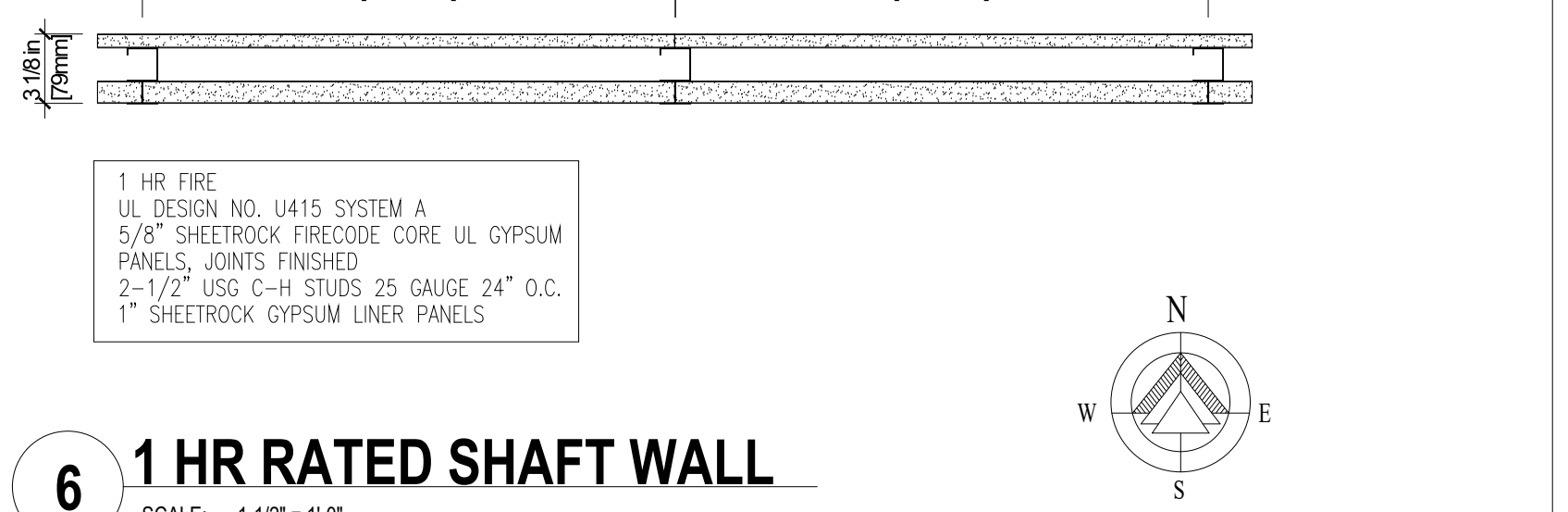
**4 TYP. WALL TO DECK DETAIL**  
SCALE: 1/2" = 1'-0"



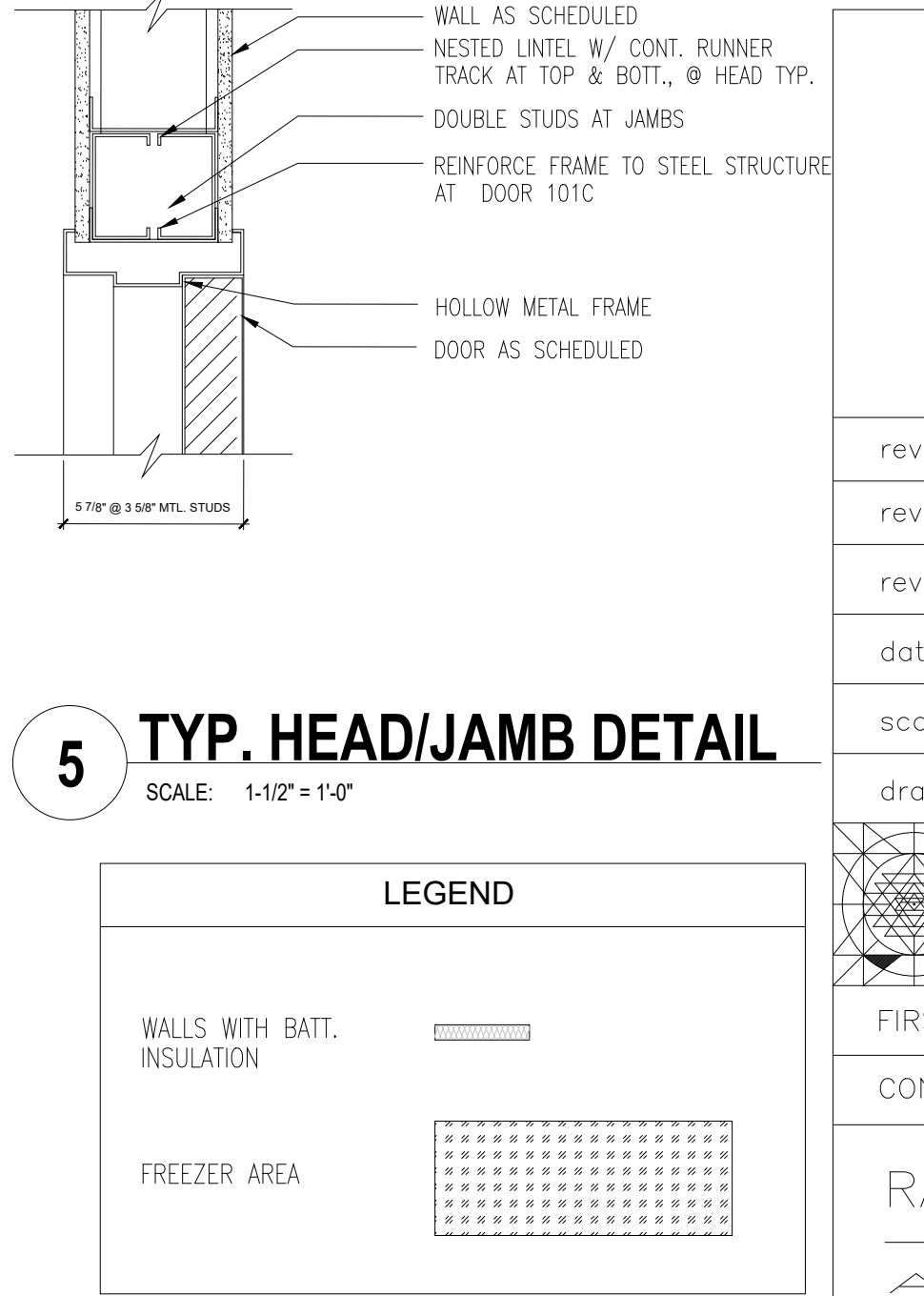
**7 TYP. EXTERIOR WALL DETAIL**  
SCALE: 1-1/2" = 1'-0"



**6 1 HR RATED SHAFT WALL**  
SCALE: 1-1/2" = 1'-0"



**5 TYP. HEAD/JAMB DETAIL**  
SCALE: 1-1/2" = 1'-0"



**GENERAL NOTES:**

- WALL TYPE "A" IS TYPICAL AT INTERIOR WALLS, WALL TYPE B IS FOR TYPICAL EXTERIOR WALLS.
- WHERE WALL TYPES WITH GYP. BD. FINISH AND DIFFERENT THICKNESS' ADJOIN IN SAME PLANE, ALIGN FACES OF GYP. BD. FLUSH.
- PROVIDE GYP. BD. C.J.'S AT ALL INTERIOR PARTITIONS AT DOORS AND WINDOWS I.A.W. DETAILS. IN ADDITION, PARTITIONS/BLKHS.
- DIMENSIONS FROM COLUMN LINE TO COLUMN LINE ARE FOR REFERENCE ONLY. REF TO STRUCTURAL FOR ADDL INFO.
- KNOX-BOX, KNOX COMPANY 3200 SERIES, RECESSED WITH WEATHER RESISTANT TOIC POLYESTER POWDER COAT. WITH ALUMINIZATION FOR FURTHER RUST AND CORROSION PROTECTION. DARK BRONZE. FINAL LOCATION TO BE COORDINATED WITH CITY FIRE MARSHAL.
- ALL DOORS TO BE 3'-0" x 7'-0" U.O.N.
- IN ROOMS WITH FLOOR DRAINS, FLOOR TO SLOPE TOWARDS FLOOR DRAINS UON. REF PLUMBING DWGS FOR ADDITIONAL INFORMATION & DRAIN LOCATION.
- REF TO EXTERIOR ELEVATIONS FOR ADDITIONAL EXTERIOR FINISH INFO, TYP.
- ALL GYP BD TO BE 5/8" TYPE "X" UON OR AS REQUIRED FOR A PARTICULAR RATED ASSEMBLY.
- CEMENTITIOUS BACKER BOARD SHALL BE SUBSTITUTED FOR GYP BD AT SHOWERS BEHIND CT AND IN PLUMBING WALLS BEHIND ALL PLUMBING FIXTURES, AND WHERE TILE IS SCHEDULED, EXCEPT AS NOTED ABOVE.
- PROVIDE CONT. ACOUSTICAL SEALANT ON BOTH SIDES AND AT TOP AND BOTTOM OF ALL WALLS TO DECK, TYP.
- USE NON-ASBESTOS & NON HAZARDOUS PRODUCTS ON THE PROJECT DURING CONSTRUCTION PROCESS AND IN ANY PART OF THIS FACILITY.

**WALL TYPES:**  
**TYPE A** - 3 5/8" x 25 GA. MTL. STUDS @ 16" O.C. TYP. INT. WITH 5/8" SHEETROCK ON EACH SIDE.  
**TYPE B** - TILT UP CONCRETE PANEL WALL WITH R 7.6 RIGID INSULATION ON INSIDE FACE; 3 5/8" x 25 GA. MTL. STUDS @ 16" O.C. TYP. WITH 5/8" SHEETROCK AND R13 BATT INSULATION.  
**TYPE C** - 6" x 25 GA. MTL. STUDS @ 12" O.C. TYP. INT. WITH 5/8" CEMENTITIOUS BOARD TO 4" AND TILE FINISH FOR ALL RESTROOMS  
**TYPE D** - 7/8" FURRING STRIPS WITH 5/8" SHEETROCK

**NOTE:**

- INSTALL 5/8" CEMENTITIOUS BOARD AT ALL PLUMBING WALLS UP TO 4' HEIGHT.
- INSTALL 3-5/8" BATT. INSULATION TO PROVIDE MIN. STC RATING OF 45 FOR ALL RESTROOM WALLS.
- INSTALL TILE FINISH FOR ALL RR WALLS
- INSTALL BATT. INSULATION AS GRAPHICALLY NOTED ON PLAN.

**REGISTERED ARCHITECT**  
**SHASHI D. PATEL AIA NCARB**  
 ARCHITECTS AND PLANNERS  
 442 EAST END AVE. STE-B. PITTSBURGH PA 15221

**FIRST FLOOR PLAN**

CONSTRUCTION DOCUMENT PHASE

**RADHA KRISHNA TEMPLE**  
**ALLEN TEXAS**

rev 02-23-2017  
 rev 01-18-2017  
 date 10-05-2015 released for const.  
 scale AS NOTED  
 drawn by CADD-NV

dwg. 07162013  
 no. A-1-o