

# half steps and flats: quiz and answer sheet

QUIZ: Fill in the blanks and check your answers.

On the keyboard a half step is the note adjacent to it regardless \_\_\_\_\_.

We may \_\_\_\_\_ a note by a half step by using a  $\flat$  (flat) sign.

memory tip: When we go to the left on the keyboard the sound is \_\_\_\_\_.

Think of lowering the pitch or \_\_\_\_\_.

A half step with the same letter name is called a \_\_\_\_\_. Example: C to \_\_\_\_\_.

A half step with a different letter name is called a \_\_\_\_\_. Example: C to \_\_\_\_\_.

## ANSWERS TO EXERCISES

1. 7 chromatic half steps:

C  $\flat$ ; B  $\flat$ ; A  $\flat$ ; G  $\flat$ ; F  $\flat$ ; E  $\flat$ ; D  $\flat$ .

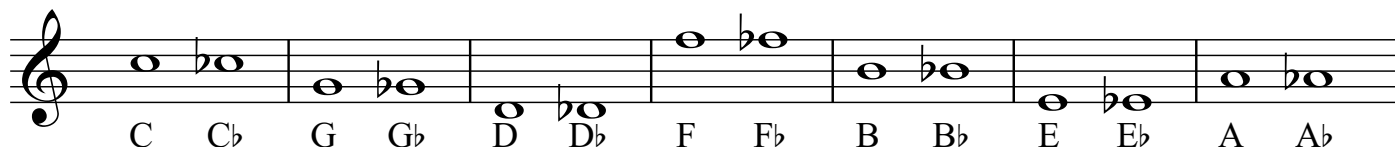
9 diatonic half steps:

C  $\flat$ ; D  $\flat$ ; E  $\flat$ ; F  $\flat$ ; E F; F G  $\flat$ ;

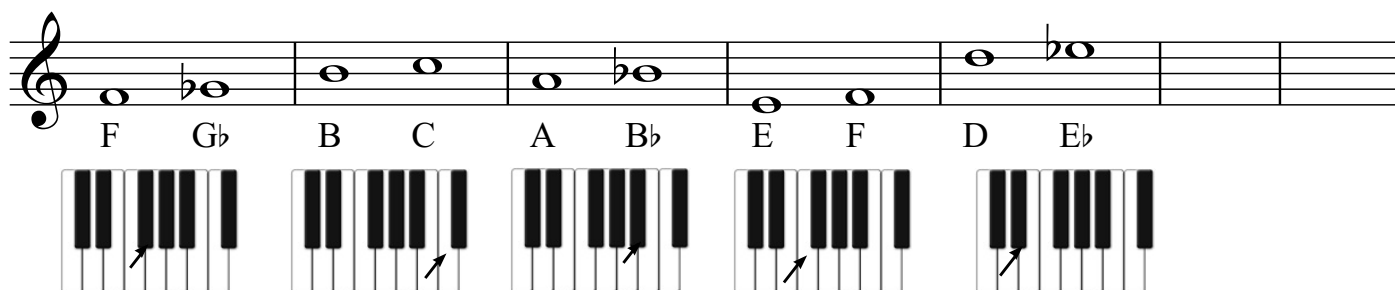
G A  $\flat$ ; A B  $\flat$ ; B  $\flat$  C; B C.



2.



3.



4.

