

**KEYNOTES:**

NOTE: ONLY NOTES INDICATED ON FLOOR PLAN ARE USED

**DIVISION 3 - CONCRETE**

- 3.1 MIN. 6" STEP DOWN
- 3.2 MIN. 4" STEP DOWN
- 3.3 PRECAST LINTEL
- 3.4 MAX 1/2" STEP DOWN

**DIVISION 4 - MASONRY**

- 4.1a 12" ROUND BLOCK COLUMN W/ 16" SQ. BASE SEE DETAIL "F", SHEET 5-0
- 4.1b 16" ROUND BLOCK COLUMN W/ 24" SQ. BASE SEE DETAIL "F", SHEET 5-0
- 4.1c 8"x8" BLOCK COLUMN W/ 24"x24" SQ. BAS SEE DETAIL "F", SHEET 5-0
- 4.1d 1/2" OF 16" ROUND BLOCK COLUMN W/ 24"x12" SQ. BASE SEE DETAIL "F", SHEET 5-0
- 4.1e 1/2" OF 12" ROUND BLOCK COLUMN W/ 16"x16" SQ. BASE SEE DETAIL "F", SHEET 5-0
- 4.2 16" BLOCK COLUMN - SEE DETAIL "F", SHEET 5-0
- 4.2a 8" BLOCK COLUMN - SEE DETAIL "F", SHEET 5-0
- 4.3 FRONT ENTRY - SEE DETAIL "F", SHEET 5-0
- 4.3a RAISED FRONT ENTRY - SEE DETAIL "F", SHEET 5-0 & "G" SHEET 5-1
- 4.4 FILLED CELLS, SEE FOUNDATION PLAN & DETAIL "A", SHEET 5-1
- 4.4a FILLED CELLS FOR CARRIER OR GIRDER TRUSS, LOCATION NOT TO BE ALTERED.
- 4.5 TYP. HEADER DETAIL - SEE DETAIL "A" SHEET 6-0
- 4.6 TYP. LINTEL SCHEDULE - SEE WINDOW / DOOR SCH. SHEET 6-0
- 4.7 STUCCO QUOINS SEE DETAIL ON SHEET 4-0
- 4.8 FLOW THRU VENT. SEE CALCULATION ON SHEET 1-1
- 4.9 TOP OF CONCRETE BLOCK TO BE AT 11'-4" A.F.F.

**DIVISION 6 - WOODS & PLASTICS**

- 6.1 41" HIGH WALL
- 6.2 4" HIGH WALL
- 6.3 6" HIGH WALL
- 6.4 7" HIGH WALL
- 6.5 8" HIGH WALL
- 6.6 9" HIGH WALL
- 6.7 4" x 6" POST TO CEILING - SEE DETAIL "C", SHEET 5-2 - Section A-A (a)
- 6.7a 4" x 6" POST TO CEILING - SEE DETAIL "C", SHEET 5-2 - Section A-A (b)
- 6.7b 4" x 6" POST TO CEILING - SEE DETAIL "C", SHEET 5-2 - Section A-A (c)
- 6.7c 4" x 6" POST 41" HIGH - SEE DETAIL "C", SHEET 5-2 - Section A-A (c)
- 6.7d 4" x 6" POST 48" HIGH - SEE DETAIL "C", SHEET 5-2 - Section A-A (c)
- 6.8 CEILING TO BE FRAMED @ 8'-0" A.F.F.
- 6.9 8" PLANT SHELF 8" A.F.F. - SEE DETAIL "J" SHEET 5-2
- 6.10 22" x 36" ATTIC ACCESS
- 6.10a ATTIC ACCESS PULL DOWN STEPS - 54" x 22 1/2"
- 6.11 FRAME BLOCKING FOR CABINET INSTALLATION - SEE DETAIL "F" SHEET 5-0 OR 5-1
- 6.13 6" PLUMBING WALL
- 6.13a 8" WALL
- 6.14 (2) 2x8 YP WOOD BEAMS - ADD 1/2" OSB / CDX
- 6.15 (2) 2x12 YP WOOD BEAMS - ADD 1/2" OSB / CDX
- 6.15a (3) 2x12 YP WOOD BEAMS - ADD (2) LAYERS 1/2" OSB / CDX
- 6.16 ART NICHE - SEE DETAIL "H" ON SHEET 5-2
- 6.16a HALL SHELF - SEE DETAIL "H" ON SHEET 5-2
- 6.17 KNEE-WALL (SEE SHEET 5-1 DETAIL "O")
- 6.18 4x4 P.T. WOOD COLUMN
- 6.19 OPENING TO BE EASY ARCH - SEE SHEET 5-2 DETAIL "K"
- 6.20 SEE DETAIL "D" SHEET 5-1 FOR HANDRAIL, RISER AND TREAD INFO.
- 6.22 AIR CONDITIONED ATTIC AC ROOM, MINIMUM 6'-0" x 6'-0" x 3'-0" IF POSSIBLE. ATTIC ACCESS TO BE WITHIN 6'-0" OF AC UNIT

**DIVISION 8 - DOORS, WINDOWS & GLASS**

- 8.1 EMERGENCY EGRESS
- 8.2 GARAGE DOOR ATTACHMENT - SEE DETAIL "B", SHEET 6-0
- 8.3 EXTERIOR DOOR ATTACHMENT - SEE DETAIL "B", SHEET 6-0
- 8.4 20 min. FIRE RATED DOOR
- 8.5 SEE DETAIL "E" SHEET 5-0 FOR BEARING WALL OPENINGS
- 8.6 RADIUS WINDOW - SEE DETAIL "T", SHEET 6-0
- 8.7 TINT WINDOW GLASS
- 8.8 TEMPERED GLASS SHOWER ENCLOSURE

**DIVISION 10 - SPECIALTIES**

- 10.1 MEDICINE CABINET - ROUGH OPENING 14 1/2" x 18 1/2"
- 10.1a WALL MOUNTED MIRROR WIDTH OF VANITY, 42" TALL
- 10.2 ALL A/C DRAINS TO BE RUN ABOVE GROUND, AIR HANDLER 25 GA STEEL, SMOKE AND FIRE PENETRATION AND DUCTING COMPLIES WITH FBC R. 309.1.1
- 10.4 TOWEL BAR TO BE 60" ABOVE FINISH FLOOR UNLESS NOTED OTHERWISE
- 10.5 SURFACE MOUNTED TOILET PAPER HOLDER TO BE 24" ABOVE FINISH FLOOR
- 10.6 TOWEL BAR TO BE 32" ABOVE TOP OF GARDEN TUB
- 10.7 SOAP DISH
- 10.8 TOWEL BAR TO BE 42" ABOVE TOP OF STANDARD TUB
- 10.9 TOWEL RING TO BE 15" ABOVE VANITY COUNTER TOP
- 10.10 PRE-FAB FIBERGLASS TUB/SHOWER COMBINATION
- 10.11 PRE-FAB FIBERGLASS SHOWER ENCLOSURE
- 10.12 INSTALL GRAB BAR PER F.B.C. 2010
- 10.13 INSTALL EXPANDABLE SHOWER CURTAIN ROD

**DIVISION 15 - MECHANICAL / PLUMBING**

- 15.4 PLUMBING ACCESS 12"x12"
- 15.4a JETTED TUB MOTOR ACCESS 18"x18"
- 15.7 SECURE A/C TO PAD W/ (3) #14 SCREWS W/ GASKETED WASHERS EACH SIDE OF UNIT
- 15.8 UPGRADE TO JETTED GARDEN TUB
- 15.11 HOSE BIBB
- 15.12 WASHER ALWAYS TO LEFT OF DRYER
- 15.13 30"Wx48"D CLOSET AC STAND TOP AT 27" A.F.F. MINIMUM
- 15.13a 38"Wx30"D CLOSET AC STAND TOP AT 27" A.F.F. MINIMUM
- 15.13b 48"Wx30"D CLOSET AC STAND TOP AT 30" A.F.F. MINIMUM
- 15.14 CE MAKER LINE W/ SHUT OFF VALVE TO BE LOCATED 12" A.F.F.
- 15.15 SEE PLUMBING DETAIL "D" SHEET 5-2
- 15.17 VENT DRYER THROUGH ROOF, SEE DETAIL "H" ON SHEET 3-1
- 15.17a VENT DRYER THROUGH WALL, SEE DETAIL "H" ON SHEET 3-1
- 15.18 VENT RANGE HOOD OUTSIDE
- 15.18a VENTLESS RANGE HOOD
- 15.18b INSTALL MICROWAVE
- 15.19 HANSEN BOX

**DIVISION 17 - CUSTOM ONLY WHEN NOTED ON PLANS**

- 17.1 FIREPLACE INSTALL PER MANUFACTURER SPECS
- 17.2 INSTALL GARAGE DOOR OPENER
- 17.3 WINDOWS TO BE DOUBLE PANE INSULATED GLASS
- 17.5 TOILET TO BE ADA COMPLIANT
- 17.6 BUMP UP KITCHEN CABINETS AT MICROWAVE
- 17.7 CROWN MOLDING FOR CABINETRY
- 17.8 CROWN MOLDING FOR WALLS
- 17.9 FLUSH WINDOW SILL
- 17.10 ROUNDED CORNER BEAD FOR DRYWALL
- 17.11 CHAIR RAIL @ 42" A.F.F.
- 17.12 ALUMINUM SCREEN ENCLOSURE
- 17.13 36" TALL VANITY
- 17.14 5-1/4" BASE MOLD

**CEILING HEIGHT 8'-0"**

SQUARE FOOTAGE	
LIVING AREA	855 SQFT
CAR PORT	185 SQFT
UTILITY	88 SQFT
<b>TOTAL</b>	<b>1128 SQFT</b>

(SEE SHT. 6-0 FOR WINDOW / DOOR SCHEDULES)

X	4	ZONE
	39.1	DESIGN PRESSURE
TEMP.	(INDICATES TEMPERED GLASS)	
H.I.	(INDICATES HIGH IMPACT GLASS)	

("X" INDICATES CALL NO. FOR WINDOWS)  
(ALWAYS NEGATIVE)  
WINDOWS, DOORS, COMPONENT DESIGN WIND PRESSURES.  
SEE DTL. "H" SHT. 5-1 FOR WINDOW HURRICANE PROTECTION SCHEDULE.

WALL LEGEND	
[Symbol]	INT. BEARING WALL
[Symbol]	INTERIOR WALL
[Symbol]	CMU WALL
[Symbol]	EXTERIOR WOOD WALL
[Symbol]	6" PLUMBING WALL UNLESS NOTED OTHERWISE
[Symbol]	RAISED ENTRY BEARING WALL
[Symbol]	WALL HT. VARIES (SEE PLAN)

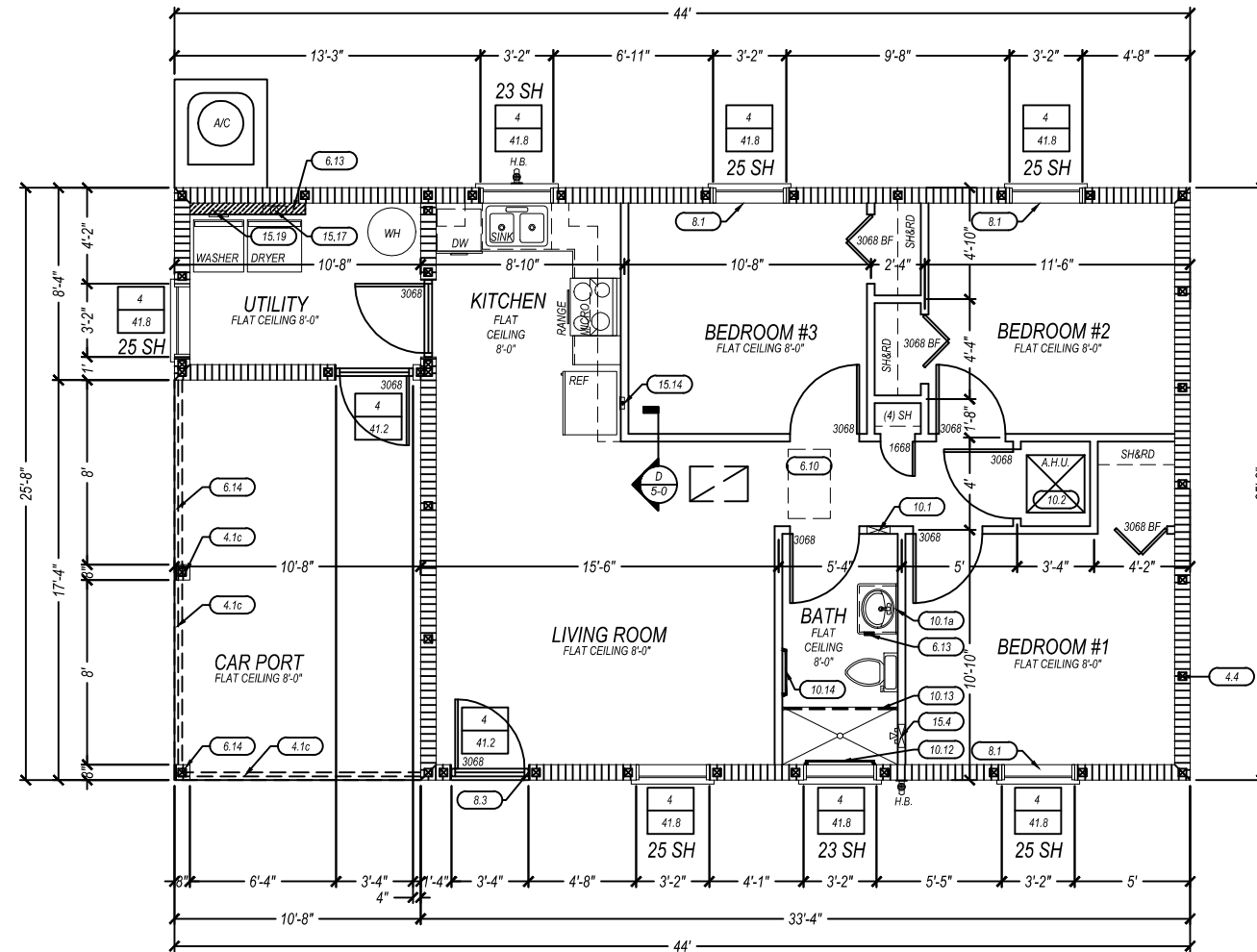
FLOOR LEGEND	
[Symbol]	TILED FLOORS
[Symbol]	SQUARE HATCH PATTERN ON DRAWINGS INDICATE AREA TO BE TILED. REFER TO COLOR SHEET FOR SPECIFICATIONS (SIZE, TYPE ETC)

**NOTE:**  
PLUMBER TO VERIFY SEWER LINE LOCATION WITH SUPER INTENDANT

**NOTE:**  
ALL PLUMBING STUB UPS TO BE IN WALL NOT UNDER CABINETS

**NOTE:**  
ALL ANGLES ARE 45° UNLESS NOTED OTHERWISE

**NOTE:**  
"RISK" CATEGORY II



**R L SQUARED CONSTRUCTION**  
**ROB MELNICK**  
 CERTIFIED BUILDING CONTRACTOR  
 LIC. # 1258573  
 13540 NORTH FLORIDA AVE, STE 201  
 TAMPA, FLORIDA 33613  
 813.477.4829/813.948.7634  
 ROBMEINICK@RLSQUARED.ORG



**TROUPE RESIDENCE**  
**CUSTOM HOME**  
**4913 S 81ST STREET**  
**TAMPA, FL 33619**



**HAROLD RADCLIFFE, P.E.**  
 PROFESSIONAL ENGINEER  
 Structural and Civil Engineering Services  
 LIC. # 6283  
 401 S. Bath Club Blvd.  
 N. Redington Beach, FL 33708  
 Phone 727-392-0509

THIS DRAWING IS THE PROPERTY OF R L SQUARED CONSTRUCTION, UNLESS OTHERWISE PROVIDED FOR BY THE CONTRACT. THE CONTENTS OF THIS DRAWING IS CONFIDENTIAL AND SHALL NOT BE TRANSMITTED TO ANY OTHER PARTY EXCEPT AS AGREED TO BY R L SQUARED CONSTRUCTION.

DATE:	10/1/2012
SCALE:	1/8"=1'-0"
DRAWN BY:	
TITLE:	<b>FLOOR PLAN</b>
JOB #:	DRC-007
SHEET NO.	<b>1-1</b>