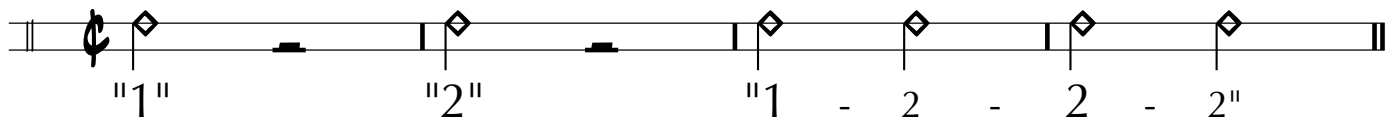


CONGAS or BONGOS

NMEA All State Jazz Audition ETUDE C2 - LATIN

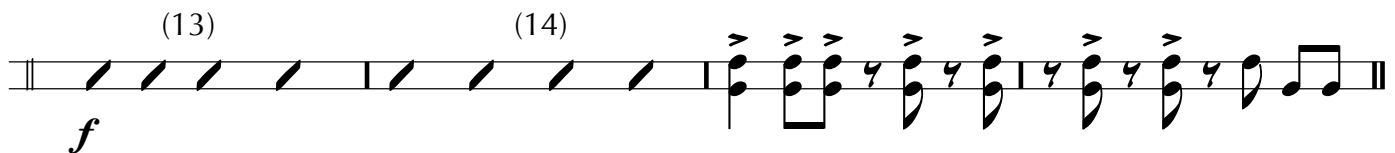
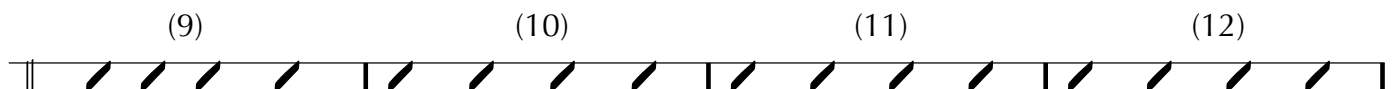
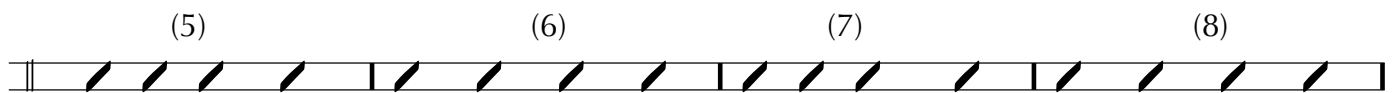
Latin: M.M. ♩ = 88

COUNTOFF:



GROOVE!

(This pattern is a suggested "point of departure". Feel free to use your own *appropriate* groove...)



NMEA All State Jazz Audition ETUDE C2 - Auxiliary Percussion**SHOUT Chorus**

The musical score for the SHOUT Chorus, Auxiliary Percussion part, consists of four staves. The first staff begins with a double bar line and a *ff* dynamic marking. It contains a series of rhythmic patterns represented by eighth and sixteenth notes with stems. The second staff continues the pattern, featuring a slur over the first two measures and a fermata over the third measure. The third staff contains measures 25 through 28, each marked with a measure number above the staff. The fourth staff contains measures 29 through 31, also marked with measure numbers. The piece concludes with a final chord and a double bar line. Dynamics include *ff* at the beginning and a crescendo from *f* to *ff* in the final measures.

ff

(23) (24)

(25) (26) (27) (28)

(29) (30) (31)

f *ff*