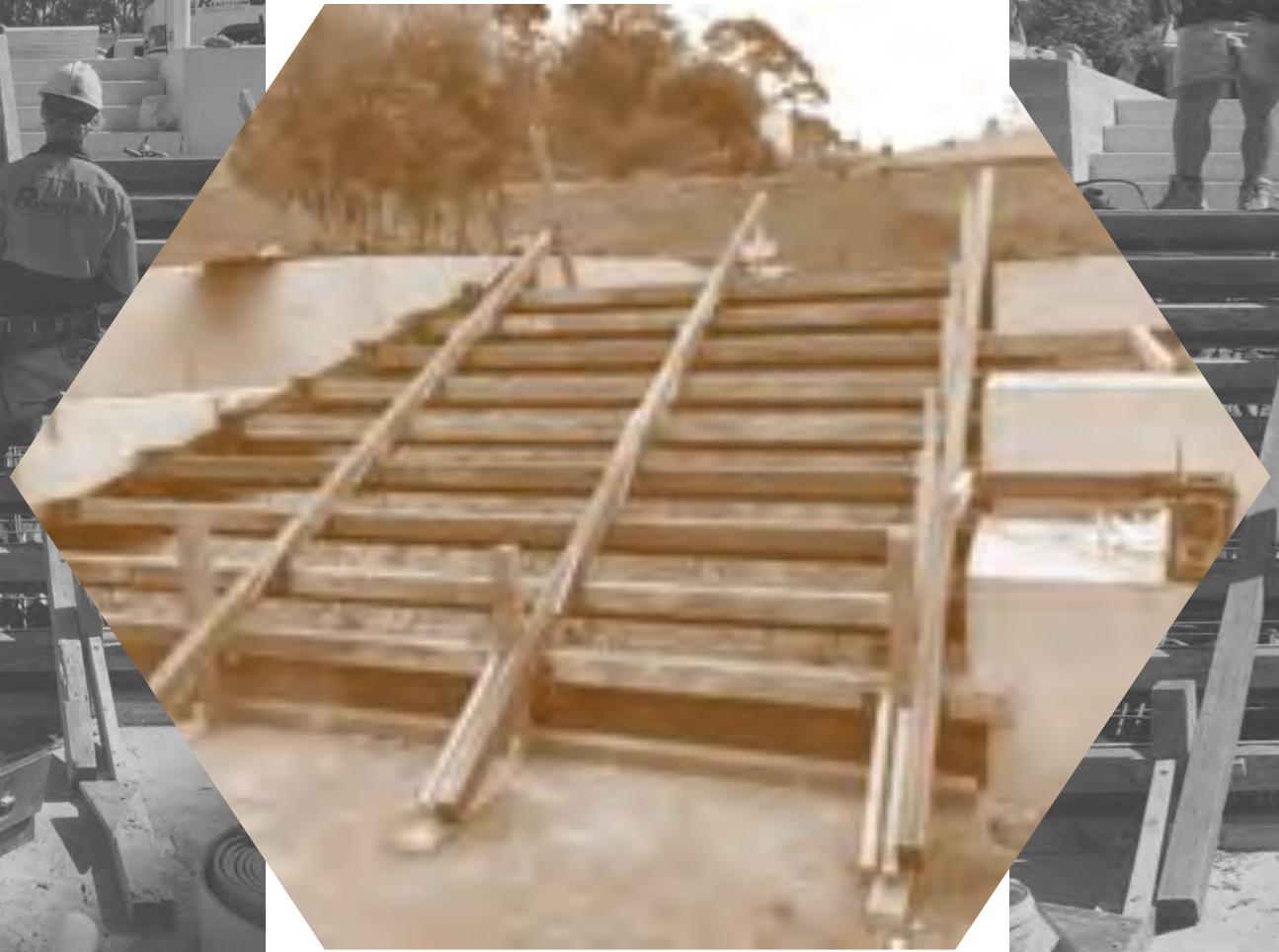


## CAPABILITY STATEMENT

[www.readyform.com.au](http://www.readyform.com.au)

“The mission of ReadyForm is to create and deliver a concrete masterpiece on each and every project we have the privilege of working on. Formwork has become so versatile, in both a foundation and artistic sense. It’s exciting to be involved in an industry that consistently challenges you to think outside the box. The satisfaction for me comes from driving past previous jobs, whether it’s a wall on a freeway or an historic fountain in a park, it feels good to know you’ve contributed towards something that’s bigger than just you.”

**- Dean Buczynski | Owner**





# ABOUT READYFORM |

ReadyForm is one of Australia's leading Formwork, Steelfixing & Concrete companies based on the Central Coast of New South Wales. The company has over 17 years experience in the construction industry, with works completed in a wide range of sectors including Mining, Jetty/Wharf, Luxury Residential, Multi-story, RMS (including B80 concrete), Rail, Hardscape, Water Treatment Plants and beyond.

Run with a hands on approach by it's directors , ReadyForm excels in co-ordination of its projects with a strong focus on safety & efficiency. After many years working with some of Australia's most established construction and engineering companies, ReadyForm is confident with the knowledge and experience gained in all areas of project delivery. From the tender process to job supervision, employee management, office logistics & project completion.

Hard work, honest work and integrity is at the core of ReadyForm's foundations with the belief that any vision is possible if the right people can see it with you. They have a strong team that works together like a local community to produce work of an international standard. ReadyForm has quickly gathered a reputation for it's high quality work, making them the 'go to guys' in concrete construction.



# OUR SERVICES |

2019 saw ReadyForm significantly increase activities across NSW. Increased turnover and profitability has led to further opportunities and expansion in new and existing divisions of expertise.

## **FORMWORK - CIVIL STRUCTURES, COMMERCIAL, RESIDENTIAL |**

- Large quantity intricate formwork
- Columns, plinths, pedestal formwork
- Retaining walls
- Class 2 off form suspended slabs
- Class 2 off form walls
- Stairs (including spiral/ curved)
- Timber board finish formwork
- Water retaining formwork
- Tunnel formwork
- Pits, pump rooms
- Precast

## **STEELFIXING |**

- All associated reinforcement components for any type of concrete construction
- Footings
- Ground slabs
- Walls
- Suspended slabs
- Stairs
- Columns, plinths, pedestals

*' When it comes to Formwork, if you can draw it on paper, we can form it in concrete '*

**- Dean Buczynski—**

## **CONCRETE | B80 (GREY CARD) TRAINED**

- Ground slabs
- Footings
- Walls
- Paths
- Suspended slabs

## **LABOUR / PLANT HIRE |**

- Competitive Rates
- Day Labour
- Contract Hire
- Crane Truck/ Flatbed Truck/ 8 Tonne Excavator



# HEALTH & SAFETY POLICY |

At ReadyForm Pty Ltd we are committed to the prevention of all injuries and work related illnesses to all people involved with our association. No business objective comes before health and safety. It is part of our success to ensure our employees go home each day the same way they arrived in to the work area.

Our objective is to maintain a culture that ensures the health and safety of all personnel though the provision of leadership, management, resources and processes.

Everyone involved with ReadyForm Pty Ltd shall demonstrate a sound commitment to these policies:

- Promote “Be Safe, Stay Safe” which obligates all employees to stop work if it is unsafe to continue.
- Promote a culture in which all sub-contractors and business partners share this commitment.
- Provide and maintain safe systems of work, and ensure all plant and equipment is running at the highest standards.
- Set health and safety targets, and report their performance for continual improvement.
- Provide competent supervision to ensure work areas are at their highest standards.
- Comply with all relevant OH&S regulations and legislation requirements.

We as a team have the responsibility to ensure a safe work environment and identify and manage risks within our workplace.



SAFETY  
FIR

# ENVIRONMENTAL POLICY |

Within our own environment we strive to ensure that every practice is applied with minimal risk to the environment. We strive to do this by:

- Complying with applicable laws, regulations and standards, and applying responsible standards where laws do not exist.
- Working to ensure our activities enhance the environment in which we operate.
- Continually improving our employee's performance through training management in Reviewing, Researching, and Reporting.
- Delay or postpone activities when necessary to ensure effective controls for managing environmental risks are in place.
- Monitor and report openly on achievement of environmental objectives.
- Understand the environmental aspects relating to work activities, the impacts associated with these and apply controls to manage them.
- Take proactive measures to protect the environment.

The responsibility for application of this policy rests with everyone.



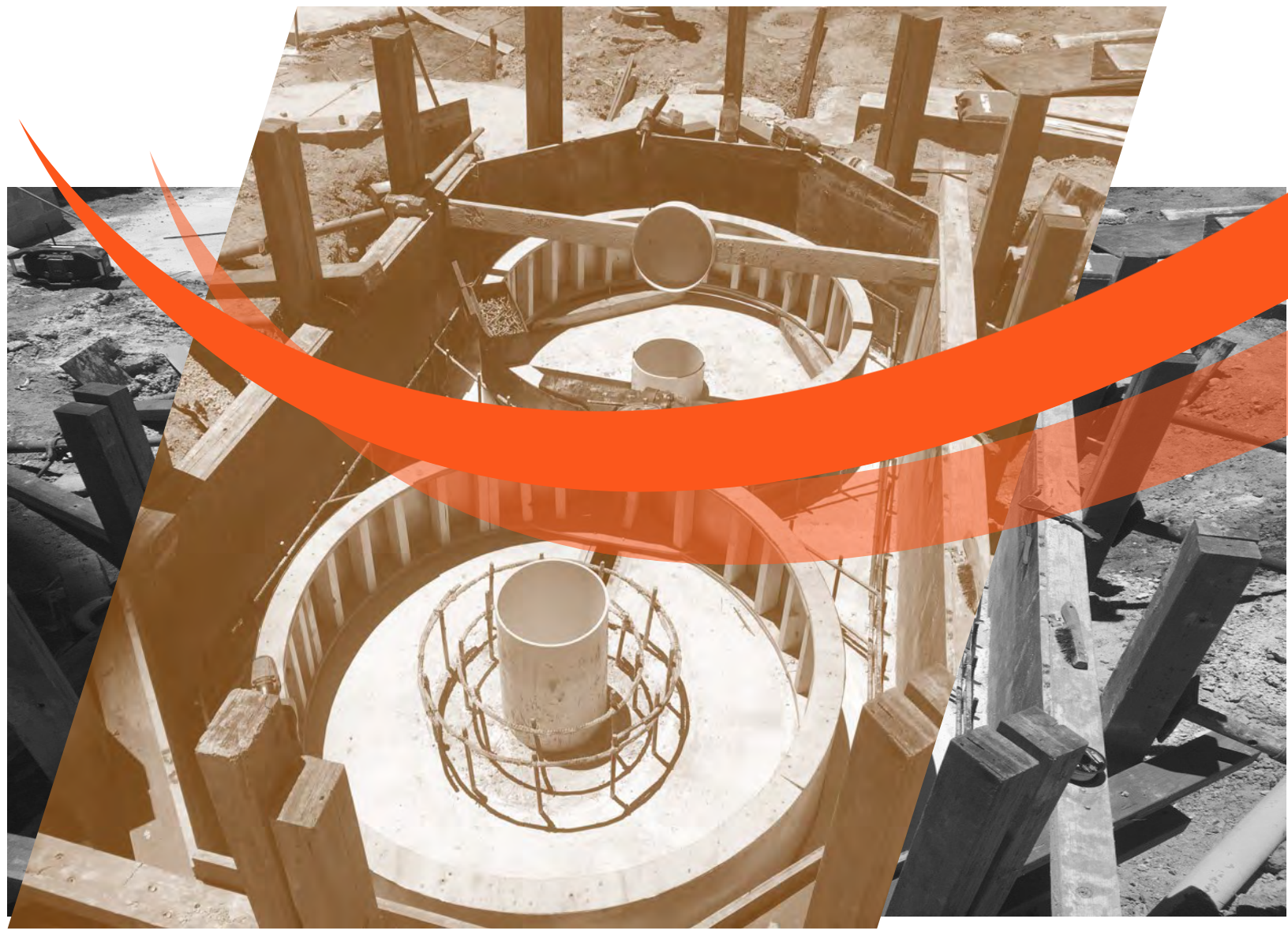


# WHY CHOOSE READYFORM |

ReadyForm has a proven track record of finishing projects on time and within budget while maintaining an excellent standard in quality, safety and environmental areas.

We put an emphasis on effective and efficient working methods to produce work of the highest possible standard.

With client satisfaction being a top priority, we utilise our financial strength, our quality workers and local network connections to meet project expectations each and every time..



# OUR PROJECTS |

## WESTERN SYDNEY STADIUM REBUILD | 2019

**Services** | FRP External Works Package Stairs & Walls

**Principal** | Design Landscapes Pty Ltd

**Client** | Lend Lease

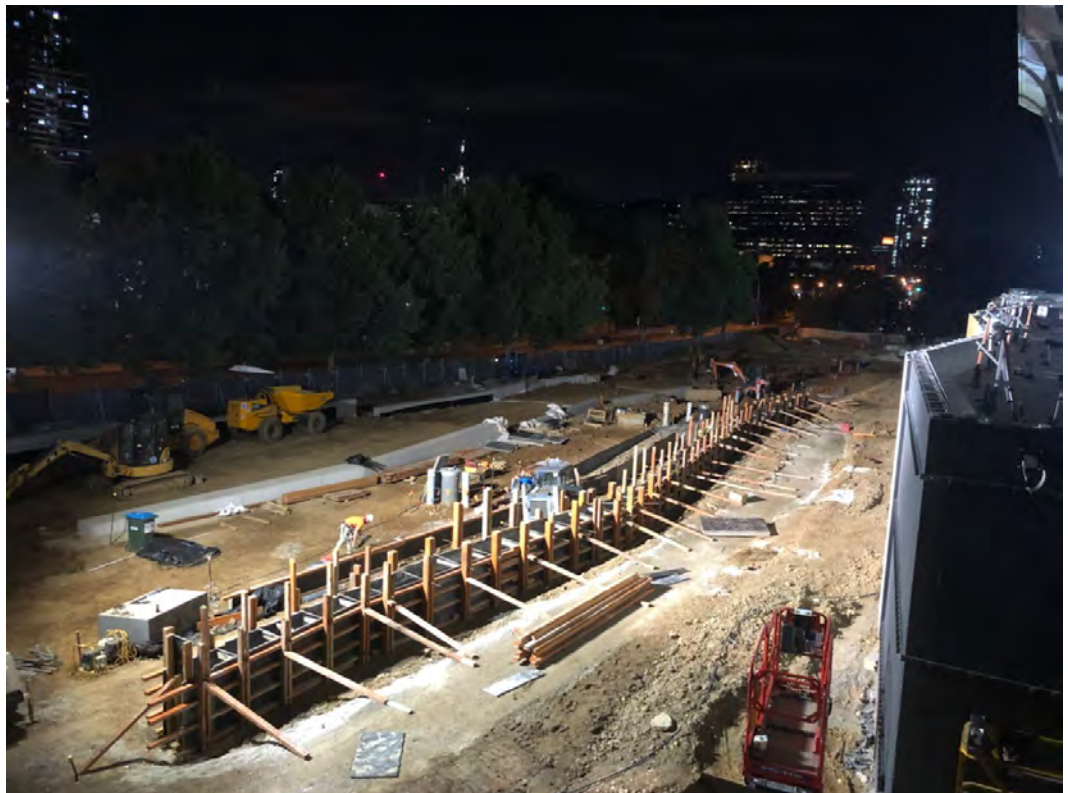
**Location** | Parramatta, NSW

ReadyForm was awarded the FRP contract by Design Landscapes to rebuild the stairs and walls of the new Western Sydney Stadium, NSW. The scope of work for this project included but was not limited to |

- Construction of all external FRP works of rebuild, including 680LM of off form walls, 85LM of staircase and 10,000M2 of pavement

All works were completed 3 weeks ahead of schedule despite some extreme weather conditions and congested site environments. Works associated with the rebuild included|

- High tolerance formwork
- Working with craneage
- Nightworks
- Formwork Complexity





# OUR PROJECTS |

**ARTHUR PHILIP HIGH SCHOOL & PARRAMATTA PUBLIC SCHOOL UPGRADE | 2019-2020**

**Services** | FRP Concrete Works

**Principal** | Glascott Landscape & Civil Pty Ltd

**Client** | Watpac

**Location** | Parramatta, NSW

ReadyForm was awarded the concrete contract by Glascott Landscape & Civil for the APHS & PPS schools in Parramatta, NSW. The scope of work on this project included but was not limited to |

- Construction of over 380LM of off-form walls. 25LMW x 20LMH Amphitheatre. 1200M2 of suspended slab on piers for historical protection, with over 100T of reinforcement steel installed, 400LM of off-form stairs and an array of intricate concrete structures including curved and circular water features and sandpit areas.

Works associated with the construction included |

- Navigation between two simultaneous work areas (primary & high school)
- Long line high pressure concrete pump procedures
- Formwork complexity
- Working with cranes
- Nightworks



# OUR PROJECTS |

## M1 UPGRADE KARIONG TO SOMERSBY | 2019-2020

**Services** | Retaining Walls, F-Type Barriers, VCB Barriers, Drains, Pits,

**Principal** | Fulton Hogan Pty Ltd

**Client** | Roads & maritime Services NSW (RMS)

**Location** | Kariong , NSW

ReadyForm was awarded the contract by Fulton Hogan to carry out the associated concrete works on the M1 Upgrade between Kariong & Somersby on the Central Coast, NSW. The scope of work for this project included but was not limited to |

- Construction of 10 VCB barrier sloped ends, 75LM of F-Type barriers (B80 spec), 350LM of ACO drains, 4 gantry pile cap footings, 800LM of hand poured SO Kerb, 100LM of hand poured VCB barrier kerb, 200 pit riser modifications and multiple extra over variation works on day labour.

All works were completed on schedule under B80 Bridgeworks specification and included |

- Working at heights/ Hot Works | Confined Spaces
- High tolerance formwork
- Working with craneage
- Nightworks
- Long line high pressure concrete pump procedures
- Formwork complexity





# OUR PROJECTS |

## PACIFIC HIGHWAY UPGRADE LISAROW | 2020 (CURRENT)

**Services** | Retaining Walls, Capping Beams, Culverts, No-fines

**Principal** | Daracon Pty Ltd

**Client** | Roads & maritime Services NSW (RMS)

**Location** | Lisarow, NSW

ReadyForm was awarded the FRP contract by Daracon Pty Ltd as part of the Stage 2 Upgrade to the Pacific Highway at Lisarow, NSW . The scope of work on this project included but is not limited to |

- Construction of approximately 1 kilometre of retaining walls, 2 large culvert areas measuring over 800M2 combined, 200LM of capping beam ranging from 1—2 LM high.

All works will be completed under B80 Bridgeworks specification and include |

- Working at heights/ Hot works/ Confined spaces
- High tolerance formwork
- Working with craneage
- Long line high pressure concrete pump procedures
- Formwork complexity



# OUR PROJECTS |

## ACIFIC HIGHWAY UPGRADE OURIMBAH | 2018

**Services** | Retaining Walls, F-Type Barriers, Slab Work

**Principal** | Civil Mining & Construction Pty Ltd

**Client** | Roads & maritime Services NSW (RMS)

**Location** | Ourimbah, NSW

ReadyForm was awarded the contract by CMC to carry out the associated concrete works on the Ourimbah Highway Upgrade. The scope of work for this project included but was not limited to |

- Construction of a 78m long by 4.5m high concrete retaining wall including the integration of an F-Type barrier. The wall was compiled of over 100t of reinforcement steel and 250 m3 of concrete.
- Construction of 230 LM of F-Type Barriers including installing and setting over 250 hold down bolts for guard rails
- Construction of 540m2 bridging slab over stormwater pipe corridor compiled of over 25 tonne of reinforcement steel and 160 m3 of concrete.

All works were completed under B80 Bridgeworks specification and included |

- Working at heights
- High tolerance formwork
- Working with craneage





# OUR PROJECTS |

## VICTORIA PARK WETLAND UPGRADE | 2017

**Services** | Curved Bio Retention Wetland Walls & Pump Pits

**Principal** | Regal Innovations Pty Ltd

**Client** | City of Sydney Council

**Location** | Camperdown, NSW

ReadyForm was awarded the concrete contract by Regal innovations to upgrade the existing bio-retention wetlands in Victoria Parkland. The scope of work on this project was included but not limited to |

- Over 280lm of curved walls and footings ranging from 700mm—1.8m high . This was complied of over 30t of steel and 100m3 of concrete.
- The construction of three pump pits that were 4m underground with internal weir walls and suspended concrete roofs.

Works associated with the construction included |

- Working in water
- Confined Spaces
- Long line high pressure concrete pump procedures
- Formwork complexity



# OUR PROJECTS |

## REDFERN AUSTRALIAN TECHNOLOGY PARK ENTRY | 2018

**Services** | Retaining Walls, Staircases

**Principal** | Glascott Landscape & Civil Pty Ltd

**Client** | Mirvac

**Location** | Redfern, NSW

ReadyForm was awarded the contract by Glascott Landscape & Civil to construct retaining walls and staircases for the entryway at the Australian Technology Park.. The scope of work for this project included but was not limited to |

- Approximately 1100 m2 of retaining walls and footings ranging from 300mm high—4.8m high
- Large staircase consisting of 40 risers and 2 landings

Associated tasks to complete these works included

- Working with craneage
- Intricate formwork constructing curved walls.





# OUR PROJECTS |

## GREYSTANES OVAL | 2016

**Services** | Rainwater Harvesting Tank

**Principal** | Holroyd City Council, NSW

**Client** | Holroyd City Council, NSW

**Location** | Greystanes, NSW

ReadyForm was awarded the contract to build a rainwater harvesting tank at Greystanes Oval. The scope of work for this project included but was not limited to |

- 500,000L water harvesting tank constructed 4m underground and compiled of 100t of reinforcement steel and 300m<sup>3</sup> of concrete.
- Fully suspended concrete roof
- Manhole access shaft
- 

Associated tasks to complete these works included

- Working with craneage
- Confined spaces



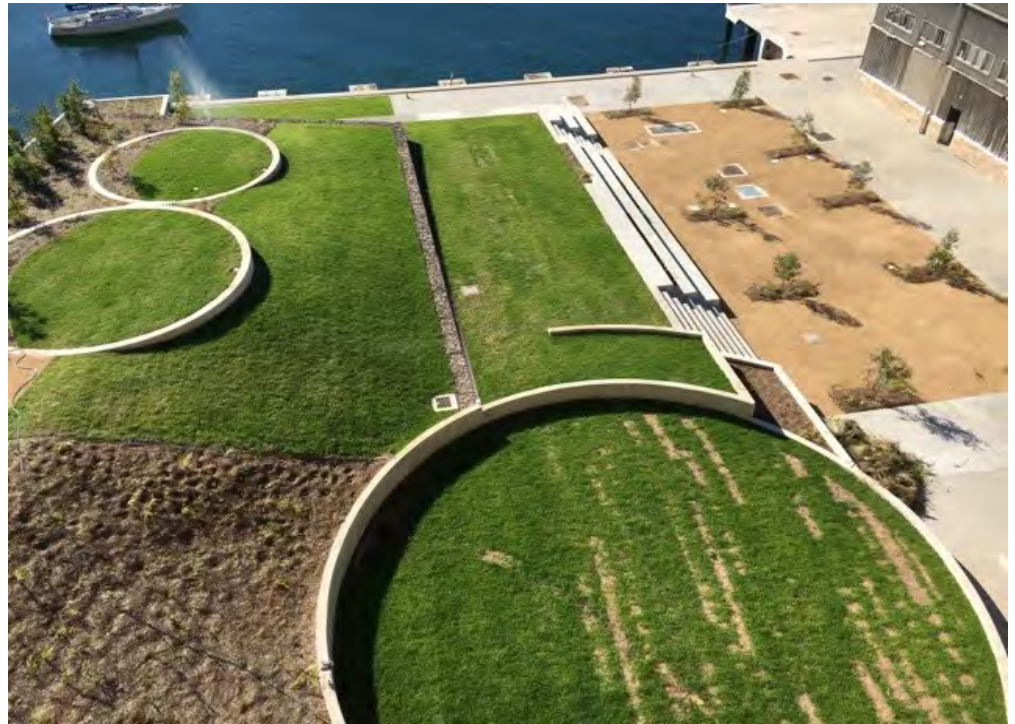


# OUR PROJECTS |

PLATYPUS URBAN PARK |

Glascott Civil & Landscape Pty Ltd

2016, Neutral Bay, NSW



BRETT WHITELEY PLACE | Curved Stairs

Regal Innovations Pty Ltd

2017, North Sydney, NSW





# OUR PROJECTS |

SHELDON | Head Office Signage with Laser Cut Letters

**Sheldon Pty Ltd**

**2017, Upper North Sydney, NSW**



WAITARA PARK | Curved Walls & Amphitheatre Seating

**Regal Innovations Pty Ltd**

**2017, Hornsby Council, NSW**





# OUR PROJECTS |

MITCHELL STREET | Curved Seats & Stairs

**Regal Innovations Pty Ltd**

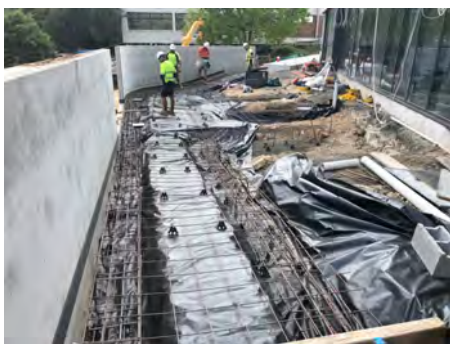
**2018, North Sydney, NSW**



GOSFORD HOSPITAL | External Wall & Pathways

**Lend Lease/ Regal Innovations Pty Ltd**

**2018, Gosford, NSW**





# CONTACT DETAILS |

**Dean Buczynski**

Director | Owner

Mobile | +61413199018

Email | [info@readyform.com.au](mailto:info@readyform.com.au)

**Tessa Cooney**

Director | Accounts

Mobile | +610408504187

Email | [info@readyform.com.au](mailto:info@readyform.com.au)

**Head Office |**

7 Pescud Close

Tumbi Umbi

NSW, 2261

**ABN |** 99 605 371 962

**Website |** [www.readyform.com.au](http://www.readyform.com.au)





**Head Office |**  
7 Pescud Close  
Tumbi Umbi  
NSW, 2261

**ABN |** 99 605 371 962

**Website |** [www.readyform.com.au](http://www.readyform.com.au)