



# COTTON







7G\*1P

**29**  
**CELIA**  
CS2814  
Nm 6800  
100% Cotton

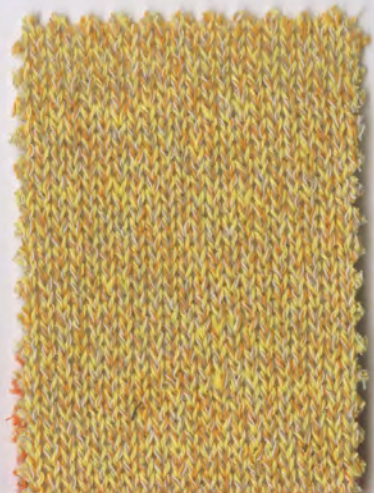


9G\*1P

**30**  
**GYRO**  
FY6317  
Nm 12000  
62% Cotton 38% Nylon



**31**  
**ZALA\*** 9G\*1P  
CS1225  
Nm 11000  
68% Cotton 32% Linen



**32**  
**TIMO** 7G\*1P  
FY7355  
Nm 6800  
64% Cotton  
36% Recycled Nylon



**32**  
**DABOMB** 5G\*1P  
FY2239-1  
Nm 4300  
70% Cotton 30% Nylon



**33**  
**COCO** 7G\*1P  
C2507  
Nm 8200  
96% Cotton 4% Polyester



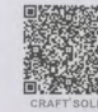
**33**  
**COCO** 5G\*1P  
C5420  
Nm 4400  
97% Cotton 3% Polyester

Products containing cotton can be replaced with BCI and Organic cotton



14G\*1P

**34**  
**NIA**  
CS2649  
Nm 3/90000  
100% Cotton



16G\*1P

**35**  
**ELIANA**  
CS2636  
Nm 2/130000  
69% Cotton 31% Elite



**36**  
**FENDI ORGANIC** 12G\*1P  
FY6319  
Nm 16000  
78% Organic Cotton 22% Nylon



**37**  
**RUMBA ORGANIC** 14G\*1P  
FY7125  
Nm 27000  
100% Organic Cotton



**38**  
**LOAF** 14G\*1P  
FY4420  
Nm 26000  
75% Cotton 25% Nylon



Products containing cotton can be replaced with BCI and Organic cotton





CRAFT'SOLID



CRAFT'SOLID

39

**VELLA II**

14G\*1P Nm 4/101000 C6328

16G\*1P Nm 3/101000 C3302-1

100% Cotton



CRAFT'SOLID

40

16G\*1P **ELMA**

CS2900

Nm 2/80000

80% Cotton 20% Nylon



CRAFT'SOLID

41

16G\*1P **ENZO**

CS2289

Nm 2/90000

55% Cotton 45% Viscose



42

**CRAFT\***

C3403 Nm 4/101000 14G\*1P

C4014 Nm 2/101000 16G\*1P

C3302 Nm 3/101000 16G\*1P

100% Cotton



مۆھرىمەتلىك بولۇپ  
قىزىقۇرۇشقا بولىدۇ



CRAFT'SOLID

43

**SOSO** 16G\*1P

CS2830

Nm 2/60000

58% Cotton 42% Viscose



CRAFT'SOLID

44

**GARSPE** 14G\*1P

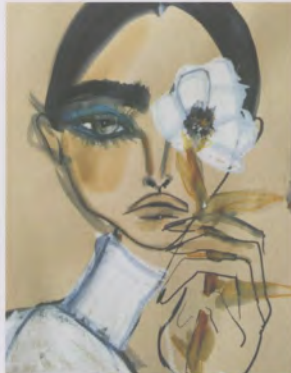
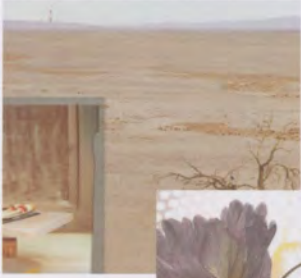
FY7126

Nm 2/64000

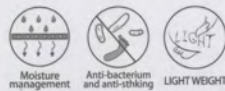
50% Cotton 50% Nylon



# LINEN







**45**  
**TABO**  
 CS0752 Nm 2/44000 12G\*1P  
 CS2090 Nm 8/44000 5G\*1P  
 100%Paper



**46**  
**FENTIS** 16G\*1P  
 CS2774  
 Nm 2/70000  
 82%Paper  
 18%Recycled Nylon



**47**  
**VIRNA** 12G\*1P  
 CS2777  
 Nm 2/28000  
 67%Paper 33%Viscose



**49**  
**KIMO** 14G\*1P  
 CS2616  
 Nm 2/42000  
 78%Acrylic  
 14%Linen 8%Nylon



**48**  
**PURA** 14G\*1P  
 C3767  
 Nm 2/50000  
 55%Hemp  
 45%Organic Cotton



**50**  
**TINO\*** 5G\*1P  
 CS0143  
 Nm 5000  
 63%Linen 37%Cotton



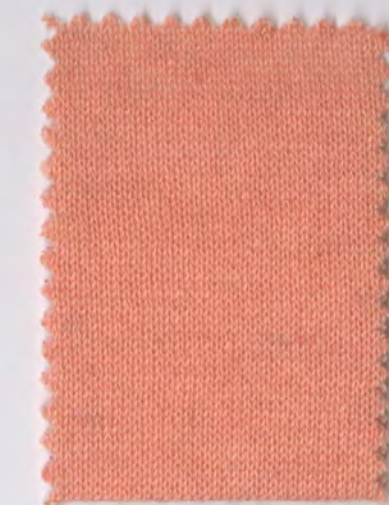
**50**  
**TINO\*** 7G\*1P  
 CS1660  
 Nm 6800  
 51%Cotton 49%Linen



**51**  
**VIKI** 3G\*1P  
 FY6856  
 Nm 3900  
 40%Linen  
 33%Cotton 27%Nylon



**52**  
**RADAR\*** 5G\*1P  
 CS1337  
 Nm 6000  
 55%Linen 45%Cotton



**53**  
**MASCOT** 14G\*1P  
 C6871  
 Nm 2/50000  
 60%Viscose  
 30%Polyester 10%Linen





54

**TORI** 12G\*1P  
CS2131  
Nm 13000  
55%Linen  
45%EcoVero Viscose

LENZING™  
**EcoVero™**



55

**SAVOY** 16G\*1P  
C9242  
Nm 55000  
44%Linen  
36%Cotton 20%Nylon



56

**HEMP** 5G\*1P  
C8577-1  
Nm 4800  
100%Hemp



VERSE



57

**VERSE\***  
C2452-2 Nm 3000 3G\*1P  
C2452-3 Nm 4800 5G\*1P  
C4811-1 Nm 7200 7G\*1P  
C4811-2 Nm 12000 9G\*1P  
100%Linen



58

**LUFT** 12G\*1P  
CS2648  
Nm 19000  
72%Linen 28%Cotton



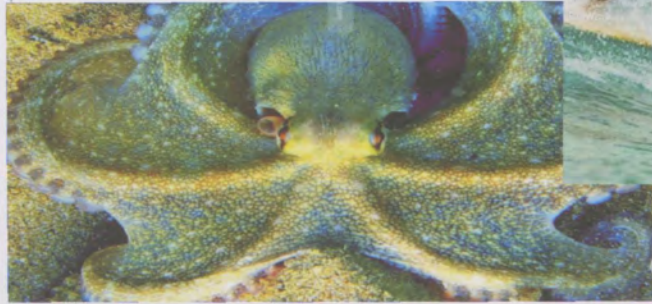
NINO



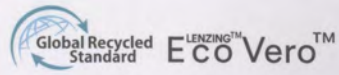
New



Trend







5G\*1P  
**ANNIE**  
 FY7575  
 Nm 6500  
 78%EcoVero Viscose  
 22%Recycled Polyester



ALFRED

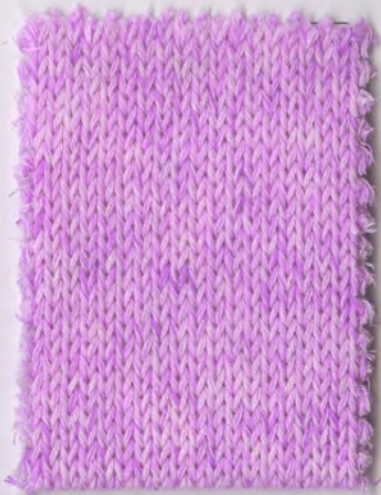


ALFRED



**SYNA**  
 FY7461 Nm 8000 5G\*1P  
 FY6447 Nm 4800 5G\*1P  
 100%Recycled Polyester

60



**61**  
**TOMICA\*** 7G\*1P  
 C7161-1  
 Nm 7200  
 100%Cotton



ALFRED

3G\*1P  
**AMEI**  
 FY7508  
 Nm 7800  
 100%Nylon



NINO SOLID

9G\*1P  
**OWEN**  
 CS2263  
 Nm 2/19000  
 85%Cotton 15%Linen



ALFRED



7G\*1P  
**BERIT**  
 CS2783  
 Nm 6000  
 100%Viscose

64



**65**  
**AURELIA\*** 3G\*1P  
 FY7762  
 Nm 3400  
 90%Cotton  
 6%Polyester  
 4%Metallised Fibre



HOLLY

7G\*1P  
**BERLY**  
 CS2886  
 Nm 8200  
 96%Cotton  
 4%Polyester

66







67  
**OREO\***  
 16G\*1P Nm 105000 CS2296  
 16G\*1P Nm 105000 C7523  
 16G\*1P Nm 105000 C7523-1  
 70%Nylon 30%Polyester



68  
**AUGEN\***  
 16G\*1P  
 CS2498  
 Nm 50000  
 83%Viscose  
 17%Metallised Fibre



69  
**SAMMIE\*** 14G\*1P  
 CS2647  
 Nm 4/101000  
 100%Cotton



70  
**STACY** 16G\*1P  
 C9223  
 Nm 38000  
 52%Linen 48%Wool



71  
**SONNE** 14G\*1P  
 CS2297  
 Nm 4/101000  
 100%Cotton



72  
**ALLYN\***  
 16G\*1P  
 CS2912  
 Nm 30000  
 52%Polypropylene  
 48%Viscose



73  
**TOMMY**  
 12G\*1P  
 FY5098  
 Nm 16000  
 38%Viscose  
 29%Nylon 33%Silk

ALBANY



74  
**LUST** 16G\*1P  
 CS2631  
 Nm 2/80000  
 71%Viscose 29%Nylon

ALFRED



75  
**EILEEN** 14G\*1P  
 CS2598  
 Nm 2/50000  
 50%EcoVero Viscose  
 31%Polyester 13%Nylon  
 6%Metallised Fibre

SNOWY SOLID



LENZING™ EcoVero™





3G\*1P

76

**ANDREA\***

FY6860

Nm 3700

67% Cotton

27% Viscose 6% Nylon



3G\*1P

77

**GINNA**

FY5028

Nm 3400

81% Cotton

19% Nylon



78

**LIDO\***

FY7766

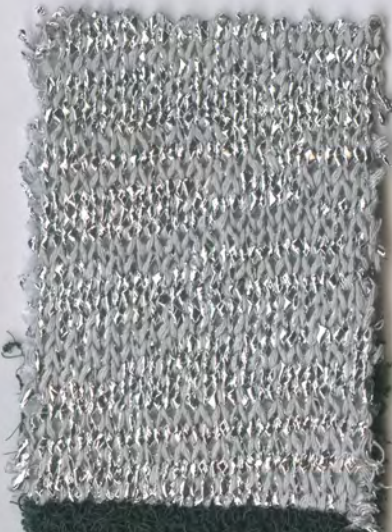
Nm 5200

88% Viscose

10% Metallised Fibre

2% Nylon

5G\*1P



79

**JULIA**

FY7136

Nm 4800

100% Polyester

5G\*1P





# Silk







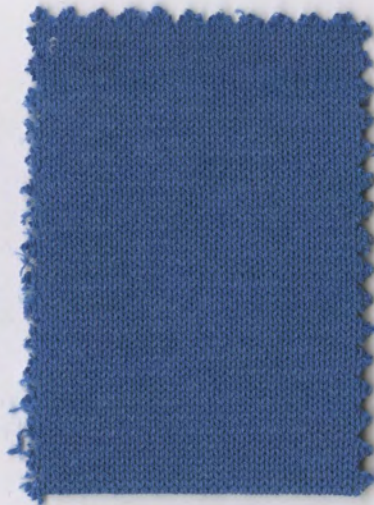
20  
**HERZ\*** 14G\*1P  
 CS2706  
 Nm 4/101000  
 90% Cotton 10% Silk



23  
**LULA** 16G\*1P  
 CS2545  
 Nm 3/90000  
 78% Viscose  
 15% Nylon 7% Silk



14G\*1P  
 21  
**TRARY**  
 CS2799  
 Nm 3/60000  
 55% Silk 45% Cotton



16G\*1P  
 24  
**LAKE**  
 C4790  
 Nm 2/62000  
 75% Silk 25% Viscose



22  
**DERRY** 16G\*1P  
 CS2416  
 Nm 2/120000  
 70% Cotton 30% Silk



25  
**DELLA** 16G\*1P  
 CS2678  
 Nm 2/70000  
 82% Silk 18% Nylon







KITT

26

**NIKKO** 16G\*1P  
CS0788  
Nm 2/60000  
85%Silk 15%Cotton



27

**TAYSIA\*** 16G\*1P  
CS2369  
Nm 100000  
70%Silk 30%Polyester



ALBANY

28

**MAXWELL** 14G\*1P  
CS2501  
Nm 4/85000  
100%Silk





# VISCOSE







01  
**AZURE** 16G\*1P  
 C7645  
 Nm 3/150000  
 65%Viscose 35%Nylon



02  
 16G\*1P **ANAYA**  
 C9557  
 Nm 52000  
 75%Viscose 25%Polyester



03  
**OAKS** 16G\*1P  
 CS2539  
 Nm 3/90000  
 67%Viscose 33%Nylon



04  
 16G\*1P **CALANDO**  
 CS2232  
 Nm 42000  
 71%Viscose 29%Nylon



05  
 16G\*1P **BALBOA II**  
 CS0823  
 Nm 33000  
 77%Viscose 23%Nylon



06  
 16G\*1P **JESSIE**  
 C8549  
 Nm 33000  
 89%Viscose 11%Nylon



07  
**ROMANA** 14G\*1P  
 CS2349  
 Nm 2/55000  
 70%Viscose 30%Nylon



08  
 14G\*1P **PETIT**  
 C8708  
 Nm 26000  
 88%Viscose 12%Nylon







ALFRED

**13**  
**KUBER** 16G\*1P  
CS1237  
Nm 34000  
93%Lyocell 7%Elite



ALFRED

**14**  
**CONNER** 14G\*1P  
C7299  
Nm 27000  
75%Viscose 25%Elite



**15**  
**GIANNA** 16G\*1P  
CS2693  
Nm 2/62000  
92%Viscose 8%Elite

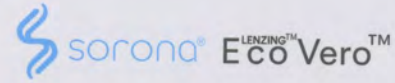


ALFRED

**GIANNA** 14G\*1P  
CS2695  
Nm 2/46000  
93%Viscose 7%Elite



ALFRED



14G\*1P

**16**  
**SORO**  
CS1712  
Nm 2/50000  
70%EcoVero Viscose  
30%Sorona®



SNOWY SOLID



ALFRED



16G\*1P

**17**  
**GREENERY**  
CS2474  
Nm 3/75000  
100%Naia™ Acetate



ALFRED

**18**  
**GLOSS** 14G\*1P  
CS0189  
Nm 2/50000  
100%Tencel



ALFRED

**19**  
**STERN** 14G\*1P  
CS2887  
Nm 2/50000  
90%Viscose 10%Nylon





ALFRED

09

14G\*1P

**NOLA**

C9364

Nm 22000

79%Viscose 21%Nylon



ALFRED

10

16G\*1P

**GRETA**

CS2888

Nm 2/88000

76%Viscose 24%Elite



ALFRED

11

**LENO**

16G\*1P

CS2207

Nm 2/78000

80%Viscose 20%Elite

12

**ALFRED\***

16G\*1P

C3916

Nm 36000

83%Viscose 17%Elite



Anti-bacterium  
and anti-sticking



ANTI-UV

**ALFRED II**

16G\*1P

CS0756

Nm 36000

83%Viscose 17%Elite



ALFRED



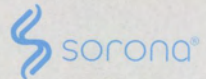




[www.yarnscolors.com](http://www.yarnscolors.com)



SUSTAINABLE  
TEXTILE



Moisture  
management



Anti-bacterium  
and anti-sticking



LIGHT  
WEIGHT



RECYCLED  
PAPER



2023

# SPRING SUMMER



2023



SPRING



SUMMER

COLLECTION

YABNS & COLOBS





# Overture

一月深冬里的大雪 层层细致 包覆大地  
厚雪下生命力的蓄势待发 深深撼动着我们

ECOSNOWY™ 是一场纱线技术的宁静革命  
在柔软亲肤的质地中融入弹性纤维  
突破我们对布料弹性的想象与材质季节的限制

谢谢创作过程中这场美丽的大雪  
一如YARNS & COLORS的初衷  
美学与技术 创意与实践

唯有厚积 方能薄发  
让每一件作品 兼柔并蓄 超乎想象

ECOSNOWY™ has steadily revolutionized yarn technology  
Through blending elastic fibers, into a soft, skin-friendly  
texture and expending past the limitations of fabric elasticity  
and seasonally restricting material.

Honoring our journey of 30 years, with our inspiration,  
ECOSNOWY™ allows YARNS & COLORS to uphold its  
original ideals-Aesthetic and Technology, Creativity  
and Practice.



## CORE CONCEPT

环绕在ECOSNOWY™外的绿色箭头表达出取材于欧洲奥地利最优良的可再生木源，可降解，有效减少污染，强调经营永续发展的环境 CREATE A GREENER LIFE FOR YOU。

The green arrow around ECOSNOWY™ expresses the best renewable wood source from Europe and Austria. This degradable source effectively reduces pollution and emphasizes the environment of sustainable development to CREATE A GREENER LIFE FOR YOU.

## GUARANTEED TO KEEP THE EARTH GREEN



## CHARACTERISTIC

ECOSNOWY™中的Viscose取材于欧洲奥地利的可再生木源，经过认证经营良好的森林为FSC合作会员，可降解，有效减少污染，采用世界环保标准的绿色工艺。在柔软亲肤的质地中融入弹性纤维，突破对布料弹性的想象与材质季节的限制。

ECOSNOWY™ Viscose is derived from the best renewable wood source in Europe and Austria. It is FSC certified members and utilizes well-managed forests so that it can be degraded and effectively reduce pollution. By adopting this green technology, ECOSNOWY™ Viscose meets the environmental protection standards. By blending elastic fiber into the soft and skin-friendly texture, it breaks through any restriction from the cloth's elasticity and material.

## FUNCTION

ECOSNOWY™所有产品，根据不同产品功能有所不同（吸湿排汗/抗菌/抗紫外线/可机洗）。

ECOSNOWY™ products that holds different functions: moisture absorption and perspiration /antibacterial/ultraviolet resistance/machine washability.



### Sustainable X Degradable

ECOSNOWY™ Viscose is derived from the best renewable wood source in Europe and Austria. It is FSC certified members and utilizes well-managed forests so that it can be degraded and effectively reduce pollution. By adopting this green technology, ECOSNOWY™ Viscose meets the environmental protection standards. By blending elastic fiber into the soft and skin-friendly texture, it breaks through any restriction from the cloth's elasticity and material.

ECOSNOWY™中的Viscose取材于欧洲奥地利的可再生木源，经过认证经营良好的森林为FSC合作会员，可降解，有效减少污染，采用世界环保标准的绿色工艺。在柔软亲肤的质地中融入弹性纤维，突破对布料弹性的想象与材质季节的限制。

ECOSNOWY™のViscoseはヨーロッパオーストリアの世界的な繊維メーカーより再生可能なバルブを使用し、世界の環境保護基準のグリーンテクノロジーを採用することで、分解性があり効果的に汚染を減らし、FSC基準を満たすことができます。肌に優しい素材にストレッチ繊維を組み合わせ、シーズンレスで長く楽しめます。





# Fabric characteristics

UPGRADING NATURAL MATERIAL

天然材质 科技升级

## >>DECOMPOSABLE

Since Viscose fiber is a natural fiber extracted from trees, it can be decomposed by natural microorganisms, effectively reducing environmental pollution.

## >>可降解

由于Viscose纤维是从树木中提取的天然纤维，能被自然微生物分解，有效减少污染。

## >>COMFORT

Full of elasticity with a smooth cashmere touch, ECOSNOWY™ ensures the natural comfort for sensitive skin. Through repeated washing and drying cycles, the viscose fibers will still remain soft and wrinkle-free.

## >>舒适性

充满弹性，有羊绒平滑手感，ECOSNOWY™ 确保敏感肌肤的自然舒适，经过反复的洗涤和干燥循环，Viscose纤维能够一直保持柔软，不易皱。

## >>SPORTSWEAR

In our athleisure sportswear collection, ECOSNOWY™ is able to protect her body from heat loss while eliminating all the sweat produced during exercise. The natural viscose makes the clothes dry, breathable, light and soft, while the PBT polyester gives excellent elasticity, satisfying any and every form of exercise.

## >>运动服饰

在高性能运动服饰上，ECOSNOWY™ 能够保护身体热量不被散失以及快速排出运动所产生的汗水。天然的Viscose成分带来干爽透气，更轻更柔软，PBT (polyester) 拥有极好的弹性，可以满足人体对运动上的要求。

# Whole garment

突破设计局限 创造时尚新视野

BREAKING THROUGH DESIGN LIMITATIONS

CREATING A NEW VISION FOR FASHION

In addition to YARNS&COLORS breakthroughs in development of our raw materials, we've also upgraded our yarn's elasticity, tension and density stability. In recent years, it has become the most valuable and resourceful yarn of the latest knitting production equipment-3D integrated molding WHOLE GARMENT, ultimately reducing the loss of seamless production technology, and providing more comfort to the body.

YARNS&COLORS除了原物料，材料的突破，同时也升级现在的纱线弹力，张力与密度的稳定性。近年来也成为最新针织生产设备3D一体成型WHOLE GARMENT的最主要纱线，降低无缝生产技术的损耗问题，更好的体现出一体成型对人体曲线的贴身要求与舒适。



# FSC COOPERATIVE MEMBER

TAKE FROM AND GIVE BACK TO NATURE

取之自然 回馈自然

Our partner



FSC主要概念在于：顾全人与森林能够在环境、社会、经济三方面的互动模式中取得平衡。

- >> 每砍一棵树木就会重新种植一棵，对砍伐过后的土地环境做更深入的保护。
- >> 木材加工的各个生产环节，包括从原木的运输、加工到流通整个链条进行鉴定以确保最终产品源自于经过认证经营良好的森林。
- >> 产品通过贸易和制造到达零售商和消费者手中之全过程可追溯。

FSC's mission is to achieve a balance between people and nature in an environmental, societal and economical way.

- >> Every time a tree is cut down, it will be replanted and further protected.
- >> All production links of wood processing, transportation, and circulation of logs, are identified to ensure that the final products come from certified and well-managed forests.
- >> Products are traceable through trade, manufacturing, retailers, and consumers.





**SNOWY★** 14G\*1P  
C2795  
Nm 2/50000  
72%EcoVero Viscose  
28%Polyester



**SNOWY★** 9G\*1P  
C8858  
Nm 10000  
72%EcoVero Viscose  
28%Polyester

**SNOWY★** 7G\*1P  
C8860  
Nm 7000  
72%EcoVero Viscose  
28%Polyester



Anti-bacterium  
and anti-sticking



LENZING™ Eco Vero™





**ATHENAWOOL** 14G\*1P  
CF0598  
Nm 2/68000  
52%Viscose 38%Polyester  
10%Wool



16G\*1P

**ARES FSC**  
CF0706  
Nm 2/80000  
58%Nylon 32%FSC Viscose  
10%RWS Wool



**ECO SNOWOOL** 14G\*1P  
CF0650  
Nm 2/49000  
43%EcoVero Viscose  
42%Nylon 15%Wool



LENZING™  
**Eco Vero™**



14G\*1P  
**ELVIS**  
C7699-1  
Nm 2/50000  
45%Acrylic  
30%Polyester 25%Wool



**PELAGIA** 14G\*1P  
C9051  
Nm 2/60000  
43%Viscose  
25%Wool 32%Nylon



14G\*1P  
**SNOWOOL**  
C5053-1  
Nm 2/49000  
43%Viscose  
42%Nylon 15%Wool







**SUNNY** 14G\*1P  
 C3208  
 Nm 2/50000  
 72%EcoVero Viscose  
 28%Polyester



LENZING™  
**Eco Vero™**

14G\*1P **ATHENA**  
 C3003  
 Nm 2/68000  
 62%EcoVero Viscose  
 38%Polyester



LENZING™  
**Eco Vero™**



**RETRO** 14G\*1P  
 C9995  
 Nm 2/68000  
 62%Viscose  
 38%Polyester



14G\*1P **COSTA**  
 CS1937  
 Nm 2/50000  
 70%EcoVero Viscose  
 30%Sorona®



 **sorona** LENZING™  
**Eco Vero™**





14G\*1P **CAMDEN ECO HT**  
CF0620  
Nm 2/48000  
50%EcoVero Viscose  
23%Nylon 27%Polyester

LENZING™  
**Eco Vero™**



**PANSY II** 14G\*1P  
C3043  
Nm 2/48000  
79%Viscose  
21%Nylon



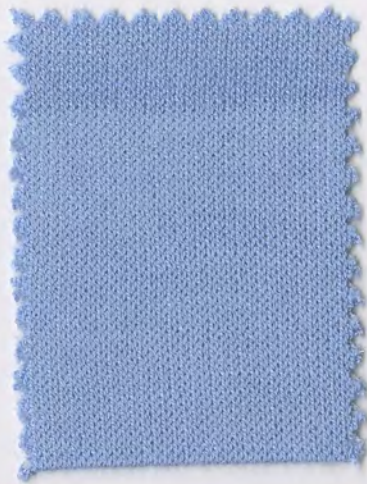
16G\*1P **VIGODA FSC**  
CS2583  
Nm 2/80000  
82%FSC Viscose  
18%Polyester



**CHLOE** 14G\*1P  
C4693  
Nm 2/48000  
70%Tencel  
30%Polyester  
**MINI CHLOE** 16G\*1P  
CS2531  
Nm 2/62000  
79%Tencel  
21%Polyester







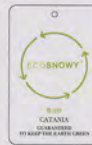
**SNOWPOLY** 14G\*1P  
 CS1855  
 Nm 2/50000  
 72%EcoVero Viscose  
 28%Recycled Polyester



LENZING™  
**Eco Vero™**



12G\*1P **CATANIA**  
 CS0865  
 Nm 2/40000  
 47%PTT 30%Viscose  
 23%Polyester



**AMELIA** 12G\*1P  
 CS1876  
 Nm 2/42000  
 62%Viscose 24%Polyester  
 10%Nylon 4%Metallised Fibre



14G\*1P **CANVAS\***  
 C9612 / C9820  
 Nm 2/50000  
 72%EcoVero Viscose  
 28%Polyester



LENZING™  
**Eco Vero™**



SUSTAINABLE  
 TEXTILE



	1	2	3	4	5	6	7	8
A	 YC9252	 YC9251▲	 YC4135	 YC6611命▲	 YC1860●命▲	 YC4086▲	 YC6594#	 YC4170#
B	 YC9266	 YC4131●	 YC4143●▲	 YC6607#●	 YC2838#▲	 YC9254	 YC4091▲	 YC9256
C	 YC4178#	 YC1872●	 YC6587#●	 YC2837-1#命▲	 YC1865#命▲	 YC9255	 YC1885●▲	 YC1887●▲
D	 YC1873命	 YC4132	 YC9253	 YC6609#	 YC4085命▲	 YC6612●▲	 YC6595#	 YC4171#
E	 YC6581#	 YC9267	 YC6586#	 YC1861#●命	 YC9243▲	 YC4090	 YC1867▲	 YC6599#
F	 YC6580#▲	 YC6583#	 YC6584#●	 YC6589#	 YC1866●命▲	 YC6593#	 YC6596#	 YC6614●
G	 YC6619▲	 YC4133	 YC6618●▲	 YC4079命▲	 YC2840-1#●命	 YC6592-1	 YC4112#▲	 YC6615●



9



YC4100●▲



YC6601-1▲



YC6597-1



YC4096●



YC9259



YC6613▲



YC4094●▲

10



YC4102●▲



YC4097●



YC9261



YC9257



YC9258



YC9263▲



YC9262

11



YC6663▲



YC6602#



YC9260



YC4104●▲



YC4110▲



YC1882●



YC6600-1

12



YC4175#



YC1883



YC4108



YC6603#



YC4115●



YC9248



YC4111●▲

13



YC1874●▲



YC4113●



YC4176#



YC9265▲



YC4118●▲



YC9268



YC6605#

14



YC4177#●▲



YC9264



YC1875#



YC6573#



YC6574#

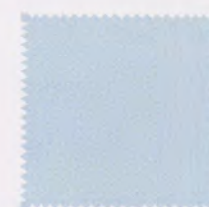


YC9249



YC6576#▲

15



YC6617▲



YC6577#



YC9250



YC4121●▲



YC6571#



YC4123●▲



YC6572#

16



YC1858●▲



YC6570#



YC9412▲



YC6616▲



YC1877#



YC1876#



YC4124●▲



17



YC1859●命



YC4072▲



YC2832#●命▲



YC2833#命▲



YC1857●▲



YC6569#●▲



YC9380

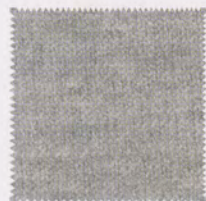
18



YC2836#命▲



YC2831#▲



YC2834#命



YC6604#●



YC4074▲



YC5281#命



YC1878●命▲

19



YC6606#



YC4073●▲



YC2835#命▲



YC1856#●命▲



YC4071#命



YC4080●命▲



YC1854●命▲

▲命●	YC1854	19G	▲●	YC4102	10A		YC6597-1	9C	
▲命#●	YC1856	19D	▲●	YC4104	11D	#	YC6599	8E	
▲●	YC1857	17E		YC4108	12C		YC6600-1	11G	
▲命●	YC1858	16A	▲命	YC4110	11E	▲	YC6601-1	9B	
命●	YC1859	17A	▲●	YC4111	12G	#	YC6602	11B	
▲命●	YC1860	5A	▲#	YC4112	7G	#	YC6603	12D	
命#●	YC1861	4E	●	YC4113	13B	#●	YC6604	18D	
▲命#	YC1865	5C	●	YC4115	12E	#	YC6605	13G	
▲命●	YC1866	5F	▲●	YC4118	13E	#	YC6606	19A	
▲	YC1867	7E	▲●	YC4121	15D	#●	YC6607	4B	
●	YC1872	2C	▲●	YC4123	15F	#	YC6609	4D	
命	YC1873	1D	▲命●	YC4124	16G	▲命	YC6611	4A	
▲●	YC1874	13A	●	YC4131	2B	▲●	YC6612	6D	
#	YC1875	14C		YC4132	2D	▲	YC6613	9F	
#	YC1876	16F		YC4133	2G	●	YC6614	8F	
#	YC1877	16E		YC4135	3A	●	YC6615	8G	
▲命●	YC1878	18G	▲●	YC4143	3B	▲	YC6616	16D	
●	YC1882	11F	#	YC4170	8A	▲	YC6617	15A	
	YC1883	12B	#	YC4171	8D	▲●	YC6618	3G	
▲●	YC1885	7C	#	YC4175	12A	▲	YC6619	1G	
▲●	YC1887	8C	#	YC4176	13C	▲命	YC6663	11A	
▲#	YC2831	18B	▲#●	YC4177	14A	▲	YC9243	5E	
▲命#●	YC2832	17C	#	YC4178	1C		YC9248	12F	
▲命#	YC2833	17D	命#	YC5281	18F		YC9249	14F	
命#	YC2834	18C	▲#●	YC6569	17F		YC9250	15C	
▲命#	YC2835	19C	#	YC6570	16B	▲	YC9251	2A	
▲命#	YC2836	18A	#	YC6571	15E		YC9252	1A	
▲命#	YC2837-1	4C	#	YC6572	15G		YC9253	3D	
▲#	YC2838	5B	#	YC6573	14D		YC9254	6B	
命#●	YC2840-1	5G	#	YC6574	14E		YC9255	6C	
命#	YC4071	19E	▲#	YC6576	14G		YC9256	8B	
▲	YC4072	17B	#	YC6577	15B		YC9257	10D	
▲●	YC4073	19B	▲#	YC6580	1F		YC9258	10E	
▲	YC4074	18E	#	YC6581	1E		YC9259	9E	
▲命	YC4079	4G	#	YC6583	2F		YC9260	11C	
▲命●	YC4080	19F	#●	YC6584	3F		YC9261	10C	
▲命	YC4085	5D	#	YC6586	3E		YC9262	10G	
▲	YC4086	6A	#●	YC6587	3C	▲	YC9263	10F	
	YC4090	6E	#	YC6589	4F		YC9264	14B	
▲	YC4091	7B		YC6592-1	6G	▲	YC9265	13D	
▲●	YC4094	9G	#	YC6593	6F		YC9266	1B	
●	YC4096	9D	#	YC6594	7A		YC9267	2E	
●	YC4097	10B	#	YC6595	7D		YC9268	13F	
▲●	YC4100	9A	#	YC6596	7F		YC9380	17G	
							▲	YC9412	16C

# : Melange

● : Stock service in EU

命 : Stock service of Athena

▲ : Stock service of Snowy

Noted: Snowy/Athena/Sunny available melange



*Let us  
spin a better future together*

[www.yarnscolors.com](http://www.yarnscolors.com)



CONTACT

+86-51266291126

[sales@yarnscolors.com](mailto:sales@yarnscolors.com)



SUSTAINABLE  
TEXTILE

LENZING™  
Eco Vero™



Moisture  
management



Anti-bacterium  
and anti-stinking



ANTI UV



RECYCLED  
PAPER



YARNS & COLORS

ECOSNOWY™

VOL.2



ECOSNOWY™  
雪花纱

YARNS & COLORS



# SILK DRY



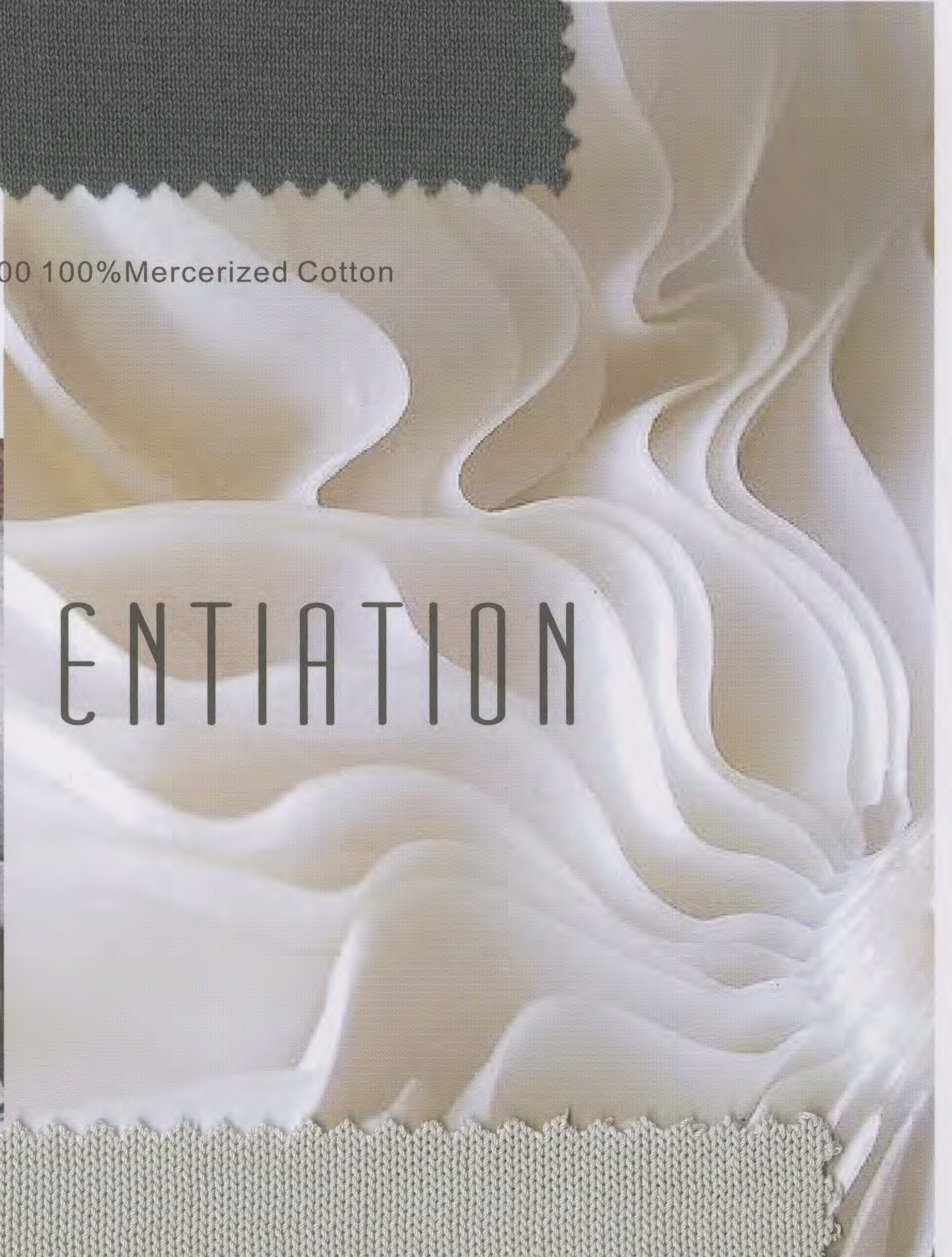
No1 : DENISE CS1489 Nm 6000 50%Silk 50%Cotton







No2 : ELTON CS1096 Nm 2/110000 100% Mercerized Cotton



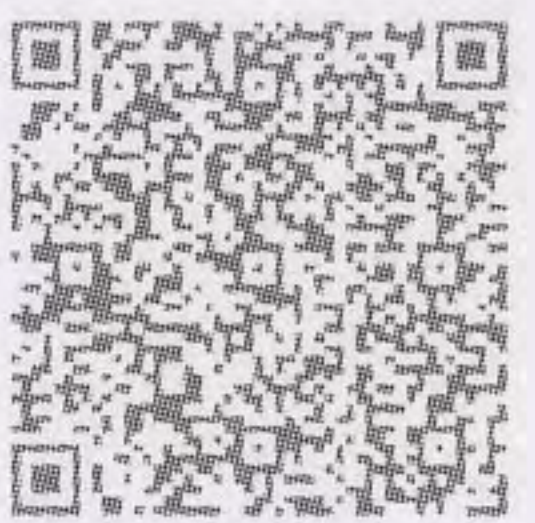
No2 : ELTON CS2063 Nm 13500 100% Mercerized Cotton







No3 : CLOVER CS1790 Nm 3/102000 80%Cotton 20%Linen



.....GREAT QUALITY





No4 : ZUMBA CS2295 Nm 2/116000 100%Silk



LIGHT



*Silk refresh*





**No5 :** TIM CS0710 Nm 2/120000 55%Tencel 25%Cotton 20%Silk

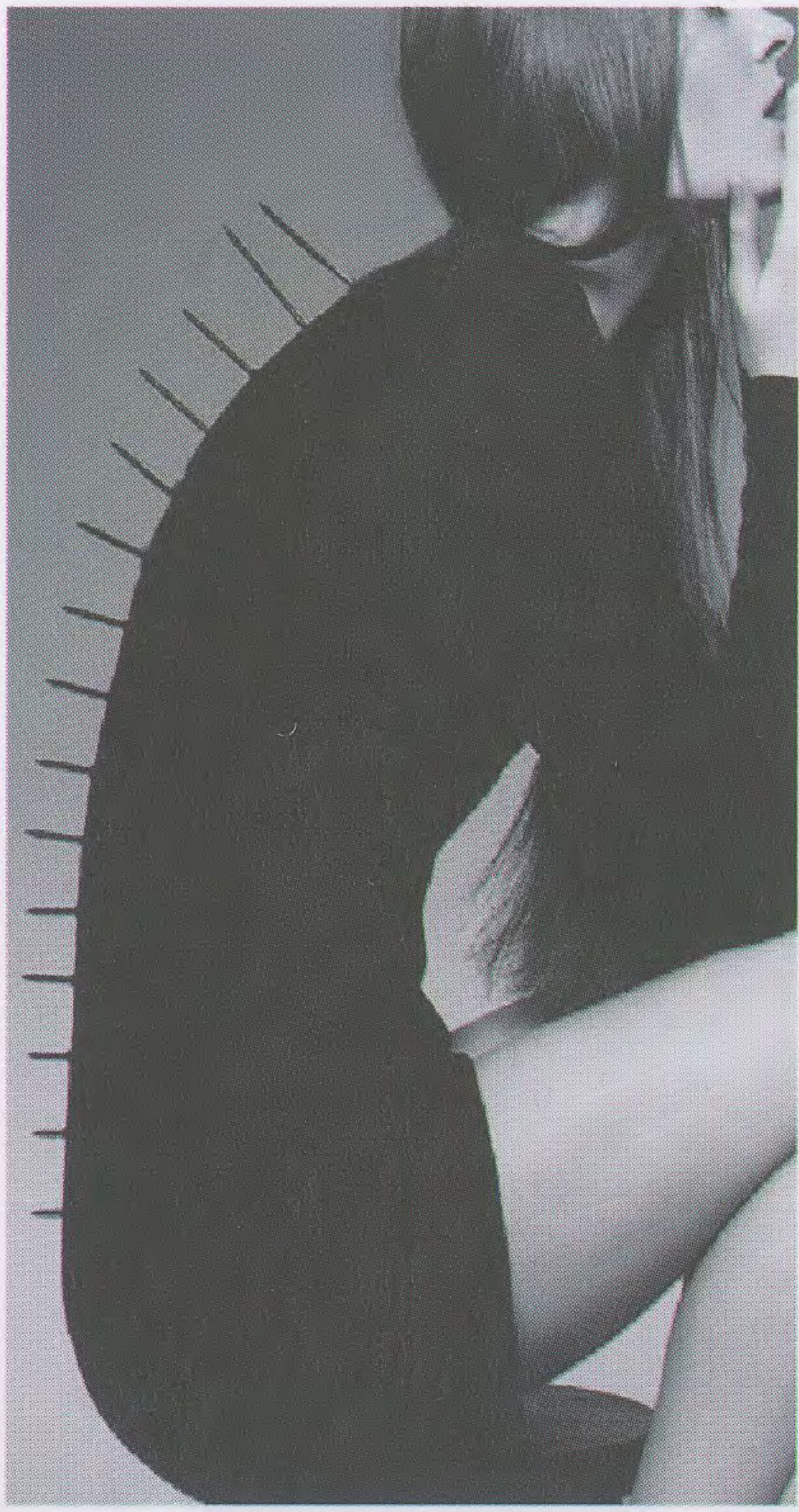
SPIRIT



**No6 :** CONNOR CS1217 Nm 3/105000 85%Cotton 15%Silk







UPCYCLE



No7 : ONLY CS1604 Nm 27000 47%Nylon  
44%Viscose 9%Metallised Fibre





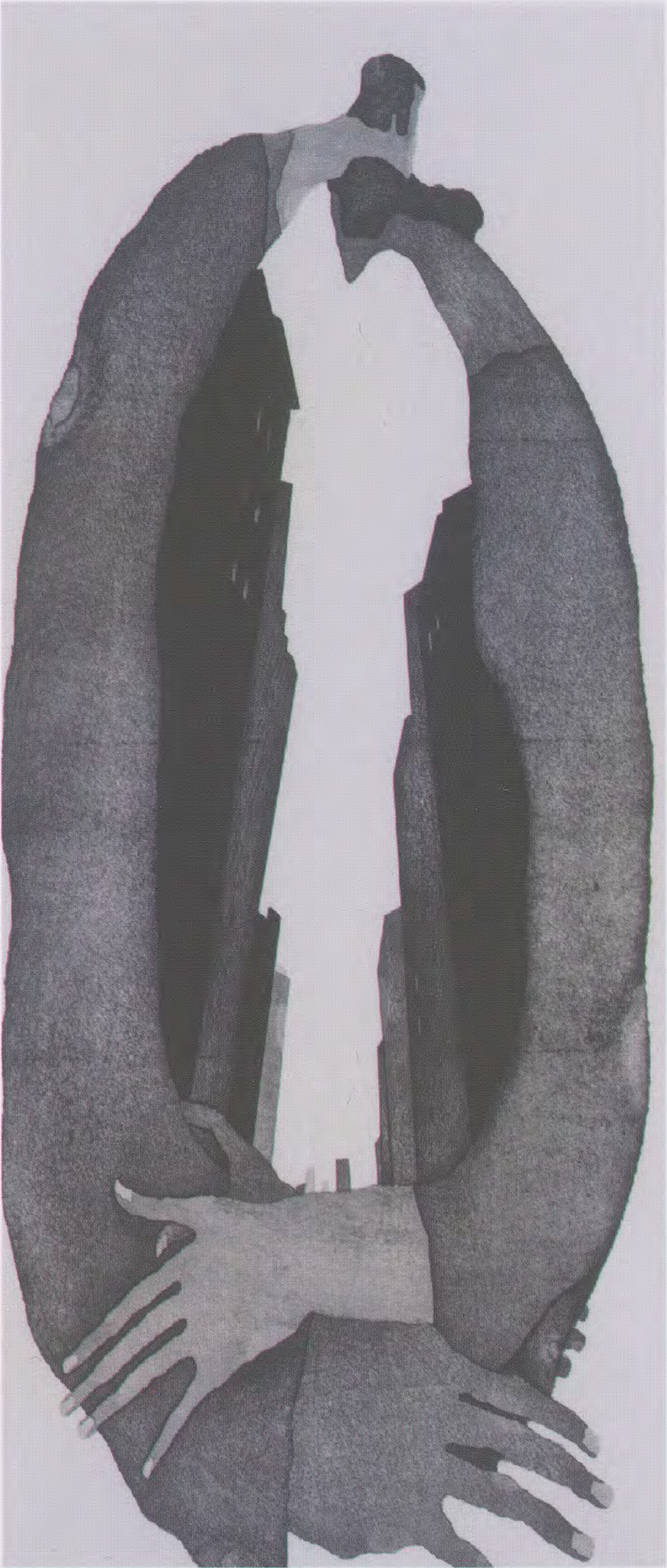
No8 : LOFT C6175 Nm 38000 75%Viscose 25%Polyester



No7 : TOPIA FY4085 Nm 31700 51%Nylon 49%Viscose







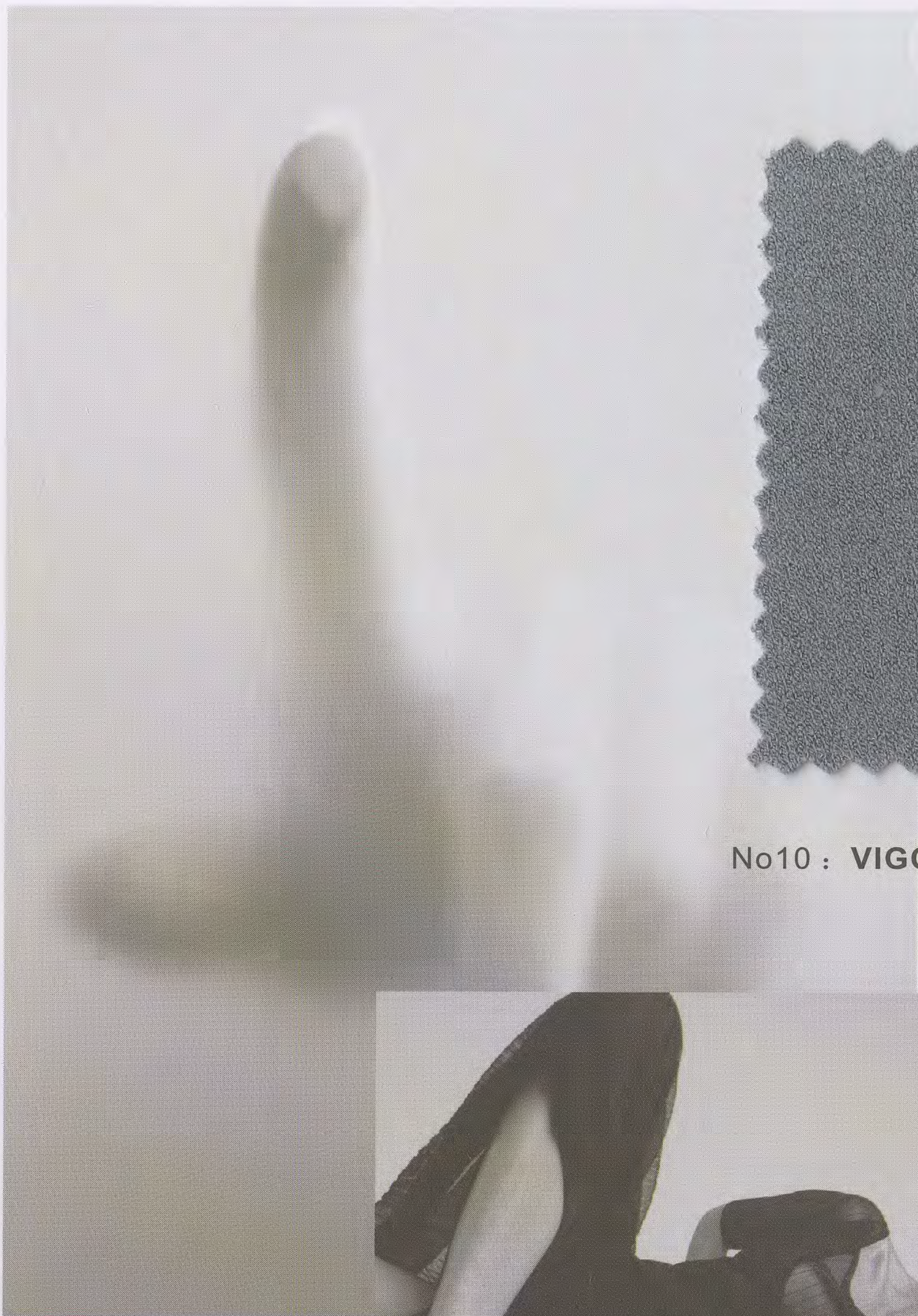
# TACTILE



No9 : GRECO C9019 Nm 3/80000 50%Wool 50%PVA







No10 : **VIGODA** C8644 Nm 2/80000 82%Viscose 18%Polyester



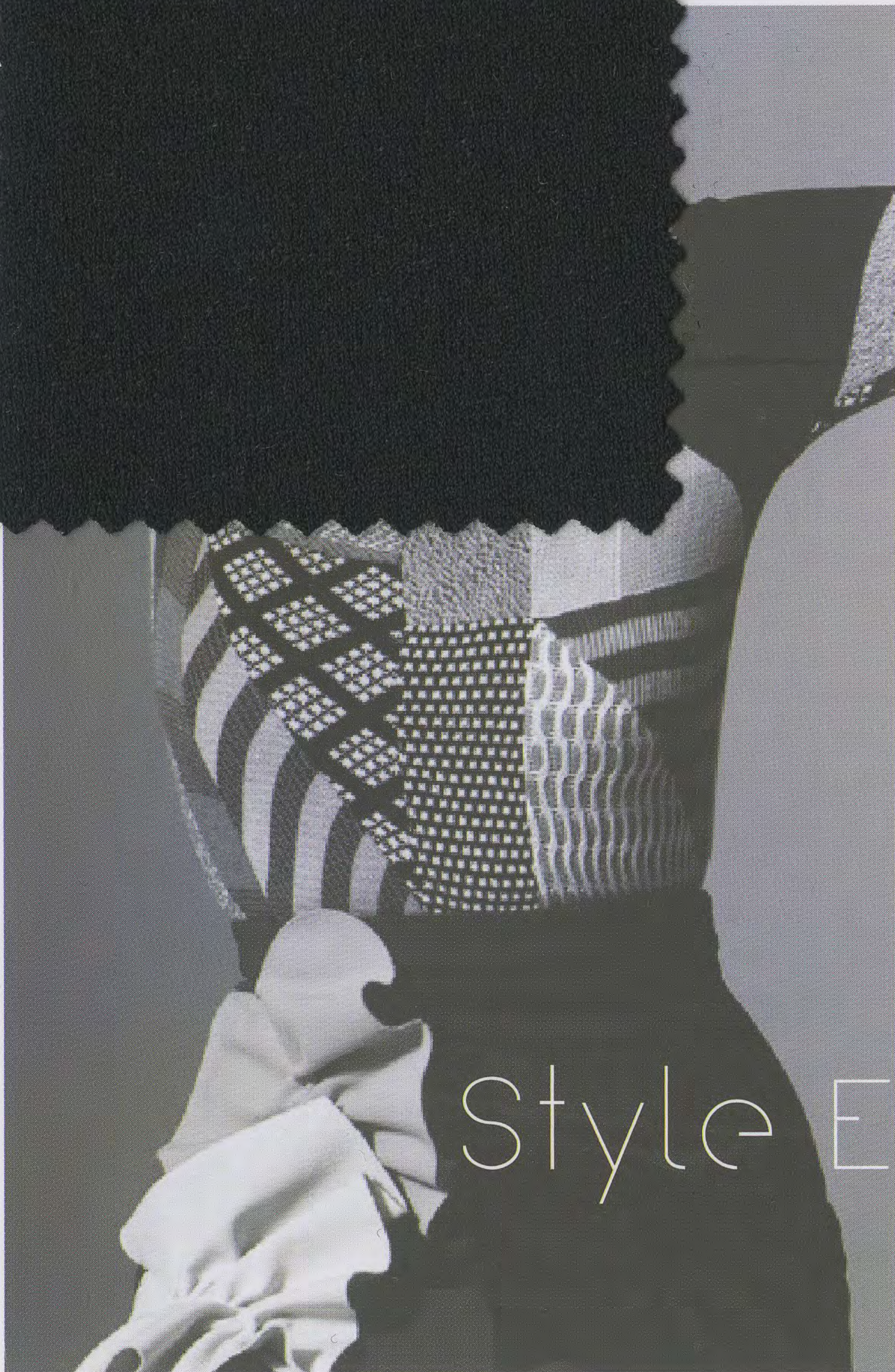
No11 : **FLEECE** FY4405 Nm 16000 100%Cotton







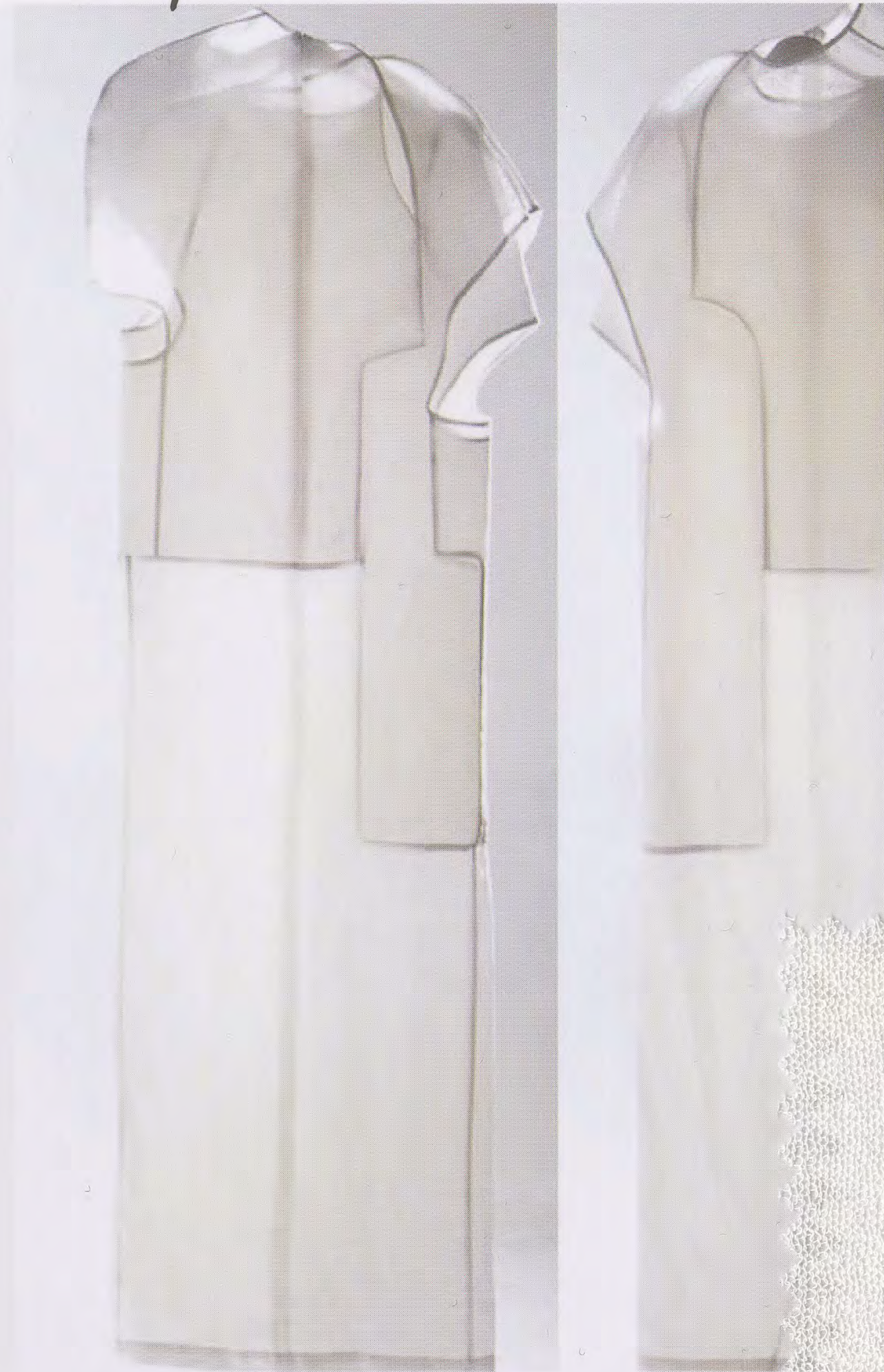
No12 : SENNA CS0489 Nm 2/90000  
88%Viscose 12%Elite



Style Evolvement



# Style Evolvement



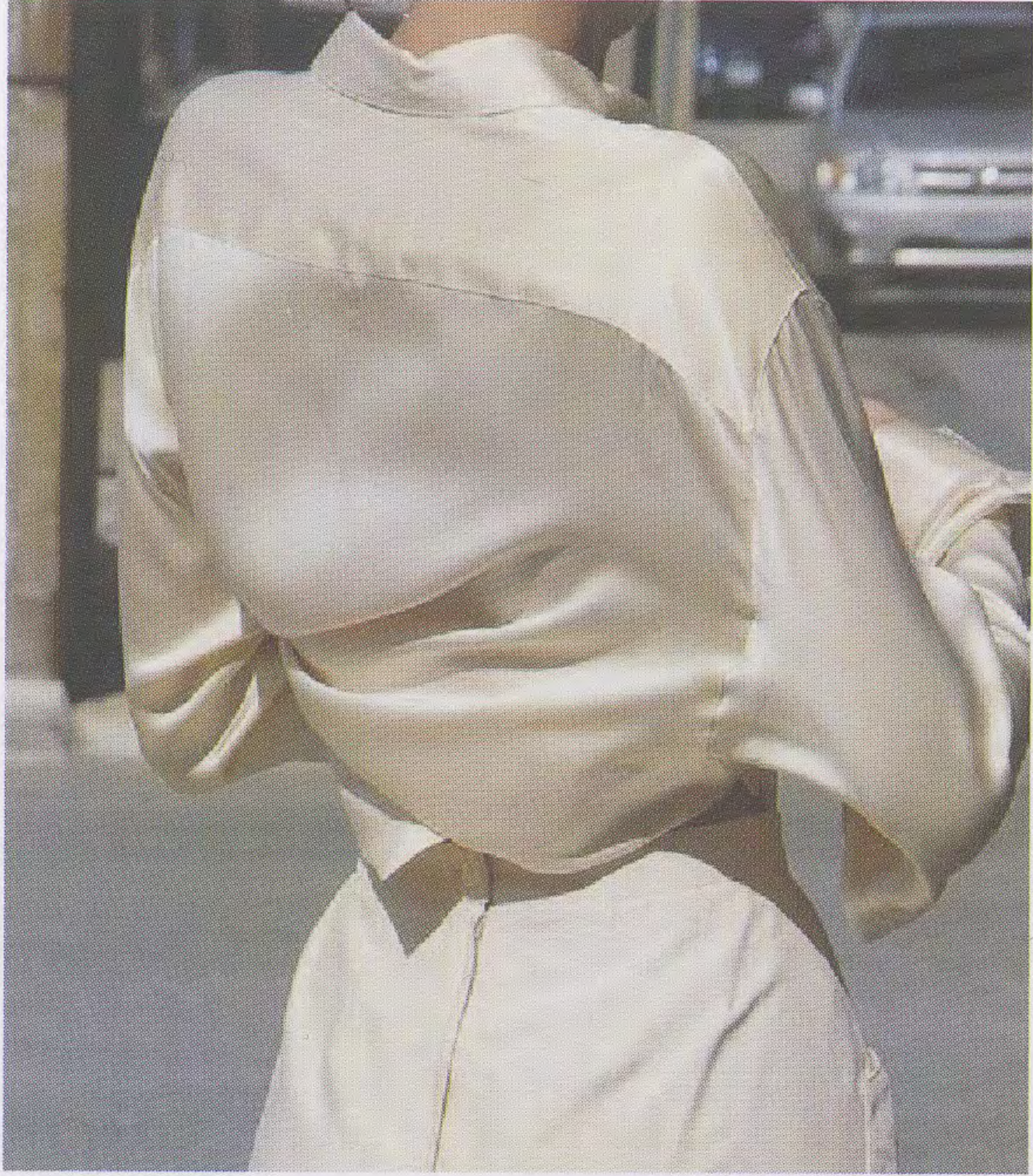
**No13 : ECO WHEAT CS1930 Nm 68000**  
85%EcoVero Viscose 15%Nylon



**No13 : ECO WHEAT CS2527 Nm 45000**  
90%EcoVero Viscose 10%Nylon



NOCTURNAL INNOVATION



No14 : MORGEN CS1377 Nm 3/75000  
100%Enka Viscose



# Fine and close



**No15: SPHENE C8945** Nm 2/75000

**SPHENE C8945-1** Nm 3/75000

**SPHENE CF0227** Nm 6000

70% Mercerized Wool 30% Silk







**No17 : AMERI FY7466 Nm 16000**  
51%Cashmere 49%Silk



# EXTRASENSORY



**No16 : KAMMI C3370 Nm 2/60000 70%Silk 30%Cashmere**





# Trailblazer

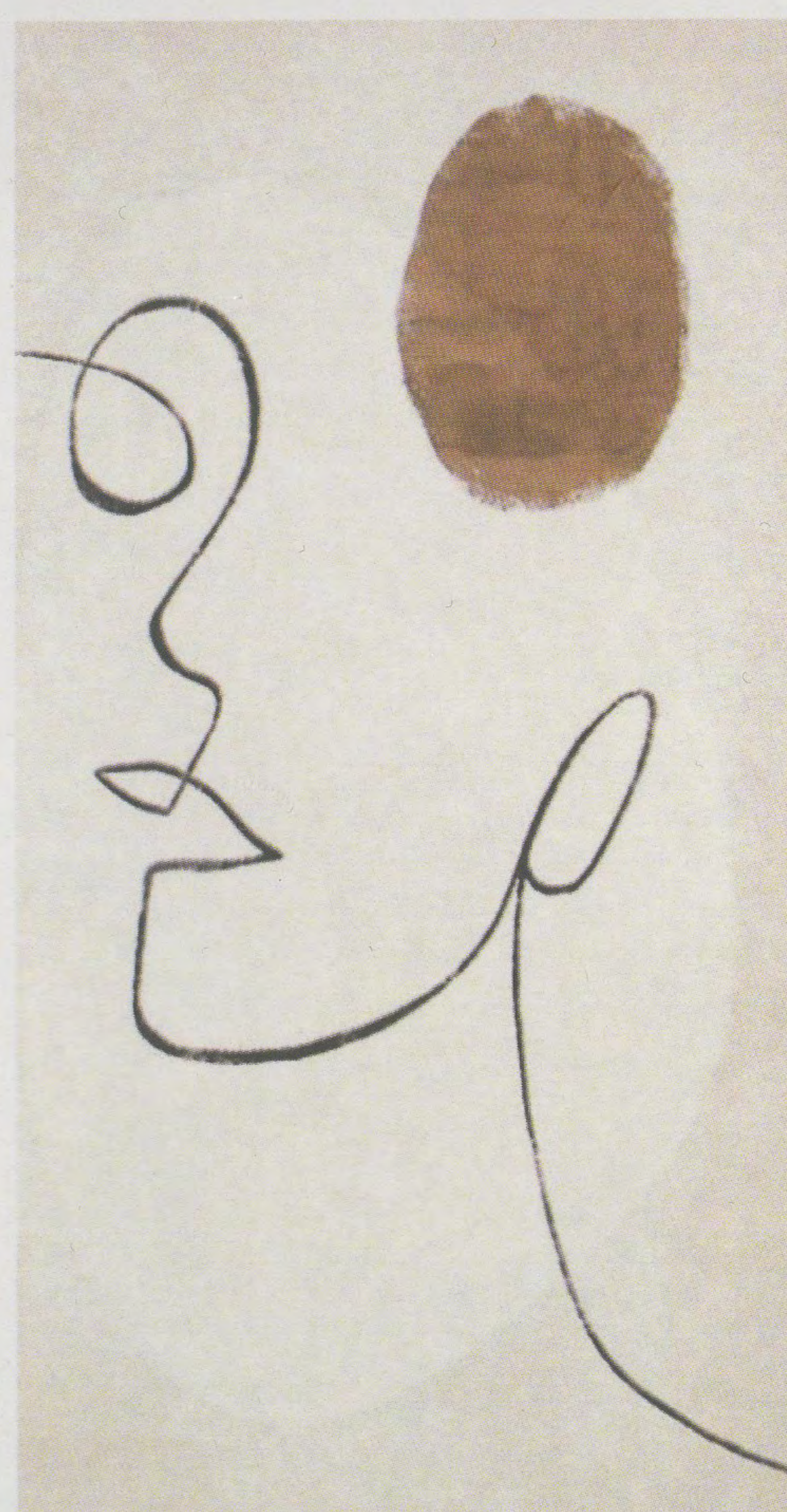
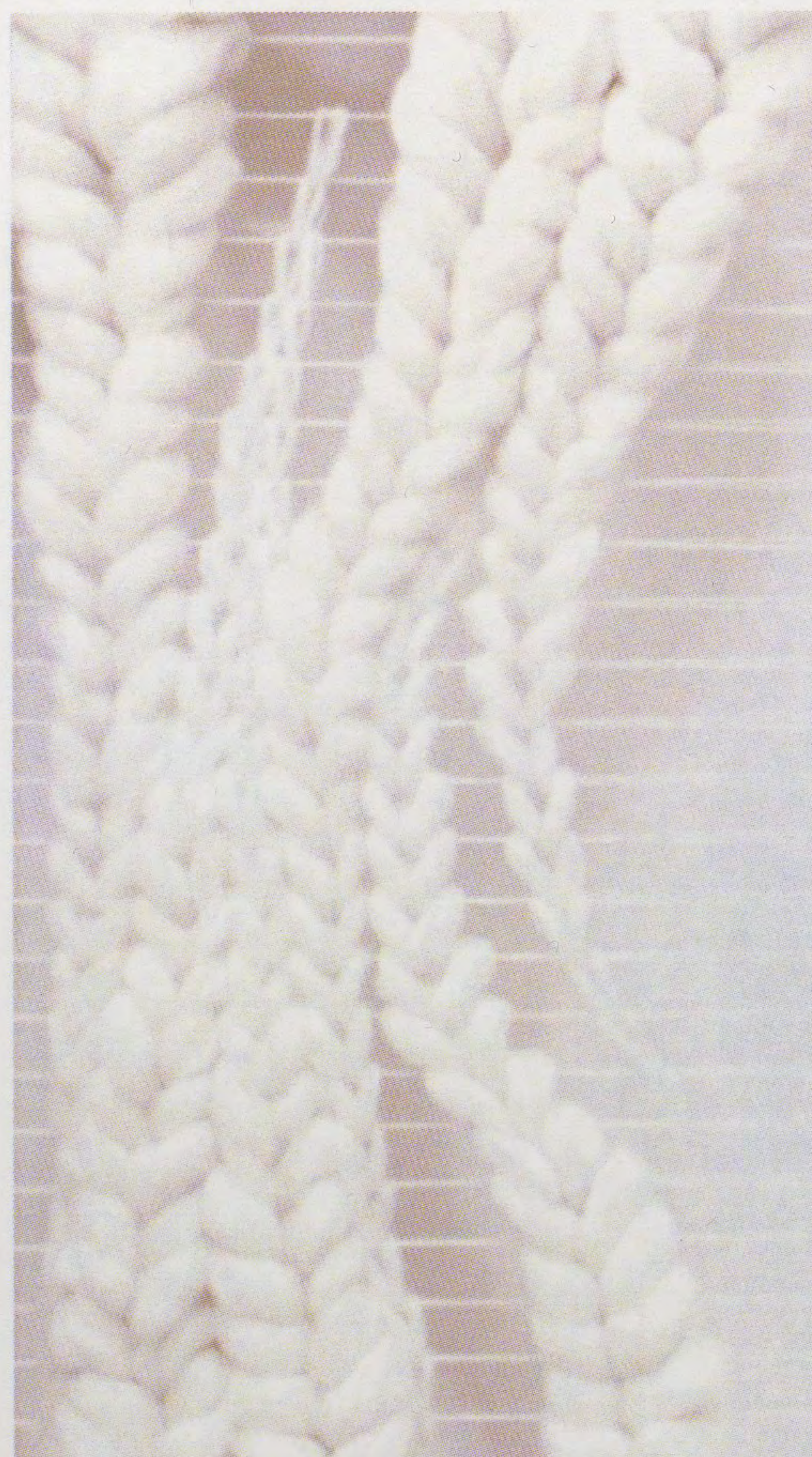


**No16 : MALTA CF0728 Nm 26000**  
61%Silk 27%Cashmere  
12%Metallised Fibre





# SCULPTURE



**No18 : SQUARE FY6005-1 Nm 900**  
53%Alpaca 47%Wool



*Spinning*

*a better future*

*is our vision and mission.*

*Our luxury collection*

*used eco-friendly materials*

*to help knit a*

*more green*

*&*

*sustainable world.*



Luxury

# Luxury

*stay easy stay unique*

vol.1

YARNS & COLORS

YARNS & COLORS