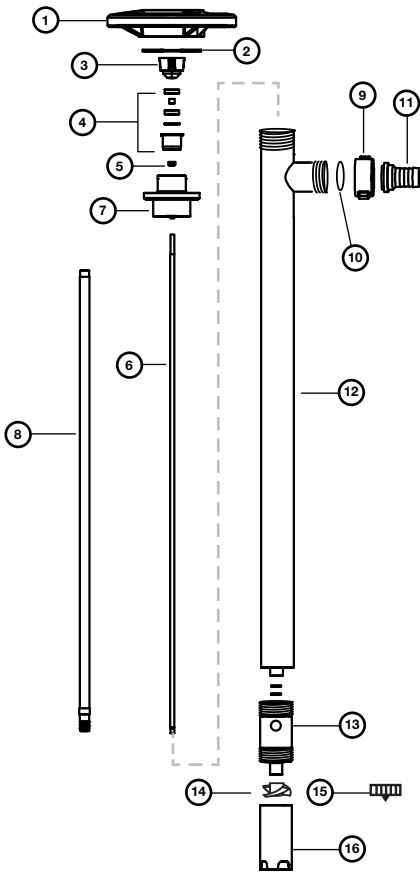


**Industrial Drum Pumps Models: SP-SS**

**SP-SS Spare Parts List**



Ref. Number	Description	P/N for SP-SS	Qty
1	Hand Wheel, Polypropylene	1842	1
2	Snap Ring, Steel	1508	1
3	Pump Coupling, Nylon	1004*	1
4	Bearing Unit Assembled – 2 each	1038*	1
	Viton® shielded bearings, spacer, snap ring, bearing can		
5	V-Seal, PTFE	4000	1
6	Drive Shaft, SS316		
	27" (700 mm)	2027	1
	39" (1000 mm)	2028	1
	47" (1200 mm)	2029	1
	60" (1500 mm)	2709	1
	72" (1800 mm)	2710	1
7	Connection Flange, SS316	8102	1
8	Guide Sleeve, PTFE		
	27" (700 mm)	2031	1
	39" (1000 mm) / 47" (1200 mm)	2032	1
	60" (1500 mm)	2711	1
	72" (1800 mm)	2712	1
9	Wing Nut, SS316	8068	1
10	Seal, PTFE	2195	1
11	Hose Barb, SS316		
	.75" (19 mm)	2197	1
	1" (25 mm)	2196	1
12	Inner/Outer Tube Assembly, SS316		
	27" (700 mm)	2700	1
	39" (1000 mm)	2701	1
	47" (1200 mm)	2702	1
	60" (1500 mm)	2713	1
	72" (1800 mm)	2714	1
13	Pump Housing with Carbon Bushing, SS316	2704*	1
14	High Volume Impeller, PTFE	2706*	
15	High Pressure Impeller, PTFE	4608 HH	1
14	O-Ring, Viton (2 per set)	2707	1
16	High Volume Pump Foot, SS316	2708	1
	High Pressure Pump Foot, SS316	2708 HH	1
17	Repair Kit (*Includes Items 1, 2, 9, 12 & 13)	9054	1



When pumping flammables or combustible liquids, this pump must be used in conjunction with an explosion proof motor.