



**Made in USA**

Ideal Cooking Products Shish Kabab Broilers unique compact all welded design offers an easy to fit product in any Mediterranean Cuisine and maximizes space to satisfy the most demanding needs and assuring optimal performance and low operating and maintenance costs. With high efficiency BTU's burners these broilers drip down the meat juices onto the radiants to ear the flames and smoke a unique flavor. Model ranging from 24" to 84" width are available. Ideal Cooking Products Counter top Line-up align perfectly with other Ideal Products on height, depth and other design alike features.

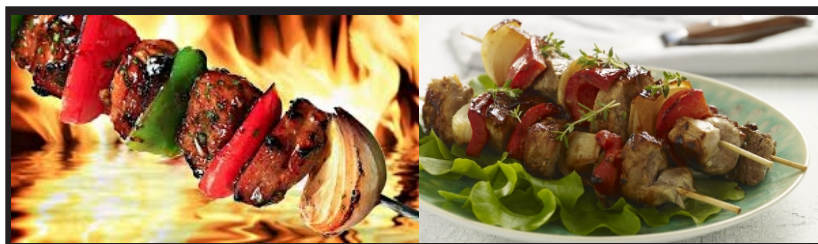
## STANDARD FEATURES

- Heavy gage stainless steel exteriors.
- 14ga. Stainless Steel Skewer Holders.
- Strong inner chassis welded all around.
- 16" Heavy duty cast iron radiant covers evenly transmits the heat to the cooking area.
- High efficient "I" Type burners, rated at 30,000 BTU's., located strategically apart.
- All burners are equipped with continuous anti-clogging stainless steel pilots for instant ignition.
- Each burner controlled manually by a heavy duty knob.
- Large capacity Stainless Steel full width removable crumb tray.
- Available in 24", 30", 36", 48", 60", 72" and 84" wide models.
- Complies with "NSF/ANSI Std. 4-2009 "Commercial, Rethermalization, and Powered Hot Food Holding and Transport Equipment"
- Conforms to ANSI STD Z83.11 Certified to CSA STD 1.8
- One year parts and labor warranty.

**Gas:** 3/4" NPT rear gas connection, specify type of gas and altitude if over 2,000 feet.

**Pressure:** 5" W.C. - Natural Gas  
10" W.C. - Propane Gas

**Note:** Install the pressure regulator supplied with the appliance at the inlet of the gas line.



Intertek

Model: IDSKB-48

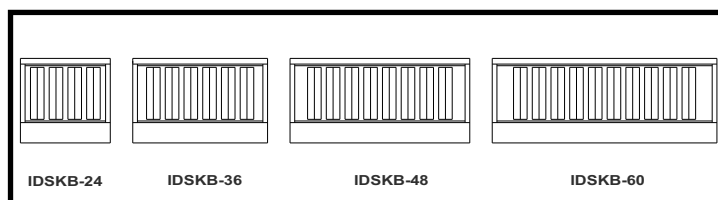


Intertek



Model: IDSKB-72  
(w/ Optional Stand)

Add \$90.00 for a Set of 4 Casters if required.



Model	Description	Length	Depth	Height	Weight	Total BTU's	List Price	Equip. Stand Price List
IDSKB-24	24" HD Shish Kabab Broiler	24"	25 1/4"	11"	275 lbs.	120,000	\$2,125.00	\$360.00
IDSKB-30	30" HD Shish Kabab Broiler	30"	25 1/4"	11"	280 lbs.	150,000	\$2,500.00	\$450.00
IDSKB-36	36" HD Shish Kabab Broiler	36"	25 1/4"	11"	335 lbs.	180,000	\$3,000.00	\$550.00
IDSKB-48	48" HD Shish Kabab Broiler	48"	25 1/4"	11"	415 lbs.	240,000	\$3,750.00	\$725.00
IDSKB-60	60" HD Shish Kabab Broiler	60"	25 1/4"	11"	470 lbs.	300,000	\$4,500.00	\$940.00
IDSKB-72	72" HD Shish Kabab Broiler	72"	25 1/4"	11"	520 lbs.	360,000	\$5,375.00	\$1,125.00
IDSKB-84	84" HD Shish Kabab Broiler	84"	25 1/4"	11"	600 lbs.	420,000	\$6,300.00	\$1,260.00