

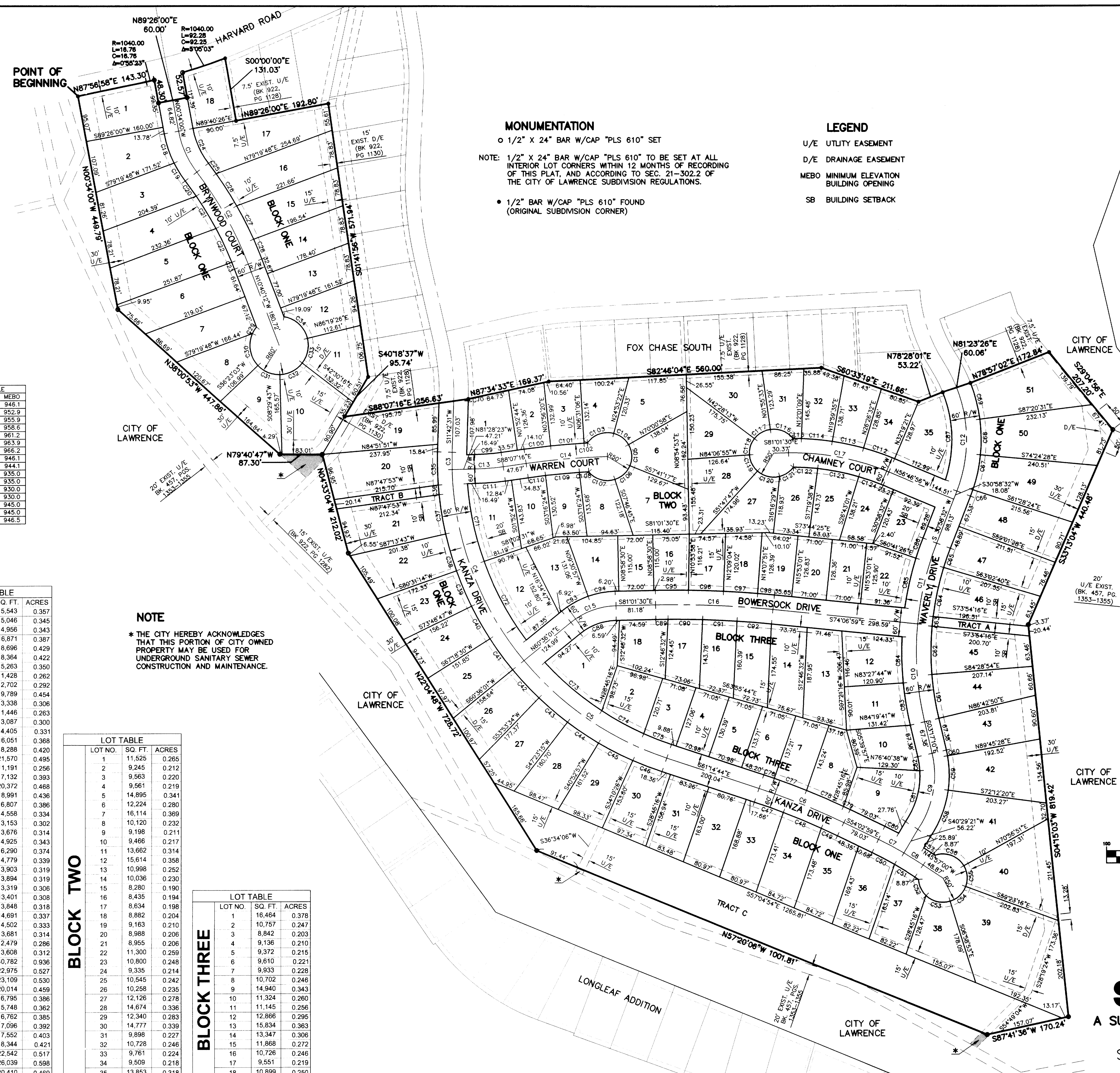
CURVE	LENGTH	RADIUS	CHORD	BEARING
C1	93.52	200.00	92.67	S13°57'45"E
C2	218.45	750.00	217.68	N19°00'51"W
C3	36.09	650.00	36.09	S10°07'04"W
C4	430.26	650.00	422.45	S10°26'11"E
C5	361.28	650.00	356.65	S45°19'21"E
C6	188.38	1500.00	188.26	N57°38'51"W
C7	59.41	750.00	59.40	N54°45'48"W
C8	46.61	750.00	46.60	N47°34'49"W
C9	165.23	200.00	160.58	N20°22'55"E
C10	204.95	630.00	204.05	S06°02'00"W
C11	171.78	630.00	171.25	S23°09'51"W
C12	221.04	300.00	216.08	N09°52'03"E
C13	58.02	900.00	57.98	S84°47'50"E
C14	187.92	1500.00	187.84	N44°54'11"W
C15	100.46	150.00	98.60	S79°47'16"W
C16	241.15	2000.00	241.00	N77°34'51"W
C17	211.56	500.00	209.98	N68°54'13"W
C18	64.05	230.00	63.84	S08°32'38"E
C19	43.50	230.00	43.44	S21°56'24"E
C20	38.75	720.00	38.75	N25°49'00"W
C21	78.35	720.00	78.31	N12°02'27"W
C22	77.25	720.00	77.22	N14°57'59"W
C23	15.37	720.00	15.37	N11°16'53"W
C24	79.49	170.00	78.77	S13°57'45"E
C25	26.66	780.00	26.66	N26°22'46"W
C26	78.71	780.00	78.67	N22°30'35"W
C27	77.47	780.00	77.44	N18°46'25"E
C28	44.36	780.00	44.35	N12°17'57"W
C29	16.19	60.00	16.14	S41°35'53"W
C30	70.67	60.00	66.65	S00°07'30"W
C31	50.15	60.00	48.70	S87°33'37"E
C32	53.41	60.00	51.66	N72°59'43"E
C33	53.59	60.00	51.82	N21°54'35"E
C34	70.16	60.00	68.23	N37°02'31"W
C35	68.86	680.00	68.93	S08°48'13"W
C36	20.03	680.00	20.02	S05°03'17"W
C37	82.87	680.00	82.82	S04°31'12"W
C38	79.61	680.00	79.57	S06°07'31"E
C39	79.61	680.00	79.56	S12°30'00"E
C40	77.20	680.00	77.16	S18°25'22"E
C41	79.61	680.00	79.57	S18°25'22"E
C42	79.61	680.00	79.56	S32°45'12"E
C43	77.20	680.00	77.16	S39°21'36"E
C44	77.20	680.00	77.16	S45°51'54"E
C45	79.62	680.00	79.57	S52°28'19"E
C46	64.32	680.00	64.29	S58°22'09"E
C47	63.12	1470.00	63.11	N00°00'35"W
C48	84.72	1470.00	84.72	N57°08'33"W
C49	36.77	1470.00	36.77	N54°45'59"W
C50	52.25	720.00	52.24	N51°58'14"W
C51	49.53	720.00	49.52	N47°55'15"W
C52	37.77	50.00	36.88	S14°27'44"E
C53	53.38	50.00	50.88	S69°41'18"E
C54	45.48	50.00	43.93	N54°01'25"E
C55	44.82	50.00	43.33	N04°56'05"E
C56	68.36	50.00	63.16	N59°54'41"W
C57	18.47	780.00	18.47	N46°37'42"W
C58	104.43	230.00	103.54	N30°48'07"E
C59	72.40	230.00	72.10	N08°46'34"E
C60	12.22	230.00	12.22	N01°55'51"W
C61	92.22	600.00	92.11	S01°36'58"W
C62	100.76	600.00	100.64	S10°19'46"W
C63	20.00	600.00	20.00	S16°05'44"W
C64	103.73	600.00	103.60	S22°30'11"W
C65	42.10	600.00	42.09	S28°57'56"W
C66	14.10	330.00	14.10	N39°45'04"E
C67	74.50	330.00	74.34	N22°33'44"E
C68	74.50	330.00	74.34	N09°07'31"E
C69	78.67	330.00	78.49	N04°01'18"W
C70	4.24	530.00	4.24	N11°28'47"E
C71	165.41	620.00	164.92	S01°53'22"E
C72	184.97	620.00	184.29	S18°04'45"E
C73	154.84	620.00	154.83	S39°19'40"E
C74	98.53	620.00	98.43	S31°22'34"E
C75	61.22	620.00	61.19	S58°25'01"E
C76	22.77	1530.00	22.77	N60°49'09"W
C77	71.03	1530.00	71.03	N59°03'45"W
C78	82.90	1530.00	82.88	N56°10'50"W
C79	15.45	1530.00	15.45	N54°20'20"W
C80	31.78	780.00	31.78	N52°52'16"W
C81	111.76	170.00	109.76	N25°31'05"E
C82	29.58	170.00	29.55	N01°41'57"E
C83	88.56	660.00	88.50	S00°33'29"W
C84	96.41	660.00	96.32	S08°35'12"W
C85	105.38	660.00	105.26	S22°33'21"W
C86	44.30	660.00	44.29	S28°03'10"W
C87	187.19	270.00	183.46	N08°19'45"E
C88	80.37	120.00	78.88	S79°47'16"W
C89	25.12	1970.00	25.12	N80°39'35"W
C90	71.15	1970.00	71.15	N79°15'35"W
C91	70.43	1970.00	70.43	N77°12'03"W
C92	70.83	1970.00	70.83	N75°08'47"W
C93	62.47	180.00	62.15	S73°32'52"W
C94	98.81	180.00	98.58	S89°34'34"E
C95	68.18	2030.00	68.18	N80°03'46"W
C96	71.95	2030.00	71.95	N78°05'06"W
C97	70.10	2030.00	70.09	N76°04'50"W
C98	34.53	2030.00	34.53	N74°36'14"W
C99	54.54	470.00	54.51	S84°47'50"E
C100	55.01	1530.00	55.01	N87°05'28"W
C101	68.88	1530.00	68.87	N84°46'17"W
C102	6.99	1530.00	6.99	N83°21'03"W
C103	61.61	50.00	57.79	S79°42'09"W
C104	39.58	50.00	38.56	N42°19'02"W
C105	45.65	50.00	44.08	N06°31'02"E
C106	43.33	50.00	41.99	N53°30'01"E
C107	59.63	50.00	56.15	S83°30'28"E
C108	19.16	1470.00	19.16	N83°37'26"W
C109	70.03	1470.00	70.02	N85°21'43"W
C110	35.78	1470.00	35.78	N87°25'26"W
C111	61.50	530.00	61.46	S84°47'50"E
C112	67.68	530.00	67.63	N80°26'25"W
C113	63.95	530.00	63.91	N87°32'47"W
C114	63.77	530.00	63.73	N74°40'29"W
C115	17.16	530.00	17.16	N79°02'56"W
C116	52.63	50.00	50.23	N57°55'16"W
C117	38.74	50.00	37.78	S69°43'40"W
C118	36.34	50.00	35.55	S26°42'26"W
C119	38.47	50.00	37.53	S16°09'54"E
C120	48.73	50.00	46.82	S86°17'22"E
C121	34.88	50.00	34.18	N65°58'16"E
C122	50.01	470.00	49.99	N76°48'40"W
C123	85.91	470.00	85.79	N68°31'34"W
C124	53.38	470.00	53.35	N60°02'09"W

BLOCK	LOT NO.	MEBO
ONE	10	946.1
ONE	11	952.9
ONE	12	955.9
ONE	13	956.6
ONE	14	961.2
ONE	15	963.9
ONE	16	966.2
ONE	19	946.1
ONE	20	944.1
ONE	30	935.0
ONE	31	935.0
ONE	39	930.0
ONE	40	930.0
ONE	47	945.0
ONE	48	945.0
ONE	50	946.5

LOT NO.	SQ. FT.	ACRES
1	15,543	0.357
2	15,046	0.345
3	14,956	0.343
4	16,871	0.387
5	16,896	0.429
6	18,364	0.422
7	15,263	0.350
8	11,428	0.262
9	12,702	0.292
10	19,789	0.454
11	13,338	0.306
12	11,448	0.263
13	13,087	0.300
14	14,405	0.331
15	16,051	0.368
16	18,288	0.420
17	21,570	0.495
18	11,191	0.256
19	17,132	0.393
20	20,372	0.468
21	18,991	0.436
22	16,807	0.386
23	14,558	0.334
24	13,153	0.302
25	13,676	0.314
26	14,925	0.343
27	16,290	0.374
28	14,779	0.339
29	13,903	0.319
30	13,894	0.319
31	13,319	0.306
32	13,401	0.308
33	13,848	0.318
34	14,691	0.337
35	14,502	0.333
36	13,681	0.314
37	12,479	0.286
38	13,608	0.312
39	40,782	0.936
40	22,975	0.527
41	23,109	0.530
42	20,014	0.459
43	16,795	0.386
44	15,748	0.362
45	16,762	0.385
46	17,096	0.392
47	17,552	0.403
48	18,344	0.421
49	22,542	0.517
50	26,038	0.598
51	20,410	0.469

LOT NO.	SQ. FT.	ACRES
1	11,525	0.265
2	9,245	0.212
3	9,563	0.220
4	9,561	0.219
5	14,895	0.341
6	12,224	0.280
7	16,114	0.369
8	10,120	0.232
9	9,198	0.211
10	9,466	0.217
11	13,662	0.314
12	15,614	0.358
13	10,998	0.252
14	10,036	0.230
15	8,280	0.190
16	8,435	0.194
17	8,634	0.198
18	8,882	0.204
19	9,163	0.210
20	9,988	0.228
21	8,955	0.206
22	11,300	0.259
23	10,800	0.248
24	9,335	0.214
25	10,545	0.242
26	10,298	0.235
27	12,126	0.278
28	14,674	0.336
29	12,340	0.283
30	14,777	0.339
31	9,898	0.227
32	10,728	0.246
33	9,761	0.224
34	9,509	0.218
35	13,853	0.318

LOT NO.	SQ. FT.	ACRES
1	16,464	0.378
2	10,757	0.247
3	8,842	0.203
4	9,136	0.210
5	9,372	0.215
6	9,610	0.221
7	9,933	0.228
8	10,702	0.246
9	14,940	0.343
10	11,324	0.260
11	11,145	0.256
12	12,866	0.295
13	15,834	0.363
14	13,347	0.306
15	11,868	0.272
16	10,726	0.246
17	9,551	0.219
18	10,899	0.250



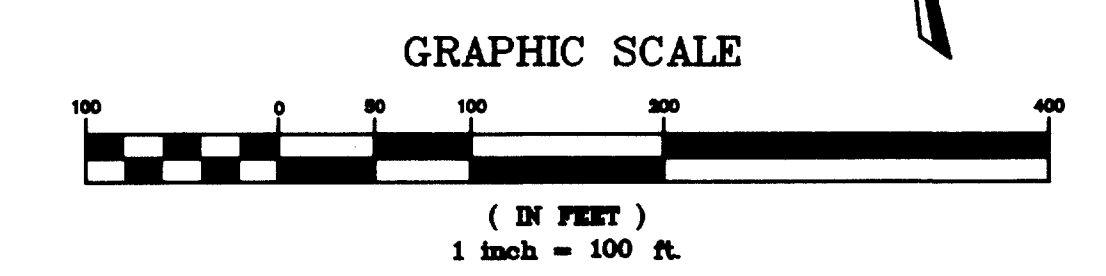
**MONUMENTATION**

o 1/2" x 24" BAR W/CAP "PLS 610" SET  
 NOTE: 1/2" x 24" BAR W/CAP "PLS 610" TO BE SET AT ALL INTERIOR LOT CORNERS WITHIN 12 MONTHS OF RECORDING OF THIS PLAT, AND ACCORDING TO SEC. 21-302.2 OF THE CITY OF LAWRENCE SUBDIVISION REGULATIONS.  
 • 1/2" BAR W/CAP "PLS 610" FOUND (ORIGINAL SUBDIVISION CORNER)

**LEGEND**

U/E UTILITY EASEMENT  
 D/E DRAINAGE EASEMENT  
 MEBO MINIMUM ELEVATION BUILDING OPENING  
 SB BUILDING SETBACK

**NOTE**  
 \* THE CITY HEREBY ACKNOWLEDGES THAT THIS PORTION OF CITY OWNED PROPERTY MAY BE USED FOR UNDERGROUND SANITARY SEWER CONSTRUCTION AND MAINTENANCE.



**A FINAL PLAT OF FOX CHASE SOUTH NO. 3**  
 A SUBDIVISION IN THE CITY OF LAWRENCE, DOUGLAS COUNTY, KANSAS  
 SE 1/4, SEC. 32-T12S-R19E