

The Herald

Inside this Issue

102 Apple Street • Leesport, PA 19533 • 610-926-7176 • www.lcht.org

Worship & Music	2
Notes About Our Folks	2
November Calendar	3
Volunteers	4
Gift Card Program	4
Rocking Horse Preschool	5
Angel Tree	5
Boy Scouts	6
Youth Group	6
LCHT Movie Night	6
Chicken Pot Pie Dinner	6
LCHT Ministries	6
WELCA	7
Celebrations	7
LCHT News	8
LCHT News	9
Around the Community	10
ELCA	11

A Word from Pastor Ritter

Dear Sisters and Brothers in Christ,

As your transitional pastor, I serve to fill the pastoral leadership and care responsibilities of a regularly called pastor, but I also am here to assist the congregation and its leadership in the process of preparing for and the calling of its next pastor. For the Lutheran Church of the Holy Trinity this latter work means that we need to find a path forward from the unsustainable deficit spending that has developed over the last several years, renew the educational ministry of the congregation, attract and welcome new members (especially young families), and be open to doing church differently. I want you to know that work is under way in all of these areas.

First, during the month of November as our thoughts turn naturally to giving thanks, we will focus on our stewardship of God’s many blessings, as a congregation and as individuals. On Sunday, November 19, we will celebrate Consecration Sunday. Ms. Dawn Baxter, a member of Allegheny Lutheran Church, will be our guest preacher that morning at worship and will help us make connections between our giving and our faith. The 9 am service will conclude with a time of commitment during which everyone who is present will be asked to fill out an estimate of giving card for 2018 and bring it forward as an act of worshipful thanksgiving for all that God has done for us. The service will be followed by a brunch for which you will be asked to make a reservation, so expect a phone call or an opportunity to sign up for this when you attend worship over the next couple of weeks. I urge each of you to make every effort to be present on the 19th and to prayerfully consider growing in your financial support of LCHT.

Second, the renewal of LCHT’s educational ministry has been a stubborn challenge. While individuals have stepped forward to provide leadership for this ministry the recovery of students has not occurred. Currently there is a fledgling group of adults who meet with the pastor on Thursday evenings from 6-7 pm, one student participated in first communion in-

struction, and there are currently 2 students participating in confirmation classes. I am very concerned about this lack of desire to learn about our faith and how it impacts our daily lives. I continue to look at what can be done to renew this vital ministry of the church. Your input will be most appreciated!

Third, our new secretary, Amanda Schwendeman, has been a real asset in the effort to attract new members. She, along with Diana Biehl, has worked to refurbish LCHT’s online presence, advertise the congregation’s activities and events and generally think about ways to let others know LCHT is present in the community and eager to welcome new faces and ideas. We have also changed the bulletin format for worship to make it more user and visitor friendly. Reversing a decade old trend of membership and worship attendance decline will take time and your participation. What do I mean by your participation? You are needed to invite others to come to worship with you and to share in the other ministries of LCHT. You are the vital ambassadors of the congregation and when new faces show up it will be important for you to welcome them and help them feel at home.

Finally, to put it simply, LCHT cannot afford to continue to do church the way it has been doing church or it will continue to move toward its demise. I do not have a clear answer for what this might mean, but at the very least it will mean that you and I will need to be open to new ideas and new ways of being the church in the Leesport and Ontelaunee communities, and it will mean that you and I will have to find a new openness to change.

We have a lot of work ahead of us. I know that with God’s grace and guidance and your commitment and energy we will find a path forward that will lead to the renewal of the congregation and the strengthening of its ministries for the community and the world!

Yours in Christ,
Pastor Ritter



WORSHIP AND MUSIC NOTES

Submitted by Renee Lenning, Chairperson

Worship and Music Committee will meet on Thursday, November 2 @ 6:00 p.m.

Worship services for the month of November have been planned as follows:

November 5 – All Saints Sunday – Holy Communion; remembrance of members who have died during the year. In addition, congregation will be invited forward to light a candle in memory of loved ones.

November 12 – 23rd Sunday after Pentecost. Veterans Day observance with litany and “missing member” table set up.

November 19 – 24th Sunday after Pentecost. Holy Communion, consecration Sunday, Thankoffering with appropriate litany. Second offering to take place for WELCA.

November 26. Christ the King Sunday. Bell choir will play.

Worship Attendance



9/24	44
10/1	59
10/8	42
10/15	49
10/22	46

Times for December 24th services were discussed. Sunday morning worship will take place as usual with Christmas Eve service times being 6:30 p.m. and 9:00 p.m. Candle lighting and Holy Communion will take place at both evening services.

NOTES ABOUT OUR FOLKS

PRAYERS:

- * Warren Seip and Renee Lenning on Ruth's death.
- * Jim & Audrey DeLong, who are at home.
- * Jerry Leutze, who is at the Massonic Home, Elizabethtown.
- * Ralph & Delores Seaman, on their recent move.
- * Deanna Miller, who is at Berks Heim.
- * Donna and Ron Kessler on the death of his mother.
- * To all our shut-in members and all those who are on our prayer list.
- * To all our servicemen and servicewomen at home & abroad.

THANKS TO:

- * Sue Biehl for taking care of our flower beds.
- * Our mowers, Ken Frankhouser, Scott Care and Dan DeAntonio.
- * Ron & Judy Corl and all our other volunteers who help with the SV Food Pantry.
- * Everyone who helped with our Fall Fest.
- * Everyone who has, and continues to, support the Gift Card program.
- * Those who save soup labels.
- * Those who save Redner's tapes. (*Remember to use your save-a-tape card.*)
- * To all the leaders of our church, the nation and the world.



November 2017



Sunday	Monday	Tuesday	Wednesday	Thursday	Friday	Saturday
29	30	31	1	2 6:00 PM Worship & Music 7:00 PM Choir Rehearsal	3 7:00 PM Youth Group	4 8:00 AM Cub Scout Sandwich Sale 6:30 PM LCHT Movie Night
5 <i>Daylight Savings Ends</i> <i>All Saint's Sunday</i> 9:00 AM Worship/ Holy Communion	6 1:00 PM WELCA 7:00 PM Bell Choir Rehearsal	7	8 7:00 PM Council meets	9 6:15 PM Bible Study 7:00 PM Choir Rehearsal	10 Chicken Pot Pie Dinner prep	11 Veterans Day 9:00 AM Chicken Pot Pie Dinner prep 4:00-7:00 PM Chicken Pot Pie Dinner
12 <i>23rd Sunday after Pentecost</i> 9:00 AM Worship 1:00-4:00 Soccer Party 4:30 PM Troop 160 PLC meeting 6:00 PM Troop meeting	13 7:00 PM Bell Choir Rehearsal	14 6:00 PM Girl Scouts	15 7:00 PM Troop 160 Roundtable meeting NEWSLETTER DEADLINE	16 6:00 PM Bible Study 7:00 PM Choir Rehearsal	17 2:00 PM Food Pantry Delivery	18 9:00 AM Food Pantry Distribution
19 <i>24th Sunday after Pentecost</i> 9:00 AM Worship/ Holy Communion/ Consecration Sunday 2:00 PM Prayer Shawl Ministry 6:00 PM Troop 160 Thanksgiving Dinner	20 7:00 PM Bell Choir Rehearsal	21 9:00 AM RHP Thanks-giving Feast	22	23 Thanksgiving Day	24	25
26 <i>Christ the King Sunday</i> 9:00 AM Worship	27 7:00 PM Bell Choir Rehearsal	28 6:00 PM Girl Scouts	29	30 7:00 PM Choir Rehearsal	1 7:00 PM Youth Group	2

➡ For up to date calendar information, visit our website, www.lcht.org and click on the on Calendar tab ⬅

NOVEMBER VOLUNTEERS

Altar Flowers

5 - Linda Roshong
12 - Vicki Fetterman
19 - Charles & Rosemary Mowery
26 - Women of the ELCA

Bulletins

5 - available
12 - available
19 - Charles & Rosemary Mowery
26 - Vicki Fetterman

See bulletin board
to sign up to sponsor the weekly
bulletins, and the altar flowers.

Nursery

no attendant but room will be open

Acolytes

5 - Makayla Lowery
12 - Evan Lash
19 - Mason Clery
26 - Makayla Lowery

Greeter:

Phyllis Weaver

Ushers

5 - DeAntonio, Biehl, Lenning
12 - Lowery, Corl, Davidheiser
19 - DeAntonio, Biehl, Lenning
26 - Lowery, Corl, Davidheiser

Assisting Ministers: Every Sunday during worship, the Lessons for the day are read aloud. If you are interested in reading the Lessons or helping with Holy Communion, please contact Renee Lenning.

Nursery: If anyone is interested in helping in the nursery on a Sunday morning, please contact the Pastor or the church office.

Bread: The Altar Guild prepares for Communion about one hour ahead of the scheduled worship time and would like to have the

bread by 8:30 a.m. If you are interested in providing communion bread, please see Phyllis Heffner.

To All Acolytes and Crucifers: If you are unable to serve when you are scheduled, it is your responsibility to make arrangements to switch your day with another person, and notify the church office by Wednesday of that week.

Bulletins and Altar Flowers: We thank everyone who signs up to sponsor bulletins and Altar flowers.

If you would like to sponsor the weekly bulletin (\$15) or Altar flowers (\$25), please sign up at the bulletin board (please PRINT), call or email the office at lchtsecretary@comcast.net. Payment can be mailed in or given to Pat Miller. When paying, please specify somewhere on your envelope the amount, date you are paying for, and note if it is for flowers and/or bulletins. Payment envelopes are available in the pews.

**DEADLINE FOR
NEWSLETTER ARTICLES**

**Deadline for submissions for the
December Newsletter will be
Sunday, November 15.**

**DEADLINE FOR
NEWSLETTER ARTICLES**

GIFT CARD PROGRAM QUESTIONS

- WHY BUY A GIFT CARD FROM THE CHURCH?** Our church will receive a 5% rebate with each gift card you purchase. The proceeds from the sales of these gift cards goes towards the capital improvement fund.
- DOES THE GIFT CARDS COST ME ADDITIONAL MONEY?** No! If you buy a \$50 gift card, it is worth \$50. The proceeds the church gets is from the Store, not from you!
- MY STORE OFFERS FUEL PERKS. WILL I STILL GET THEM IF I USE A GIFT CARD FOR MY PURCHASE?** Absolutely! The gift card is just a way for you to pay for your purchase, you will still get all your store's perks.
- WHAT STORES CAN I GET GIFT CARDS TO?** Redner's, Giant or Weis. The Redner's gift cards may be used at any Redner's (including the pharmacy) or Redner's Quick Shoppes. Cards may be used to purchase gas; you would have to pre-pay with the card. Giant cards also may be used at any Giant store and at its gas pumps. Giant cards will not be accepted at the pharmacy. Weis cards also may be used at the following stores: Cressler's, King's, Mr. Z's or Scot's Lo Cost.
- WHAT AMOUNTS CAN I BUY THE GIFT CARDS FOR?** Cards in amounts of \$25, \$50, \$100 are available and can be paid for with cash or checks made payable to The Lutheran Church of the Holy Trinity.
- REMEMBER** with the gift cards from Redner's and Giant you can buy other gift cards like Sears, Olive Garden & etc.
- WHAT IF I STILL HAVE QUESTIONS?** Please see Phyllis Heffner, Sally Miller or see back of card for details.



ROCKING HORSE PRESCHOOL

Submitted by Mrs. Woods and Mrs. Lesher

Wow! Can you believe that we are entering the month of November!! This year is off to a great start and we have been having lots of fun here at school, between field trips, pj and movie day, and our Halloween parties we have been having a blast!

A big "thank you" to everyone who purchased a Kid Stuff coupon book! We raised **\$500** towards classroom supplies!

Every year we like to pick an organization that we can "give back" to. This year we will again be participating in the Angel Tree program by the Salvation Army of Hamburg. We will have a wreath hanging outside the classroom where you can sign up to purchase gifts for a child in need. Stay tuned for more info.

Thank you for all your continued support and prayers! We appreciate all the donations we have received as well!



TEACHER **Wish** LIST

Fine Point Washable Markers

Wipes

White Icing (in containers or tubes)

Sprinkles (for cookie decorating)

Oatmeal

LOOKING FOR "ANGELS"

Submitted by the Social Ministry Committee



Be watching for the Salvation Army Angel Tree names to arrive around November 5. Please select a tag from the arbor in the foyer. We have tags for 20 children and 10 adults to select from. We thank Rocking Horse Preschool again this year for helping us with this project.

After selecting your name please locate the numbers and letters on your tag. Then find those numbers on the sheet of paper with all the numbers and sign your name to the right of the numbers. This will be the same as last year. We were able to keep track of who had which names and it was a BIG HELP.

After purchasing your gift, please attach the name

tag to the gift. All gifts are to be returned to the church by Sunday, December 3. Please place all UNWRAPPED gifts by the arbor.

If for some reason you pick a name & are unable to bring in a gift, please return the name tag to Sally Miller or Phyllis Heffner so your name will not go without a gift. These gifts will go to someone in our local area as the names are coming from the Salvation Army Hamburg Chapter.

Thank you for your continued support of The Salvation Army Christmas Tree Angel program. It is through your generosity and kindness that Christmas will be special for those in need in our local community.





It is never too early or late to join us and have a ton of fun! Day Camps/Camping, Community Events, Earning Badges, Pinewood Derby, Cub mobile Races, Holiday Parties, Adventures/Trips and so much more! For more information, call Cubmaster Jason Witters at 484-671-2471 for Cub Scouts (Kindergarten—5th grade; ages 5-11) or Assistant Scoutmaster Karen Bausch for Boy Scouts (6th —12th grade).

CALLING ALL YOUTH GRADES 1 TO 8

Come on out for our next youth group meeting on Friday, November 3rd from 7:00 p.m. to 8:30 p.m. downstairs in the fellowship area. We will have a time for games, snacks and fun. Plan to come out and bring a friend. We would love to see you. If you have questions, email Mike or Lori Lowery at mllowery@comcast.net. Thanks! Hope to see you there! Our next gathering is scheduled for December, 1 at the same time and place.



SATURDAY, NOVEMBER 4
6:30 p.m.



This months feature is “Megan Leavey”. Don’t miss this true story about a marine and her dog. Folding chairs are provided, but feel free to bring cozy blankets or your own chair. Snacks and drinks are encouraged as well.

CHICKEN POT PIE DINNER

Saturday, November 11 from 4:00 p.m. to 7:00 p.m. Eat in or take out. \$10 for adults, \$5 for Veterans and children. Quarts of pot pie will also be available for \$7. Dinners include pot pie, corn, pepper cabbage, dessert and a beverage. For tickets call Dennis Biehl @ 484-256-6678.



New Members Wanted and Welcomed!

If you or anyone you know is looking for a church home, let Pr. Ritter know. He will be happy to meet with them and to share the ministries of the people of God at LCHT. New members will be received into membership at times appropriate for them. You can contact Pr. Ritter at dsritter@ptd.net or 484-529-7801.

LCHT MINISTRIES INFORMATION

FOOD PANTRY:

Our church is the distribution site for the Schuylkill Valley Food Pantry. It is a monthly distribution done on the third Saturday of each month, from 9 to 11 a.m. There is an income guideline and a registration form to fill out, giving us your name and address as well as the number of family members in your household. Also, there are brochures and information available on heating assistance, ways to conserve energy and general concerns of limited income families. Please contact the church for further information.

2018 MISSION TRIP:

If you are interested in going on next year’s mission trip or in supporting it, please see Dan DeAntonio.

PRAYER SHAWL MINISTRY:

The prayer shawl ministry group meets the third Sunday of the month from 2 to 4 p.m. Some of the projects that we are currently knitting and crocheting are prayer shawls to give out for various reasons, baby blankets for Baptisms at our church and for babies at Mary’s Shelter, and scarves and wash clothes for Opportunity House, The Children’s Home of Reading, and Mary’s Shelter. Ideas for new projects are always welcome. You do not have to come to the monthly get-togethers, you can work on projects anywhere. Anyone who has any questions or suggestions, call Carolyn Heffner at 610-926-9662 or 484-332-0783.

WOMEN OF THE ELCA

MONTHLY MEETING

Join us on Tuesday, November 6 at 1:00 p.m. for our monthly meeting.

REDNER'S REGISTER TAPES

Submitted by Janet Kleffel

Did you know that Redner's Warehouse Markets gives 1% of purchases back to the Women of the ELCA? This one percent can really add up! And the monies goes to good things like the Mission Trip, VFW, Berk's Women in Crisis, just to name a few.

How does Redner's calculate the one percent? Glad you asked. Well, we depend on church members to drop off their Redner's receipts. However, its not quite that simple.

In order for Redner's to count the receipt (a.k.a. - register tape), it has to be the ENTIRE receipt, and it has to have a "save-a-tape" number on it. How do you insure this? Well, you must use your pump perks card or save-a-tape card at the checkout. Then, just drop the

ENTIRE receipt in the box at the ushers station in the narthex. DO NOT cut the bottom off. We only get credit for COMPLETE tapes! Also, please be sure to turn your tapes in in a timely manner, as Redner's will not accept any over three years old.

Your help is so appreciated. If you have any questions, please see Janet Kleffel.

LABELS TO SAVE

The Women of the ELCA continue to save **THE BARCODES** from Pepperidge Farms, Franco-American and Swanson products. The bar codes are sent to Solheim Lutheran Home in Los Angeles in support of the Navajo Lutheran Mission and School in Rock Point, AZ, where they are used to purchase vans and school supplies at the mission.

We are just one of 525 congregations participating in this worthwhile project. Keep on saving the bar codes and place them at the usher's station or give them to Darlene Savage.



NOVEMBER CELEBRATIONS

Birthdays of the Month

Birthdays:

- 06 - Irvin Kauffman
Amanda Schwendeman
- 07 - Alue Billig
Rev. Edgar Reed
- 08 - Betty Strause
Mary Billig
Rosemary Mowery
- 10 - Ronald Kessler
- 11 - Joshua Buchalter
Everett Graeff
- 13 - Brendan Lenning
Kaitlyn Kuhns

- 17 - Ronald Davidheiser
- 18 - Renee Lenning
Sarah Yeager
Melissa Strause
- 19 - Amy Manwiller
- 21 - Debra Yeager
- 24 - Helen Stoudt
- 25 - Thomas Heffner
- 26 - Mason Clery
- 29 - Donna Kessler
Wyatt Reeser
- 30 - Patricia Miller
John Michaels
Gail Putt

Happy Anniversary

Anniversaries:

- 02 - Barry and Anna Mae Beitler
- 03 - Eldon and Patricia Kibler
- 15 - Frank and Wendy Snyder
- 20 - Cory and Angela Hohenadel
- 23 - Jeffrey and Vicki Fetterman

If you do not see your Birthday or Anniversary listed, it means the office is missing this information. Please write your information down, drop it by the office, or email it to: lchtsecretary@comcast.net. Thank you.

LCHT NEWS



Charitable Annuities Another Expression of Christian Stewardship

If you would like to increase your current income and also make a gift to LCHT or another significant charity in your life, then a charitable annuity might be what you are looking for. If you are 65 or older, the return from a charitable annuity can substantially improve your current income and provide a charitable deduction for your taxes. The chart is representative of current rates.

The rates are fixed when the annuity is created and continue for your life and/or your spouse's life, if a joint annuity. After your death, if single life annuity or after your death and your spouse's death, if a joint and survivor annuity, the remainder of the annuity goes to the charity to which it was designated at its creation.

Current Age	Single Life	Current Age (younger)	Current Age (older)	Two Lives – Joint & Survivor
65	4.7%	65	66-68	4.3%
70	5.1%	70	72-74	4.7%
75	5.8%	75	76-77	5.1%
80	6.8%	80	83-84	6.0%

For more information contact a financial advisor or Pastor Ritter.



Veterans Day Service Sunday, November 12



We will be honoring those members who so graciously served our country on November 12th. If you served in the Military please provide your name and the branch of service in which you served to the office by Monday, November 6th.





Consecration Sunday Is Coming

Congregations that approach financial stewardship from a biblical perspective do not view the money Christians give to their church merely as a way to pay its bills. Rather, such congregations see financial contributions as a way to help people grow spiritually in their relationship with God by supporting their church's mission and ministry with a percentage of their incomes.

Our congregation's stewardship committee has selected the *New Consecration Sunday Stewardship Process* as a way to teach the biblical and spiritual principles of generous giving in our stewardship education emphasis this year.

New Consecration Sunday is based on the biblical philosophy of the need of the giver to give for his or her own spiritual development, rather than on the need of the church to receive. Instead of treating people like members of a social club who should pay dues, we will treat people like followers of Jesus Christ who want to give unselfishly as an act of discipleship. *New Consecration Sunday* encourages people toward proportionate and systematic giving in response to the question, "What percentage of my income is God calling me to give?"

During morning worship on Consecration Sunday, November, 19, we are asking our attendees and members to make their financial commitments to our church's missionary, benevolent, and educational ministries in this community and around the world.

Every attendee and member who completes an *Estimate of Giving Card* does so voluntarily by attending morning worship on Consecration Sunday. We urge people to attend who feel strongly opposed to completing a card. The procedure is done in such a way that no one feels personal embarrassment if he or she chooses not to fill out a card.

We will do no home solicitation to ask people to complete cards. During morning worship our guest leader will conduct a brief period of instruction and inspiration, climaxed by members making their commitments as a confidential act of worship. We will make every effort to inform, inspire, and commit everyone to attend Consecration Sunday worship.

Thanks in advance for your enthusiastic participation in Consecration Sunday events.



Around the Community



VETERAN'S DAY MUSICAL PROGRAM



Sunday, November 12, 2017



ST. JOHN'S GERNANT'S CHURCH
13 GERNANT'S CHURCH ROAD
LEESPORT, PA



The program will feature patriotic music presented by people from local community churches under the direction of Barry Driesbach, musical director at Gernant's. There will also be readings, participation from a local Boy Scout troop, and a musical video presentation presented by the audio-visual class at Hamburg Area High School to honor veterans - past and present. An offering will be taken to benefit a local veteran organization. PLEASE JOIN US AS WE SAY "THANK YOU" TO OUR VETERANS FOR ALL THEY HAVE DONE!

(Light refreshments will be available after the program)

St. Michael's Church

Holiday Bazaar



Basket Raffle

Flea Market and Food Sale

Friday, November 10, 2017 4 pm- 8 pm

Chicken Platters

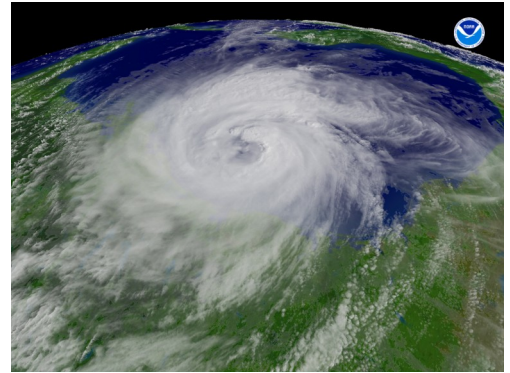
Saturday, November 11, 2017 8 am- 1 pm

Breakfast Sandwiches

Both Days: lunch items, cookies, basket raffle, flea market, baked goods

529 St. Michael's Church Rd, Hamburg 19526

Your Part in the ELCA Hurricane Relief Efforts



Hurricane Relief

The situation:

The world has been experiencing one of the highest concentration of major hurricanes in recent times. There have been at least sixteen named storms, five of which have impacted the U.S. mainland and/or territories, leaving widespread damage across Texas, Florida, Georgia Louisiana, Mississippi, Puerto Rico, Costa Rica, Nicaragua, Haiti, Cuba, the U.S. Virgin Islands.

Our response:

Hurricane Harvey

In the midst of a strong local response by individuals and congregations, the groundwork has been laid for the extended long-term recovery work of disaster case management, emotional and spiritual care, volunteer coordination and construction management. Lutheran Disaster Response is working with two of the Texas Synods across the impacted areas of Texas. We anticipate working in the Dickinson and Rockport areas in partnership with Upbring (Lutheran Social Services of the South). With the support of Lutheran Disaster Response, a coordinator will be working to help facilitate volunteers and material donations in the region.

Hurricane Irma and Maria

Lutheran Disaster Response is working with the Florida-Bahamas Synod, the Caribbean Synod, and other International companions and partners to provide relief to the most vulnerable in the U.S. and around the world.

- In Florida, the initial response, in addition to local efforts at clean-up and providing temporary shelter, has focused on crisis counseling to thousands in 20 Florida counties. This work is being done through our affiliate, Lutheran Services of Florida. Early support has been extended to care providers so that they can be assured their families are in a stable living situation, and area able to turn their attention to the care of the most vulnerable in the community.
- In Puerto Rico and the Virgin Islands, we're coordinating the delivery of critical items including dry food, generators, and solar-powered phones.
- In Haiti, we're supporting woman-headed households and farmers who were affected by the hurricanes.
- In Cuba, we're supporting the distribution of items like cookware, dishes, and blankets to help families get back to normal life.

Tropical Storm Nate

Through our companion church, Iglesia Luterana Costarricense (ILCO), we are planning an immediate response by providing food, access to clean water and other services. We will focus our efforts on indigenous communities along the central and southern parts of Costa Rica's Pacific Coast.

LCHT raised \$1,123 to assist with the recovery efforts necessitated by these storms. Thank you for your generosity and support of Lutheran Disaster Response!!

Connect:

To learn more about the situation and the ELCA's response:

Sign up to receive Lutheran Disaster Response [alerts](#).

Check the Lutheran Disaster Response [blog](#).

Like Lutheran Disaster Response on [Facebook](#) and follow @ELCALDR on [Twitter](#).

About The Lutheran Church of the Holy Trinity

Our Mission:

"The Lutheran Church of the Holy Trinity is a worshipping, growing community of faith in Christ Jesus, led by the Holy Spirit to reach out and serve all people with God's love."

About The Herald:

The Holy Trinity Herald is a newsletter distributed by the beginning of each month, except August. Articles can be submitted to the church office or e-mailed (preferred) to the Secretary.

Deadline for article submission is the 15th of each month.

LCHT Sundays' Schedule:

Worship at 9 a.m.
Confirmation Class @
10:30 a.m.

LCHT Staff Information:

Pastor: The Rev. Dennis Ritter
Office: 610-926-9426
Cell: 484-529-7801
E-mail: dsritter@ptd.net

Secretary: Amanda Schwendeman
Office : 610-926-9425 ext. 1
E-mail: lchtsecretary@comcast.net
Office hrs: Monday - Friday 9 to 1

Sexton: Ana Calencea

Treasurer: Pat Miller
E-mail: lchttreasurer@comcast.net

Music Director: Virginia Lash
Home: 610-916-1316
E-mail: vlash224@comcast.net

Website: www.lcht.org

Mailing Address:
102 Apple St.
Leesport, PA 19533

Church Fax Number:
610-926-7273

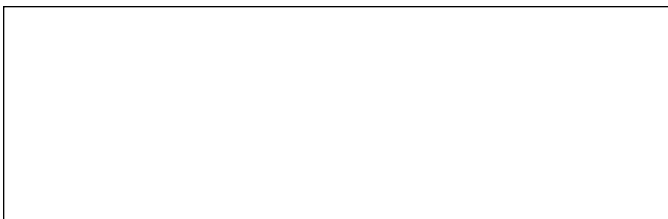
Rocking Horse Preschool Information:

Teachers: Mrs. Aliesha Woods
Mrs. Adrienne Leshner
Office: 610-926-7176 ext. 3
Email: rhps@comcast.net

Mailing Address:
Rocking Horse Preschool
The Lutheran Church of the Holy Trinity
102 Apple St
Leesport, PA 19533

Website: www.lcht.org

November 2017



Return Service Requested

The Lutheran Church of the Holy Trinity
102 Apple Street
Leesport, PA 19533