

Last days to get involved in playing chess inside Rogers Place and enjoy an Oil Kings Hockey game!

Unique individual trophies for first place! All players get an award! Draw Prizes! Souvenir! All levels of players welcome!
See back page for more details and entry/order form • Call 780-474-2318 if any questions or to order

Roving ChessNuts CHESS Teasers



NEWS, RESULTS, UPCOMING EVENTS, PHOTOS AND INTERESTING STUFF
MAINLY ABOUT SCHOLASTIC CHESS IN EDMONTON & CHESSNUTS ACTIVITIES



Volume 10, Issue 15 • February 26, 2018

Chess Activities The following scholastic chess competitions and activities in Edmonton and area are subject to change. Keep updated: regularly check the website: www.rovingchessnuts.com Make sure you are on ChessNuts' e-mail contact list so you get newsletters, updates on school programs and other information. To subscribe, e-mail: rovingchessnuts@shaw.ca or call: 780-474-2318.

Thursday, March 1: Training session for first time tournament players at **Greenfield Hall, 6:30 to 7:45 p.m.** \$10 fee. Practice using clock, learn tournament rules. Great for those less experienced, younger players entering Chess Faceoff on March 11. Please use back entrance to hall.

In final days leading up to Chess Faceoff at Rogers Place: Those players entered or planning to enter are urged to not only make sure to attend their chess classes at schools, Greenfield Hall or Roving ChessNuts, but also practice at home. For those in the beginning phase of their chess, please be sure to practice your basic checkmating and pawn promotion. Imagine you are clearly winning a tournament game and then forget in the end how to checkmate! All players: Try to play as much chess as possible with different opponents. Facing a variety of opponents and facing that challenge is essential to develop chess skills.

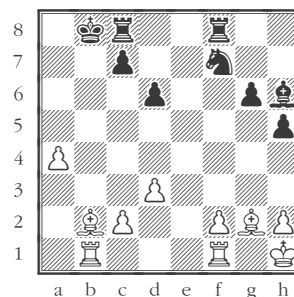
March 1 & 2: Teachers' Convention Chess Camps at Roving ChessNuts. Limited enrollment. E-mail or phone to reserve a spot. See below for details.

March 11: Giant Scholastic Tournament at Rogers Place!

Check www.rovingchessnuts.com & future newsletters for updates, new events and online registration for events, plus details on school programs and classes

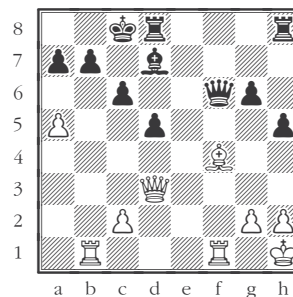
Last issue's puzzle answers:

White to Checkmate in 1 move!

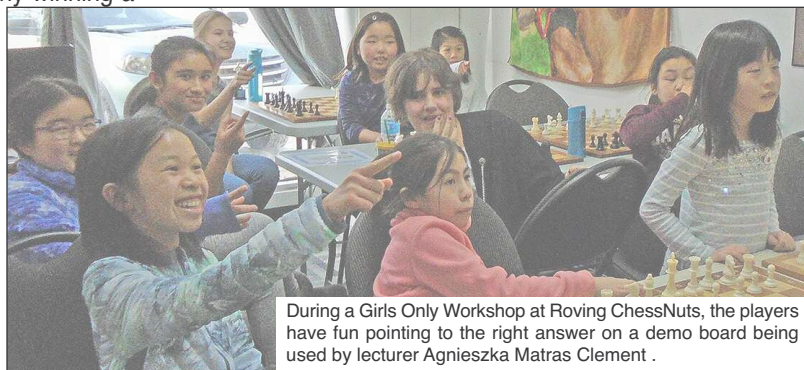


B to d4 is discovered checkmate as rook checks and bishop eliminates only escape square for black king!

White to Checkmate in 2 moves



Q to a6! If black captures Q, Rb8 checkmates; or if black Q captures Bf4, Qxb7 checkmates!



Just a few seats left for

Teachers Convention Chess Camps

at the Roving ChessNuts 12019 76 Street, Edmonton

Full Day (8:30 to 5 p.m.) Half Day (8:30 to 12:30 or 1 to 5 p.m.)

Thursday & Friday, March 1 and 2, 2018

(Limited enrollment of 12 students, priority to full-day and those entered in Chess Faceoff at Rogers Place on March 11)
(Full-Day players bring a bag lunch; a.m./p.m. healthy snacks provided morning and afternoon)

If a student can only attend one-day, Thursday is best for beginning players while Friday would be best for more experienced player - if preferred is both days that is fine because two instructors on hand to divide lessons and coaching according to skill level.

Special workshops on Friday conducted by women's International Master Agnieszka Matras-Clement
Alberta's Highest Rated Female Player • Third in 2017/18 Canadian Women's Championship

Full Day: \$49 plus GST Two Full Days \$90 plus GST

Half-Day: \$29 plus GST Two Half Days: \$52 plus GST

Dropoffs accepted
as early as 8 a.m.;
pick-up til 5:20 p.m.



12015/19 - 76 Street NW
Edmonton, AB T5B 2C9
780-474-2318

Family Discounts 15% applied
for second student; 30% third

Payment can be made by cheque, credit card, debit card or cash and must be arranged at time of enrollment. Refund, minus \$15 administrative fee can be requested for cancellations received one week prior to start of camp. In case of illness or other reasonable absence, credit can be extended to other camp dates or other Roving ChessNuts programs and classes.

Last week to enter and be seated with chess families at Oil Kings game!

This form can also be printed from www.rovingchessnuts.com



CHESSEASERS AT ROGERS PLACE WITH THE OIL KINGS

JOIN ROVING CHESSEASERS & JUNIOR HOCKEY FANS AT ROGERS PLACE FOR INDIVIDUAL AND SCHOOL TEAM SCHOLASTIC CHESSEASERS TOURNAMENT FOLLOWED BY CHESSEASERS PLAYERS AND THEIR FAMILIES SEATED TOGETHER TO ENJOY AN EDMONTON OIL KINGS VS KOOTENAY ICE GAME

Souvenir Chess Scorebook • Draw Prizes

Lots of Fun and Excitement plus C'nM rating points to gain!

Every chess player, Grade 1 to 12, goes home with either a trophy or medal!

SUNDAY, MARCH 11, 2018

CHESSEASERS SIGN-IN AT 12:30 PM AT ROGERS PLACE

OIL KINGS VS. ICE GAME AT 4:00 PM



Join over 60 scholastic players in this unique event of chess being played in Rogers Place! All levels of players will be competing!

FOR MORE INFORMATION CONTACT CHRIS GARDNER AT 780-664-0750 OR CGARDNER@EDMONTONOILERS.COM

OILKINGS.CA



EDMONTON OIL KINGS ORDER FORM

Tournament spaces are limited, book quickly.

DEADLINE FOR ORDERS: SATURDAY, MARCH 3, 2018

Chess Entry & Ticket Order Form

for Chess Faceoff at Rogers Place with the Oil Kings

Chess player(s) name(s): _____
 Others same family: _____
 School Name & Grade Level: _____
 Phone No. _____
 E-Mail _____

If chess player is not currently rated by the national Chess'n Math Association or not involved in a current Roving ChessNuts program, parent must contact us to arrange evaluation to determine placement in competition. Please E-mail rovingchessnuts@shaw.ca or phone 780-474-2318.

Please Note: It is mandatory for supervision purposes that at least one adult accompanies player(s) from the same family to the tournament and hockey game. Other parents and siblings could arrive closer to hockey time, about 3:30 p.m. to join chess player. All players must be signed in for the competition by 12:50 p.m. or could forfeit first round game. Minimum of 3 games each player.

Entry and Ticket Packages

| | | | | | | | | | | | |
|------------------------------|-------------|-----|-------------------------------|------|-----------|------------------------|------|-----------|--------------------------------------|-----------|---|
| Single player entry & ticket | \$35 | X 1 | Additional player same family | \$30 | X | Adult Hockey Ticket(s) | \$25 | X | Under 18 Sibling or Friend Ticket(s) | \$23 | X |
| Total \$ | \$35 | | \$ | | \$ | \$ | | \$ | | \$ | |

Total \$ _____ Price includes taxes & fees

All entries and ticket orders must be paid for when ordered! Orders can be placed by phone and tickets can be held for pick-up prior to or at tournament on March 11.

Payment method: Cheque payable: Roving ChessNuts _____ No payments at tournament!
 Credit/Debit Card _____ Cash _____

Cheques can be given to instructors at school or other chess classes or to Roving ChessNuts, 12015 76 Street, Edmonton, AB T5B 2C9; Cards can be called to 780-474-2318. Roving ChessNuts location hours: Weekdays 8:30 to 4:30, Saturdays 9 to 1, or by appointment for evaluations and payments.

Updates on event: www.rovingchessnuts.com

DEADLINE for orders: Saturday, March 3, 2018