

- Legend**
- Non-Cropland
  - Cropland
  - Tract Boundary
  - CRP
  - low a PLSS
  - low a Roads

Tract Cropland Total: 202.20 acres

2018 Program Year  
Map Created March 07, 2018

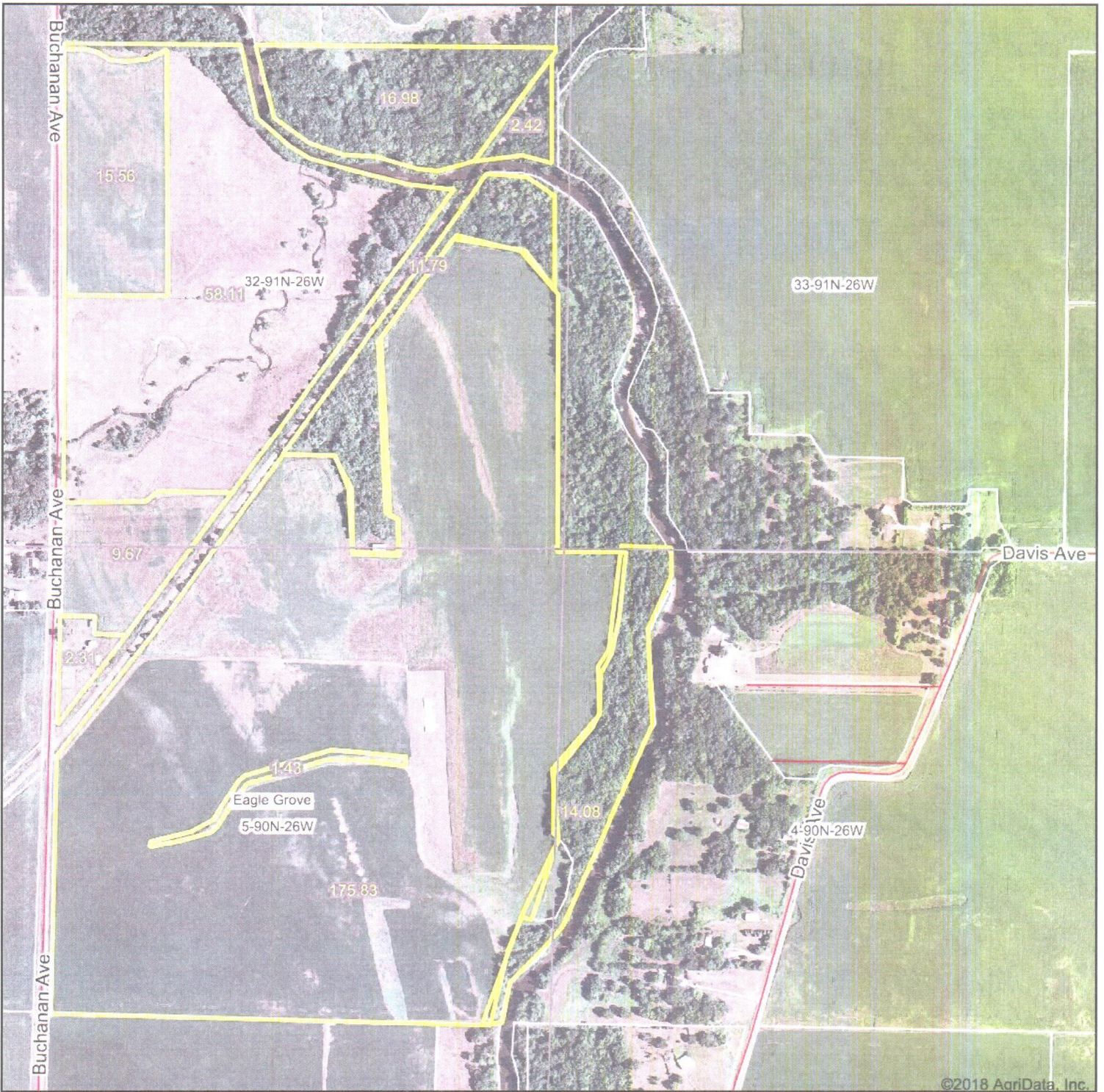
**Farm 6707**  
**Tract 1528**

- Wetland Determination Identifiers**
- Restricted Use
  - ▼ Limited Restrictions
  - Exempt from Conservation Compliance Provisions

United States Department of Agriculture (USDA) Farm Service Agency (FSA) maps are for FSA Program administration only. This map does not represent a legal survey or reflect actual ownership; rather it depicts the information provided directly from the producer and/or National Agricultural Imagery Program (NAIP) imagery. The producer accepts the data 'as is' and assumes all risks associated with its use. USDA-FSA assumes no responsibility for actual or consequential damage incurred as a result of any user's reliance on this data outside FSA Programs. Wetland identifiers do not represent the size, shape, or specific determination of the area. Refer to your original determination (CPA-026 and attached maps) for exact boundaries and determinations or contact USDA Natural Resources Conservation Service (NRCS).

USDA is an equal opportunity provider, employer, and lender.

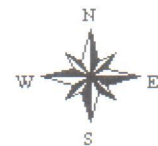
# Aerial Map



map center: 42.644614, -93.931841

0ft 814ft 1627ft

**5-90N-26W**  
**Wright County**  
**Iowa**



8/20/2018

Gold-Eagle Cooperative

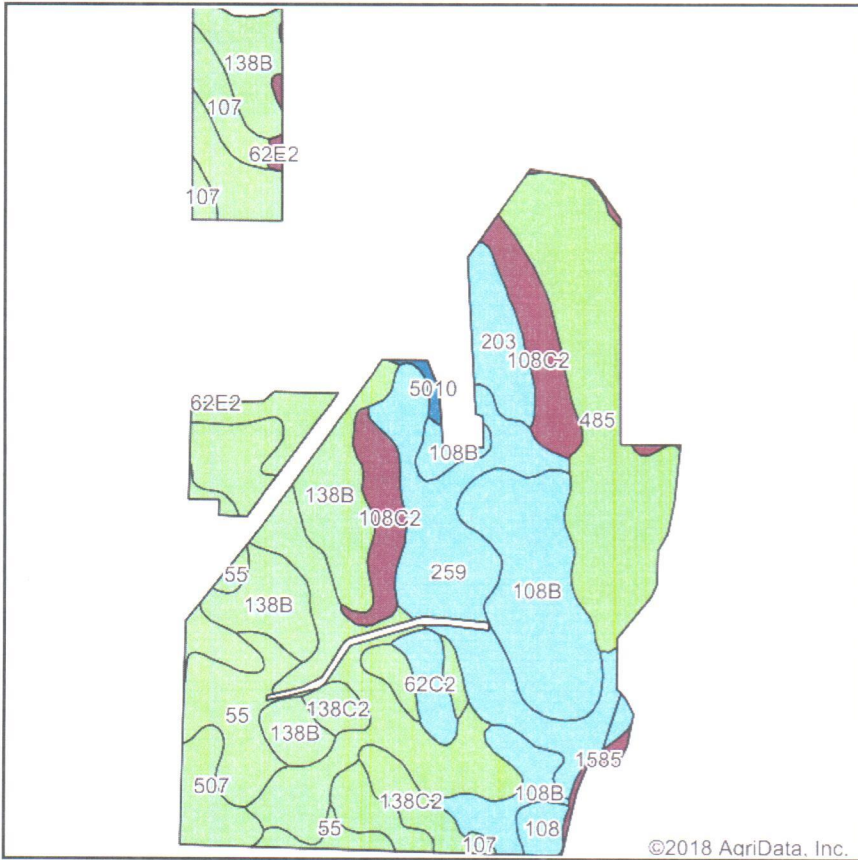


Maps Provided By:



© AgriData, Inc. 2018 www.AgridataInc.com

# Soils Map



Soils data provided by USDA and NRCS.

©2018 AgriData, Inc.



©2018 AgriData, Inc.

State: **Iowa**  
 County: **Wright**  
 Location: **5-90N-26W**  
 Township: **Eagle Grove**  
 Acres: **202.14**  
 Date: **8/20/2018**



Maps Provided By:



## Area Symbol: IA197, Soil Area Version: 24

Code	Soil Description	Acres	Percent of field	CSR2 Legend	Water Table	Restrictive Layer	Septic Limits	Foundation Limits	Non-Irr Class *c	CSR2**	CSR	Oats	Spring wheat	NCCPI Soybeans
138B	Clarion loam, 2 to 6 percent slopes	35.83	17.7%		2.9ft.	> 6.5ft.	very limited	somewhat limited	Ile	89	80			83
107	Webster clay loam, 0 to 2 percent slopes	30.50	15.1%		0ft.	> 6.5ft.	very limited	very limited	Ilw	86	83			80
485	Spillville loam, 0 to 2 percent slopes, occasionally flooded	29.99	14.8%		1.5ft.	> 6.5ft.	very limited	very limited	Ilw	88	86			81
108B	Wadena loam, 2 to 6 percent slopes	25.69	12.7%		> 6.5ft.	> 6.5ft.	very limited	not limited	Ile	52	49	4	2	50
259	Biscay clay loam, 0 to 2 percent slopes	25.42	12.6%		0.3ft.	> 6.5ft.	very limited	very limited	Ilw	52	75	2	2	61
55	Nicollet clay loam, 1 to 3 percent slopes	13.81	6.8%		1.5ft.	> 6.5ft.	very limited	very limited	Iw	89	88			78
108C2	Wadena loam, 6 to 12 percent slopes, moderately eroded	12.94	6.4%		> 6.5ft.	> 6.5ft.	very limited	not limited	Ille	44	24	4	2	42
507	Canisteo clay loam, 0 to 2 percent slopes	7.27	3.6%		2ft.	> 6.5ft.	very limited	very limited	Ilw	84	78			79
203	Cylinder loam, 0 to 2 percent slopes	6.20	3.1%		1.3ft.	> 6.5ft.	very limited	very limited	Ils	58	76			59
138C2	Clarion loam, 6 to 10 percent slopes, moderately eroded	5.67	2.8%		4.6ft.	> 6.5ft.	somewhat limited	somewhat limited	Ille	83	63			65
62C2	Storden loam, 6 to 10 percent slopes, moderately eroded	3.22	1.6%		6.2ft.	> 6.5ft.	somewhat limited	somewhat limited	Ille	64	51			65
108	Wadena loam, 0 to 2 percent slopes	1.97	1.0%		> 6.5ft.	> 6.5ft.	very limited	not limited	Ils	56	54			50

1585	Spillville-Coland complex, channeled, 0 to 2 percent slopes	1.36	0.7%		3ft.	> 6.5ft.	very limited	very limited	Vw	30	25			49
27B	Terril loam, 2 to 6 percent slopes	0.96	0.5%		3.6ft.	> 6.5ft.	very limited	somewhat limited	Ile	87	80			81
62E2	Storden loam, 10 to 22 percent slopes, moderately eroded	0.66	0.3%		> 6.5ft.	> 6.5ft.	very limited	very limited	IVe	32	31			53
5010	Pits, sand and gravel	0.65	0.3%		> 6.5ft.	> 6.5ft.	not rated	not rated		0	0			0
<b>Weighted Average</b>										<b>73.3</b>	<b>71.6</b>	<b>1</b>	<b>0.6</b>	<b>69.7</b>

\*\*IA has updated the CSR values for each county to CSR2.

\*c: Using Capabilities Class Dominant Condition Aggregation Method

Soils data provided by USDA and NRCS.

# Aerial Map



©2018 AgriData, Inc.

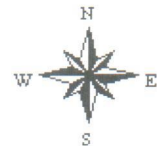
map center: 42.644270, -93.933377

0ft 827ft 1654ft



Maps Provided By:  
**surety**  
CUSTOMIZED ONLINE MAPPING  
© Agndata, Inc. 2018 www.AgrIDataInc.com

**5-90N-26W**  
**Wright County**  
**Iowa**



8/23/2018

Field borders provided by Farm Service Agency as of 5/21/2008.

*Section 32 Morgan*