



Quality Wholesale Window Coverings
Contract • Hospitality • Healthcare • Residential

STYLE
3000

WEAVING
EXCELLENCE
WITH
INNOVATION



		SOLAR OPTICAL PROPERTIES				SHGC/G VALUE g-tot (glass & blind)	
Code	Color	TS	RS	AS	TV	SINGLE 1/4 CL	INSULATING 1 HA
STYLE 3000 - 14%							
P01	Pearl White	24	62	14	21	0.33	0.23
Q01	Mushroom Sand	22	45	33	21	0.42	0.28
Q02	Custard Cream	23	53	24	22	0.37	0.26
Q04	Chocolate	13	4	83	15	0.63	0.38
Q17	Sand Dollar	17	46	37	15	0.41	0.27
Q18	Espresso	15	9	76	16	0.60	0.37
Q19	Honey Sage	16	31	53	16	0.49	0.31
V01	Pale Grey	19	40	41	19	0.44	0.29
V02	Ninja Grey	12	8	80	14	0.60	0.37



PROTECTION THAT LIVES ON
MICROBAN®
 Microban® antimicrobial protection inhibits the growth of stain-causing bacteria, mold and mildew on the shade.



PRODUCT CERTIFIED FOR
 LOW CHEMICAL EMISSIONS
UL.COM/GG
 UL 2818



TS = Solar Transmittance
 RS = Solar Reflectance
 AS = Solar Absorptance
 TV = Visual Transmittance

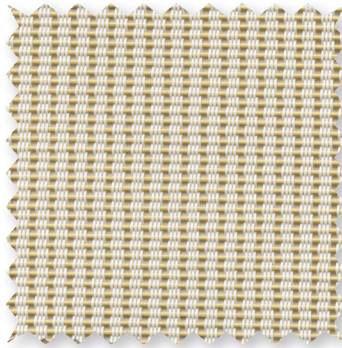
SHGC = Solar Heat Gain Coefficient

1/4 CL = 1/4" Clear Glass
 1 HA = 1" Heat Absorbing Glass

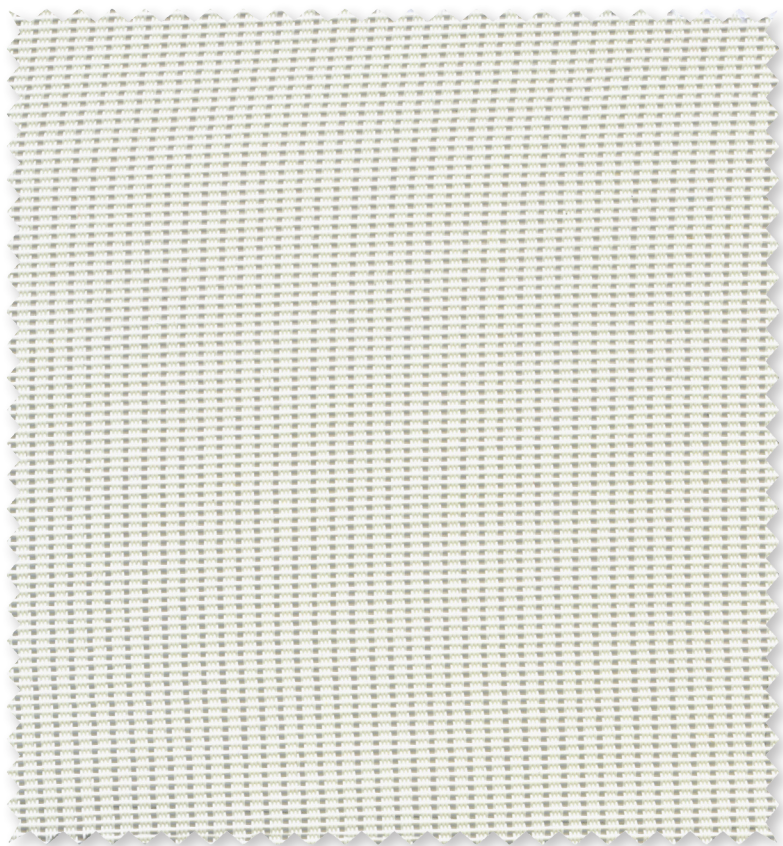
Fabrics Installed Internally
 Zero-Degree Profile Angle

For additional performance values, test references and technical definitions visit us at www.phifer.com.

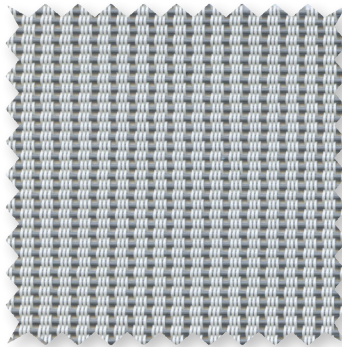
Q02 Custard Cream



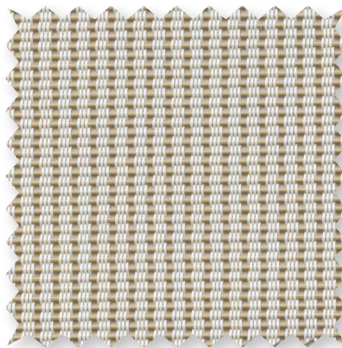
P01 Pearl White



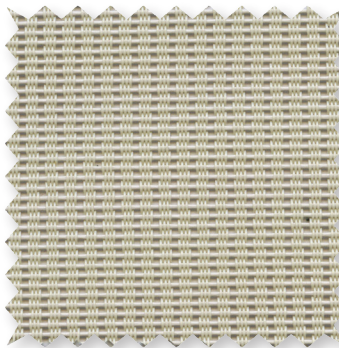
V01 Pale Grey



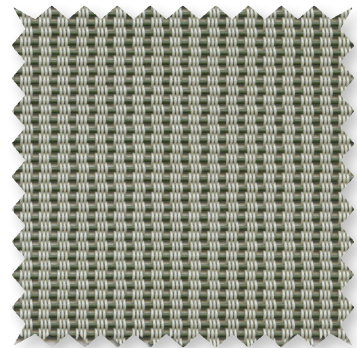
Q01 Mushroom Sand



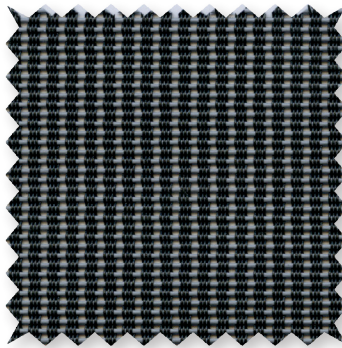
Q17 Sand Dollar



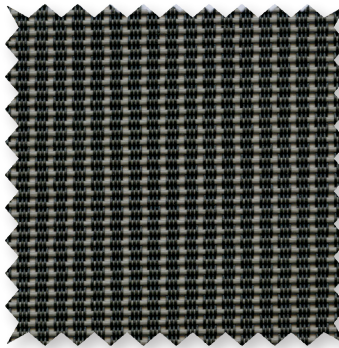
Q19 Honey Sage



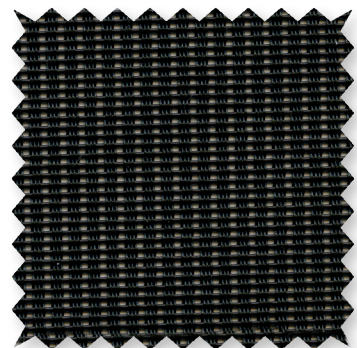
V02 Ninja Grey



Q18 Espresso



Q04 Chocolate



*Colors may vary based on individual computer settings and should only be used for general reference.

STYLE 3000 SPECIFICATIONS

Combining vinyl coated fiberglass and polyester yarns, Style 3000 is woven into a unique rib weave for a distinct look and color pallet. The 14% openness of Style 3000 lets in more natural light while providing excellent outward visibility. Style 3000 can also be used in exterior shading systems.

FIRE CLASSIFICATION	NFPA 701 TM#1 (small scale)	NFPA 101 (Class A Rating)
	NFPA 701 TM#2 (large scale)	IBC Section 803.1.1 (Class A Rating)

Fire classifications are subject to change. It is the user's responsibility to check for the most current fire ratings at phifer.com.

BACTERIA AND FUNGAL RESISTANCE	ASTM E 2180	ASTM G21	AATCC30 Part 3	ASTM D 3273	ASTM G22
	GREENGUARD Mold and Bacteria Standard ASTM 6329 includes Microban antimicrobial additives				
ENVIRONMENTAL CERTIFICATION	GREENGUARD	GREENGUARD Gold			
	Certified to these standards for low chemical emissions into indoor air during product usage				
LEAD FREE	RoHS/Directive 2002/95/EC		REACH (EC 1907/2006) compliant		
	ANSI/WCMA A 100.1-2007 for lead content				
	US Consumer Product Safety Commission Section 101				
WARRANTY	10-year interior	5-year exterior			
TRACKLESS	TrackLess Technology minimizes the fiberglass yarns' inherent tendencies to track when being rolled up in a shade. With TrackLess Technology these same fabrics now track less, roll up straighter and reduce shade fabrication time.				

STYLE 3000

WIDTHS	72" and 96" 182.9 cm and 243.8 cm
ROLL LENGTH	30 Linear Yards 27.4 m
COMPOSITION	35% Fiberglass, 65% Vinyl on Fiberglass 31% Polyester, 69% Vinyl on Polyester
MESH WEIGHT	13.46 oz/yd ² 456 g/m ²
FABRIC THICKNESS	0.028 in 0.71 mm
OPENNESS FACTOR	Approximately 14%
UV BLOCKAGE	Approximately 86%

PHIFER
INCORPORATED

P. O. Box 1700 • Tuscaloosa, Alabama 35403-1700 USA
Phone: 205.345.2120 • FAX: 205.391.0799
Toll Free USA/Canada: 1.800.221.5497
phifer.com • ISO Registered



® SheerWeave is a registered trademark of PHIFER INCORPORATED.
® MICROBAN is a registered trademark of Microban Products Company.
™ UL, the UL logos and the UL mark are trademarks of UL LLC.
Photo courtesy of Hunter Douglas, USA.
© PHIFER INCORPORATED V18 101718 3033838