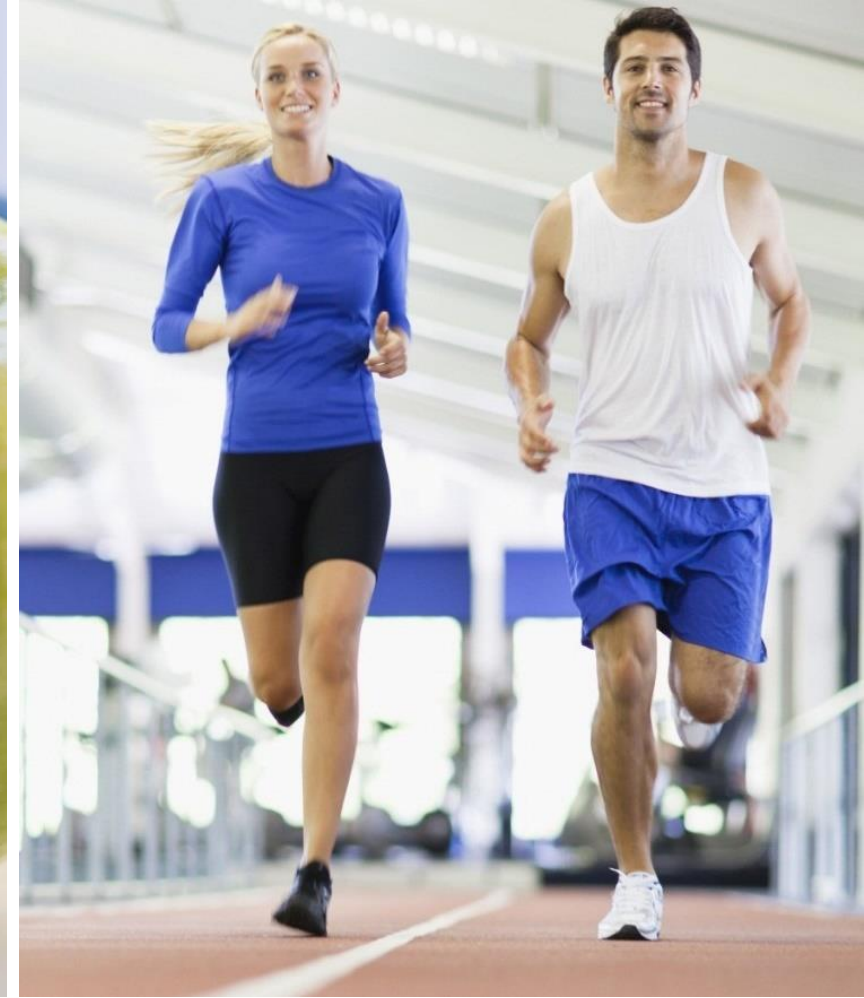




**OCHD**   
OLDHAM COUNTY HEALTH DEPARTMENT  
*healthy people...strong community*



# COMMUNITY HEALTH ASSESSMENT DATA REVIEW

AUGUST 2021

# AGENDA

- Social Determinants of Health
- Oldham County: A Comparison
- How Has Oldham County Changed?
- Determinants Data
  - Healthcare Access and Quality
  - Education Access and Quality
  - Social and Community Context
  - Economic Stability
  - Neighborhood and Built Environment
- Closing Remarks

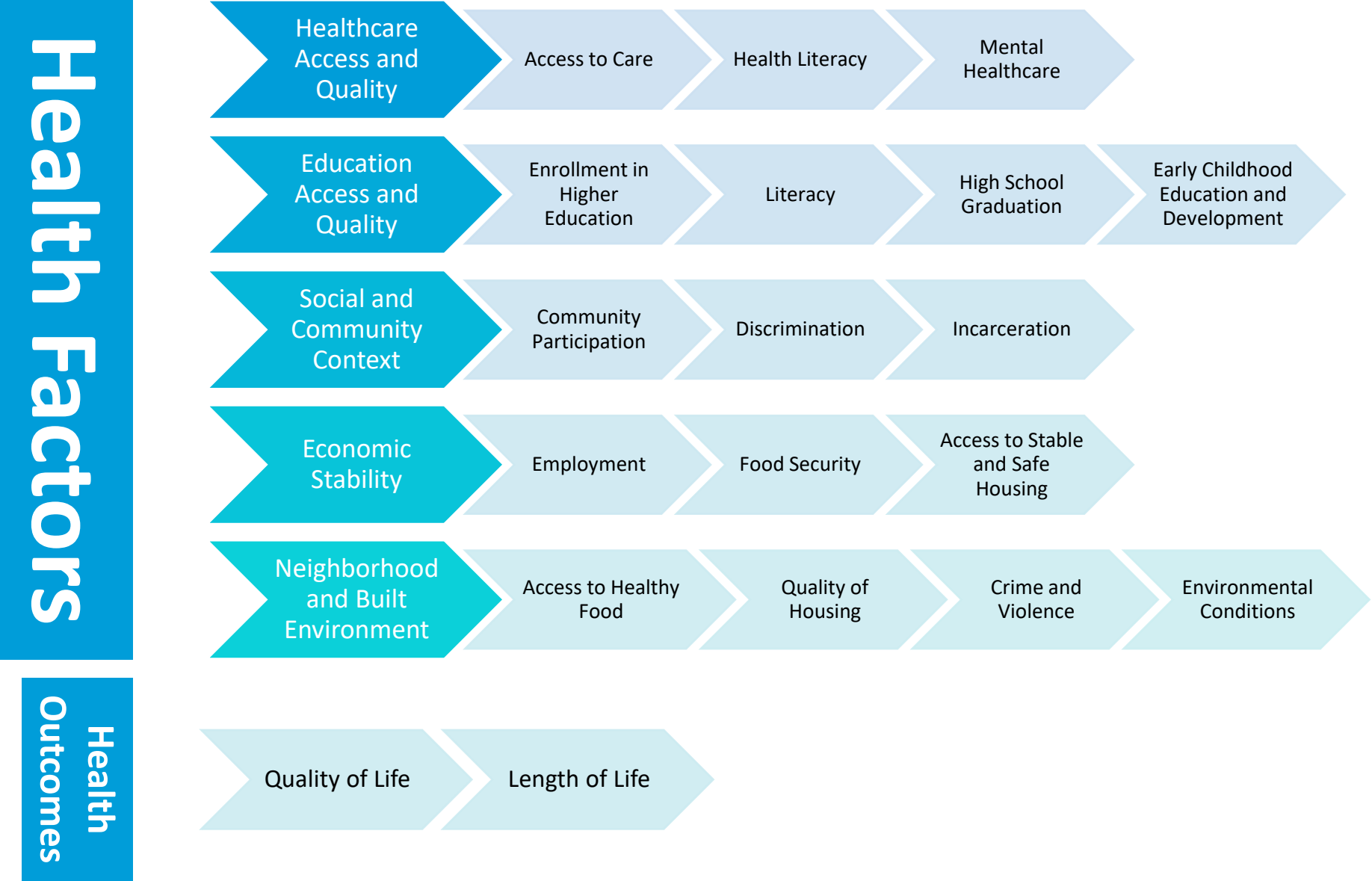
# SOCIAL DETERMINANTS OF HEALTH (SDOH)



Social Determinants of Health (SDOH) are the conditions in the environments where people are born, live, work, play, worship, and age that affect a wide range of health, functioning, and quality of life outcomes and risks.

SDOH can also contribute to large health disparities and inequities within communities.

# SOCIAL DETERMINANTS OF HEALTH



# OLDHAM COUNTY: A COMPARISON

	Oldham County	Kentucky	United States
<b>Population</b>			
Population estimates, July 1, 2019 (v2019)	66,799	4,467,673	328,239,523
<b>Age</b>			
Persons under 5 years, percent, July 1, 2019	5.2%	6.1%	6.0%
Persons under 18 years, percent, July 1, 2019	25.4%	22.4%	22.3%
Persons 65 years and Older, percent, July 1, 2019	13.7%	16.8%	16.5%
<b>Race and Hispanic Origin</b>			
White alone, percent, July 1, 2019	91.6%	87.5%	76.3%
Black or African American alone, percent, July 1, 2019	4.4%	8.5%	13.4%
American Indian and Alaska Native alone, percent, July 1, 2019	0.4%	0.3%	1.3%
Asian alone, percent, July 1, 2019	1.7%	1.6%	5.9%
Two or More Races, percent, July 1, 2019	1.8%	2.0%	2.8%
Hispanic or Latino, percent, July 1, 2019	4.0%	3.9%	18.5%
White alone, not Hispanic or Latino, present, July 1, 2019	88.2%	84.1%	60.1%

	Oldham County	Kentucky	United States
<b>Housing</b>			
Owner Occupied Housing Unit Rate, 2015-2019	84.7%	67.2%	64.0%
Houses built before 1980, 2019	30.4%	50.6%	53.6%
<b>Education</b>			
High school graduate or higher, percent of persons age 25 years+, 2015-2019	93.8%	86.3%	88.0%
Bachelor's degree or higher, percent of persons age 25 years+, 2015-2019	42.4%	24.2%	32.1%
<b>Access to Care</b>			
Percent adults age 18-64 without health insurance	4.3%	7.7%	9.5%
<b>Income and Poverty</b>			
Median household income (in 2015 dollars), 2015-2019	\$99,128	\$50,589	\$62,843
Persons in poverty, percent	4.9%	16.3%	10.5%
Percent of students on free or reduced lunch, 2015-2016 school year	26%	60.7%	-
<b>Unemployment</b>			
The annual average percentage of the workforce that is currently unemployed and actively seeking work, June 2021	4.6%	5.5%	-
<b>Food Insecurity</b>			
Estimated percent of population experiencing some level of food insecurity	7%	15%	9%

# HOW HAS OLDHAM COUNTY CHANGED?



Oldham County has become **larger**, with a population increase of 12.1% (1.2% annually) since the 2010 census.<sup>1</sup> Growing populations could lead to increasing challenges in housing, job availability, access to clinical services within the county and additional socioeconomic factors that impact health.



As the population has increased, Oldham County became slightly **younger**. When age distribution shifts, public health focus may be impacted.

From 2016 to 2019, there was a slight decrease in those 65 and older. In those 19 and younger, a slight increase was recorded.



A higher percentage of persons 25 years or older are high school graduates. This signals a **more educated** community when compared to 2016 estimates<sup>1</sup>.



# HOW HAS OLDHAM COUNTY CHANGED?

The percent of adults aged 18-64 without some form of health insurance has increased by 1% since 2016.

A **less insured** community can present obstacles in access to health care and decreased health outcomes.



The median household income increased by almost \$13,000<sup>1</sup> between 2016 and 2019 and the annual unemployment rate dropped almost 0.5% in Oldham County<sup>3</sup>.

This **economic growth** could help both individuals and the community at large have improved access and resources for health improvement.



Most racial and ethnic groups included in the census data are growing, creating a **more diverse** Oldham County.



# SOCIAL VULNERABILITY INDEX

# CDC Social Vulnerability Index 2018

Oldham County, Kentucky

PART 1

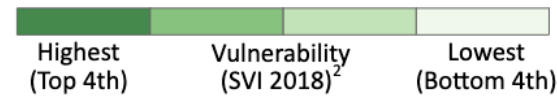
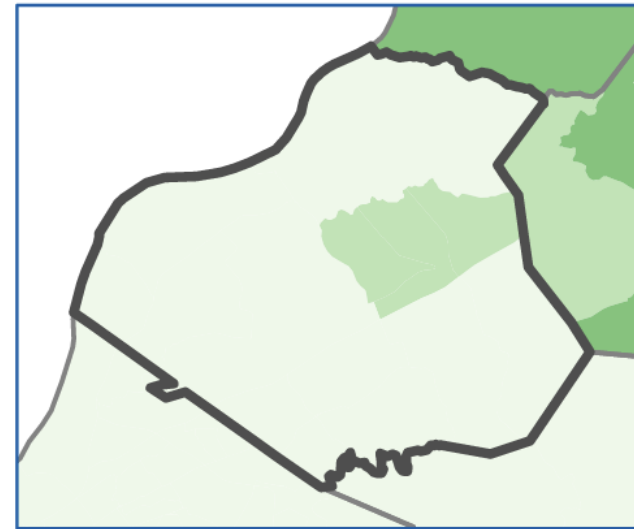
## Overall Social Vulnerability<sup>1</sup>



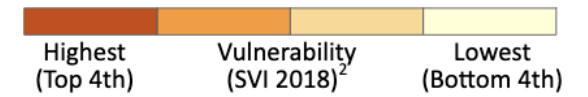
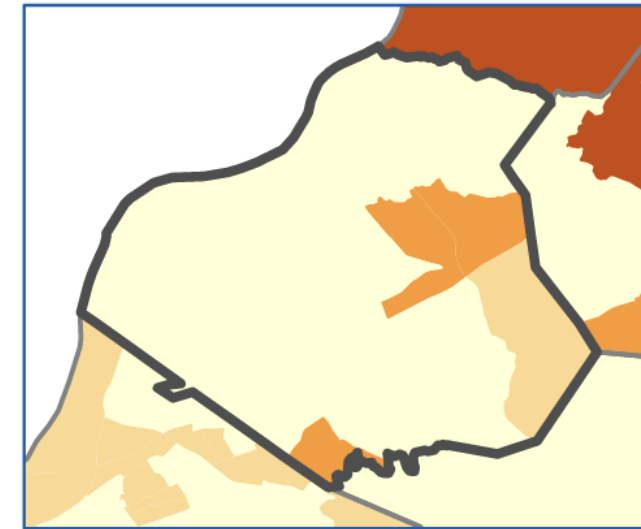
**Social vulnerability** refers to a community's capacity to prepare for and respond to the stress of hazardous events ranging from natural disasters, such as tornadoes or disease outbreaks, to human-caused threats, such as toxic chemical spills. The **CDC Social Vulnerability Index (CDC SVI 2018)**<sup>4</sup> County Map depicts the social vulnerability of communities, at census tract level, within a specified county. CDC SVI 2018 groups **fifteen census-derived factors** into **four themes** that summarize the extent to which the area is socially vulnerable to disaster. The factors include economic data as well as data regarding education, family characteristics, housing, language ability, ethnicity, and vehicle access. Overall Social Vulnerability combines all the variables to provide a comprehensive assessment.

## CDC SVI Themes

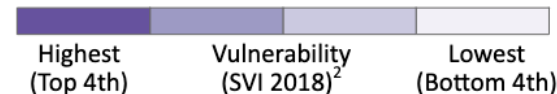
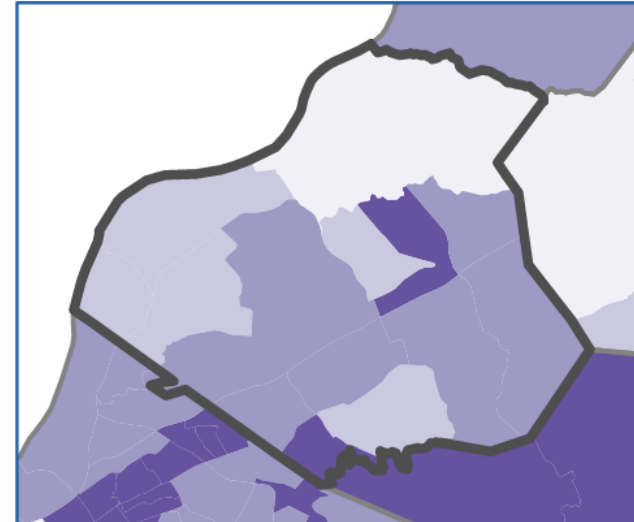
### Socioeconomic Status<sup>5</sup>



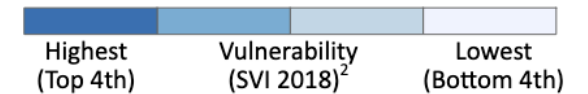
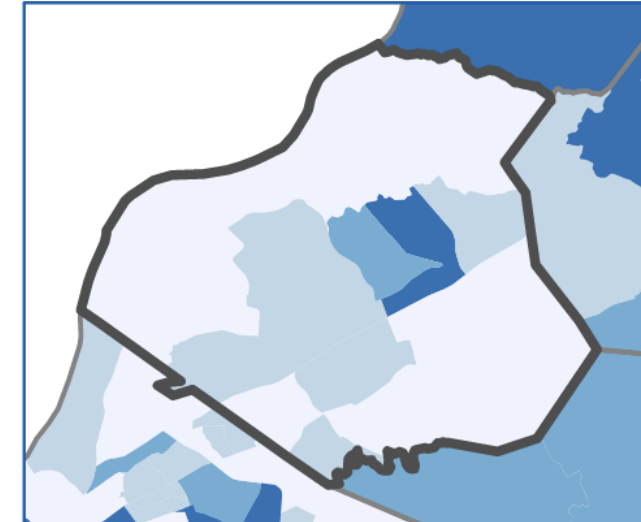
### Household Composition/Disability<sup>6</sup>



### Race/Ethnicity/Language<sup>7</sup>



### Housing Type/Transportation<sup>8</sup>



MAP PRODUCED 3/26/2020

Agency for Toxic Substances and Disease Registry

Division of Toxicology and Human Health Sciences

FINAL - FOR EXTERNAL USE



# HEALTHCARE ACCESS AND QUALITY

# ACCESS TO CARE

Healthcare access and quality characterizes the connection between people's access to and understanding of health services and their own health. Issues that are addressed under this domain include access to primary care services, health insurance coverage, and health literacy.

ACCESS TO CARE MEASURE	Oldham County	Kentucky
Percent of adults who report having received a flu vaccine in the past year	45%	38%
Percent of adults who report that they have not had their cholesterol level checked in the past 5 years	10%	24%
Percent of adults younger than 65 who report having ever been tested for HIV	23%	34%
Percent of adults reporting that there was one person they think of as their personal doctor or health care provider	81%	82%
Percent of adults who report that there was a time in the past year when they needed to see a doctor but could not because of the cost	4%	12%

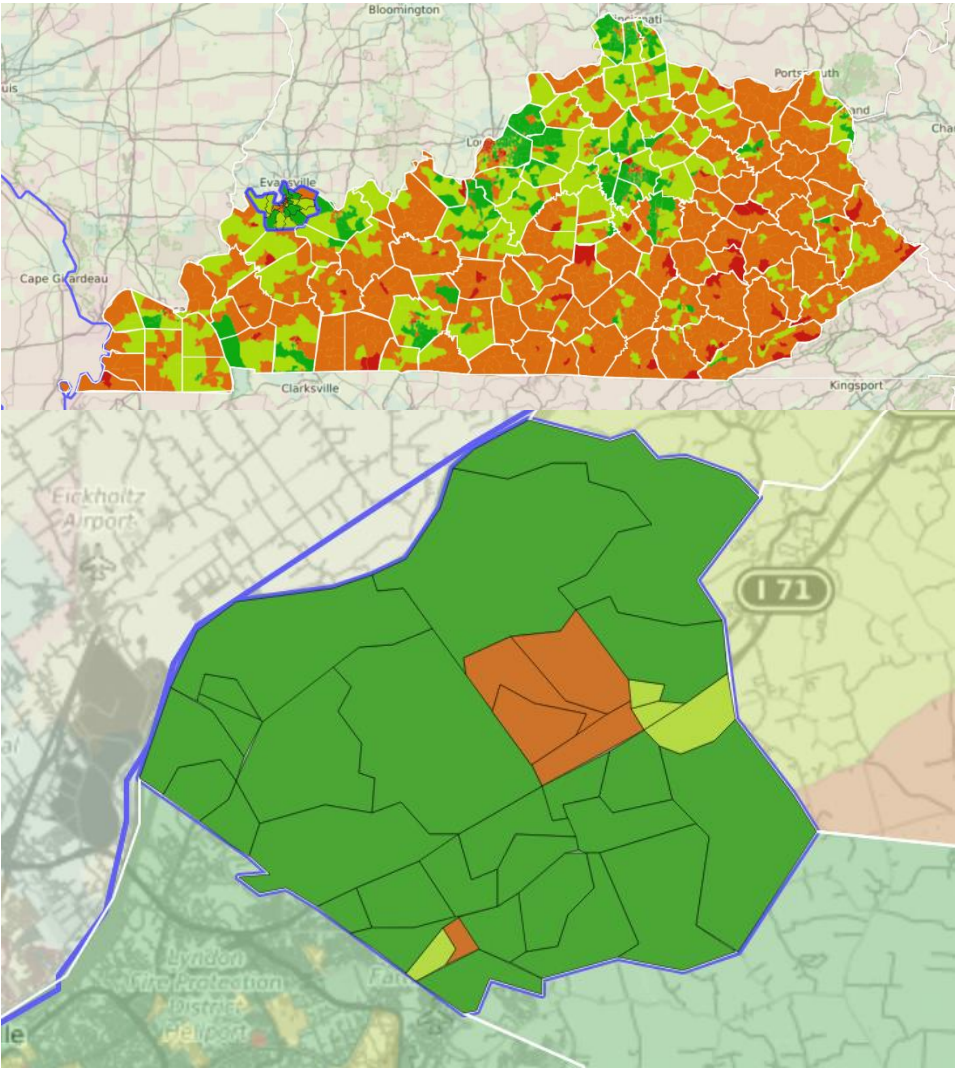
# HEALTH LITERACY ESTIMATES: A STATEWIDE COMPARISON

**Health literacy** is the ability to obtain, process, and understand information needed to make health decisions. Health literacy is not only a reflection of an individual's skills and abilities, but also how well health systems provide information and services.

The following estimates are projected in a geospatial analysis developed by the University of North Carolina at Chapel Hill. The health literacy estimates range from 177 to 280, with higher numbers indicating higher health literacy. Individuals living in communities with low literacy estimates may be more likely to have problems reading and understanding basic health information, like a pamphlet about a medical condition. Those living in neighborhoods with higher literacy scores may be able to understand basic health information, but could have difficulty with more complex text, such as documents describing medication side effects or insurance coverage.<sup>1</sup>

# HEALTH LITERACY ESTIMATES: A STATEWIDE COMPARISON

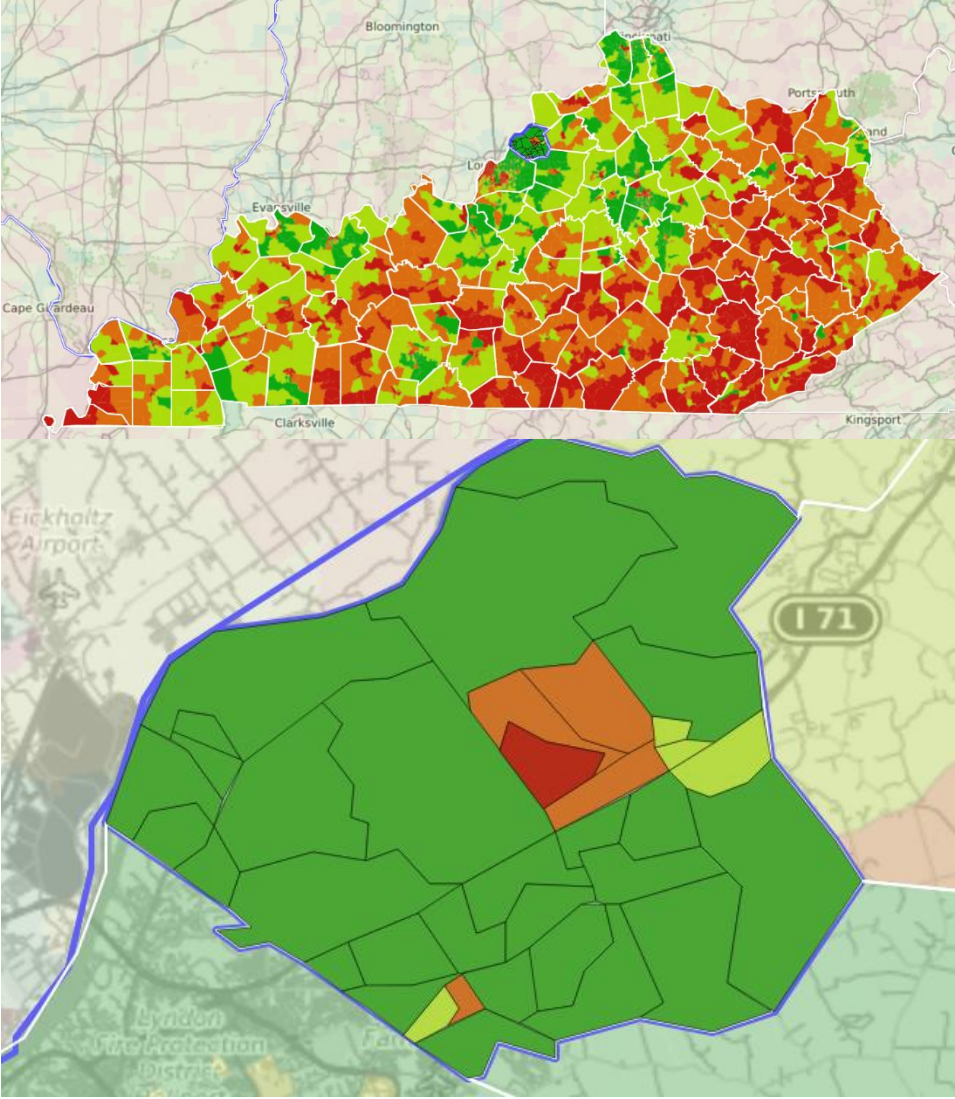
### State Quartiles



### Health Literacy Levels

- Quartile 4 (highest)
- Quartile 3
- Quartile 2
- Quartile 1 (lowest)

### National Quartiles



# HEALTH OUTCOMES

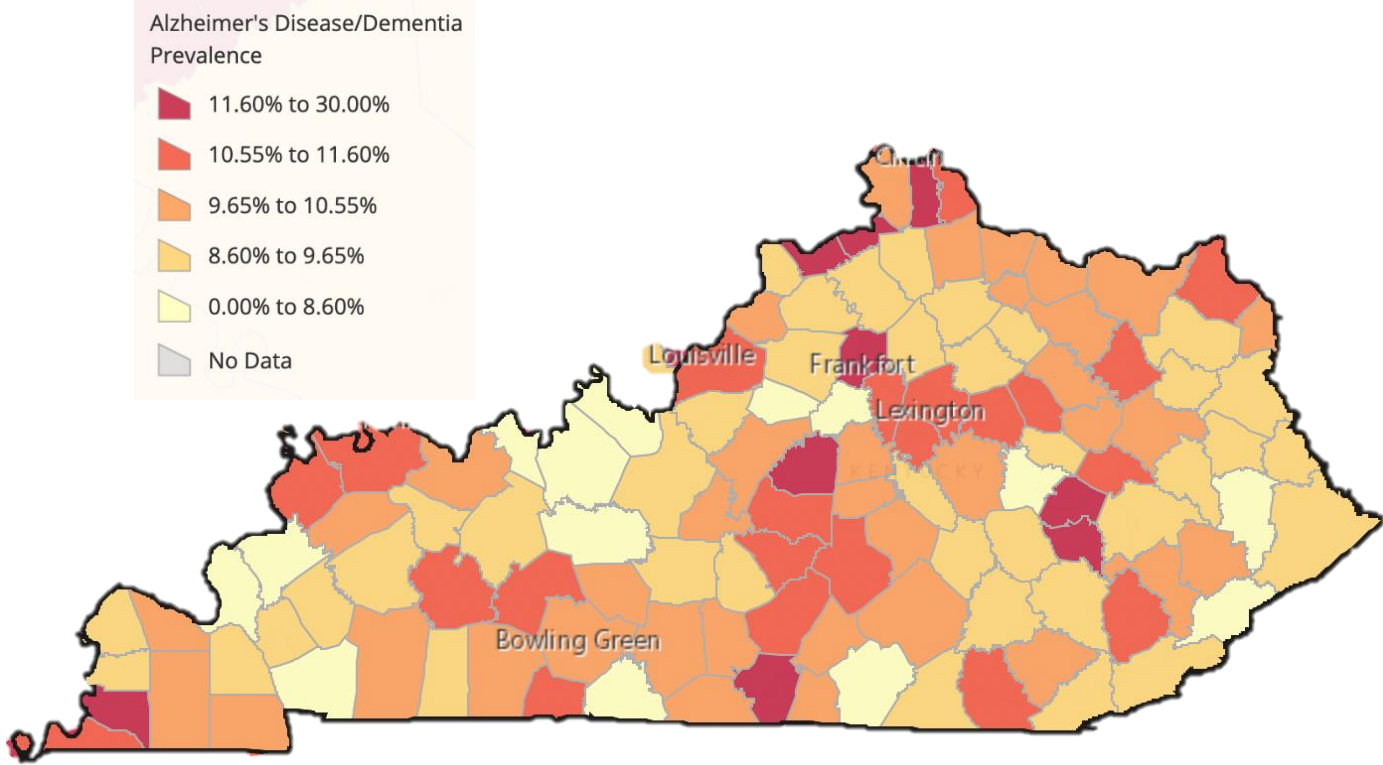


# MENTAL HEALTH AND ALZHEIMER'S DISEASE PREVALENCE

Mental health plays an important role in wellness across the lifespan. Mental health includes our emotional, psychological, and social well being. Discussion surrounding mental health resources and acceptance has increased in recent years, which provides a catalyst for meaningful change in Kentucky communities. Oldham County residents reported an average of 3.7 days of “poor mental health” in the past 30 days. Over the last decade, the ratio of citizens to mental health providers within Oldham County consistently decreased, possibly indicating an increased availability of resources.

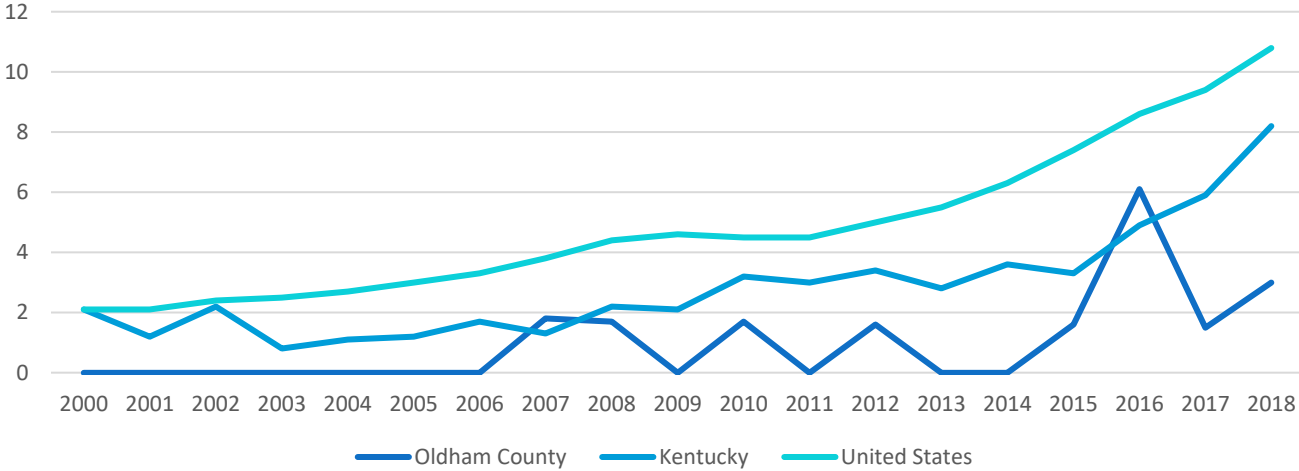
## Alzheimer's Disease

Alzheimer's Disease is one of the top 10 leading causes of death for Kentucky citizens.<sup>1</sup> In 2018, the average state prevalence rate for Alzheimer's was 10.26%, (10.78% nationally). In Oldham County, the prevalence was 10.21%. Variability in SDOH can contribute to chronic disease disparities among populations of all backgrounds, systematically limiting the health potential of some groups.

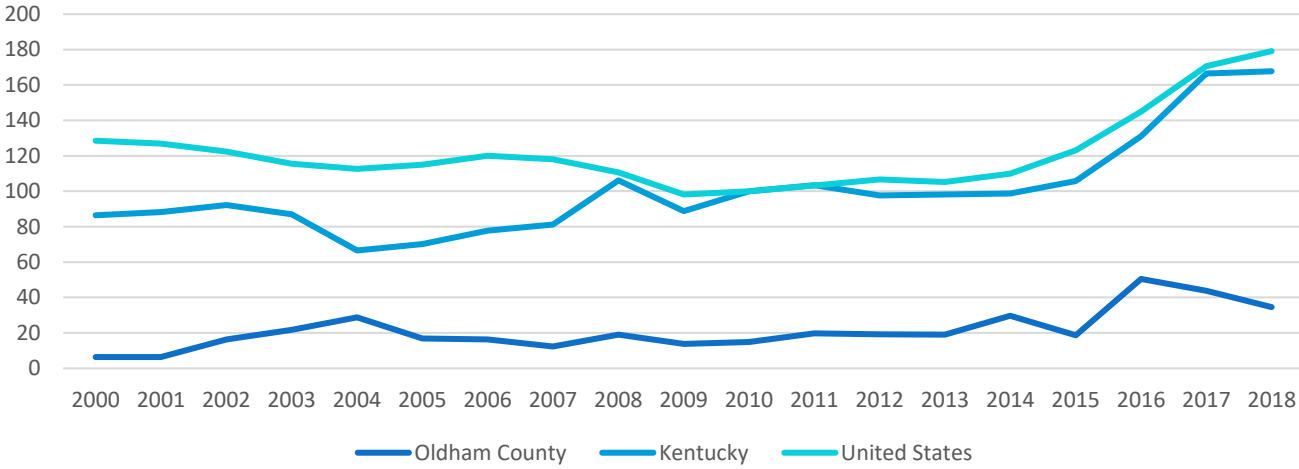


# SEXUALLY TRANSMITTED INFECTIONS

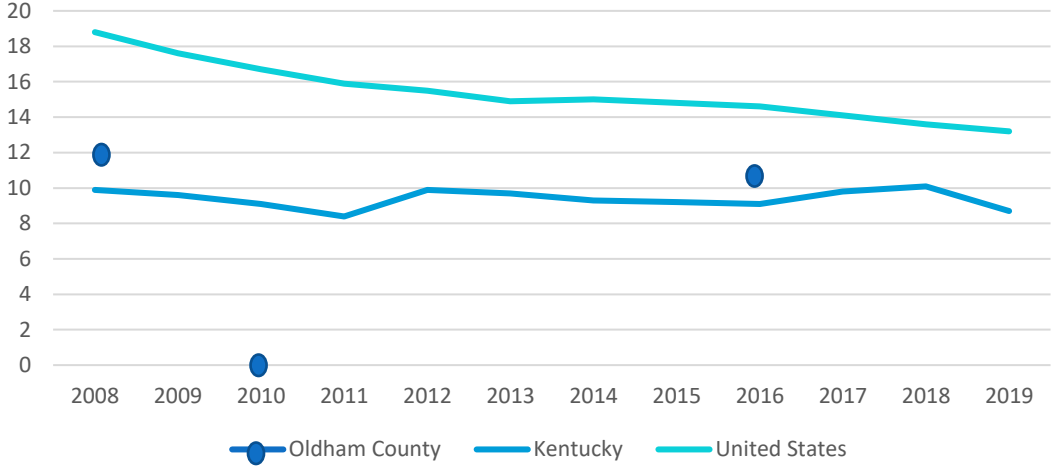
Rate of New Primary and Secondary Syphilis Cases by Residence



Rate of New Gonorrhea Cases by Residence



Rate of New HIV Diagnoses by Residence



Rates per 100,000

# ORAL HEALTH

Maintaining oral health and reducing barriers to care are essential to an individual’s health and well-being. Oral health impacts our ability to smile, eat, show emotion and communicate. Oral health can also directly affect an individual’s self-esteem or their school/work performance and attendance. Cavities (or tooth decay) are one of the most common chronic diseases in the United States.

About **1 in 5 (20%) children aged 5 to 11 years** and **1 in 7 (13%) adolescents aged 12 to 19 years** have at least one untreated decayed tooth. About **90% of individuals 20 and older** have had at least one cavity. On average, 34 million school hours are lost each year because of unplanned (emergency) dental care, and over \$45 billion in US productivity is lost each year due to untreated dental disease.

According to a statewide study conducted in 2016 by Delta Dental, Kentucky Youth Advocates and the UofL School of Dentistry, 1 in 2 children have experienced tooth decay in the Louisville Region, while 1 in 3 children have untreated tooth decay. Of those who completed the survey across Kentucky, more than half of parental respondents indicated their 3<sup>rd</sup> or 6<sup>th</sup> grader was eligible for free or reduced lunch. Those who were eligible for free or reduced lunch were more likely to have recently experienced a toothache, to have not visited a dentist in more than a year, to have untreated decay, and to have presence of previous decay.

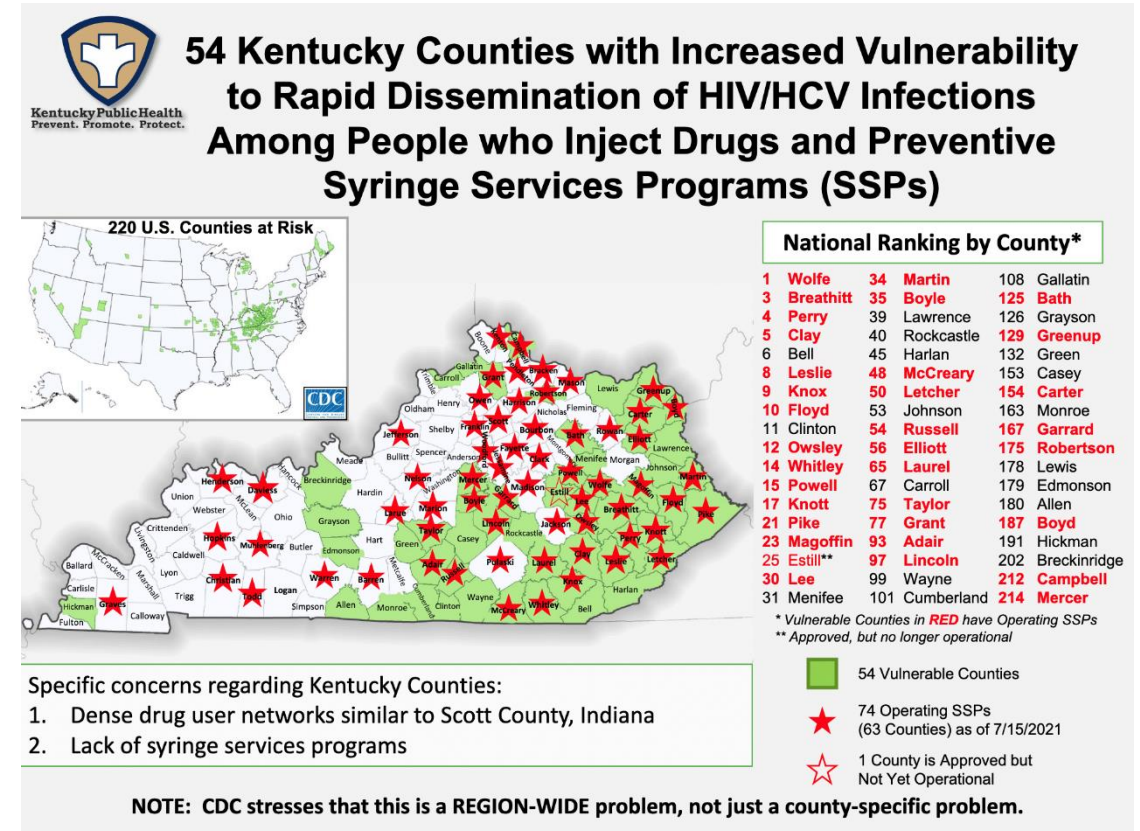
<b>Percentage of 3<sup>rd</sup> and 6<sup>th</sup> Graders with untreated tooth decay</b>	<b>2001</b>	<b>2016</b>	<b>Percent Changes</b>
<b>Louisville Region</b>	31%	37%	+6%
<b>Kentucky</b>	29%	41%	+12%

Making Smiles Happen: 2016 Oral Health Study of Kentucky’s Youth

Louisville Region includes: Bullitt, Jefferson, Oldham and Shelby Counties.

# SUBSTANCE ABUSE

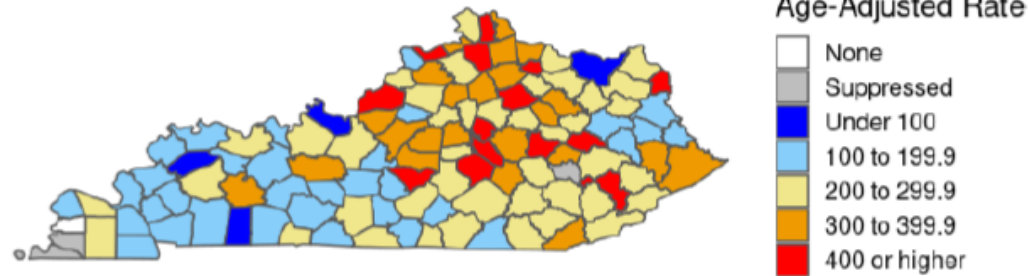
Substance use and abuse continues to negatively impact Kentucky communities year to year. Syringe Services Programs (SSPs) and other public health programming have been implemented across the Commonwealth to assist citizens access the tools they need to make safer, healthier decisions.



Drug Overdose Deaths that Occurred in Kentucky (Kentucky and non-Kentucky Residents Who Died in Kentucky)	2012	2013	2014	2015	2016	2017	2018	2019	2020
Oldham	<5	6	<5	15	10	7	9	16	8
Kentucky	1032	1003	1069	1238	1352	1468	1247	1316	1964

# SUBSTANCE ABUSE

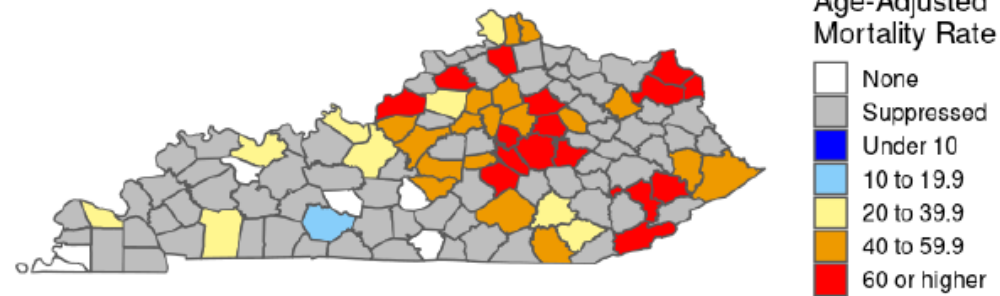
Age-Adjusted Rate of ED Visits for Nonfatal Drug Overdose by Kentucky County of Residence, 2020



Counties with the highest rates for emergency department (ED) visits:

- 1) Estill County with 581.7 visits per 100,000 residents (n=73)
- 2) Grant County with 580.9 visits per 100,000 (n=138)
- 3) Taylor County with 551.0 visits per 100,000 residents (n=128)

Age-Adjusted Drug Overdose Mortality Rate by Kentucky County of Residence, 2020



Counties with the highest mortality rates:

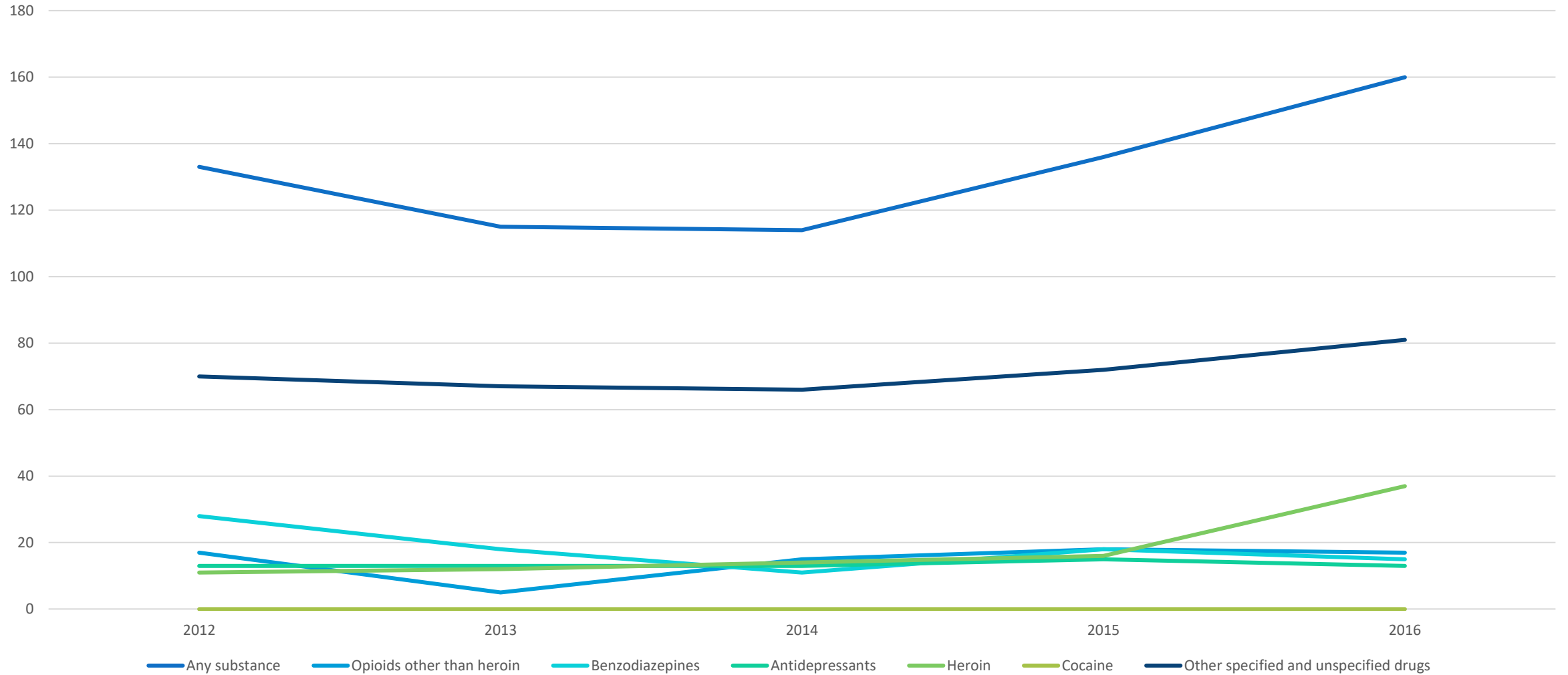
- 1) Knott County with 121.1 deaths per 100,000 residents (n=19)
- 2) Clark County with 104.3 deaths per 100,000 residents (n=35)
- 3) Bourbon County with 98.4 deaths per 100,000 residents (n=18)

Rates are expressed as the number of events per 100,000 residents. Rates based on counts less than 10 are suppressed in accordance with state data management policy. Rates based on counts less than 20 are unstable and should be interpreted with caution.

Produced by the Kentucky Injury Prevention and Research Center as bona fide agent for the Kentucky Department for Public Health, July 2021. Data are provisional and subject to change.

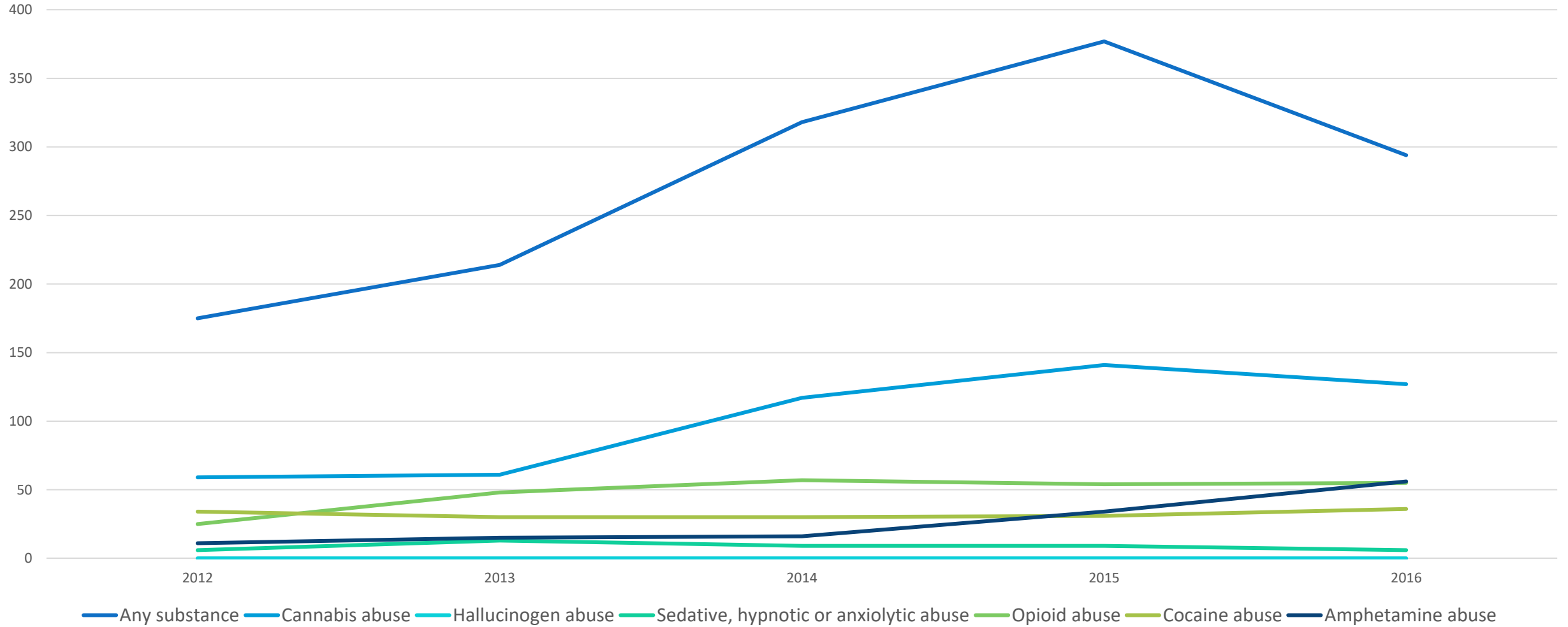
# SUBSTANCE ABUSE

## Acute Drug Poisoning (Overdose), 2012-2016



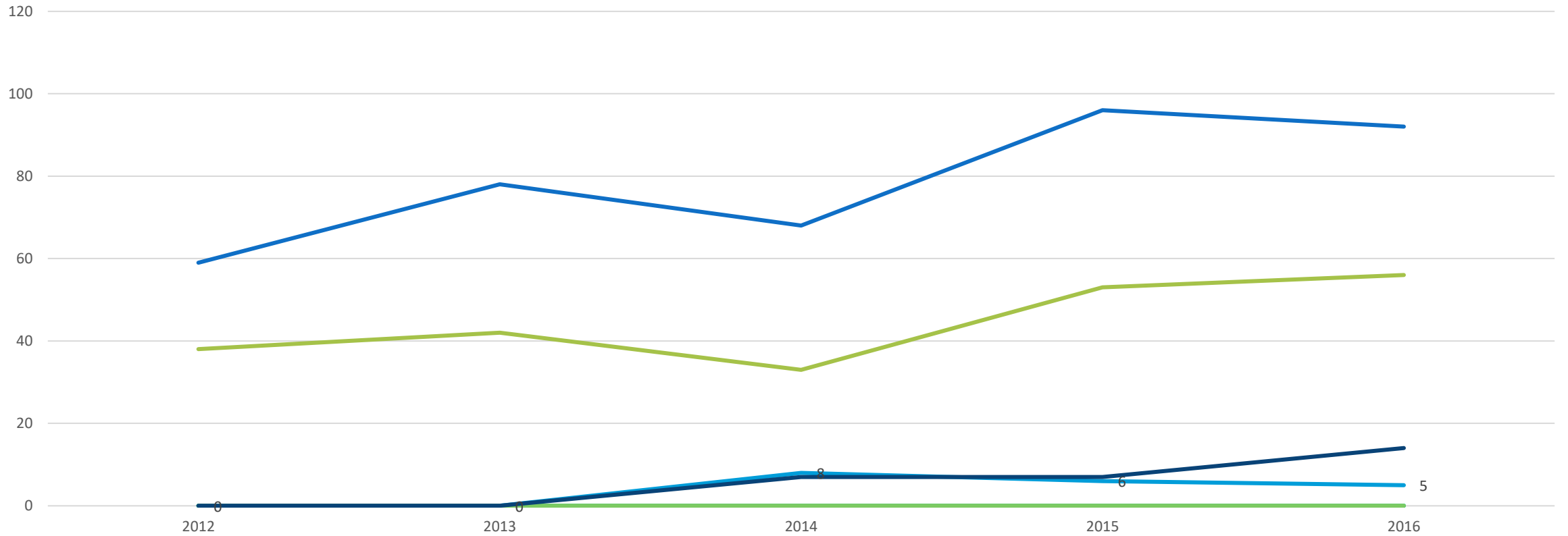
# SUBSTANCE ABUSE

Nondependent abuse of drugs (excluding overdoses)



# SUBSTANCE ABUSE

Drug Dependence (excluding overdoses)

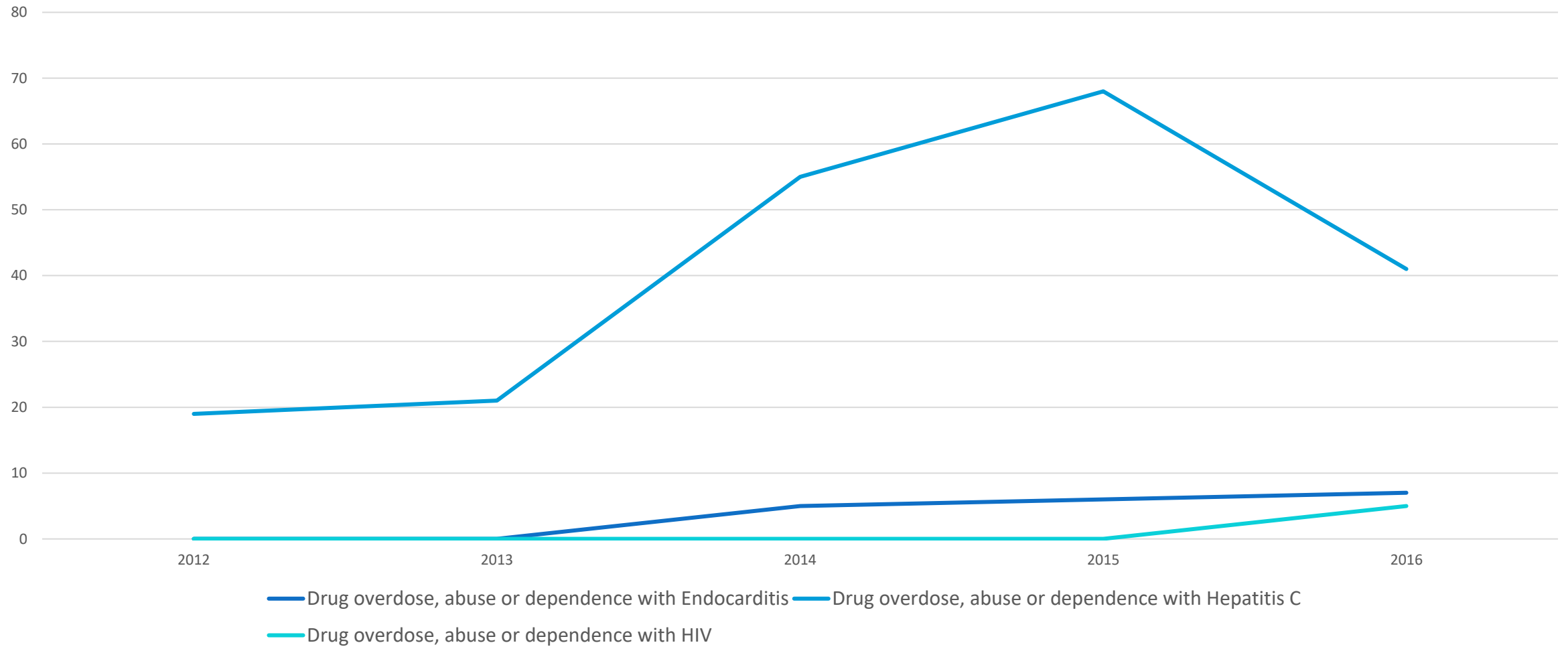


- Any abuse
- Cannabis dependence (suppressed)
- Hallucinogen dependence
- Sedative, hypnotic or anxiolytic dependence
- Amphetamine and other psychostimulant dependence
- Cocaine dependence (suppressed)
- Opioid-type dependence



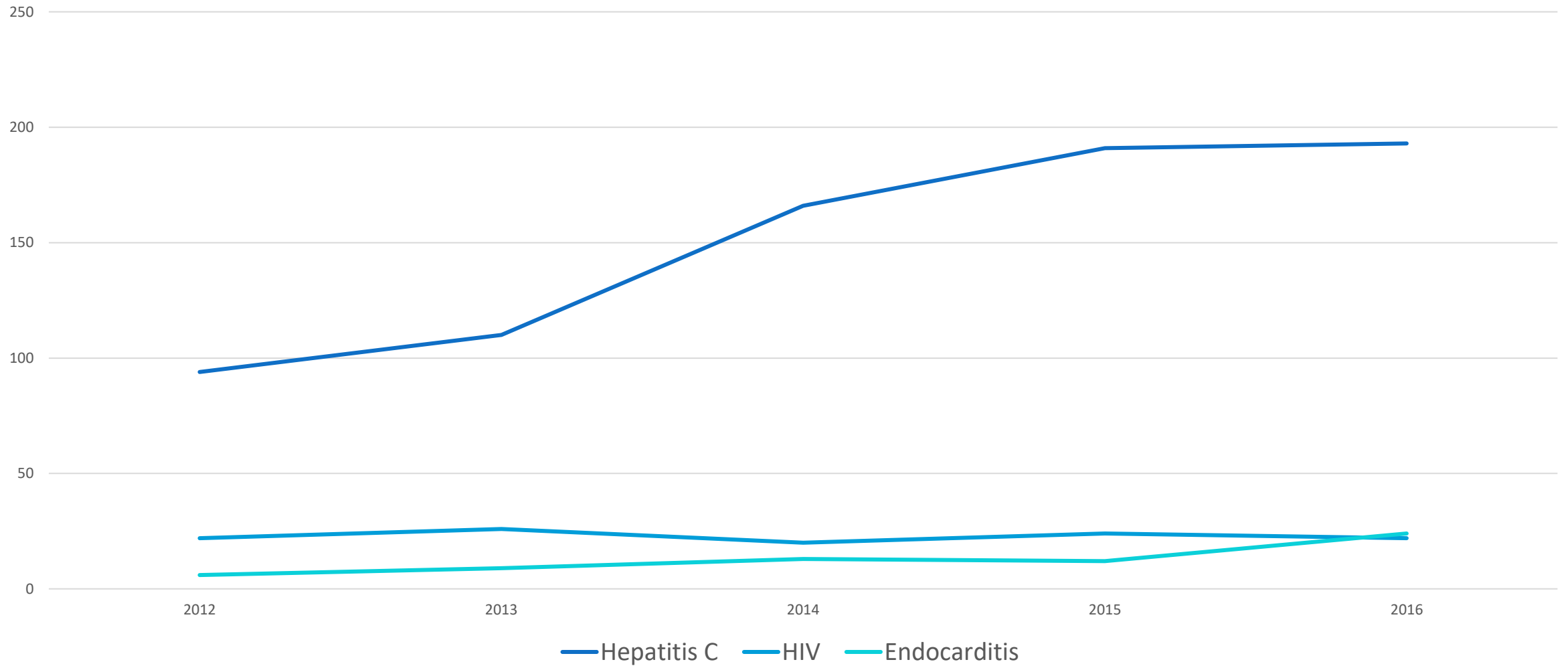
# SUBSTANCE ABUSE

Comorbid infectious disease and drug overdose, abuse and dependence



# SUBSTANCE ABUSE

Infectious Disease (with or without comorbid drug overdose, abuse or dependence)



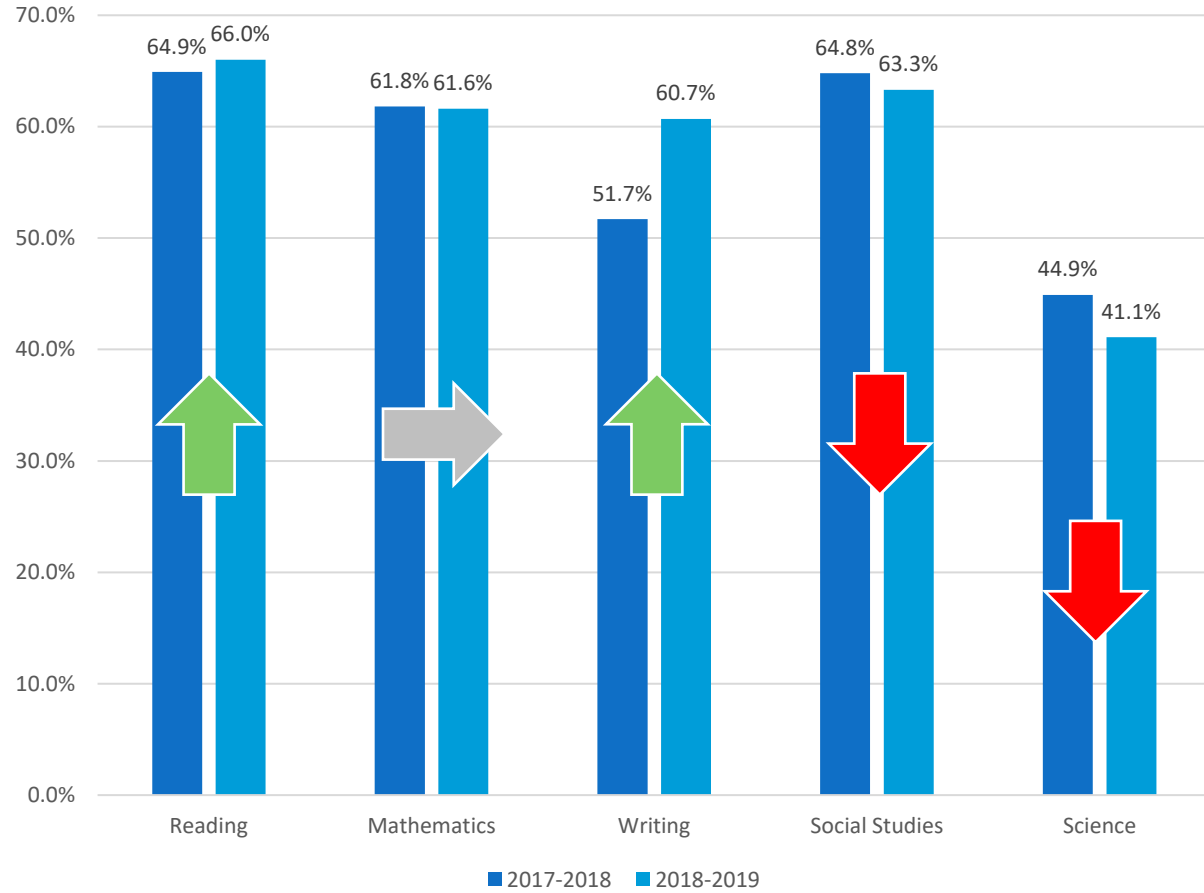
Age-adjusted Cancer Incidence (All Sites), 2014-2018			
Site	Population at Risk	Age-adjusted Rate	
		Oldham	Kentucky
All Sites	326870	597.8	559.5
Prostate (males only)	172692	133.2	103.6
Breast	326870	88.0	81.7
Lung and Bronchus	326870	62.5	88.3
Colon and Rectum	326870	54.6	50.4
Melanoma of the Skin	326870	76.0	47.8
Urinary Bladder, invasive and in situ	326870	22.0	22.2
Corpus Uteri (females only)	154178	24.3	27.2
Kidney and Renal Pelvis	326870	22.4	21.4
Non-Hodgkin Lymphoma	326870	19.1	19.6
Miscellaneous	326870	21.7	18.2

# EDUCATION ACCESS AND QUALITY

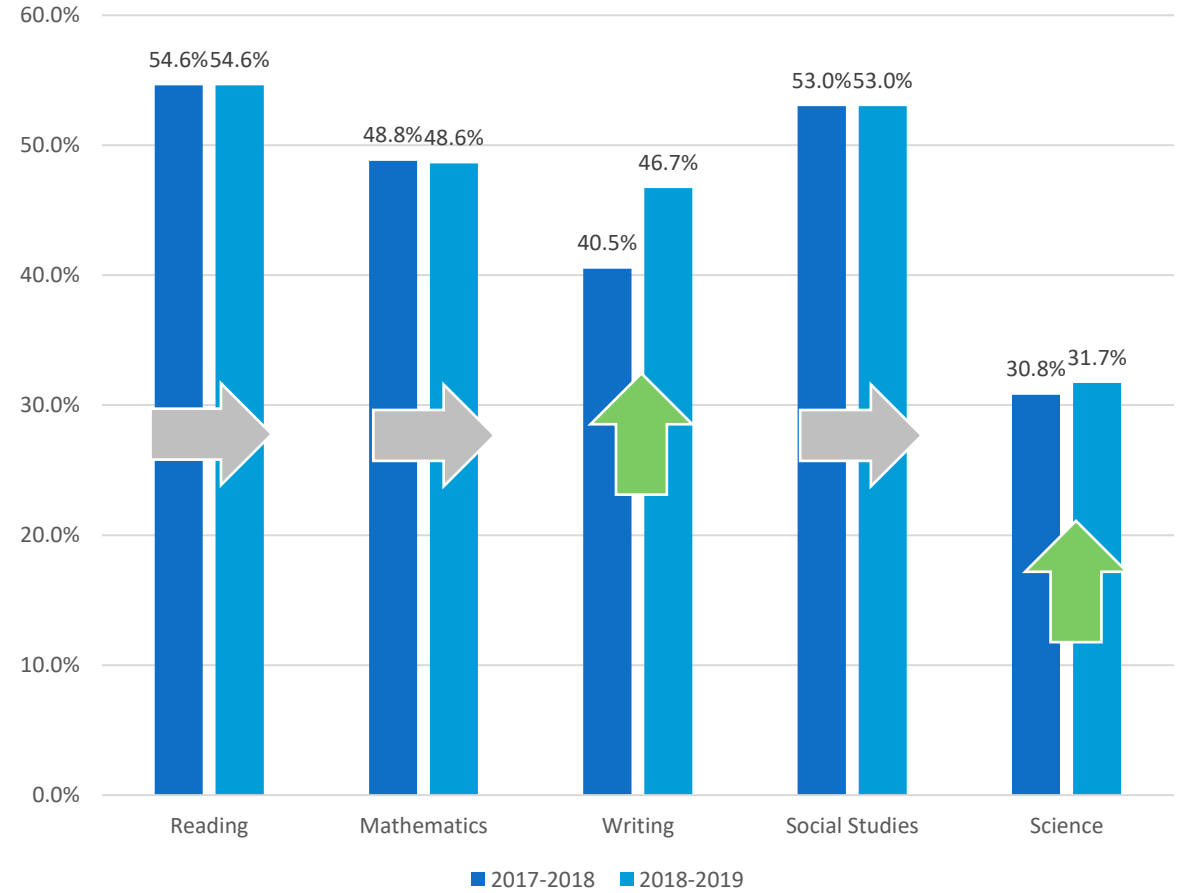
# PROFICIENCY RATES FOR KEY SUBJECTS - ELEMENTARY



## DISTRICT



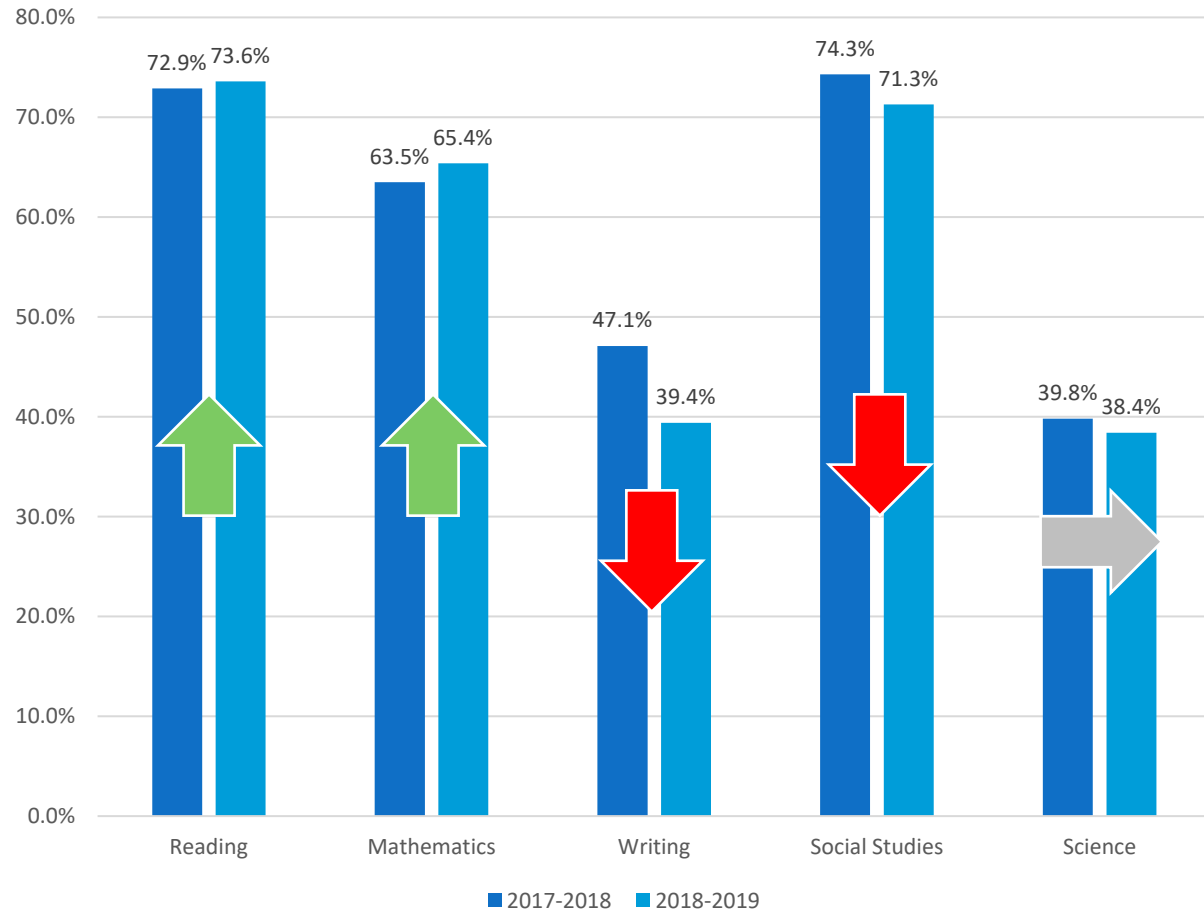
## STATE



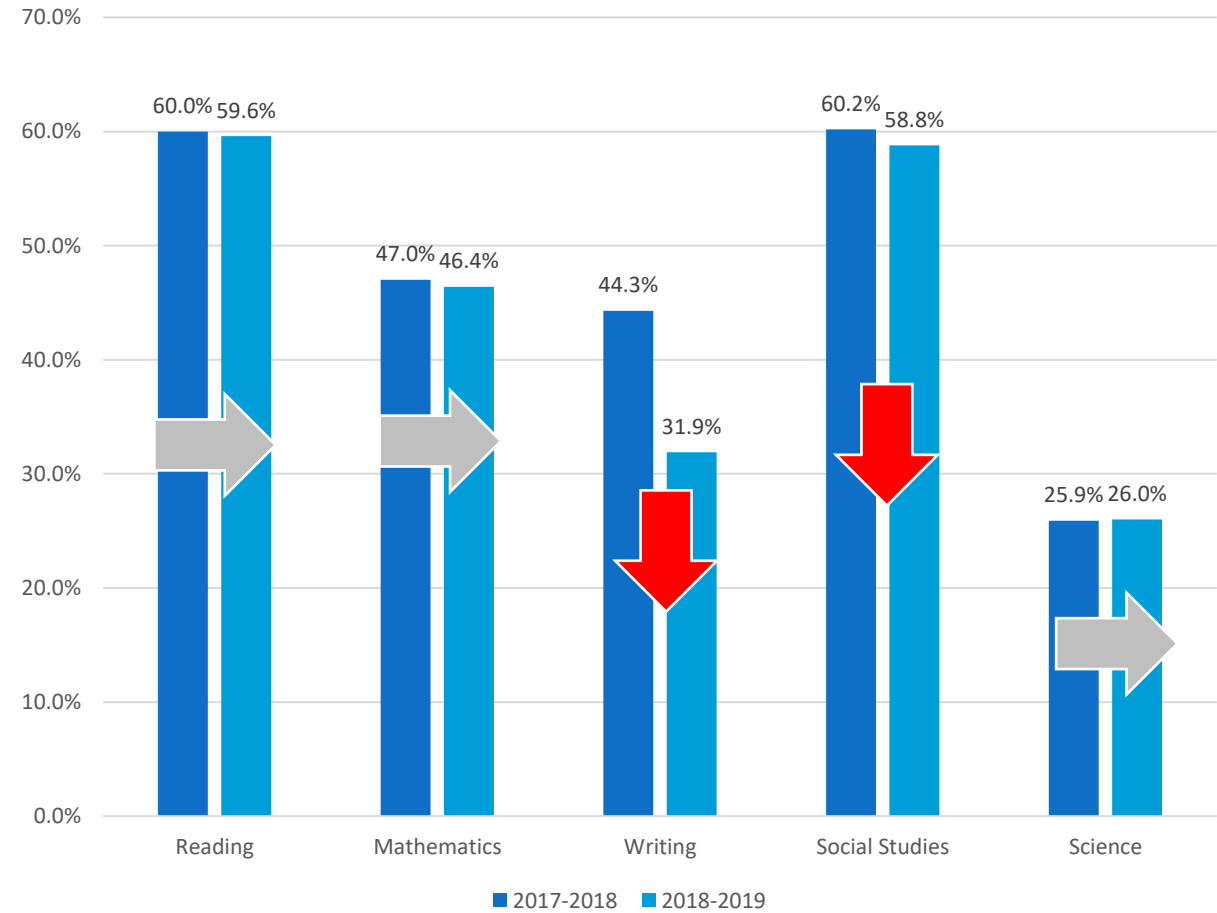
# PROFICIENCY RATES FOR KEY SUBJECTS - MIDDLE



## DISTRICT



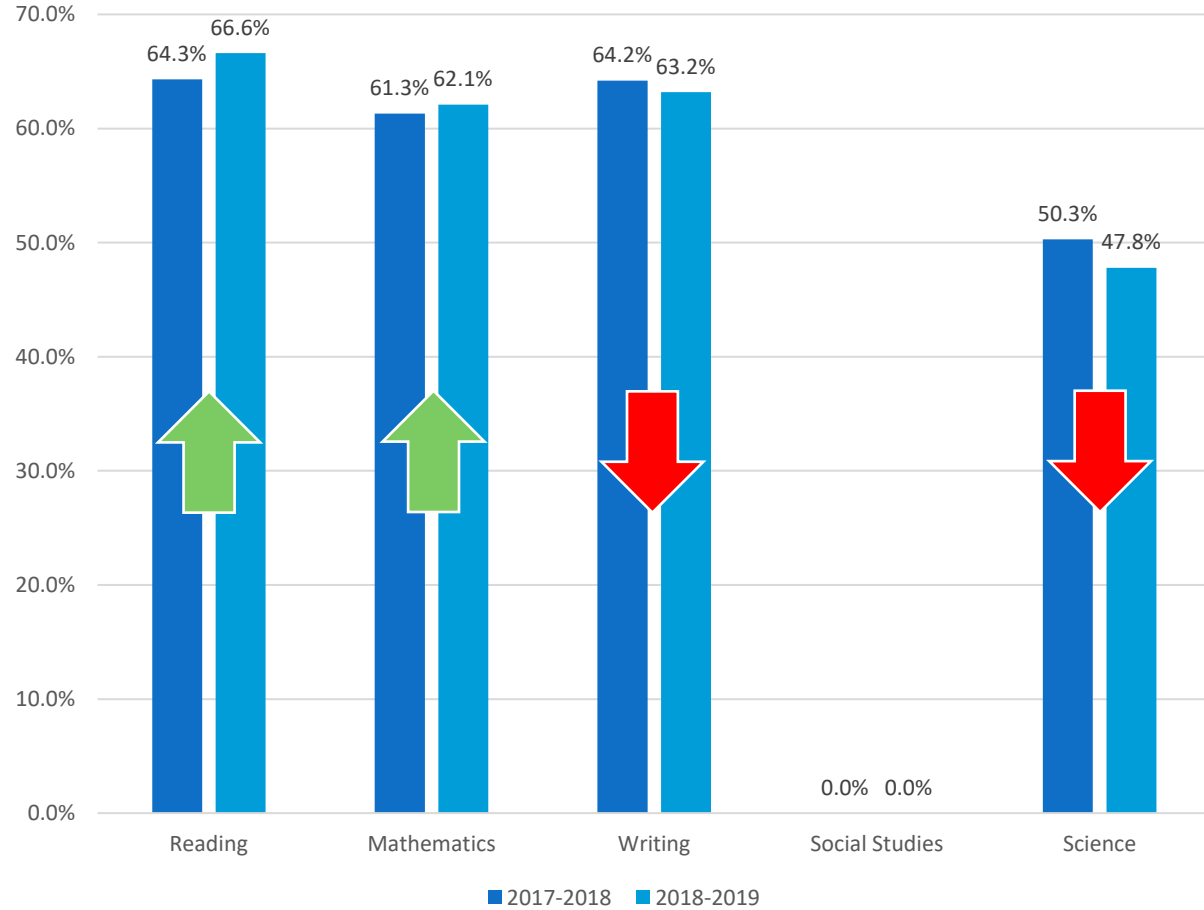
## STATE



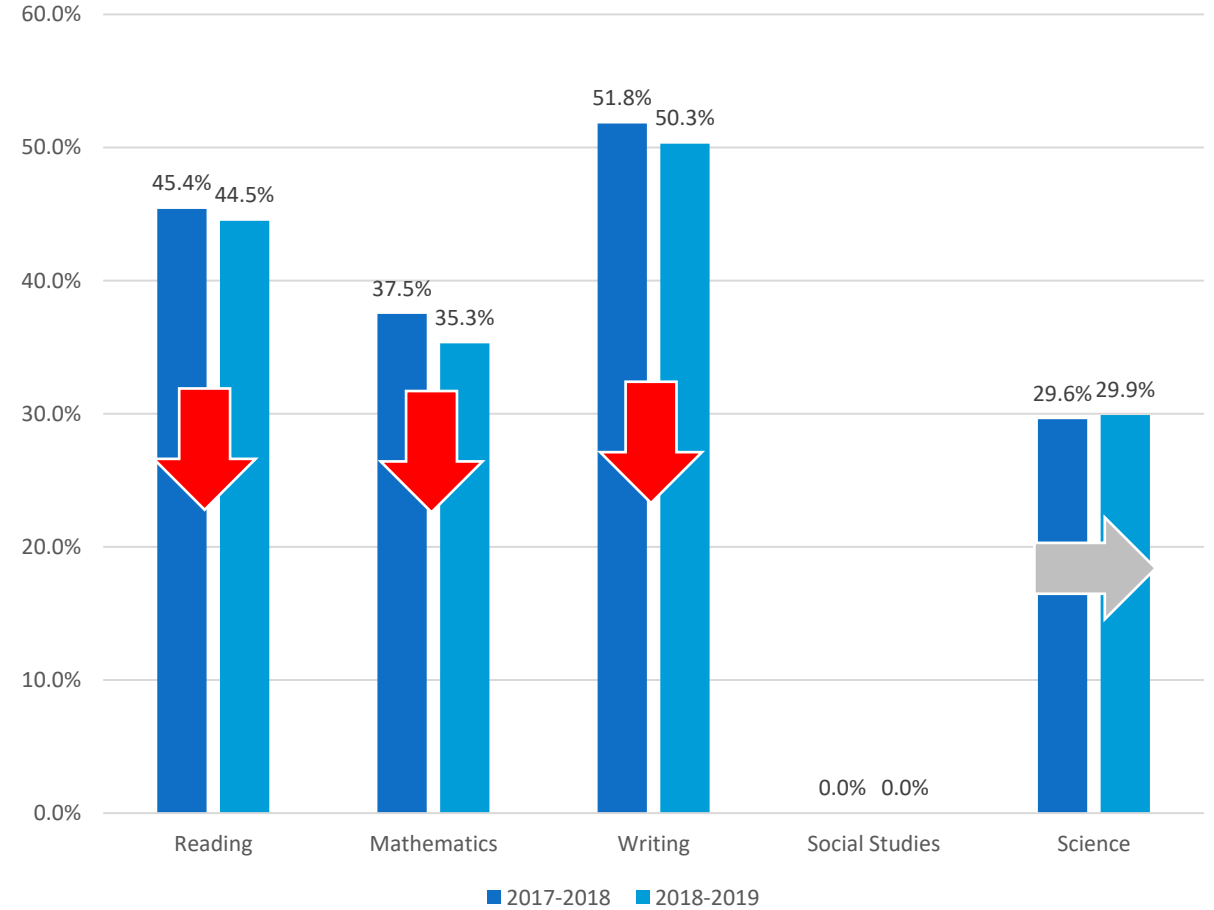
# PROFICIENCY RATES FOR KEY SUBJECTS - HIGH



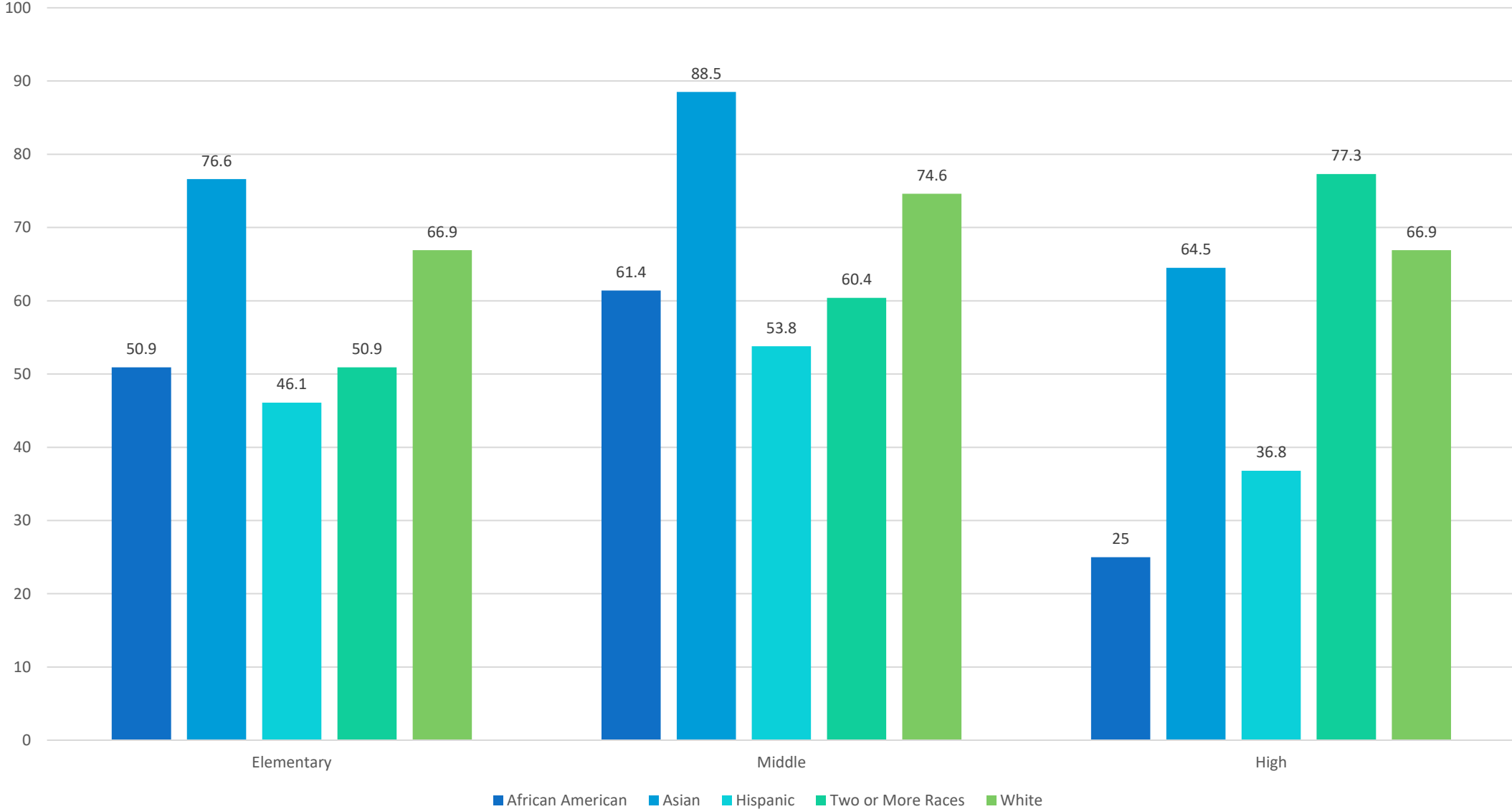
## DISTRICT



## STATE

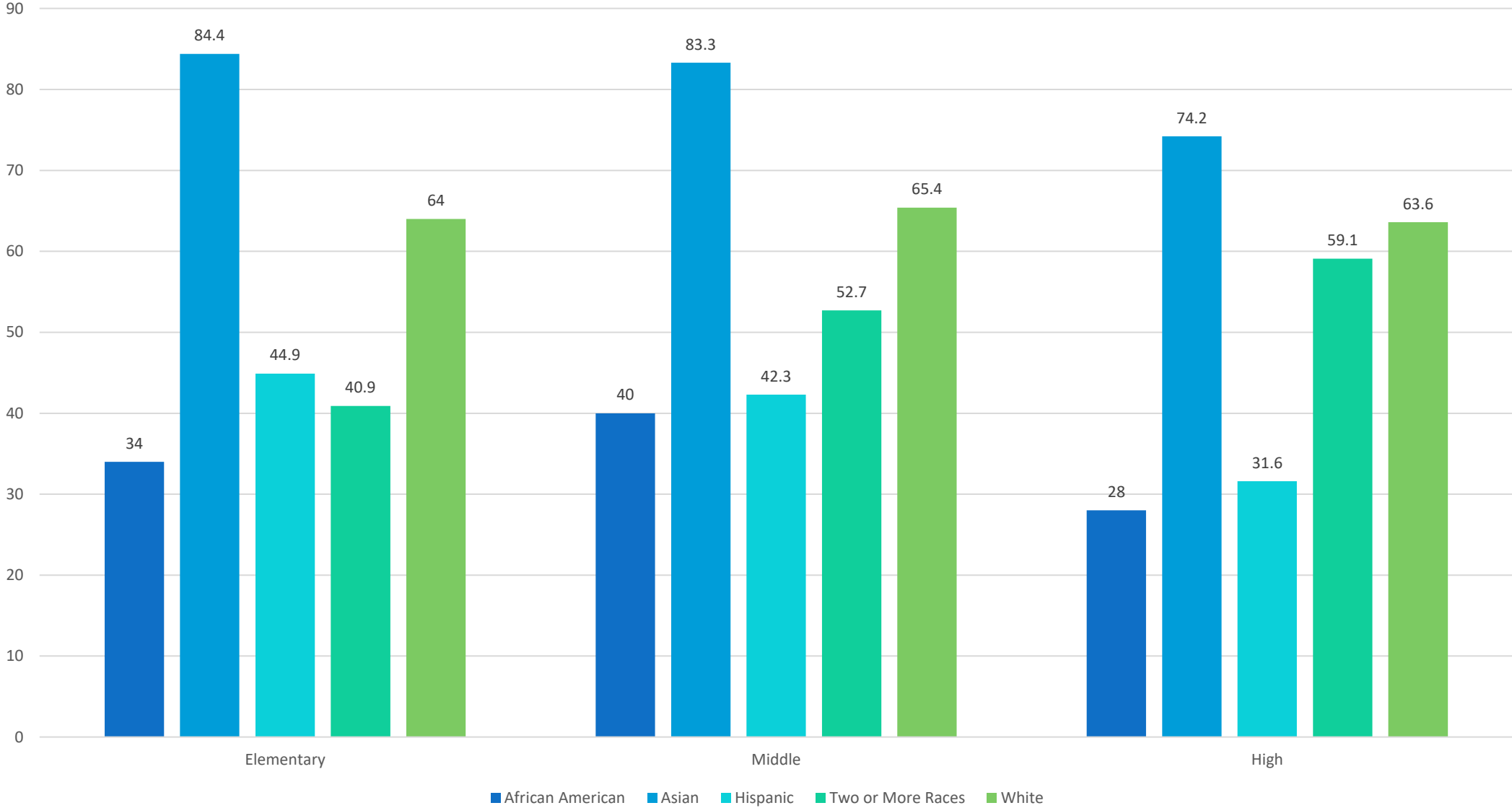


# PROFICIENCY RATES FOR KEY SUBJECTS - ENGLISH

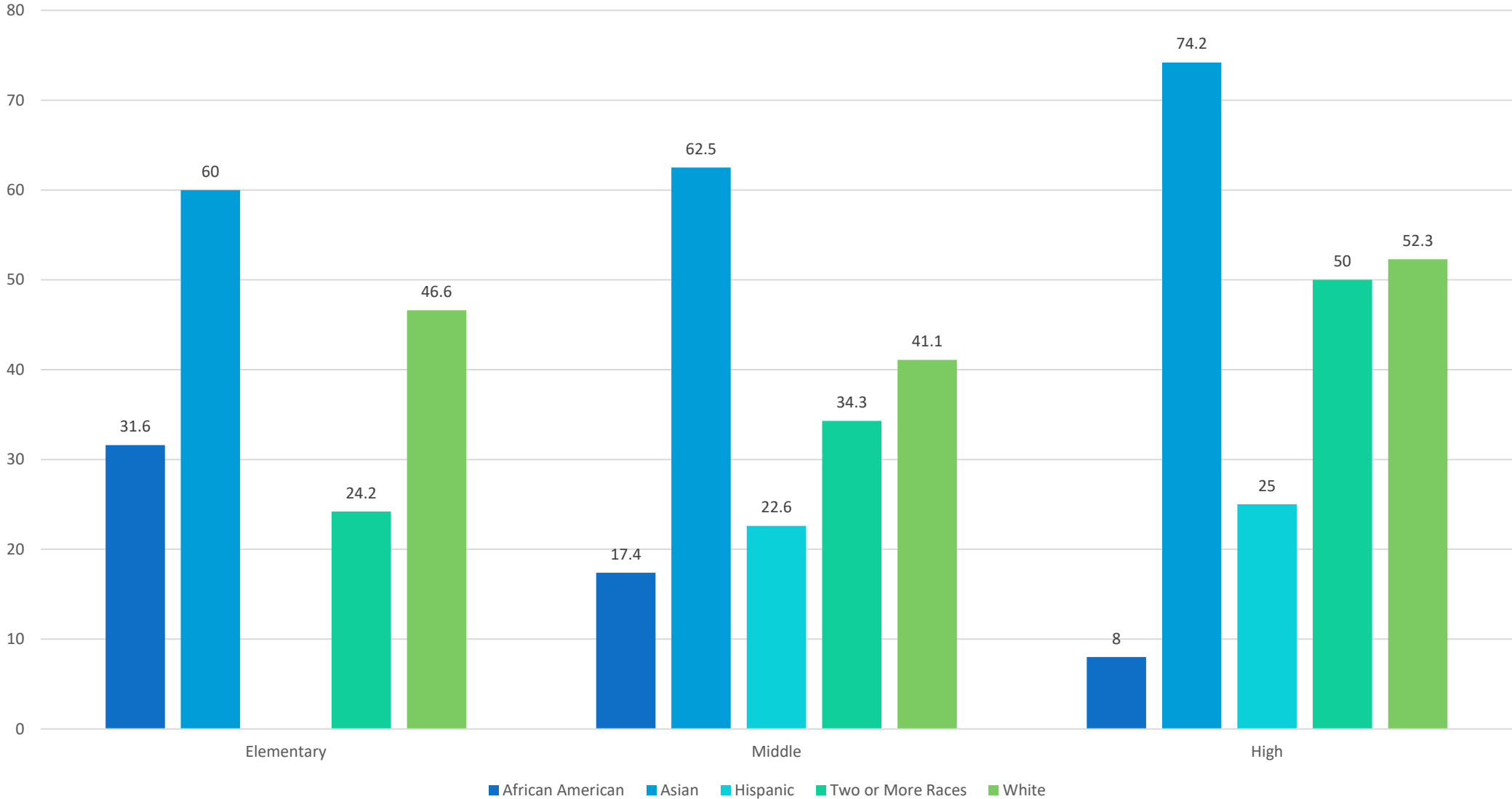




# PROFICIENCY RATES FOR KEY SUBJECTS - MATH

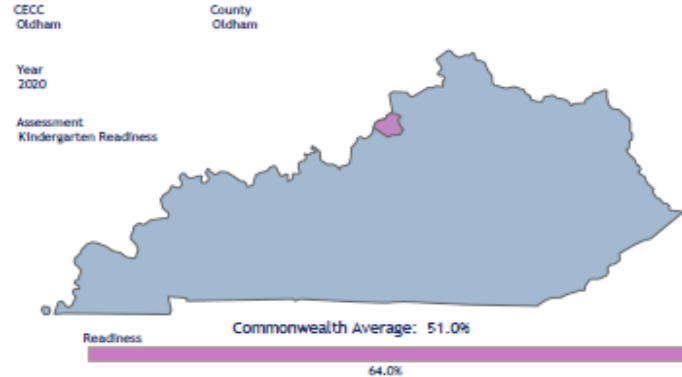


# PROFICIENCY RATES FOR KEY SUBJECTS - SCIENCE



# EARLY CHILDHOOD DEVELOPMENT - 2020

## Kindergarten Readiness and 3rd Grade Measures



## How Does Kindergarten Readiness Relate to 3rd Grade Test Scores?

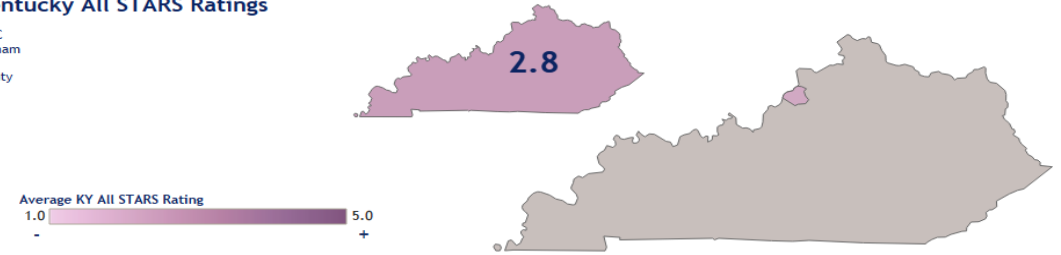
County Oldham  
Year 2016  
Demographic Gender  
Group All  
Choose 3rd Grade Test Math

In 2016, Oldham County had redactions for free- and reduced price lunch status, race and ethnicity.



## Kentucky All STARS Ratings

CECC Oldham  
County All



## KY All STARS Providers/Sites

KY All STARS Rating	Child Care		Public Preschool
	Certified	Licensed	Sites: 1 Total Capacity: Not Collected
5			
4		Providers: 6 Total Capacity: 811	
3		Providers: 3 Total Capacity: 564	
2	Providers: 2 Total Capacity: 12	Providers: 6 Total Capacity: 510	
1		Providers: 15 Total Capacity: 2,002	
Not Participating		Providers: 1 Total Capacity: 151	

## Rating by Provider/Site

County	Provider/Site	Type	KY All STARS Rating	Capacity
Oldham	A Wise Choice For Kids	Child Care	2	49
	Bluebird Cottage School	Child Care	1	12
	Buckner Elementary "Bear Care" Program	Child Care	3	200
	Cadence Academy Preschool	Child Care	1	220
	Camden Station	Child Care		

## Early Childhood Programs

Early Care and Education Program Enrollments					
Self-contained Head Start or Early Head Start	Multiple enrollments in Head Start and Preschool or blended	Self-contained Preschool	Kindergarten		
9,374	6,359	23,387	50,306		
Enrollments		Selected Counties		Kentucky	
Disability	16%	Number of Children	0-2 Year-Olds 163,664 (3.7%)	Number of Children	0-2 Year-Olds 163,664 (3.7%)
	23%		3-4 Year-Olds 111,748 (2.5%)		3-4 Year-Olds 111,748 (2.5%)
	47%		5-6 Year-Olds 111,045 (2.5%)		5-6 Year-Olds 111,045 (2.5%)
Income Eligible	79%	Children Under 6 years old living below:	100% Poverty 85,969 (26.8%)	Children Under 6 years old living below:	100% Poverty 85,969 (26.8%)
	19%		150% Poverty 125,740 (39.3%)		150% Poverty 125,740 (39.3%)
	40%		200% Poverty 160,321 (50.0%)		200% Poverty 160,321 (50.0%)
Other & Over Income	5%	Households with English not primary language	103,484 (6.0%)	Households with English not primary language	103,484 (6.0%)
	57%	Births to girls 15-19 years old (per 1,000)	3,801 (27.3)	Births to girls 15-19 years old (per 1,000)	3,801 (27.3)
	13%	Preterm babies (born before 37 weeks of pregnancy)	6,099 (11.3%)	Preterm babies (born before 37 weeks of pregnancy)	6,099 (11.3%)

## Special Supplemental Nutrition Program for Women, Infants, and Children (WIC)

Children receiving WIC: 510

## Families served by the First Steps and the Health Access Nurturing Development Services (HANDS) programs

HANDS: 30

First Steps: 174

## Child Care Assistance Program (CCAP) Count

Children Served: 26,450

Families Served: 16,398

# SOCIAL AND COMMUNITY CONTEXT

# SOCIAL AND COMMUNITY CONTEXT

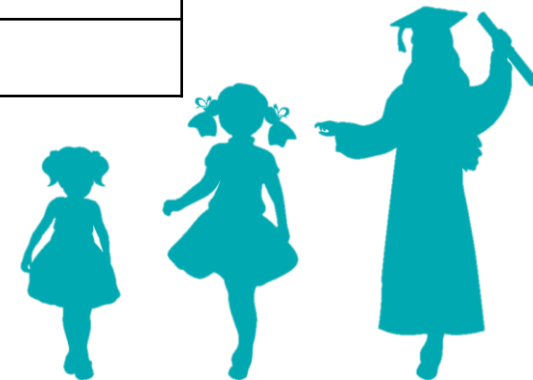
Social and Community Context refers to an individual or group of individual's ability to develop relationships and thrive where they live, play, learn, and work. The focus of social and community efforts can be:

- Cohesion amongst community members
- Civic participation
- Discrimination
- Incarceration
- Conditions of the workplace
- Transitions to Adult Life
- Resources for LGBTQ\*

# TRANSITION TO ADULT LIFE

How prepared are students for what comes next? The Kentucky Department for Education (KDE) and OC Board of Education track the percentage of high school graduates from the previous school year's graduating class that are working, enrolled in college, enrolled in technical training or serving in the military within six months of graduation.

Group	Count	Percent of Students
College	761	74.6%
Technical Training	27	2.6%
Military	25	2.5%
Working	129	12.6%
Work-School Combination	51	5%
Other	27	2.6%



# COMMUNITY LIVING

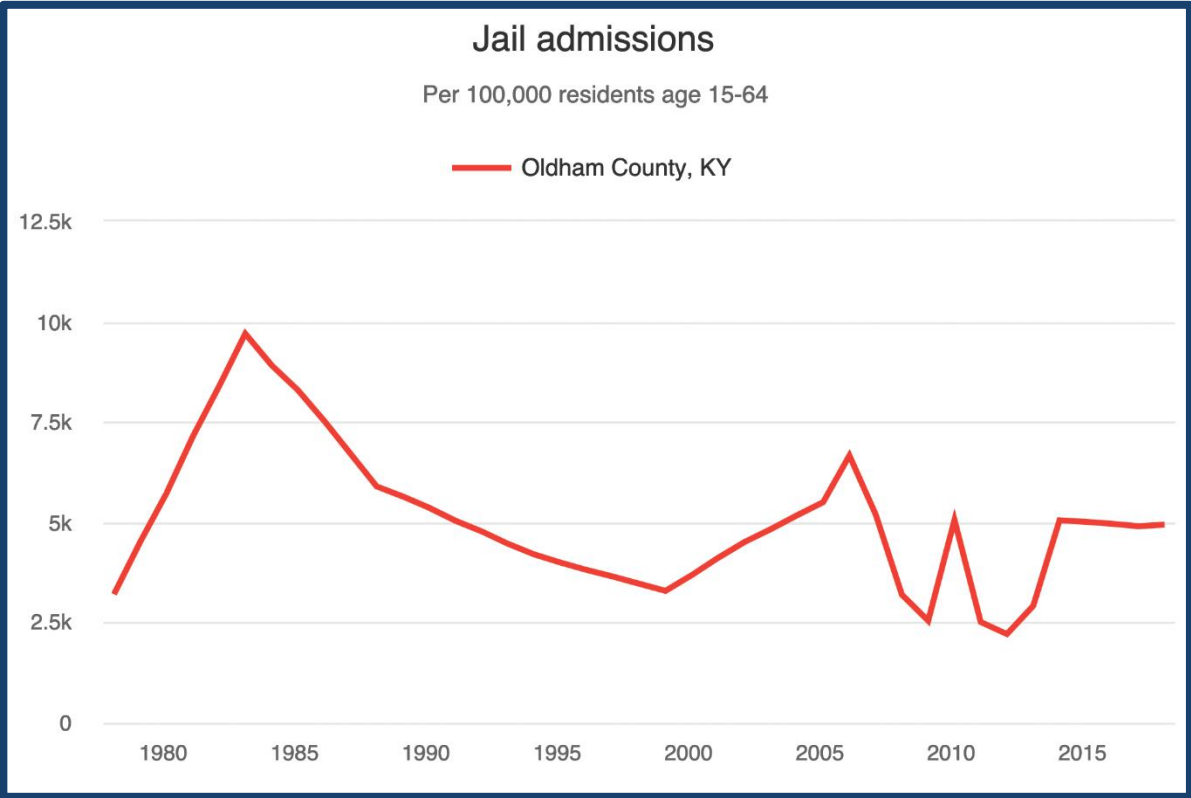
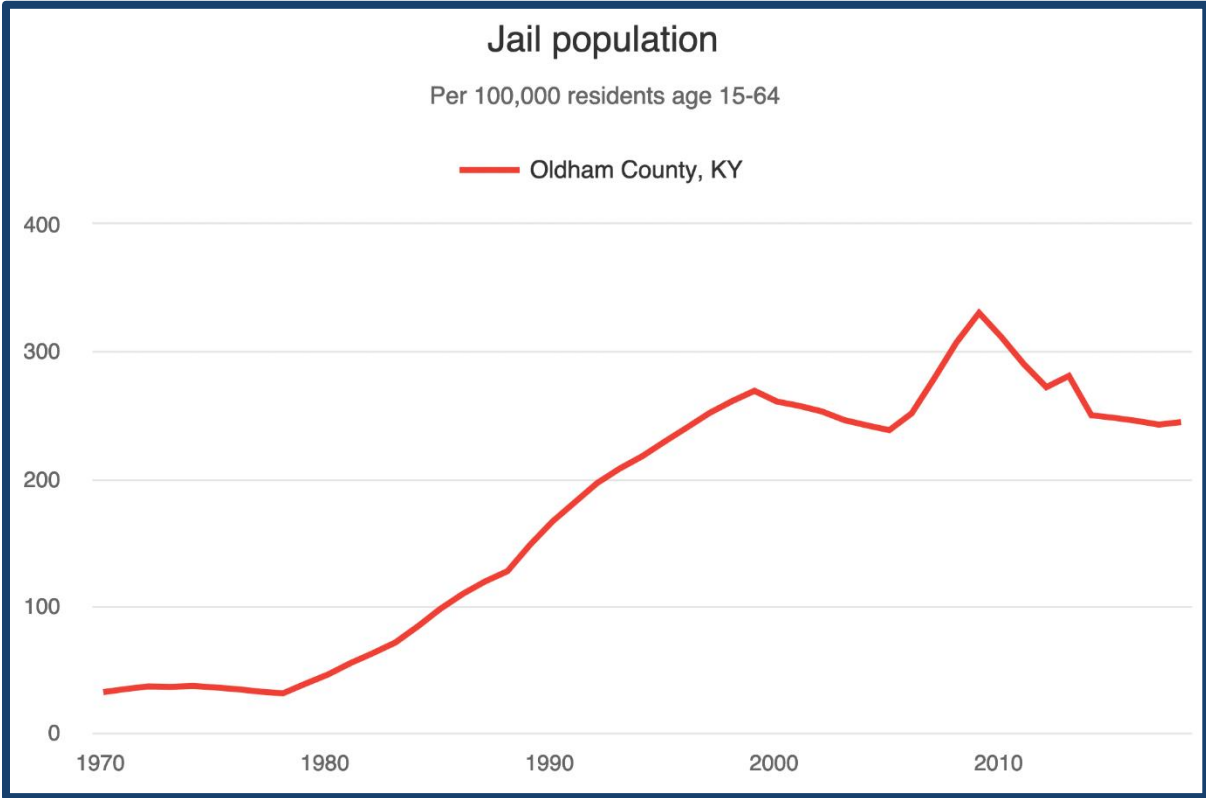
Racial/ethnic residential segregation refers to the degree to which two or more groups live separately from one another in a geographic area. The index of dissimilarity is a demographic measure of the evenness with which two groups (Black and White residents, in this case) are distributed across the component geographic areas (census tracts, in this case) that make up a larger area (counties, in this case).

The residential segregation index ranges from 0 (complete integration) to 100 (complete segregation). The index score can be interpreted as the percentage of either Black or White residents that would have to move to different geographic areas in order to produce a distribution that matches that of the larger area.

	<b>Oldham</b>	<b>Kentucky</b>
<b>Residential Segregation (Black/White), 2015-2019</b>	32	7-93
<b>Residential Segregation (Non-white/White), 2015-2019</b>	21	1-70

County Health Rankings, 2015-2019

# INCARCERATION RATES



Vera Institute of Justice, 2018



# PRISON DATA – KENTUCKY STATE REFORMATORY (2019)

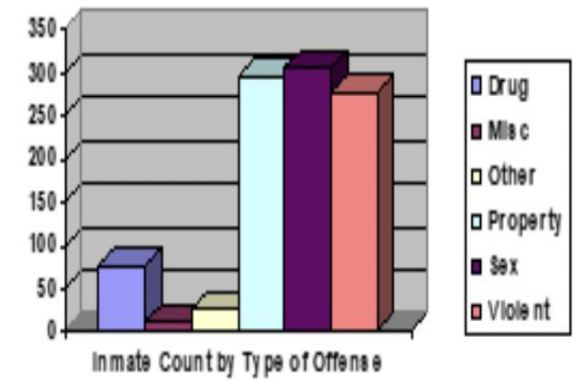
## Kentucky State Reformatory

### Demographic Data

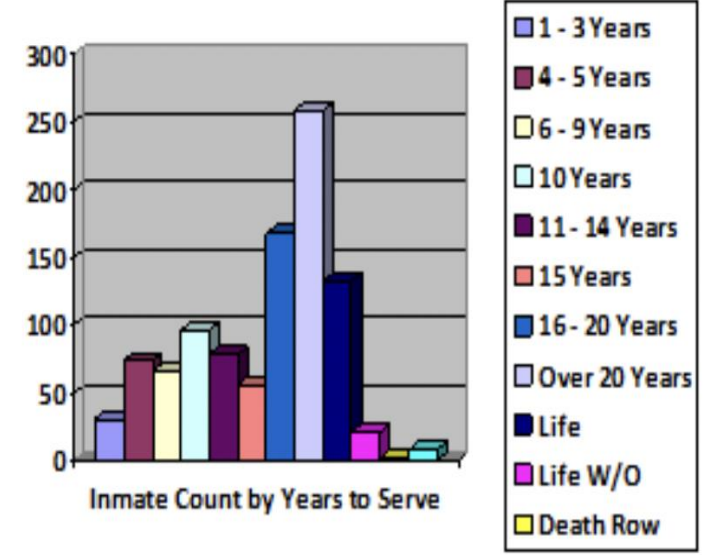
RACE	COUNT	PERCENTAGE
White	742	75.10%
Black	214	21.66%
Other	32	3.24%
Total	988	100.00%



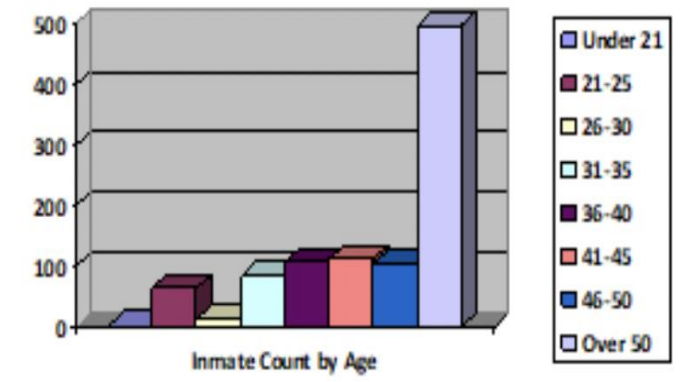
TYPE OF OFFENSE	COUNT	PERCENTAGE
Drug	75	7.59%
Misc	9	0.91%
Other	26	2.63%
Property	296	29.96%
Sex	304	30.77%
Violent	278	28.14%
Total	988	100.00%



YEARS TO SERVE	COUNT	PERCENTAGE
1 - 3 Years	30	3.04%
4 - 5 Years	74	7.49%
6 - 9 Years	66	6.68%
10 Years	96	9.72%
11 - 14 Years	78	7.89%
15 Years	55	5.57%
16 - 20 Years	168	17.00%
Over 20 Years	259	26.21%
Life	132	13.36%
Life W/O	20	2.03%
Death Row	2	0.20%
Out of State	8	0.81%
Total	988	100.00%



AGE	COUNT	PERCENTAGE
Under 21	3	0.30%
26-30	66	6.68%
21-25	14	1.42%
31-35	85	8.60%
36-40	107	10.83%
41-45	112	11.34%
46-50	104	10.53%
Over 50	497	50.30%
Total	988	100.00%

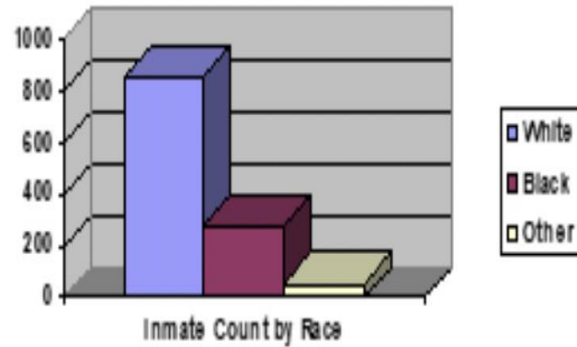


# PRISON DATA – LUTHER LUCKETT CORRECTIONAL COMPLEX (2019)

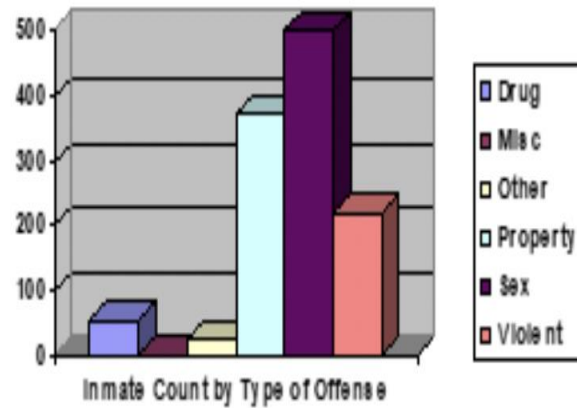
## Luther Lockett Correctional Complex

### Demographic Data

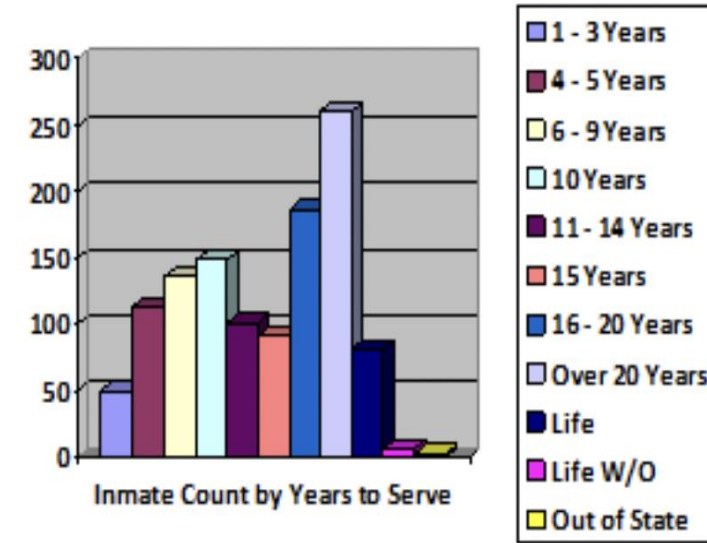
RACE	COUNT	PERCENTAGE
White	850	72.40%
Black	269	22.92%
Other	55	4.68%
Total	1174	100.00%



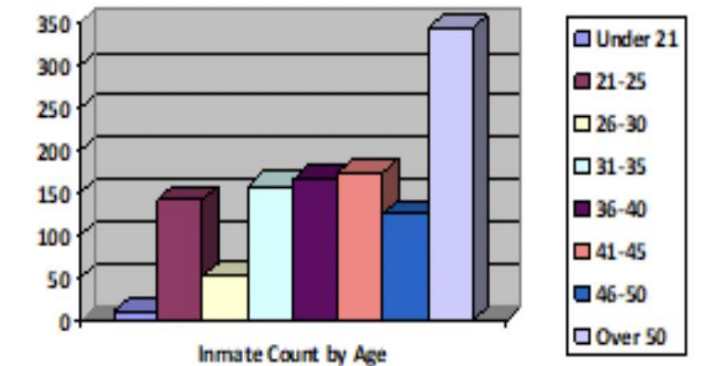
TYPE OF OFFENSE	COUNT	PERCENTAGE
Drug	55	4.68%
Misc	2	0.17%
Other	24	2.04%
Property	371	31.60%
Sex	499	42.52%
Violent	223	18.99%
Total	1174	100.00%



YEARS TO SERVE	COUNT	PERCENTAGE
1 - 3 Years	50	4.26%
4 - 5 Years	113	9.63%
6 - 9 Years	136	11.58%
10 Years	148	12.61%
11 - 14 Years	101	8.60%
15 Years	91	7.75%
16 - 20 Years	186	15.84%
Over 20 Years	260	22.15%
Life	81	6.90%
Life W/O	6	0.51%
Out of State	2	0.17%
Total	1174	100.00%



AGE	COUNT	PERCENTAGE
Under 21	10	0.85%
26-30	143	12.18%
21-25	54	4.60%
31-35	159	13.54%
36-40	166	14.14%
41-45	174	14.82%
46-50	125	10.65%
Over 50	343	29.22%
Total	1174	100.00%

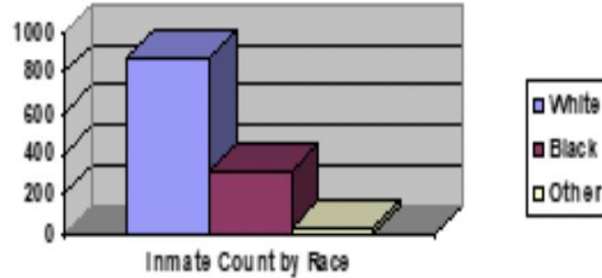


# PRISON DATA – ROEDERER CORRECTIONAL COMPLEX (2019)

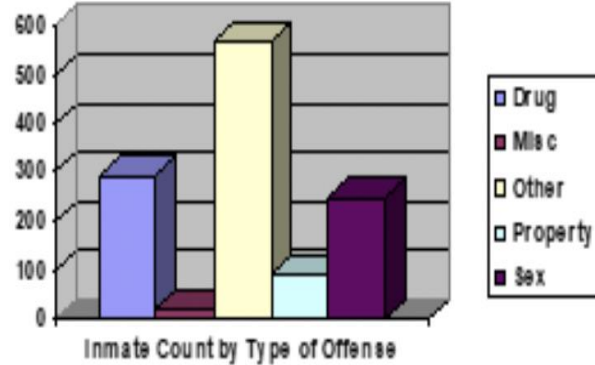
## Roederer Correctional Complex

### Demographic Data

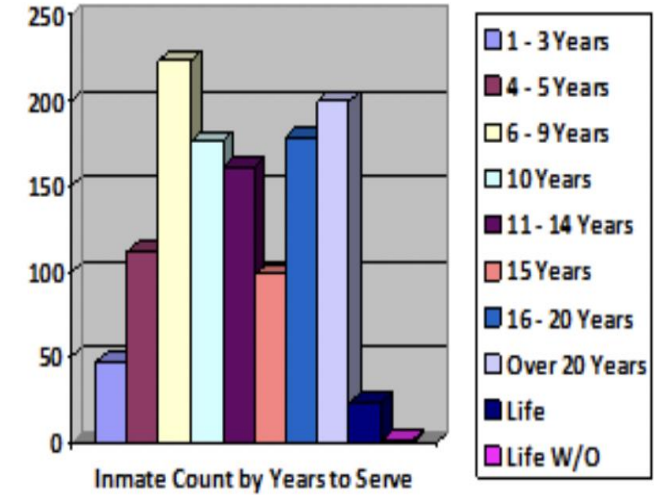
RACE	COUNT	PERCENTAGE
White	870	71.43%
Black	307	25.20%
Other	41	3.37%
Total	1218	100.00%



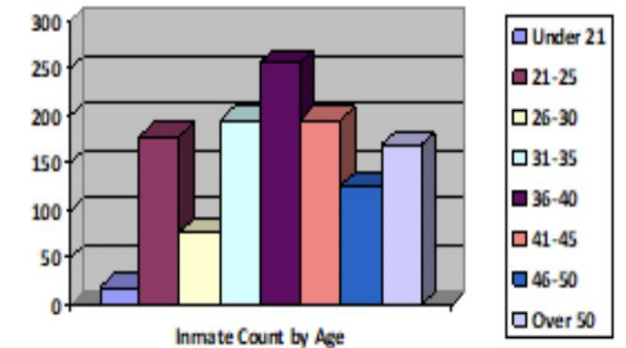
TYPE OF OFFENSE	COUNT	PERCENTAGE
Drug	293	24.06%
Other	18	1.48%
Property	563	46.22%
Sex	95	7.80%
Violent	249	20.44%
Total	1218	100.00%



YEARS TO SERVE	COUNT	PERCENTAGE
1 - 3 Years	47	3.86%
4 - 5 Years	111	9.11%
6 - 9 Years	223	18.31%
10 Years	176	14.45%
11 - 14 Years	161	13.22%
15 Years	98	8.05%
16 - 20 Years	178	14.61%
Over 20 Years	199	16.34%
Life	24	1.97%
Life W/O	1	0.08%
Total	1218	100.00%



AGE	COUNT	PERCENTAGE
Under 21	19	1.56%
26-30	179	14.70%
21-25	77	6.32%
31-35	196	16.09%
36-40	256	21.02%
41-45	196	16.09%
46-50	126	10.34%
Over 50	169	13.88%
Total	1218	100.00%







# ECONOMIC STABILITY

# FOOD SECURITY

## What does it mean to live in poverty?

Poverty rates are provided as supplemental information to the food-insecurity rates. Poverty rates are determined by the number of members in a household and their annual income.

Household #	100%	130%	185%
	\$12,880	\$16,744	\$23,828
	\$17,240	\$22,412	\$31,894
	\$21,960	\$28,548	\$40,626
	\$26,500	\$34,450	\$49,025

These rates do not vary from state to state (except in AK and HI), despite significant differences in cost-of-living.

SOURCE: [Federal Register](#), Vol. 86, No. 19, February 1, 2021, pp. 7732-7734

SOURCE: [U.S. Department of Health and Human Services](#)

# FOOD SECURITY

2019 Overall County Food Insecurity In Kentucky, Oldham County

FOOD INSECURE PEOPLE IN OLDHAM

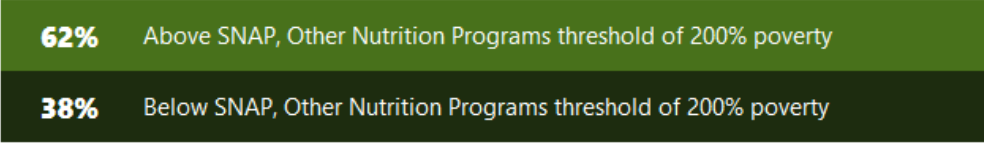
4,400



FOOD INSECURITY RATE IN OLDHAM



ESTIMATED PROGRAM ELIGIBILITY AMONG FOOD INSECURE PEOPLE IN OLDHAM

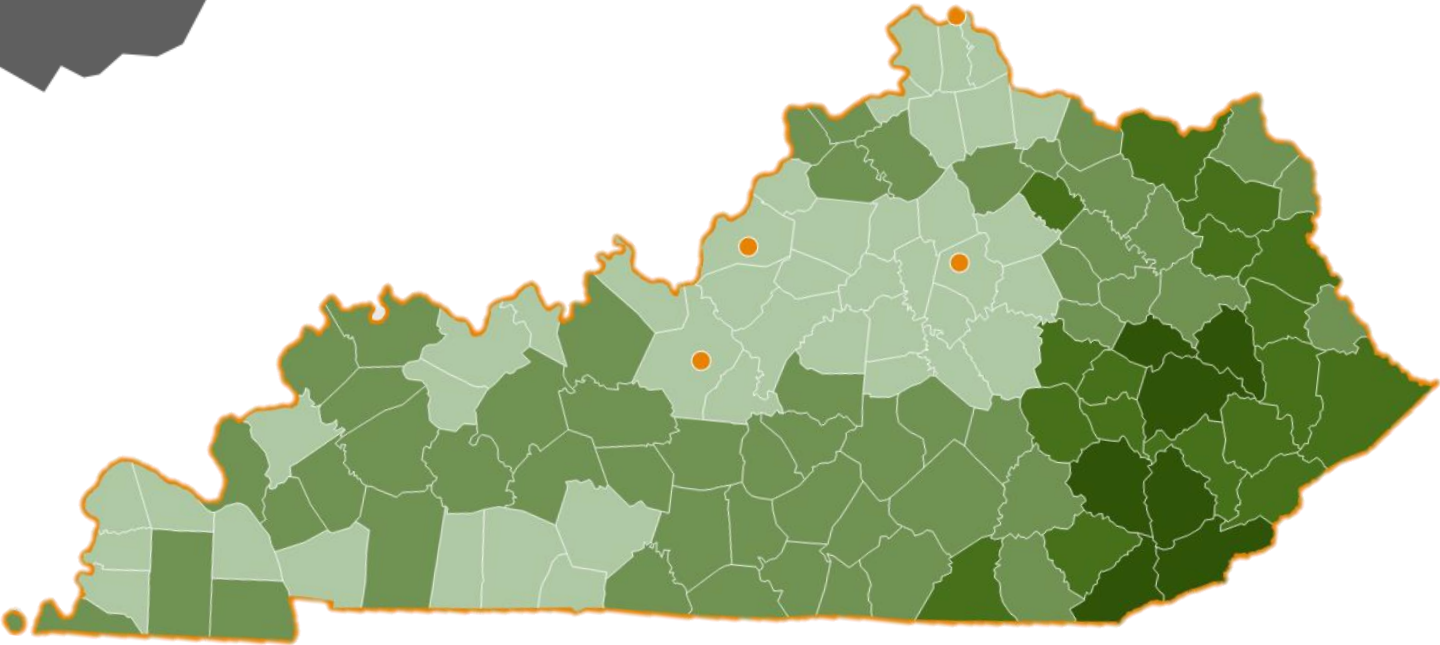


AVERAGE MEAL COST IN OLDHAM

\$3.03

ANNUAL FOOD BUDGET SHORTFALL

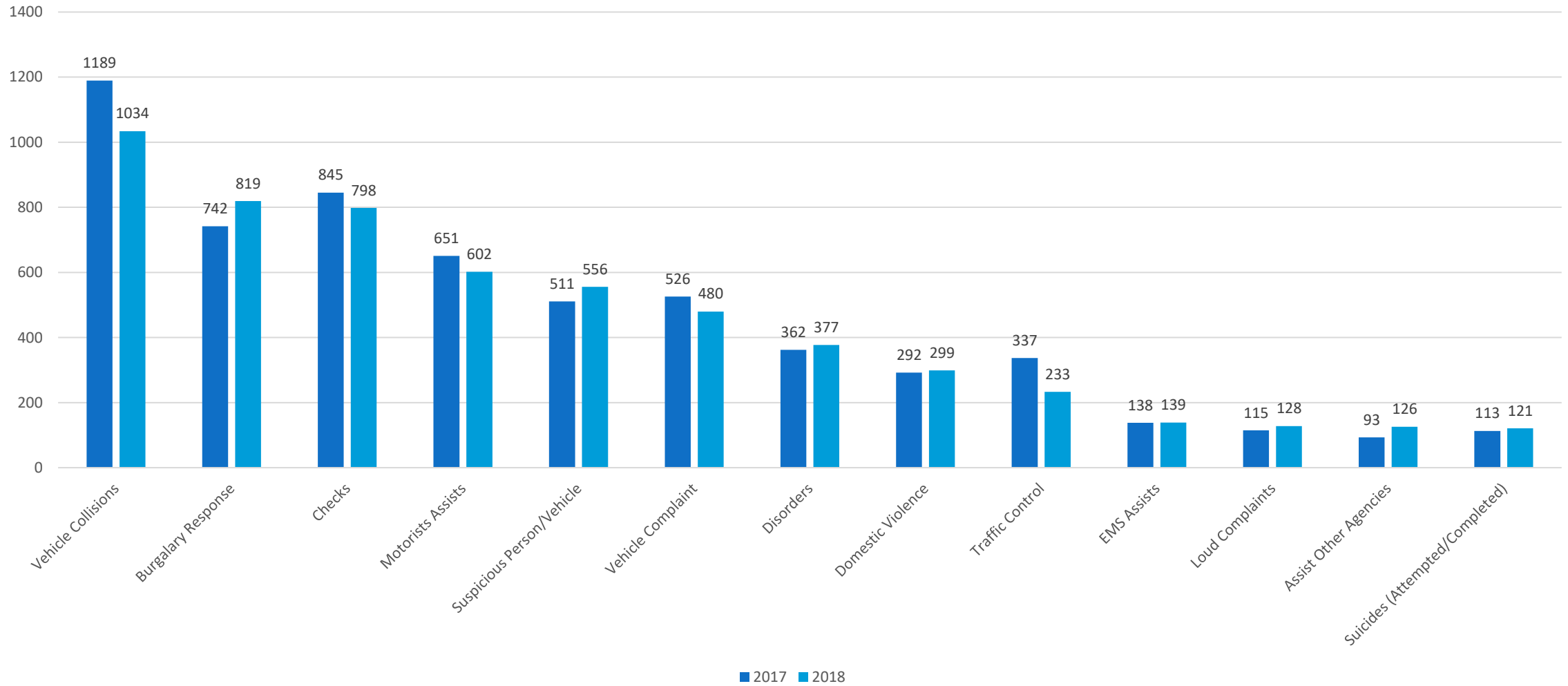
\$2,281,000



# NEIGHBORHOOD AND BUILT ENVIRONMENT

# COMMUNITY SAFETY, INJURY AND VIOLENCE – OLDHAM COUNTY PD

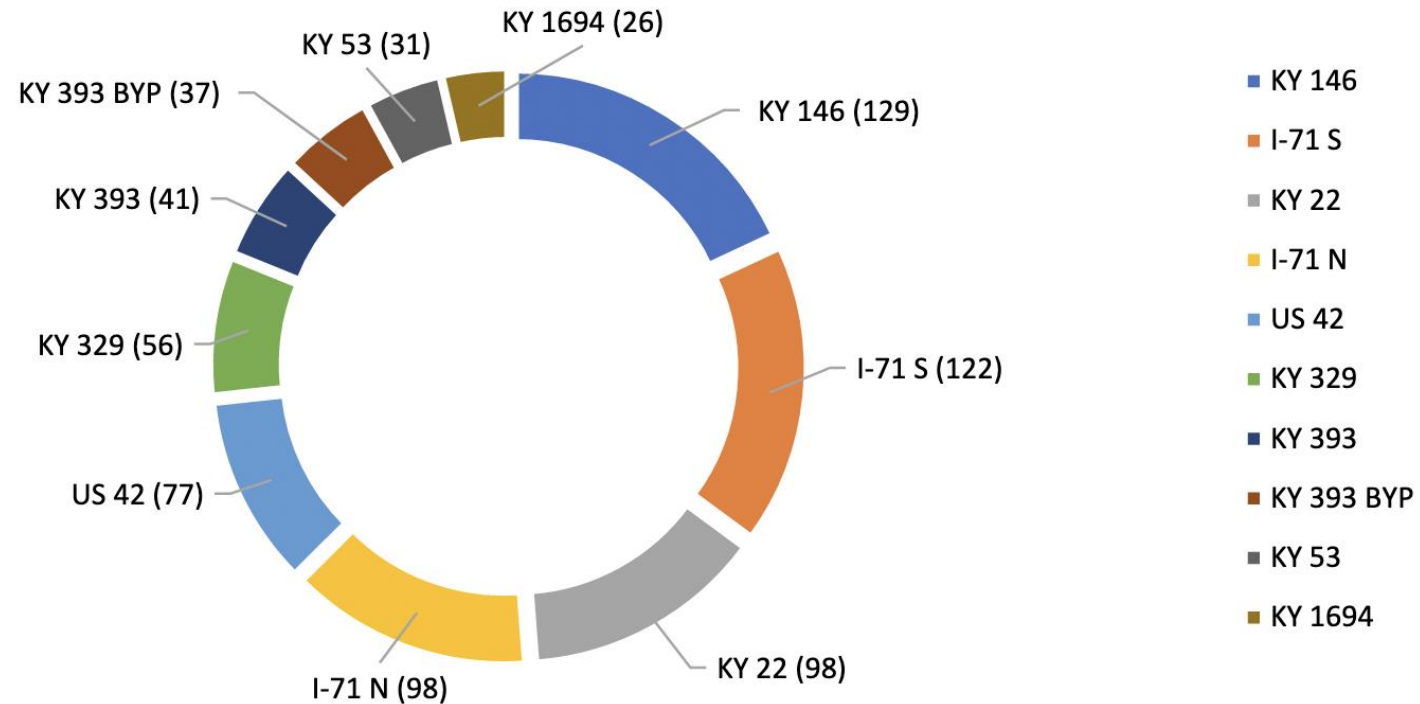
Most Common Calls for Assistance, 2017-2018





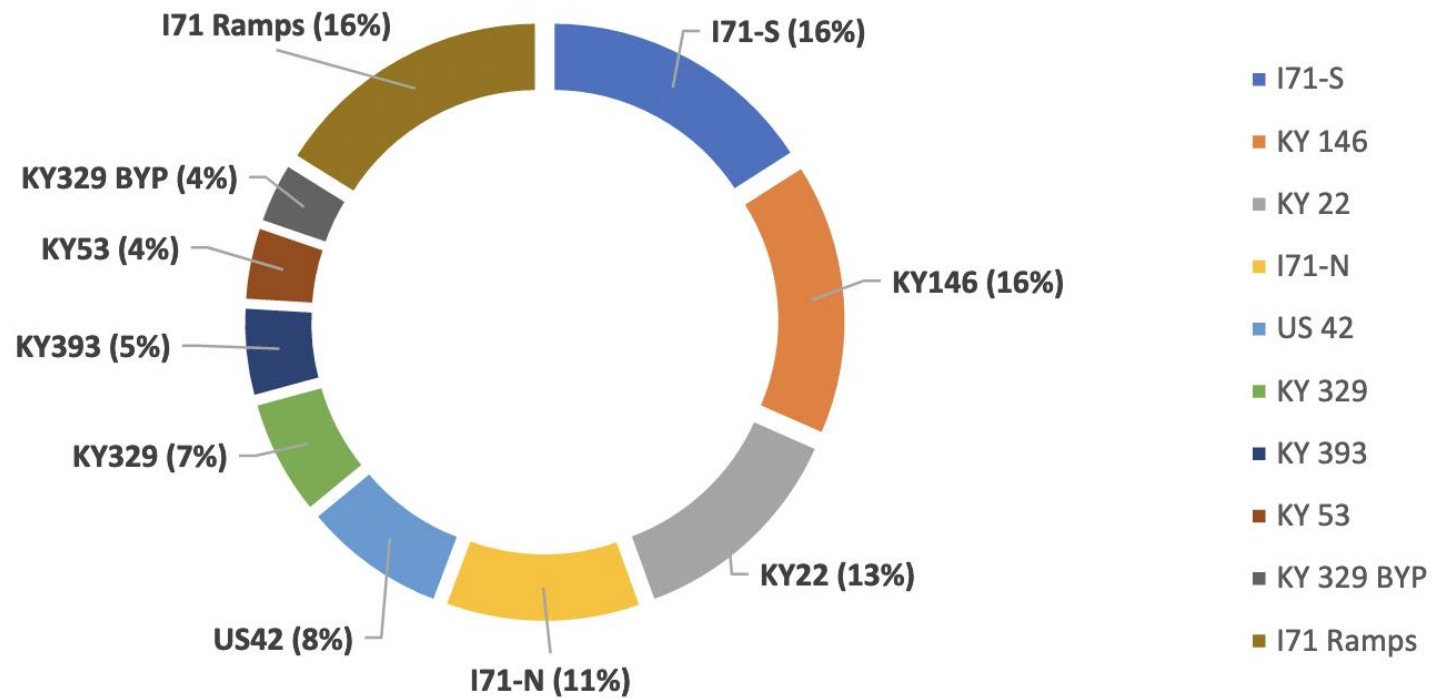
# COMMUNITY SAFETY, INJURY AND VIOLENCE – OLDHAM COUNTY PD

## 2017 Oldham County Top Ten Roadway Collision Locations



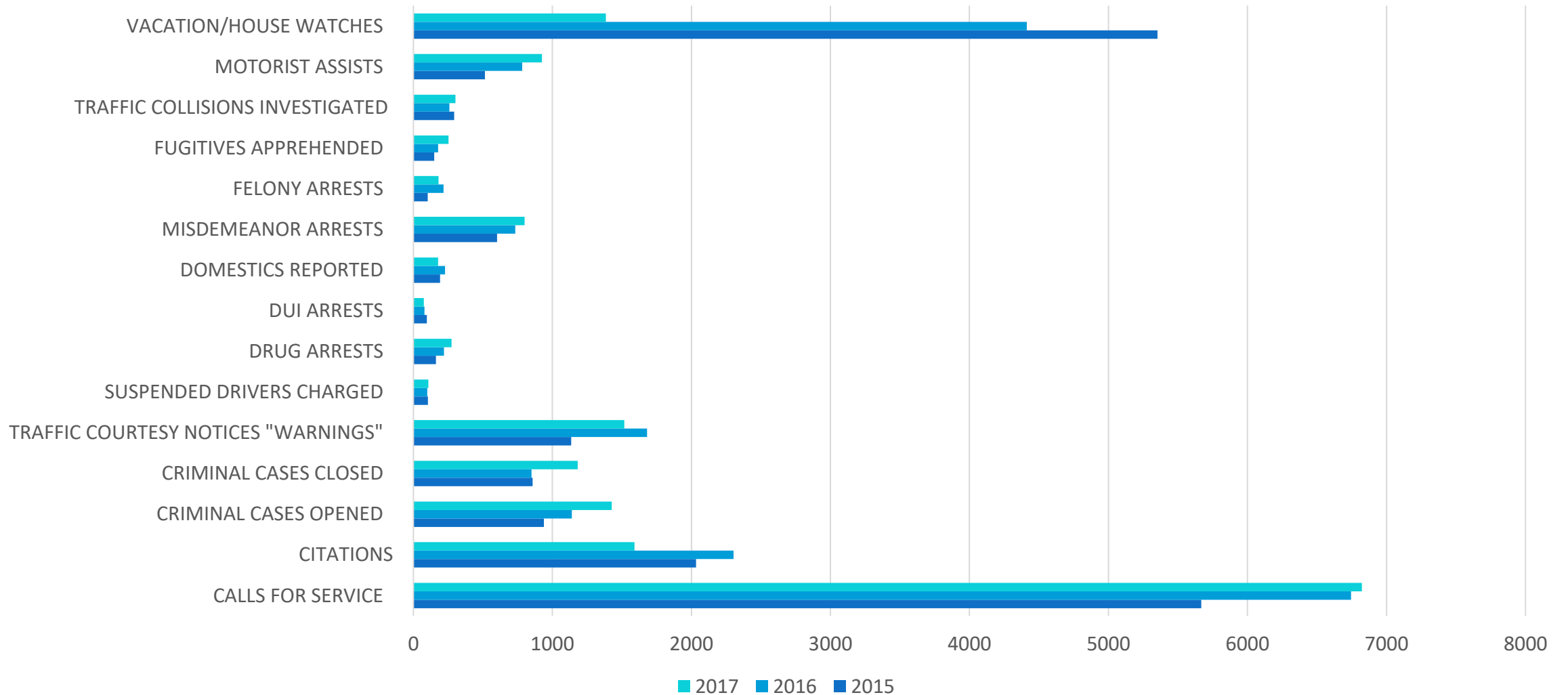
# COMMUNITY SAFETY, INJURY AND VIOLENCE – OLDHAM COUNTY PD

## 2018 Oldham County Top Roadway Collision Locations



# COMMUNITY SAFETY, INJURY AND VIOLENCE – OLDHAM COUNTY PD

Activity Reports, 2015-2017, La Grange Police Department



# PHYSICAL ENVIRONMENT



## ENVIRONMENTAL PUBLIC HEALTH TRACKING – INFO BY LOCATION

The places where you live, work, and play may affect your health.

You can use this **Info by Location** tool to get a snapshot of some of the environmental health issues for your area.

**Enter a county name.**

Oldham, KY

Don't know the county name? Type in a zip code instead.

SUBMIT

Select Topics (optional) »

# QUESTIONS

Meagan Hurst, MPH  
Senior Epidemiologist  
502-222-3516 ext. 136  
[Meaganl.hurst@ky.gov](mailto:Meaganl.hurst@ky.gov)

Oldham County Health Department  
1786 Commerce Parkway  
LaGrange, KY 40031

<https://oldhamcountyhealthdepartment.org/>