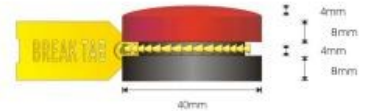
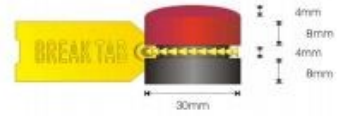


Safe T Punch (single glazing)

Specifications, Appearance and Composition

- Part Numbers: STP30/N and STP40/N
- Body: Black Anodized Aluminum
- Plunger: Red Anodized Aluminum
- Spring: Taper wound stainless steel
- Safety: Plastic break-away security strip
- Cir-clip: Stainless steel
- Impact Tip: Tungsten alloy
- Size: 29mm x 24mm or 39mm x 24mm
- Weight: 38g or 65g
- Tape: 3M VHB 4936 Conformable Foam



Performance Data STP30N

N	Max Strikes	Min Strikes	First Strikes	Max Strikes	Min Strikes	First Strikes
	4mm BS 857 Tempered Glass			5mm BS 857 Tempered Glass		
70	4	1	57%	4	1	57%
80	4	1	71.50%	3	1	85%
90	3	1	71.50%	2	1	71.50%

Performance Data STP40N

N	Max Strikes	Min Strikes	First Strikes	Max Strikes	Min Strikes	First Strikes
	4mm BS 857 Tempered Glass			5mm BS 857 Tempered Glass		
60	2	1	57%	2	1	28.50%
70	2	1	85%	2	1	71.50%
80	1	1	100%	1	1	100%

USE ONLY ON CLEARLY MARKED TEMPERED GLASS