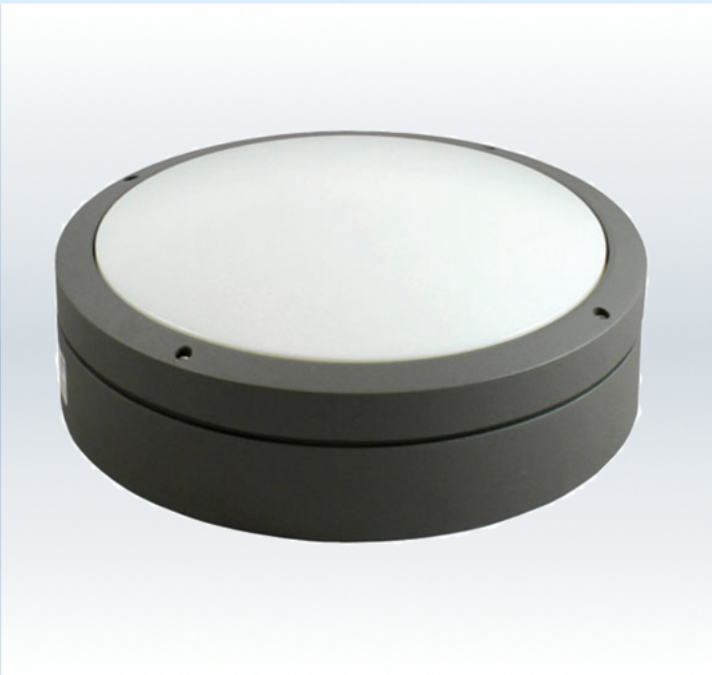


Lexington LED

Vandal resistant die cast Aluminium fitting



INTERNAL LIGHTING

Key Points

Designed to offer the largest energy and maintenance savings

Variety of dimmable options

Dual LED PCB for extended longevity

Designed to withstand physical impact

Excellent colour rendering

20W of LED bright white light with high power factor

A number of occupancy control options

Choice of emergency options, M3, NM3, Self Test (ST3) and emergency lighting guard with GSM (ELGGSM)

131 lumens per watt at 500mA (Output can be adjusted)

Full 5 year warranty

Construction

Die cast Aluminium body. Components are mounted on a steel gear tray. Opal UV resistant diffuser. Dark grey powder coated finish. Tamper proof screws hold the diffuser into luminaire body.

Installation

Designed for internal or external use. Can be wall or ceiling mounted. Please note the detection area zone does alter between the wall and ceiling. Cable entry is to the rear of the fitting. 4 pole connector block as standard on this range.

Specification

Numerous options are available for this fitting. If you require a particular setup of the Hytronik occupancy sensor please contact Lux Bright. Consideration of the emergency options is recommended. Dimensions of Lexington fitting are 351mm diameter with a depth of 142mm.

Stock Codes & Descriptions

Lex/LED/20W/Dim10%	10% Dimmable LED VR FTG
Lex/LED/20W/Dim10%/EM3	EMG 10% Dimmable LED VR FTG
Lex/LED/20W/DimOnOff	Sensor On or Off LED VR FTG
Lex/LED/20W/DimOnOff/EM3	EMG Sensor On or Off LED VR FTG
Lex/LED/20W/Switched	Switched LED VR FTG
Lex/LED/20W/Switched/EM3	EMG Switched LED VR FTG