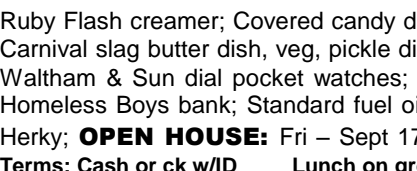
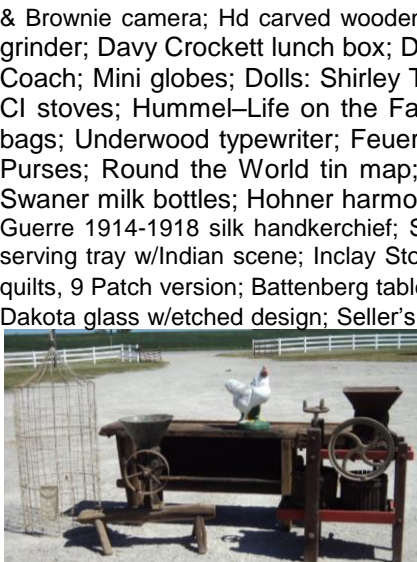


ANTIQUUE AUCTION

Located at Duwa's Auction Building, 1½ mi West of Wellman, IA on Hwy 22

Sat.-September 18, 2021 - 9:00am



OAK - PINE - WALNUT & PRIMITIVE FURNITURE: 2-Oak curved glass china hutches; Pine straight front kitchen cabinet; Straight burlled blind front kitchen cupboard w/punched sides; Oak Seller's cabinet; Oak 2 dr book cabinet; Pine dry sink w/high back & spice drawers; Pine cabinet / table w/ copper coated work space; Walnut step back kitchen cupboard w/etched glass; Pine/ walnut straight blind front cabinet; Oak Gentleman's dresser; 42" round oak table w/3 leaves; Queen Ann walnut dining table w/3 leaves; Walnut writing desk w/possum belly drawer; Maple display cabinet w/ glass doors; Oak commodes; Deco ptd commode w/ towel bars; Alpine stenciled 1 door safe; Oak spoon carved desk; Oak Child's C roll top desk w/ chair; Cedar chests; 1850 Stenciled primitive blanket chest (N Rich, Burlington, IA); 35 door metal postal cabinet; Rocky Mountain Chocolate Factory Store back bar mirror; 2-4' & 1-6' oak glass front showcases; 3"x3"x5' Marble top/oak base portable chocolate cutting table on casters; Oak display shelving; Ice cream table & 4 chairs; Oak machinist caddy; Oak 4 dr file cabinet; Camel back & flat top trunks; Stenciled folding game table; Singer sewing machines; Oak dining chairs; Caned bottom rocker; Walnut sewing caddy; Oak Ele.Telephone Co wall phone; Seth Thomas wall clock; Sessions & Seth Thomas mantle clocks; Rod iron bed frames; Child's rocker; Sonora table top radio & Victrola; 6 pressed back/caned bottom chairs; Rod iron footstool; Sentry safe; Lady silhouette wall shelf; Prints: Horse w/Oak gilded frame, Clark Co Mule Festival, B Shields horse pencil drawing, Ditmars, Kerr & Co- W Liberty, IA print, End of the Trail, Vansickle horse print, R Dormon-Canada Goose, Grant Wood-Stone City, Last Supper, Cottage; Red Riding Hood **STONEWARE:** 3 gal CM Turley (Parish, IA) crock w/lid; Turley 1 gal jug; 2 gal E Melcher Parish Des Moines Co IA jug; 3 gal salt glazed crock w/rib cage; 4 gal Peoria Pottery butter churn; 1, 3, 4 & 5 gal Peoria crocks; ½ gal & 2-2 gal. Peoria jugs; 4 gal salt glazed butter churn; ½ & 1 gal Beck jugs; 5 gal Beck crock-Beck Brothers Parish; ½ gal Fort Dodge crock; 3 & 4 gal Western butter churns w/lid & bail; 2, 3,4,5,6, 10 & 12 gal Western crocks; 2, 4 & 5 gal Western crocks w/Mother in law tongue; 1 gal Western "Lily" crock; ½, 1 & 2 gal Western jugs; 2 gal Western beehive jug; Blue Western canning crock; Western mini crock; 2, 3, 4, 10 & 15 gal Red Wing crocks; 2 gal salt glazed Red Wing crock; 2 gal Red Wing churn; 2 gal salt glazed Red Wing jar w/Lolli-pop design; 3 gal Red Wing crock w/Birch leaf; ½, 1, 3,4 & 5 gal Red Wing jugs; 2 gal RW brown/ white jug; 2 gal salt glazed w/rib cage jug & crock; 3 gal salt glazed crock w/Birch leaf design; 1 & 2 gal salt glazed crocks; D.W. Graves Est Moreland-1 gal salt glazed jug; 2 tone jug w/ bail; 4 whiskey jugs; ½ gal & 2 gal Monmouth crocks; 15 gal Monmouth crock w/hairline; Primitive brown crock w/handles; 3 gal brown beehive jug; **Canning jars:** 3 Peoria, McComb stacking & others, 3 gal Weir canning jar, 8 Weir w/lids, 2-2gal brown canning jars, Weir, Brown & plain jars; Small jars w/lids; Lg jar, Jar w/bail, 2 & 3 gal stacking vinegar jars; Small blue jars; 1 gal white McComb jug; 1 gal IL jug; 2 gal jug; 1 gal brown jug w/spout; 1 & 5 gal Blue band jugs; ½, 1 & 2 gal brown McComb jugs; ½ gal RW & other wide mouth jugs; 5 gal jug; ½, 1 & 4 gal salt glazed & other jugs; 2 gal jugs/ crocks; 3 gal crock w/ lid; 3 gal brown beehive jug; 9 small brown crocks; Brown salt glazed & other monkey jugs; Br/ white 4 gal crock; 3 gal Ruckels crock; 1 gal Ruckels jug & brown jug; 2 gal salt glazed Gardiner ME jug; 1 gal Buckeye Pottery McComb IL jug; Beehive jug; ½ & 1 gal brown & br/white jugs; 1 gal & Brown jugs w/pour spouts; 2 gal white jug; **Pitchers:** Camark Artware blue, Sleepy Eye w/dam., Brown cream, Chain blue cream, 2 Tone, Brown teapot style, #492H brown, Brown water pitcher, Sheep, Blue/ white w/hunting scene, Oxford stoneware cream, Blue gravy, Pottery, etc; North Star & Peoria beater jars; Stoneware lids; **Adv Stoneware:** Rock Island Lines-1 gal jug; Dick's Beer mug-The Hi Note in Brewing-McComb; RW McDonalds-Platte City, MO crock; UHL Pottery blue syrup; 6th Annual Conv. 1987 blue/white pottery Moline IL decanter; **Adv Blue band beater Jars:** Shearer Bros-Peru, IA, GE Hodgins & Wife-Whittier, IA; Lundell Bros-Gowrie, IA; JA Rutherford - Gray, IA; EE Kirkhart - Lorimer, IA; John Peterson & Co - Randall IA; John Elick-Keswick w/crack; Small beater jars; Blue Western pie pan; 1, 2 & 5# blue butter crocks; Blue beater jar; Blue/white spittoon; Brown stoneware cake mold & 3 mugs; **Benningtonware:** Veg bowls, butter crock w/out lid, 7½", 8½" & 10½" serving bowls; 12" serving bowl, teapot, Canning jar, Veg "Virginia" platter & reclined man pen holder; Sigourney 175 yr stoneware jar; Turby mini jug; Small unmarked jugs; **Stoneware bowls;** 5", 6½", 8", 10½" & 12½" blue milk, 9" blue RW, 10" green bowl, 11" Blue band spongeware, Blue Whitehull, Yellow spatterware, Spongeware blue/white custard, #6 & #8 brown, Blue/white chain, Brown bowl, Brown /white band spongeware, Blue band, #10 Flurdelese, Butter Crocks: RW, Pressed leaf design, Cow, w/hunting scene, 5# & other butter crocks; Blue bowls, Mini bowls & custards; Mini jugs; Blue beater crock; Blue/ green jardinière; stoneware pipe; Buckeye crock wts; 1939 Wellsville Chicago pottery shoe; Redware pitcher w/lid; Misc Commemorative salt glazed newer stoneware pieces; **PRIMITIVES - WOOD BURNING HEATING STOVES:** Apple cider press; Lindsay Bros wooden hand crank corn sheller; Green/ red stenciled hand well pump; Cast iron Case Threshing machine Eagle; 2-Johnson Sea Horse 5 hp boat motors; The Deming pitcher pump; Universal General Store table top coffee grinder; Swift Mfg Waterloo meal grinder; 2 Industrial platform carts; Maytag wringer wash machine; 6' Red wooden bellows; 100# anvil-rough; 50" ice saw blade; 3 strings of graduating sleigh bells; Large copper kettle w/handles; 17½ gal Military drinking water barrels; Lg wire Parrot bird cage; Vintage street light top; Porcelain light covers; Faultless #28 wood burning stove; Hand crank corn sheller; 30 gal cast iron kettle w/bail; Forge stand; Forged iron hooks/tools; Primitive hand tools; Galv. pails/ tubs; Cream cans; Archer grease bucket; Surge Vac pump; Primitive fluid dispenser; Wheel barrow; Vintage trike, scooter & Schwinn bike; Concrete yard rooster; Chicken water; Moose, deer & bull horns; Co-op & Quaker State 5 gal cans; 5 gal cans; Pitch fork, Wooden rake; Boat oars; Box corn sheller; CI skillets; White Mountain hand crank 1½ gal ice cream freezer & dough mixer; Roseville like vase; Stover #80 crepe maker w/child's scene; Wash board; Child's tinware dishes, etc; Paul's lantern w/red lens; Dietz No 2 lantern; Pickle jar; Cookie cutters; Sad irons; 2 Kenton Safe banks w/cherubs; **Primitives:** Child's mini spoon carved doll bed; Wooden butter churn & buckets; Oak wall spice cabinet; Metal Dazey butter churn; Oak mirror wall hat rack; Handy drying rack; Oak wall cabinet; Green table lamp; Croquet set; Carom board; Large wooden bowl; Woven basket; 2 qt #5 sausage stuffer; Simmons mini waffle iron; Cr/green graniteware; Canning jars; Slaw cutter; Watkins Duster; Hand saws; Hay forks/ knives; Post drill; McCoy teapot; Tin windup dog; No 2 & Brownie camera; Hd carved wooden box; Cast iron bowl w/bail; Majestic Mighty Monarch of the air Radio; Cadahy's Lard tin; Kitchen Master scale; Rollman mini meat grinder; Davy Crockett lunch box; Deer lamp; Collection pencil sharpeners; Cast iron horse drawn fire ladder wagon; CI horse drawn Coach; Mini globes; Dolls: Shirley Temple, Little Jack Horner, Tin headed w/rag bodies, GI Joe w/box & Bisque dolls; Child's tin & CI stoves; Hummel-Life on the Farm figurine & other Lefton child figurine; Umbrella's; Jack of all Trades game; Leather marble bags; Underwood typewriter; Feuer & other mini lanterns; Coca Cola Santa bank; Child's cowboy boots, slate & blocks; BB glove; Purses; Round the World tin map; Tin marble games; String holder; 1923 Liberty silver dollars; Vintage coin holder; Sidwell's & Swaner milk bottles; Hohner harmonica; Blue enamel covered sugar; Gray granite creamer; Currier & Ives book; Souv, De La Grande Guerre 1914-1918 silk handkerchief; Straight edge razors; Christmas decorations; Wooden sheep w/wool, Santa; Wolf/dog figurines; 16½" tin serving tray w/Indian scene; Inclay Stone dresser box & 2 glasses; Hankie box; Quilt stand; Vintage linens; Quilts: Double wedding ring, 2 Star quilts, 9 Patch version; Battenberg table cloths; Feed sack & curtain fabric **GLASSWARE - ADVERTISING - WATCHES:** Large collection of Dakota glass w/etched design; Seller's sugar jar; Pyrex nesting bowls; Weller pedestal stand w/ pot; 2 Weller flower pots; Hand ptd oyster dish & bowls; 12 place Currier & Ives Redware dinnerware set; Homer Laughlin cream pitcher; Child's butter dish; Green juice pitcher; Nippon & German cr/ sugars; Carnival berry set, vases & bowl; Green/ white butter pats; Staffordshire blue plate; Green depression cake plate, syrup & reamer; Pink dep bowls & cake plate; Czech pieces; Pint/ qt blue jars; Lg glass pig; Misc Milk glass & hen on nest; Glass coffee, tea, salt & spice jars; Shirley Temple cr & cereal bowl; Moon/Star & other compotes; Salts; Lg Stangle platter; Shawnee Tom the Piper Son creamer & Rooster creamer; German candle holder; Aladdin Model 12 lamp; Kerosene & Heart finger lamps; Double finger lamp; Mother of the Kitchen napkin holder; Portrait plate; Apple cookie jar, sugar, s/p; Tea sets; Tea pots; Cookie jars; Royal Copley rooster, Lefton cat, Chickens, Mickey Mouse, etc; Sigourney Methodist, Harper & Keokuk Co plates; Rolling pin; Paper weights; Blue carnival bowl; Tea Leaf dinnerware; 1975 Powell's Store-S Eng piece; Stemmed bowls, Celery; Sugars; Ruby Flash creamer; Covered candy dishes; Des Moines Co ash tray; Pink flowered pie plates; Cruets; Clear veg bowls; Salts; Pewter dinnerware; Custard dish; Carnival slag butter dish, veg, pickle dish, etc; Pink hobnail Water pitcher, desserts, stemware; Bread plate; Satin glass rose bowls, Glass eggs; **Watches:** Elgin, Waltham & Sun dial pocket watches; Bulova ladies watch; Westclox in box; **Adv:** Cast iron Deckers Iowa pig bank; Father Flanagan's Boy's Home for the Homeless Boys bank; Standard fuel oil therm.; N Eng. Creamery Picnic Celebration poster; Glass photo slides from the Bible; U of I Hawkeye Banks, Airplane, '55 Chevy, Vans & Herky; **OPEN HOUSE:** Fri - Sept 17th Noon-7pm. **ORDER OF SALE:** Come prepared as 2 rings will run throughout the day. 1:00pm-Furniture. **Web:** duwasauktion.com

Terms: Cash or ck w/ID Lunch on grounds Not responsible for accidents or theft

Mrs Jim (Jean) Cavin Estate - Mrs Dr. Carl (Carole) Reschly & others: owners

Auctioneers: Dwight Duwa 319-646-6775 Jeff Wille