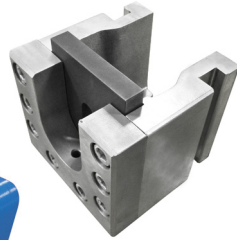
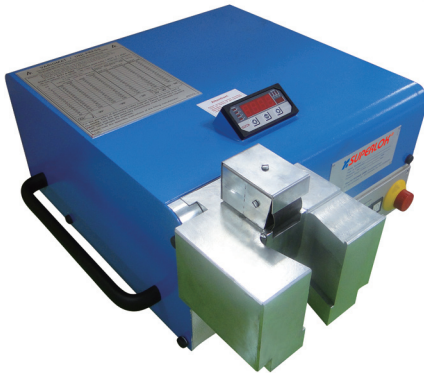




SUPERLOK USA

Multihead Hydraulic Swaging Unit

SMHS-A



■ Flaring unit & Cutting ring assembly unit

Features | Equipment

- Compact and rugged table-top unit for mobile and flexible use
- Very well suited for both, assembly of most cutting rings and flaring (37° SAE, 10°) of tubes with Ø 6 - 42 mm
- Manual pressure adjustment with digital display
- Short assembling times of only few seconds
- Short set-up times when changing the tube diameter or the working method

Options

- Storage box for cutting ring assembly tooling (assembling connections and counter-support plates)

Technical Data

Tube diameter range (OD)	6 - 42 mm
Hydraulics	3.7 l/min
Capacity of the hydraulic tank	3 l
Maximum hydraulic pressure	200 bar
Feed rate of the piston	7.5 mm/s
Dimensions (WxHxD)	535 x 285 x 500 mm

SMHS-M

Operating Procedures

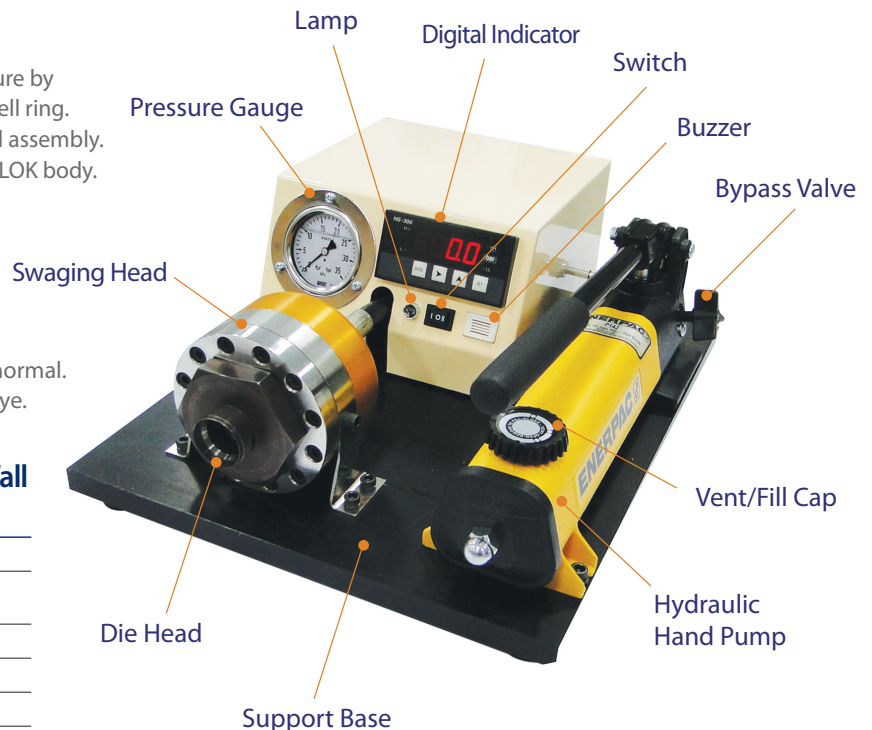
1. Set swaging pressure
2. Install SUPERLOK Nut and Ferrule set.
3. Swage Ferrules onto tubing. While Holding the tubing against the piston shoulder, increase the hydraulic pressure by the handpump up to the set pressure until hearing the bell ring.
4. Unthread the **SUPERLOK** nut and remove the preswaged assembly.
5. Install the preswaged assembly finger tight into a SUPERLOK body. While holding the body with a back-up wrench, tighten the nut 1/2 turn.

Features

1. Available the setting to adjust the pressure value according to the condition.
2. Activate the buzzer sound when complete to install in normal.
3. Assemble it to check the set pressure value by naked eye.
4. Available to use without electric power supply.

Pressure Setting & Recommended Minimum Wall Thickness of Tubing

Tube O.D (inch)	Stainless Steel	
	Tubing Wall inch (mm)	Set Pressure (bar)
3/4	0.065(1.65)	100
1	0.083 (2.11)	120
1-1/4	0.095 (2.41)	140
1-1/2	0.095 (2.41)	170
2	0.109 (2.77)	190



SUPERLOK USA

www.SuperlokUSA.com

5777 Olivas Park Dr Unit#G
Ventura, CA 93003

805-658-2043

sales@superlokusa.com

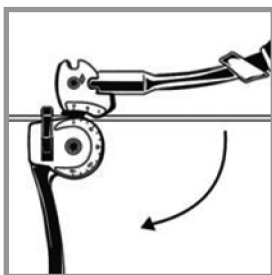
TUBE BENDERS

- New design for accurate and tight bends up to 180° in stainless steel and other tough metals.
- Patented, quick action trigger release repositions two-stage handle midway through a bend when both handle begin to meet. This feature allows easy fabrication of optimized bends up to 180° with reduce effort, better control and no crossing of handles.
- Rollers in bending handle reduce friction and bending effort, eliminate scoring of tubing.
- Comfortable and durable ergonomically molded cushion grips
- Vise lug for mounting in vise.
- Clamshell packaging available for 1/4" and 3/8" O.D models.

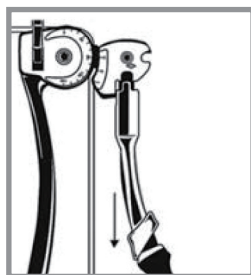
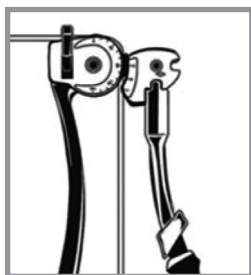


Series	Part No.		TUBE O.D	Raidius (to center of tube)	Weight (kg)
TUBE BENDER	TB	4	1/4	9/16	0.54
	TB	6	3/8	15/16	1.68
	TB	8	1/2	1-1/2	3.45

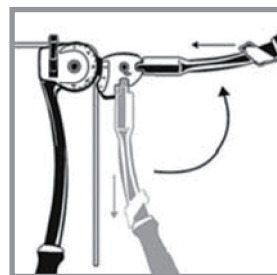
For bending soft copper, aluminum, brass, steel, stainless steel and other tubing.



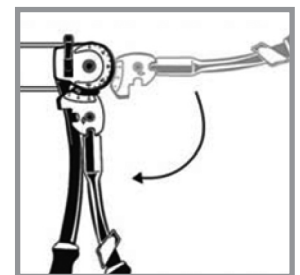
BEND TO 90°



PULL TRIGGER TO
RELEASE HANDLE



RAISE HANDLE UP &
RELEASE TRIGGER



LOWER HANDLE TO
COMPLETE BEND