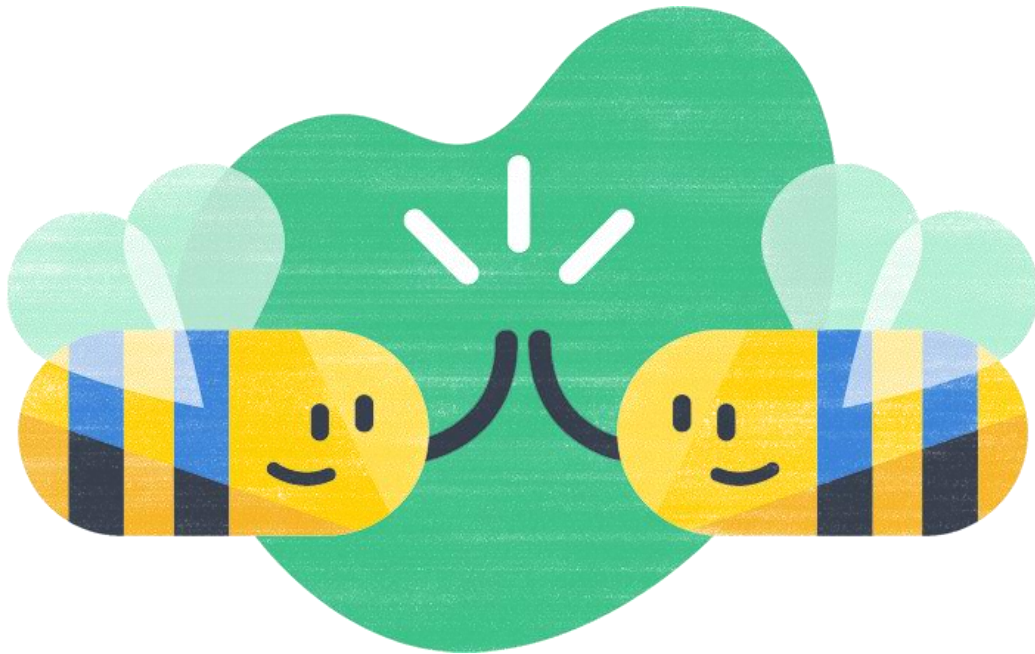


# BEES ARE IN TROUBLE

- Beekeepers are losing 30% of more of their hives every year.
- Native bee populations are declining fast
- The pollination work provided by bees and other pollinators is at risk and so is our food supply!

## You can help



### **Make your garden an oasis for bees**

Plant bee-attractive plants but be careful where you buy them. Many plants sold as "bee-friendly" or "butterfly-friendly" contain pesticides that have been shown to impair the health and survival of bees and other vulnerable pollinators. Make your yard a haven for bees by purchasing bee-safe organic starter plants or by growing plants from pesticide-free seeds.

### **Avoid using bee-toxic pesticides**

Some of the newer "systemic" insecticides and fungicides are carried into the pollen and nectar and can poison bees. These pesticides persist in plants and soil for several years and sulfur or microbial pesticides for fungal diseases only when needed will ensure that your local pollinators and other beneficial insects stay safe.