



“ TEAMWORK MAKES THE DREAM WORK ”

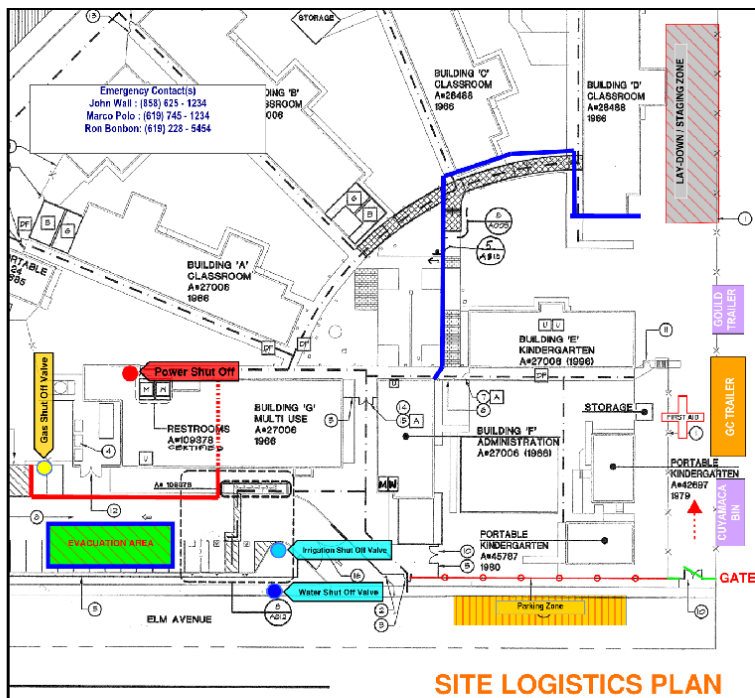
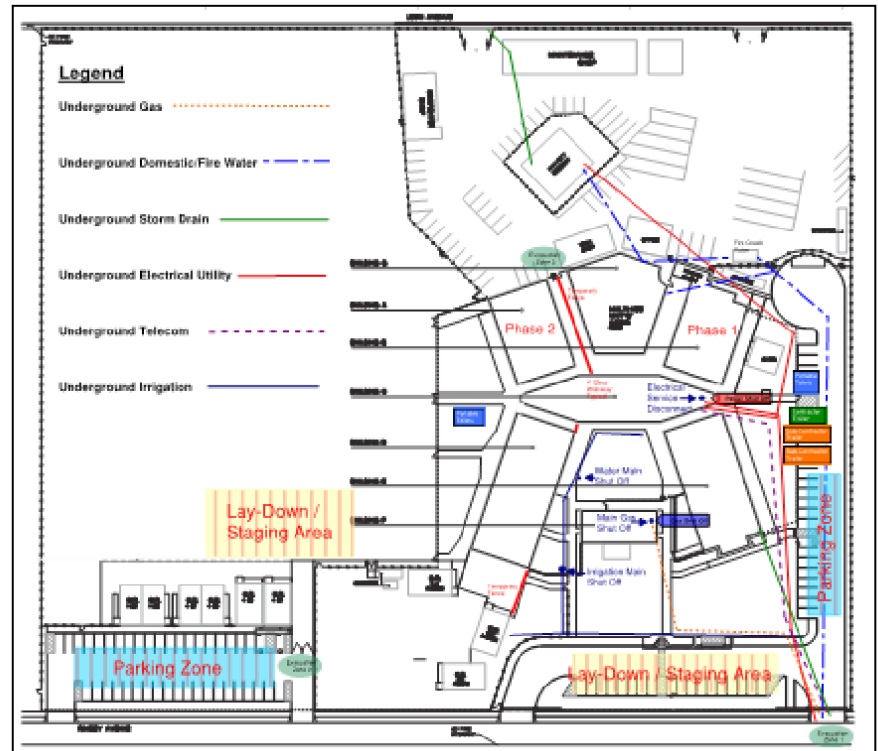
## INTRODUCING: LOGISTICS PLANS

Don't let your competitors gain the technological edge. Get assistance with preparing a project Logistics Plan. Provide site logistics like never before.

What is Logistic Plans? A Logistic plan is a single site plan identifying key project elements. Having all of these elements on one page will improve project awareness. Provide better coordination by communicating critical project information. Great for presentations. Add to wall like schedule.

Identify elements such as:

- Underground Gas
- Underground Domestic/Fire Water
- Underground Storm Drain
- Underground Strom Drain
- Underground Electrical Utility
- Underground Telecom
- Underground Irrigation
- Shut Off Valves
- Disconnects



Identify elements such as:

- Trailer Locations
- Lay Down Areas
- Staging Areas
- Parking Zone
- Evacuation Zones,
- Temporary Fencing