



Etchings

August 2020

2020-2021 Society Officers

President – Jane Stacey Vice President – Keely Stockman
Treasurer – Glenn Plauche Recording Secretary – Cynthia Brignac
Corresponding Secretary – Carol LeBell

July 2020 – First meeting since the outbreak of COVID19



From left: Ellen Cook, Liza Stejr, Carol Joachim, Carole Martinez, Astrid Mussiette (peeking behind Carole), Christian Bordelon, and videographer Buddy LeBell.
Should have made y'all guess who's who.



On left: Stephanie Prunty with guest Shannon Quick with Byron Jacob in background.
On right: videographer Buddy LeBell

Meeting Notes:

2019-20 Officers will stay on for the 2020-21 physical year.

Collected **\$29 for Angel's Place**. The **50/50 raffle** was won by **Jane Stacy**.

We had **23 members and 1 guest, Shannon Quick**, in attendance.

Lee Vinson stepped in for **Sunshine** and read us some **COVID19 funnies**.

"Trash goes out more than me" "Stupidity travels faster than any virus on the planet"

"Days of the Week underwear would be helpful right now"

"Nine months after COVID19 children will be name Scott and Charmin"

We are in the process of **renewing membership** and collecting membership dues.
Dues are due August 15th and Roster changes are due by September 30th.

~~~~~

**Sandra Carter is now in the Chateau Living Center  
716 Village Rd., Room #1005, Kenner LA 70065.  
Sending her a card would surely brighten her day.**

## Meeting Reminder

~~<~~

Wednesday

**August 12, 2020**

~~<~~

Meeting Begins 7:30pm

Doors Open 7:00pm

## Program:

## Hall Tea Pots and Kitchen Ware

By Bonnie Theard

## Show 'n Tell: August is Cake Plates

## Meeting Rules:

**We will continue with  
the new set up,  
masks required,  
hand sanitizer  
available, wipes  
available, bottled  
water only available,  
no door prize – only  
50/50 tickets  
and donations to  
Angel's Place in  
basket on table,  
No "for sale" glass  
table, and no  
refreshments.**

## CCDGS Website

[www.crescentcityglass.org](http://www.crescentcityglass.org)

Check it out for meeting  
and event information.

## Upcoming Glass Events!

### **All August Shows were Cancelled**

There are two scheduled for October but will wait to post them until September Newsletter.

**For those missing the big shows, here are a couple of other possibilities:**

We were contacted by **Helen Hudson's** granddaughter Carla Hellmers. She is selling Helen's collection, mostly Carnival Glass.

You can contact her at **504-415-9179** or **kjhellm@hotmail.com**.

Below are a few photos of her collection. She does have a complete list of items available that she can send you.



### **Also Contacted by Judith Balser.**

For Sale: Depression glass, Fire King, Anchor Hocking, Pyrex, vintage linens and aprons, collectibles, vintage sewing patterns, etc.

Everything on display from July 30 thru August 31.

Anyone interested can TEXT her at **504-427-8318** to set up a time to view in **Lakeview**.



## **Happy Birthday**

**Pam Coleman – 8/29**

**Sherry Pope – 8/22**

**Vicki Hale – 8/27**

**Donna Terrio – 8/25**

**Carol McCarty – 8/26**

**Lee Vinson – 8/24**

**Astrid Mussiott – 8/19**

~~~~~

Panama 1904 Glass

#15088 Panama Pattern

(or Jane Stacy's new COVID19 collection)

EAPG by US Glass Co., Pittsburg PA



The US helped Panama gain independence from Columbia during this time. The pieces are decorated with palms, cane, and bars. There are 30 pieces available but no place settings. Jane has collected quite a bit including the large pitcher and the small pitcher (salesman sample), nappy with side handle, vase, cake plate, large compote, banana holder, rose bowl, various bowls, etc. She also brought a Panama Mug and a figurine in National Costume of Panama that was her mother's.



She is looking for the covered sugar, the salt and pepper on coaster, and the butter dish.

Pattern of the Month: Cherry Blossom by Bonnie Theard

What makes Cherry Blossom unique among Depression Glass patterns is the 14-piece child's junior set available in both pink and delphite. The pattern was produced by Jeannette Glass Co. for 10 years (1930-1939), a longer time than most patterns of the 1930s.



Pitcher (6-3/4-inch) with two 3-1/2-inch tall tumblers (back) and two 4-1/4-inch tall tumblers (front)

There is much to like in this pattern: 40 pieces to collect, mainly in pink and green, although 17 pieces were made in delphite, as well as rare pieces in jade-ite, crystal, and red. Its scalloped edge is a signature design, and many serving pieces have open handles including the sandwich tray, platters, and bowls.

Included are grill plates, dinner and salad plates, berry bowls, four pitcher styles, six tumbler styles, and even a pricey 7-ounce mug. Alas, there is no cream soup, but there is a flat soup, also pricey. The company made a Cocktail Set of handled tray and six footed tumblers for the grand price of 42 cents.



From left: sugar bowl with cover, butter dish with cover, and creamer

Cherry Blossom is one of those Jeannette patterns that has an all-over design, similar to Jeannette's Floral pattern. Reference books devote three pages to this pattern; in Mauzy's case, four pages.

Collectors must keep in mind that this pattern has been reproduced. Tell-tale signs of a "repro" are seen in the number of cherries in the design, the realistic look of the leaves, the texture on the panels with the design, and the color, among other sure giveaways to the trained eye.



Three-leg footed fruit bowl (10-1/4-inch), cup and saucer (left), 5-inch berry bowl and 7-inch salad plate (right)

The most common reproductions are the shakers. According to Mauzy's "Revised and Expanded 4th Edition of Depression Glass," very few original shakers exist. The 19th Edition of Florence's "Collectors Encyclopedia of Depression Glass" noted, "Keep in mind that only two pairs of original pink Cherry Blossom shakers were ever documented."

Cherry Blossom is one of those Jeannette patterns that has an all-over design, similar to Jeannette's Floral pattern. Reference books devote three pages to this pattern; in Mauzy's case, four pages.



Center: 9-inch bowl with open handles and two sherbets.

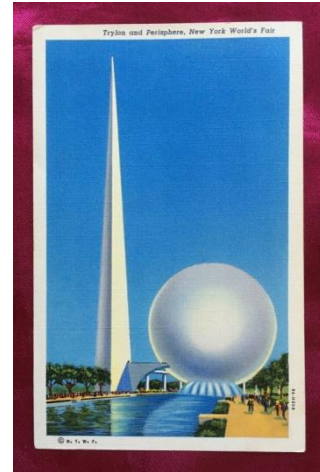
Collectors must keep in mind that this pattern has been reproduced. Tell-tale signs of a "repro" are seen in the number of cherries in the design, the realistic look of the leaves, the texture on the panels with the design, and the color, among other sure giveaways to the trained eye.

The most common reproductions are the shakers. According to Mauzy's "Revised and Expanded 4th Edition of Depression Glass," very few original shakers exist. The 19th Edition of Florence's "Collectors Encyclopedia of Depression Glass" noted, "Keep in mind that only two pairs of original pink Cherry Blossom shakers were ever documented."

1939-1940 New York World's Fair

Submitted by George Dansker

The 1939-1940 New York World's Fair was an amazing cultural exhibition and in its own way a rather poignant event as it occurred during one of the last periods of "normalcy" -- before the world would be fully engulfed by war. Participants included approximately 60 nations, 33 US States, and almost 1000 exhibitors. The physical location of the Fair was in what is called Flushing Meadows located in the Borough of Queens. The Fair was said to comprise at least 1200 acres. The official theme and song for the Fair was "Dawn of a New Day" -- celebrating "The World of Tomorrow." The official colors of the Fair were orange and blue --- combinations that you certainly would see in our 1930s and 40s glassware. At the Fair there was a great commercial aspect in that of big companies such as Westinghouse and General Motors had large pavilions. There was one exhibit which imagined what life would be like in 1960! And as with any Fair there were amusement "zones" as well. The Fair opened in April 1939 and ran until October, and during the same time period the following year. Many folks took home movies of the 1939 World's Fair and you can see these on such sites as YouTube. There have been many books and documentaries about the Fair. Unfortunately, most of the beautiful Art Deco buildings were torn down after the Fair closed in 1940. There are a few scattered remnants of the Fair still visible, and one building is still standing -- the Queen's Museum. One iconic ride from the Fair, the Parachute Jump, is still located at Coney Island today.



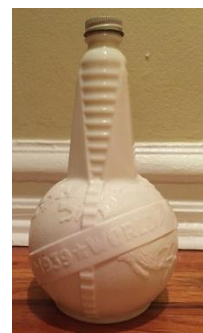
The Fair was such a treasure trove of wonderful Art Deco architecture and this same design style found its way into glass and china items that were sold as souvenirs. Collecting World's Fair Memorabilia has long been a popular hobby. You can find all kinds of things from stamps, postcards, statues, cloth items, lamps, vases, drinking glasses, and there was even a special edition 1939 World's Fair camera by Kodak. And there were beautiful pottery souvenirs. The Huxford's, in their excellent book the *Collector's Encyclopedia of Fiesta*, have this to say: "As a tribute to the American Potter, six pottery companies united their efforts and jointly built and operated an actual working kiln.....a variety of plates, vases, figural items and bowls were produced and marketed." The pieces were stamped: "The American Potter, (1939 or 40), World's Fair Exhibit, Joint Exhibit of Capital and Labor." Some items honored the "American Potter" while some highlighted a theme of the Fair which was the Inauguration of President George Washington, 150 years prior. Homer Laughlin made items to honor both George and Martha Washington.

Two of the most striking creations at the Fair were the Tylon and Perisphere -- two huge modern structures. You could go inside the Perisphere where there was a diorama and a slide show projection. The two structures together became a symbol of the Fair and their likeness was often used to decorate the many souvenir items.



Metal paperweight of the Tylon and Perisphere Celluloid Salt and Pepper Shaker on base. (to left) (These tend to melt in the New Orleans heat.) Notice the Blue and Orange color scheme. They have a little tab on the bottom that slides so you can put in the salt and pepper.

"Faux" Wedgewood miniature vase. Marked "Japan" on the base. (to right)



Milk glass vinegar bottle. (to far right) Interesting that it only says "1939 World's Fair" so --- perhaps it was thought it could be sold for the Golden Gate International Exposition happening in San Francisco at the same time. I have seen a photo of one with a label that says "Pure Cider Vinegar." I have also read that these were made by Anchor Hocking for the A&P Stores.

Beautiful Homer Laughlin small vase from the American Potter Exhibit. (to right) This came from the French Quarter Flea Market years ago. It is dipped in traditional Fiesta yellow.



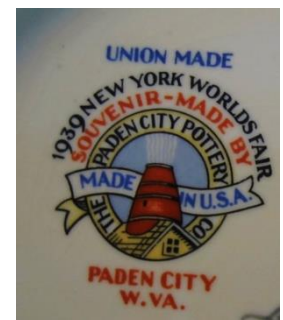
The above photos are of the two Homer Laughlin "Potter's Plates" --- and a picture of the backstamp. The blue plate was called "The Artist Decorating the Vase". The ivory is called "The Potter at his Wheel". They are found in turquoise, light green, and ivory (and more rarely in other colors.) They are also found in a tan or mocha shade. Sometimes they are found in the original box. I once saw one, in the original box, which had facsimile signatures of the Fair dignitaries as part of the backstamp.



The above photos are three of the beautiful "Four Seasons" small plates. (I had all four at one time, but a cat broke one of them!!! I am missing the autumn plate) My winter plate (shown in closeup) is an anomaly as it was dipped in green – not exactly a winter color. It was supposed to be in ivory. These are beautiful items and really compliment Fiesta dinner ware. The detail work is quite nice.



The last pottery piece is probably my favorite due to the superb graphics. It is a large serving bowl made by the Paden City Pottery Company. (West Virginia) The markings on the bowl are amazing so I have included a photo.



Nylon was introduced at the 1939 World's Fair --- and here is a colorfully decorated handkerchief.

July 2020 Show and Tell (COVID19 finds)



From left: **Alice Lowe** – cobalt blue mini basket; **Astrid Mussi** with Christian Bordelon– Duncan & Miller lavender Hobnail vase as well as other Fenton Hobnail vases; **Bonnie Theard** – Hall creamer in satinized light blue with pick flowers plus an English Royal Winton cup and saucer.



From left: **Christian Bordelon** – Cobalt blue console bowl; **Kelly Stockman** – Heisey Orchid etch Cake Plate plus Fenton Aqua Crest vase, green tidbit from Japan, Giraffe stem glasses from son of Tiffany; **Lee Vinson** – Thrift Store find for \$1 - 1952 Tiffin #17507 stem wine glasses plus EAPG bowl, and 4 part Fostoria American relish dish.



Gloria and Ronnie Broadbent – Pink vase with Japanese Tulip they thought was Cambridge Tulip but Greg Jones says it is Paden City (debate is still going on) plus a Lancaster bowl with Thistle etch; **Carol LeBell** – clear Royal Lace butter dish from the "show that did not happen" plus, from Elizabeth Furlong, 3 beautiful butter dishes - right: McKee Aztec butter dish, center: Violetta led crystal butter dish, and left: McKee Quitec butter dish from 1910. She also picked up from that show a pink Cambridge #3400/52 "key hole" butter dish, Cambridge clear Chantilly Etched tab handled art deco butter dish, and a beautiful art deco glass cabinet to store her collection of butter dishes.

Not pictured from meeting was **Jane Stacy's** red bowl that Keely Stockman found for her.