

**Turbo air**  
AIR CONDITIONER MANUFACTURER

4184 E. Conant St.  
Long Beach, CA 90808  
Tel. 888-900-1002  
Fax. 310-900-1088  
[www.turboairinc.net](http://www.turboairinc.net)

Project :

Model # :

Item # :

Qty :

Approval :

## Unit Cooler

**Model : ADR196AE**



### ≡ FEATURES / BENEFITS ≡

- Blue anti-corrosion-fin increases the life span of the coil.
- Air-pass guard is located at the bottom of the coil to improve heat exchange rate.
- Easy to replace defrost heater. (LED model)
- Corrugated fin is used to increase heat exchanges rate by expanding the surface area.
- Even in confined space, all parts can be reached easily by opening the front cover.
- Location of power connector makes replacement of motor convenient.
- Seamless inner groove copper tube increases the heat exchange rate by reducing the space between the fin and copper tube.
- Venturi type distributor and precise orifice hole are used to minimize the pressure drop and maximize the freezing capacity respectively.
- Even in confined space, all parts can be reached easily by opening the front cover.
- Thermostat is installed to prevent over temperature on heater.
- Circuit opens automatically over 50°F.
- Parts available :
  - Expansion Valve (Sporlan) (Pre Mounted)
  - Solenoid Valve (Sporlan)
  - Thermostat (Johnson Control)
- The spiral fan guard enables cold air to be delivered efficiently and thoroughly.
- The protruding fan and motor placement substantially reduce vibration and noise.
- PSC fan motor, which prevents oil evaporation, is used for long life expectancy.
- EC Motor (optional) for high energy efficiency.
- Unique air flow system (patent pending) results in improved circulation within crowded walk-in cooler/freezer.
- Anti-oxidizing stainless steel mounting and bolts.

# Unit Cooler

## Model : ADR196AE

### ADR AIR DEFROST MODELS 60HZ. WITH EC MOTORS.

ADR Model	Capacity BTUH 10°F TD 25°F SST	Fan Data		EC Motor Data 120V 1Ph 60Hz		
		CFM/m³H	No.	HP	Total Amps	Watts
ADR196AE	19600	1950	3	1/15	3.00	150

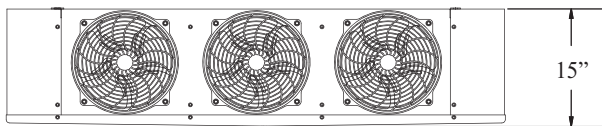
ADR Model	Connections (Inches)				Approx. Net Wt. Lbs
	Coil Inlet	Suction	External Equalizer	Drain	
ADR196AE	1/2 OD	7/8 ID	1/4 OD	3/4 MPT	69

Design and specifications subject to change without notice

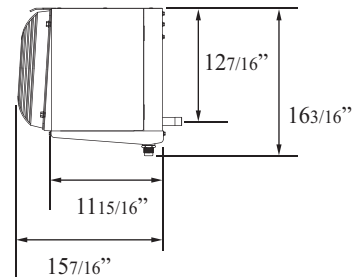
■ **WARRANTY : 1 Year Fan Motor and Parts Warranty**

## PLAN VIEW

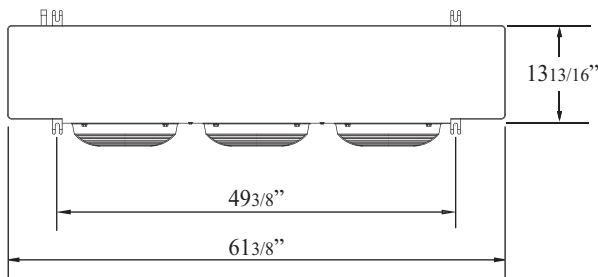
(unit : inch)



**FRONT VIEW**



**SIDE VIEW**



**TOP VIEW**



■ Toll Free : XXXXXXXXXX